

1 Download the app



2 Unbox and Prepare Components

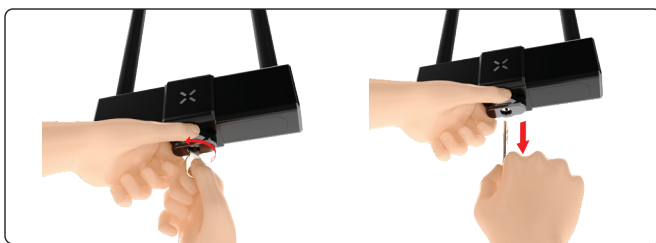
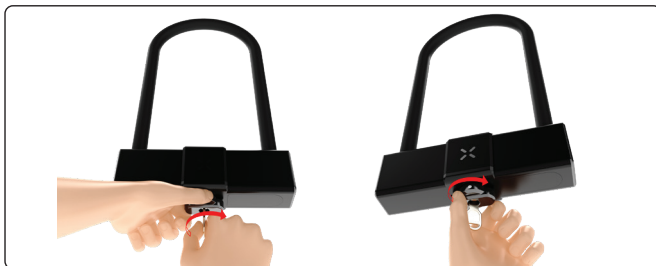
Included in the Box

- Titan Smart U-Lock
- CR2 Battery
- Pairing Tool
- 2 Mechanical Keys



3 Prepare for Activation

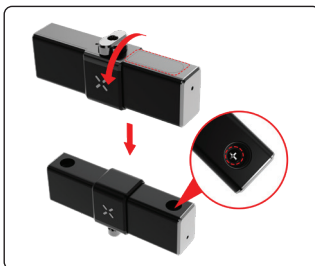
1. **Unlock the U-shackle:** Insert the mechanical key into the cylinder and hold the knob firmly while turning the key clockwise. Turn the knob clockwise to open the lock. Then, turn the key counterclockwise and remove it.



2. **Remove the U-shackle:** Pull the U-shackle straight out of the lock body.

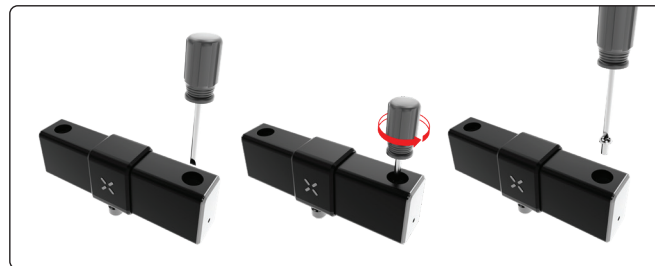


3. Locate the designated screw hole on the smart device to prepare for the next step.

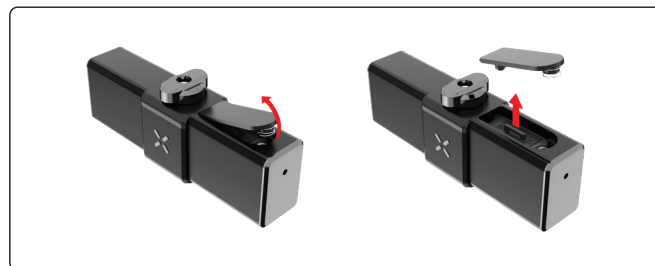


4 Activating the Smart Device

1. **Loosen the lever screw:** Insert a Phillips screwdriver into the screw head and turn counterclockwise until the lever assembly can be lifted off.



2. **Remove the lever faceplate:** Gently pull the lever assembly straight up to detach it from the housing.



3. **Lift out the battery compartment:** Carefully lift the small battery compartment from its recess beneath the lever.

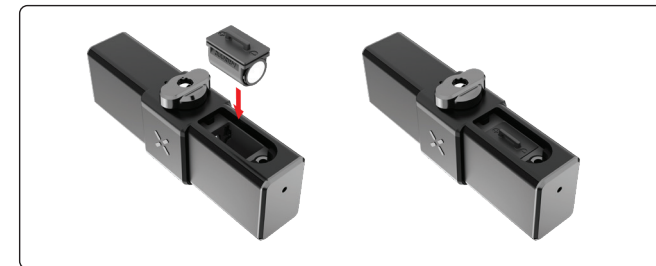


4 Activating the Smart Device (continue)

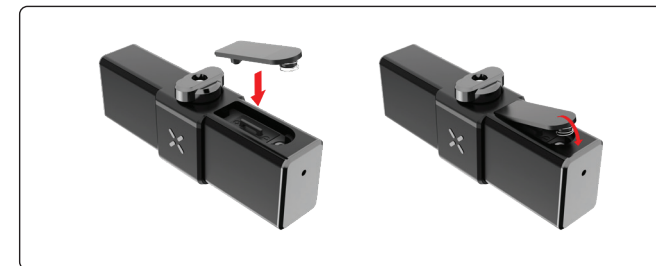
4. **Insert the CR2 battery:** Align the "+" end of the battery with the "+" marking in the compartment, then insert it fully into place.



5. **Reinstall the battery compartment:** Position the battery compartment back into its original recess, ensuring it sits flush.

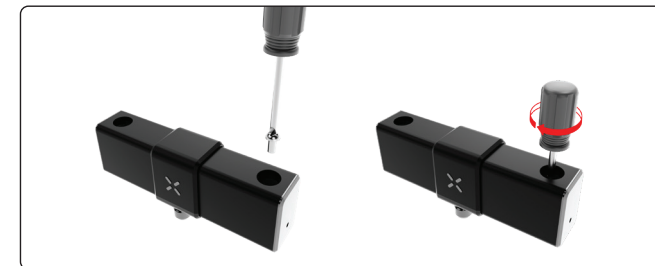


6. **Reattach the lever faceplate:** Lower the lever assembly straight down onto the housing until it clicks into place.

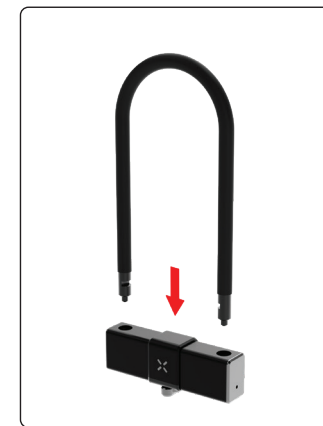


4 Activating the Smart Device (continue)

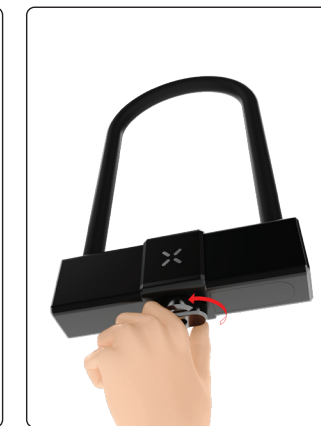
7. **Tighten the lever screw:** Use a Phillips screwdriver to turn the screw clockwise until snug.



8. **Reinsert the U-shackle:** Align each end of the shackle with its corresponding hole in the lock housing and push it fully into place.



9. **Lock the U-shackle:** Once the U-shackle is in place, turn the knob counterclockwise to lock it securely.



Note:
Always ensure the U-shackle clicks firmly into the locked position.

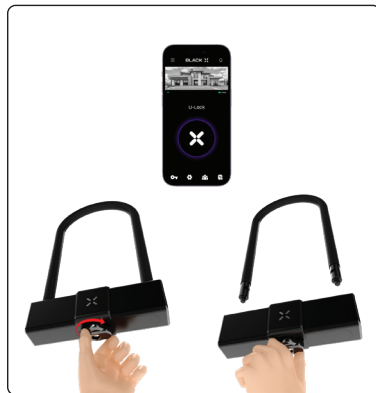
5 Pairing the Lock with BLACK X App

1. Ensure Bluetooth is enabled on your smartphone.
2. Download BLACK X App and register an account.
3. From the main menu, tap on "Install New Lock".
4. Name your lock or select "Bike Lock" from the pre-named list below, and assign it to a home.
5. While in "Discovering Nearby Locks" mode in the BLACK X App, insert the pairing tool into the pairing button recess located on the underside of the smart lock and press firmly to initiate pairing.
6. When the correct lock appears in the pop-up, tap "Connect" to proceed.
7. Congratulations! Your BLACK X Smart Lock is now connected.



6 Test Functionality

1. Open the BLACK X app and tap the Unlock button.
2. Within 6 seconds, turn the knob clockwise to unlock the lock.
3. Confirm that the lock opens smoothly.
4. **Lock the Lock:** Ensure the U-shackle is fully and correctly inserted into the lock body. Then, turn the knob counterclockwise to lock the mechanism securely.



7 Online Instructions

Need help with installation
or have questions?



www.black.inc

Optional - Pairing xKey for Additional Unlocking Method

1. From the main menu, select your lock and tap the settings icon ⚙️.
2. Select "xKey remote" and then tap "Add xKey".
3. Choose the relevant period for authorized access: Timed, Unlimited, or Recurring.
4. Enter the authorized user's details (first name, last name, and the relevant period, if applicable), then select Continue.
5. Activate the BLACK X xKey by pressing and holding the unlock button for 5 seconds.
6. Select the relevant xKey from the list.
7. Congratulations! You have successfully paired your BLACK X xKey.



Using the xKey:

To unlock the lock with the xKey, simply press the button on the xKey within a 2-meter (6 ft) range. The lock will engage the unlock function, just turn the knob clockwise and remove the U-shackle.

Note: The xKey is only used for unlocking. Ensure the U-shackle is fully and correctly inserted into the lock body. Then, turn the knob counterclockwise to lock the mechanism securely.

FCC Statement

This device complies with part 15 of the FCC Rules. Operation is subject to the following two conditions: (1) This device may not cause harmful interference, and (2) this device must accept any interference received, including interference that may cause undesired operation.

Note: This equipment has been tested and found to comply with the limits for a Class B digital device, pursuant to part 15 of the FCC Rules. These limits are designed to provide reasonable protection against harmful interference in a residential installation. This equipment generates, uses and can radiate radio frequency energy and, if not installed and used in accordance with the instructions, may cause harmful interference to radio communications.

However, there is no guarantee that interference will not occur in a particular installation. If this equipment does cause harmful interference to radio or television reception, which can be determined by turning the equipment off and on, the user is encouraged to try to correct the interference by one or more of the following measures:

- Reorient or relocate the receiving antenna.
- Increase the separation between the equipment and receiver.
- Connect the equipment into an outlet on a circuit different from that to which the receiver is connected.
- Consult the dealer or an experienced radio/TV technician for help.

Note: The Grantee is not responsible for any changes or modifications not expressly approved by the party responsible for compliance. Such modifications could void the user's authority to operate the equipment. The device has been evaluated to meet general RF exposure requirements.

This equipment complies with FCC's RF radiation exposure limits set forth for an uncontrolled environment. This device and its antenna(s) must not be co-located or conjunction with any other antenna or transmitter.

