

## Assembly and Installation of the xPad

### Tools Required

- Phillips head screwdriver
- Keypad ejector tool (included)

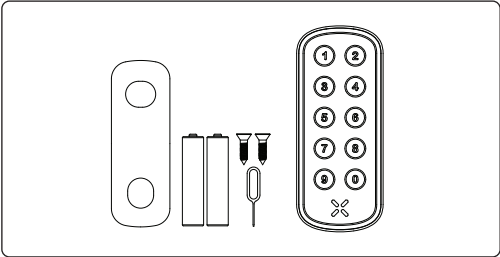
**Note:** Keep the keypad ejector tool for future battery replacements.

## 1 Unbox and Prepare Components

Open the package and identify all components. Lay them out for easy access.

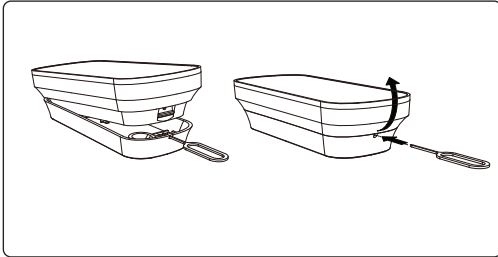
The package includes:

- |                         |                   |
|-------------------------|-------------------|
| 1 x xPad                | 2 x Screws        |
| 1 x 3M adhesive pad     | 2 x AAA Batteries |
| 1 x Keypad ejector tool |                   |



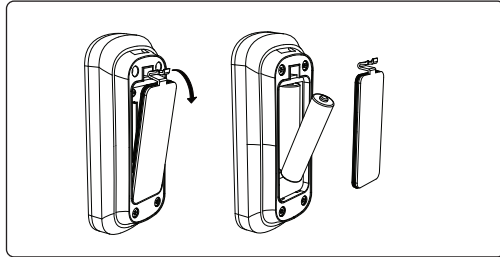
## 2 Remove the Back Cover of the xPad

Using the Keypad ejector tool, remove the back cover of the xPad by inserting the pin into the designated hole at the bottom of the device.



## 3 Place the batteries

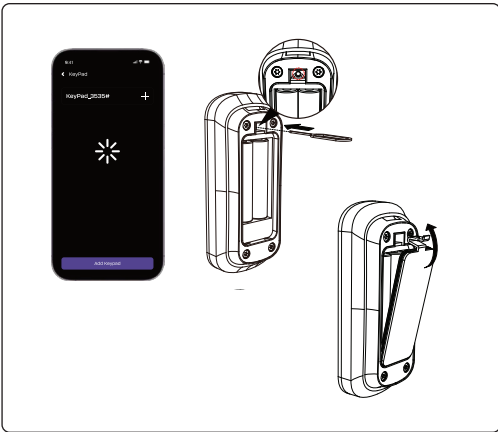
1. Open the battery compartment cover.
2. Insert the batteries, ensuring they are correctly positioned. The xPad will power on and emit a beep to confirm proper installation.



## 4 Pair the xPad with the BLACK X app

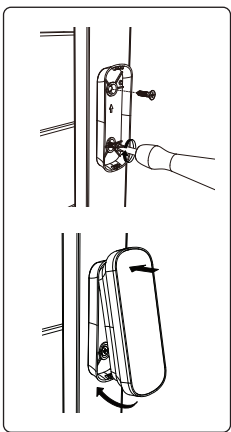
1. Open the BLACK X App, navigate to the lock you wish to pair with the xPad, and tap the Settings button.
2. In the Settings menu, select Keypad, then tap Add Keypad.
3. On the xPad, locate the Pairing Key in the small hole just above the battery compartment, where the batteries are installed. Use the Keypad ejector tool to press the Pairing Key button. The xPad will begin flashing to indicate pairing mode.
5. In the app, tap Continue to proceed.
6. Select your xPad from the list of available devices to complete the pairing process.
7. Close the battery compartment cover securely.

## 4 Pair the xPad with the BLACK X app (continue)



## 5 Secure the xPad to the Surface - Option 1

1. Choose a suitable location for installing the xPad, ensuring it is within 10 feet (3 meters) of the lock. Prepare two screws and a Phillips head screwdriver.
2. Position the back cover of the xPad on the surface and secure it by inserting the screws into the two designated holes.
3. Slide the xPad into the back cover and ensure it is securely in place.

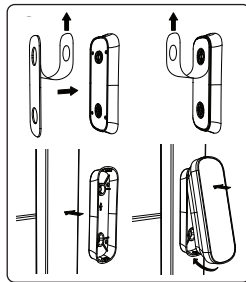


## 5 Secure the xPad to the Surface - Option 2

1. Choose a suitable location for installing the xPad, ensuring it is within 10 feet (3 meters) of the lock for standard doors.

**Note:** For steel doors, it is recommended to attach the xPad as close to the door and lock as possible to ensure optimal Bluetooth connectivity.

2. Peel off the backing from one side of the 3M adhesive pad.
3. Carefully place the adhesive pad on the back cover of the xPad, ensuring proper alignment.
4. Peel off the backing from the other side of the adhesive pad.
5. Stick the back cover of the xPad to the chosen position on the surface.
6. Slide the xPad into the back cover and ensure it is securely in place.



## 6 Online Instructions

Need help with installation or have questions?



[www.black.inc](http://www.black.inc)

## 7 FCC Statement

This device complies with part 15 of the FCC Rules. Operation is subject to the following two conditions: (1) This device may not cause harmful interference, and (2) this device must accept any interference received, including interference that may cause undesired operation.

Note: This equipment has been tested and found to comply with the limits for a Class B digital device, pursuant to part 15 of the FCC Rules. These limits are designed to provide reasonable protection against harmful interference in a residential installation. This equipment generates, uses and can radiate radio frequency energy and, if not installed and used in accordance with the instructions, may cause harmful interference to radio communications. However, there is no guarantee that interference will not occur in a particular installation. If this equipment does cause harmful interference to radio or television reception, which can be determined by turning the equipment off and on, the user is encouraged to try to correct the interference by one or more of the following measures:

- Reorient or relocate the receiving antenna.
- Increase the separation between the equipment and receiver.
- Connect the equipment into an outlet on a circuit different from that to which the receiver is connected.

-Consult the dealer or an experienced radio/TV technician for help.  
Note: The Grantee is not responsible for any changes or modifications not expressly approved by the party responsible for compliance. Such modifications could void the user's authority to operate the equipment.

The device has been evaluated to meet general RF exposure requirement. To maintain compliance with FCC's RF exposure guidelines, the distance must be at least 20 cm between the radiator and your body, and fully supported by the operating and installation configurations of the transmitter and its antenna(s).



**BLACK**