

BLACK X xKey Setup Guide

Introduction

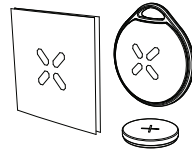
Thank you for choosing the BLACK X xKey. This remote fob offers a secure and convenient way to unlock your doors with a simple push-button. Follow the instructions below to set up and use your xKey.

Specifications

- Model: xKey 1000
- Battery Type: CR2032 (replaceable)
- Wireless Protocol: Bluetooth LE
- Range: Up to 10 meters (33 feet)

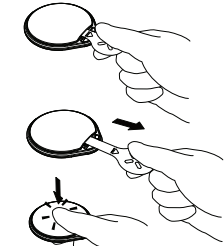
1 Unbox and Prepare Components

Included in the Box
1 x BLACK X xKey
1 x CR2032 Battery (pre-installed)
Quick Start Guide



2 Activate the xKey

1. Pull the plastic tab located between the battery and the contact points.
2. Ensure the outer cover is securely attached to the base by pressing it firmly into position.



3 Pair the BLACK X xKey and Assign Permissions

1. Ensure Bluetooth is activated on your smartphone and open the BLACK X app.
2. Navigate to your BLACK X lock settings ⚙️, select **xKey** and then tap **Add xKey**.
3. Choose the relevant period for authorized access: Timed, Unlimited, or Recurring.
4. Enter the authorized user's details (first name, last name, and the relevant period, if applicable), then select Continue.
5. Activate the BLACK X Key by pressing and holding the unlock button for 5 seconds.
6. Select the relevant xKey from the list.
7. Congratulations! You have successfully paired your BLACK X xKey.

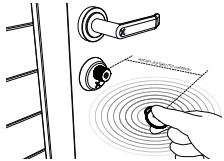


4 Test your BLACK X xKey

Press the unlock button on the xKey to unlock your BLACK X lock. You will hear a beep sound from the lock, confirming successful operation.

Troubleshooting

If the lock does not respond, ensure you are within 33 feet (10 meters) of the lock.



5 Online Instructions

Need help with installation or have questions?

www.black.inc



Maintenance

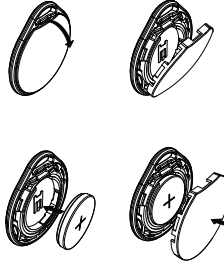
Battery Status Check:

1. Open the BLACK X app and navigate the settings for your BLACK X lock.
2. Select xKey and then choose the relevant xKey from the list.
3. An information screen will appear.
4. Locate the Battery field to view the current battery level.



Battery Replacement

Your BLACK X xKey uses a CR2032 coin cell battery. To replace the battery, follow the next steps:

1. Open the outer cover downward, as shown in the diagram, to detach it from the base.
- Note:** A tool may be required to apply additional pressure for opening.
2. Insert a CR2032 battery with the positive (+) side facing up.
3. Secure the outer cover onto the base by pressing it firmly into position until it clicks securely.





Safety and Handling



Danger – Battery Hazard

- This product contains a CR2032 button/coin cell battery. If swallowed, it can cause internal burns, serious injury, or death.
- Symptoms of ingestion may include coughing, wheezing, difficulty breathing, loss of appetite, or vomiting. If battery ingestion is suspected, seek immediate medical help—medical intervention is required within 2 hours.

- KEEP AWAY FROM CHILDREN.
- If the battery compartment is damaged or cannot be properly secured, discontinue use immediately.
- Do not mix old and new batteries or different types of batteries.
- Dispose of used batteries in accordance with local regulations.
- Replacing the battery with an incorrect type may cause fire or electric shock.



Choking Hazard

xKey, its battery, battery compartment door, and case pose a choking hazard and could cause injury. Keep out of reach of small children.

First Aid Instructions

- If battery ingestion is suspected, DO NOT induce vomiting.
- Bring the suspected battery type and seek immediate medical assistance at the nearest emergency facility.
- For emergency support, contact poison control or seek urgent medical help.

Electromagnetic Interference and Medical Devices

xKey contains electronic components and a Bluetooth radio that emit electromagnetic fields. These fields, along with any built-in magnets, may interfere with pacemakers, defibrillators, or other medical devices.

To ensure safety:

- Keep xKey at a safe distance from medical devices.
- Consult your physician and the manufacturer of your medical device for specific guidance.
- Discontinue use of xKey immediately if you suspect it is interfering with a pacemaker, defibrillator, or any other medical device.
- For further guidance, refer to the medical device manufacturer's recommendations regarding RF interference.

Electrostatic Discharge (ESD)

In environments with very dry air, static electricity may accumulate when handling xKey. While rare, electrostatic discharge (ESD) may temporarily impact xKey's functionality.

To minimize the risk of electrostatic discharge:

- Avoid using xKey in extremely dry conditions.
- Before handling xKey, touch a grounded, unpainted metal surface to discharge any static electricity.

Wireless Compliance and Bluetooth Safety

xKey uses Bluetooth technology for wireless communication. To ensure safe and optimal use, follow these guidelines:

- Radio Frequency Exposure:
xKey operates using low-power Bluetooth signals. While exposure is minimal, it is recommended to keep the device at a safe distance from the body when not in use.
- Interference with Other Devices:
xKey may cause interference with other wireless devices operating in the 2.4 GHz frequency band. If you experience connectivity issues, try:
 - Moving away from other electronic devices.
 - Restarting your Bluetooth connection.
 - Ensuring xKey is within the recommended range of the paired device.
- Compliance with Local Regulations:
Bluetooth usage is subject to local wireless communication regulations. Ensure that xKey is used in accordance with applicable laws and restrictions in your country.
- Air Travel and Restricted Areas:
Some locations, such as airplanes, hospitals, or sensitive facilities, may restrict Bluetooth usage. Follow local guidelines and disable Bluetooth if required.

FCC Statement

This device complies with part 15 of the FCC Rules. Operation is subject to the following two conditions: (1) This device may not cause harmful interference, and (2) this device must accept any interference received, including interference that may cause undesired operation.

Note: This equipment has been tested and found to comply with the limits for a Class B digital device, pursuant to part 15 of the FCC Rules. These limits are designed to provide reasonable protection against harmful interference in a residential installation. This equipment generates, uses and can radiate radio frequency energy and, if not installed and used in accordance with the instructions, may cause harmful interference to radio communications. However, there is no guarantee that interference will not occur in a particular installation. If this equipment does cause harmful interference to radio or television reception, which can be determined by turning the equipment off and on, the user is encouraged to try to correct the interference by one or more of the following measures:

- Reorient or relocate the receiving antenna.
- Increase the separation between the equipment and receiver.
- Connect the equipment into an outlet on a circuit different from that to which the receiver is connected.
- Consult the dealer or an experienced radio/TV technician for help.

Note: The Grantee is not responsible for any changes or modifications not expressly approved by the party responsible for compliance. Such modifications could void the user's authority to operate the equipment. The device has been evaluated to meet general RF exposure requirement. This equipment complies with FCC's RF radiation exposure limits set forth for an uncontrolled environment. This device and its antenna(s) must not be co-located or conjunction with any other antenna or transmitter.

