

SAFETY NOTE

- 1, This appliance can be used by children aged from 8 years and above and persons with reduced physical, sensory or mental capabilities or lack of experience and knowledge if they have been given supervision or instruction concerning use of the appliance in a safe way and understand the hazards involved.
- 2, Children shall not play with the appliance.
- 3, Cleaning and user maintenance shall not be made by children without supervision.
- 4, If the supply cord is damaged, it must be replaced by the manufacturer, its service agent or similarly qualified persons in order to avoid a hazard.
- 5, WARNING: the drive shall be disconnected from its power source during cleaning, maintenance and when replacing parts.
- 6, The instructions shall state that the A-weighted emission sound pressure level of the drive is equal to or less than 70 dB(A), e.g. by writing LpA ≤ 70 dB(A).
- 7, The mass and the dimension of the driven part shall be compatible with the rated torque and rated operating time.
- 8, The type of driven part the drive is intended for.
- 9, WARNING: Important safety instructions. It is important for the safety of persons to follow these instructions. Save these instructions.
- 10, Do not allow children to play with fixed controls. Keep remote controls away from children
- 11, Frequently examine the installation for imbalance and signs of wear or damage to cables and springs. Do not use if repair or adjustment is necessary
- 12, Watch the moving shutter and keep people away until he shutter is completely closed
- 13, WARNING: Important safety instructions. Follow all instructions, since incorrect installation can lead to severe injury.
- 14, Before installing the drive, remove any unnecessary cords and disable any equipment not needed for powered operation

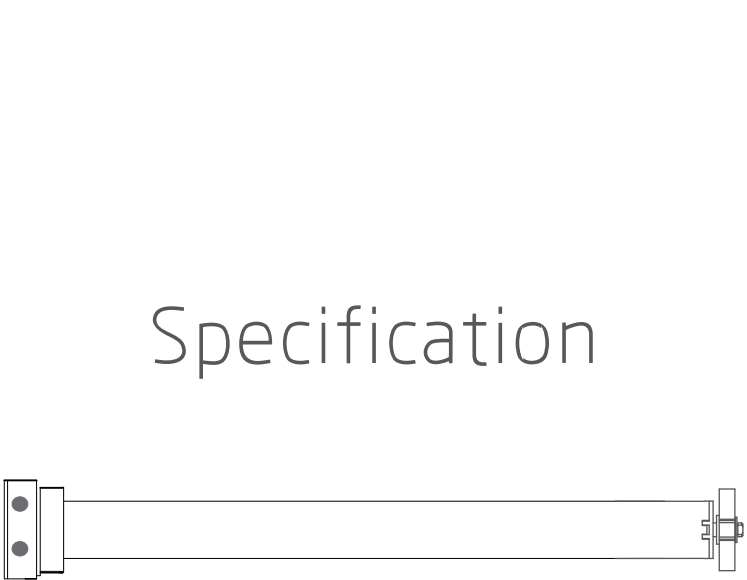


RF exposure statement
This equipment complies with the FCC radiation exposure limits set forth for an uncontrolled environment. This transmitter must not be co-located or operating in conjunction with any other antenna or transmitter.

FCC Warning
This device complies with Part 15 of the FCC Rules. Operation is subject to the following two conditions:
(1) This device may not cause harmful interference, and (2) this device must accept any interference received, including interference that may cause undesired operation.

Note: This equipment has been tested and found to comply with the limits for a Class B digital device, pursuant to part 15 of the FCC Rules. These limits are designed to provide reasonable protection against harmful interference in a residential installation. This equipment generates, uses and can radiate radio frequency energy and, if not installed and used in accordance with the instructions, may cause harmful interference to radio communications. However, there is no guarantee that interference will not occur in a particular installation. If this equipment does cause harmful interference to radio or television reception, which can be determined by turning the equipment off and on, the user is encouraged to try to correct the interference by one or more of the following measures:
—Reorient or relocate the receiving antenna.
—Increase the separation between the equipment and receiver.
—Connect the equipment into an outlet on a circuit different from that to which the receiver is connected.
—Consult the dealer or an experienced radio/TV technician for help.

NOTE 2: Any changes or modifications to this unit not expressly approved by the party responsible for compliance could void the user's authority to operate the equipment.



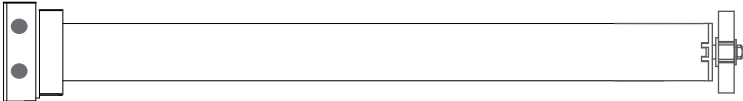
(A-01)

Specification

Product introduction



One motor maximum can store 10 channels, over 10 channels, if still need add new channels, it will be repeating covered last channel



Functional features:

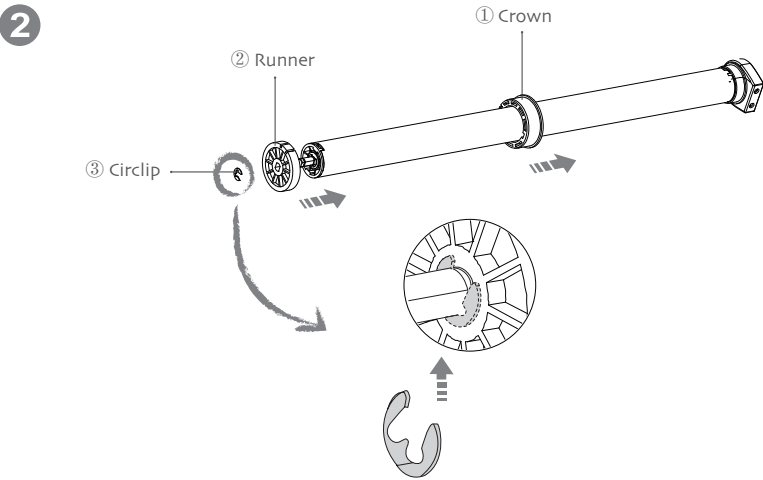
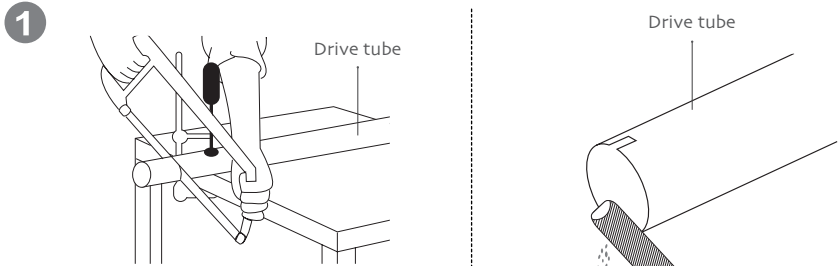
- Electronic Limit
 - Stall Protection
 - Jog & Tilt
 - Program Button
 - Speed Regulation
 - DC Power
- Switch Direction
 - Built-in Receiver
 - Preferred Stop Position
 - Reset to Factor Mode
 - Memorized Settin

Parameter (More models and parameters are subject to the nameplate)

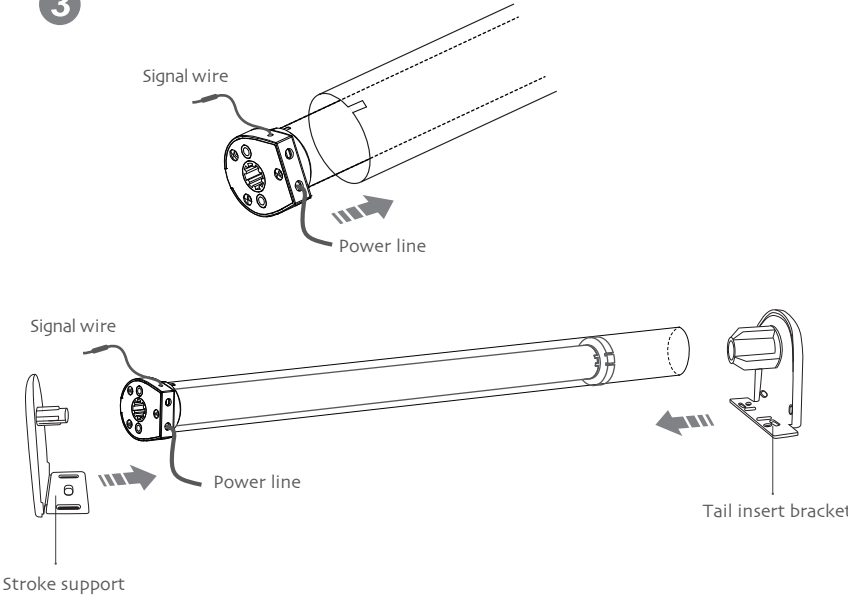
Type	DM25CE/S
Rated Voltage	12V
Emission Frequency	433.92MHz
Working Temperature	-10℃ ~ +55℃

Motor installation

- ①Driving tube must be close-fitting with crown and drive adapter.
- ②Choose crown and drive adapter based on the driving tube.



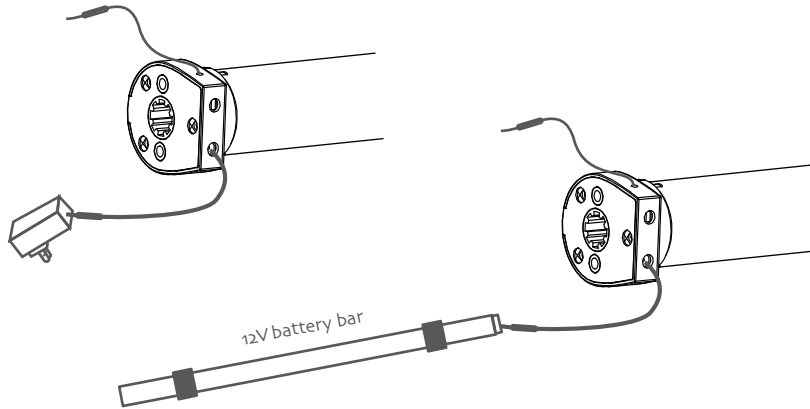
3



Charging instructions



The motor can be charged directly with the adapter or 12V battery bar power supply; After the battery is dead,can use a solar panel or adapter to charge.



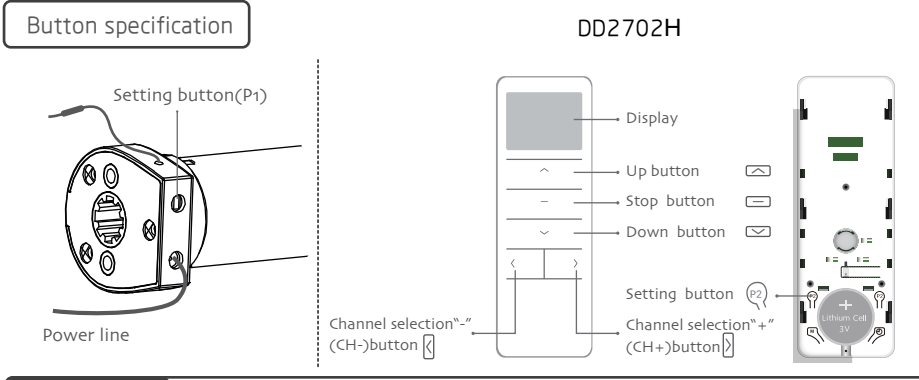
Operation note



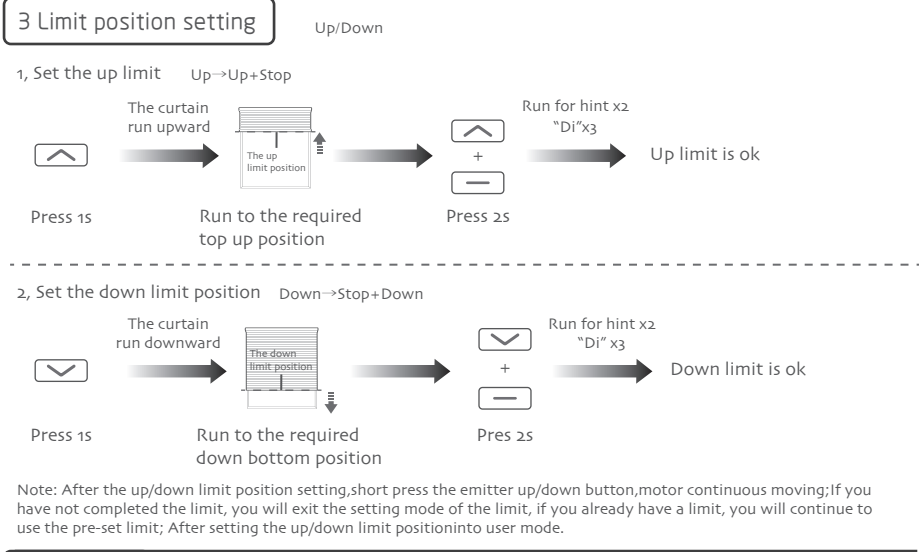
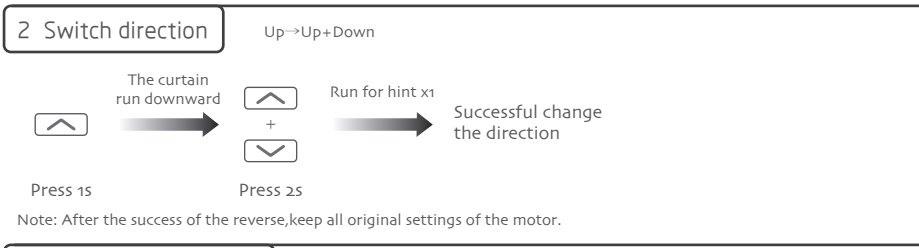
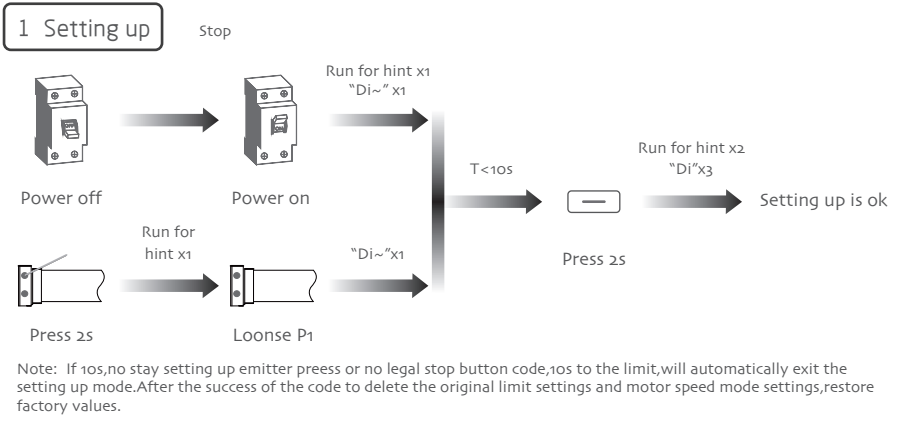
Please read the following precautions before use:

1. Don't operate motors when low wltage alarm:
①Motor stop running when the supply voltage is lower than 8.0V,and it will restart again when the voltage is greater than 8.5V
②If the voltage is less than 10V, the motor will alarm for 10 times to prompt it needs to be charged every time when the motor is working.
③Motor stop beep for hint when the supply voltage is lower than 7.0V,and it will restart again when the voltage is greater than 7.5V
2. Oprating :
①The valid interval of the emitter button is 10s,the emitter will quit the set after 10s.
②The motor will run or beep for hint,please do the next step after the hint.
3. Set limit position :
①After the up/down limit position setting,and the up/down limit position and preferred stop position can't at the same position.
②After limit setting,with power off and memory function.
③Into the match-code status 2 minutes later,it will quit out the setting limits status automatically.
④It will delete every memory and restore the factory settings.
4. When the motor running without any operation, the maximum running time is 6 minutes,it will stop automatically.
5. If the emitter lost,please setting up again with the new emitter.

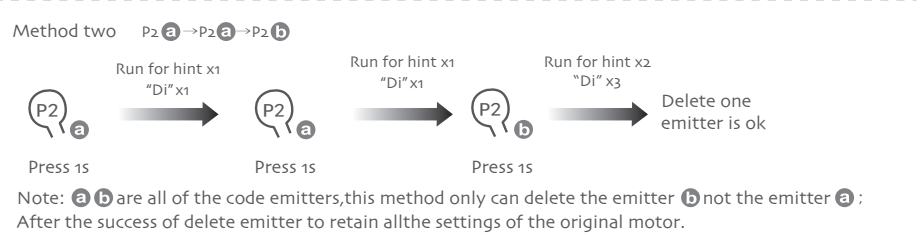
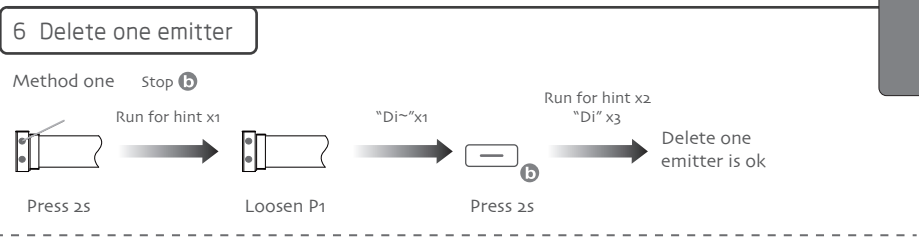
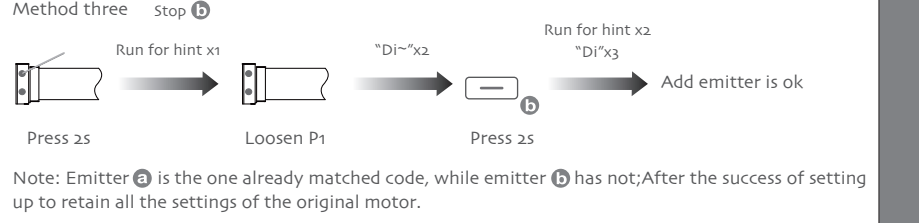
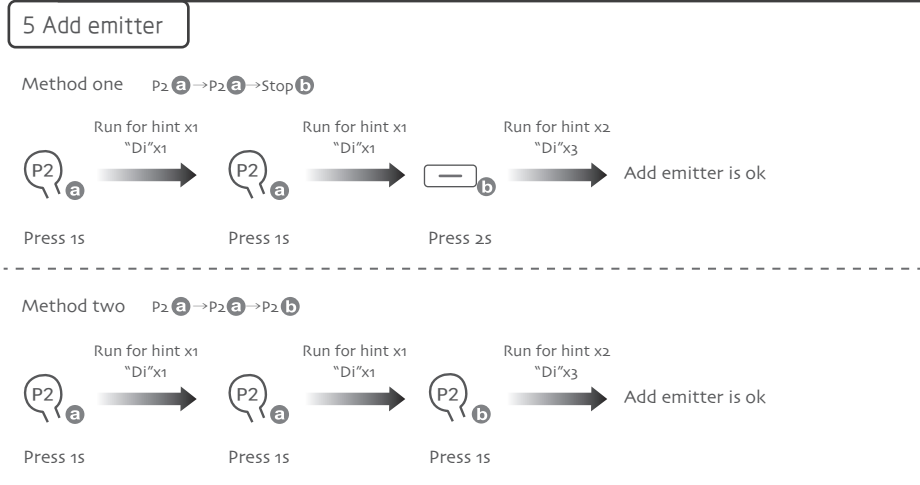
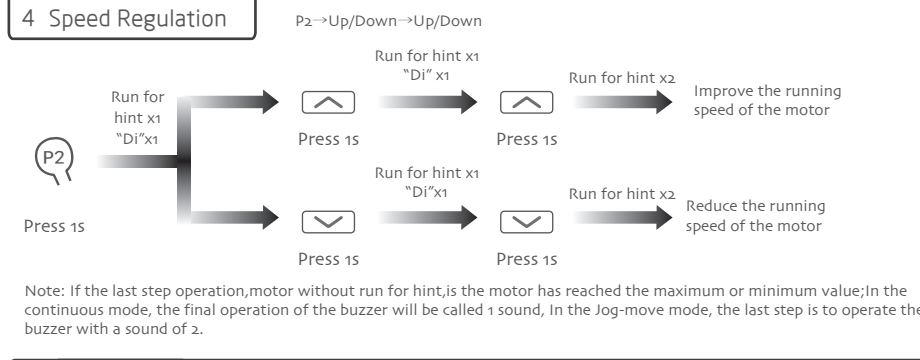
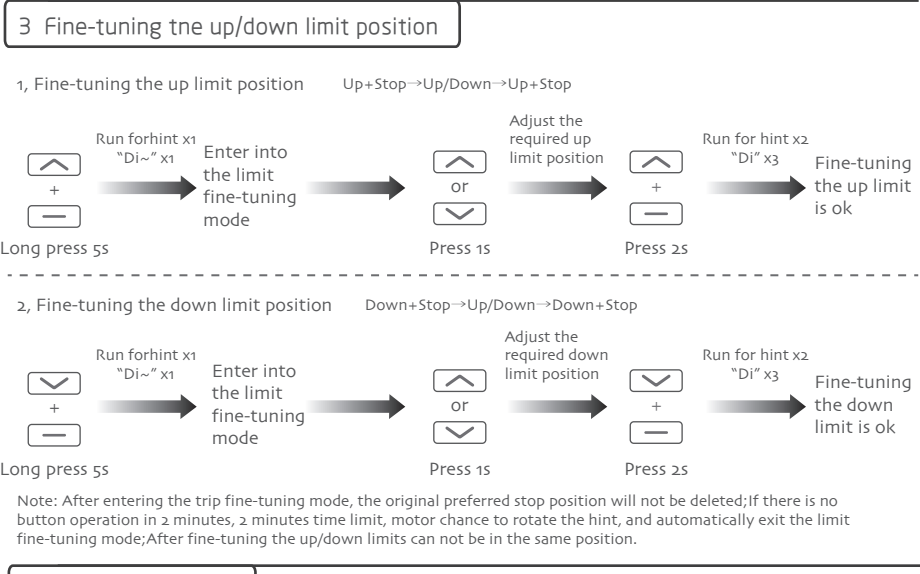
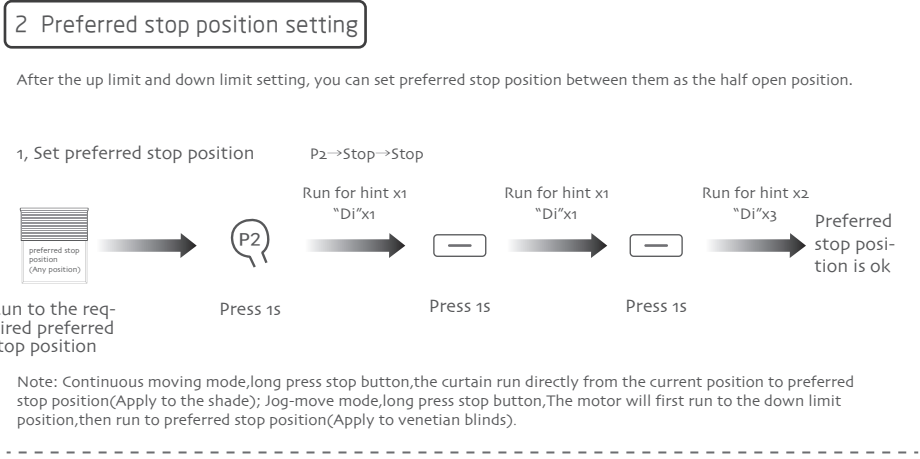
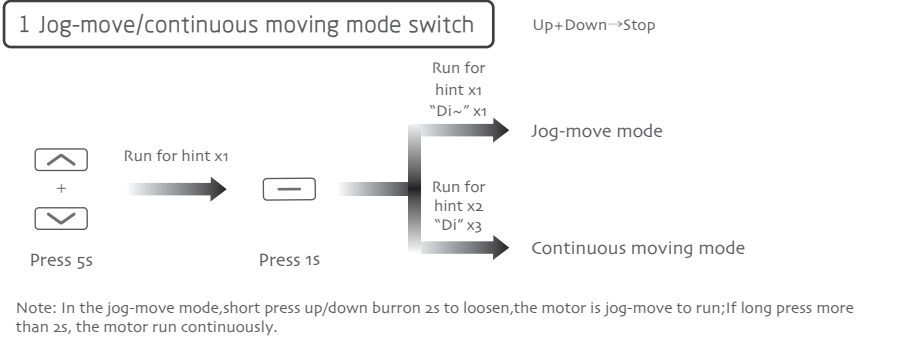




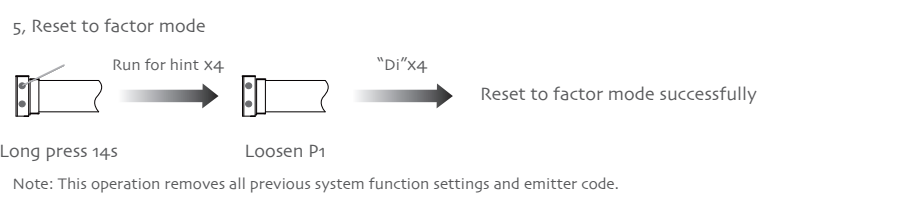
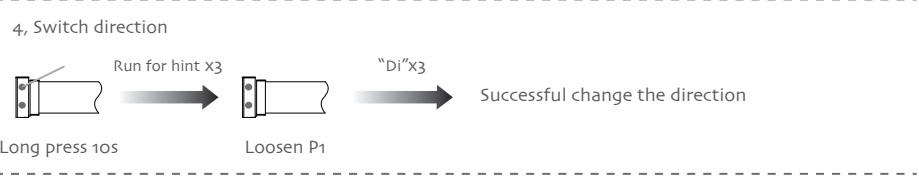
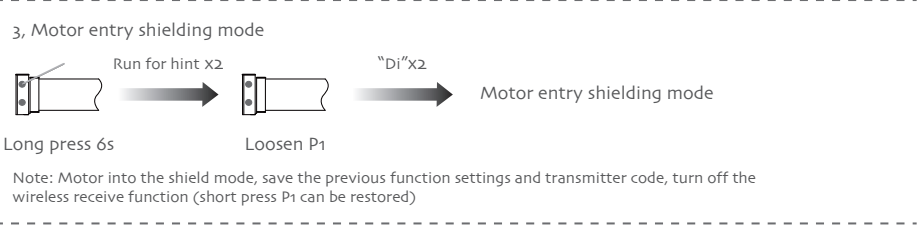
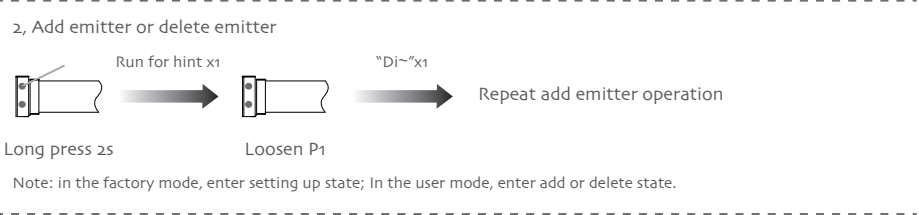
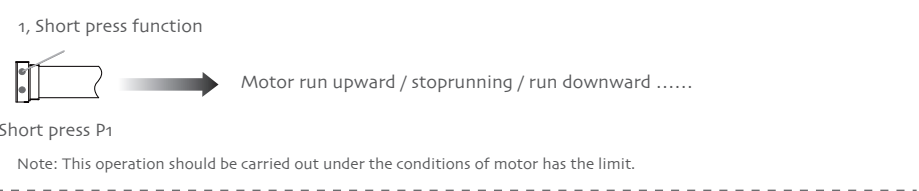
Factory mode



USER MODE



P1 BUTTON OPERATION



FAULT AND SOLUTION

NUMBER	PHENOMENON	REASON	PROCESSING METHOD
1	The motor is not running	a, The battery is not activated. b, The emitter is not matched. c, If press P1 button for a long time while with no reaction, may be the power is short-circuit or the circuit board or the motor is broken.	a, Activate the motor after fully charged b, Setting up the match code c, Contact the engineers for after-sales

DC Tubular Motor

DM25CE/S-1.1/28
DM25CE/S-1.1/16

Specification



(A-01)