

XDosing® G1 智能咖啡拼豆机 ● ● ●

用户指南

User Duide of XDosing® Smart Coffee Bean Blending Dispenser

目录 ● ● ● ●

Table of contents

重要安全提示	基本	使用	其他
1.警告 Warning	1.包装清单 Package Contents	1.出豆 Eject Beans	1.故障排除 Troubleshooting
2.小心 Caution	2.参数 Specifications	2.清空豆仓 Empty Bean Hopper	2.免责声明 Disclaimer
3.注意 Attention		3.标定重量 Calibrate Weight	3.产品中有害物质的名称和含量 Names and Contents of Hazardous Substances in the Product
		4.清洁与维护 Cleaning and Maintenance	4.更多信息 More Information

重要安全提示 ●●●

Important safety notice

- 1.警告 Warning
- 2.小心 Caution
- 3.注意 Attention

重要安全提示 ● ○ ○

Important safety notice

1.警告 Warning

1. 使用本产品前，请仔细阅读本手册，并妥善保存。
2. 本产品不防水，清理时请先断电，可以不滴水的湿抹布擦拭设备外壳，防止产品进水洗。
3. 请勿将产品放在高温或高湿度的地方。
4. 请勿在充电接口有液体时充电。
5. 请勿用湿手触摸本产品或将其浸入水中或暴露在雨中。
6. 请勿将产品靠近液体、其他易燃或挥发性溶剂，以免损坏产品。
7. 请妥善保管本产品，避免儿童接触。
8. 请勿在潮湿环境中使用本产品，否则会导致短路或触电。
9. 请勿拆卸或改装本产品。如果产品因跌落或因使用不当造成的产品故障不在保修范围内，请联系制造商进行有偿维修。

1. Please read this manual carefully before using the product and keep it properly.
2. This product is not waterproof. When cleaning, please disconnect the power first. You can wipe the device casing with a damp cloth that does not drip water to prevent water from entering the product.
3. Do not place the product in high temperature or high humidity environments.
4. Do not charge when there is liquid at the charging port.
5. Do not touch this product with wet hands, immerse it in water, or expose it to rain.
6. Keep the product away from liquids, other flammable substances, or volatile solvents to avoid damage.
7. Store this product properly and keep it out of reach of children.
8. Do not use this product in humid environments as it may cause short circuits or electric shocks.
9. Do not disassemble or modify this product. If the product malfunctions due to dropping or improper use and is outside of warranty coverage, please contact the manufacturer for paid repairs.

重要安全提示 ○●○

Important safety notice

2.小心 Caution

1. 请勿敲打或跌落本产品，如产品受损，请不要继续使用。
2. 工作环境温度应在-10~45℃之间，工作环境湿度应≤95%。
3. 产品不防水，产品尽量远离液体，如果发现设备有进水的情况请立即断开适配器的电源，联系红色密码客服跟进处理。
4. 请勿自行改装或维修本产品，除本说明书指出可以快拆的部件，请勿拆装其他零配件。
5. 请勿使用涂料稀释剂、除胶剂等化学物品清洁本产品。

1. Please do not strike or drop this product. If the product is damaged, discontinue use immediately.
2. The operating temperature should be between -10 to 45°C, and the operating humidity should be ≤95%.
3. This product is not waterproof; keep it away from liquids as much as possible. If you notice any water ingress, disconnect the adapter's power supply immediately and contact Red Code customer service for further assistance.
4. Do not attempt to modify or repair this product yourself. Apart from parts specified in this manual that can be quickly detached, do not disassemble other components.
5. Avoid using paint thinners, adhesive removers, or other chemical substances to clean this product.

重要安全提示 ○ ○ ●

Important safety notice

3.注意 Attention

1. 产品需要摆放在平整的工作台上，否则会影响出豆称重精度。
2. 请勿将咖啡豆以外的物料放入拼豆机中出料。
3. 产品开机及使用过程中请留意状态灯及显示屏是否正常。
4. 本产品支持物联网，摆放空间需要有4G信号或Wifi信号。
5. 遭受撞击或者跌落冲击可能会损坏本产品的称重功能。
6. 使用过程中如果产品出现晃动会影响称重精度。
7. 本产品符合电磁装置的安全标准，有关任何涉及心脏起搏器或其他植入装置的问题，请在使用之前咨询医生或植入装置的供应商。
8. 本产品不适用于孩童、肢体不健全或感觉和精神有一定障碍或严重缺乏经验的人群使用，请在他人监护下安全使用本产品，并了解可能存在的风险。

1. The product needs to be placed on a flat workbench; otherwise, it will affect the accuracy of bean weighing.
2. Do not put materials other than coffee beans into the bean sorting machine for discharge.
3. During startup and use, please pay attention to whether the status light and display screen are functioning normally.
4. This product supports IoT, so the placement area needs to have a 4G signal or WiFi signal.
5. Impacts or drops may damage this product's weighing function.
6. If there is any shaking during use, it will affect weighing accuracy.
7. This product complies with electromagnetic device safety standards. For any issues related to pacemakers or other implanted devices, consult your doctor or device supplier before use.
8. This product is not suitable for children, individuals with physical disabilities, sensory impairments, mental disorders, or those severely lacking experience. Please ensure safe usage under supervision and understand potential risks.

基本 ● ● Basic

- 1.包装清单 Package Contents
- 2.参数 Specifications

本产品包含拼豆主机*1套、主机支腿*1副、适配器*1、适配器供电线*1、接豆杯*1套、200g砝码*1、说明书*1、合格证*1

This product includes: 1 set of the main unit, 1 pair of support legs for the main unit, 1 adapter, 1 power supply cable for the adapter, 1 set of bean collection cups, a 200g weight, an instruction manual, and a certificate of conformity.

基本 ● ○
Basic

1.包装清单 Package Contents

产品名称	XDosing G1
设备型号	RXK-XD-G1
外形规格	392（宽）*195（深）*378（高） mm
额定功率	30w
工作电压	12v
出豆精度	±0.3g： 90%以上； ±0.5g： 100%
出豆时间	6g平均5秒以内， 12g平均7秒以内
适配器输入电压	220v/50hz
产品重量	6.4kg
工作台要求	工作台平整，拼豆机放在上面不能晃动
执行标准	GB4706.38

基本 ○ ●

Basic

2.参数 Specifications

使用 ● ● ● ●

Usage

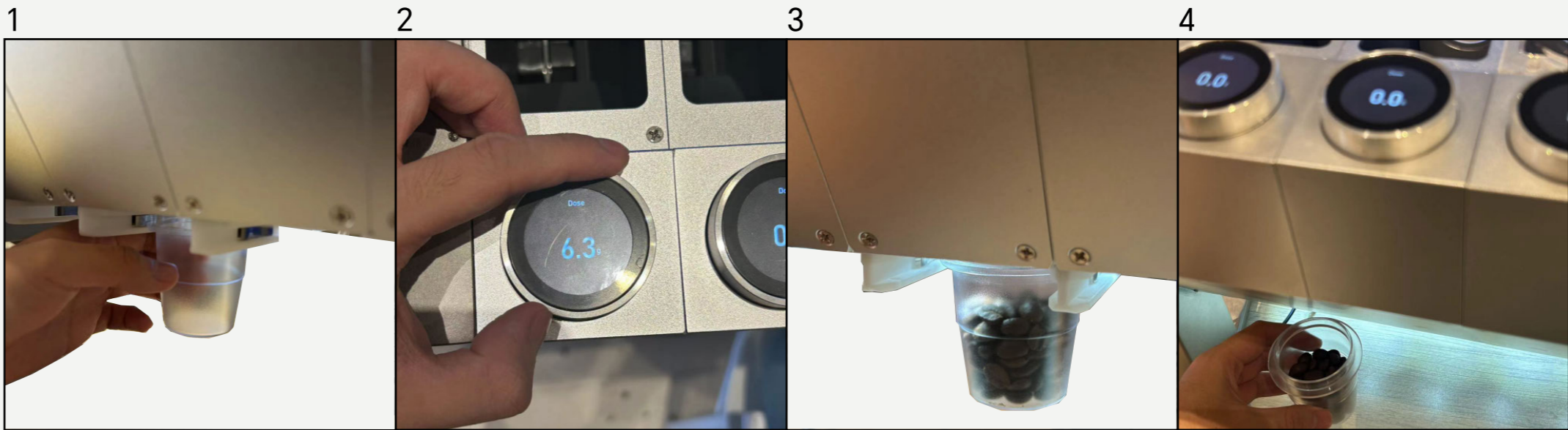
- 1.出豆 Eject Beans
- 2.清空豆仓 Empty Bean Hopper
- 3.标定重量 Calibrate Weight
- 4.清洁与维护 Cleaning and Maintenance

- 步骤 1
放好接豆杯
- 步骤 2
调节旋钮设定目标重量并按下旋钮屏确认
- 步骤 3
机器自动出豆
- 步骤 4
取走接豆杯用完咖啡豆后再放回原位

- Step 1
Place the coffee cup in position.
- Step 2
Adjust the knob to set the target weight and press the knob to confirm.
- Step 3
The machine will automatically dispense beans.
- Step 4
Remove the coffee cup, and after using up the coffee beans, return it to its original place.

使用 ● ○ ○ ○
Usage

1.出豆 Eject Beans

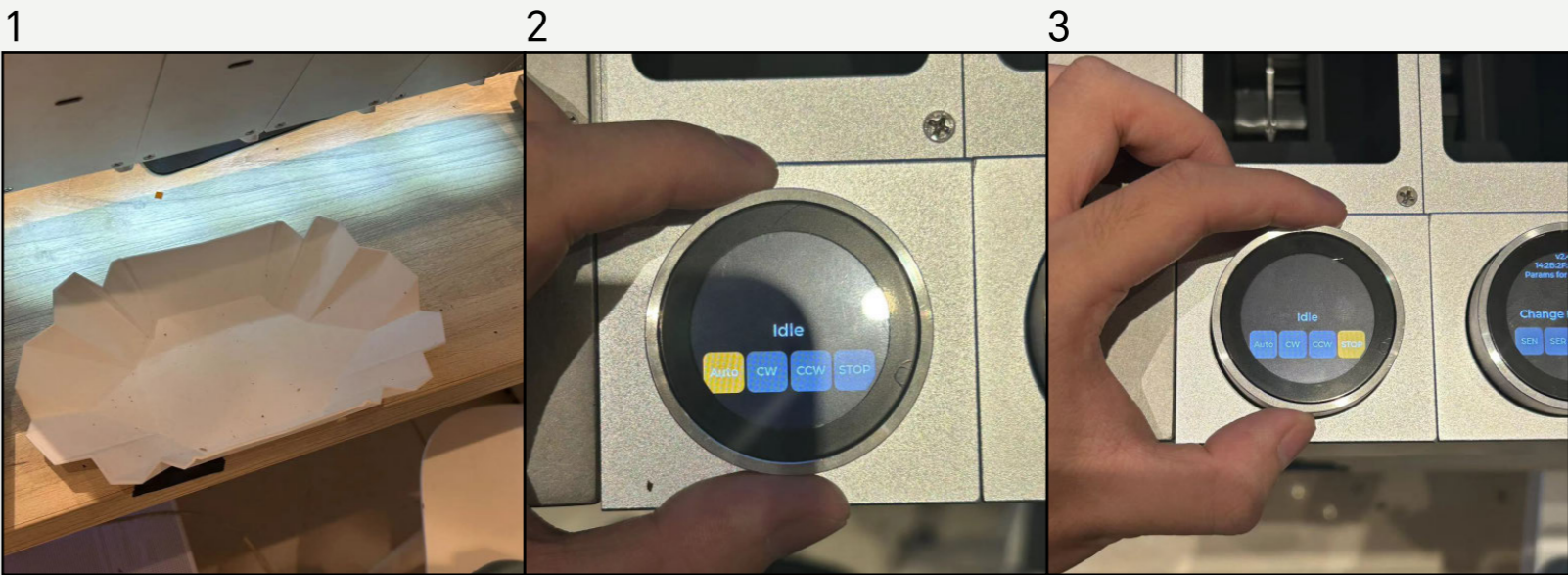


使用 ○ ● ○ ○ Usage

2.清空豆仓 Empty Bean Hopper

- 步骤1
放好大容量接豆容器
- 步骤2
长按旋钮屏三秒进入设置界面，点选EMPTY,点选
AUTO，开始自动清豆
- 步骤3
满仓清豆时间约60秒内，清豆过程中点击STOP可
以停止清豆

- Step 1
Place the large capacity bean container properly.
- Step 2
Press and hold the knob for three seconds to
enter the settings menu, select EMPTY, then
AUTO to start automatic bean clearing.
- Step 3
The full bin clearing time is approximately 60
seconds. During this process, you can click STOP
to halt the clearing.

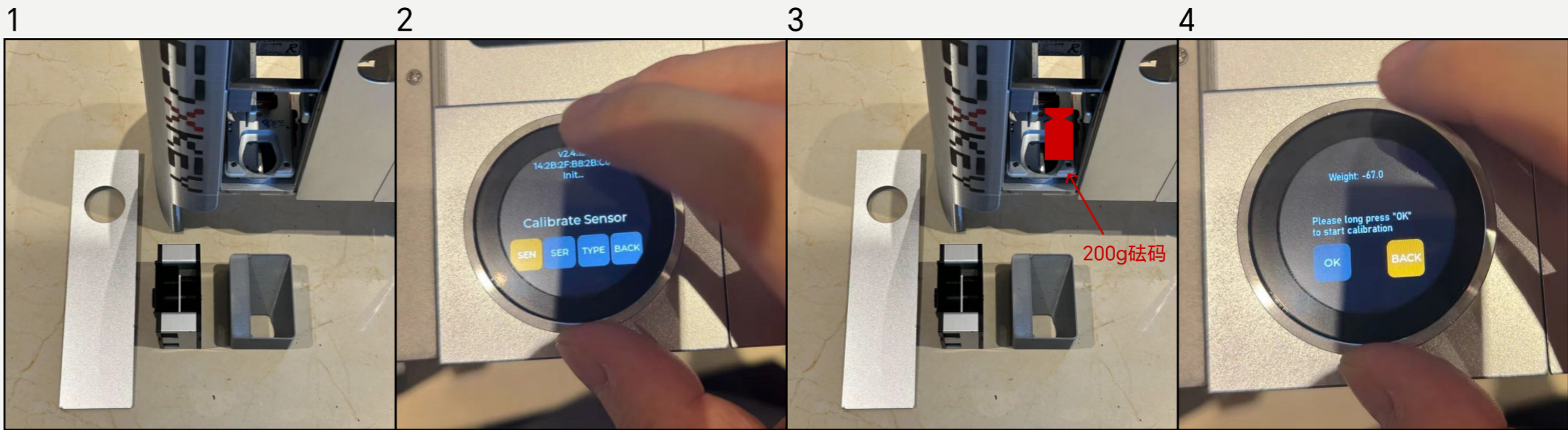


- 步骤1
拆掉前面板、出豆机构以及称重杯
- 步骤2
长按旋钮屏三秒进入设置界面，点选CAL,点选NES，点选ok并长按3秒，进入标定状态
- 步骤3
200g砝码放在称重杯下面的平台上，注意砝码侧边不能与机器接触，并按下ok，完成标定
- 步骤4
取出砝码，连续点选BACK进入设置界面，点选DOSE进入出豆界面，出豆测试标定成果

- Step 1
Remove the front panel, bean dispensing mechanism, and weighing cup.
- Step 2
Press and hold the knob screen for three seconds to enter the settings menu. Select CAL, then NES, press OK and hold for three seconds to enter calibration mode.
- Step 3
Place a 200g weight on the platform under the weighing cup. Ensure that the sides of the weight do not touch the machine. Press OK to complete calibration.
- Step 4
Remove the weight, repeatedly select BACK to return to the settings menu. Select DOSE to enter bean dispensing mode and test calibration results.

使用 ○ ○ ● ○ Usage

3.标定重量 Calibrate Weight

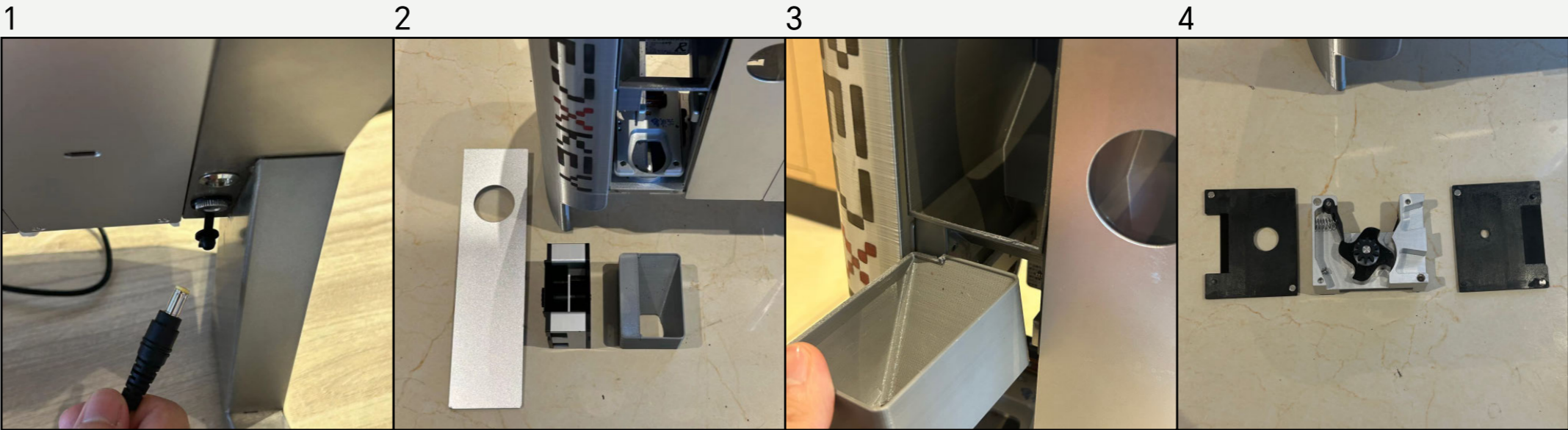


- 步骤1
产品断电
- 步骤2
拆掉前面板，取出出豆机构和称豆杯
- 步骤3
清理豆仓内壁和称豆杯
- 步骤4
拆掉出豆机构两侧的盖板后清理出豆机构内部

- Step 1
Power off the product.
- Step 2
Remove the front panel, then take out the bean dispensing mechanism and weighing cup.
- Step 3
Clean the inner walls of the bean hopper and the weighing cup.
- Step 4
After removing the covers on both sides of the bean dispensing mechanism, clean its interior.

使用 ○ ○ ○ ●
Usage

4.清洁与维护 Cleaning and Maintenance



其他 ● ● ● ● Advanced

- 1.故障排除 Troubleshooting
- 2.免责声明 Disclaimer
- 3.产品中有害物质的名称和含量 Names and Contents of Hazardous Substances in the Product
- 4.更多信息 More Information

其他 ● ○ ○ ○
Advanced

1.故障排除 Troubleshooting

1
故障：产品无法启动
检查：适配器状态灯是否点亮/产品开关是否按下
解决：适配器通电/打开产品开关

2
故障：其中一个模组不能启动
检查：产品是否进水
解决：联系红色密码客服介入处理

3
故障：出豆重量超过说明书偏差范围
检查：多次重复出豆看重量是否持续不准
解决：用随机的200g砝码重新标定,如果重新标定还是不准联系红色密码客服介入处理

1
Issue: Product won't start
Check: Is the adapter status light on? / Is the product switch pressed?
Solution: Power the adapter / Turn on the product switch

2
Issue: One of the modules won't start
Check: Has water entered the product?
Solution: Contact Red Code customer service for assistance

3
Issue: Bean output weight exceeds manual deviation range
Check: Repeatedly dispense beans to see if weight remains inaccurate
Solution: Recalibrate using a random 200g weight; if still inaccurate, contact Red Code customer service for assistance

- 1. 产品进水、遭受跌落冲撞等现象以及其他人为造成的损坏均不在保修范围内；
- 2. 保修期内未经过红色密码客服允许拆卸过的设备将不再享受保修服务。

1.Damage caused by water ingress, drops, collisions, or other human factors is not covered under the warranty;
2.Any device disassembled without authorization from Red Password customer service during the warranty period will no longer be eligible for warranty service.

其他 ○ ● ○ ○
Advanced

2.免责声明 Disclaimer

名称 Name	铅Pb	汞Hu	镉Cd	六价铬Cr6+	多溴联苯 PBBS	多溴二苯醚 PBDE
外壳 Housing	○	○	○	○	○	○
豆仓 Bean Hopper	○	○	○	○	○	○
出豆机构 Bean Dispenser	○	○	○	○	○	○
称重组件 Weighing Component	○	○	○	○	○	○
包装箱 Packaging Box	○	○	○	○	○	○
说明书 User Manual	○	○	○	○	○	○

○：表示该有毒有害物质在该部件所有均质材料中的含量 均在SJ/T 11364-2014 标准规定的限量要求以下
X：表示该有毒有害物质在该部件的某一单一质材料中的含量超出SJ/T 11364-2015 标准规定的限量要求

其他 ○ ○ ● ○
Advanced

3.产品中有害物质的名称和含量 Names and Contents of Hazardous Substances in the Product

制造商：红色密码(广州)智能科技有限公司
地 址：广东省广州市番禺区同创誉城5栋1007
生产商：博仕智能装备(江门)有限公司
地 址：江门市新会区会城江裕路5号
客服电话：

Manufacturer: Red Code (Guangzhou) Intelligent Technology Co., Ltd.
Address: Building 1007, Tongchuang Yucheng, Panyu District, Guangzhou City, Guangdong Province
Producer: Boshi Intelligent Equipment (Jiangmen) Co., Ltd.
Address: No. 5 Jiangyu Road, Huicheng Town, Xinhui District, Jiangmen City
Customer Service Hotline:

更多产品使用信息，
请扫描二维码。



For more product information,
please scan the QR code.

其他 ○ ○ ○ ●
Advanced

4.更多信息 More Information

FCC Warning:

This equipment has been tested and found to comply with the limits for a Class B digital device, pursuant to part 15 of the FCC Rules. These limits are designed to provide reasonable protection against harmful interference in a residential installation. This equipment generates, uses and can radiate radio frequency energy and, if not installed and used in accordance with the instructions, may cause harmful interference to radio communications. However, there is no guarantee that interference will not occur in a particular installation. If this equipment does cause harmful interference to radio or television reception, which can be determined by turning the equipment off and on, the user is encouraged to try to correct the interference by one or more of the following measures:

- Reorient or relocate the receiving antenna.
- Increase the separation between the equipment and receiver.
- Connect the equipment into an outlet on a circuit different from that to which the receiver is connected.
- Consult the dealer or an experienced radio/TV technician for help.

Caution: Any changes or modifications to this device not explicitly approved by manufacturer could void your authority to operate this equipment.

This device complies with part 15 of the FCC Rules. Operation is subject to the following two conditions:

(1) This device may not cause harmful interference, and (2) this device must accept any interference received, including interference that may cause undesired operation.

This equipment complies with FCC radiation exposure limits set forth for an uncontrolled environment. This equipment should be installed and operated with minimum distance 0cm between the radiator and your body.