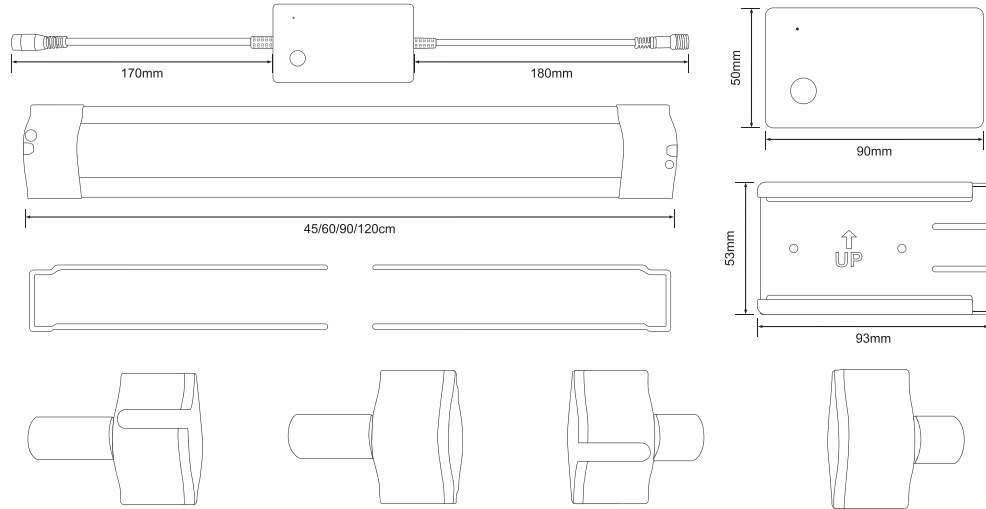


RGBW Aquarium Light



Lighting Controller

Product Name
App Control RGBW Aquarium Lighting Controller

Model No.
CL01

Voltage
DC24V

Material
ABS

Function
Programmable 24 Hour Light Cycle

Application
Aquarium Lighting

Aquarium Light

Product Name
RGBW Aquarium Light

Model No.
L01-45/60/90/120

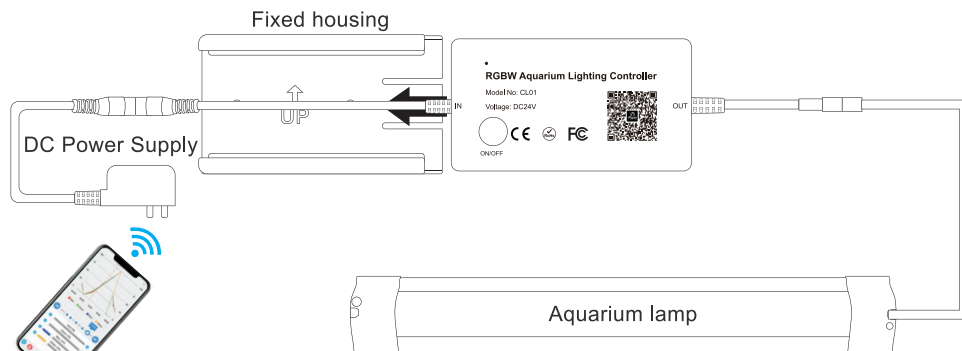
Voltage
DC24V

Waterproof
IP67 Rating

Application
Aquarium Lighting

Function
Programmable 24 Hour Light Cycle

Installation Diagram



Product Description

LED Output

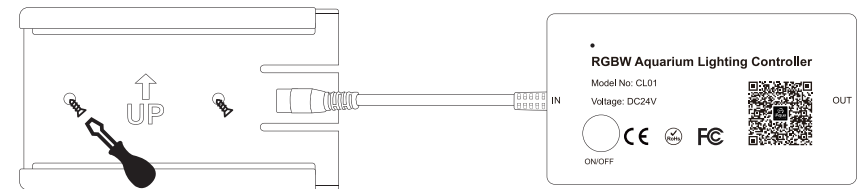
Indicator Light

Switch Button

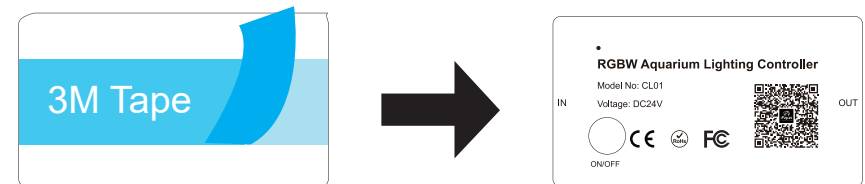
APP QR Code

Power input

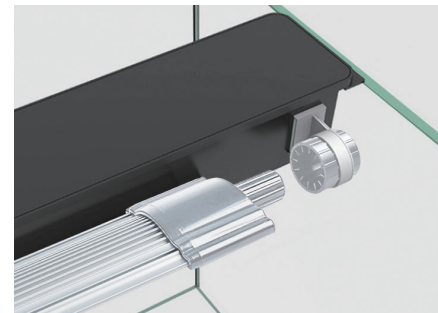
Fixed Housing Mounting



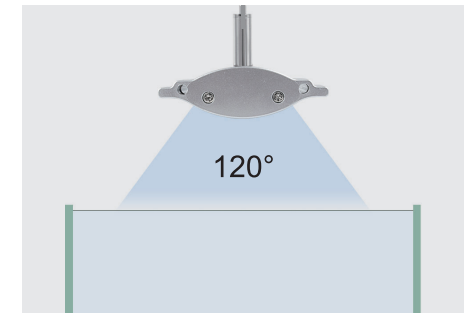
3M Tape Mounting



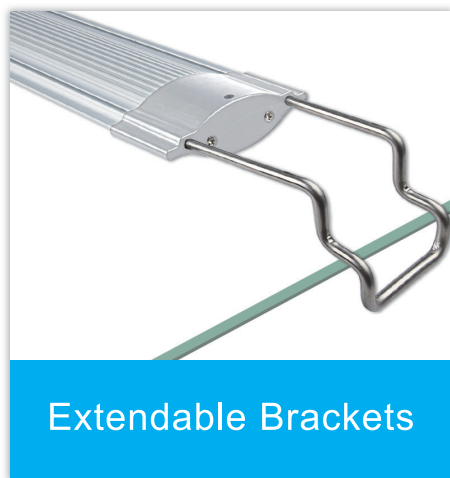
Aquarium Light Installation



Fixture Fixing



Beam Angle



Extendable Brackets



Stainless Steel Cable Kit Self-locking

iAqua Lighting APP Control Instructions

1.Download/Install iAqua Lighting APP

Download [iAqua Lighting] APP.

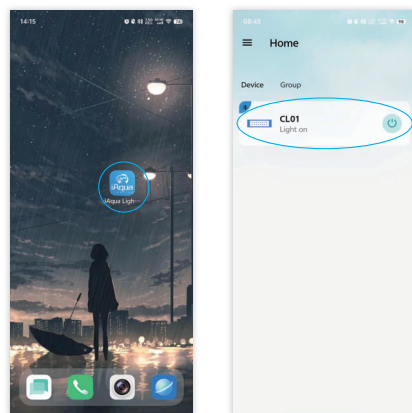
(Search for [iAqua Lighting] in Apple / Google store or scan the QR code to download the APP.)



2.Connect APP

Connect the controllers to the power supply and turn on the Bluetooth of the mobile phone.

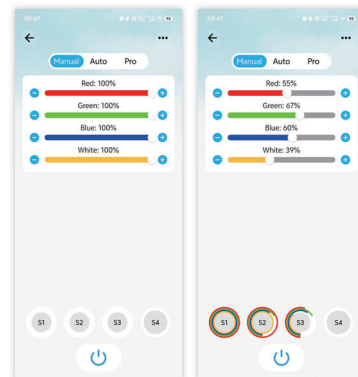
Enter the APP to connect your device automatically.



3.APP Function

Setting the light manually

Manually set the light color and save it as S1-S4



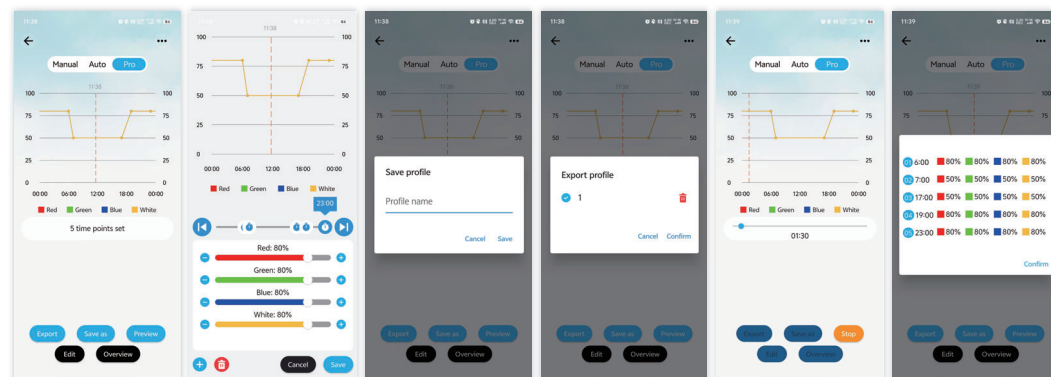
Automatic light adjustment

Sunrise/Daylight/Sunset/Night/Sleep. Five lighting modes, set the color/time of each mode to simulate nature



24 Hour Light Cycle

Within 24 hours, add multiple time points and set the light color for each time.



FCC Warning:

This equipment has been tested and found to comply with the limits for a Class B digital device, pursuant to part 15 of the FCC Rules. These limits are designed to provide reasonable protection against harmful interference in a residential installation. This equipment generates, uses and can radiate radio frequency energy and, if not installed and used in accordance with the instructions, may cause harmful interference to radio communications. However, there is no guarantee that interference will not occur in a particular installation. If this equipment does cause harmful interference to radio or television reception, which can be determined by turning the equipment off and on, the user is encouraged to try to correct the interference by one or more of the following measures:

- Reorient or relocate the receiving antenna.
- Increase the separation between the equipment and receiver.
- Connect the equipment into an outlet on a circuit different from that to which the receiver is connected.
- Consult the dealer or an experienced radio/TV technician for help.

Caution: Any changes or modifications to this device not explicitly approved by manufacturer could void your authority to operate this equipment.

This device complies with part 15 of the FCC Rules. Operation is subject to the following two conditions:

(1) This device may not cause harmful interference, and (2) this device must accept any interference received, including interference that may cause undesired operation.

This equipment complies with FCC radiation exposure limits set forth for an uncontrolled environment. This equipment should be installed and operated with minimum distance 0cm between the radiator and your body.