

Shenzhen Puda Micro High-tech Co., LTD

SPECIFICATION FOR APPROVAL

Model: WIFI: SLK-PDW-B-1501-B

Supplier Name: Shenzhen Puda Micro High-tech Co., LTD
Supplier Address: Room 716, Block A, Huafeng Jinyuan Business
Building, No. 300, Xixiang Avenue, Bao 'an District, Shenzhen City.
Tel: 0755-23220800. Fax: 0755-23220700

Antenna

1. Explanation of Product number :

S L K - P D W - B - 1 5 0 I - B

1 2 3 4



Product Code:

(1) Customer:

JC:

(2) Antenna Name:

B: Brass(4.4*23*1.1)

(3) Cable:

150I: 150MM一代I-PEX

(4) Cable Color:

B: Black

2. Features

- *Stable and reliable in performances
- *Compact size
- *RoHS compliance

3. Applications

- * IEEE802.11 (b/g/n)
- * Hand-held devices when WIFI (802.11 b/g/n) functions are needed

4. Description

Holy bond's Brass antenna series are specially designed for WIFI (802.11b/g/n) applications. Based on Holy bond's proprietary design and processes, this Brass antenna has excellent stability and sensitivity to consistently provide high signal reception efficiency.

5. Electrical Specifications

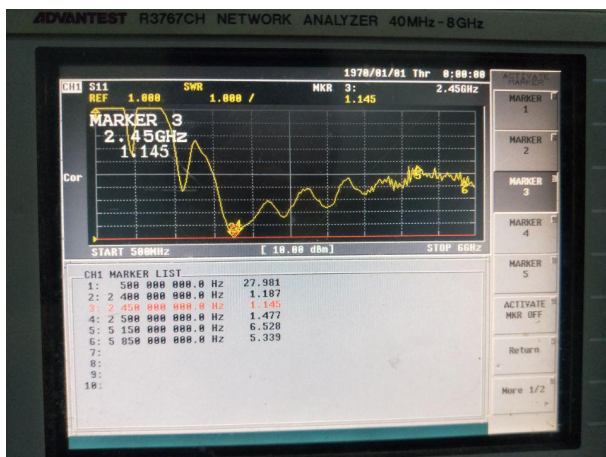
5-1

Characteristics	Specifications	Unit
Outline Dimensions	4.4 x 23 x 1.1	mm
Center Frequency	2.4-2.5	GHz
Bandwidth(under-10dB return loss)	130min	MHz
VSWR	2max	
Impedance	50	Ω

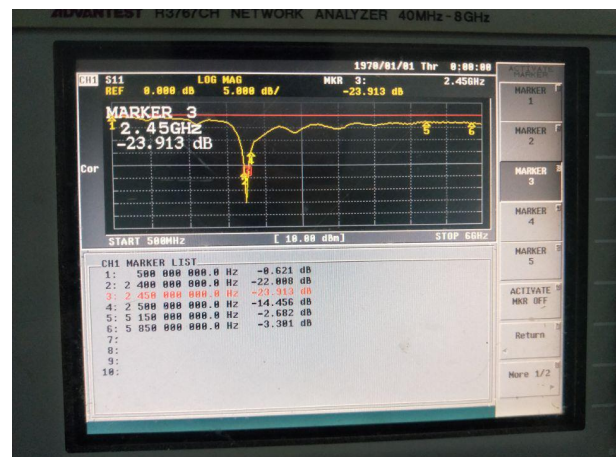
* Center frequency will be offset to working frequency according to the conditions of user's ground plane and radome.

5-2

VSWR



S11

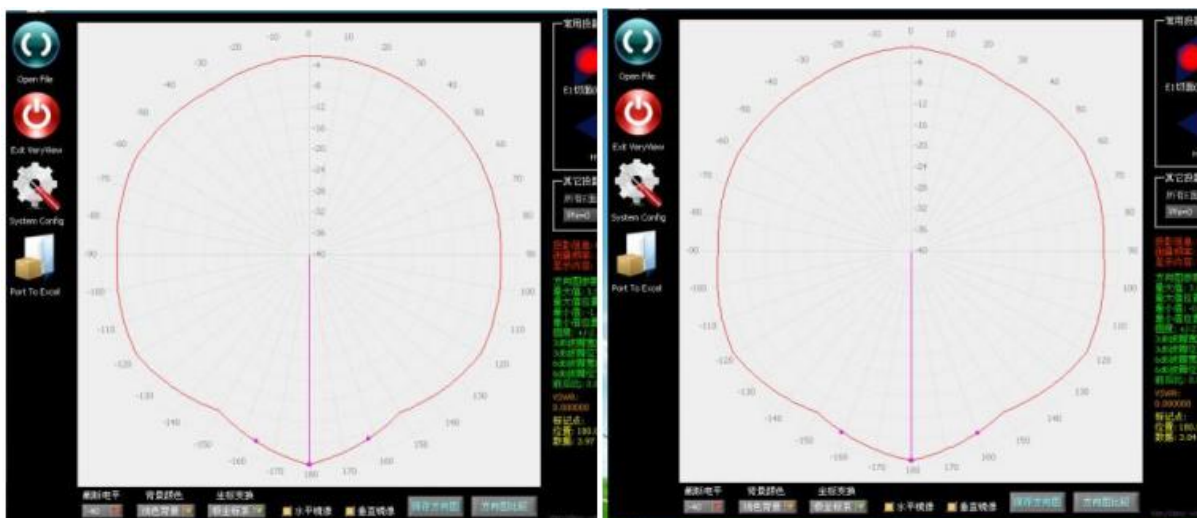


5-3.WIFI Antenna Gain/Efficiency/Radiation Pattern of 3D

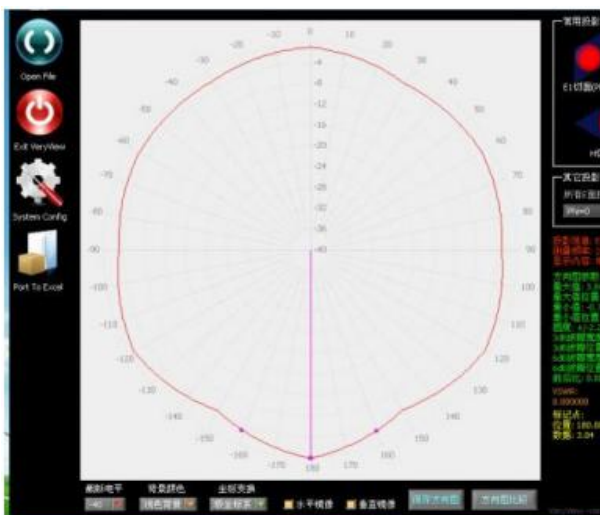
Frequency(MHz)	Efficiency (%)	Gain(dBi)
2400	54.6%	1.21
2450	56.0%	1.54
2500	53.5%	1.25

2400MHZ Gain: 0.74-1.21dBi

2450MHZ Gain: 0.85-1.54dBi

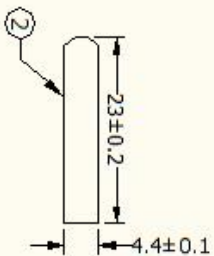
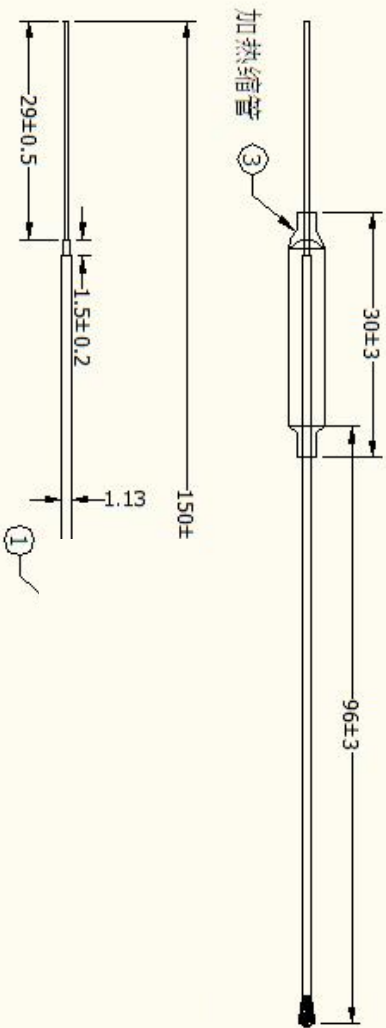


2500MHZ Gain: 0.69-1.25dBi



ROHS

REV.	CONTENT	DATE
A		



TITLE: 2.4GHz 2dBi Antenna L=150mm		设计		日期	2019-08-10
P/N: SLK-PDW-B-150I-B		审核	DR:	日期	
客户代码		批准	DR:	日期	
材质					
比例					
FIT					
第三角					
单位					
NO		DESCRIPTION	QTY	REMARK	
1	Cable	O.D:1.13 Cable:Black	1		
2	Brass	Color:Silver	1		
3	Heat shrinkable tube	Color:Black	1		

6. Antenna Dimensions (unit: mm)