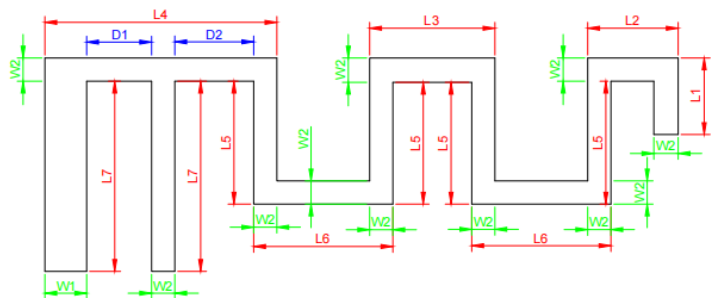


1. Antenna Description:

Antenna type	PCB antenna
Model	6519
Frequency range	2400-2500MHz
Manufacturer	TPV Audio-Visual Technology (Shenzhen) Co., Ltd.
Address	Room 4201, Block A, Building 2, Shenzhen Bay Innovation and Technology Center, 3156 South Keyuan Road, Yuehai Subdistrict, Nanshan District, Shenzhen
ANT Peak Gain	1.50 dBi

2. Antenna Photo:



L1	1.62mm
L2	1.92mm
L3	2.66mm
L4	4.92mm
L5	2.60mm
L6	2.95mm
L7	4.04mm
W1	0.89mm
W2	3.94mm
D1	1.38mm
D2	1.67mm

3. Test Equipment & Conditions

3.1 Test instrument

VSWR is tested using Agilent E5071B connected to a hand mechanism, and the status is free space.

3.2 Test environment and methods

Dark room specifications: ETS-743

TD-SCDMA test equipment: StarPoint SP6010/Agilent 8960

LTE-TDD/FDD-SCDMA test equipment: StarPoint SP8011/CMW500

WCDMA/GSM/CDMA test equipment: Agilent 8960

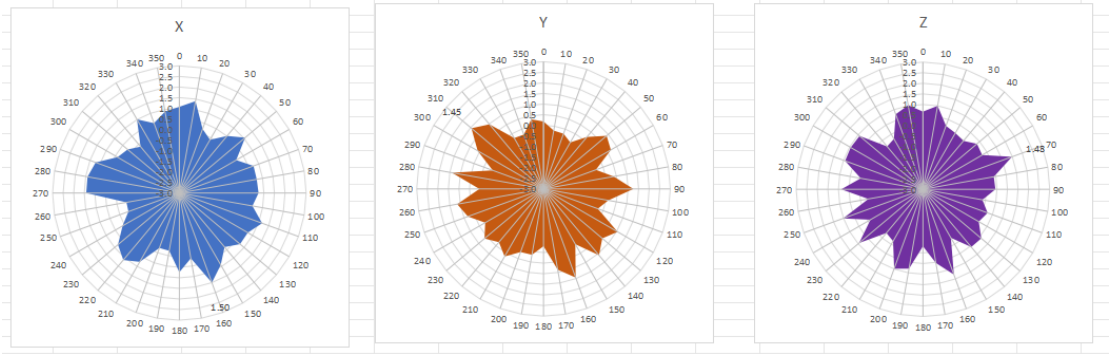
Passive efficiency testing equipment: Agilent Technologies E5071B



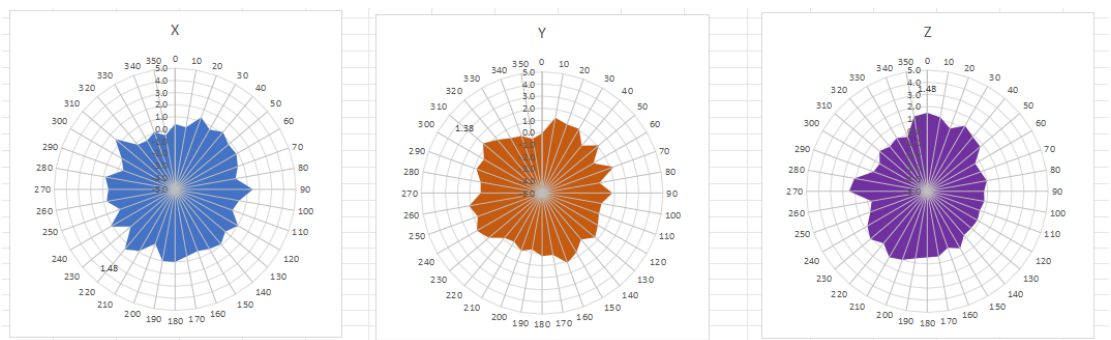
4 . Antenna Radiation Pattern



2400MHz



2450MHz



2500MHz

