

<p>有迹 Pet's Journey</p> <p><b>Certificate of Conformity</b></p> <p>Inspection Date: _____</p> <p>Inspection Personnel: _____</p>	<p>Product Anti-counterfeiting Label</p>
--	--



QR code for  
installation video



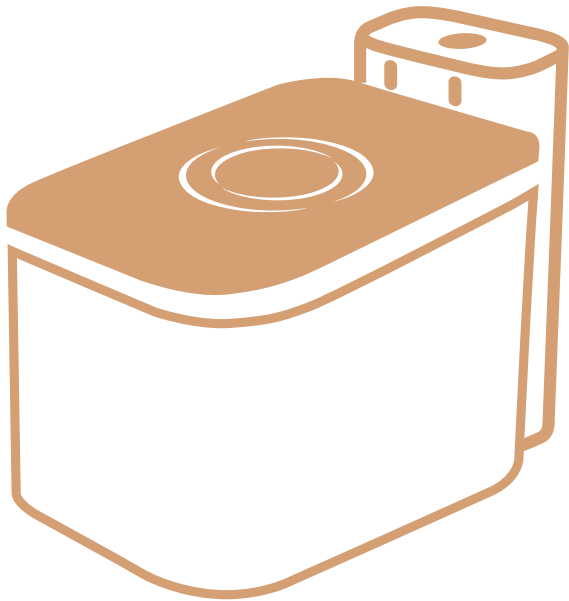
QR code of  
Pet's journey App

Manufacturer: Shenzhen Wei Wu Sen Lin Technology Company Limited  
Address: Room 504, 5/F., Tower C, Amazing Plaza, 4088 Qiaoxiang Rd,  
Nanshan, Shenzhen, Guangdong Province, 518074, China



## **Pet's Journey Pet Water Fountain**

Instruction manual



Pet's Journey Automatic Pet Feeder

## IMPORTANT NOTICE

1. Please read this product manual carefully before use. Once the product is installed or used, it means that you have read it carefully and accepted the following safety precautions.
2. Our company shall not be responsible for any accidents or losses caused by improper operations, nor shall it bear any legal liability.
3. The right to interpret and modify this manual belongs to our company.

## PRECAUTIONS

1. Please install and use this device strictly in accordance with this manual.
2. Please use the original power adapter. Otherwise, it may damage the device or cause it to fail to work properly, and even pose potential safety hazards.
3. Please properly cover or store the power cord to prevent pets from biting it and causing potential safety hazards.
4. It is recommended to use the device in an indoor environment and avoid high temperatures and direct sunlight.
5. Do not place any objects within 15 cm on the left and right sides and 30 cm in front of the device to avoid affecting the infrared sensing data monitoring.
6. Please place the device on a dry, stable and flat surface when using it to avoid overturning the device and ensure its normal operation.
7. The base of the device main unit and the power interface are strictly prohibited from being washed with water or soaked in water.
8. Please avoid using corrosive cleaning liquids when cleaning the device to avoid surface damage.
9. Children should use this product under the guidance of adults.
10. If you encounter any problems in using the product, please contact our customer service in a timely manner.

“Changes or modifications not expressly approved by the party responsible for compliance could void the user’s authority to operate the equipment”

“This device complies with part 15 of the FCC Rules. Operation is subject to the following two conditions:

- (1) This device may not cause harmful interference, and
- (2) this device must accept any interference received, including interference that may cause undesired operation.”

## RADIATION EXPOSURE STATEMENT

1.This equipment complies with FCC radiation exposure limits set forth for an uncontrolled environment.

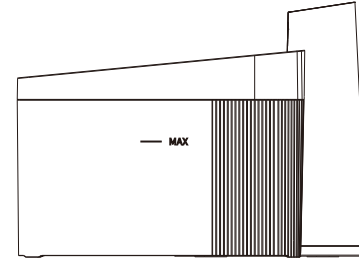
This equipment should be installed and operated with minimum distance 20cm between the radiator & your body.

2.The device has been evaluated to meet general RF exposure requirement

This equipment has been tested and found to comply with the limits for a Class B digital device, pursuant to Part 15 of the FCC Rules. These limits are designed to provide reasonable protection against harmful interference in a residential installation. This equipment generates uses and can radiate radio frequency energy and, if not installed and used in accordance with the instructions, may cause harmful interference to radio communications. However, there is no guarantee that interference will not occur in a particular installation. If this equipment does cause harmful interference to radio or television reception, which can be determined by turning the equipment off and on, the user is encouraged to try to correct the interference by one of the following measures:

- Reorient or relocate the receiving antenna.
- Increase the separation between the equipment and receiver.
- Connect the equipment into an outlet on a circuit different from that to which the receiver is connected.
- Consult the dealer or an experienced radio/TV technician for help.

## Product Introduction



Main Unit



Closed Filter Element



Wireless Water Pump



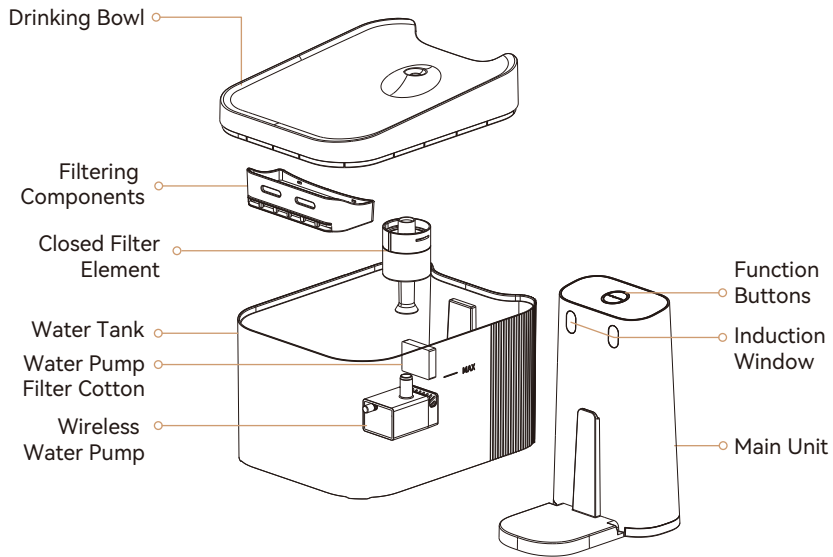
Filtering Components



Adapter



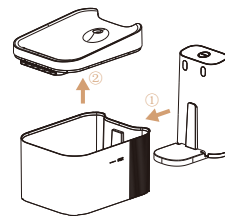
Instruction Manual



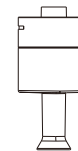
## Instructions for Use

### Step 1: Install the filter element

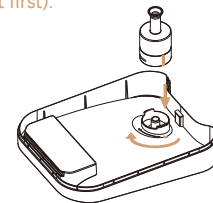
(Before installation, clean all accessories except the main unit first).



1. Take out the water tank assembly and open the drinking bowl.



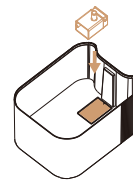
2. Take out the filter element. Rinse it with clean water before use and then install it to avoid impurities when filtering during the first use.



\*Turn clockwise to lock it. Turn counterclockwise to remove it.

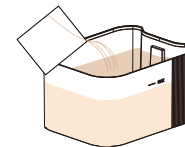
3. Align and fasten the filter element with the drinking bowl.

### Step 2: Install the water pump

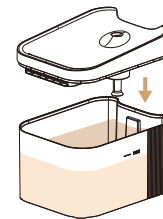


Just put the water pump into the slot position.

### Step 3: Add drinking water

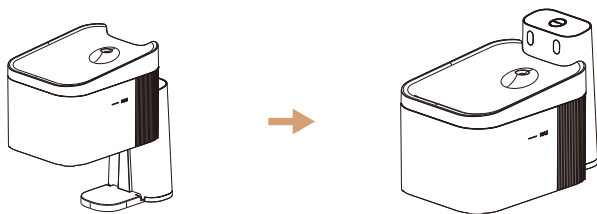


1. Do not add water beyond the MAX line.



2. Cover the drinking bowl.

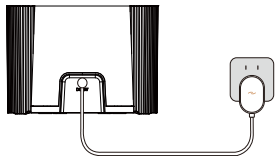
Step 4: Install the water tank back onto the main unit.



Step 5: Place the device in a proper position.

1. Place the device on a stable and level surface. Do not tip it over, otherwise it may lead to abnormal operation of the device or water spillage.
2. Please do not place the device too close to the power strip or power plug. Avoid water being spilled onto the power source by cats while they are drinking, which may cause unnecessary accidents.
3. Do not place any objects within 15 cm on the left and right sides and 30 cm in front of the device. If objects are placed too close to the device, it will easily interfere with the sensors and affect the recognition of cats' drinking.

## Power on and connect the device.



QR Code for  
Pet's Journey App

## Function Description

### 1. Water Source Working Modes (Set via the app)

**Circulation Mode:** The device continuously discharges water (It is recommended to turn on this mode as it can attract cats to drink more water).

**Induction Mode:** The device starts the water circulation when infrared sensors detect that a cat is approaching.

**Intermittent Gushing Spring Mode:** Water flows for 2 minutes and then stops for 18 minutes, repeating this cycle.

### 2. Filter Element Replacement Reminder and Countdown Monitoring

The device will automatically conduct a countdown for the usage time of the filter element based on the activation time of the filter element. The app will display the progress of the filter element usage and send reminders. When the filter element expires, the app will give a reminder, and the indicator light on the device will also flash red to indicate expiration and remind you to replace the filter element. When the filter element expires, please take out the old filter element, install the new one, and then double-click the function button. Once the device changes from the red light flashing to the white light staying on constantly, it means the new filter element has been activated. The reactivation of the filter element can also be operated through the app.

### 3. Drinking Water Data Monitoring

The device is equipped with infrared sensors. After a cat approaches and drinks water, the device will record the number of times and the duration of drinking, and display them in the app. Users can check the cats' drinking activities and data comparison through the app.

### 4. Water Shortage Reminder

The device will give reminders according to the water volume in the water tank. When there is a shortage of water, both the device and the app will send water shortage reminders. Please handle it in a timely manner.

### 5. Do Not Disturb Setting

In the app, you can set to turn off the device indicator light or sound for a fixed period of time. However, when the device is abnormal, the indicator light will still give reminders.

### 6. Child Lock Setting

In the app, you can turn on or off the child lock for the device to avoid accidental operations by children.

## Button Operation and Indicator Light

Components	Operation	Status
Device buttons	Double-click	Activate the filter element
	Press and hold for 5 seconds	Reconfigure the network
	Press and hold for 10 seconds	Restore factory settings
Indicator lights	Slow flashing white light	Not connected to the network
	Fast flashing white light	Connecting to the network
	White light stays on constantly	The device is in normal use
	Slow flashing red light	The filter element has expired
	Red light stays on constantly	The water tank is short of water / The device is abnormal

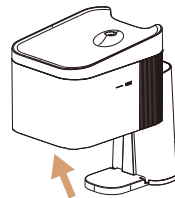
## Cleaning and Maintenance

1. The water tank assembly can be cleaned and maintained thoroughly, while the base of the main unit can only be cleaned by wiping. It is prohibited to wash or soak it in water!

\*It is recommended to clean the water tank assembly at least once every 15 days or so. Usually, you can just add water in time when the water level reminder indicates insufficiency.

\*It is recommended to clean the filter cotton inside the water tank once a week to avoid impurities affecting the water outlet effect.

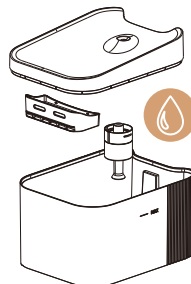
\*You can use neutral cleaning solutions for cleaning, but please avoid cleaning solutions containing alcohol or chemical reagents, as they may corrode the product.



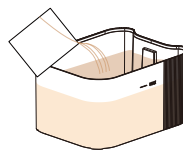
Step 1: Take out the water tank assembly.



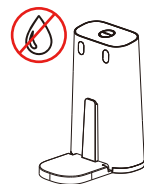
Step 3: Wipe them clean and complete the assembly of all components.



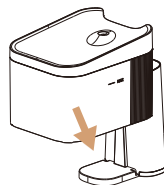
Step 2: Disassemble and wash each component.



Step 4: Fill the water tank with water and then install the water tank assembly back onto the main unit.



Note: It is strictly prohibited to wash the main unit with water.



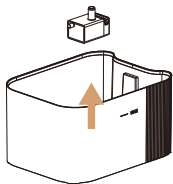
## 2. Instructions for Cleaning and Maintenance of the Water Pump

\*Keep children or pets away from the disassembled and washed water pump to prevent them from accidentally swallowing it.

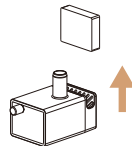
\*Never use corrosive detergents for cleaning.

\*The inner cover of the water pump is rather tightly closed. Tools can be used to help open it. Do not use your fingernails to avoid getting hurt.

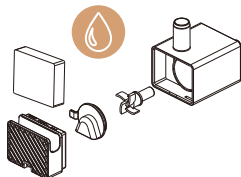
\*When installing the water pump after cleaning, please make sure that the water pump is installed into the groove of the water pump in the water tank and closely attached to the bottom of the groove. Otherwise, it will affect the wireless power supply and cause the device to malfunction.



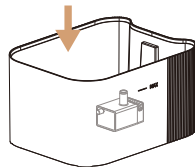
Step 1: Remove the water pump from the water tank.



Step 2: Take out the filter cotton of the water pump.



Step 3: Open the cover of the water pump and clean each part.



Step 4: Put the parts back in their original positions and reinstall the water pump onto the water tank.

## Frequently Asked Questions

Q: The device doesn't light up or give any indication when plugged into the power supply.

A: Power it on again. If there is still no response, please contact customer service.

Q: Why doesn't the device dispense water when the red light is flashing or staying on constantly?

A: If the red light is flashing, it means the filter element has expired. Please replace it in time. If the red light stays on constantly, you can check it through the App. If you can't find a solution, please contact customer service.

Q: The water outlet of the water dispenser is very small while the device indicates with the white light staying on constantly. What's going on?

A: It may be that the water pump is blocked. You need to turn off the power, clean the filter cotton of the drinking tray, keep the water source in the water tank clean and clean the water pump as well.

It may also be that the filter element is blocked. Please check the usage time of the filter element or whether there are foreign objects blocking it. Try replacing it with a new one or taking it off and rinsing it.

## Product Specifications

Product Name: Pet's Journey Pet Water Fountain

Product Model: YJE010

Product Capacity: 2.2L

Product Dimensions: 273 \* 172 \* 199mm

Rated Voltage: 5V  $\overline{\sim}$  1A

Rated Power: 5W

This device contains radio transmission modules with the model approval code (respectively) of CMIIT ID: 2020DP6462.

## | After-Sales Service Card

### Warranty Regulations

In case of product performance failures caused by non-human damage during the warranty period, the following Three Guarantees services can be enjoyed:

- 1.If there are quality problems with this product within 7 days from the date of purchase, consumers can choose to get a one-time refund for the shipping price and return the product, or replace it with a product of the same model and specifications.
- 2.If there are quality problems with this product within 15 days from the date of purchase, consumers can choose to replace it with a product of the same model and specifications.
- 3.The Three Guarantees period for this product is half a year.
- 4.This card shall not be altered, otherwise it will be regarded as an invalid voucher.
- 5.This card will only take effect after being stamped by the selling unit.

### Non-Warranty Regulations

The following situations (but not limited to the following) are not covered by the "Three Guarantees":

- 1.Those without the "Three Guarantees" voucher, lacking a valid invoice, or having an expired "Three Guarantees" service validity period.
- 2.Damages caused by failure to use, maintain, and store the product as required in the user manual.
- 3.Damages caused by force majeure such as fire, lightning strikes, and floods.

## | Warranty Card

Customer Name		Customer's Telephone Number	
Customer Address			
Purchase Date			
Reason for Malfunction			

Product Name		Signature of Maintenance Personnel	
Repair Submission Situation			
Date of Repair Submission			



尺寸：125\*125mm

材质：128g双铜纸+骑马订，16页

工艺：四色印刷