

Firstly, congratulations on owning this RT01 radar sensing bicycle taillight. Below, we will explain in detail the specific features of this product and how to use it.

FEATURE:

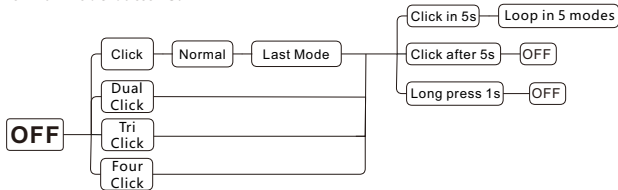
- Adopting 20x2835 ultra high brightness red LED, the tail light can be clearly observed from 500 meters away;
- Using micrometer wave radar, it can detect objects approaching within a 30 meter moment distance, Horizontal 54 degrees , and Vertical 27 degrees , and issue warnings;
- Equipped with built-in polymer lithium batteries, capable of charging up to 500 times;
- Multiple luminous modes, suitable for various usage scenarios;
- Meets IP64 protection level and can adapt to various complex outdoor environments;
- Can be charged through the TYPE-C port;
- Large capacity batteries support extended usage time

SPECIFICATION:

Model: RT01;
Name: Radar sensing bicycle taillights;
LED: 20x2835 Ultra bright red light LED;
Battery: Polymer lithium batteries;
Visible distance: 500m;
Work time: High brightness 4h, Breathing 4.5H, Strobe 5.5H, Slow strobe 13H, Warning strobe 11H, Snake run 36H, Double snake 36H;
Size: 59x39x31mm;
Weight: 60g;
Material: ABS engineering plastic.

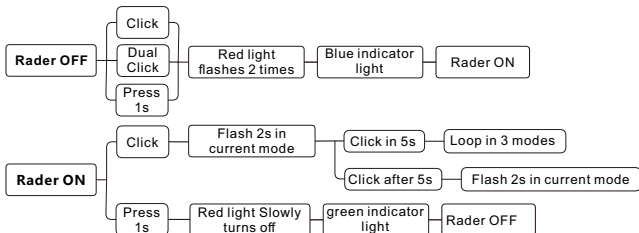
LIGHTING MODE DESCRIPTION:

Normal mode buttons:



Normal mode: Bright->Strobe->Slow strobe->Warning strobe->Breathing->Climbing snake->Double snake, following this cycle.

Rader button:



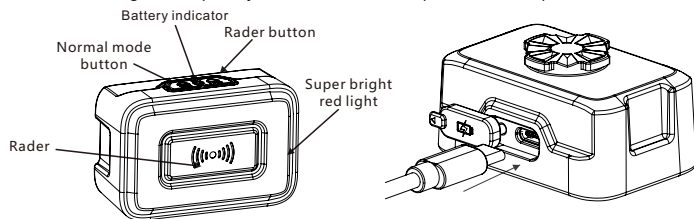
Rader mode: Bright->Strobe-> Fast Breathing, following this cycle.

POWER INDICATOR INSTRUCTIONS:

- When using the product:
 Blue light: Rader ON;
 Green light: Capacity >= 10%;
 Red light flash: Capacity < 10% .
- Charging in progress:
 Red breathing flash: Capacity < 99%
 Green light: Capacity > 99%.

CHARGING INSTRUCTIONS:

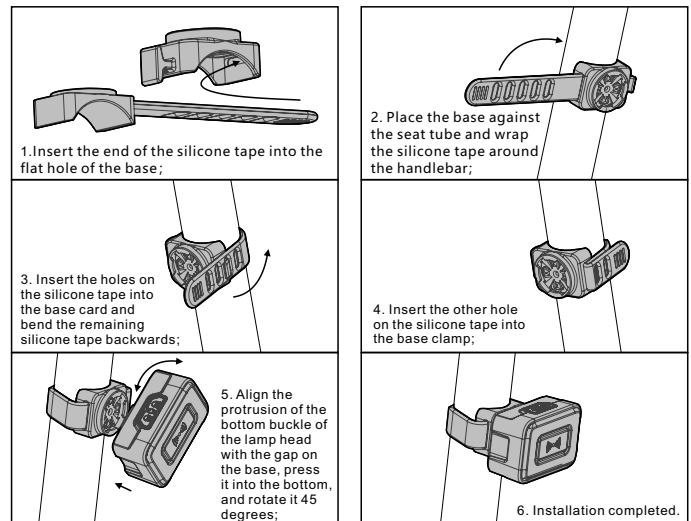
Open the waterproof charging plug at the bottom of the product, insert the TYPE-C plug of the equipped charging cable into the charging hole, and insert the USB plug of the charging cable into any 5V USB charger (not standard);



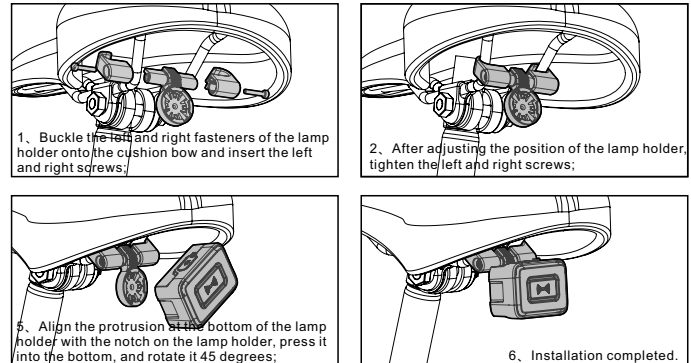
Catalogue and technical requirements for low-power short-range radio transmission equipment:

1. Specific terms: Class H equipment
 Usage frequency: 24-24.25GHz
 Usage scenario: On the street
 Antenna type: patch antenna
 Performance/Control: Uncontrollable and adjustable micro emission power ;
 Instructions for adjusting and switching products: On/off, that is, on/off, micro power radio transmitter
2. Unauthorized changes to usage scenarios or conditions, expansion of transmission frequency range, and increase of transmission power are not allowed. The transmission antenna shall not be changed without authorization, including the installation of additional RF power amplifiers.
3. It is not allowed to cause harmful interference to other legitimate radio stations, nor is it allowed to claim protection from harmful interference. Disturbance protection.
4. Industrial, scientific, and medical (ISM) application equipment that should withstand interference from radiated radio frequency energy, or interference from other legitimate radio stations.

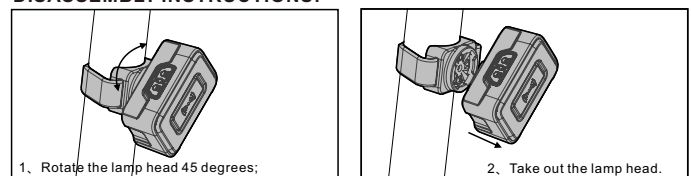
HOW TO INSTALL ON THE SEAT TUBE:



HOW TO INSTALL UNDER THE SEAT CUSHION:



DISASSEMBLY INSTRUCTIONS:



PRECAUTIONS:

1. This product is only applicable to IP64 protection grade. Do not put this light into water or fire, do not expose it for a long time;
 2. If the light is not being used for a long time, please keep the product fully charged, and recharge the light once every three months;
 3. When operating this product, please pull over to ensure safety.
- Please take attention that changes or modification not expressly approved by the party responsible for compliance could void the user's authority to operate the equipment. This device complies with Part 15 of the FCC Rules. Operation is subject to the following two conditions:
- (1) This device may not cause harmful interference, and
 - (2) This device must accept any interference received, including interference that may cause undesired operation.
- This equipment complies with FCC radiation exposure limits set forth for an uncontrolled environment.