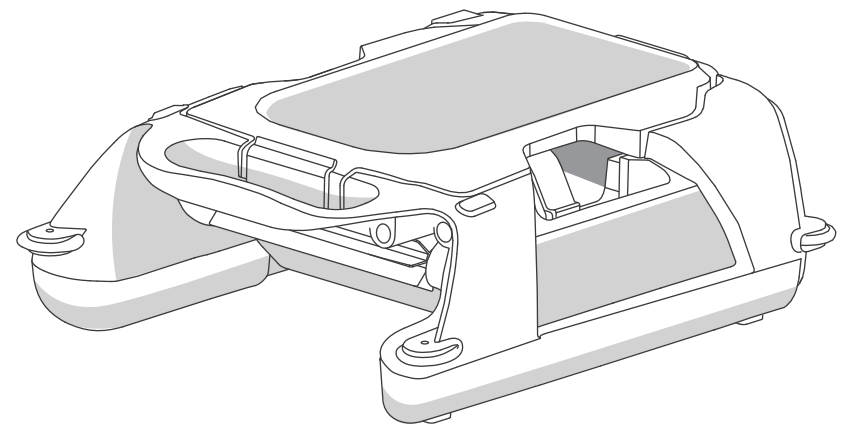




USER MANNUAL

HIPPOBOT
H1



1 SAFETY REGULATIONS

1.1 WARNING AND CAUTIONS

Please read this manual carefully and operate the HIPPOBOT in accordance with the instruction. HIPPOBOT is not responsible for any losses or injuries caused by improper use of this device.

To ensure the safety and get the best performance from the device, please take a moment to review and follow these guidelines.

1.1.1 SAFETY CONSIDERATION

- Do not activate the robot when people or animals are in the pool.
- Keep children from riding or playing with the robot. The skimmer robot is not a toy, accidental activation may cause injury.
- Ensure children and pets are at a safe distance while the robot is operating.
- Always power off the robot before removing it from the pool or performing any maintenance.

1.1.2 GENERAL WARNINGS

- Avoid dropping, piercing, or damaging the robot intentionally. Such actions will void the warranty.
- Use only HIPPOBOT power adapter for the charging.
- Do not use HIPPOBOT power adapter for charging other devices.
- Do not modify, repair, or service the HIPPOBOT through unauthorized third parties. Doing so may void the warranty.
- If the supply cord is damaged, contact HIPPOBOT Support immediately. Avoid attempting to repair the robot independently.
- Ensure the charging port is dry and the robot is powered off before charging with the Type-C adapter.

- Charge the robot in a cool, dry place, and do not cover it during charging to prevent overheating.

1.1.3 CAUTIONS FOR USE

- When placing the robot in the pool, ensure it is positioned right-side up.
- Components such as brushes and the Water Environment Monitor may need periodic replacement due to natural wear and tear.
- Keep the solar panel away from sharp or heavy objects to avoid surface damage. Do not clean it with a pressure washer.
- Please remove the robot from the pool during adverse weather conditions like heavy rain, strong winds, or thunderstorms to avoid potential damage.
- This product is not designed for freezing water conditions, please store the robot in a cool, dry place during the off-season.

1.2 FCC STATEMENT

ROBOT : FCC WARNING

This device complies with part 15 of the FCC Rules. Operation is subject to the following two conditions: (1) this device may not cause harmful interference, and (2) this device must accept any interference received, including interference that may cause undesired operation.

Any changes or modifications not expressly approved by the party responsible for compliance.

Could void the user's authority to operate the equipment.

NOTE: This equipment has been tested and found to comply with the limits for a Class B digital device, pursuant to Part 15 of the FCC Rules. These limits are designed to provide reasonable protection against harmful interference in a residential installation.

This equipment generates, uses and can radiate radio frequency energy and, if not installed and used in accordance with the instructions, may cause harmful interference to radio communications. However, there is no guarantee that interference will not occur in a particular installation. If this equipment does cause harmful interference to radio or television reception, which can be determined by turning the equipment off and on, the user is encouraged to try to correct the interference by one or more of the following measures:

- Reorient or relocate the receiving antenna.
 - Increase the separation between the equipment and receiver.
 - Connect the equipment into an outlet on a circuit different from that to which the receiver is connected.
 - Consult the dealer or an experienced radio/TV technician for help.
- To maintain compliance with FCC's RF Exposure guidelines, This equipment should be installed and operated with minimum distance between 20cm the radiator your body: Use only the supplied antenna.

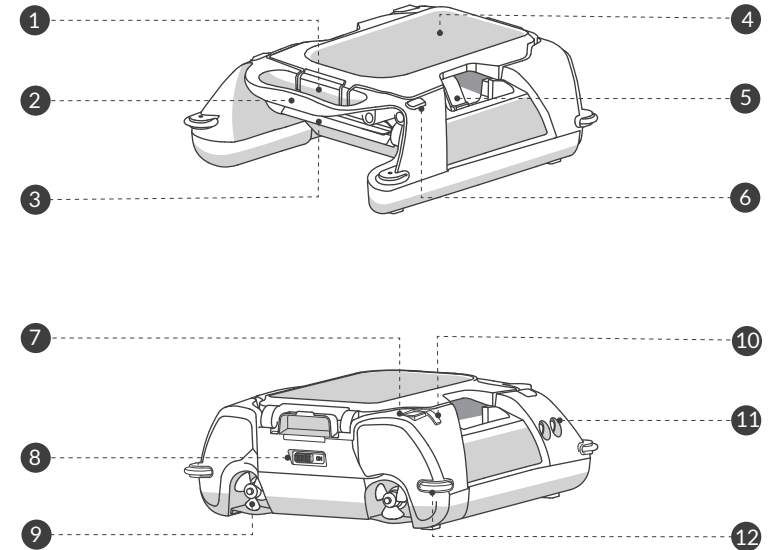
1.3 MPE REQUIREMENTS

To satisfy FCC/IC RF exposure requirements, a separation distance of 20cm or more should be maintained between the antenna of this device and persons during device operation. To ensure compliance, operation closer than this distance is not recommended.

Under normal use conditions, this equipment should be kept a separation distance of at least 20cm between the antenna and the body of the user.

2 PRODUCT DETAILS

2.1 PRODUCT STRUCTURE



- | | |
|-----------------------|-------------------------------|
| ① Buckle | ⑦ Digital Display Screen |
| ② Handle | ⑧ Power Switch |
| ③ Roller Brush | ⑨ Propeller x 2 |
| ④ Solar Panel | ⑩ Type-C Charging Port |
| ⑤ Debris Basket | ⑪ Ultrasonic Radar Sensor x 6 |
| ⑥ Indicator Light x 2 | ⑫ Side Wheel x 4 |

The diagram is for reference only. Please refer to the actual product for accuracy.

2.2 PRODUCT SPECIFICATIONS

Model	H1
Battery Capacity	4000mAh/11.1V (44.4Wh)
Battery Life	Up to 18 hours
Charging Input	100V-240V,60Hz /50Hz
Charging Output	15V/2.0A
Charging Time	2 Hours
IP Grade	IPX7 Waterproof IP68
Working Temperature	-58~158°F(-50~70°C)
Ideal Pool	In-ground pool
Ideal Temperature	50-105°F/10-40°C
Idea Water depth	≥ 6 in / 15 cm
pH Value	7.0-7.8
Chlorine	Maximum 4 ppm
Salt	Maximum 6500 ppm

2.3 ACCESSORIES INCLUDED

NO	Name	Model	QTY(pc)
1	Skimmer	HIPPOBOT H1	1
2	Charger	/	1
3	User Manual	/	1
4	Debris Collection Basket	/	1
5	Remote Control	/	1
6	AAA Batteries	/	1

2.4 INDICATOR LIGHT DEFINITION

Indicator status while the robot is operating.

Indicator Status	Mode	Meaning
Breathing Green Light - Fast	Auto Mode	The Robot is in High Performance Mode
Breathing Green Light - Mild	Auto Mode	The Robot is in Long battery life Mode
Flashing 3-times Green Light - Fast	Random Mode	The Robot is in random Mode
Flashing 3-times Green Light - Mild	Random Mode	The Robot is in random Mode
Breathing Green Light - Fast	Manual Mode	The Robot is running at fast speed
Breathing Green Light - Mild	Manual Mode	The Robot is running at medium speed
Breathing Green Light - Slow	Manual Mode	The Robot is running at low speed
Flashing Yellow Light	/	The Robot is paused
Breathing Red Light	/	The Robot has encountered an issue
Off	/	The Robot is powered off

Indicator status related to battery & charging.

Indicator Status	Meaning
Breathing Red Light	The battery has been charged to 0-50%
Breathing Green Light	The battery has been charged to 51-99%
Solid Green Light	The battery is fully charged
Flashing Red Light	Low battery warning

3 BEFORE USE

3.1 PAIR THE REMOTE CONTROL

After completing the charging process:

- Make sure the HIPPOBOT remained powered on.
- Press any random button on the remote and wait for 4-5 seconds for the pairing process to complete.
- Once paired, the HIPPOBOT is ready to be controlled using the remote.

NOTICE: The remote is not waterproof. Ensure it is stored indoors after use to avoid damage.

3.2 CAUTIONS BEFORE USE

- Ensure the debris basket is securely installed to prevent operational issues.
- Check that the battery is fully charged before use for optimal performance.
- Clean the solar panel to ensure efficient charging and functionality.
- Place the robot right-side up when putting it into the pool.
- Remove any objects such as towels or toys from the pool that could obstruct the robot's movement.
- Ensure the pool is completely clear of people and pets during cleaning for safety.
- Supervise children at all times during cleaning. Do not allow them to ride or play with the robot, as this could result in injury or damage to the devices.

4 OPERATING INSTRUCTION

4.1 EDGE CLEANING MODE

In this Mode, the robot utilizes advanced ultrasonic radar sensors to detect and follow the pool wall in a counterclockwise direction. This continues until the battery level drops below 10%. If the battery falls below 10% and sunlight is insufficient for charging, the robot

automatically switches to Long Battery Life Mode, locates the nearest wall, and parks there. It will stay parked until it is fully charged by solar power or manually charged.

4.2 AUTO CLEANING MODE

In Auto Mode, the robot will start with Edge Cleaning for 10 minutes. After that, it will transition to automatic forward cleaning. If the battery level falls below 10% and the sunlight is insufficient for charging, the robot will switch to Long Battery Life Mode, locate a wall, and park there. It will remain parked until it is either fully charged by solar power or manually recharged by the user.

When the power button on the back is switched on without selecting a mode on the remote, the robot will automatically enter Auto Mode.

4.3 HIGH PERFORMANCE & LOW BATTERY LIFE MODE

The user can select these two modes in both Edge Cleaning Mode and Auto Cleaning Mode.

- High Performance Mode: In High Performance Mode, the robot operates at maximum speed while in Auto Cleaning Mode, delivering a powerful and efficient cleaning. Activate it by pressing the '+' button on the remote.
- Low Battery Life Mode: In this mode (shown as the 'Endurance' button in the app), the robot reduces speed to extend operation time. Activate it by pressing the '-' button on the remote.

4.4 MANUAL REMOTE MODE

- The Manual Remote Mode has 3 speed levels. Activate it by pressing the 'hand' button on the remote.
- When a movement command is given while the robot is operating in another mode, without a further command, it will immediately switch back to the original mode it was running.
- If the user entered the Manual Remote Mode by pressing the 'hand' button on remote, the robot will remain in that mode and stay stationary without further movement until a new command is given.

Tips: For the best control experience, please stay within 50ft(15m) of the robot.

4.5 RESTORE FACTORY SETTING

To restore the robot its factory setting, press and hold the power button on the remote for 15 seconds. Once the reset is complete, the indicator will flash red five times and then turn green.

5 CHARGING

The HIPPOBOT skimmer robot is a hybrid robot, but solar and type-c charging can not charging at same time.

5.1 SOLAR CHARGING

The solar panel will automatically charge under the sunlight, no matter what weather it is.

- Shadows will affect robot's charging efficiency, ensure there is no trees or buildings blocking the sunlight while its charging.
- Cloudy days will need more time for robot to get fully charged.
- Please do not cover or put any items on the solar panel.

5.2 TYPE-C CHARGING

- Please check if the charging port is perfectly dry, if not, please clean the charging port first.
- Please do not cover any items on the robot while is charging to prevent overheating.
- Please make sure the charger is away from electricity and water to avoid accident.
- Use only HIPPOBOT power adapter for the charging.

5.3 CHARGING DURING AUTUMN AND WINTER

During the cold seasons, daylight hours are shorter and the solar power is weaker. The charging time and charging input will be worse than in the summer. Please understand the robot might work a shorter period than in the summer.

Recommend:

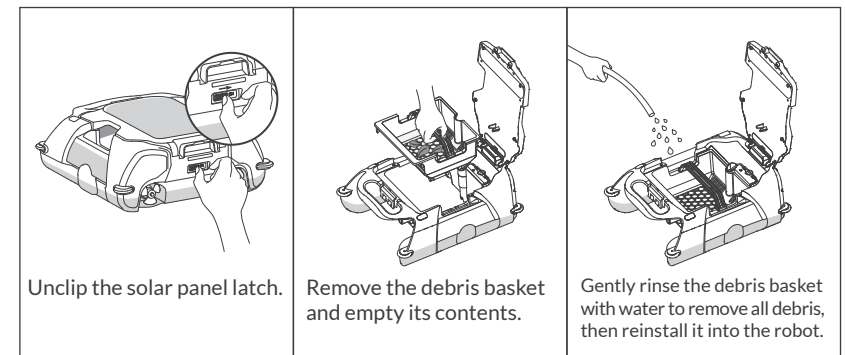
- When the temperature is too cold (lower than 50°F(10°C), please take the robot out of the pool and put it directly under the sunlight to charge.
- Use Type-C charger to charger the HIPPOBOT robot.

6 MAINTENANCE, REPLACEMENT AND STORAGE

Make sure to power off the robot before maintenance every time.

6.1 DEBRIS BASKET

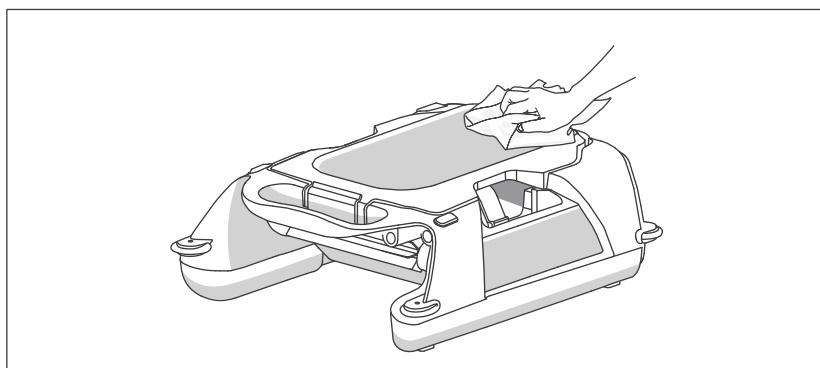
Clean the debris basket every 2-3 days to maintain optimal cleaning performance and ensure a clean pool environment.



6.2 SOLAR PANEL

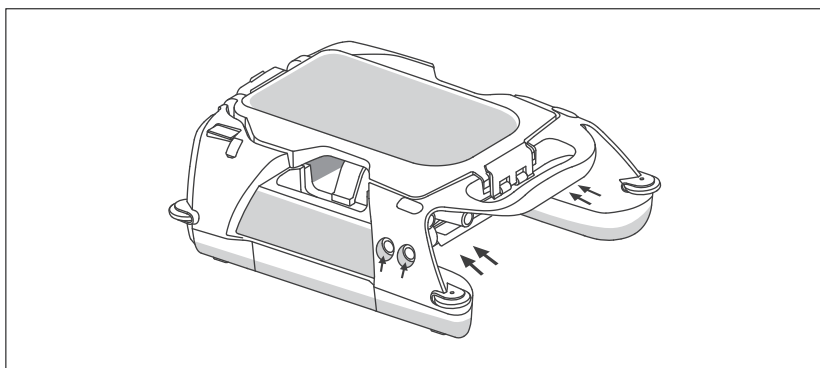
The solar panel is a fragile component. Please use a dry, soft, and clean towel to gently clean it.

- Do not use a high-pressure washer to clean the solar panel.
- Avoid using sharp tools that may damage the solar panel.



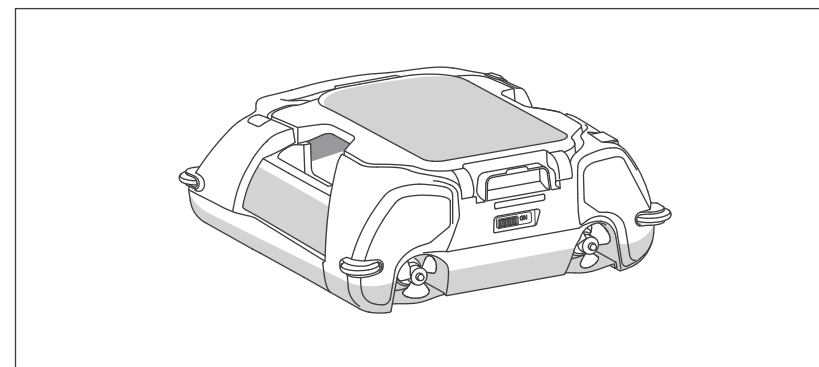
6.3 ULTRASONIC SENSOR

Wipe the sensors with dry, soft, and clean towel. Ensure there is no debris blocking the sensors to maintain optimal performance.



6.4 PROPELLER

Ensure that no debris is wrapped around the propellers and that no large items are blocking the movement of the propellers.



6.5 STORAGE

- In the non-swim seasons, please remove the robot from the pool.
- Before storing the robot, please fully charge the robot first.
- Please storage the robot in a place with dry and moderate temperatures, away from freezing or excessive heat.
- Please make sure the robot is powered off before storage.
- To maintain good battery health, please charge the robot with the Type-C adapter once every two months.

7 WARRANTY AND AFTER-SALES

7.1 WARRANTY

7.1.1 STANDARD WARRANTY COVERAGE

The HIPPOBOT comes with a 12-month warranty that covers the motors and battery from the date of purchase. This warranty applies to manufacturing defects and ensures peace of mind for customers.

7.1.2 EXCLUSIONS AND LIMITATIONS

This warranty will be voided under the following conditions:

- The product has been altered, misused, or repaired by unauthorized parties.
- Damage caused by improper storage, such as exposure to the freezing or extreme heat.
- Environmental factors like lightning strikes, floods, or prolonged submersion beyond designed water resistance.
- Accidental damage caused by the owner, such as dropping the product or using it for purposes other than its intended use.

7.1.3 CLAIM REQUIREMENTS

To make a warranty claim, please provide the following:

- A valid order number or proof of purchase.
- The product's serial number(SN) that match the system record.
- Photo or videos clearly showing the defect for faster solution.

7.1.4 SERVICE AND REPLACEMENT TERM

- Repair fees or replacements covered under warranty are free of charge.
- If the product cannot be repaired, a replacement will be provided.
- Replaced parts or devices under warranty will carry the remaining warranty period of original product.

7.1.5 OUT-OF-WARRANTY REPAIRS

For repairs or replacements outside the warranty period, contact our Service Department for an estimate. Costs for diagnostics, repairs, replacements, or shipping will be responsibility of the customer.

7.1.6 EXTENDED WARRANTY OPTION

Customers may choose to extend the warranty for an additional fee. This extension provides:

- Coverage for an extra 6 or 12 months on the motors and battery.
- Priority service for repair or replacement claims.
- Details on how to purchase extended coverage are available on our website or through customer service.

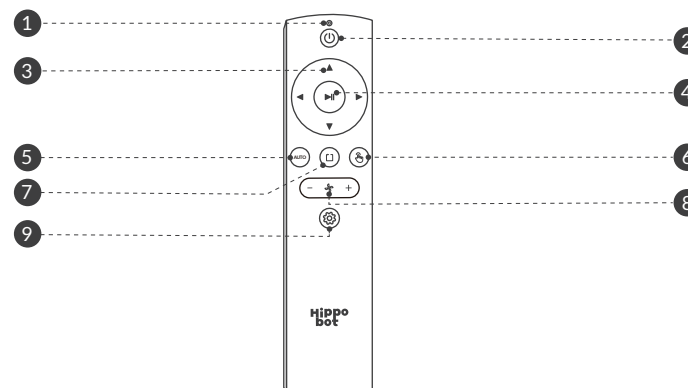
7.1.7 DISCLAIMER

Attempting to repair the product independently will void the warranty. For any issues or questions, always contact the Service Department first.

7.2 AFTER-SALES ISSUES

If any warranty or product-related concerns, check the FAQ section first. If the issue persists, contact our Service Department using the details below.

HIPPOBOT REMOTE CONTROL INSTRUCTION MANUAL



- ❶ Indicator Light: A flashing red light indicates Bluetooth pairing.
- ❷ Power On/Off: Click once to turn on or enter sleep mode.
- ❸ Direction Buttons: Press and hold to manually control HIPPOBOT's movement.
- ❹ Start/Pause: Click once to start or pause HIPPOBOT.
- ❺ Auto Cleaning Mode: Click once to activate auto cleaning mode.
- ❻ Edge Cleaning Mode: Click once to activate edge cleaning mode.
- ❼ Manual Mode: Click once to activate manual cleaning mode.
- ❽ Speed Adjustment: Click once to adjust HIPPOBOT's operating speed.
- ❾ APP Pairing Button: Click once to enter APP pairing mode.

Note: The H1 version does not support APP functionality.

USAGE PRECAUTIONS

- (1) HIPPOBOT is a Bluetooth-enabled remote control. When starting for the first time or after a long period of inactivity, the remote control will enter Bluetooth pairing mode. During this process, the indicator light will flash red. The remote control cannot be used until pairing is complete, which takes approximately 3-8 seconds.
- (2) HIPPOBOT supports only two AAA 1.5V batteries. Do not mix new and old batteries or use different types of batteries together. Avoid dropping the remote control, and ensure that no liquids enter the device.
- (3) Remove the batteries if the remote control will not be used for an extended period.
- (4) The Bluetooth connection of the HIPPOBOT remote control has an effective range of up to 15 meters. Avoid using the device in environments with obstacles, as this may cause connection issues.

- (5) When the remote control becomes unresponsive or when using a newly purchased remote control, press and hold the "[Button Icon]" + "[Button Icon]" simultaneously until the remote control's LED indicator stops flashing and stays steadily lit.

SPECIFICATIONS

- Model: 3.28.0A123
- Size: 155mm x 38.4mm x 13.5mm
- Material: ABS
- Battery Specification: Two AAA batteries

REMOTE CONTROL : FCC CAUTION :

This device complies with part 15 of the FCC Rules. Operation is subject to the following two conditions: (1) This device may not cause harmful interference, and (2) this device must accept any interference received, including interference that may cause undesired operation.

Any Changes or modifications not expressly approved by the party responsible for compliance could void the user's authority to operate the equipment.

Note: This equipment has been tested and found to comply with the limits for a Class B digital device, pursuant to part 15 of the FCC Rules. These limits are designed to provide reasonable protection against harmful interference in a residential installation. This equipment generates uses and can radiate radio frequency energy and, if not installed and used in accordance with the instructions, may cause harmful interference to radio communications. However, there is no guarantee that interference will not occur in a particular installation. If this equipment does cause harmful interference to radio or television reception, which can be determined by turning the equipment off and on, the user is encouraged to try to correct the interference by one or more of the following measures:

- Reorient or relocate the receiving antenna.
- Increase the separation between the equipment and receiver.

SERVICE CARD

NAME: _____ E-MAIL: _____

ADD: _____

ORDER NVMBER: _____ ORDER DATE: _____

SN NUMBER: _____ OPDER PLATFORM: _____

WARRANTY : 12 MONTHS

SCAN THE QR CODE AND FILL THE SERVICE SHEET
ONLINE, OR VISIT HIPPBOT OFFICIAL WEBSITE FOR
FURTHER HELP.



SCAN ME

- Connect the equipment into an outlet on a circuit different from that to which the receiver is connected.
 - Consult the dealer or an experienced radio/TV technician for help.
- The device has been evaluated to meet general RF exposure requirement.
The device can be used in portable exposure condition without restriction.