

SpinDisplay

USER MANUAL

**Please read this user manual carefully
before using the device.**

Precautions

Thank you for choosing to use this product, in order for you to have a better experience in the use of the process, we recommend that you read this manual carefully before use, and strictly in accordance with the operation of this manual, if there is a conflict between the manual and the actual operation, the actual operation of the main!

- (1) Before powering on the machine, please check **whether the LED light board is locked** and free of obstacles; **whether the base of the machine is stable**; **whether the host is installed in place. Confirm the safety before turning on the machine!**
- (2) This product is an electronic product, pay attention to waterproof and dust-proof, need regular maintenance.
- (3) Avoid products in high temperature, humid environment, and rainy day outdoor use.
- (4) When the machine is working, the LED light board will rotate at high speed, it is recommended to hang a **“no touching”** warning, or recommended to match the use of protective cover.

If you have any questions, please do not hesitate to contact us. We wish you a happy use!

Equipment List

Items	Main Unit	LED Strip	Power Adapter	Power Cord	Remote Control	Mounting Fixing Bracket	Screw Pack	Manual
Quantity	1	4	1	1	1	1	1	1

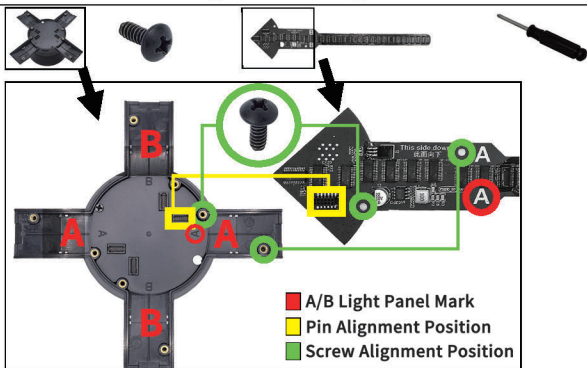
Product Specs

Product Model	X4	X5	X6	F52	F56	F60	F65	F70	F80	F85	F100	H65	H75
Display Diameter	45cm	49cm	55cm	52cm	56cm	60cm	64cm	70cm	78cm	85cm	99cm	64cm	72.5cm
Number of lamp beads	512pcs	560pcs	624pcs	624pcs	672pcs	720pcs	768pcs	832pcs	928pcs	1024pcs	1184pcs	1024pcs	1184pcs
Input Voltage	AC100-240V 50/60Hz DC24V												
Supported formats	video and image formats such as MP4, AVI, RMVB, JPG, etc.												
Methods for content replacement				mobile app + PC software			Scheduled playback			support			
System security				users can perform secondary encryption			Remote OTA upgrade			support			
Real-time screen casting				support			Bluetooth audio output			support			
Remote control				support			SD card content copying			support			

Installation Instructions for X Series Products

Main Unit *1 Screws *6 Light Panel A *2 + Light Panel B *2 Screwdriver *1

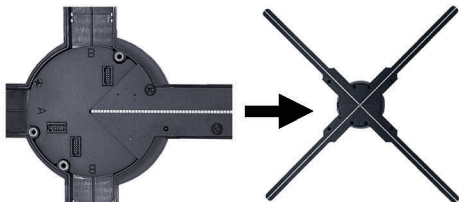
【ACC.】



【Installation Effect】

Note:

It is recommended to install the screws after all four light panels are installed.



【Installation Steps】

1. The red marked positions are located on the front of the main unit and the back of the led strip (A corresponds to A, B corresponds to B) for installing the led strip
2. Align the yellow marked pins and gently press down to install the light panels.
3. After all four light panels are installed, install and tighten the screws at the green marked screw hole positions.
4. When powered on, all four light panels will light up in a running light pattern. By default, the device will not rotate when powered on; it needs to be controlled via the remote control or by connecting to the app.
(You can also set it in the app to rotate immediately upon powering on.)

Installation Instructions for F/H Series Products

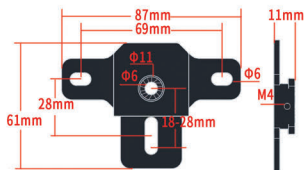


1. Main unit and LED strip, **A corresponds to A, B corresponds to B** [1]
2. Install the LED strip by pressing down both safety buckles on the sides of the main unit's light arm simultaneously. [2]
3. Then, after inserting the corresponding A or B light panel into the light arm, check whether the safety buckle has fully popped up and locked in place. [3] **Warning: If not locked, the LED strip may be ejected.**
4. When powered on, all four light panels will light up in a running light pattern. By default, the device does not rotate when powered on; it must be controlled via the remote control or by connecting to the app. (You can also set it in the app to rotate immediately upon powering on.)

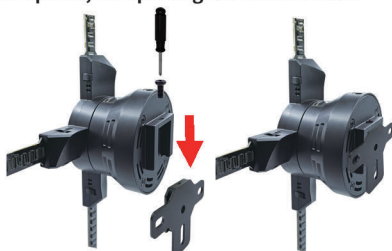
Installation Instructions for Fixed Bracket

1. Choose the installation location and first install the fixed base.
2. After installing the LED strip, hang the main unit on the fixed bracket and tighten one screw to lock it in place, completing the installation.

As shown in the picture below:



Fixed bracket size



Before Installation

After Installation

Mobile App Usage Instructions

1. Connect the power; all four light strips will light up, running in a lantern-like pattern. By default, the device does not rotate when powered on and is controlled via the remote control or by connecting to the app. Please scan the code to download the app (You can also search for "SpinDisplay" in the App Store on your iPhone to download) .



2. Launch the app (as shown in Figure 1): For first-time use, **(Be sure to allow permissions on your phone)** keep your phone connected to the internet to ensure the app can update to the latest version. Open the app and click on the "Design" window. When the 3D text sphere appears, it indicates that the app has been updated to the latest version (as shown in Figure 2). (The following example uses Android; the iOS method is the same.)



Figure 1

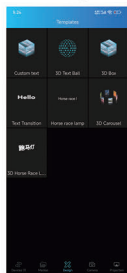


Figure 2



Figure 3

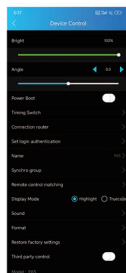


Figure 4

3. Connect the device: Click on "Add Device," and the list will display nearby connectable Wi-Fi hotspots. Select F65-XXXXXXX; F65 indicates the device model, and the size will vary (for example, the size 80 is F80-XXXXXXX). The last eight digits represent the device ID. **The Wi-Fi password is 12345678.** Once connected successfully, return to the app interface (as shown in Figure 3). The lower left corner will display (1) to indicate that one device is connected.

Note: If the device is still not connected after returning to the app interface, please close the app and restart it.

4. After a successful connection, swipe left on the material in the playlist to modify the file name, set timers for playback, and perform other related operations. Click the "+" icon in the upper right corner to add your own images, videos, and other content. Clicking on "Settings" allows you to modify power-on startup, set timers for turning on and off, and other operations (as shown in Figure 4)

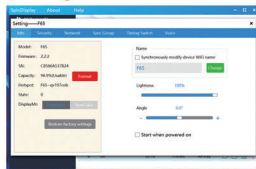
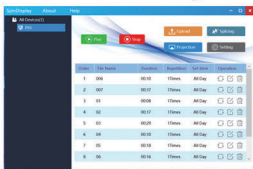
5. After creating and saving the material in "Design," return to the main interface, click the "+" icon in the upper right corner, and select "Local" to upload the display material you just created.

6. Bluetooth speaker connection: The device's Bluetooth function is off by default. After connecting to the device, go to Settings - Sound, turn on the audio Bluetooth switch to activate Bluetooth. Once activated, please turn on the Bluetooth speaker, and the device will automatically search for connectable Bluetooth speakers. During use, when you upload content, the audio Bluetooth will automatically disconnect, and it will reconnect once the upload is complete.

7. When using materials from the cloud media library, your phone must be connected to the internet to browse and download. You need to save them locally first, and then connect the phone to the device to upload and use them.

Usage Methods for PC and Splicing

2. After installing the software, click the computer's Wi-Fi connection feature to connect to the device. The device name and password are the same as those in the app. Once connected successfully, it will look like the image below.

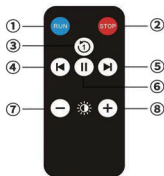


3. Click the "Upload" button to add your own images/videos. Click on Settings to modify the device name, connect to the router, and configure multiple connections.

4. Some models support splicing. For the splicing and debugging methods for multiple devices, please contact your sales representative or local dealer.

Remote Control User Instructions

- ① Power On
- ② Power Off
- ③ Loop Current Display Material
- ④ Play Previous Material
- ⑤ Play Next Material
- ⑥ Pause
- ⑦ Decrease Brightness
- ⑧ Increase Brightness



Common Issues and Maintenance

LED Indicator Meanings During Standby:

※Red: SD card not inserted or damaged, LED panel not fully installed, or system error.

※Green: No playable media files on the card.

※Blue: Real-time clock or network synchronization not functioning.

1. Device Won't Turn On After Powering Up, No Display

◆Check if the power supply is functioning properly; you can determine this by checking if the LED panel lights up normally after powering on.

2. Incomplete Display or Entire Row Not Lit After Device Starts

◆Remove the LED strip and inspect the gold contact points for any debris or dirt.

3. Black Circles Appear on Screen After Device Runs for a While

◆Dust and stains may accumulate on the surface of the LEDs during operation. Use a soft, dry cloth or a small brush to clean the surface. Regular dust cleaning is recommended to achieve optimal display quality.

Do not use volatile organic solvents for cleaning.

Product After-Sales Service

This product has passed our company's rigorous quality inspection.

Under normal usage conditions, within the warranty period, we will provide repair or adjustment services for faults caused by the product's quality according to the following terms:

1. This product is under warranty for one year from the date of purchase, excluding human-caused issues, and is maintained for life.

2. During the warranty period, any faults caused by technical reasons will be covered by our free repair service.

3. The following situations are not covered by the free warranty:

(1) Products that have been disassembled or repaired without the company's consent.

(2) Damage caused by human actions, external forces, or other natural disasters.

4. Our warranty liability is limited to the repair of faults during the warranty period and does not cover other liabilities.

FCC Warning:

This equipment has been tested and found to comply with the limits for a Class B digital device, pursuant to part 15 of the FCC Rules. These limits are designed to provide reasonable protection against harmful interference in a residential installation. This equipment generates, uses and can radiate radio frequency energy and, if not installed and used in accordance with the instructions, may cause harmful interference to radio communications. However, there is no guarantee that interference will not occur in a particular installation. If this equipment does cause harmful interference to radio or television reception, which can be determined by turning the equipment off and on, the user is encouraged to try to correct the interference by one or more of the following measures:

- Reorient or relocate the receiving antenna.
- Increase the separation between the equipment and receiver.
- Connect the equipment into an outlet on a circuit different from that to which the receiver is connected.
- Consult the dealer or an experienced radio/TV technician for help.

Caution: Any changes or modifications to this device not explicitly approved by manufacturer could void your authority to operate this equipment.

This device complies with part 15 of the FCC Rules. Operation is subject to the following two conditions:

(1) This device may not cause harmful interference, and (2) this device must accept any interference received, including interference that may cause undesired operation.

This equipment complies with FCC radiation exposure limits set forth for an uncontrolled environment. This equipment should be installed and operated with minimum distance 20cm between the radiator and your body.