

Fan lamp installation instruction manual

Thank you for buying and using our products!

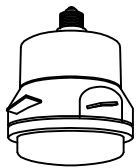


In order to ensure safe use, please entrust professional personnel to install, check boards and repair.

No.1 matters need attention

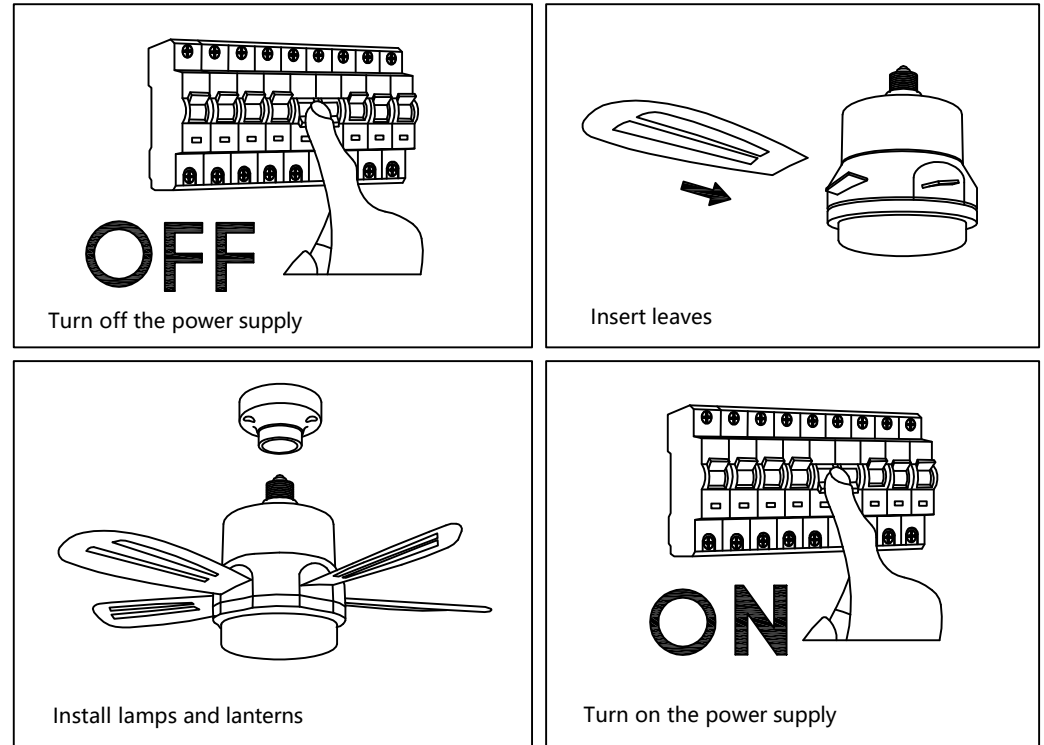
1. The input current of this product is AC current of 85-220V / 60Hz.
2. If you lack the knowledge of electrical appliances, be sure to ask a qualified professional electrician to install them for you.
3. In order to ensure safety, the height of the fan blade from the ground should be greater than 230cm.
4. Before installation, please turn off the power supply. The installation must be installed in order of ground wire / fire wire / zero line, and the disassembly must be installed in order of zero line / fire wire / ground wire to avoid electric shock.
5. When installing, the screws of each part shall be locked.
6. When the fan is rotating, not any object should touch the blade to avoid danger.
7. For daily cleaning, you can use a damp cloth to wipe the surface without using chemicals.
8. The fan blades can also be disassembled directly, convenient for cleaning and corrosive chemicals.
9. In case of any accident, disconnect the power first, then ask an electrician to storage check and fix it.

Model	LED Fan Light	
Input Voltage	85-265V~50/60Hz	
Wattage	Ø400	25W
CCT	3000K-6500K	
Wind speed	Soft wind / Medium speed wind / Strong wind	
Control Mode	Remote Control / Wall Switch	

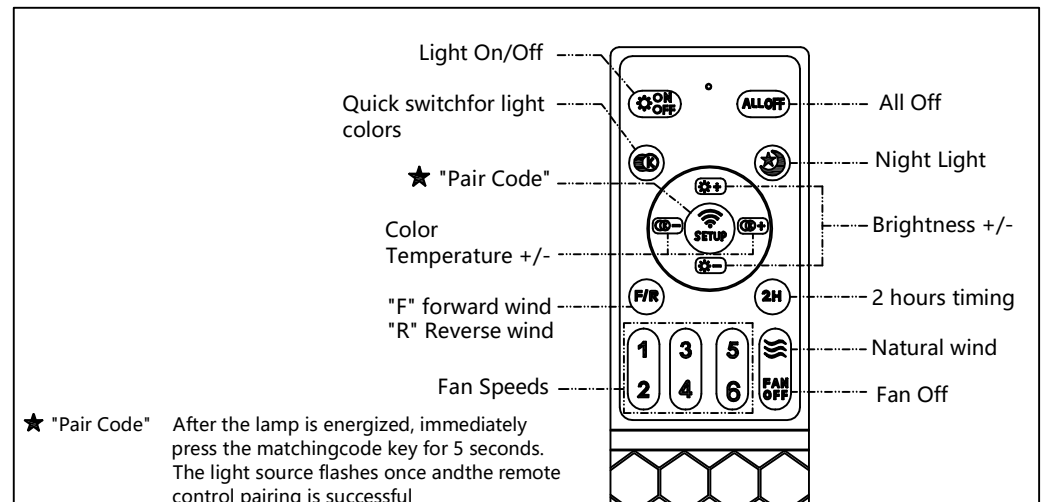
No.2: Packing List

 X1 Motor main body	 X5 petal	 X1 remote control
--	--	---

No.3: Installation



No.4: Remote control instructions



FCC WARNING

This device complies with part 15 of the FCC Rules. Operation is subject to the following two conditions: (1) This device may not cause harmful interference, and (2) this device must accept any interference received, including interference that may cause undesired operation.

Note: This equipment has been tested and found to comply with the limits for a Class B digital device, pursuant to part 15 of the FCC Rules. These limits are designed to provide reasonable protection against harmful interference in a residential installation. This equipment generates, uses and can radiate radio frequency energy and, if not installed and used in accordance with the instructions, may cause harmful interference to radio communications. However, there is no guarantee that interference will not occur in a particular installation. If this equipment does cause harmful interference to radio or television reception, which can be determined by turning the equipment off and on, the user is encouraged to try to correct the interference by one or more of the following measures:

- Reorient or relocate the receiving antenna.
- Increase the separation between the equipment and receiver.
- Connect the equipment into an outlet on a circuit different from that to which the receiver is connected.
- Consult the dealer or an experienced radio/TV technician for help.

Note: The Grantee is not responsible for any changes or modifications not expressly approved by the party responsible for compliance. such modifications could void the user's authority to operate the equipment.

The device has been evaluated to meet general RF exposure requirement.

This equipment complies with FCC's RF radiation exposure limits set forth for an uncontrolled environment. This device and its antenna(s) must not be co-located or conjunction with any other antenna or transmitter.