

User Manual



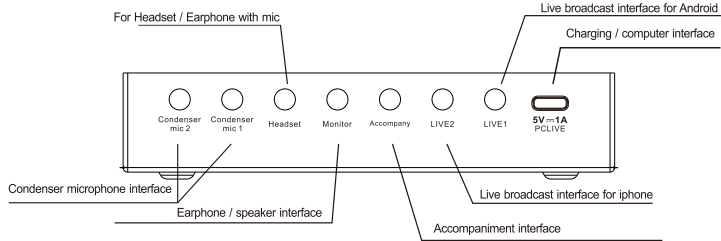
Please read the instruction carefully before use to avoid problems caused by improper operation. If you have any questions please feel free to contact us.

Control Panel Introduction:

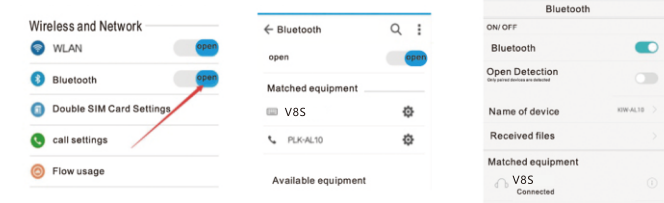
- 1.Power:** Press for about 3 seconds to turn ON/OFF
- 2.TREBLE:** Treble volume adjustment
- 3.Bass:** Bass volume adjustment
- 4.Accompany:** Adjust the volume and the accompaniment indicator will change accordingly
- 5.Record:** Recording volume adjustment
- 6.Monitor:** Monitor earphone volume adjustment
- 7.MIC VOL:** Microphone volume adjustment
- 8.ECHO:** Echo volume adjustment
- 9.Guiding Lights:** Display different lights according to debugging
- 10.Primal sound:** Original voice of the host
- 11.Voice Over:** The accompaniment music volume will automatically become lower when the host speaks. And when the host does not speak, the accompaniment music will return to normal.

- 12.Eliminate:** To remove the original singing sound of a song.
- 13.Electronic music:** Repeat this key to switch to a different tone
- 14.Internal play:** To prevent echo in live streaming. For example, you can't hear each other when playing games. When "Internal play" is on, and the voice of your teammates will not be heard during the game. In the live broadcast, if heard in the livebroadcast room. "Internal play" is on, the sound in your computer will not be
- 15.Mute:** In mute mode, your voice can not be recorded by
- 16.EMC:** Scene mode, the indicator light indicates that it has the microphone.
- 17.PRO:** Scene mode, the indicator light indicates that it has the microphone.
- 18.POP:** Scene mode, the indicator light indicates that it has the microphone.
- 19.KTV:** Scene mode, the indicator light indicates that it has the microphone.
- 20.Inflexion:** Press this key repeatedly to switch to various tone changing modes
- 21.10 kinds of sound effects:** cheer, Din, 9277,KISS, Gunshot, yell, Laughter, PUBG, Awesome, dindin.

Interfaces Introduction:



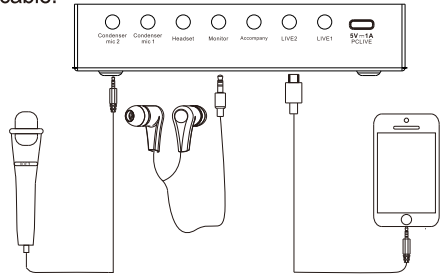
Bluetooth connection method



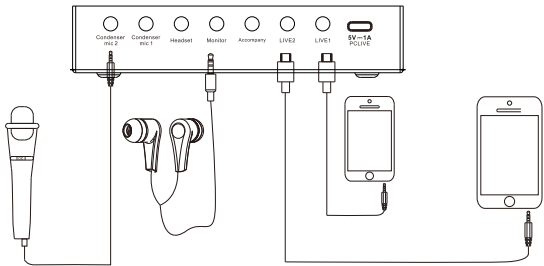
1. Turn on Bluetooth on mobile phone/tablet
2. After the Bluetooth device "V8S" is detected, click "V8S" to connect.
3. Please note that Bluetooth function only support connected devices as accompaniment.

Single Mobile Phone Live Broadcast Connection Method

If your phone/tablet do not have a 3.5mm audio jack, please use an audio adapter cable.

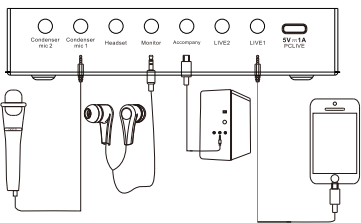


Dual Mobile Phone Live Broadcast Connection Method



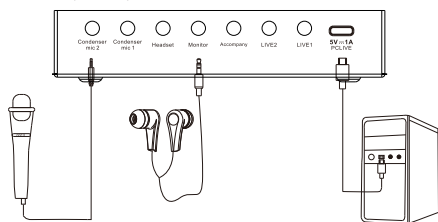
Mobile Live/Computer Accompaniment Connection Method

The accompaniment computer can be connected in 2 ways: One way is to connect the charging port of the sound card through the charging cable;The other way is to connect the backing track interface of the sound card through the accompaniment cable.

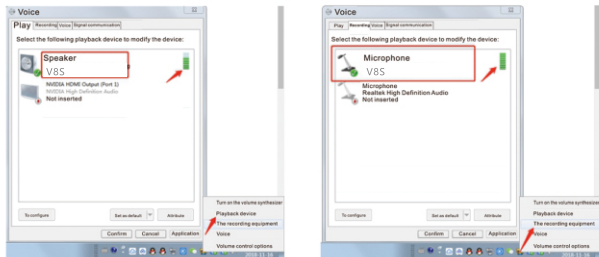


Computer Live/Accompaniment Connection Method

1. To live broadcast on a computer/laptop, you need to connect the charging port of the sound card through the charging cable.
2. The computer will automatically identify and install the sound card driver.



Computer accompaniment and computer live debugging diagram



To check if the sound card has been identified and installed by the computer:

1. Right-click the loudspeaker on the taskbar of the computer, open "Playback device ". If "V8S" is displayed and set as the default, it means the sound card has been recognized by the computer and installed successfully
2. Right-click the loudspeaker on the taskbar of the computer, open "Recording equipment ". If "V8S" is displayed and set as the default, it means the sound card microphone has been recognized by the computer and installed successfully.

Usage precautions and Frequently asked questions

- 1. Press the "POWER" button for 3 seconds to turn on or turn off the sound card.**
- 2. Charge the sound card before use.** Low volume or poor sound quality indicates that sound card power is insufficient. Please don't charge while using the sound card, because current will cause interference.
- 3. When using the sound card, all interfaces need to be fully plugged in.**If the mobile phone has a phone case, please remove the case to avoid the shell against the plug.
- 4. When using the computer/laptop for live broadcast or accompaniment, directly connect the computer USB interface and the sound card charging interface with the charging cable.**Don't use the live ports to connect a computer or laptop. The computer will automatically identify and install the sound card driver (there will be a display in the lower right corner of the computer). If the computer does not recognize the sound card driver, please check if the interface and cable connected is correct.

- 5. If you hear heavy sound or noise when use an iPhone to live broadcast, please try to turn off the volume of the phone.** You can adjust the volume from the sound mixer card.
- 6. The Bluetooth function can only support accompaniment devices with Bluetooth.**You can also use accompaniment cable to connect the accompaniment devices.
- 7. When listening to the live broadcast effect with a mobile phone, remember that the phone used for listening should not be too close to the live broadcast mobile phone.**There will be signal interference and howling.
- 8. Please turn down the volume of the microphone to reduce the noise sound.** If the sensitivity of the microphone is high, there might be a noise sound or harsh sound from the sound card.
- 9. It is not recommended to use an external speaker for computer live broadcasting.** because the sound from the speaker may be recorded by the microphone again, resulting in double tone. It is recommended to unplug the speaker and use headphones during live broadcasting on computer.

- 10. The "Monitor" interface is for earphone without mic, and the "Headset" interface is for earphone/headset with mic.** To make sure that you use the right port, please try both earphone/headphone port if there is noise sound or interference sound from one port.

Product parameters

Channel system: Dual channel	Output samples: 48KHZ
Sampling Resolution: 16bit	Battery capacity: 500mAH
Installation method: External	Multi-speaker mode: 2.0
Audio interface: 3.5mm interface	Charging: 5V/1A

Packing list

Sound card *1	Charging/Computer live cable *1
Recording cable * 1	Accompaniment cable *1
User manual *1	Adapter cables *3

CPZ.208V8STCE V8ST英文说明书/TYPEC款英文8页双面印刷/尺寸S=102x84mm

This device complies with part 15 of the FCC Rules. Operation is subject to the following two conditions: (1) this device may not cause harmful interference, and (2) this device must accept any interference received, including interference that may cause undesired operation.

Any changes or modifications not expressly approved by the party responsible for compliance could void the user's authority to operate the equipment.

NOTE: This equipment has been tested and found to comply with the limits for a Class B digital device, pursuant to Part 15 of the FCC Rules. These limits are designed to provide reasonable protection against harmful interference in a residential installation. This equipment generates, uses and can radiate radio frequency energy and, if not installed and used in accordance with the instructions, may cause harmful interference to radio communications. However, there is no guarantee that interference will not occur in a particular installation.

If this equipment does cause harmful interference to radio or television reception, which can be determined by turning the equipment off and on, the user is encouraged to try to correct the interference by one or more of the following measures:

- Reorient or relocate the receiving antenna.
- Increase the separation between the equipment and receiver.
- Connect the equipment into an outlet on a circuit different from that to which the receiver is connected.
- Consult the dealer or an experienced radio/TV technician for help.

The device has been evaluated to meet general RF exposure requirement. The device can be used in portable exposure condition without restriction.