

ON

OFF

AUTO

4H

6H

8H

TIMER OFF

SPEED -

SPEED +

ON

OFF

AUTO

R

G

B

W

WW

WW

WW

WW

FADE

JUMP

IN WAVES

STROBE

TWINKLE

METEOR

FANTASY

MAGIC

Pause

brightness and four-level speed can be set

First press: red, blue and white steady on

Second press: Color Swap

First press: Orange and purple are steady on. Second press: Orange, purple, and green are steady on.

First press:red and green steady on Second press: Color Swap

First press:red and white steady on Second press: Color Swap

First press: Easter macaron colors: macaron green, macaron blue, macaron yellow and macaron pink

First press: 7 Christmas colors: pink, red, blue, green, purple, yellow and orange

First press: Warm white

Second press:(red, green, yellow and blue)

After firmware upgrade Warm white and four colors (red, green, yellow and blue) alternately flash

Adds/removes dynamic effects from the current cast

The 128 functions include: star flashes; (3). 16 bright/dark flashing modes; 2+2+2+2+4+4; (5). 8 classic modes; (6). 8 extinguishing modes; in order, they are red, cyan, white, and multicolor; (7). 7 combination (blue-green), (red-blue), (red-white), (blue-white), (red-green-white), sequentially light up and darken; (8). 7 kinds of red, green, yellow, blue, purple, cyan, white, with alternating bright and dark flashing; (9). 7 kinds of red, green, yellow, blue, purple, cyan, white, with breathing flash; (10). 1 mode of red background with white burst flash; 8 modes of red, green, yellow, blue, purple, cyan, white, multicolor blinking flash. (11). 17 modes for Valentine's Day, Chinese New Year, and Easter: Random flashing of red and orange colors; Random flashing of red and pink colors; Random flashing of red and lime green colors; Random flashing of red and rose red colors; Random flashing of green and orange colors; Random flashing of green and lime green colors; Random flashing of green and pink colors; Random flashing of green and purple colors; Random flashing of blue and lime green colors; Random flashing of blue and pink colors; Random flashing of blue and violet colors; Random flashing of yellow and orange colors; Random flashing of yellow and violet colors; Random flashing of purple and orange colors; Random flashing of purple and pink colors; Random flashing of white and orange colors; Random flashing of white and pink colors; (12). Auto.

WARNING

● INGESTION HAZARD: This product contains a button cell or coin battery.

● DEATH or serious injury can occur if ingested.

● A swallowed button cell or coin battery can cause Internal Chemical Burns in as Little as 2 hours.

● KEEP new and used batteries OUT OF REACH OF CHILDREN

● Seek immediate medical attention if a battery is suspected to be swallowed or inserted inside any part of the body.

1. Download the APP

Download the "Surplife" app from the App Store and Google Play Store, or scan the QR code.

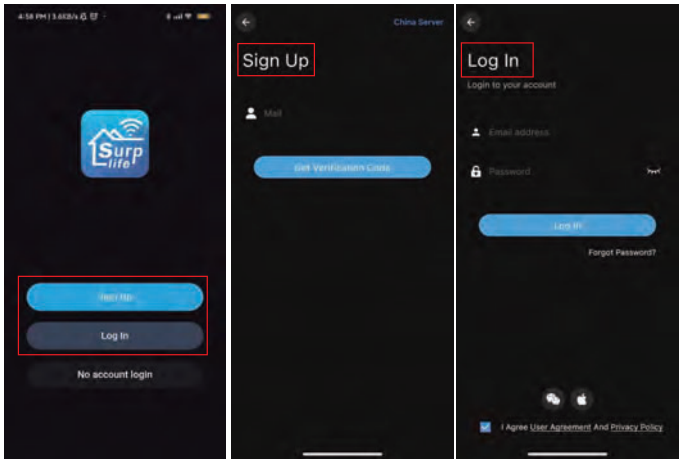


Surplife APP



2. How do I connect to Surplife App?

- 1) Register/login to your Surplife account.
- 2) You can log in as a visitor.



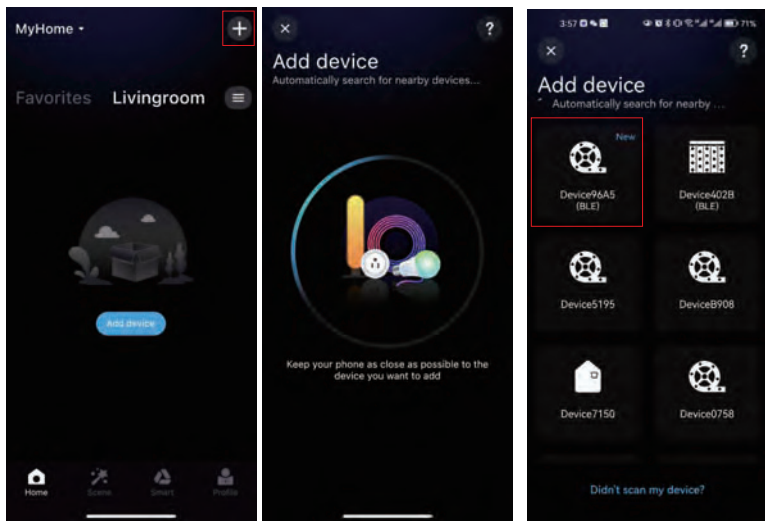
- 3) Turn on the device and enable the Bluetooth function of the phone.

210 mm

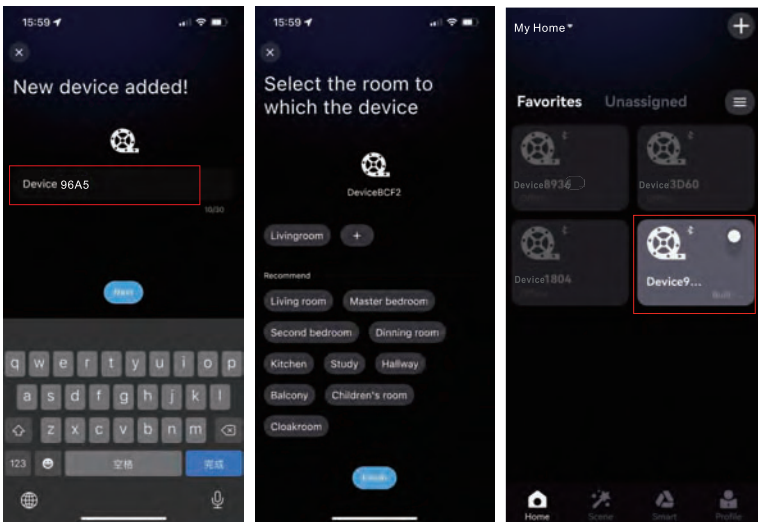
145 mm

210 mm

4) Enter the "surplife" app and click "Add Device" or "+" to add device.



5) Rename the device and select a room for it.



145 mm

System Requirement

If it is an app style, the minimum system requirements for the phone are ios 11 and Android 5. Please check the app store for the latest updates to ensure optimal performance.

Technical Specifications

Power supply: see label

IP protection: IP44

Premium grade LED diodes

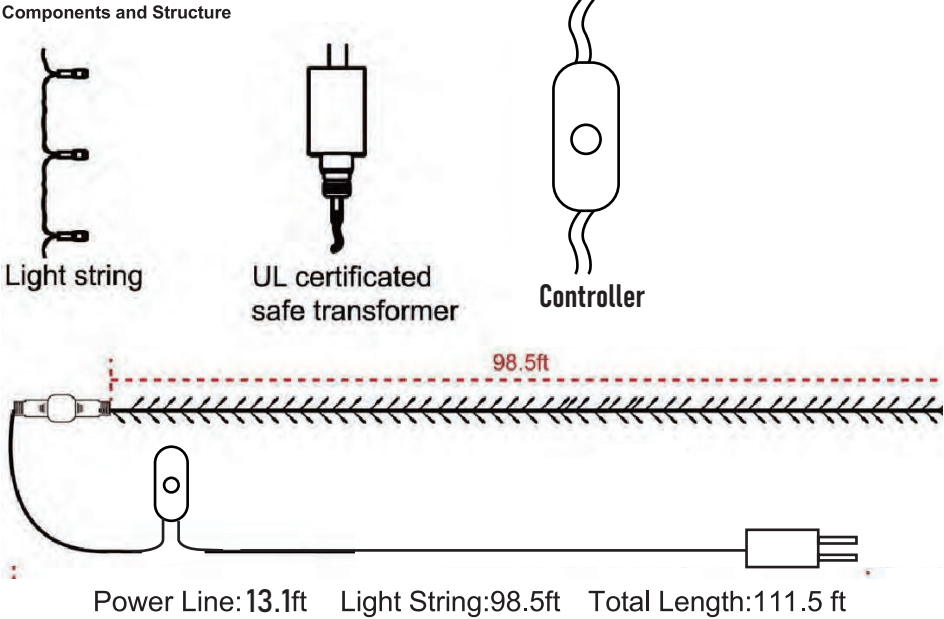
To ensure high color rendering, products only use high-quality leds.

RGB and RGB+W products are produced according to quality principles and processes that allow us to obtain a high degree of primary color purity.

The minimum excitation purity values of the Blue, Green and Red components are shown within the table below.

Operating RF for	/ Bluetooth	Color Purity values
Frequency:	2402/2480 Mhz	Blue >90%
		Green >65
Power <100mW		Red >95%

Components and Structure



NOTE

Please check if all parts connect well then plug into test all LED lights are ON or not. If all lights are in good condition, please hang the string lights in a place you want to hang.

The LED String Lights User Guide

Thank you for buying our String Lights. For a better experience, please install it according to the below instructions and keep it appropriately for future reference.

IMPORTANT SAFETY INSTRUCTIONS

When using electrical products, basic precautions should always be followed including the following:

1. READ AND FOLLOW ALL SAFETY INSTRUCTIONS.
2. Do not use seasonal products outdoors unless marked suitable for outdoor use. When products are used in outdoor applications, connect the product to a Ground Fault Circuit Interrupting (GFCI) outlet. If one is not provided, contact a qualified electrician for proper installation.
3. This seasonal use product is not intended for permanent installation or use.
4. Do not mount or place near gas or electric heaters, fireplace, candles or other similar sources of heat.
5. Do not secure the wiring of the product with staples or nails, or place on sharp hooks or nails.
6. Do not let lamps rest on the supply cord on any wire.
7. Unplug the product when leaving the house, when retiring for the night, or if left unattended.
8. This is an electric product, not a toy! To avoid risk of fire, burns, personal injury and electric shock it should not be played with or placed where small children can reach it.
9. Do not use this product for other than its intended use.
10. Do not hang ornaments or other objects from cord, wire, or light string.
11. Do not close doors or windows on the product or extension cords as this may damage the wire insulation.
12. Do not cover the product with cloth, paper or any material not part of the product when in use.
13. This product is equipped with push-in type lamps. Do not twist lamps.
14. Read and follow all instructions that are on the product or provided with the product.
15. Where breakage or damage to lamps occurs the chain must not be used/energised but disposed of safely.
16. The lamps are not replaceable.
17. SAVE THESE INSTRUCTIONS.

Instruction

1. Remove and immediately recycle or dispose of used batteries according to local regulations and keep away from children. Do NOT dispose of batteries in household trash or incinerate.
2. Even used batteries may cause severe injury or death.
3. Call a local poison control center for treatment information.
4. Battery type: CR2032.
5. Nominal battery voltage: 3V.
6. Non-chargeable batteries are not to be recharged.
7. Do not force discharge, recharge, disassemble, heat above (manufacturer's specified temperature rating) or incinerate. Doing so may result in injury due to venting, leakage or explosion resulting in chemical burns.
8. Ensure the batteries are installed correctly according to polarity (+ and -).
9. Remove and immediately recycle or dispose of batteries from equipment not used for an extended period of time according to local regulations.
10. Always completely secure the battery compartment. If the battery compartment does not close securely, stop using the product, remove the batteries, and keep them away from children.
11. Do not mix old and new batteries, different brands or types of batteries, such as alkaline, carbon-zinc, or rechargeable batteries.

Use and Care Instructions

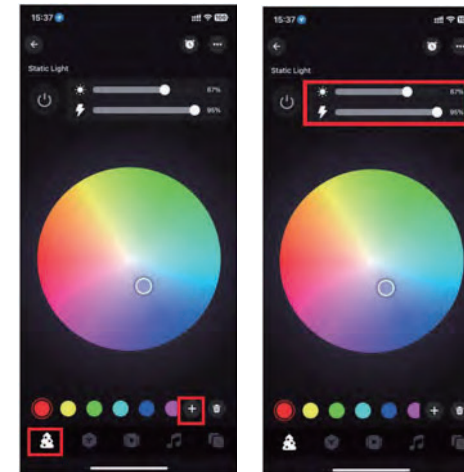
- a. When the product is placed on a live tree, the tree should be well maintained and fresh. Do not place on live trees in which the needles are brown or break off easily. Keep the tree holder filled with water.
- b. If the product is placed on a tree, the tree should be well secured and stable.
- c. Before using or reusing, inspect product carefully. Discard any products that have cut, damaged or frayed wire insulation or cords, cracks in the lampholders or enclosures, loose connections, or exposed copper wire.
- d. When storing the product, carefully remove the product from wherever it is placed, including tree, branches, or bushes, to avoid any undue strain or stress on the product conductors connections, and wires.
- e. When not in use, store neatly in a cool, dry location protected from sunlight.

3. Detailed introduction of APP functions:

1) Colorful features:

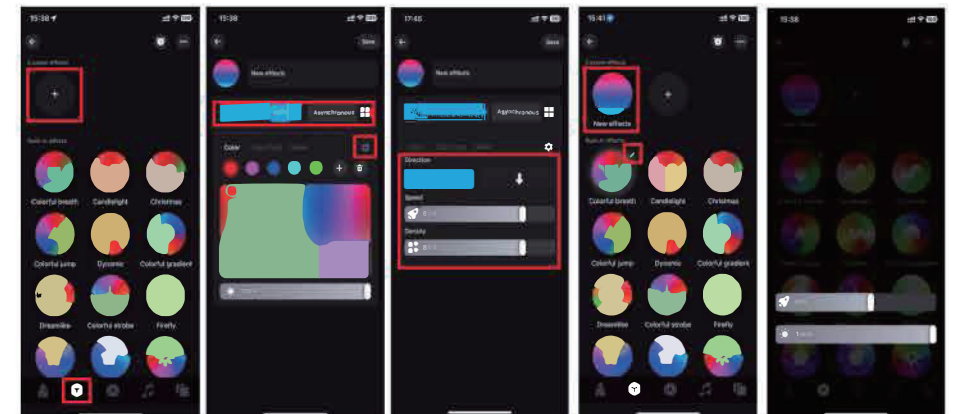
- 1) 16 million colors to choose from, click the "+" in the lower right corner to add different color choices.

- 2) Brightness and speed can be adjusted.



2) Lighting effect

- 1) Click "+" to create a new custom effect mode, select different colors and lighting effects; Click the Settings icon in the top right corner to adjust the direction, speed, and density of the light.
- 2) Different lighting effects modes can also be selected in the built-in effects, and the speed and brightness can be adjusted.

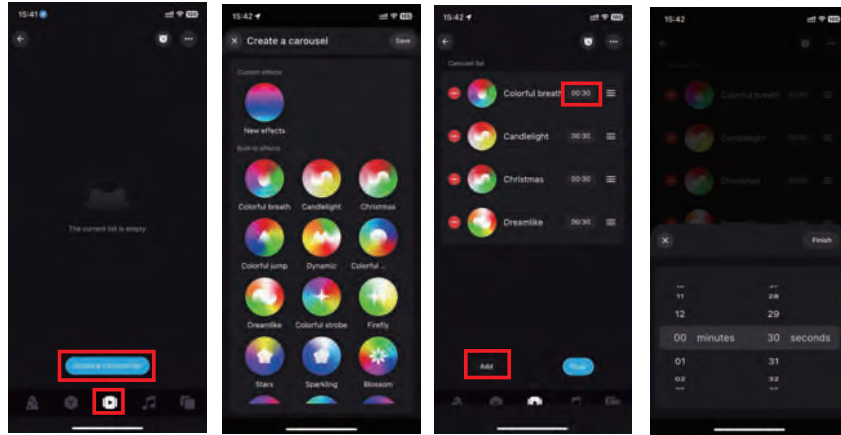


210 mm

145 mm

3) carousel list

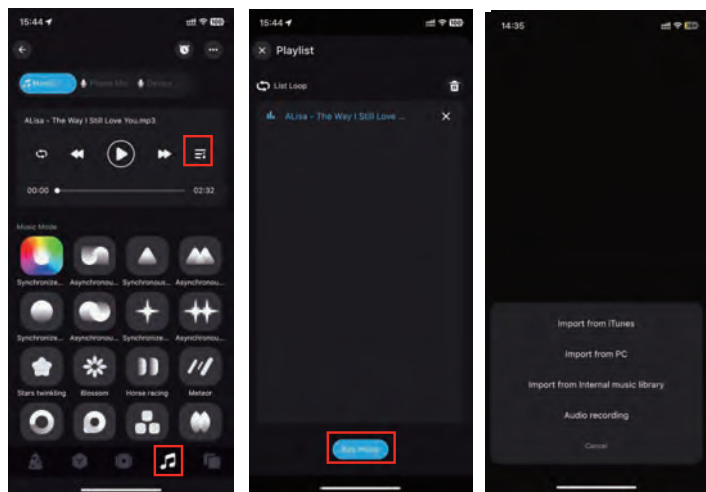
Select different types of lighting effect mode to save, set the lighting effect duration. Combine different lighting effects to play sequentially. Edit long press to drag order.



4).Music

① Music mode: The lighting changes with the rhythm of the music, and you can choose different music modes.

Click "Add Music" to import the music file or import from the built-in music library. Note: IOS requires downloading music files to iTunes or importing music from PC according to the instructions, selecting music from the built-in mode or audio recording. Android requires downloading music files to the phone to use.




- a) Remove and immediately recycle or dispose of used batteries according to local regulations and keep away from children, Do NOT dispose of batteries in household trash or incinerate.
- b) Even used batteries may cause severe injury or death.
- c) Call a local poison control center for treatment information.
- d) The battery type is a lithium-metal , non-rechargeable Cr2025.
- e) The nominal battery voltage is 3v DC.
- f) Non-rechargeable batteries are not to be recharged.
- g) Do not force discharge, recharge, disassemble, heat above 65°C or incinerate. Doing so may result in injury due to venting, leakage or explosion resulting in chemical burns.
- h) Ensure the batteries are installed correctly according to polarity (+ and -).
- i) Do not mix old and new batteries, different brands or types of batteries, such as alkaline, carbon-zinc, or rechargeable batteries.
- j) Remove and immediately recycle or dispose of batteries from equipment not used for an extended period of time according to local regulations.
- k) Always completely secure the battery compartment. If the battery compartment does not close securely, stop using the product, remove the batteries, and keep them away from children.



210 mm

145 mm

210 mm

**WARNING**

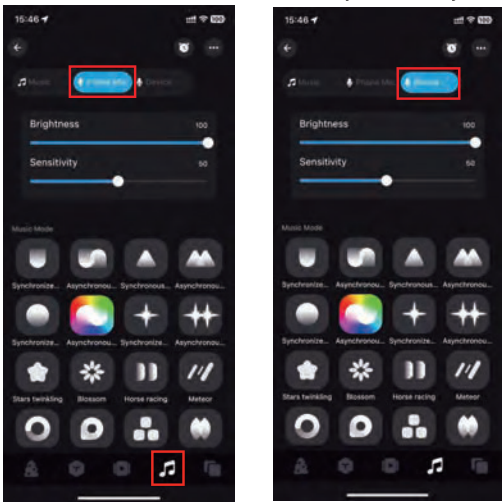
INGESTION HAZARD: This product contains a button cell or coin battery. DEATH or serious injury can occur if ingested. A swallowed button cell or coin battery can cause Internal Chemical Burns in as little as 2 hours. KEEP new and used batteries OUT OF REACH of CHILDREN Seek immediate medical attention if a battery is suspected to be swallowed or inserted inside any part of the body.



145 mm

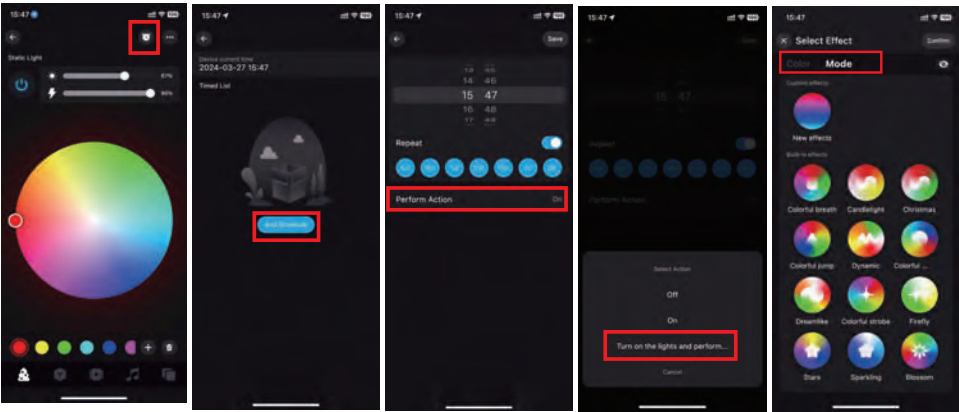
②Microphone

Mobile phone microphone or device microphone function (voice-activated version only), according to the microphone received signal into a different rhythm of the light effect, you can choose different music effect mode, you can adjust the brightness and sensitivity.



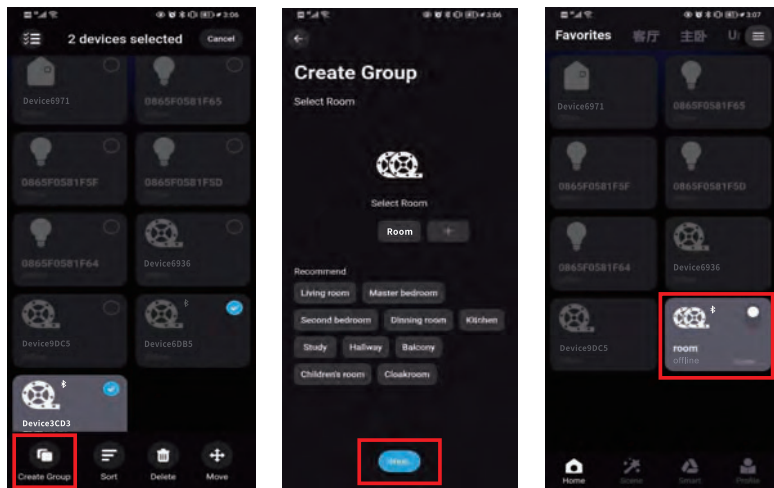
5).Timing

- a).Switch on and off the lights they control based on the time you set.
- b).When you turn on the light, you can freely choose different lighting effects in the color light or mode.



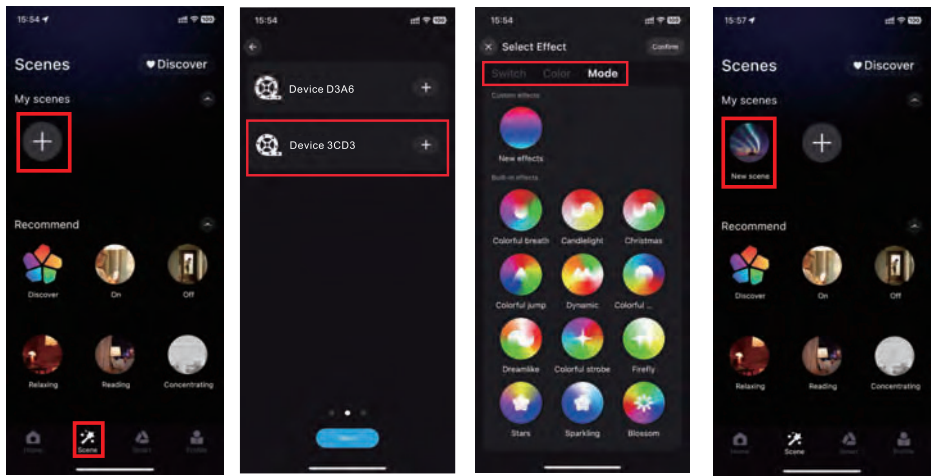
6).Group control

Multiple controllers can be classified into the same group, and the devices in the group can be controlled by one-click dimming, switching and other functions.



7) Scene function

In the scene interface, find the corresponding controller according to your personal needs to create different scene light colors or dynamic effects.



Notice

- 1)Please use the product in a dry environment;
- 2)Input voltage please use 12-36V DC voltage, do not directly use 220V AC;
- 3)This product is anode connection mode, do not connect wrong, easy to lead to product failure.

FCC Caution:

This device complies with part 15 of the FCC Rules. Operation is subject to the following two conditions: (1) this device may not cause harmful interference, and (2) this device must accept any interference received, including interference that may cause undesired operation.

Any changes or modifications not expressly approved by the party responsible for compliance could void the user's authority to operate the equipment.

NOTE: This equipment has been tested and found to comply with the limits for a Class B digital device, pursuant to Part 15 of the FCC Rules. These limits are designed to provide reasonable protection against harmful interference in a residential installation. This equipment generates, uses and can radiate radio frequency energy and, if not installed and used in accordance with the instructions, may cause harmful interference to radio communications. However, there is no guarantee that interference will not occur in a particular installation.

If this equipment does cause harmful interference to radio or television reception, which can be determined by turning the equipment off and on, the user is encouraged to try to correct the interference by one or more of the following measures:

- Reorient or relocate the receiving antenna.
 - Increase the separation between the equipment and receiver.
 - Connect the equipment into an outlet on a circuit different from that to which the receiver is connected.
 - Consult the dealer or an experienced radio/TV technician for help.
- To maintain compliance with FCC's RF Exposure guidelines, This equipment should be installed and operated with minimum distance between 20cm the radiator your body: Use only the supplied antenna.

210 mm

145 mm