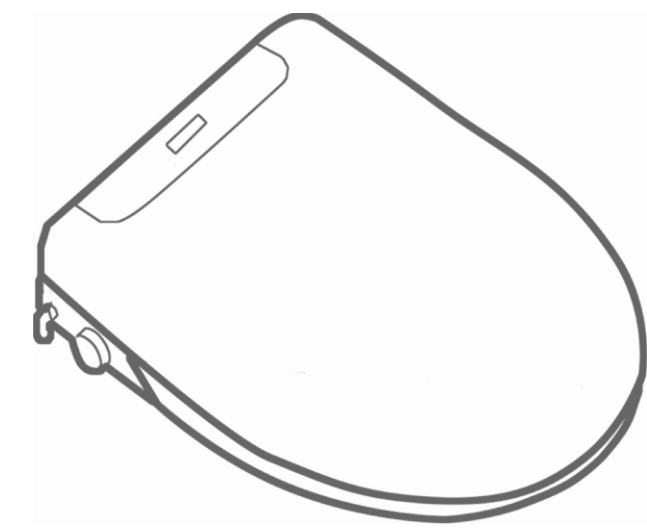


1.Product Introduction

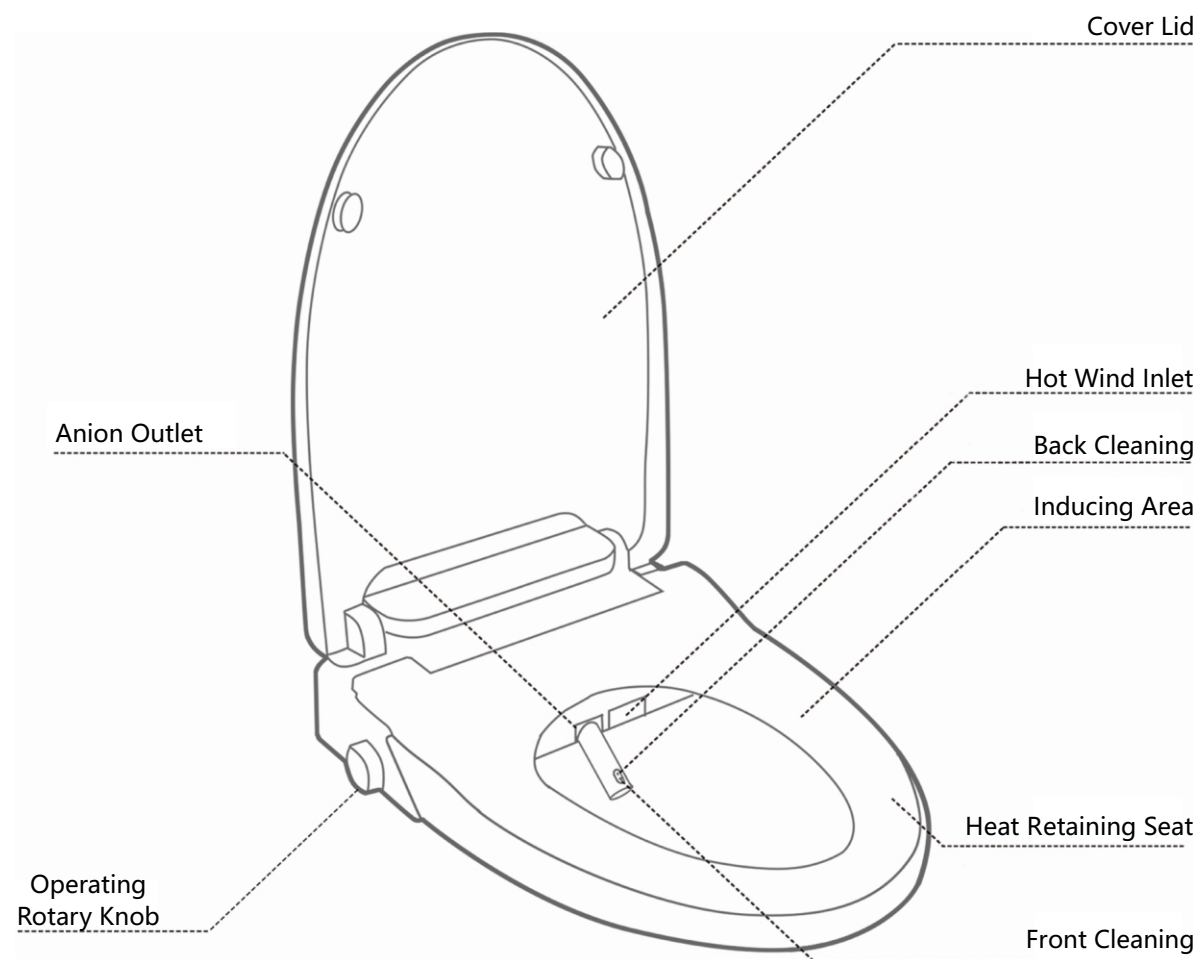


**Y101E: Simple Model**  
rotary knob+ultraviolet night light+ABS nozzel (antibacterial) + nozzle self-clean

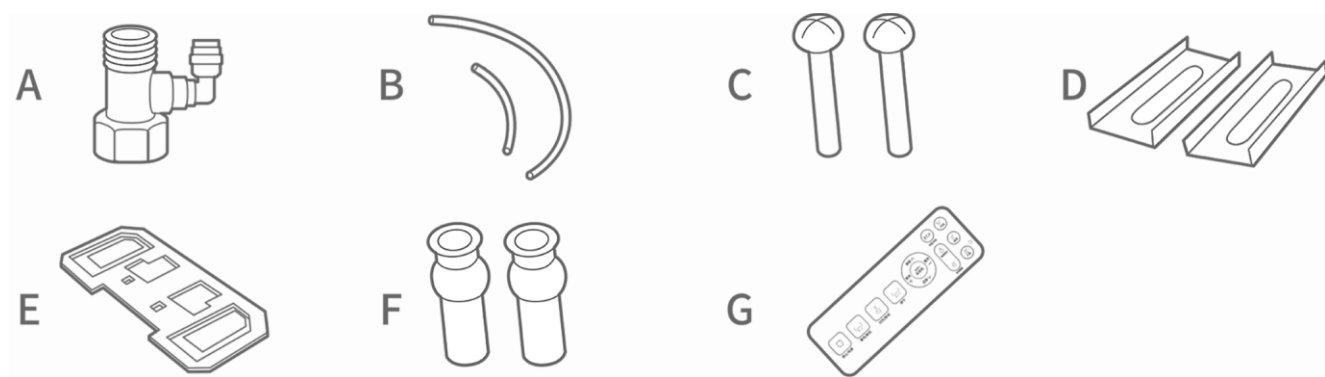
**Y101: Basic Model**  
rotary knob+Light sensitive ultraviolet night light+stainless steel nozzle+nozzle self-clean+hot wind

**Y101S: Upgraded Model**  
rotary knob+Light sensitive ultraviolet night light+stainless steel nozzle+nozzle self-clean+hot wind+nozzle automatic pasteurizer

**Y101XS: Flagship Model**  
rotary knob+Light sensitive ultraviolet night light+stainless steel nozzle+nozzle self-clean+hot wind+nozzle automatic pasteurizer+automatic flip



2.Packaged Accessories



	Name	Qty
A	T-joint	1 unit
B	Quick Coupling	2 unit
C	Install Screws	2 unit
D	Adjustment Plate	2 unit

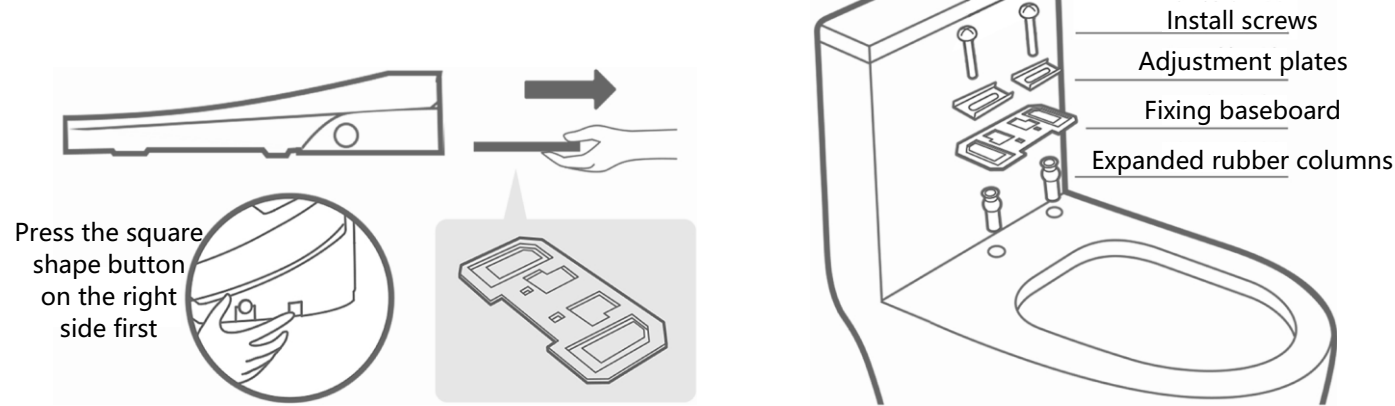
	Name	Qty
E	Fixing	1 unit
F	Baseboard	2 unit
G	Expanded rubber columns	2 unit
	remote control	

3.Installation Method

Precautions before installation

- 1. The water pressure range is between 0.05-0.75Mpa
- 2. Be sure to use the machine with original accessories and consumables
- 3. Do not insert the power plug into the socket before the installation is complete. Otherwise, faults may occur.

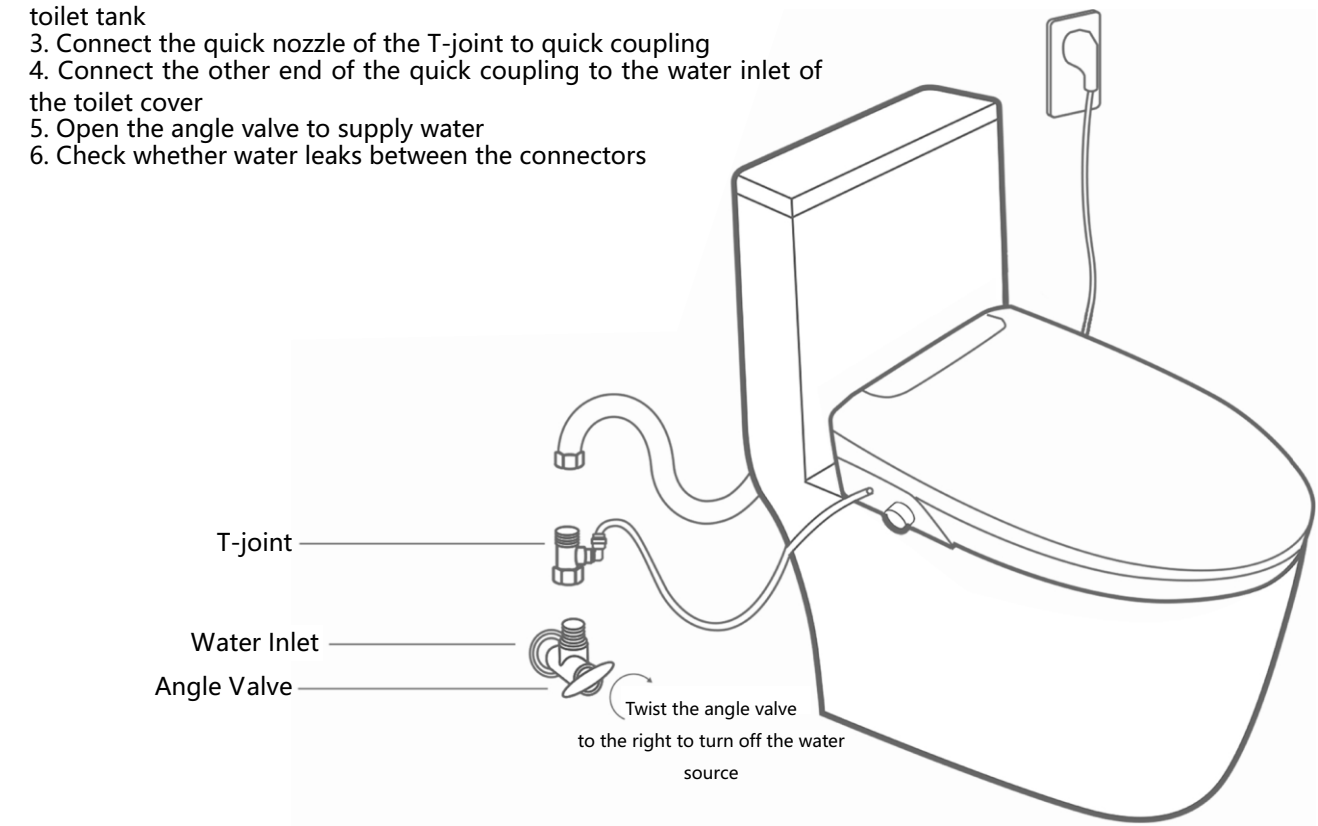
The Installation of Fixing Baseboard



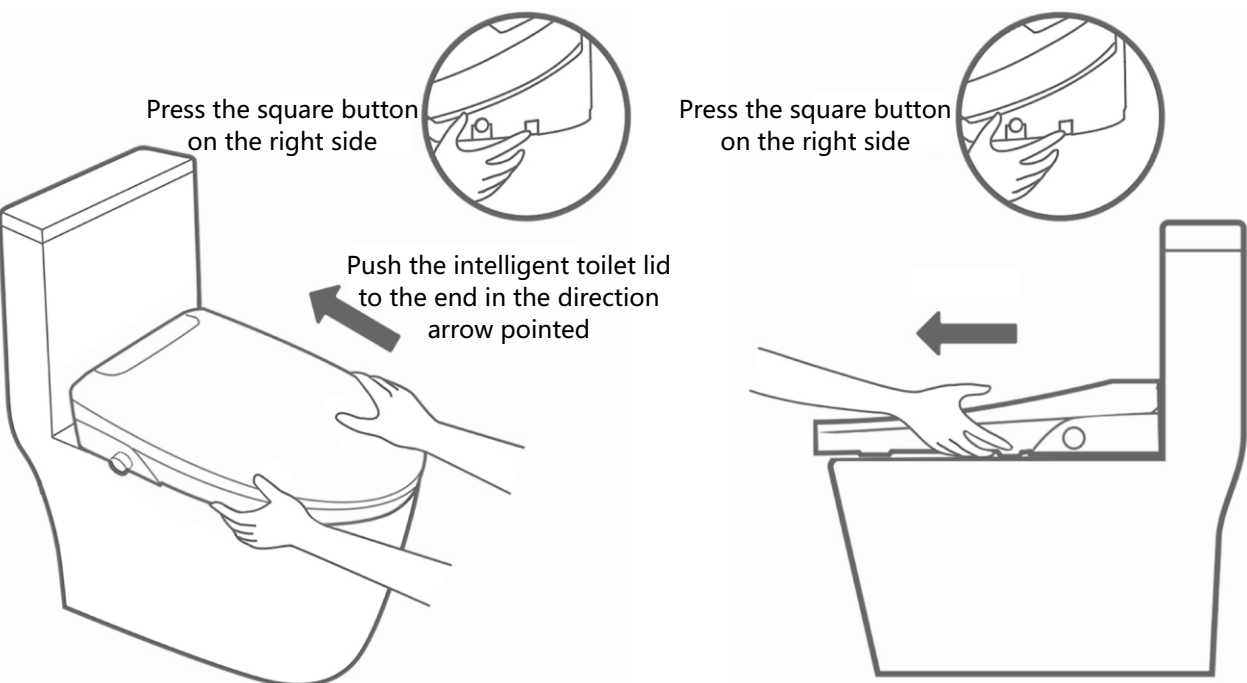
- 1. Press the square button on the right side and pull out the fixing plate at the same time.
- 2. Assemble the screws, gaskets, adjustment plates, fixing baseboard, and expanded rubber columns in sequence.

Connecting External Water Pipe

- 1. Twist the angle valve to the right to turn off the water sour
- 2. Connect the threaded end of the T-joint to the water pipe on the toilet tank
- 3. Connect the quick nozzle of the T-joint to quick coupling
- 4. Connect the other end of the quick coupling to the water inlet of the toilet cover
- 5. Open the angle valve to supply water
- 6. Check whether water leaks between the connectors

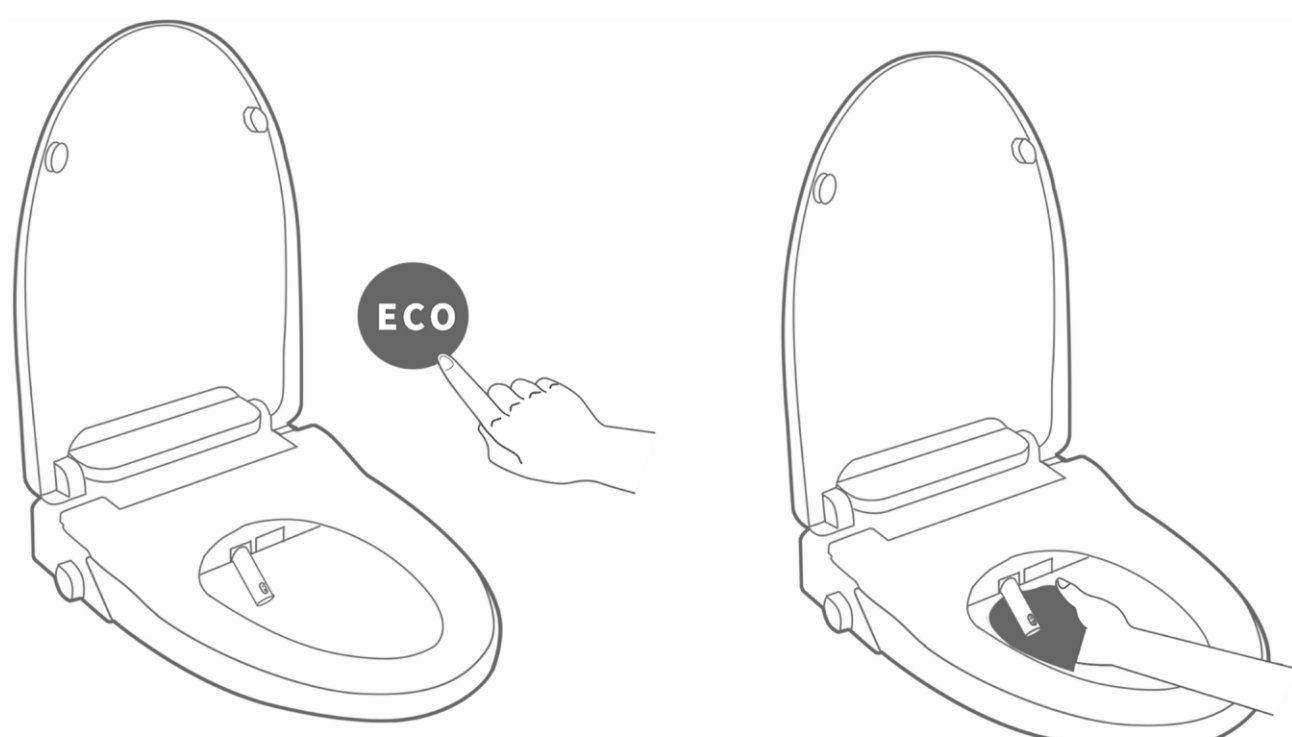


4.Main Part Disassembly



- 1.After lid is assembled with ceramic, push it slowly while holding two sides of the lid.
- 2. Hold the two sides of the lid while pulling it out. Direction as top arrows pointed. Disassembly steps shown in top pictures.

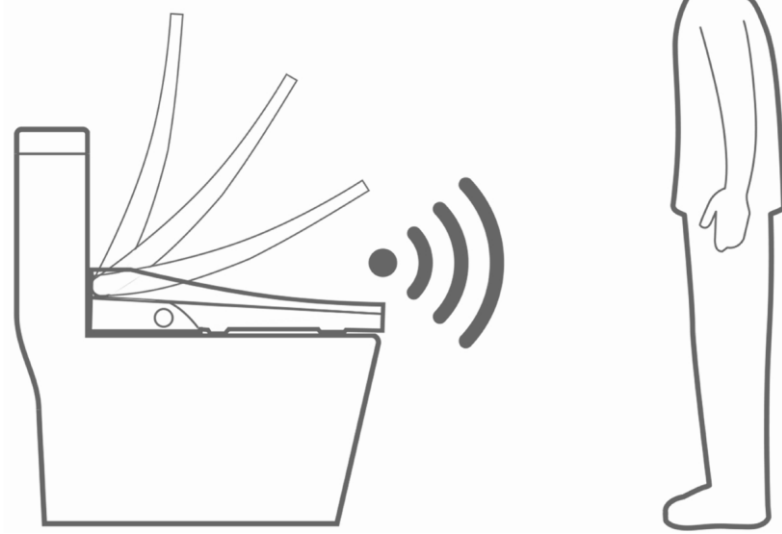
5.Cleaning Method



- 1. When no one is sitting, long press the ECO button. Nozzle will move outwards for water spray or nozzle cleaning
- 2. Use a toothbrush or soft cloth for cleaning. After cleaning, press the ECO button, nozzle will return to original position.

6. Function - radar sensing automatic flip

- 1. When the radar detects a human body approaching, the toilet cover automatically flips. It can also be operated by pushing down the flip button on the remote control. If no human body is detected within 90 seconds, the plastic seat washer and lid will drop automatically



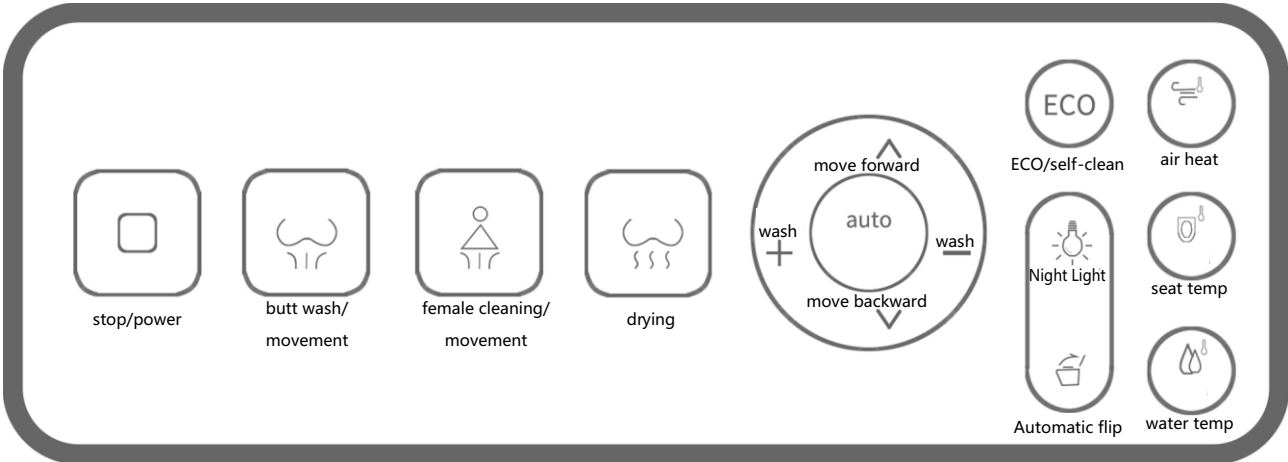
7. Function-remote control and rotary knob

Rotary Knob

- 1. when it's on, the ambient light cyclicly breath-flashes
- 2. when it's seated, clock-wise rotate the button (face to button) : butt wash [green light]
- 3. when it's seated, anticlockwise rotate the button (face to button): female cleaning [red]
- 4. when it's seated, push down the button: drying/stop
- 5. Long press the knob to turn the power on/off



Remote Control



Butt wash/moving wash  
Press this button to turn on 'butt wash mode'. It automatically stops after 90s. During washing, press again to let nozzle move back and forth to clean more area. The washing force can be adjusted by pressing the +/- button during washing.



Intelligent power saving/nozzle self-cleaning  
When no one is sitting, pressing this button will make two 'beep' sounds to enter the power saving mode. Long press this button, the nozzle will automatically stick out and enter 'self-cleaning mode'. Long press again, nozzle will end 'self-cleaning' and return to original location.



Female cleaning/moving wash  
Press this button to turn on 'female cleaning mode'. It automatically stops after 90s. During washing, press again to let nozzle move back and forth to clean more area. The washing force can be adjusted by pressing the +/- button during washing.



Night Light  
Press the button to turn on/off the night light.



Hot Wind Drying  
Press this button to turn on 'hot wind drying'. It automatically stops after 180s. During washing, press again to let nozzle move back and forth to clean more area. During drying, push down the +/- button can switch to 4 temp modes: normal-low-medium-temp.high temp.



Nozzle Position Adjustment  
Press this button to adjust nozzle position back and forth.



Full-automatic  
Press this button to turn on 'full-automatic cleaning mode'. It will run automatically operate in the sequence of "cleaning-moving massage-drying"



Pause/power  
Press this button to pause the function in use. Long press to turn on/off power.



Automatic sensing flip  
Press this button to turn on 'automatic sensing mode'. Long press to turn on/off radar sensing flip.



Deodorization  
The machine has built-in anion deodorization device, which automatically opens after use and works for 180 seconds



Seat Temperature  
Press this button to adjust seat temperature. There are 4 cyclic temps: normal/low/medium/high, which can be adjusted as needed.



Water Temperature  
Press this button to adjust wind temperature. There are 4 cyclic temps: normal/low/medium/high, which can be adjusted as needed.



Wind Temperature  
Press this button to adjust wind temperature. There are 4 cyclic temps: normal/low/medium/high, which can be adjusted as needed.



Water Pressure  
Press this button to adjust water pressure. There are 3 levels: low, medium and high pressure.

8. Announcements



Be sure to follow the following safety precautions

Please use the hose assembly that comes with the machine. Old hose assemblies cannot be reused

This product belongs to electrical products. Do not place it in a place where it is easy to be soaked by water or high humidity

Do not disassemble, repair or transform the product by yourself, otherwise it may cause failure.

Please confirm that the power socket of this product must be 220V/50Hz

Do not pour water or detergent on the product body or power plug, otherwise it will cause electric shock or failure

Please use sockets that can handle more than 1600W

Do not plug and unplug the power supply with wet hands, which may cause the risk of electric shock.

If the power cord is damaged, it must be replaced by a professional in the manufacturer's maintenance department or similar department in order to avoid danger

Make sure the water is clean



Safety information/precautions

- 1. Do not use banana water, gasoline, medicine, detergent or insect agent to wipe this product
- 2. Do not put aromatic agents or medicines in the water tank
- 3. If you sit on the smart toilet for a relatively long time, please set the temperature of the cushion to low
- 4. Do not turn the product upside down when it is powered on but not supplied with water. This may cause heating pipe failure.
- 5. This device should not be used by persons (including children) with physical, perceptual, intellectual, or ability defects or lack of experience or common sense, unless the guardian or parent has set it up in advance, or has given the user adequate guidance on how to use it.
- 6. Do not step on the cover plate, seat ring and operating panel with your feet. Children should not play with this product.
- 7. Household lines and sockets must meet national standards and have reliable grounding. It is strictly prohibited to use the power strip with two holes and insufficient power as an extension cable.
- 8. Do not put lit cigarettes into the toilet or place high temperature and combustible materials near the toilet



Forbid



No High Temperature

9. Items to be Confirmed Before Requesting Maintenance/Technical Parameters

Symptom	Please check	Solution
Completely unable to start	Whether power is off or not connected to a socket	Please confirm the plug is plugged into to the socket
		Please pull the plug out and re-plug it in to the socket
Flush with no water comes out or flush unsmooth	Whether the water supply is off or the water supply valve is closed	Please check if the water supply valve is open
	Whether the water filter is blocked	Please clean water filter
	Whether the nozzle is blocked by scale	Please clean the nozzle with a toothbrush
Water leak	The water supply pipe connection is tightened	Please tighten the water supply pipe connection
		Please re-adjust the temperature
Water temperature or seat cushion temperature too low	Whether the water temperature and seat cushion temperature is adjusted to normal temperature	

Specification		AC 200V 50Hz 1600W
Water supply	method	Directly connect to water pipe
	pressure	0.05-0.75Mpa
Washing unit	Butt wash volume	0.7L/min
	Female cleaning volume	0.85L/min
	Temperature adjustment	3 adjustable temperature selection
	Heating power	Temperature switch, water
Seat cushion heating unit	Safety device	temperature sensor
	Temperature adjustment	3 adjustable temperature selection
	Heating power	45W
Hot wind trying unit	Safety device	Temperature switch, temperature fuse, seat temperature sensor
	Temperature adjustment	Normal-high temp (around 55
	Heating power	350W
Other safety unit	Safety device	Temperature switch, temperature fuse
	leakage protector	
	Power cord length	around 1.3m
Product category	split-type smart toilet	
Product dimension	Relative longer one: 510x440x110mm Relatively shorter one: 475x440x110mm	
Product weight	5.8kg	

Ningbo Yitian Intelligent Technology Co., Ltd

Operation Instruction

SMART TOILET SERIES

This device complies with part 15 of the FCC Rules. Operation is subject to the following two conditions: (1) This device may not cause harmful interference, and (2) this device must accept any interference received, including interference that may cause undesired operation.

Any Changes or modifications not expressly approved by the party responsible for compliance could void the user's authority to operate the equipment.

**Note:** This equipment has been tested and found to comply with the limits for a Class B digital device, pursuant to part 15 of the FCC Rules. These limits are designed to provide reasonable protection against harmful interference in a residential installation. This equipment generates uses and can radiate radio frequency energy and, if not installed and used in accordance with the instructions, may cause harmful interference to radio communications. However, there is no guarantee that interference will not occur in a particular installation. If this equipment does cause harmful interference to radio or television reception, which can be determined by turning the equipment off and on, the user is encouraged to try to correct the interference by one or more of the following measures:

- Reorient or relocate the receiving antenna.
- Increase the separation between the equipment and receiver.
- Connect the equipment into an outlet on a circuit different from that to which the receiver is connected.
- Consult the dealer or an experienced radio/TV technician for help.

#### FCC Radiation Exposure statement

The device has been evaluatec to meel general RF exposure requirement. The device can be used in portable exposure condition without restriction.