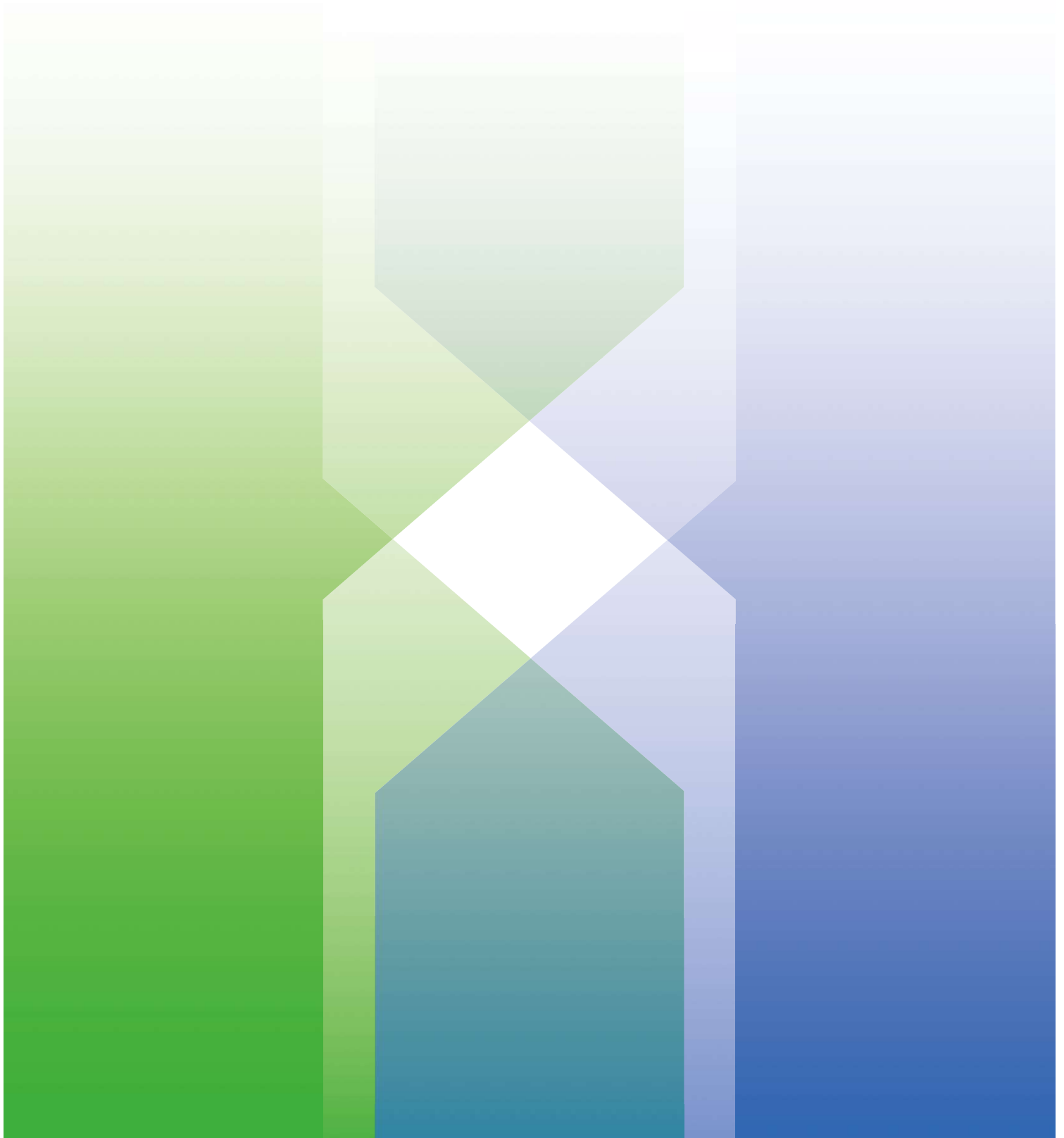


Wireless Adapter

USER MANUAL



Instructions before use

(Pay attention)

1. Pls delete or neglect the original car Bluetooth from your phone before use our product.
2. Pls don't connect Wireless Adapter WiFi and not input password, just only turn on WiFi for data transfer, after you pair Wireless Adapter Bluetooth, Wireless Adapter WiFi will automatically connect.
3. Pls don't connect Wireless Adapter bluetooth with your original car, just connect Wireless Adapter bluetooth with your phone.

Compatibility Note

Supported car models: Cars with original wired CarPlay or Android Auto function

iPhone for wireless CarPlay function: iPhone 6 and above model, IOS 10 and above version

Android-Telefone für kabellose Android Auto-Funktion: unterstützt Android 11 und höher mit der neuesten Android Auto-Funktion

How to check if your car is equipped with wired CarPlay or Android Auto function

Method 1:

Connect your iPhone or Android phone to your car via USB cable to view the logo on the connected interface car display



Method 2:

Check the compatibility list below or check with your car manufacturer to see if your car has the capability. Scan the QR code to view supported models:



CarPlay

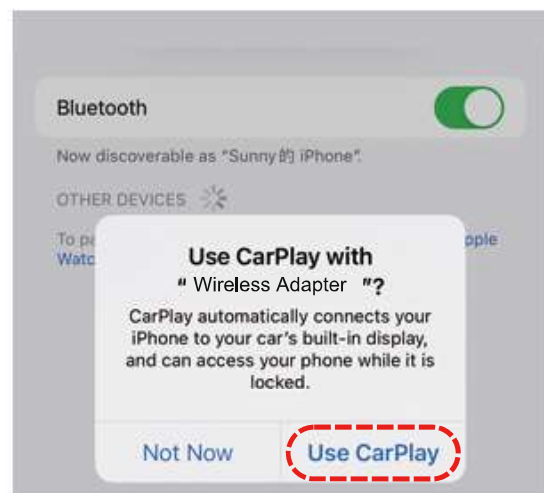
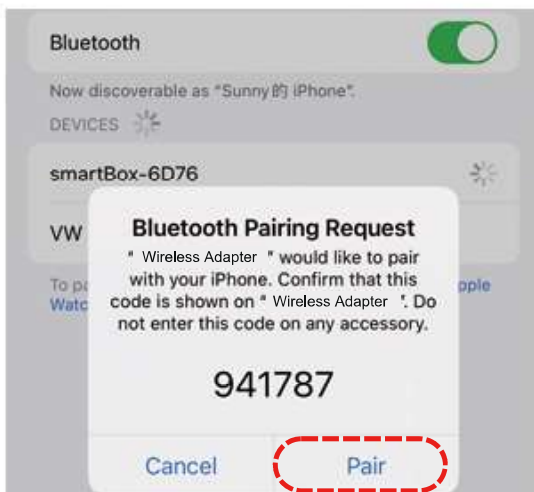
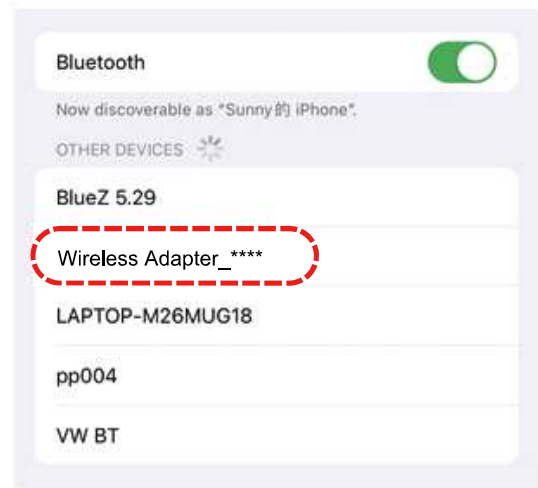
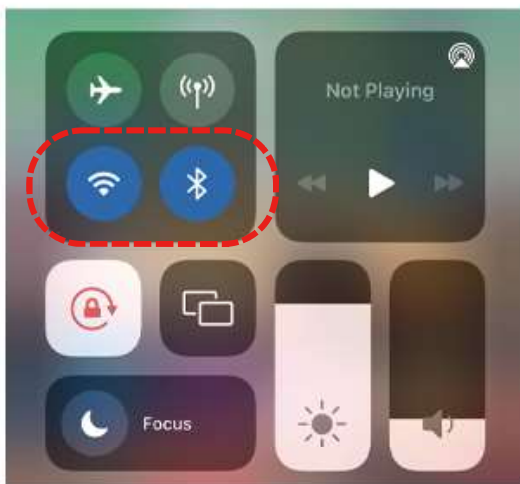


Android Auto

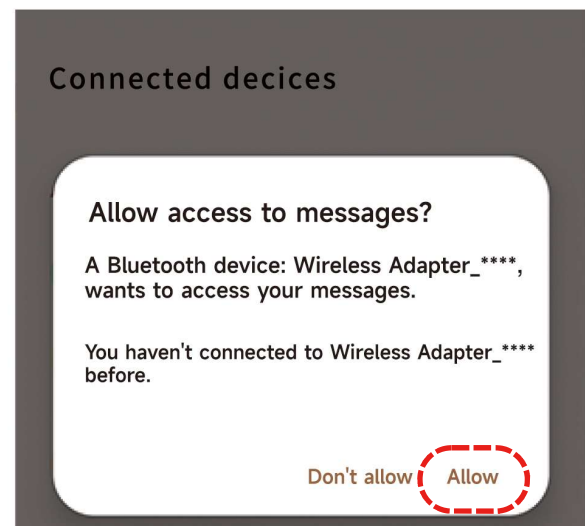
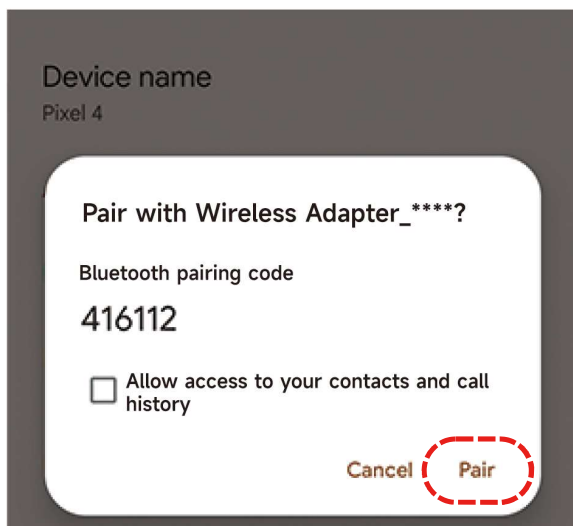
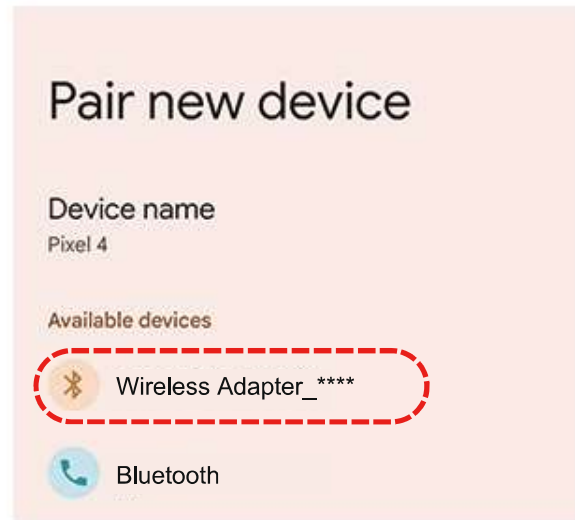
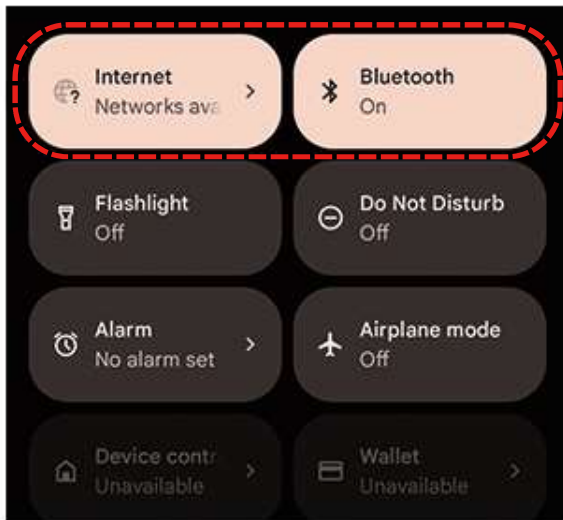
How to use

Apple iOS Connection

1. Start the car and wait for the car head unit system to be loaded
2. Connect the wireless adapter to the USB-A or USB-C port in your car. please be sure to plug the adapter into the port used for wired CarPlay or Android Auto
3. Turn on Wi-Fi and Bluetooth on your iPhone or Android phone, and find the Bluetooth name "Wireless Adapter ****", click "Pair"; click "Allow"; click "Use Carplay" or "Use Android Auto"



Android Auto Connection



4. You are ready to enjoy wireless CarPlay or Android Auto Auto.

Please note

1. The wireless adapter works by using Bluetooth to establish a pairing between your iPhone or Android phone and your car, and then switching to using Wi-Fi to maintain a wireless connection.

2. Make sure the wireless adapter's power indicator blue light is on.
3. Make sure your car supports the original wired CarPlay or Android Auto.

Packing List

Wireless Adapter *1.	User Manual *1
USB to Type-C adapter * 1	

FAQ

1. What is the Wi-Fi password for the Wireless CarPlay Adapter?

We need to connect Bluetooth, not Wi-Fi. After Bluetooth matching is successful, Wi-Fi will automatically connect without entering a Wi-Fi password. Make sure your Wi-Fi is on and unoccupied when pairing

2. After pairing the Android Auto adapter, the Android Auto function cannot be started or the compatible USB cannot be recognized.

2.1 If your car uses the Android Auto function for the first time, please use a data cable to connect your Android phone to activate the Android Auto function.

2.2 Please make sure that Android Auto on your Android phone is the last version. If not, please update to the latest version.

2.3 Please turn off the Bluetooth on your Android phone and enter the mobile application management to search Android Auto to clear the cache. After cleaning is completed, restart the adapter and reconnect Bluetooth

3. Audio input or output issues: Calls are rejected or transferred to voicemail / No sound playback / Microphone not working / Music playback interrupted or paused / Abnormal voice function...

3.1 Please check whether the Bluetooth of the iPhone/Android phone is connected to other devices, such as headphones, watches... If so, please disconnect other automatically connected Bluetooth devices. The Android phone also needs to be connected to the car Bluetooth to use the Android Auto function.

3.2 During a call, check whether the "audio" output option is CarPlay or Android Auto

4. The adapter indicator light is still on after the car is turned off.

4.1 Because the car does not cut off all power immediately when it is turned off, the adapter's light will not go out immediately, but will take a while. Please rest assured that its power consumption is minimal and will not drain the car battery

5. When using the wireless adapter, can the mobile phone use other network Wi-Fi networks

5.1 When using the wireless adapter function, the mobile phone's Wi-Fi will be occupied by the adapter, so you cannot use its network at the same time and can only use the mobile phone's SIM card network

6. Unable to automatically reconnect

6.1 When you get in the car, please make sure that the Bluetooth and WiFi functions of your phone are turned on and that Bluetooth is not occupied by other devices.

6.2 Clear the pairing record, restart the phone and pair the adapter again.

7. Can the adapter be paired with multiple phones?

7.1 The adapter can be paired with up to five mobile phones, but it can only be connected to one device at a time. If you want to pair with a new mobile phone, please cancel the current connection first. Please note that with Bluetooth functionality by default, the adapter's system will only automatically connect back to the last used phone.

8. Can't find the Bluetooth and Wi-Fi of the wireless Adapter?

- 8.1 Please make sure the blue light of the wireless adapter's power indicator is on and confirm that the adapter is plugged into the port for wired CarPlay or Android Auto. If convenient, please test it with another phone. If only a specific phone cannot find the Bluetooth or Wi-Fi of the adapter, try resetting the network and Bluetooth settings of that phone and then restart the phone. If the same problem occurs on other phones, the adapter may be defective. Please let us know

9. Whether the wireless Adapter support Youtube Video?

9.1 Wireless CarPlay cannot support Youtube

9.2 Wireless Android Auto can support Youtube. Please follow the steps below: Open Google Chrome and enter "AAAADAPK"-----Download APK-----Open "AAAD"-----Download "Carstream"-----Open "Carstream" Enter settings and Choose to enable desktop mode. Then you can enjoy Youtube videos through wireless Android Auto

10. Customer Service:

10.1 Please contact your merchant customer service for technical support

Upgrade Instructions

Pls check the video from QR code that teach you how to upgrade the software from iPhone and Android Phone



iPhone update



Android phone update

View more--Help

以下二维码有待更新!!!



English : Scan the code to view the manual



Spanisch : Escanee el
código para ver el manual



Deutsch : Scannen Sie den
Code, um das Handbuch
anzuzeigen

This device is restricted to indoor use when operating in the
5150 to 5350 MHz frequency range.

FCC warning statements:

This equipment has been tested and found to comply with the limits for a Class B digital device, pursuant to part 15 of the FCC Rules. These limits are designed to provide reasonable protection against harmful interference in a residential installation. This equipment generates, uses and can radiate radio frequency energy and, if not installed and used in accordance with the instructions, may cause harmful interference to radio communications. However, there is no guarantee that interference will not occur in a particular installation. If this equipment does cause harmful interference to radio or television reception, which can be determined by turning the equipment off and on, the user is encouraged to try to correct the interference by one or more of the following measures:

- *Reorient or relocate the receiving antenna.
- *Increase the separation between the equipment and receiver.
- *Connect the equipment into an outlet on a circuit different from that to which the receiver is connected.
- *Consult the dealer or an experienced radio/TV technician for help.

Caution: Any changes or modifications to this device not explicitly approved by manufacturer could void your authority to operate this equipment.

This device complies with part 15 of the FCC Rules. Operation is subject to the following two conditions: (1) This device may not cause harmful interference, and (2) this device must accept any interference received, including interference that may cause undesired operation.

The device has been evaluated to meet general RF exposure requirement. This equipment complies with FCC radiation exposure limits set forth for an uncontrolled environment. This equipment should be installed and operated with minimum distance 20cm between the radiator & your body.



Made in China



Points de collecte sur www.quefairedemesdechets.fr
Privilégiez la réparation ou le don de votre appareil !

