



Shenzhen CTA Testing Technology Co., Ltd.

Room 106, Building 1, Yibaolai Industrial Park, Qiaotou Community, Fuhai Street, Bao'an District, Shenzhen, China

TEST REPORT

Report Reference No.: CTA24120501210

FCC ID.: 2BM3M-NB55

Compiled by

(position+printed name+signature): File administrators Xudong Zhang

Supervised by

(position+printed name+signature): Project Engineer Zoey Cao

Approved by

(position+printed name+signature): RF Manager Eric Wang

Date of issue: Dec. 19, 2024

Testing Laboratory Name: Shenzhen CTA Testing Technology Co., Ltd.

Address: Room 106, Building 1, Yibaolai Industrial Park, Qiaotou Community, Fuhai Street, Bao'an District, Shenzhen, China

Applicant's name: Shenzhen Tongliang Intelligent Technology Co.,Ltd

Address: Unit 5 C 702A B Skyworth Innovation Valley, Shiyan Street Baoan District Shenzhen, China

Test specification.....:

Standard: FCC 47CFR §2.1093; ANSI/IEEE C95.1-2019; IEEE 1528-2013; KDB 941225 D01; KDB 941225 D05; KDB 941225 D06; KDB 248227 D01; KDB 648474 D04; KDB 447498 D01; KDB 865664 D01; KDB 865664 D02; KDB 690783 D01

Shenzhen CTA Testing Technology Co., Ltd. All rights reserved.

This publication may be reproduced in whole or in part for non-commercial purposes as long as the Shenzhen CTA Testing Technology Co., Ltd. is acknowledged as copyright owner and source of the material. Shenzhen CTA Testing Technology Co., Ltd. takes no responsibility for and will not assume liability for damages resulting from the reader's interpretation of the reproduced material due to its placement and context.

Test item description.....: Handheld POS

Trade Mark.....: N/A

Manufacturer.....: Shenzhen Tongliang Intelligent Technology Co.,Ltd

Model/Type reference: NB55

Listed Models: Refer to page 2

Rating: DC 7.6V From battery and DC 5.0V From external circuit

Result.....: PASS

TEST REPORT

Equipment under Test : Handheld POS

Model /Type : NB55

Listed Models : NB60, NB55Pro, NB60Pro, NB55Plus, NB55-S, NB55-S1, NB55-S2, NB55-S3, NB55-S4, NB55-S5, NB55-S6, NB55-S7, NB55-S8, NB55-S9, NB55-S10, NB55_L, NB57, NB36, NB80, NB80Pro, NB80R, NB116, NB55Max, NB10, NB11, NB11R, K32, K33, K35, K36, K37, K38, K39, N101, N102, N103, N105, N106, N107, N108, N109
NXXXXXX(X=1~9, A~Z or a~z), KXXXXXX(X=1~9, A~Z or a~z),
TXXXXXX(X=1~9, A~Z or a~z),
FXXXXXX(X=1~9, A~Z or a~z), PXXXXXX(X=1~9, A~Z or a~z),
BXXXXXX(X=1~9, A~Z or a~z)

Model difference : The PCB board, circuit, structure and internal of these models are the same, Only model number is different for these model.

Applicant : Shenzhen Tongliang Intelligent Technology Co.,Ltd

Address : Unit 5 C 702A B Skyworth Innovation Valley, Shiyan Street Baoan District Shenzhen, China

Manufacturer : Shenzhen Tongliang Intelligent Technology Co.,Ltd

Address : Unit 5 C 702A B Skyworth Innovation Valley, Shiyan Street Baoan District Shenzhen, China

Test Result:	PASS
--------------	------

The test report merely corresponds to the test sample.

It is not permitted to copy extracts of these test result without the written permission of the test laboratory.

※ ※ Revision History ※ ※

REV.	ISSUED DATE	DESCRIPTION
Rev.1.0	Dec. 19, 2024	Initial Test Report Release

Contents

1	Statement of Compliance	6
2	General Information.....	7
2.1	General Remarks	7
2.2	Description of Equipment Under Test (EUT).....	7
2.3	Device Category and SAR Limits	10
2.4	Applied Standard	10
2.5	Test Facility	11
2.6	Environment of Test Site.....	12
2.7	Test Configuration.....	12
3	Specific Absorption Rate (SAR)	13
3.1	Introduction	13
3.2	SAR Definition	13
4	SAR Measurement System	14
4.1	E-Field Probe.....	14
4.2	Data Acquisition Electronics (DAE).....	15
4.3	Robot.....	16
4.4	Measurement Server	16
4.5	Phantom	17
4.6	Device Holder.....	17
4.7	Data Storage and Evaluation.....	18
5	Test Equipment List.....	20
6	Tissue Simulating Liquids.....	21
7	System Verification Procedures	23
8	EUT Testing Position.....	25
8.1	Body-worn accessory exposure conditions.....	25
9	Measurement Procedures	26
9.1	Spatial Peak SAR Evaluation	26
9.2	Power Reference Measurement.....	26
9.3	Area Scan Procedures	27
9.4	Zoom Scan Procedures.....	27
9.5	Volume Scan Procedures	28
9.6	Power Drift Monitoring	28
10	TEST CONDITIONS AND RESULTS.....	29
10.1	Conducted Power Results	29
10.2	Transmit Antennas.....	42
10.3	SAR Test Exclusion and Estimated SAR	43
10.4	SAR Test Results.....	47
11	Estimated SAR	51
12	Simultaneous Transmission Analysis	52
13	Measurement Uncertainty	53
Appendix A.	EUT Photos and Test Setup Photos.....	54
Appendix B.	Plots of SAR System Check	57

Appendix C. Plots of SAR Test Data.....	61
Appendix D. DASY System Calibration Certificate.....	69

1 Statement of Compliance

<Highest SAR Summary>

This device is in compliance with Specific Absorption Rate (SAR) for general population/uncontrolled exposure limits (1.6 W/kg) specified in FCC 47 CFR part 2 (2.1093) and ANSI/IEEE C95.1-2005, and had been tested in accordance with the measurement methods and procedures specified in IEEE 1528-2013. The maximum results of Specific Absorption Rate (SAR) found during testing are as follows.

<Highest SAR Summary>

Frequency Band	Highest Reported 1g-SAR(W/Kg)	Simultaneous Reported SAR (W/Kg)
	Body (0mm)	
GSM 850	0.633	1.113
PCS1900	0.512	
WCDMA Band II	0.427	
WCDMA Band V	0.590	
LTE Band 2	0.493	
LTE Band 5	0.560	
LTE Band 7	0.735	
WLAN2.4G	0.378	
SAR Test Limit (W/Kg)	1.60	
Test Result	PASS	

2 General Information

2.1 General Remarks

Date of receipt of test sample	:	Dec. 05, 2024
Testing commenced on	:	Dec. 05, 2024
Testing concluded on	:	Dec. 19, 2024

2.2 Description of Equipment Under Test (EUT)

Product Name:	Handheld POS
Model/Type reference:	NB55
Listed Models:	NB60, NB55Pro, NB60Pro, NB55Plus, NB55-S, NB55-S1, NB55-S2, NB55-S3, NB55-S4, NB55-S5, NB55-S6, NB55-S7, NB55-S8, NB55-S9, NB55-S10, NB55_L, NB57, NB36, NB80, NB80Pro, NB80R, NB116, NB55Max, NB10, NB11, NB11R, K32, K33, K35, K36, K37, K38, K39, N101, N102, N103, N105, N106, N107, N108, N109 NXXXXXX(X=1 ~ 9, A ~ Z or a~z), KXXXXXX(X=1 ~ 9, A ~ Z or a~z), TXXXXXX(X=1 ~ 9, A ~ Z or a~z), FXXXXXX(X=1 ~ 9, A ~ Z or a~z), PXXXXXX(X=1 ~ 9, A ~ Z or a~z), BXXXXXX(X=1 ~ 9, A ~ Z or a~z)
Power supply:	DC 7.6V From battery and DC 5.0V From external circuit
Adapter information:	Model: GA-0502000 Input: AC 100-240V 50/60Hz 0.6A Output: DC 5.0V 2.0A
Testing sample ID:	CTA241205012-1# (Engineer sample) CTA241205012-2# (Normal sample)
Hardware version:	V1.0
Software version:	V1.0
WIFI2.4G	
Supported type:	802.11b/802.11g/802.11n(H20)
Modulation:	802.11b: DSSS 802.11g/802.11n(H20): OFDM
Operation frequency:	802.11b/802.11g/802.11n(H20): 2412MHz~2462MHz
Channel number:	802.11b/802.11g/802.11n(H20): 11
Channel separation:	5MHz
Antenna type:	PIFA antenna
Antenna gain:	2.23 dBi
Bluetooth BLE	

Supported type:	Bluetooth low Energy
Modulation:	GFSK
Operation frequency:	2402MHz to 2480MHz
Channel number:	40
Channel separation:	2 MHz
Antenna type:	PIFA antenna
Antenna gain:	2.23 dBi
Bluetooth	
Supported Type:	Bluetooth BR/EDR
Modulation:	GFSK, $\pi/4$ DQPSK, 8DPSK
Operation frequency:	2402MHz~2480MHz
Channel number:	79
Channel separation:	1MHz
Antenna type:	PIFA antenna
Antenna gain:	2.23 dBi
GSM	
Modulation Type	GMSK
GSM/EDGE/GPRS	Supported GSM/GPRS
GSM/GPRS Power Class	GSM850:Power Class 4/ PCS1900:Power Class 1
GSM/GPRS Operation Frequency	GSM850 :824.2MHz-848.8MHz/PCS1900:1850.2MHz-1909.8MHz
GPRS Operation Frequency Band	GPRS850/GPRS1900
GPRS Multislot Class	Multi-slot Class 12
GPRS operation mode	Class B
Antenna Type:	PIFA antenna
Antenna Gain:	GSM850: 0.24 dBi,DCS1900: 2.23 dBi
WCDMA	
Operation Band:	FDD Band II & Band V
Power Class:	Power Class 3
Modulation Type:	QPSK for WCDMA/HSUPA/HSDPA,16QAM for HSPA+
Release Version:	R8
Antenna type:	PIFA antenna
Antenna gain:	FDD Band II: 2.23 dBi FDD Band V: 0.24 dBi
LTE	

Operation Band:	<input checked="" type="checkbox"/> E-UTRA Band 2(U.S.-Band) <input checked="" type="checkbox"/> E-UTRA Band 5(U.S.-Band) <input checked="" type="checkbox"/> E-UTRA Band 7(U.S.-Band)
Release Version:	Release 9
Modulation Type:	QPSK, 16QAM
Category:	Cat 4
Antenna Description:	PIFA antenna 2.23dBi(max.) For E-UTRA Band 2 0.24dBi(max.) For E-UTRA Band 5 2.23dBi(max.) For E-UTRA Band 7
13.56MHz RFID	
Operation frequency:	13.56MHz
Modulation :	ASK
No. of Channel :	1
Antenna type:	PIFA antenna
Antenna gain:	0.85 dBi
Category of device:	Portable device
Remark: The above DUT's information was declared by manufacturer. Please refer to the specifications or user's manual for more detailed description.	

2.3 Device Category and SAR Limits

This device belongs to portable device category because its radiating structure is allowed to be used within 20 centimeters of the body of the user. Limit for General Population/Uncontrolled exposure should be applied for this device, it is 1.6 W/kg as averaged over any 1 gram of tissue.

2.4 Applied Standard

The Specific Absorption Rate (SAR) testing specification, method, and procedure for this device is in accordance with the following standards:

FCC 47CFR §2.1093	Radiofrequency Radiation Exposure Evaluation: Portable Devices
ANSI/IEEE C95.1-2019	IEEE Standard for Safety Levels with Respect to Human Exposure to Radio Frequency Electromagnetic Fields, 3 kHz – 300 GHz.
IEEE 1528-2013	Recommended Practice for Determining the Peak Spatial-Average Specific Absorption Rate (SAR) in the Human Head from Wireless Communications Devices: Measurement Techniques
KDB 941225 D01	3G SAR Measurement Procedures v03r01
KDB 941225 D05	SAR for LTE Devices v02r05
KDB 941225 D06	Hotspot Mode SAR v02r01
KDB 248227 D01	SAR Guidance for IEEE 802.11 Wi-Fi SAR v02r02
KDB 648474 D04	Handset SAR v01r03
KDB 447498 D01	General RF Exposure Guidance v06
KDB 865664 D01	SAR Measurement 100 MHz to 6 GHz v01r04
KDB 865664 D02	RF Exposure Reporting v01r02
KDB 690783 D01	SAR Listings on Grants v01r03

2.5 Test Facility

FCC-Registration No.: 517856 Designation Number: CN1318

Shenzhen CTA Testing Technology Co., Ltd. has been listed on the US Federal Communications Commission list of test facilities recognized to perform electromagnetic emissions measurements.

A2LA-Lab Cert. No.: 6534.01

Shenzhen CTA Testing Technology Co., Ltd. has been listed by American Association for Laboratory Accreditation to perform electromagnetic emission measurement.

ISED#: 27890 CAB identifier: CN0127

Shenzhen CTA Testing Technology Co., Ltd. has been listed by Innovation, Science and Economic Development Canada to perform electromagnetic emission measurement.

The 3m-Semi anechoic test site fulfils CISPR 16-1-4 according to ANSI C63.10 and CISPR 16-1-4:2010.

2.6 Environment of Test Site

Items	Required	Actual
Temperature (°C)	18-25	22~23
Humidity (%RH)	30-70	55~65

2.7 Test Configuration

The device was controlled by using a base station emulator. Communication between the device and the emulator was established by air link. The distance between the EUT and the antenna of the emulator is larger than 50 cm and the output power radiated from the emulator antenna is at least 30 dB smaller than the output power of EUT. The EUT was set from the emulator to radiate maximum output power during all tests. For WLAN SAR testing, WLAN engineering testing software installed on the EUT can provide continuous transmitting RF signal.

3 Specific Absorption Rate (SAR)

3.1 Introduction

SAR is related to the rate at which energy is absorbed per unit mass in an object exposed to a radio field. The SAR distribution in a biological body is complicated and is usually carried out by experimental techniques or numerical modeling. The standard recommends limits for two tiers of groups, occupational/controlled and general population/uncontrolled, based on a person's awareness and ability to exercise control over his or her exposure. In general, occupational/controlled exposure limits are higher than the limits for general population/uncontrolled.

3.2 SAR Definition

The SAR definition is the time derivative (rate) of the incremental energy (dW) absorbed by (dissipated in) an incremental mass (dm) contained in a volume element (dv) of a given density (ρ). The equation description is as below:

$$SAR = \frac{d}{dt} \left(\frac{dW}{dm} \right) = \frac{d}{dt} \left(\frac{dW}{\rho dv} \right)$$

SAR is expressed in units of Watts per kilogram (W/kg)

SAR measurement can be either related to the temperature elevation in tissue by

$$SAR = C \left(\frac{\delta T}{\delta t} \right)$$

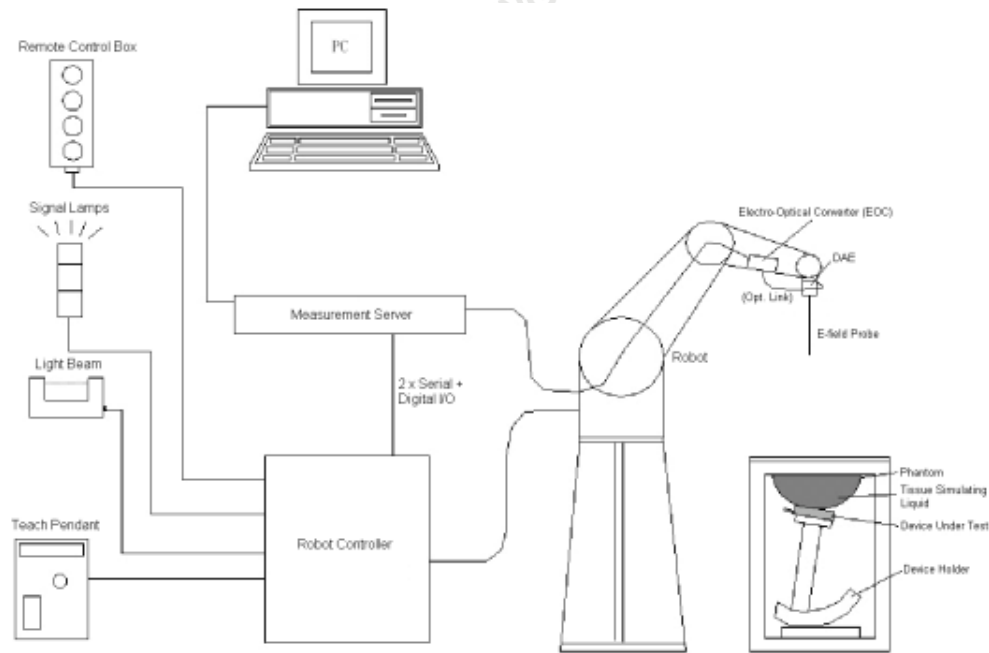
Where: C is the specific heat capacity, δT is the temperature rise and δt is the exposure duration, or related to the electrical field in the tissue by

$$SAR = \frac{\sigma |E|^2}{\rho}$$

Where: σ is the conductivity of the tissue, ρ is the mass density of the tissue and E is the RMS electrical field strength.

However for evaluating SAR of low power transmitter, electrical field measurement is typically applied.

4 SAR Measurement System



DASY System Configurations

The DASY system for performance compliance tests is illustrated above graphically. This system consists of the following items:

- A standard high precision 6-axis robot with controller, a teach pendant and software
- A data acquisition electronic (DAE) attached to the robot arm extension
- A dosimetric probe equipped with an optical surface detector system
- The electro-optical converter (EOC) performs the conversion between optical and electrical signals
- A measurement server performs the time critical tasks such as signal filtering, control of the robot operation and fast movement interrupts.
- A probe alignment unit which improves the accuracy of the probe positioning
- A computer operating Windows XP
- DASY software
- Remote control with teach pendant and additional circuitry for robot safety such as warning lamps, etc.
- The SAM twin phantom
- A device holder
- Tissue simulating liquid
- Dipole for evaluating the proper functioning of the system


components are described in details in the following sub-sections.

4.1 E-Field Probe

The SAR measurement is conducted with the dosimetric probe (manufactured by SPEAG). The probe is specially designed and calibrated for use in liquid with high permittivity. The dosimetric probe has special calibration in liquid at different frequency. This probe has a built in optical surface detection system to prevent from collision with phantom.

➤ E-Field Probe Specification

<EX3DV4 Probe>

Construction	Symmetrical design with triangular core Built-in shielding against static charges PEEK enclosure material (resistant to organic solvents, e.g., DGBE)	 Photo of EX3DV4
Frequency	10 MHz to 6 GHz; Linearity: ± 0.2 dB	
Directivity	± 0.3 dB in HSL (rotation around probe axis) ± 0.5 dB in tissue material (rotation normal to probe axis)	
Dynamic Range	10 μ W/g to 100 W/kg; Linearity: ± 0.2 dB (noise: typically < 1 μ W/g)	
Dimensions	Overall length: 330 mm (Tip: 20 mm) Tip diameter: 2.5 mm (Body: 12 mm) Typical distance from probe tip to dipole centers: 1 mm	

➤ E-Field Probe Calibration

Each probe needs to be calibrated according to a dosimetric assessment procedure with accuracy better than $\pm 10\%$. The spherical isotropy shall be evaluated and within ± 0.25 dB. The sensitivity parameters (NormX, NormY, and NormZ), the diode compression parameter (DCP) and the conversion factor (ConvF) of the probe are tested. The calibration data can be referred to appendix C of this report.

4.2 Data Acquisition Electronics (DAE)

The data acquisition electronics (DAE) consists of a highly sensitive electrometer-grade preamplifier with auto-zeroing, a channel and gain-switching multiplexer, a fast 16 bit AD-converter and a command decoder and control logic unit. Transmission to the measurement server is accomplished through an optical downlink for data and status information as well as an optical uplink for commands and the clock. The input impedance of the DAE is 200M Ω ; the inputs are symmetrical and floating. Common mode rejection is above 80dB.



Photo of DAE

4.3 Robot

The SPEAG DASY system uses the high precision robots (DASY5: TX60XL) type from Stäubli SA (France). For the 6-axis controller system, the robot controller version (DASY5: CS8c) from Stäubli is used. The Stäubli robot series have many features that are important for our application:

- High precision (repeatability ± 0.035 mm)
- High reliability (industrial design)
- Jerk-free straight movements
- Low ELF interference (the closed metallic construction shields against motor control fields)



Photo of DASY5

4.4 Measurement Server

The measurement server is based on a PC/104 CPU board with CPU (DASY5: 400 MHz, Intel Celeron), chipdisk (DASY5: 128 MB), RAM (DASY5: 128 MB). The necessary circuits for communication with the DAE electronic box, as well as the 16 bit AD converter system for optical detection and digital I/O interface are contained on the DASY I/O board, which is directly connected to the PC/104 bus of the CPU board.

The measurement server performs all the real-time data evaluation for field measurements and surface detection, controls robot movements and handles safety operations.



Photo of Server for DASY5

4.5 Phantom

<SAM Twin Phantom>

Shell Thickness	2 ± 0.2 mm; Center ear point: 6 ± 0.2 mm
Filling Volume	Approx. 25 liters
Dimensions	Length: 1000 mm; Width: 500 mm; Height: adjustable feet
Measurement Areas	Left Hand, Right Hand, Flat Phantom



Photo of SAM Phantom

The bottom plate contains three pair of bolts for locking the device holder. The device holder positions are adjusted to the standard measurement positions in the three sections. A white cover is provided to tap the phantom during off-periods to prevent water evaporation and changes in the liquid parameters. On the phantom top, three reference markers are provided to identify the phantom position with respect to the robot.

<ELI4 Phantom>

Shell Thickness	2 ± 0.2 mm (sagging: <1%)
Filling Volume	Approx. 30 liters
Dimensions	Major ellipse axis: 600 mm Minor axis: 400 mm

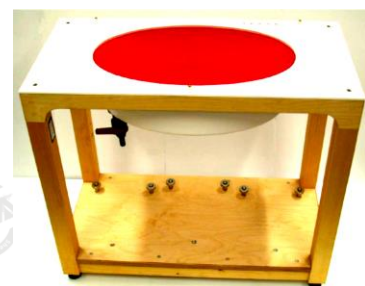


Photo of ELI4 Phantom

The ELI4 phantom is intended for compliance testing of handheld and body-mounted wireless devices in the frequency range of 30 MHz to 6 GHz. ELI4 is fully compatible with standard and all known tissue simulating liquids.

4.6 Device Holder

The SAR in the phantom is approximately inversely proportional to the square of the distance between the source and the liquid surface. For a source at 5 mm distance, a positioning uncertainty of ±0.5mm would produce a SAR uncertainty of ± 20%. Accurate device positioning is therefore crucial for accurate and repeatable measurements. The positions in which the devices must be measured are defined by the standards.

The DASY device holder is designed to cope with different positions given in the standard. It has two scales for the device rotation (with respect to the body axis) and the device inclination (with respect to the line between the ear reference points). The rotation center for both scales is the ear reference point (ERP). Thus the device needs no repositioning when changing the angles.

The DASY device holder is constructed of low-loss POM material having the following dielectric parameters: relative permittivity $\epsilon = 3$ and loss tangent $\delta = 0.02$. The amount of dielectric material has been reduced in the closest vicinity of the device, since measurements have suggested that the influence of the clamp on the test results could thus be lowered.



Device Holder

4.7 Data Storage and Evaluation

➤ Data Storage

The DASY software stores the assessed data from the data acquisition electronics as raw data (in microvolt readings from the probe sensors), together with all the necessary software parameters for the data evaluation (probe calibration data, liquid parameters and device frequency and modulation data) in measurement files. The post-processing software evaluates the desired unit and format for output each time the data is visualized or exported. This allows verification of the complete software setup even after the measurement and allows correction of erroneous parameter settings. For example, if a measurement has been performed with an incorrect crest factor parameter in the device setup, the parameter can be corrected afterwards and the data can be reevaluated.

The measured data can be visualized or exported in different units or formats, depending on the selected probe type (e.g., [V/m], [A/m], [W/kg]). Some of these units are not available in certain situations or give meaningless results, e.g., a SAR-output in a non-loss media, will always be zero. Raw data can also be exported to perform the evaluation with other software packages.

➤ Data Evaluation

The DASY post-processing software (SEMCAD) automatically executes the following procedures to calculate the field units from the microvolt readings at the probe connector. The parameters used in the evaluation are stored in the configuration modules of the software:

Probe parameters:	- Sensitivity	Norm _i , a _{i0} , a _{i1} , a _{i2}
	- Conversion factor	ConvF _i
	- Diode compression point	dcp _i
Device parameters:	- Frequency	f
	- Crest factor	cf
Media parameters:	- Conductivity	σ
	- Density	ρ

These parameters must be set correctly in the software. They can be found in the component documents or they can be imported into the software from the configuration files issued for the DASY components. In the direct measuring mode of the multi-meter option, the parameters of the actual system setup are used. In the scan visualization and export modes, the parameters stored in the corresponding document files are used.

The first step of the evaluation is a linearization of the filtered input signal to account for the compression characteristics of the detector diode. The compensation depends on the input signal, the diode type and the DC-transmission factor from the diode to the evaluation electronics. If the exciting field is pulsed, the crest factor of the signal must be known to correctly compensate for peak power.

The formula for each channel can be given as:

$$V_i = U_i + U_i^2 \cdot \frac{cf}{dcp_i}$$

with V_i = compensated signal of channel i, (i = x, y, z)

U_i = input signal of channel i, (i = x, y, z)

cf = crest factor of exciting field (DASY parameter)

dcp_i = diode compression point (DASY parameter)

From the compensated input signals, the primary field data for each channel can be evaluated:

$$\text{E-field Probes: } E_i = \sqrt{\frac{V_i}{\text{Norm}_i \cdot \text{ConvF}}}$$

$$\text{H-field Probes: } H_i = \sqrt{V_i} \cdot \frac{a_{i0} + a_{i1}f + a_{i2}f^2}{f}$$

with V_i = compensated signal of channel i, (i = x, y, z)

Norm_i = sensor sensitivity of channel i, (i = x, y, z), $\mu\text{V}/(\text{V/m})^2$ for E-field Probes

ConvF = sensitivity enhancement in solution

a_{ij} = sensor sensitivity factors for H-field probes

f = carrier frequency [GHz]

E_i = electric field strength of channel i in V/m

H_i = magnetic field strength of channel i in A/m

The RSS value of the field components gives the total field strength (Hermitian magnitude):

$$E_{\text{tot}} = \sqrt{E_x^2 + E_y^2 + E_z^2}$$

The primary field data are used to calculate the derived field units.

$$\text{SAR} = E_{\text{tot}}^2 \cdot \frac{\sigma}{\rho \cdot 1000}$$

with SAR = local specific absorption rate in W/kg

E_{tot} = total field strength in V/m

σ = conductivity in [mho/m] or [Siemens/m]

ρ = equivalent tissue density in g/cm³

Note that the density is set to 1, to account for actual head tissue density rather than the density of the tissue simulating liquid.

5 Test Equipment List

Manufacturer	Name of Equipment	Type/Model	Serial Number	Calibration	
				Last Cal.	Due Date
SPEAG	835MHz System Validation Kit	D835V2	484	Aug. 25,2023	Aug. 24,2026
SPEAG	1900MHz System Validation Kit	D1900V2	5d002	Aug. 25,2023	Aug. 24,2026
SPEAG	2450MHz System Validation Kit	D2450V2	745	Aug. 28,2023	Aug. 27,2026
SPEAG	2600MHz System Validation Kit	D2600V2	1073	Feb. 17,2023	Feb. 16,2026
Rohde & Schwarz	UNIVERSAL RADIO COMMUNICATION TESTER	CMW500	1201.0002K50-104209-JC	Aug.25, 2024	Aug.24, 2025
SPEAG	Data Acquisition Electronics	DAE4	1315	Sep.19,2024	Sep.18,2025
SPEAG	Dosimetric E-Field Probe	EX3DV4	3842	Sep.19,2024	Sep.18,2025
Agilent	ENA Series Network Analyzer	E5071C	MY46317418	Aug.25, 2024	Aug.24, 2025
SPEAG	DAK	DAK-3.5	1226	Aug.25, 2024	Aug.24, 2025
SPEAG	SAM Twin Phantom	QD000P40CD	1802	NA1	NA1
SPEAG	ELI Phantom	QDOVA004AA	2058	NA1	NA1
AR	Amplifier	ZHL-42W	QA1118004	Aug.25, 2024	Aug.24, 2025
Agilent	Power Meter	N1914A	MY50001102	Aug.25, 2024	Aug.24, 2025
Agilent	Power Sensor	N8481H	MY51240001	Aug.25, 2024	Aug.24, 2025
R&S	Spectrum Analyzer	N9020A	MY51170037	Aug.25, 2024	Aug.24, 2025
Agilent	Signal Generation	N5182A	MY48180656	Aug.25, 2024	Aug.24, 2025
Worken	Directional Coupler	0110A05601O-10	COM5BNW1A2	Aug.25, 2024	Aug.24, 2025

Note:

1. The calibration certificate of DASY can be referred to appendix C of this report.
2. The dipole calibration interval can be extended to 3 years with justification. The dipoles are also not physically damaged, or repaired during the interval.
3. The Insertion Loss calibration of Dual Directional Coupler and Attenuator were characterized via the network analyzer and compensated during system check.
4. The dielectric probe kit was calibrated via the network analyzer, with the specified procedure (calibrated in pure water) and calibration kit (standard) short circuit, before the dielectric measurement. The specific procedure and calibration kit are provided by Agilent.
5. In system check we need to monitor the level on the power meter, and adjust the power amplifier level to have precise power level to the dipole; the measured SAR will be normalized to 1W input power according to the ratio of 1W to the input power to the dipole. For system check, the calibration of the power amplifier is deemed not critically required for correct measurement; the power meter is critical and we do have calibration for it
6. "1" : NA as this is not measurement equipment.

6 Tissue Simulating Liquids

For the measurement of the field distribution inside the SAM phantom with DASY, the phantom must be filled with around 25 liters of homogeneous body tissue simulating liquid. For head SAR testing, the liquid height from the ear reference point (ERP) of the phantom to the liquid top surface is larger than 15 cm, which is shown in Fig. 6.1. For body SAR testing, the liquid height from the center of the flat phantom to the liquid top surface is larger than 15 cm, which is shown as followed:



Photo of Liquid Height

The following table gives the recipes for tissue simulating liquid.

Ingredients (% by weight)	Frequency (MHz)				
	450	700-900	1750-2000	2300-2500	2500-2700
Water	38.56	40.30	55.24	55.00	54.92
Salt (NaCl)	3.95	1.38	0.31	0.2	0.23
Sucrose	56.32	57.90	0	0	0
HEC	0.98	0.24	0	0	0
Bactericide	0.19	0.18	0	0	0
Tween	0	0	44.45	44.80	44.85
Salt: 99+% Pure Sodium Chloride Water: De-ionized, 16 MΩ+ resistivity Tween: Polyoxyethylene (20) sorbitan monolaurate Sucrose: 98+% Pure Sucrose HEC: Hydroxyethyl Cellulose					
HSL5GHz is composed of the following ingredients: Water: 50-65% Mineral oil: 10-30% Emulsifiers: 8-25% Sodium salt: 0-1.5%					

The following table shows the measuring results for simulating liquid.

Measured Frequency (MHz)	Target Tissue		Measured Tissue				Liquid Temp.	Test Data
	ϵ_r	σ	ϵ_r	Dev. (%)	σ	Dev. (%)		
835	41.5	0.9	42.336	2.01%	0.892	-0.89%	22.5	12/10/2024
1900	40.0	1.40	41.187	2.97%	1.375	-1.79%	22.6	12/12/2024
2450	39.2	1.80	40.118	2.34%	1.793	-0.39%	23.5	12/17/2024
2600	39.0	1.96	38.843	-0.40%	2.032	3.67%	22.6	12/19/2024

7 System Verification Procedures

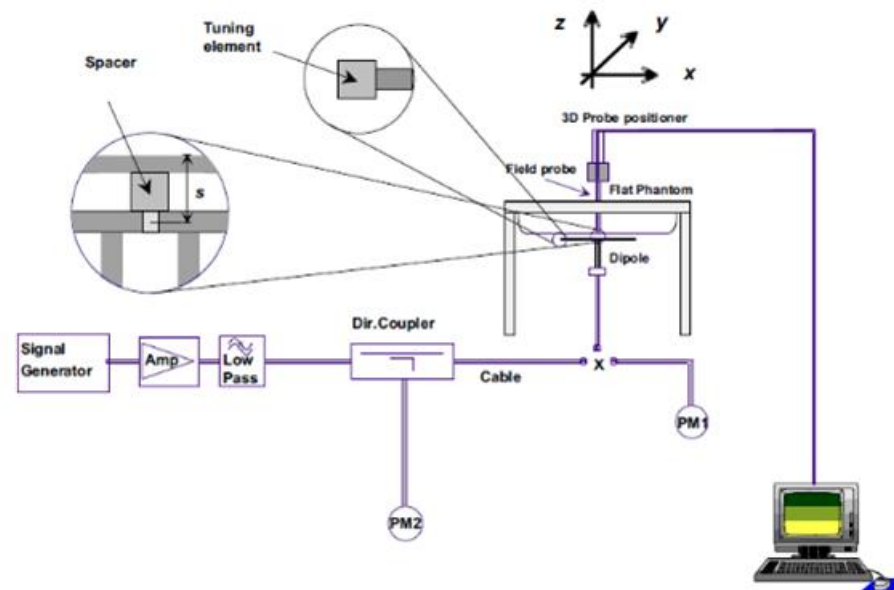
Each DASY system is equipped with one or more system validation kits. These units, together with the predefined measurement procedures within the DASY software, enable the user to conduct the system performance check and system validation. System validation kit includes a dipole, tripod holder to fix it underneath the flat phantom and a corresponding distance holder.

➤ Purpose of System Performance check

The system performance check verifies that the system operates within its specifications. System and operator errors can be detected and corrected. It is recommended that the system performance check be performed prior to any usage of the system in order to guarantee reproducible results. The system performance check uses normal SAR measurements in a simplified setup with a well characterized source. This setup was selected to give a high sensitivity to all parameters that might fail or vary over time. The system check does not intend to replace the calibration of the components, but indicates situations where the system uncertainty is exceeded due to drift or failure.

➤ System Setup

In the simplified setup for system evaluation, the EUT is replaced by a calibrated dipole and the power source is replaced by a continuous wave that comes from a signal generator. The calibrated dipole must be placed beneath the flat phantom section of the SAM twin phantom with the correct distance holder. The distance holder should touch the phantom surface with a light pressure at the reference marking and be oriented parallel to the long side of the phantom. The equipment setup is shown below:



System Setup for System Evaluation

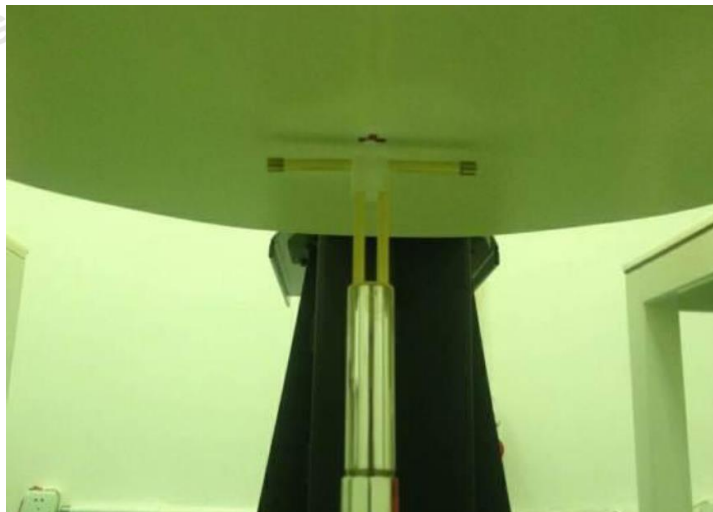


Photo of Dipole Setup

➤ Validation Results

Comparing to the original SAR value provided by SPEAG, the verification data should be within its specification of 10%. The table below shows the target SAR and measured SAR after normalized to 1W input power. It indicates that the system performance check can meet the variation criterion and the plots can be referred to Appendix B of this report.

Date	Frequency (MHz)	Power fed onto reference dipole (mW)	Targeted SAR 1g (W/kg)	Measured SAR1g (W/kg)	Normalized SAR (W/kg)	Deviation (%)
12/10/2024	835	125	9.68	1.15	9.20	-4.96%
12/12/2024	1900	125	40.1	5.38	43.04	7.33%
12/17/2024	2450	125	52.7	7.11	56.88	7.93%
12/19/2024	2600	125	56.8	6.85	54.80	-3.52%

8 EUT Testing Position

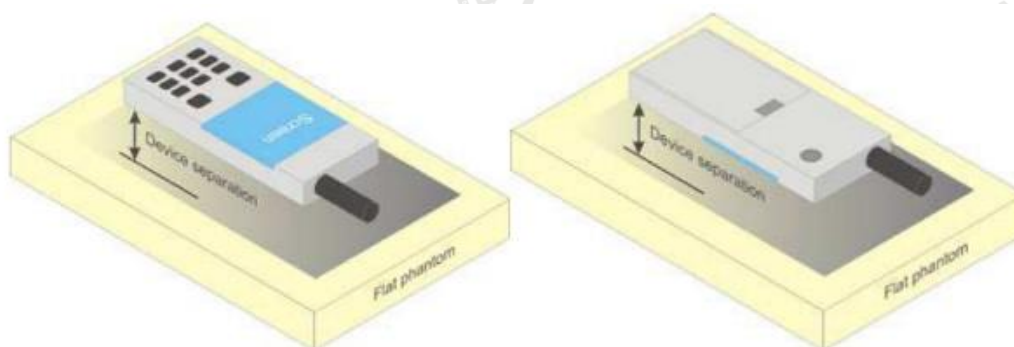
8.1 Body-worn accessory exposure conditions

Body-worn operating configurations should be tested with the belt-clips and holsters attached to the device and positioned against a flat phantom in normal use configurations.

Body-worn operating configurations are tested with the belt-clips and holsters attached to the device and positioned against a flat phantom in a normal use configuration. Per FCC KDB Publication 648474 D04, Body-worn accessory exposure is typically related to voice mode operations when handsets are carried in body-worn accessories. The body-worn accessory procedures in FCC KDB Publication 447498 D01 should be used to test for body-worn accessory SAR compliance, without a headset connected to it. This enables the test results for such configuration to be compatible with that required for hotspot mode when the body-worn accessory test separation distance is greater than or equal to that required for hotspot mode, when applicable. When the reported SAR for a body-worn accessory, measured without a headset connected to the handset, is $> 1.2 \text{ W/kg}$, the highest reported SAR configuration for that wireless mode and frequency band should be repeated for that body-worn accessory with a headset attached to the handset.

Accessories for Body-worn operation configurations are divided into two categories: those that do not contain metallic components and those that do contain metallic components. When multiple accessories that do not contain metallic components are supplied with the device, the device is tested with only the accessory that dictates the closest spacing to the body. Then multiple accessories that contain metallic components are tested with the device with each accessory. If multiple accessories share an identical metallic component (i.e. the same metallic belt-clip used with different holsters with no other metallic components) only the accessory that dictates the closest spacing to the body is tested.

Body-worn accessories may not always be supplied or available as options for some devices intended to be authorized for body-worn use. In this case, a test configuration with a separation distance between the back of the device and the flat phantom is used. Test position spacing was documented. Transmitters that are designed to operate in front of a person's face, as in push-to-talk configurations, are tested for SAR compliance with the front of the device positioned to face the flat phantom in head fluid. For devices that are carried next to the body such as a shoulder, waist or chest-worn transmitters, SAR compliance is tested with the accessories, including headsets and microphones, attached to the device and positioned against a flat phantom in a normal use configuration.



F-1. Test positions for body-worn devices

9 Measurement Procedures

The measurement procedures are as follows:

- (a) Use base station simulator (if applicable) or engineering software to transmit RF power continuously (continuous Tx) in the middle channel.
- (b) Keep EUT to radiate maximum output power or 100% duty factor (if applicable)
- (c) Measure output power through RF cable and power meter.
- (d) Place the EUT in the positions as setup photos demonstrates.
- (e) Set scan area, grid size and other setting on the DASY software.
- (f) Measure SAR transmitting at the middle channel for all applicable exposure positions.
- (g) Identify the exposure position and device configuration resulting the highest SAR
- (h) Measure SAR at the lowest and highest channels at the worst exposure position and device configuration if applicable.

According to the test standard, the recommended procedure for assessing the peak spatial-average SAR value consists of the following steps:

- (a) Power reference measurement
- (b) Area scan
- (c) Zoom scan
- (d) Power drift measurement

9.1 Spatial Peak SAR Evaluation

The procedure for spatial peak SAR evaluation has been implemented according to the test standard. It can be conducted for 1g and 10g, as well as for user-specific masses. The DASY software includes all numerical procedures necessary to evaluate the spatial peak SAR value.

The base for the evaluation is a "cube" measurement. The measured volume must include the 1g and 10g cubes with the highest averaged SAR values. For that purpose, the center of the measured volume is aligned to the interpolated peak SAR value of a previously performed area scan.

The entire evaluation of the spatial peak values is performed within the post-processing engine (SEMCAD). The system always gives the maximum values for the 1g and 10g cubes. The algorithm to find the cube with highest averaged SAR is divided into the following stages:

- (a) Extraction of the measured data (grid and values) from the Zoom Scan
- (b) Calculation of the SAR value at every measurement point based on all stored data (A/D values and measurement parameters)
- (c) Generation of a high-resolution mesh within the measured volume
- (d) Interpolation of all measured values from the measurement grid to the high-resolution grid
- (e) Extrapolation of the entire 3-D field distribution to the phantom surface over the distance from sensor to surface
- (f) Calculation of the averaged SAR within masses of 1g and 10g

9.2 Power Reference Measurement

The Power Reference Measurement and Power Drift Measurements are for monitoring the power drift of the device under test in the batch process. The minimum distance of probe sensors to surface determines the closest measurement point to phantom surface. This distance cannot be smaller than the distance of sensor calibration points to probe tip as defined in the probe properties.

9.3 Area Scan Procedures

The area scan is used as a fast scan in two dimensions to find the area of high field values, before doing a fine measurement around the hot spot. The sophisticated interpolation routines implemented in DASY software can find the maximum found in the scanned area, within a range of the global maximum. The range (in dB) is specified in the standards for compliance testing. For example, a 2 dB range is required in IEEE standard 1528 and IEC 62209 standards, whereby 3 dB is a requirement when compliance is assessed in accordance with the ARIB standard (Japan), if only one zoom scan follows the area scan, then only the absolute maximum will be taken as reference. For cases where multiple maximums are detected, the number of zoom scans has to be increased accordingly.

Area scan parameters extracted from FCC KDB 865664 D01 SAR measurement 100 MHz to 6 GHz.

	≤ 3 GHz	> 3 GHz
Maximum distance from closest measurement point (geometric center of probe sensors) to phantom surface	5 mm ± 1 mm	$\frac{1}{2} \cdot \delta \cdot \ln(2)$ mm ± 0.5 mm
Maximum probe angle from probe axis to phantom surface normal at the measurement location	30° ± 1°	20° ± 1°
Maximum area scan spatial resolution: Δx_{Area} , Δy_{Area}	≤ 2 GHz: ≤ 15 mm 2 – 3 GHz: ≤ 12 mm	3 – 4 GHz: ≤ 12 mm 4 – 6 GHz: ≤ 10 mm
	When the x or y dimension of the test device, in the measurement plane orientation, is smaller than the above, the measurement resolution must be ≤ the corresponding x or y dimension of the test device with at least one measurement point on the test device.	

9.4 Zoom Scan Procedures

Zoom scans are used to assess the peak spatial SAR values within a cubic averaging volume containing 1 gram and 10 gram of simulated tissue. The zoom scan measures points (refer to table below) within a cube whose base faces are centered on the maxima found in a preceding area scan job within the same procedure. When the measurement is done, the zoom scan evaluates the averaged SAR for 1 gram and 10 gram and displays these values next to the job's label.

Zoom scan parameters extracted from FCC KDB 865664 D01 SAR measurement 100 MHz to 6 GHz.

			≤ 3 GHz	> 3 GHz
Maximum zoom scan spatial resolution: Δx_{Zoom} , Δy_{Zoom}			≤ 2 GHz: ≤ 8 mm 2 – 3 GHz: ≤ 5 mm*	3 – 4 GHz: ≤ 5 mm* 4 – 6 GHz: ≤ 4 mm*
Maximum zoom scan spatial resolution, normal to phantom surface	uniform grid: $\Delta z_{\text{Zoom}}(n)$		≤ 5 mm	3 – 4 GHz: ≤ 4 mm 4 – 5 GHz: ≤ 3 mm 5 – 6 GHz: ≤ 2 mm
	graded grid	$\Delta z_{\text{Zoom}}(1)$: between 1 st two points closest to phantom surface	≤ 4 mm	3 – 4 GHz: ≤ 3 mm 4 – 5 GHz: ≤ 2.5 mm 5 – 6 GHz: ≤ 2 mm
		$\Delta z_{\text{Zoom}}(n>1)$: between subsequent points	$\leq 1.5 \cdot \Delta z_{\text{Zoom}}(n-1)$ mm	
Minimum zoom scan volume	x, y, z		≥ 30 mm	3 – 4 GHz: ≥ 28 mm 4 – 5 GHz: ≥ 25 mm 5 – 6 GHz: ≥ 22 mm
Note: δ is the penetration depth of a plane-wave at normal incidence to the tissue medium; see IEEE Std 1528-2013 for details.				
* When zoom scan is required and the <i>reported</i> SAR from the <i>area scan based 1-g SAR estimation</i> procedures of KDB Publication 447498 is ≤ 1.4 W/kg, ≤ 8 mm, ≤ 7 mm and ≤ 5 mm zoom scan resolution may be applied, respectively, for 2 GHz to 3 GHz, 3 GHz to 4 GHz and 4 GHz to 6 GHz.				

9.5 Volume Scan Procedures

The volume scan is used for assess overlapping SAR distributions for antennas transmitting in different frequency bands. It is equivalent to an oversized zoom scan used in standalone measurements. The measurement volume will be used to enclose all the simultaneous transmitting antennas. For antennas transmitting simultaneously in different frequency bands, the volume scan is measured separately in each frequency band. In order to sum correctly to compute the 1g aggregate SAR, the EUT remain in the same test position for all measurements and all volume scan use the same spatial resolution and grid spacing. When all volume scan were completed, the software, SEMCAD postprocessor can combine and subsequently superpose these measurement data to calculating the multiband SAR.

9.6 Power Drift Monitoring

All SAR testing is under the EUT install full charged battery and transmit maximum output power. In DASY measurement software, the power reference measurement and power drift measurement procedures are used for monitoring the power drift of EUT during SAR test. Both these procedures measure the field at a specified reference position before and after the SAR testing. The software will calculate the field difference in dB. If the power drift more than 5%, the SAR will be retested.

10 TEST CONDITIONS AND RESULTS

10.1 Conducted Power Results

<GSM Conducted power>

Band GSM850		Burst Average Power (dBm)			Frame-Average Power (dBm)		
TX Channel	Tune-up limit (dBm)	128	190	251	128	190	251
Frequency (MHz)		824.2	836.6	848.8	824.2	836.6	848.6
GSM	33.00	32.91	32.93	32.59	23.72	23.74	23.40
GPRS (GMSK, 1 Tx slot)	33.00	32.58	32.55	32.16	23.39	23.36	22.97
GPRS (GMSK, 2 Tx slots)	32.00	31.63	31.27	31.43	25.45	25.09	25.25
GPRS (GMSK, 3 Tx slots)	30.50	29.43	30.17	29.20	25.01	25.75	24.78
GPRS (GMSK, 4 Tx slots)	28.50	27.69	28.02	27.49	24.52	24.85	24.32
Band PCS1900		Burst Average Power (dBm)			Frame-Average Power (dBm)		
TX Channel	Tune-up limit (dBm)	512	661	810	512	661	810
Frequency (MHz)		1850.2	1880.0	1909.8	1850.2	1880.0	1909.8
GSM	30.00	29.67	29.87	29.81	20.48	20.68	20.62
GPRS (GMSK, 1 Tx slot)	30.00	29.46	29.39	29.61	20.27	20.20	20.42
GPRS (GMSK, 2 Tx slots)	29.50	28.78	27.89	29.05	22.60	21.71	22.87
GPRS (GMSK, 3 Tx slots)	27.00	26.98	26.77	26.34	22.56	22.35	21.92
GPRS (GMSK, 4 Tx slots)	26.50	25.46	25.73	26.01	22.29	22.56	22.84
Remark: The frame-averaged power is linearly scaled the maximum burst averaged power over 8 time slots. The calculated method are shown as below: Frame-averaged power = Maximum burst averaged power (1 Tx Slot) – 9.03 dB Frame-averaged power = Maximum burst averaged power (2 Tx Slots) – 6.02 dB Frame-averaged power = Maximum burst averaged power (3 Tx Slots) - 4.26 dB Frame-averaged power = Maximum burst averaged power (4 Tx Slots) – 3.01 dB							

Note:

1. Per KDB 447498 D01, the maximum output power channel is used for SAR testing and for further SAR test reduction
2. For Data mode SAR testing, GPRS should be evaluated, therefore the EUT was set in corresponding TX slots due to its highest frame-average power.

<WCDMA Conducted Power>

The following tests were conducted according to the test requirements outlines in 3GPP TS 34.121 specification.
A summary of these settings are illustrated below:

HSDPA Setup Configuration:

- a. The EUT was connected to Base Station Agilent E5515C referred to the Setup Configuration.
- b. The RF path losses were compensated into the measurements.
- c. A call was established between EUT and Base Station with following setting:
 - i. Set Gain Factors (β_c and β_d) and parameters were set according to each
 - ii. Specific sub-test in the following table, C10.1.4, quoted from the TS 34.121
 - iii. Set RMC 12.2Kbps + HSDPA mode.
 - iv. Set Cell Power = -86 dBm
 - v. Set HS-DSCH Configuration Type to FRC (H-set 1, QPSK)
 - vi. Select HSDPA Uplink Parameters
 - vii. Set Delta ACK, Delta NACK and Delta CQI = 8
 - viii. Set Ack-Nack Repetition Factor to 3
 - ix. Set CQI Feedback Cycle (k) to 4 ms
 - x. Set CQI Repetition Factor to 2
 - xi. Power Ctrl Mode = All Up bits
- d. The transmitted maximum output power was recorded.

Table C.10.1.4: β values for transmitter characteristics tests with HS-DPCCH

Sub-test	β_c	β_d	β_d (SF)	β_c/β_d	β_{hs} (Note 1, Note 2)	CM (dB) (Note 3)	MPR (dB) (Note 3)
1	2/15	15/15	64	2/15	4/15	0.0	0.0
2	12/15 (Note 4)	15/15 (Note 4)	64	12/15 (Note 4)	24/15	1.0	0.0
3	15/15	8/15	64	15/8	30/15	1.5	0.5
4	15/15	4/15	64	15/4	30/15	1.5	0.5
<p>Note 1: Δ_{ACK}, Δ_{NACK} and $\Delta_{CQI} = 30/15$ with $\beta_{hs} = 30/15 * \beta_c$.</p> <p>Note 2: For the HS-DPCCH power mask requirement test in clause 5.2C, 5.7A, and the Error Vector Magnitude (EVM) with HS-DPCCH test in clause 5.13.1A, and HSDPA EVM with phase discontinuity in clause 5.13.1AA, Δ_{ACK} and $\Delta_{NACK} = 30/15$ with $\beta_{hs} = 30/15 * \beta_c$, and $\Delta_{CQI} = 24/15$ with $\beta_{hs} = 24/15 * \beta_c$.</p> <p>Note 3: CM = 1 for $\beta_c/\beta_d = 12/15$, $\beta_{hs}/\beta_c = 24/15$. For all other combinations of DPDCH, DPCCH and HS-DPCCH the MPR is based on the relative CM difference. This is applicable for only UEs that support HSDPA in release 6 and later releases.</p> <p>Note 4: For subtest 2 the β_c/β_d ratio of 12/15 for the TFC during the measurement period (TF1, TF0) is achieved by setting the signalled gain factors for the reference TFC (TF1, TF1) to $\beta_c = 11/15$ and $\beta_d = 15/15$.</p>							

Setup Configuration

HSUPA Setup Configuration:

- a. The EUT was connected to Base Station Agilent E5515C referred to the Setup Configuration.
- b. The RF path losses were compensated into the measurements.
- c. A call was established between EUT and Base Station with following setting * :
 - i. Call Configs = 5.2B, 5.9B, 5.10B, and 5.13.2B with QPSK
 - ii. Set the Gain Factors (β_c and β_d) and parameters (AG Index) were set according to each specific sub-test in the following table, C11.1.3, quoted from the TS 34.121
 - iii. Set Cell Power = -86 dBm
 - iv. Set Channel Type = 12.2k + HSPA
 - v. Set UE Target Power
 - vi. Power Ctrl Mode= Alternating bits
 - vii. Set and observe the E-TFCI
 - viii. Confirm that E-TFCI is equal to the target E-TFCI of 75 for sub-test 1, and other subtest's E-TFCI
- d. The transmitted maximum output power was recorded.

Table C.11.1.3: β values for transmitter characteristics tests with HS-DPCCH and E-DCH

Sub-test	β_c	β_d	β_d (SF)	β_c/β_d	β_{HS} (Note 1)	β_{ec}	β_{ed} (Note 5) (Note 6)	β_{ed} (SF)	β_{ed} (Codes)	CM (dB) (Note 2)	MPR (dB) (Note 2)	AG Index (Note 6)	E-TFCI
1	11/15 (Note 3)	15/15 (Note 3)	64	11/15 (Note 3)	22/15	209/225	1309/225	4	1	1.0	0.0	20	75
2	6/15	15/15	64	6/15	12/15	12/15	94/75	4	1	3.0	2.0	12	67
3	15/15	9/15	64	15/9	30/15	30/15	β_{ed1} : 47/15 β_{ed2} : 47/15	4	2	2.0	1.0	15	92
4	2/15	15/15	64	2/15	4/15	2/15	56/75	4	1	3.0	2.0	17	71
5	15/15 (Note 4)	15/15 (Note 4)	64	15/15 (Note 4)	30/15	24/15	134/15	4	1	1.0	0.0	21	81
Note 1: Δ_{ACK} , Δ_{NACK} and $\Delta_{CQI} = 30/15$ with $\beta_{hs} = 30/15 * \beta_c$. Note 2: CM = 1 for $\beta_c/\beta_d = 12/15$, $\beta_{hs}/\beta_c = 24/15$. For all other combinations of DPDCH, DPCCH, HS-DPCCH, E-DPDCH and E-DPCCH the MPR is based on the relative CM difference. Note 3: For subtest 1 the β_c/β_d ratio of 11/15 for the TFC during the measurement period (TF1, TF0) is achieved by setting the signalled gain factors for the reference TFC (TF1, TF1) to $\beta_c = 10/15$ and $\beta_d = 15/15$. Note 4: For subtest 5 the β_c/β_d ratio of 15/15 for the TFC during the measurement period (TF1, TF0) is achieved by setting the signalled gain factors for the reference TFC (TF1, TF1) to $\beta_c = 14/15$ and $\beta_d = 15/15$. Note 5: In case of testing by UE using E-DPDCH Physical Layer category 1, Sub-test 3 is omitted according to TS25.306 Table 5.1g. Note 6: β_{ed} can not be set directly, it is set by Absolute Grant Value.													

Setup Configuration

<WCDMA Conducted Power>

WCDMA		Band II (dBm)			
TX Channel	Tune-up limit (dBm)	9262	9400	9538	
Frequency (MHz)		1852.4	1880.0	1907.6	
RMC 12.2Kbps	23.50	23.37	23.38	22.96	
HSDPA Subtest-1	22.50	22.28	22.26	21.78	
HSDPA Subtest-2	21.50	21.16	21.27	20.43	
HSDPA Subtest-3	21.00	20.77	20.53	20.53	
HSDPA Subtest-4	20.50	19.95	20.31	19.98	
HSUPA Subtest-1	22.50	22.39	22.14	22.10	
HSUPA Subtest-2	21.50	20.50	21.29	20.73	
HSUPA Subtest-3	22.00	20.34	21.72	20.90	
HSUPA Subtest-4	20.50	19.95	19.58	20.43	
HSUPA Subtest-5	20.50	19.39	20.38	19.91	

WCDMA		Band V (dBm)			
TX Channel	Tune-up limit (dBm)	4132	4182	4233	
Frequency (MHz)		826.4	836.4	846.6	
RMC 12.2Kbps	24.00	23.53	23.55	23.32	
HSDPA Subtest-1	22.50	22.17	22.03	21.79	
HSDPA Subtest-2	22.00	20.88	21.55	21.39	
HSDPA Subtest-3	22.00	21.66	20.99	21.57	
HSDPA Subtest-4	21.00	19.78	20.55	20.31	
HSUPA Subtest-1	22.50	21.75	22.17	22.48	
HSUPA Subtest-2	22.00	21.25	21.84	21.80	
HSUPA Subtest-3	22.50	22.06	21.71	22.04	
HSUPA Subtest-4	21.00	20.33	20.52	20.80	
HSUPA Subtest-5	22.00	20.82	21.61	21.72	

General Note

1. Per KDB 941225 D01 v02, RMC 12.2kbps setting is used to evaluate SAR as primary mode. When the maximum output power and tune-up tolerance specified for production units in a secondary mode is $\leq \frac{1}{4}$ dB higher than the primary mode or when the highest reported SAR of the primary mode is scaled by the ratio of specified maximum output power and tune-up tolerance of secondary to primary mode and the adjusted SAR is ≤ 1.2 W/kg, SAR measurement is not required for the secondary mode.
2. It is expected by the manufacturer that MPR for some HSDPA/HSUPA subtests may differ from the specification of 3GPP, according to the chipset implementation in this model. The implementation and expected deviation are detailed in tune-up procedure exhibit.

<LTE Conducted Power>

LTE Band 2							
BW (MHz)	Modulation	RB Size	RB Offset	Channel/Frequency(MHz)			Tune-up limit (dBm)
				18700	18900	19100	
				1860	1880	1900	
20	QPSK	1	0	23.06	23.58	23.42	24.00
20	QPSK	1	49	23.14	23.38	23.56	24.00
20	QPSK	1	99	23.08	23.40	22.89	24.00
20	QPSK	50	0	22.00	22.16	22.24	23.00
20	QPSK	50	24	22.29	22.06	22.06	23.00
20	QPSK	50	50	22.15	22.24	22.14	23.00
20	QPSK	100	0	22.11	21.96	22.28	23.00
20	16QAM	1	0	22.39	22.13	22.30	23.00
20	16QAM	1	49	22.12	22.26	22.14	23.00
20	16QAM	1	99	22.39	22.29	22.03	23.00
20	16QAM	50	0	21.20	21.34	21.29	22.00
20	16QAM	50	24	21.17	21.13	21.38	22.00
20	16QAM	50	50	21.25	21.07	21.20	22.00
20	16QAM	100	0	21.39	21.39	21.24	22.00
BW (MHz)	Modulation	RB Size	RB Offset	Channel/Frequency(MHz)			Tune-up limit (dBm)
				18675	18900	19125	
				1857.5	1880	1902.5	
15	QPSK	1	0	23.09	23.11	23.00	24.00
15	QPSK	1	37	23.11	23.67	23.37	24.00
15	QPSK	1	74	22.97	23.30	23.07	24.00
15	QPSK	36	0	22.27	22.08	22.24	23.00
15	QPSK	36	20	22.31	22.01	21.89	23.00
15	QPSK	36	39	22.25	22.24	22.08	23.00
15	QPSK	75	0	21.94	22.02	22.15	23.00
15	16QAM	1	0	22.20	22.16	22.13	23.00
15	16QAM	1	37	21.92	22.23	22.28	23.00
15	16QAM	1	74	22.07	22.00	21.92	23.00
15	16QAM	36	0	21.36	21.04	21.12	22.00
15	16QAM	36	20	21.14	21.06	21.07	22.00
15	16QAM	36	39	21.42	21.42	21.29	22.00
15	16QAM	75	0	21.10	21.45	20.99	22.00
BW (MHz)	Modulation	RB Size	RB Offset	Channel/Frequency(MHz)			Tune-up limit (dBm)
				18650	18900	19150	
				1855	1880	1905	
10	QPSK	1	0	23.27	23.02	23.03	24.00
10	QPSK	1	25	23.67	23.57	22.91	24.00

10	QPSK	1	49	23.51	23.42	23.68	24.00
10	QPSK	25	0	21.94	22.13	22.01	23.00
10	QPSK	25	12	22.23	22.15	22.30	23.00
10	QPSK	25	25	22.30	22.09	21.91	23.00
10	QPSK	50	0	22.27	22.27	22.26	23.00
10	16QAM	1	0	22.37	22.34	21.92	23.00
10	16QAM	1	25	22.36	22.42	22.02	23.00
10	16QAM	1	49	22.24	22.34	22.31	23.00
10	16QAM	25	0	21.18	21.38	21.45	22.00
10	16QAM	25	12	21.19	21.06	21.22	22.00
10	16QAM	25	25	21.24	21.45	21.46	22.00
10	16QAM	50	0	21.05	21.44	21.38	22.00
BW (MHz)	Modulation	RB Size	RB Offset	Channel/Frequency(MHz)			Tune-up limit (dBm)
				18625	18900	19175	
				1852.5	1880	1907.5	
5	QPSK	1	0	23.49	23.17	23.23	24.00
5	QPSK	1	12	23.61	23.58	23.44	24.00
5	QPSK	1	24	23.31	23.54	23.14	24.00
5	QPSK	12	0	22.08	21.94	22.36	23.00
5	QPSK	12	7	22.19	22.19	22.01	23.00
5	QPSK	12	13	22.06	22.17	22.04	23.00
5	QPSK	25	0	22.01	22.29	21.99	23.00
5	16QAM	1	0	21.90	22.18	22.27	23.00
5	16QAM	1	12	22.27	22.38	22.15	23.00
5	16QAM	1	24	22.14	22.39	22.27	23.00
5	16QAM	12	0	21.42	21.18	21.23	22.00
5	16QAM	12	7	21.12	21.13	21.24	22.00
5	16QAM	12	13	21.17	21.41	21.10	22.00
5	16QAM	25	0	21.31	21.29	21.19	22.00
BW (MHz)	Modulation	RB Size	RB Offset	Channel/Frequency(MHz)			Tune-up limit (dBm)
				18615	18900	19185	
				1851.5	1880	1908.5	
3	QPSK	1	0	23.53	23.33	23.09	24.00
3	QPSK	1	8	23.34	23.39	23.45	24.00
3	QPSK	1	14	23.62	23.53	23.21	24.00
3	QPSK	8	0	22.09	22.00	22.21	23.00
3	QPSK	8	4	22.01	22.29	21.98	23.00
3	QPSK	8	7	22.22	21.97	22.17	23.00
3	QPSK	15	0	22.02	22.09	21.91	23.00
3	16QAM	1	0	22.26	22.10	22.05	23.00
3	16QAM	1	8	22.11	22.00	22.12	23.00
3	16QAM	1	14	22.19	22.09	22.09	23.00

3	16QAM	8	0	21.37	21.32	21.21	22.00
3	16QAM	8	4	21.35	21.35	21.29	22.00
3	16QAM	8	7	21.35	21.25	21.52	22.00
3	16QAM	15	0	21.16	21.21	21.38	22.00
BW (MHz)	Modulation	RB Size	RB Offset	Channel/Frequency(MHz)			Tune-up limit (dBm)
				18607	18900	19193	
				1850.7	1880	1909.3	
1.4	QPSK	1	0	23.50	23.49	23.45	24.00
1.4	QPSK	1	3	23.49	23.55	23.02	24.00
1.4	QPSK	1	5	23.58	23.62	23.56	24.00
1.4	QPSK	3	0	22.18	21.99	21.97	23.00
1.4	QPSK	3	1	22.08	22.01	22.15	23.00
1.4	QPSK	3	3	22.38	21.99	22.13	23.00
1.4	QPSK	6	0	22.02	21.96	22.06	23.00
1.4	16QAM	1	0	22.12	21.99	22.02	23.00
1.4	16QAM	1	3	22.24	22.29	22.32	23.00
1.4	16QAM	1	5	22.22	21.90	22.08	23.00
1.4	16QAM	3	0	21.18	21.46	21.16	22.00
1.4	16QAM	3	1	21.28	21.10	21.03	22.00
1.4	16QAM	3	3	21.13	21.11	21.39	22.00
1.4	16QAM	6	0	21.11	21.15	21.34	22.00

LTE Band 5							
BW (MHz)	Modulation	RB Size	RB Offset	Channel/Frequency(MHz)			Tune-up limit (dBm)
				20450	20525	20600	
				829	836.5	844	
10	QPSK	1	0	23.57	22.95	23.60	24.00
10	QPSK	1	25	23.44	23.22	23.45	24.00
10	QPSK	1	49	23.56	23.24	22.91	24.00
10	QPSK	25	0	22.16	22.16	22.09	23.00
10	QPSK	25	12	21.97	22.27	22.04	23.00
10	QPSK	25	25	22.33	22.32	21.97	23.00
10	QPSK	50	0	22.28	22.12	22.12	23.00
10	16QAM	1	0	22.41	21.92	22.21	23.00
10	16QAM	1	25	21.93	22.11	22.01	23.00
10	16QAM	1	49	22.09	21.97	22.33	23.00
10	16QAM	25	0	21.04	21.11	21.03	22.00
10	16QAM	25	12	21.10	21.47	21.04	22.00
10	16QAM	25	25	21.16	21.28	21.08	22.00
10	16QAM	50	0	21.29	21.30	21.20	22.00
BW (MHz)	Modulation	RB Size	RB Offset	Channel/Frequency(MHz)			Tune-up limit (dBm)
				20425	20525	20625	
				826.5	836.5	846.5	
5	QPSK	1	0	23.16	23.56	22.97	24.00
5	QPSK	1	12	23.13	23.32	23.14	24.00
5	QPSK	1	24	23.37	23.06	23.26	24.00
5	QPSK	12	0	21.99	22.00	21.94	23.00
5	QPSK	12	7	22.23	22.11	22.14	23.00
5	QPSK	12	13	22.25	21.98	22.31	23.00
5	QPSK	25	0	22.36	22.20	21.97	23.00
5	16QAM	1	0	22.39	21.97	21.96	23.00
5	16QAM	1	12	22.14	21.96	22.09	23.00
5	16QAM	1	24	22.13	22.30	21.86	23.00
5	16QAM	12	0	21.10	21.26	21.50	22.00
5	16QAM	12	7	21.26	21.32	21.03	22.00
5	16QAM	12	13	21.15	21.34	21.27	22.00
5	16QAM	25	0	21.53	21.26	21.41	22.00
BW (MHz)	Modulation	RB Size	RB Offset	Channel/Frequency(MHz)			Tune-up limit (dBm)
				20415	20525	20635	
				825.5	836.5	844	
3	QPSK	1	0	23.04	23.18	23.31	24.00
3	QPSK	1	8	22.98	23.47	22.97	24.00
3	QPSK	1	14	23.23	23.32	23.09	24.00

3	QPSK	8	0	22.24	22.07	21.78	23.00
3	QPSK	8	4	21.92	22.19	22.20	23.00
3	QPSK	8	7	22.36	21.97	21.94	23.00
3	QPSK	15	0	21.87	22.24	21.97	23.00
3	16QAM	1	0	22.15	22.03	22.08	23.00
3	16QAM	1	8	22.11	22.29	22.06	23.00
3	16QAM	1	14	21.87	22.27	22.22	23.00
3	16QAM	8	0	21.06	21.05	21.04	22.00
3	16QAM	8	4	20.88	21.14	21.44	22.00
3	16QAM	8	7	21.09	21.07	20.98	22.00
3	16QAM	15	0	21.10	21.14	21.26	22.00
BW (MHz)	Modulation	RB Size	RB Offset	Channel/Frequency(MHz)			Tune-up limit (dBm)
				20407	20525	20643	
				824.7	836.5	848.3	
1.4	QPSK	1	0	23.54	22.76	23.23	24.00
1.4	QPSK	1	3	23.62	23.28	23.52	24.00
1.4	QPSK	1	5	23.52	23.51	23.67	24.00
1.4	QPSK	3	0	21.94	22.08	22.08	23.00
1.4	QPSK	3	1	21.92	22.07	21.80	23.00
1.4	QPSK	3	3	22.05	21.96	21.77	23.00
1.4	QPSK	6	0	22.03	21.96	22.25	23.00
1.4	16QAM	1	0	21.85	22.20	22.31	23.00
1.4	16QAM	1	3	21.98	22.20	22.31	23.00
1.4	16QAM	1	5	21.95	21.99	22.23	23.00
1.4	16QAM	3	0	21.23	21.07	21.17	22.00
1.4	16QAM	3	1	20.93	21.38	20.97	22.00
1.4	16QAM	3	3	21.33	21.12	21.18	22.00
1.4	16QAM	6	0	21.27	21.36	21.32	22.00

LTE Band 7							
BW (MHz)	Modulation	RB Size	RB Offset	Channel/Frequency(MHz)			Tune-up limit (dBm)
				20850	21100	21350	
				2510	2535	2560	
20	QPSK	1	0	23.63	22.97	23.53	24.00
20	QPSK	1	49	23.08	22.94	23.54	24.00
20	QPSK	1	99	23.63	23.81	22.97	24.00
20	QPSK	50	0	21.74	22.28	21.94	23.00
20	QPSK	50	24	22.26	22.26	22.03	23.00
20	QPSK	50	50	22.18	22.25	22.00	23.00
20	QPSK	100	0	22.31	22.21	22.06	23.00
20	16QAM	1	0	22.22	21.91	22.23	23.00
20	16QAM	1	49	22.41	22.18	22.06	23.00
20	16QAM	1	99	21.99	22.37	22.09	23.00
20	16QAM	50	0	20.92	20.98	20.97	22.00
20	16QAM	50	24	21.51	21.14	21.31	22.00
20	16QAM	50	50	21.18	21.16	21.09	22.00
20	16QAM	100	0	21.22	21.41	21.09	22.00
BW (MHz)	Modulation	RB Size	RB Offset	Channel/Frequency(MHz)			Tune-up limit (dBm)
				20825	21100	21375	
				2507.5	2535	2562.5	
15	QPSK	1	0	23.55	23.27	23.68	24.00
15	QPSK	1	37	23.13	23.28	23.39	24.00
15	QPSK	1	74	23.04	23.38	22.83	24.00
15	QPSK	36	0	21.99	21.90	21.76	23.00
15	QPSK	36	20	22.07	22.03	21.98	23.00
15	QPSK	36	39	22.33	22.00	22.12	23.00
15	QPSK	75	0	21.96	22.18	22.34	23.00
15	16QAM	1	0	22.15	22.05	22.35	23.00
15	16QAM	1	37	21.97	21.83	22.05	23.00
15	16QAM	1	74	22.35	22.27	22.33	23.00
15	16QAM	36	0	21.18	21.46	21.40	22.00
15	16QAM	36	20	21.20	21.00	21.24	22.00
15	16QAM	36	39	21.15	21.36	21.16	22.00
15	16QAM	75	0	21.08	21.31	20.99	22.00
BW (MHz)	Modulation	RB Size	RB Offset	Channel/Frequency(MHz)			Tune-up limit (dBm)
				20800	21100	21400	
				2505	2535	2565	
10	QPSK	1	0	23.27	23.39	23.07	24.00
10	QPSK	1	25	23.11	23.47	23.21	24.00

10	QPSK	1	49	23.02	23.03	23.42	24.00
10	QPSK	25	0	22.27	22.09	22.02	23.00
10	QPSK	25	12	22.08	22.11	21.97	23.00
10	QPSK	25	25	22.08	21.88	22.11	23.00
10	QPSK	50	0	22.33	22.24	22.07	23.00
10	16QAM	1	0	22.07	22.25	22.16	23.00
10	16QAM	1	25	22.09	22.08	22.16	23.00
10	16QAM	1	49	21.91	21.89	21.83	22.00
10	16QAM	25	0	21.23	21.10	20.96	22.00
10	16QAM	25	12	21.31	21.30	21.26	22.00
10	16QAM	25	25	21.16	21.00	21.11	22.00
10	16QAM	50	0	21.38	21.29	21.08	22.00
BW (MHz)	Modulation	RB Size	RB Offset	Channel/Frequency(MHz)			Tune-up limit (dBm)
				20775	21100	21425	
				2502.5	2535	2567.5	
5	QPSK	1	0	23.26	23.12	22.77	24.00
5	QPSK	1	12	23.52	23.31	23.49	24.00
5	QPSK	1	24	23.21	23.70	23.12	24.00
5	QPSK	12	0	21.99	21.75	22.17	23.00
5	QPSK	12	7	22.19	22.43	21.85	23.00
5	QPSK	12	13	21.80	22.26	22.07	23.00
5	QPSK	25	0	22.12	21.96	22.11	23.00
5	16QAM	1	0	21.94	22.27	22.13	23.00
5	16QAM	1	12	22.34	22.14	22.19	23.00
5	16QAM	1	24	22.13	21.97	22.18	23.00
5	16QAM	12	0	21.30	21.33	21.44	22.00
5	16QAM	12	7	21.46	21.04	21.43	22.00
5	16QAM	12	13	21.08	21.53	21.05	22.00
5	16QAM	25	0	21.51	21.30	21.39	22.00

<WLAN 2.4GHz Conducted Power>

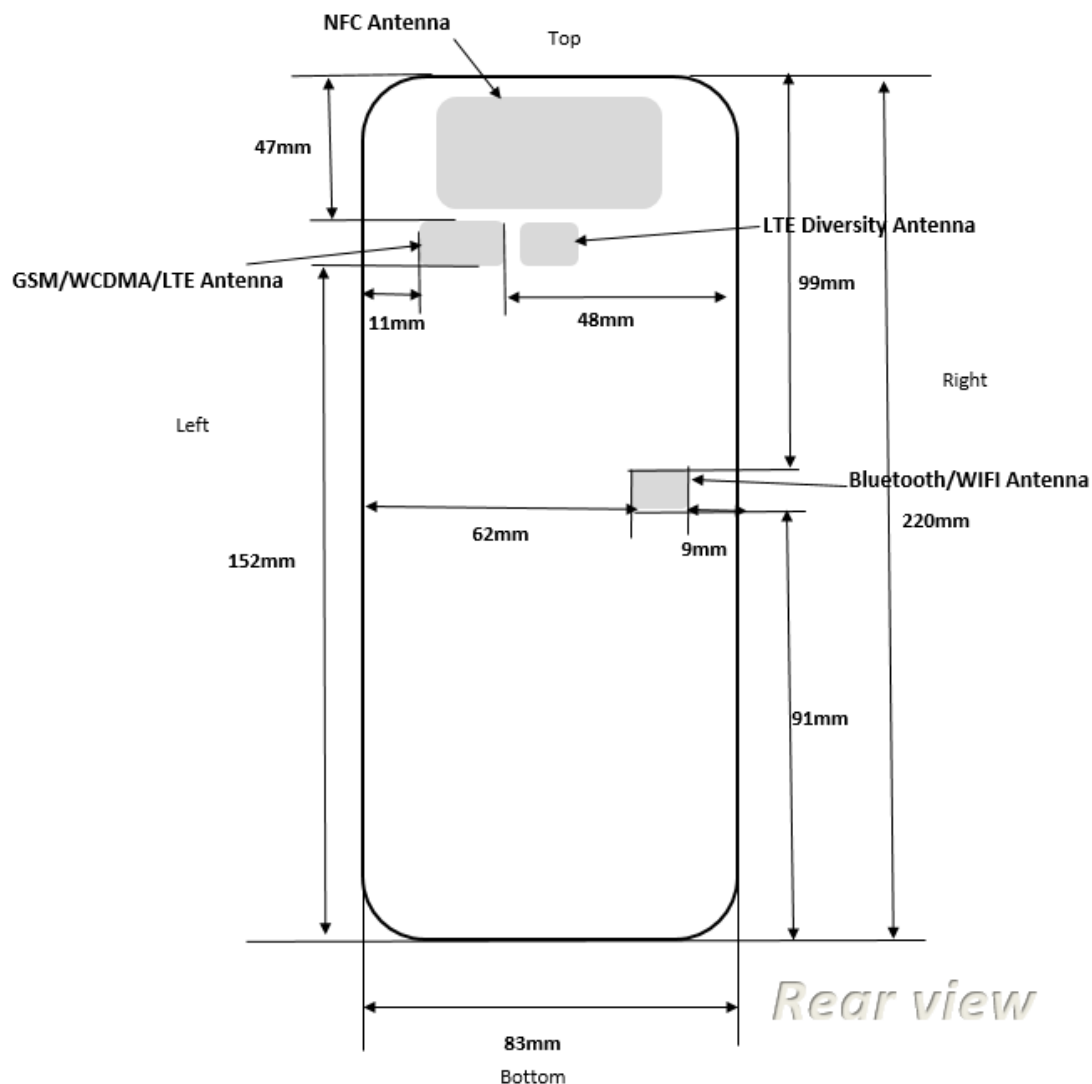
Type	Channel	Output power PK (dBm)	Output power AV (dBm)	Tune-up limit (dBm)
802.11b	01	14.87	13.71	14.00
	06	14.03	12.77	13.00
	11	14.36	13.22	14.00
802.11g	01	13.56	11.98	12.00
	06	13.09	11.55	12.00
	11	12.91	11.35	12.00
802.11n(HT20)	01	13.56	12.10	13.00
	06	12.92	11.39	12.00
	11	12.81	11.37	12.00

< Bluetooth Conducted Power>

Type	Channel	Output power PK (dBm)	Output power AV (dBm)	Tune-up limit (dBm)
GFSK 1Mbps	00	-1.76	-2.96	-2.00
	19	0.08	-1.12	-1.00
	39	0.40	-0.80	0.00

Type	Channel	Output power PK (dBm)	Output power AV (dBm)	Tune-up limit (dBm)
GFSK	00	0.84	-0.36	0.00
	39	1.40	0.2	1.00
	78	-3.31	-4.51	-4.00
$\pi/4$ DQPSK	00	-2.39	-3.59	-3.00
	39	-0.88	-2.08	-2.00
	78	-2.66	-3.86	-3.00
8DPSK	00	-2.39	-3.59	-3.00
	39	-0.93	-2.13	-2.00
	78	-2.61	-3.81	-3.00

10.2 Transmit Antennas



Distance of The Antenna to the EUT surface and edge						
Antennas	Front	Back	Top Side	Bottom Side	Left Side	Right Side
GSM/WCDMA/LTE	<5mm	<5mm	47mm	152mm	11mm	48mm
WLAN/Bluetooth	<5mm	<5mm	99mm	91mm	62mm	9mm

10.3 SAR Test Exclusion and Estimated SAR

Unless specifically required by the published RF exposure KDB procedures, standalone 1-g head or body and Product specific 10g SAR evaluation for general population exposure conditions, by measurement or numerical simulation, is not required when the corresponding SAR Test Exclusion Threshold condition is satisfied. These test exclusion conditions are based on source-based time-averaged maximum conducted output power of the RF channel requiring evaluation, adjusted for tune-up tolerance, and the minimum test separation distance required for the exposure conditions.

SAR Test Exclusion Thresholds for 100 MHz – 6 GHz and ≤ 50 mm

MHz	5	10	15	20	25	mm
150	39	77	116	155	194	SAR Test Exclusion Threshold (mW)
300	27	55	82	110	137	
450	22	45	67	89	112	
835	16	33	49	66	82	
900	16	32	47	63	79	
1500	12	24	37	49	61	
1900	11	22	33	44	54	
2450	10	19	29	38	48	
3600	8	16	24	32	40	
5200	7	13	20	26	33	
5400	6	13	19	26	32	
5800	6	12	19	25	31	
MHz	30	35	40	45	50	mm
150	232	271	310	349	387	SAR Test Exclusion Threshold (mW)
300	164	192	219	246	274	
450	134	157	179	201	224	
835	98	115	131	148	164	
900	95	111	126	142	158	
1500	73	86	98	110	122	
1900	65	76	87	98	109	
2450	57	67	77	86	96	
3600	47	55	63	71	79	
5200	39	46	53	59	66	
5400	39	45	52	58	65	
5800	37	44	50	56	62	

When the minimum test separation distance is < 5 mm, a distance of 5 mm is applied to determine SAR test exclusion.

The test exclusions are applicable only when the minimum test separation distance is > 50 mm and for transmission frequencies between 100 MHz and 6 GHz.

SAR Test Exclusion Thresholds for 100 MHz – 6 GHz and > 50 mm

MHz	50	60	70	80	90	100	110	120	130	140	150	160	170	180	190	mm
100	474	481	487	494	501	507	514	521	527	534	541	547	554	561	567	mW
150	387	397	407	417	427	437	447	457	467	477	487	497	507	517	527	
300	274	294	314	334	354	374	394	414	434	454	474	494	514	534	554	
450	224	254	284	314	344	374	404	434	464	494	524	554	584	614	644	
835	164	220	275	331	387	442	498	554	609	665	721	776	832	888	943	
900	158	218	278	338	398	458	518	578	638	698	758	818	878	938	998	
1500	122	222	322	422	522	622	722	822	922	1022	1122	1222	1322	1422	1522	
1900	109	209	309	409	509	609	709	809	909	1009	1109	1209	1309	1409	1509	
2450	96	196	296	396	496	596	696	796	896	996	1096	1196	1296	1396	1496	
3600	79	179	279	379	479	579	679	779	879	979	1079	1179	1279	1379	1479	
5200	66	166	266	366	466	566	666	766	866	966	1066	1166	1266	1366	1466	
5400	65	165	265	365	465	565	665	765	865	965	1065	1165	1265	1365	1465	
5800	62	162	262	362	462	562	662	762	862	962	1062	1162	1262	1362	1462	

According to the table above, Standalone SAR exclusion calculation for this device are as below:

Freq. Band	Frequency (MHz)	Position	Test Separation (mm)	Max Power (dBm)	Max Power (mW)	Exclusion Threshold (mW)	Exclusion (Yes/No)
Bluetooth	2441	Front	5	1.00	1.26	10	Yes
	2441	Back	5	1.00	1.26	10	Yes
	2441	Left edge	62	1.00	1.26	216	Yes
	2441	Right edge	9	1.00	1.26	17.2	Yes
	2441	Top edge	99	1.00	1.26	586	Yes
	2441	Bottom edge	91	1.00	1.26	506	Yes
Wi-Fi 2.4G	2412	Front	5	14.00	25.12	10	No
	2412	Back	5	14.00	25.12	10	No
	2412	Left edge	62	14.00	25.12	216	Yes
	2412	Right edge	9	14.00	25.12	17.2	No
	2412	Top edge	99	14.00	25.12	586	Yes
	2412	Bottom edge	91	14.00	25.12	506	Yes

Freq. Band	Frequency (MHz)	Position	Test Separation (mm)	Max Power (dBm)	Max Power (mW)	Exclusion Threshold (mW)	Exclusion (Yes/No)
GSM 850	836.6	Front	5	25.75	375.84	16	No

	836.6	Back	5	25.75	375.84	16	No
	836.6	Left edge	11	25.75	375.84	36.2	No
	836.6	Right edge	48	25.75	375.84	157.6	No
	836.6	Top edge	47	25.75	375.84	154.4	No
	836.6	Bottom edge	152	25.75	375.84	732	Yes
PCS 1900	1909.8	Front	5	22.87	193.64	11	No
	1909.8	Back	5	22.87	193.64	11	No
	1909.8	Left edge	11	22.87	193.64	24.2	No
	1909.8	Right edge	48	22.87	193.64	104.6	No
	1909.8	Top edge	47	22.87	193.64	102.4	No
	1909.8	Bottom edge	152	22.87	193.64	1129	Yes
WCDMA Band II	1880.0	Front	5	23.50	223.87	11	No
	1880.0	Back	5	23.50	223.87	11	No
	1880.0	Left edge	11	23.50	223.87	24.2	No
	1880.0	Right edge	48	23.50	223.87	104.6	No
	1880.0	Top edge	47	23.50	223.87	102.4	No
	1880.0	Bottom edge	152	23.50	223.87	1129	Yes
WCDMA Band V	836.4	Front	5	24.00	251.19	16	No
	836.4	Back	5	24.00	251.19	16	No
	836.4	Left edge	11	24.00	251.19	36.2	No
	836.4	Right edge	48	24.00	251.19	157.6	No
	836.4	Top edge	47	24.00	251.19	154.4	No
	836.4	Bottom edge	152	24.00	251.19	732	Yes
LTE Band 2	1880.0	Front	5	24.00	251.19	11	No
	1880.0	Back	5	24.00	251.19	11	No
	1880.0	Left edge	11	24.00	251.19	24.2	No
	1880.0	Right edge	48	24.00	251.19	104.6	No
	1880.0	Top edge	47	24.00	251.19	102.4	No
	1880.0	Bottom edge	152	24.00	251.19	1129	Yes
LTE Band 5	844.0	Front	5	24.00	251.19	16	No
	844.0	Back	5	24.00	251.19	16	No
	844.0	Left edge	11	24.00	251.19	36.2	No
	844.0	Right edge	48	24.00	251.19	157.6	No
	844.0	Top edge	47	24.00	251.19	154.4	No
	844.0	Bottom edge	152	24.00	251.19	732	Yes
LTE Band 7	2535.0	Front	5	24.00	251.19	10	No
	2535.0	Back	5	24.00	251.19	10	No
	2535.0	Left edge	11	24.00	251.19	21	No
	2535.0	Right edge	48	24.00	251.19	92	No
	2535.0	Top edge	47	24.00	251.19	90	No
	2535.0	Bottom edge	152	24.00	251.19	1116	Yes

From what is shown in the table above, we can draw the conclusion that:

EUT Sides for SAR Testing							
Mode	Exposure Condition	Front	Back	Left	Right	Top	Bottom
Bluetooth	Body	Yes	Yes	Yes	Yes	Yes	Yes
WIFI 2.4G	Body	Yes	Yes	No	Yes	No	No

EUT Sides for SAR Testing							
Mode	Exposure Condition	Front	Back	Left	Right	Top	Bottom
GSM 850	Body	Yes	Yes	Yes	Yes	Yes	No
PCS 1900	Body	Yes	Yes	Yes	Yes	Yes	No
WCDMA Band II	Body	Yes	Yes	Yes	Yes	Yes	No
WCDMA Band V	Body	Yes	Yes	Yes	Yes	Yes	No
LTE Band 2	Body	Yes	Yes	Yes	Yes	Yes	No
LTE Band 5	Body	Yes	Yes	Yes	Yes	Yes	No
LTE Band 7	Body	Yes	Yes	Yes	Yes	Yes	No

EUT Sides for SAR Testing.

Note 1: This device has NFC operations, the NFC antenna is integrated into the device for this model, therefore e. all SAR test were performed with the device which already incorporates the NFC antenna.

10.4 SAR Test Results

General Note:

- 1 Per KDB 447498 D01v06, the reported SAR is the measured SAR value adjusted for maximum tune-up tolerance.
 - a) Tune-up scaling Factor = tune-up limit power (mW) / EUT RF power (mW), where tune-up limit is the maximum rated power among all production units.
 - b) For SAR testing of WLAN signal with non-100% duty cycle, the measured SAR is scaled-up by the duty cycle scaling factor which is equal to "1/(duty cycle)"
 - c) For WLAN/Bluetooth: Reported SAR(W/kg)= Measured SAR(W/kg)* Duty Cycle scaling factor * Tune-up scaling factor
- 2 Per KDB 447498 D01v06, for each exposure position, testing of other required channels within the operating mode of a frequency band is not required when the reported 1-g or 10-g SAR for the mid-band or highest output power channel is:
 - ≤ 0.8 W/kg or 2.0 W/kg, for 1-g or 10-g respectively, when the transmission band is ≤ 100 MHz
 - ≤ 0.6 W/kg or 1.5 W/kg, for 1-g or 10-g respectively, when the transmission band is between 100 MHz and 200 MHz
 - ≤ 0.4 W/kg or 1.0 W/kg, for 1-g or 10-g respectively, when the transmission band is ≥ 200 MHz
- 3 Per KDB 865664 D01v01r04, for each frequency band, repeated SAR measurement is required only when the measured SAR is ≥ 0.8 W/kg.

<Body SAR>

SAR Values [GSM 850]

Plot No.	Mode	Test Position	Ch.	Freq. (MHz)	Average Power (dBm)	Tune-Up Limit (dBm)	Scaling Factor	Power Drift (dB)	Measured SAR1g (W/kg)	Reported SAR1g (W/kg)
Measured / Reported SAR numbers-Body distance 0mm										
#1	GPRS 3tx slot	Front	190	836.6	30.17	30.50	1.079	0.08	0.587	0.633
	GPRS 3tx slot	Back	190	836.6	30.17	30.50	1.079	-0.14	0.542	0.585
	GPRS 3tx slot	Left Edge	190	836.6	30.17	30.50	1.079	0.16	0.518	0.559
	GPRS 3tx slot	Right Edge	190	836.6	30.17	30.50	1.079	-0.17	0.345	0.372
	GPRS 3tx slot	Top Edge	190	836.6	30.17	30.50	1.079	0.09	0.465	0.502

SAR Values [PCS 1900]

Plot No.	Mode	Test Position	Ch.	Freq. (MHz)	Average Power (dBm)	Tune-Up Limit (dBm)	Scaling Factor	Power Drift (dB)	Measured SAR1g (W/kg)	Reported SAR1g (W/kg)
Measured / Reported SAR numbers-Body distance 0mm										
#2	GPRS 2tx slot	Front	810	1909.8	29.05	29.50	1.109	-0.15	0.462	0.512
	GPRS 2tx slot	Back	810	1909.8	29.05	29.50	1.109	-0.11	0.412	0.457
	GPRS 2tx slot	Left Edge	810	1909.8	29.05	29.50	1.109	-0.09	0.374	0.415
	GPRS 2tx slot	Right Edge	810	1909.8	29.05	29.50	1.109	-0.13	0.214	0.237
	GPRS 2tx slot	Top Edge	810	1909.8	29.05	29.50	1.109	0.07	0.315	0.349

SAR Values [WCDMA band II]

Plot No.	Mode	Test Position	Ch.	Freq. (MHz)	Average Power (dBm)	Tune-Up Limit (dBm)	Scaling Factor	Power Drift (dB)	Measured SAR1g (W/kg)	Reported SAR1g (W/kg)
Measured / Reported SAR numbers-Body distance 0mm										
#3	RMC 12.2K	Front	9400	1880.0	23.38	23.50	1.028	0.01	0.415	0.427
	RMC 12.2K	Back	9400	1880.0	23.38	23.50	1.028	-0.17	0.378	0.389
	RMC 12.2K	Left Edge	9400	1880.0	23.38	23.50	1.028	0.16	0.329	0.338
	RMC 12.2K	Right Edge	9400	1880.0	23.38	23.50	1.028	-0.09	0.132	0.136
	RMC 12.2K	Top Edge	9400	1880.0	23.38	23.50	1.028	0.05	0.241	0.248

SAR Values [WCDMA band V]

Plot No.	Mode	Test Position	Ch.	Freq. (MHz)	Average Power (dBm)	Tune-Up Limit (dBm)	Scaling Factor	Power Drift (dB)	Measured SAR1g (W/kg)	Reported SAR1g (W/kg)
Measured / Reported SAR numbers-Body distance 0mm										
#4	RMC 12.2K	Front	4182	836.4	23.55	24.00	1.109	-0.05	0.532	0.590
	RMC 12.2K	Back	4182	836.4	23.55	24.00	1.109	-0.17	0.495	0.549
	RMC 12.2K	Left Edge	4182	836.4	23.55	24.00	1.109	-0.03	0.426	0.473
	RMC 12.2K	Right Edge	4182	836.4	23.55	24.00	1.109	-0.07	0.218	0.242
	RMC 12.2K	Top Edge	4182	836.4	23.55	24.00	1.109	-0.18	0.325	0.360

SAR Values [LTE Band 2]

Plot No.	Mode	Test Position	Ch.	Freq. (MHz)	Average Power (dBm)	Tune-Up Limit (dBm)	Scaling Factor	Power Drift (dB)	Measured SAR1g (W/kg)	Reported SAR1g (W/kg)
Measured / Reported SAR numbers-Body distance 0mm										
#5	20MHz/1RB#0	Front	18900	1880	23.58	24.00	1.102	-0.01	0.448	0.493
	20MHz/1RB#0	Back	18900	1880	23.58	24.00	1.102	-0.15	0.406	0.447
	20MHz/1RB#0	Left Edge	18900	1880	23.58	24.00	1.102	-0.06	0.345	0.380
	20MHz/1RB#0	Right Edge	18900	1880	23.58	24.00	1.102	-0.17	0.166	0.183
	20MHz/1RB#0	Top Edge	18900	1880	23.58	24.00	1.102	0.12	0.245	0.270
	20MHz/50RB#24	Front	18700	1860	22.29	23.00	1.178	0.13	0.314	0.370
	20MHz/50RB#24	Back	18700	1860	22.29	23.00	1.178	0.18	0.265	0.312
	20MHz/50RB#24	Left Edge	18700	1860	22.29	23.00	1.178	0.04	0.211	0.248
	20MHz/50RB#24	Right Edge	18700	1860	22.29	23.00	1.178	0.01	0.075	0.088
	20MHz/50RB#24	Top Edge	18700	1860	22.29	23.00	1.178	-0.16	0.142	0.167

SAR Values [LTE Band 5]

Plot No.	Mode	Test Position	Ch.	Freq. (MHz)	Average Power (dBm)	Tune-Up Limit (dBm)	Scaling Factor	Power Drift (dB)	Measured SAR1g (W/kg)	Reported SAR1g (W/kg)
Measured / Reported SAR numbers-Body distance 0mm										
#6	10MHz/1RB#0	Front	20600	844	23.60	24.00	1.096	-0.14	0.511	0.560
	10MHz/1RB#0	Back	20600	844	23.60	24.00	1.096	-0.15	0.469	0.514
	10MHz/1RB#0	Left Edge	20600	844	23.60	24.00	1.096	0.02	0.421	0.462
	10MHz/1RB#0	Right Edge	20600	844	23.60	24.00	1.096	-0.17	0.206	0.226
	10MHz/1RB#0	Top Edge	20600	844	23.60	24.00	1.096	0.06	0.318	0.349
	10MHz/25RB#25	Front	20450	829	22.33	23.00	1.167	-0.18	0.352	0.411
	10MHz/25RB#25	Back	20450	829	22.33	23.00	1.167	-0.09	0.308	0.359
	10MHz/25RB#25	Left Edge	20450	829	22.33	23.00	1.167	0.05	0.236	0.275
	10MHz/25RB#25	Right Edge	20450	829	22.33	23.00	1.167	-0.17	0.096	0.112
	10MHz/25RB#25	Top Edge	20450	829	22.33	23.00	1.167	0.05	0.187	0.218

SAR Values [LTE Band 7]

Plot No.	Mode	Test Position	Ch.	Freq. (MHz)	Average Power (dBm)	Tune-Up Limit (dBm)	Scaling Factor	Power Drift (dB)	Measured SAR _{1g} (W/kg)	Reported SAR _{1g} (W/kg)
Measured / Reported SAR numbers-Body distance 0mm										
#7	20MHz/1RB#99	Front	21100	2535	23.81	24.00	1.045	-0.04	0.704	0.735
	20MHz/1RB#99	Back	21100	2535	23.81	24.00	1.045	-0.17	0.655	0.684
	20MHz/1RB#99	Left Edge	21100	2535	23.81	24.00	1.045	-0.03	0.602	0.629
	20MHz/1RB#99	Right Edge	21100	2535	23.81	24.00	1.045	-0.15	0.398	0.416
	20MHz/1RB#99	Top Edge	21100	2535	23.81	24.00	1.045	0.17	0.532	0.556
	20MHz/50RB#0	Front	21100	2535	22.28	23.00	1.180	0.09	0.587	0.693
	20MHz/50RB#0	Back	21100	2535	22.28	23.00	1.180	-0.10	0.512	0.604
	20MHz/50RB#0	Left Edge	21100	2535	22.28	23.00	1.180	-0.20	0.466	0.550
	20MHz/50RB#0	Right Edge	21100	2535	22.28	23.00	1.180	-0.17	0.202	0.238
	20MHz/50RB#0	Top Edge	21100	2535	22.28	23.00	1.180	0.02	0.387	0.457

SAR Values [WIFI 2.4G]

Plot No.	Mode	Test Position	Ch.	Freq. (MHz)	Average Power (dBm)	Tune-Up Limit (dBm)	Scaling Factor	Power Drift (dB)	Measured SAR _{1g} (W/kg)	Reported SAR _{1g} (W/kg)
Measured / Reported SAR numbers-Body distance 0mm										
#8	802.11b	Front	01	2412	13.71	14.00	1.069	-0.16	0.354	0.378
	802.11b	Back	01	2412	13.71	14.00	1.069	-0.17	0.311	0.332
	802.11b	Right Edge	01	2412	13.71	14.00	1.069	0.08	0.274	0.293

Remark:

- 1) The maximum Scaled SAR value is marked in bold.
- 2) When the highest reported SAR for the initial test configuration is adjusted by the ratio of the subsequent test configuration to initial test configuration specified maximum output power and the adjusted SAR is ≤ 1.2 W/kg, SAR test for the other 802.11 modes are not required.

11 Estimated SAR

When the standalone SAR test exclusion is applied to an antenna that transmits simultaneously with other antennas, the standalone SAR must be estimated according to the following to determine simultaneous transmission SAR test exclusion:

- $(\text{max. power of channel, including tune-up tolerance, mW}) / (\text{min. test separation distance, mm}) \cdot [\sqrt{f(\text{GHz})} / x]$
W/kg for test separation distances ≤ 50 mm;

Where $x = 7.5$ for 1-g SAR, and $x = 18.75$ for 10-g SAR.

When the minimum test separation distance is < 5 mm, a distance of 5 mm is applied to determine SAR test exclusion.

Estimated SAR Result

Freq. Band	Frequency (GHz)	Test Position	max. power (dBm)	max. power (mw)	Test Separation (mm)	Estimated
						1g SAR (W/kg)
Bluetooth	2.48	Body	1.00	1.26	5	0.053

12 Simultaneous Transmission Analysis

Per FCC KD B447498 D01, simultaneous transmission SAR test exclusion may be applied when the sum of the 1-g SAR for all the transmitting antenna in a specific a physical test configuration is ≤ 1.6 W/Kg. When the sum is greater than the SAR limit, SAR test exclusion is determined by the SAR to peak location separation ratio.

$$\text{Ratio} = \frac{(\text{SAR}_1 + \text{SAR}_2)^{1.5}}{(\text{peak location separation, mm})} < 0.04$$

The following procedures adopted from “FCC SAR Considerations for Cell Phones with Multiple Transmitters” are applicable to handsets with built-in unlicensed transmitters such as 802.11 a/b/g/n and Bluetooth devices which may simultaneously transmit with the licensed transmitter.

Application Simultaneous Transmission information:

No.	Simultaneous Transmission Configurations	Body
1	GSM+2.4GHz WLAN	Yes
2	WCDMA+2.4GHz WLAN	Yes
3	LTE+2.4GHz WLAN	Yes
4	GSM+ Bluetooth	Yes
5	WCDMA+ Bluetooth	Yes
6	LTE+ Bluetooth	Yes

Note: WLAN2.4G and BT share the same antenna and cannot transmitting at the same time.

Evaluation of Simultaneous SAR

Exposure Position	1	2	3	1+2 Summed 1g SAR (W/kg)	1+3 Summed 1g SAR (W/kg)	SPLSR
	MAX. WWAN Reported SAR	MAX. WLAN2.4G Reported SAR	Bluetooth			
	SAR _{1g} (W/kg)	SAR _{1g} (W/kg)	SAR _{1g} (W/kg)			
Front	0.735	0.378	0.053	1.113	0.788	N/A
Back	0.684	0.332	0.053	1.016	0.737	N/A
Left edge	0.629	/	/	0.629	0.629	N/A
Right edge	0.416	0.293	0.053	0.709	0.469	N/A
Top edge	0.556	/	/	0.556	0.556	N/A
Bottom edge	/	/	/	/	/	N/A

MAX. $\Sigma \text{SAR}_{1g} = 1.113 \text{ W/kg} < 1.6 \text{ W/kg}$, so the Simultaneous transmission SAR with volume scan are not required.

13 Measurement Uncertainty

When the highest measured 1-g SAR within a frequency band is $< 1.5 \text{ W/kg}$, the extensive SAR measurement uncertainty analysis described in IEEE Std 1528-2013 is not required in SAR reports submitted for equipment approval. to KDB 865664D01.

Appendix A. EUT Photos and Test Setup Photos



Front side(0mm)



Back side(0mm)



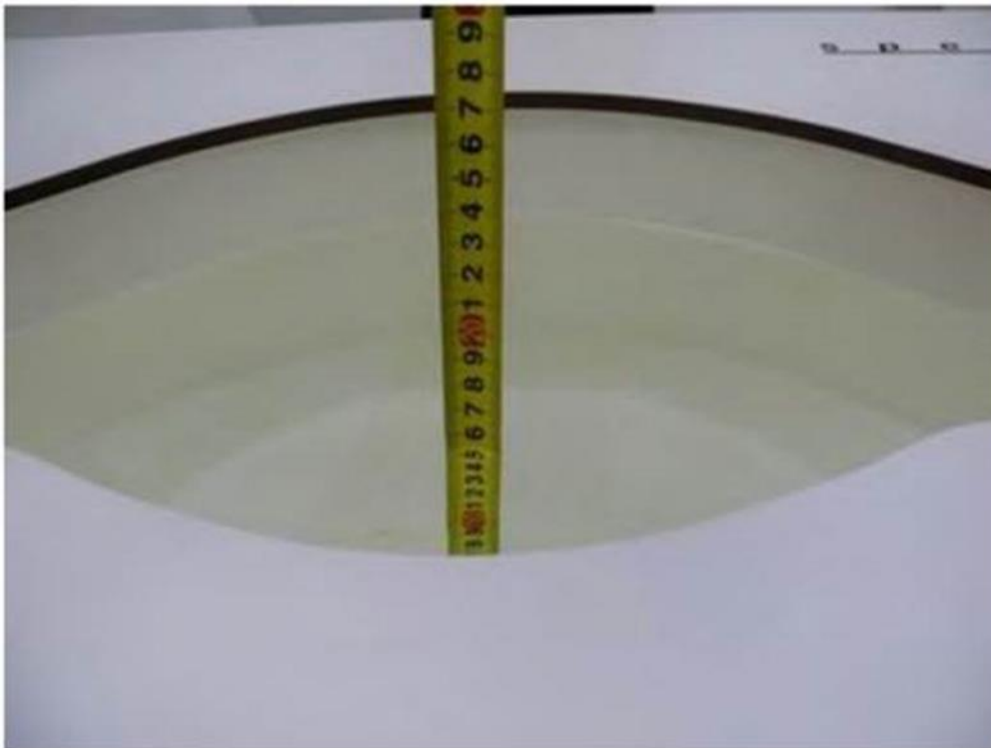
Left side(0mm)



Right side(0mm)



Top edge(0mm)



Liquid depth in the body phantom

Appendix B. Plots of SAR System Check

835MHz System Check

Date: 12/10/2024

DUT: Dipole 835 MHz; Type: D835V2; Serial: 484

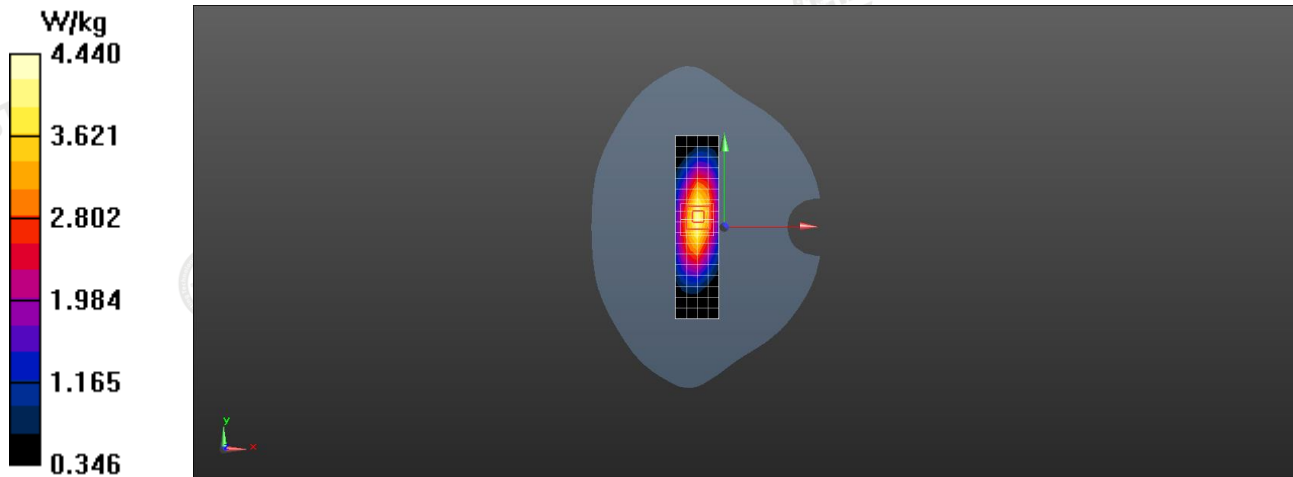
Communication System: CW; Frequency: 835 MHz; Duty Cycle: 1:1

Medium parameters used: $f = 835 \text{ MHz}$; $\sigma = 0.892 \text{ S/m}$; $\epsilon_r = 42.336$; $\rho = 1000 \text{ kg/m}^3$

Phantom section: Flat Section

DASY5 Configuration:

- Probe: EX3DV4 –SN3842; ConvF(9.01, 9.01, 9.01); Calibrated: September. 19, 2024;
- Sensor-Surface: 2mm (Mechanical Surface Detection)
- Electronics: DAE4 Sn1315; Calibrated: 09/19/2024
- Phantom: Twin-SAM V8.0 ; Type: QD 000 P41 AA; Serial: 1974
- DASY52 52.10.2(1495); SEMCAD X 14.6.12(7450)

Area Scan (5x18x1): Measured grid: $dx=15 \text{ mm}$, $dy=15 \text{ mm}$ Maximum value of SAR (measured) = 4.25 W/kg **Zoom Scan (5x5x7)/Cube 0:** Measurement grid: $dx=8\text{mm}$, $dy=8\text{mm}$, $dz=5\text{mm}$ Reference Value = 65.32 V/m ; Power Drift = 0.04 dB Peak SAR (extrapolated) = 5.23 W/kg **SAR(1 g) = 1.15 W/kg ; SAR(10 g) = 0.85 W/kg** Maximum value of SAR (measured) = 4.44 W/kg 

System Performance Check 835MHz 125mW

1900MHz System Check

Date: 12/12/2024

DUT: Dipole 1900 MHz; Type: D1900V2; Serial: 5d002

Communication System: CW; Frequency: 1900 MHz; Duty Cycle: 1:1

Medium parameters used: $f = 1900$ MHz; $\sigma = 1.375$ S/m; $\epsilon_r = 41.187$; $\rho = 1000$ kg/m³

Phantom section: Flat Section

DASY5 Configuration:

- Probe: EX3DV4 - SN3842; ConvF(7.67, 7.67, 7.67); Calibrated: September. 19, 2024
- Sensor-Surface: 2mm (Mechanical Surface Detection)
- Electronics: DAE4 Sn1315; Calibrated: 09/19/2024
- Phantom: Twin-SAM V8.0 ; Type: QD 000 P41 AA; Serial: 1974
- DASY52 52.10.2(1495); SEMCAD X 14.6.12(7450)

Area Scan (4x11x1): Measurement grid: dx=15 mm, dy=15 mm

Maximum value of SAR (measured) = 9.52 W/kg

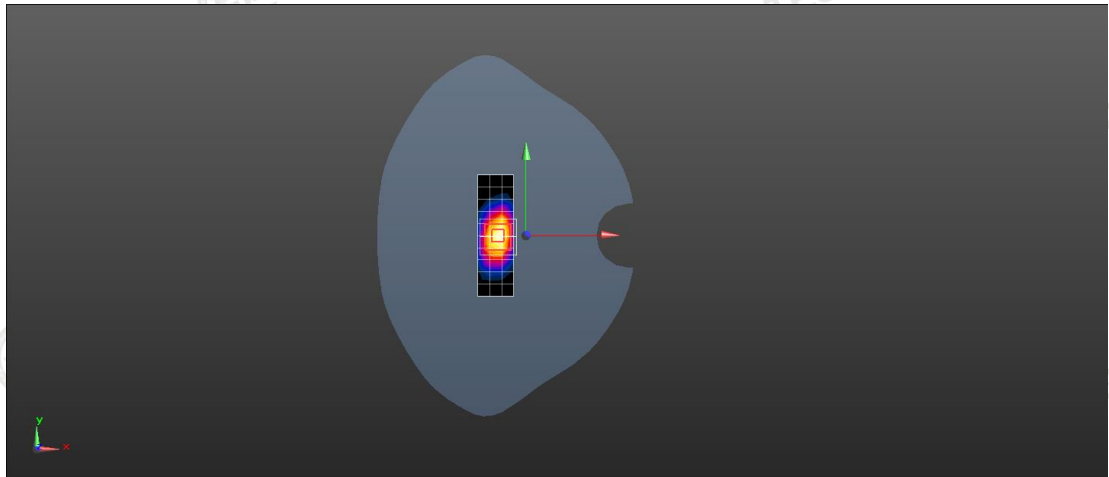
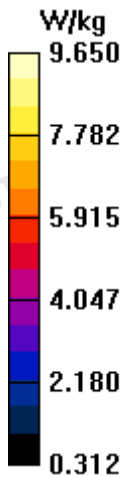
Zoom Scan (5x5x7)/Cube 0: Measurement grid: dx=8mm, dy=8mm, dz=5mm

Reference Value = 87.96 V/m; Power Drift = 0.14 dB

Peak SAR (extrapolated) = 12.3 W/kg

SAR(1 g) = 5.38 W/kg; SAR(10 g) = 2.74 W/kg

Maximum value of SAR (measured) = 9.65 W/kg



System Performance Check 1900MHz 125mW

2450MHz System Check

Date: 12/17/2024

DUT: Dipole 2450 MHz; Type: D2450V2; Serial: 745

Communication System: CW; Frequency: 2450 MHz; Duty Cycle: 1:1

Medium parameters used: $f = 2450$ MHz; $\sigma = 1.793$ S/m; $\epsilon_r = 40.118$; $\rho = 1000$ kg/m³

Phantom section: Flat Section

DASY5 Configuration:

- Probe: EX3DV4 - SN3842; ConvF(7.35, 7.35, 7.35); Calibrated: September. 19, 2024
- Sensor-Surface: 2mm (Mechanical Surface Detection)
- Electronics: DAE4 Sn1315; Calibrated: 09/19/2024
- Phantom: Twin-SAM V8.0 ; Type: QD 000 P41 AA; Serial: 1974
- DASY52 52.10.2(1495); SEMCAD X 14.6.12(7450)

Area Scan (4x8x1): Measurement grid: dx=12 mm, dy=12 mm

Maximum value of SAR (Measurement) = 15.2 W/kg

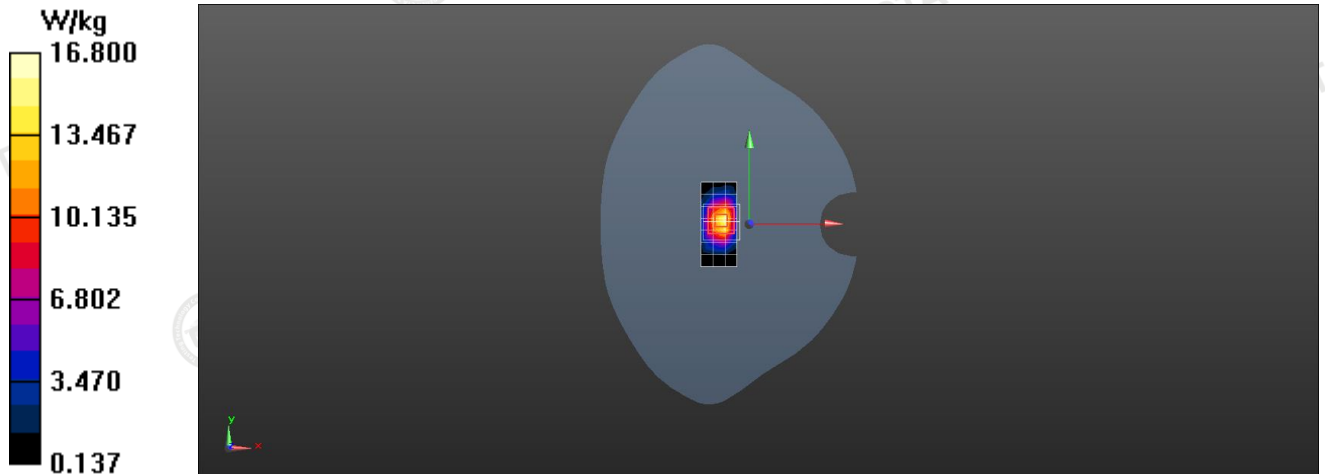
Zoom Scan (7x7x7)/Cube 0: Measurement grid: dx=5mm, dy=5mm, dz=5mm

Reference Value = 80.12 V/m; Power Drift = -0.07 dB

Peak SAR (extrapolated) = 24.2 W/kg

SAR(1 g) = 7.11 W/kg; SAR(10 g) = 3.12 W/kg

Maximum value of SAR (measured) = 16.8 W/kg



System Performance Check 2450MHz 125mW

2600MHz System Check

Date: 12/19/2024

DUT: Dipole 2600 MHz; Type: D2600V2; Serial: 1073

Communication System: CW; Frequency: 2600 MHz; Duty Cycle: 1:1

Medium parameters used: $f = 2600$ MHz; $\sigma = 2.032$ S/m; $\epsilon_r = 38.843$; $\rho = 1000$ kg/m³

Phantom section: Flat Section

DASY5 Configuration:

- Probe: EX3DV4 - SN3842; ConvF(7.17, 7.17, 7.17); Calibrated: September. 19, 2024
- Sensor-Surface: 2mm (Mechanical Surface Detection)
- Electronics: DAE4 Sn1315; Calibrated: 09/19/2024
- Phantom: Twin-SAM V8.0 ; Type: QD 000 P41 AA; Serial: 1974
- DASY52 52.10.2(1495); SEMCAD X 14.6.12(7450)

Area Scan (4x8x1): Measurement grid: dx=12 mm, dy=12 mm

Maximum value of SAR (measured) = 11.4 W/kg

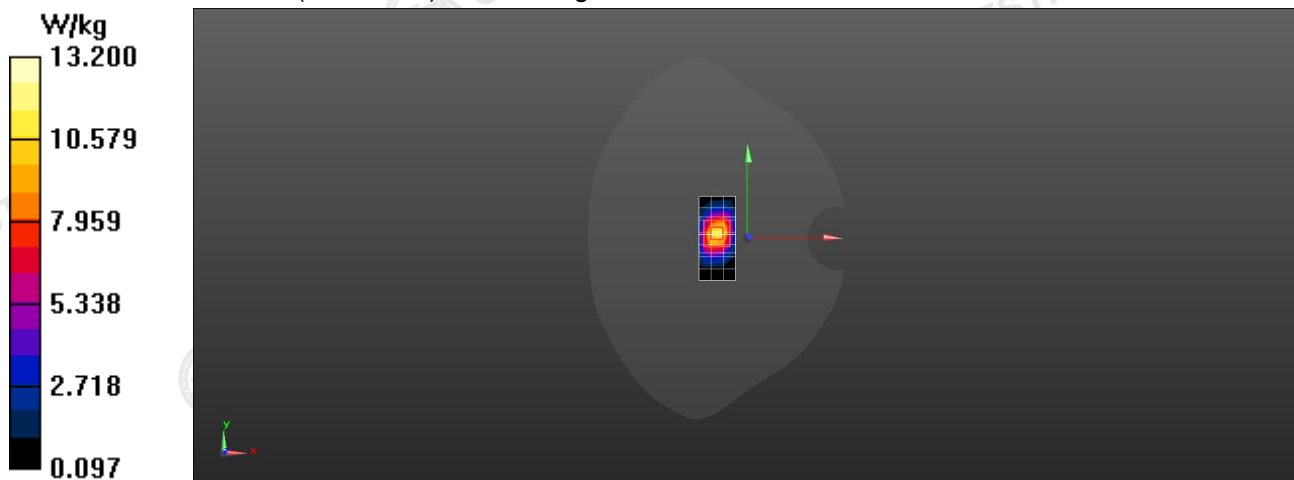
Zoom Scan (7x7x7)/Cube 0: Measurement grid: dx=5mm, dy=5mm, dz=5mm

Reference Value = 92.74 V/m; Power Drift = 0.09 dB

Peak SAR (extrapolated) = 18.9 W/kg

SAR(1 g) = 6.85 W/kg; SAR(10 g) = 3.33 W/kg

Maximum value of SAR (measured) = 13.2W/kg



System Performance Check 2600MHz 125mW

Appendix C. Plots of SAR Test Data

#1

Date: 12/10/2024

GSM850_GPRS(3 TX slots)_ Front _0mm_Ch190

Communication System: UID 0, Generic GSM (0); Frequency: 836.6 MHz; Duty Cycle: 1:2.77

Medium parameters used: $f = 836.6$ MHz; $\sigma = 0.918$ S/m; $\epsilon_r = 40.125$; $\rho = 1000$ kg/m³

Phantom section: Flat Section

DASY5 Configuration:

- Probe: EX3DV4 - SN3842; ConvF(9.01, 9.01, 9.01); Calibrated: September. 19, 2024
- Sensor-Surface: 2mm (Mechanical Surface Detection)
- Electronics: DAE4 Sn1315; Calibrated: 09/19/2024
- Phantom: Twin-SAM V8.0 ; Type: QD 000 P41 AA; Serial: 1974
- DASY52 52.10.2(1495); SEMCAD X 14.6.12(7450)

Front /Area Scan (8x13x1): Measurement grid: dx=15 mm, dy=15 mm

Maximum value of SAR (measured) = 0.644 W/kg

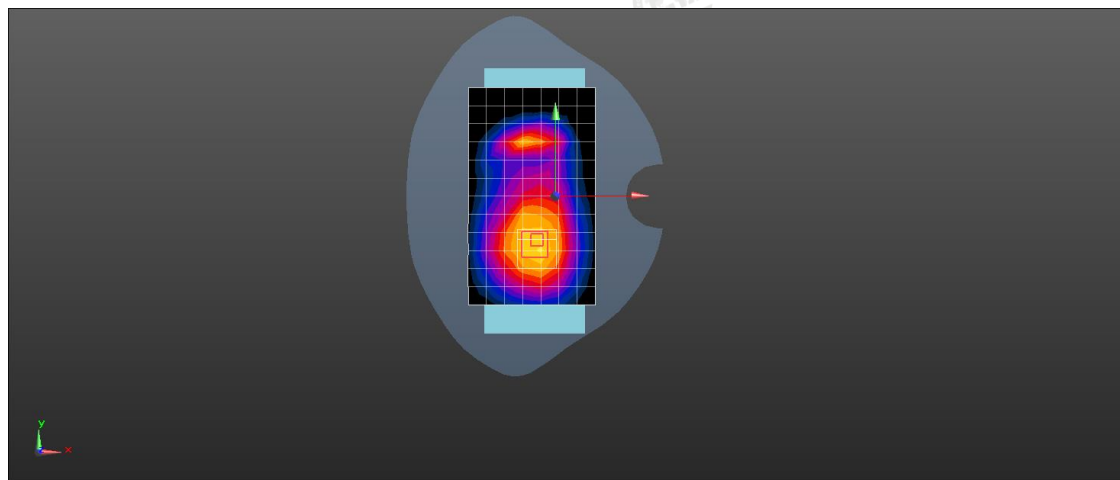
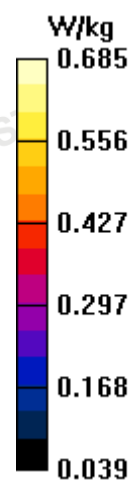
Front /Zoom Scan (5x5x7)/Cube 0: Measurement grid: dx=8mm, dy=8mm, dz=5mm

Reference Value = 6.245 V/m; Power Drift = 0.08 dB

Peak SAR (extrapolated) = 1.12 W/kg

SAR(1 g) = 0.587 W/Kg; SAR(10 g) = 0.362 W/Kg

Maximum value of SAR (measured) = 0.685 W/kg



#2

Date: 12/12/2024

PCS1900_GPRS(2 TX slots)_ Front _0mm_Ch810

Communication System: UID 0, Generic GSM (0); Frequency: 1909.8 MHz; Duty Cycle: 1:4.15

Medium parameters used: $f = 1909.8$ MHz; $\sigma = 1.394$ S/m; $\epsilon_r = 40.639$; $\rho = 1000$ kg/m³

Phantom section: Flat Section

DASY5 Configuration:

- Probe: EX3DV4 - SN3842; ConvF(7.67, 7.67, 7.67); Calibrated: September. 19, 2024
- Sensor-Surface: 2mm (Mechanical Surface Detection)
- Electronics: DAE4 Sn1315; Calibrated: 09/19/2024
- Phantom: Twin-SAM V8.0 ; Type: QD 000 P41 AA; Serial: 1974
- DASY52 52.10.2(1495); SEMCAD X 14.6.12(7450)

Front /Area Scan (8x13x1): Measurement grid: dx=15 mm, dy=15 mm

Maximum value of SAR (measured) = 0.753 W/kg

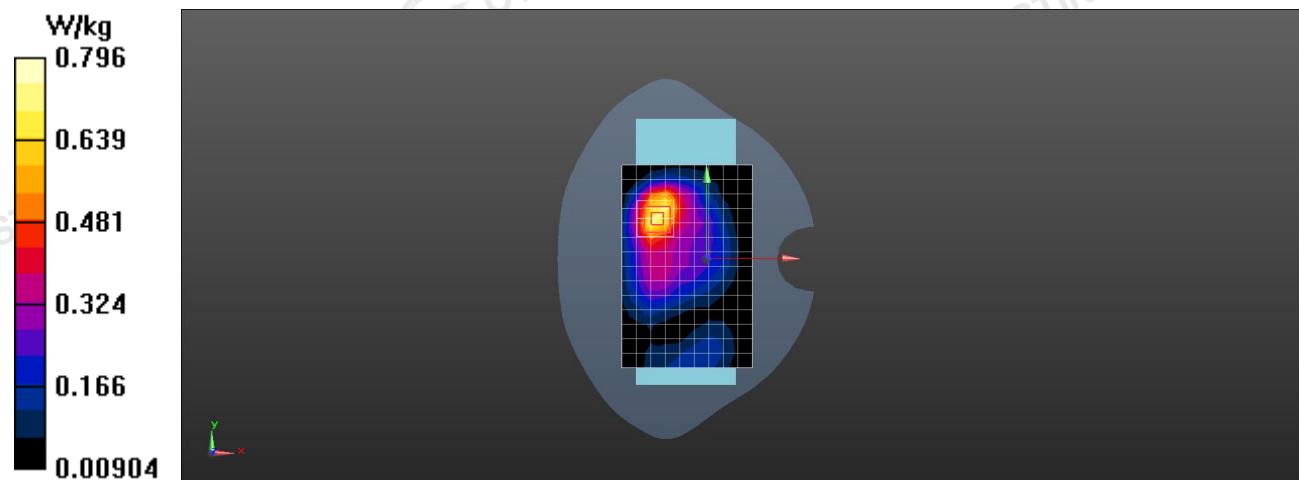
Front /Zoom Scan (5x5x7)/Cube 0: Measurement grid: dx=8mm, dy=8mm, dz=5mm

Reference Value = 4.448 V/m; Power Drift = -0.15 dB

Peak SAR (extrapolated) = 1.63 W/kg

SAR(1 g) = 0.462 W/Kg; SAR(10 g) = 0.314 W/Kg

Maximum value of SAR (measured) = 0.796 W/kg



#3

Date: 12/12/2024

WCDMA Band II_RMC 12.2K_ Front _0mm_Ch9400

Communication System: UID 0, Generic WCDMA (0); Frequency: 1880 MHz; Duty Cycle: 1:1

Medium parameters used: $f = 1880$ MHz; $\sigma = 1.335$ S/m; $\epsilon_r = 41.782$; $\rho = 1000$ kg/m³

Phantom section: Flat Section

DASY5 Configuration:

- Probe: EX3DV4 - SN3842; ConvF(7.67, 7.67, 7.67); Calibrated: September. 19, 2024
- Sensor-Surface: 2mm (Mechanical Surface Detection)
- Electronics: DAE4 Sn1315; Calibrated: 09/19/2024
- Phantom: Twin-SAM V8.0 ; Type: QD 000 P41 AA; Serial: 1974
- DASY52 52.10.2(1495); SEMCAD X 14.6.12(7450)

Front /Area Scan (8x13x1): Measurement grid: dx=15 mm, dy=15 mm

Maximum value of SAR (measured) = 0.810 W/kg

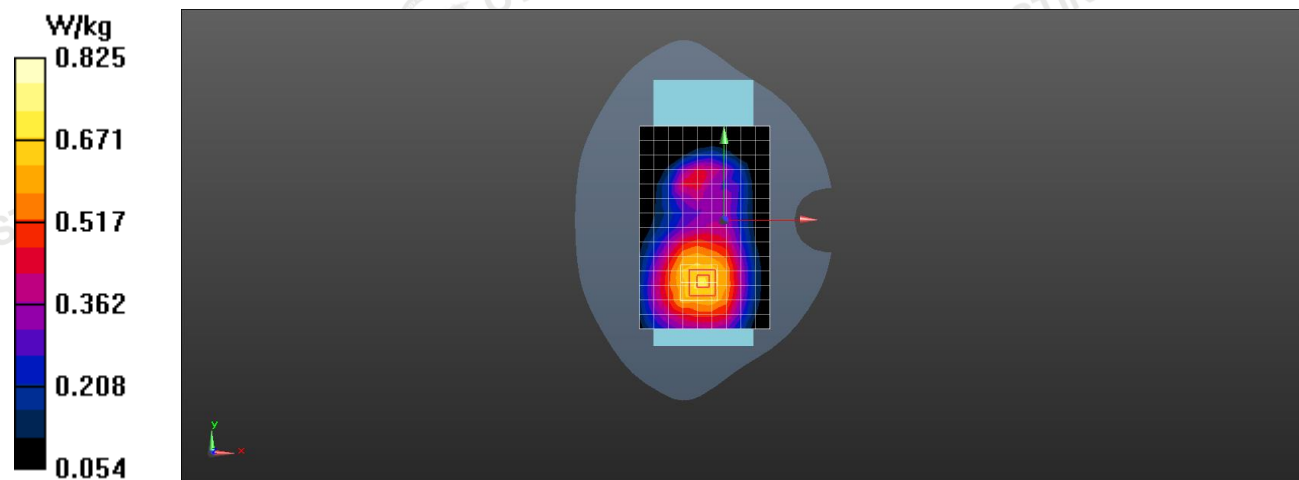
Front /Zoom Scan (5x5x7)/Cube 0: Measurement grid: dx=8mm, dy=8mm, dz=5mm

Reference Value = 7.865 V/m; Power Drift = 0.01 dB

Peak SAR (extrapolated) = 1.98 W/kg

SAR(1 g) = 0.415 W/Kg; SAR(10 g) = 0.274 W/Kg

Maximum value of SAR (measured) = 0.825 W/kg



#4

Date: 12/10/2024

WCDMA Band V_ RMC 12.2K_ Front _0mm_Ch4182

Communication System: UID 0, Generic WCDMA (0); Frequency: 836.4 MHz; Duty Cycle: 1:1

Medium parameters used: $f = 836.4$ MHz; $\sigma = 0.926$ S/m; $\epsilon_r = 39.685$; $\rho = 1000$ kg/m³

Phantom section: Flat Section

DASY5 Configuration:

- Probe: EX3DV4 - SN3842; ConvF(9.01, 9.01, 9.01); Calibrated: September. 19, 2024
- Sensor-Surface: 2mm (Mechanical Surface Detection)
- Electronics: DAE4 Sn1315; Calibrated: 09/19/2024
- Phantom: Twin-SAM V8.0 ; Type: QD 000 P41 AA; Serial: 1974
- DASY52 52.10.2(1495); SEMCAD X 14.6.12(7450)

Front /Area Scan (8x13x1): Measurement grid: dx=15 mm, dy=15 mm

Maximum value of SAR (measured) = 0.677 W/kg

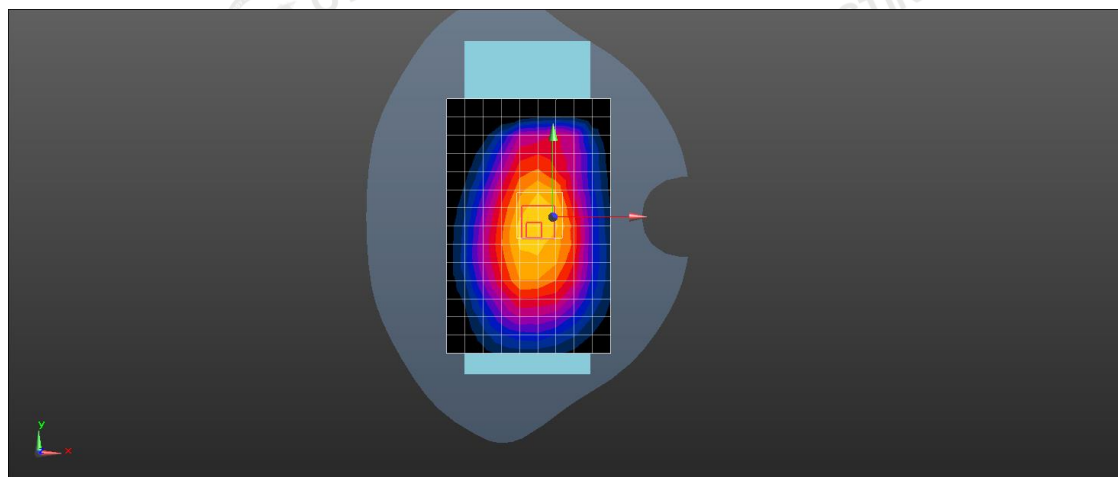
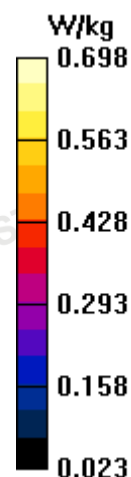
Front /Zoom Scan (5x5x7)/Cube 0: Measurement grid: dx=8mm, dy=8mm, dz=5mm

Reference Value = 3.125 V/m; Power Drift = -0.05 dB

Peak SAR (extrapolated) = 0.97W/Kg

SAR(1 g) = 0.532 W/Kg; SAR(10 g) = 0.396 W/Kg

Maximum value of SAR (measured) = 0.698 W/kg



#5

Date: 12/12/2024

LTE Band 2_20MHz/1RB#0_Front_0mm_Ch18900

Communication System: UID 0, Generic LTE (0); Frequency: 1880 MHz; Duty Cycle: 1:1

Medium parameters used: $f = 1880$ MHz; $\sigma = 1.335$ S/m; $\epsilon_r = 41.782$; $\rho = 1000$ kg/m³

Phantom section: Flat Section

DASY5 Configuration:

- Probe: EX3DV4 - SN3842; ConvF(7.67, 7.67, 7.67); Calibrated: September. 19, 2024
- Sensor-Surface: 2mm (Mechanical Surface Detection)
- Electronics: DAE4 Sn1315; Calibrated: 09/19/2024
- Phantom: Twin-SAM V8.0 ; Type: QD 000 P41 AA; Serial: 1974
- DASY52 52.10.2(1495); SEMCAD X 14.6.12(7450)

Front /Area Scan (8x13x1): Measurement grid: dx=15 mm, dy=15 mm

Maximum value of SAR (measured) = 0.754 W/kg

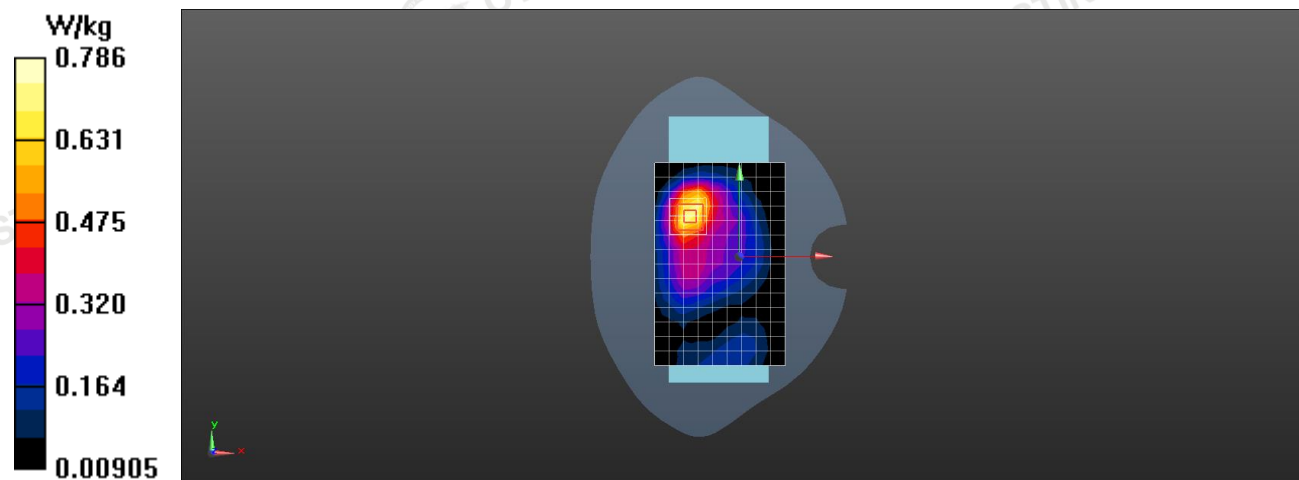
Front /Zoom Scan (5x5x7)/Cube 0: Measurement grid: dx=8mm, dy=8mm, dz=5mm

Reference Value = 3.254 V/m; Power Drift = -0.01 dB

Peak SAR (extrapolated) = 1.58 W/kg

SAR(1 g) = 0.448 W/kg; SAR(10 g) = 0.302W/kg

Maximum value of SAR (measured) = 0.786 W/kg



#6

Date: 12/10/2024

LTE Band 5_10MHz/1RB#0_Front_0mm_Ch20600

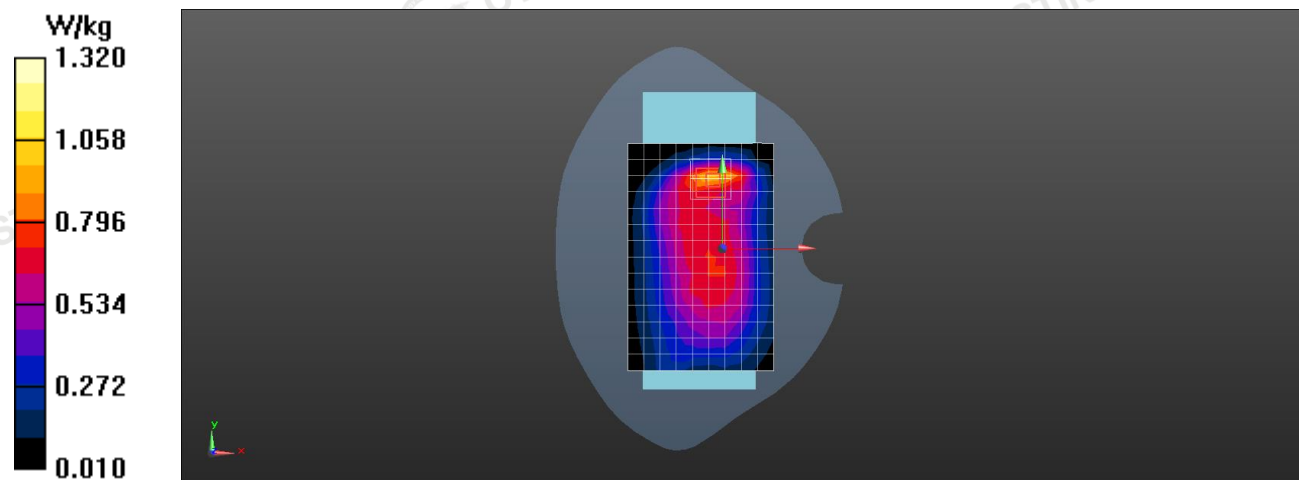
Communication System: UID 0, Generic LTE (0); Frequency: 844 MHz; Duty Cycle: 1:1

Medium parameters used: $f = 844 \text{ MHz}$; $\sigma = 0.934 \text{ S/m}$; $\epsilon_r = 40.254$; $\rho = 1000 \text{ kg/m}^3$

Phantom section: Flat Section

DASY5 Configuration:

- Probe: EX3DV4 - SN3842; ConvF(9.01, 9.01, 9.01); Calibrated: September. 19, 2024
- Sensor-Surface: 2mm (Mechanical Surface Detection)
- Electronics: DAE4 Sn1315; Calibrated: 09/19/2024
- Phantom: Twin-SAM V8.0 ; Type: QD 000 P41 AA; Serial: 1974
- DASY52 52.10.2(1495); SEMCAD X 14.6.12(7450)

Front /Area Scan (8x13x1): Measurement grid: $dx=15 \text{ mm}$, $dy=15 \text{ mm}$ Maximum value of SAR (measured) = 1.22 W/kg **Front /Zoom Scan (5x5x7)/Cube 0:** Measurement grid: $dx=8\text{mm}$, $dy=8\text{mm}$, $dz=5\text{mm}$ Reference Value = 3.254 V/m ; Power Drift = -0.14 dB Peak SAR (extrapolated) = 2.06 W/kg **SAR(1 g) = 0.511 W/kg ; SAR(10 g) = 0.398 W/kg** Maximum value of SAR (measured) = 1.32 W/kg 

#7

Date: 12/19/2024

LTE Band 7_20MHz/1RB#99_Front_0mm_Ch21100

Communication System: UID 0, Generic LTE (0); Frequency: 2535 MHz; Duty Cycle: 1:1

Medium parameters used: $f = 2535$ MHz; $\sigma = 1.948$ S/m; $\epsilon_r = 39.874$; $\rho = 1000$ kg/m³

Phantom section: Flat Section

DASY5 Configuration:

- Probe: EX3DV4 - SN3842; ConvF(7.17, 7.17, 7.17); Calibrated: September. 19, 2024
- Sensor-Surface: 2mm (Mechanical Surface Detection)
- Electronics: DAE4 Sn1315; Calibrated: 09/19/2024
- Phantom: Twin-SAM V8.0 ; Type: QD 000 P41 AA; Serial: 1974
- DASY52 52.10.2(1495); SEMCAD X 14.6.12(7450)

Area Scan (8x13x1): Measurement grid: dx=12 mm, dy=12 mm

Maximum value of SAR (measured) = 1.05 W/Kg

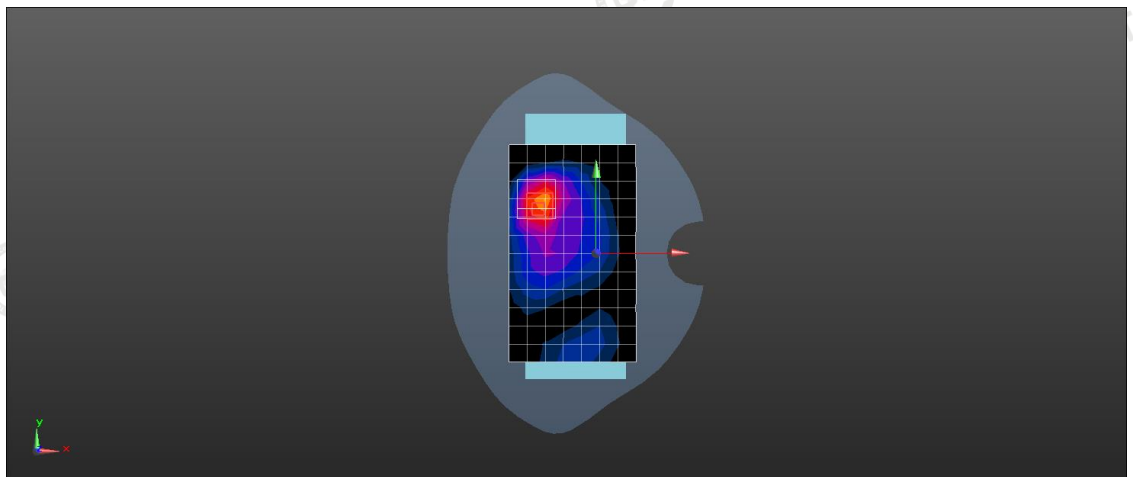
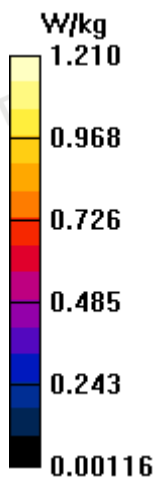
Zoom Scan (7x7x7)/Cube 0: Measurement grid: dx=5mm, dy=5mm, dz=5mm

Reference Value = 8.874 V/m; Power Drift = -0.04 dB

Peak SAR (extrapolated) = 1.74 W/kg

SAR(1 g) = 0.704W/Kg; SAR(10 g) = 0.491 W/Kg

Maximum value of SAR (measured) = 1.21 W/Kg



#8

Date: 12/17/2024

WIFI2.4G_802.11b_Front_0mm_Ch01

Communication System: UID 0, Generic WIFI (0); Frequency: 2412 MHz; Duty Cycle: 1:1

Medium parameters used: $f = 2412$ MHz; $\sigma = 1.763$ S/m; $\epsilon_r = 40.257$; $\rho = 1000$ kg/m³

Phantom section: Flat Section

DASY5 Configuration:

- Probe: EX3DV4 - SN3842; ConvF(7.35, 7.35, 7.35); Calibrated: September. 19, 2024
- Sensor-Surface: 2mm (Mechanical Surface Detection)
- Electronics: DAE4 Sn1315; Calibrated: 09/19/2024
- Phantom: Twin-SAM V8.0 ; Type: QD 000 P41 AA; Serial: 1974
- DASY52 52.10.2(1495); SEMCAD X 14.6.12(7450)

Front /Area Scan (10x15x1): Measurement grid: dx=12 mm, dy=12 mm

Maximum value of SAR (Measurement) = 0.644 W/kg

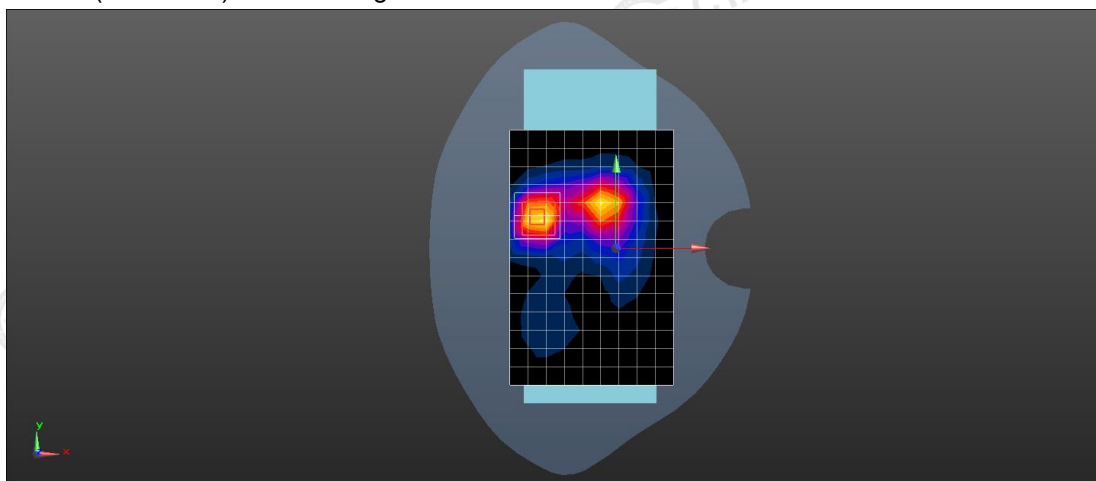
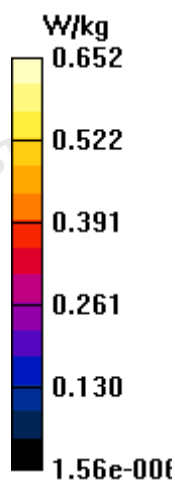
Front /Zoom Scan (7x7x7)/Cube 0: Measurement grid: dx=5mm, dy=5mm, dz=5mm

Reference Value = 4.587 V/m; Power Drift = -0.16 dB

Peak SAR (extrapolated) = 1.13 W/kg

SAR(1 g) = 0.354 W/kg; SAR(10 g) = 0.222 W/kg

Maximum value of SAR (measured) = 0.652 W/kg



Appendix D. DASY System Calibration Certificate



In Collaboration with
TTL s p e a g
 CALIBRATION LABORATORY
 Add: No.52 HuaYuanBei Road, Haidian District, Beijing, 100191, China
 Tel: +86-10-62304633-2117
 E-mail: emf@caict.ac.cn http://www.caict.ac.cn



中国认可
 国际互认
 校准
 CALIBRATION
 CNAS L0570

Client: **The Testing and Technology Center for Industrial Products of Shenzhen customs**

Certificate No: **24J02Z000555**

CALIBRATION CERTIFICATE

Object: EX3DV4 - SN : 3842

Calibration Procedure(s): FF-Z11-004-02
 Calibration Procedures for Dosimetric E-field Probes

Calibration date: September 19, 2024

This calibration Certificate documents the traceability to national standards, which realize the physical units of measurements(SI). The measurements and the uncertainties with confidence probability are given on the following pages and are part of the certificate.

All calibrations have been conducted in the closed laboratory facility: environment temperature(22±3)°C and humidity<70%.

Calibration Equipment used (M&TE critical for calibration)

Primary Standards	ID #	Cal Date(Calibrated by, Certificate No.)	Scheduled Calibration
Power Meter NRP2	106277	19-Oct-23(CTTL, No.J23X11026)	Oct-24
Power sensor NRP8S	104291	19-Oct-23(CTTL, No.J23X11026)	Oct-24
Power sensor NRP8S	104292	19-Oct-23(CTTL, No.J23X11026)	Oct-24
Reference 10dBAttenuator	18N50W-10dB	19-Jan-23(CTTL, No.J23X00212)	Jan-25
Reference 20dBAttenuator	18N50W-20dB	19-Jan-23(CTTL, No.J23X00211)	Jan-25
Reference Probe EX3DV4	SN 7307	28-May-24(SPEAG, No.EX-7307_May24)	May-25
DAE4	SN 771	19-Jan-24(SPEAG, No.DAE4-771_Jan24)	Jan-25
Secondary Standards	ID #	Cal Date(Calibrated by, Certificate No.)	Scheduled Calibration
SignalGenerator MG3700A	6201052605	12-Jun-24(CTTL, No.24J02X005419)	Jun-25
SignalGenerator APSIN26G	181-33A6D0700-1959	26-Mar-24(CTTL, No.24J02X002468)	Mar-25
Network Analyzer E5071C	MY46110673	25-Dec-23(CTTL, No.J23X13425)	Dec-24
Reference 10dBAttenuator	BT0520	11-May-23(CTTL, No.J23X04061)	May-25
Reference 20dBAttenuator	BT0267	11-May-23(CTTL, No.J23X04062)	May-25
OCP DAK-12	SN 1174	25-Oct-23(SPEAG, No.OCP-DAK12-1174_Oct23)	Oct-24

	Name	Function	Signature
Calibrated by:	Yu Zongying	SAR Test Engineer	
Reviewed by:	Lin Jun	SAR Test Engineer	
Approved by:	Qi Dianyuan	SAR Project Leader	

Issued: September 23, 2024

This calibration certificate shall not be reproduced except in full without written approval of the laboratory.



In Collaboration with
s p e a g
CALIBRATION LABORATORY



Add: No.52 HuaYuanBei Road, Haidian District, Beijing, 100191, China
Tel: +86-10-62304633-2117
E-mail: emf@caict.ac.cn http://www.caict.ac.cn

Glossary:

TSL	tissue simulating liquid
NORM _{x,y,z}	sensitivity in free space
ConvF	sensitivity in TSL / NORM _{x,y,z}
DCP	diode compression point
CF	crest factor (1/duty_cycle) of the RF signal
A,B,C,D	modulation dependent linearization parameters
Polarization Φ	Φ rotation around probe axis
Polarization θ	θ rotation around an axis that is in the plane normal to probe axis (at measurement center), $\theta=0$ is normal to probe axis

Connector Angle information used in DASY system to align probe sensor X to the robot coordinate system

Calibration is Performed According to the Following Standards:

- IEEE Std 1528-2013, "IEEE Recommended Practice for Determining the Peak Spatial-Averaged Specific Absorption Rate (SAR) in the Human Head from Wireless Communications Devices: Measurement Techniques", June 2013
- IEC 62209-1, "Measurement procedure for the assessment of Specific Absorption Rate (SAR) from hand-held and body-mounted devices used next to the ear (frequency range of 300 MHz to 6 GHz)", July 2016
- IEC 62209-2, "Procedure to determine the Specific Absorption Rate (SAR) for wireless communication devices used in close proximity to the human body (frequency range of 30 MHz to 6 GHz)", March 2010
- KDB 865664, "SAR Measurement Requirements for 100 MHz to 6 GHz"

Methods Applied and Interpretation of Parameters:

- NORM_{x,y,z}**: Assessed for E-field polarization $\theta=0$ (fs900MHz in TEM-cell; f>1800MHz: waveguide). NORM_{x,y,z} are only intermediate values, i.e., the uncertainties of NORM_{x,y,z} does not effect the E^2 -field uncertainty inside TSL (see below ConvF).
- NORM(f)_{x,y,z} = NORM_{x,y,z}* frequency_response** (see Frequency Response Chart). This linearization is implemented in DASY4 software versions later than 4.2. The uncertainty of the frequency response is included in the stated uncertainty of ConvF.
- DCP_{x,y,z}**: DCP are numerical linearization parameters assessed based on the data of power sweep (no uncertainty required). DCP does not depend on frequency nor media.
- PAR**: PAR is the Peak to Average Ratio that is not calibrated but determined based on the signal characteristics.
- A_{x,y,z}; B_{x,y,z}; C_{x,y,z}; VR_{x,y,z}; A,B,C** are numerical linearization parameters assessed based on the data of power sweep for specific modulation signal. The parameters do not depend on frequency nor media. VR is the maximum calibration range expressed in RMS voltage across the diode.
- ConvF and Boundary Effect Parameters**: Assessed in flat phantom using E-field (or Temperature Transfer Standard for fs800MHz) and inside waveguide using analytical field distributions based on power measurements for f>800MHz. The same setups are used for assessment of the parameters applied for boundary compensation (alpha, depth) of which typical uncertainty valued are given. These parameters are used in DASY4 software to improve probe accuracy close to the boundary. The sensitivity in TSL corresponds to NORM_{x,y,z}* ConvF whereby the uncertainty corresponds to that given for ConvF. A frequency dependent ConvF is used in DASY version 4.4 and higher which allows extending the validity from ± 50 MHz to ± 100 MHz.
- Spherical isotropy (3D deviation from isotropy)**: in a field of low gradients realized using a flat phantom exposed by a patch antenna.
- Sensor Offset**: The sensor offset corresponds to the offset of virtual measurement center from the probe tip (on probe axis). No tolerance required.
- Connector Angle**: The angle is assessed using the information gained by determining the NORM_x (no uncertainty required).



In Collaboration with
s p e a g
 CALIBRATION LABORATORY



Add: No.52 HunYuanBei Road, Haidian District, Beijing, 100191, China
 Tel: +86-10-62304633-2117
 E-mail: ernf@caict.ac.cn http://www.caict.ac.cn

DASY/EASY – Parameters of Probe: EX3DV4 – SN:3842

Basic Calibration Parameters

	Sensor X	Sensor Y	Sensor Z	Unc ($k=2$)
Norm($\mu V/(V/m)^2$) ^A	0.34	0.51	0.43	$\pm 10.0\%$
DCP(mV) ^B	104.5	102.1	100.9	

Modulation Calibration Parameters

UID	Communication System Name		A dB	B dB· μV	C	D dB	VR mV	Unc ^E ($k=2$)
0	CW	X	0.0	0.0	1.0	0.00	136.2	$\pm 2.1\%$
		Y	0.0	0.0	1.0		172.5	
		Z	0.0	0.0	1.0		154.2	

The reported uncertainty of measurement is stated as the standard uncertainty of Measurement multiplied by the coverage factor $k=2$, which for a normal distribution corresponds to a coverage probability of approximately 95%.

^A The uncertainties of Norm X, Y, Z do not affect the E^2 -field uncertainty inside TSL (see Page 4).

^B Numerical linearization parameter; uncertainty not required.

^E Uncertainty is determined using the max. deviation from linear response applying rectangular distribution and is expressed for the square of the field value.



In Collaboration with
s p e a g
CALIBRATION LABORATORY

CAICT

Add: No.52 HuaYuanBei Road, Haidian District, Beijing, 100191, China
Tel: +86-10-62304633-2117
E-mail: cmf@caict.ac.cn http://www.caict.ac.cn

DASY/EASY – Parameters of Probe: EX3DV4 – SN:3842

Calibration Parameter Determined in Head Tissue Simulating Media

f [MHz] ^C	Relative Permittivity ^F	Conductivity (S/m) ^F	ConvF X	ConvF Y	ConvF Z	Alpha ^G	Depth ^G (mm)	Unct. (k=2)
750	41.9	0.89	9.50	9.50	9.50	0.12	1.31	±12.7%
900	41.5	0.97	9.01	9.01	9.01	0.12	1.39	±12.7%
1750	40.1	1.37	8.00	8.00	8.00	0.17	1.16	±12.7%
1900	40.0	1.40	7.67	7.67	7.67	0.20	1.11	±12.7%
2100	39.8	1.49	7.71	7.71	7.71	0.19	1.20	±12.7%
2450	39.2	1.80	7.35	7.35	7.35	0.39	0.78	±12.7%
2600	39.0	1.96	7.17	7.17	7.17	0.44	0.73	±12.7%

^C Frequency validity above 300 MHz of ±100MHz only applies for DASY v4.4 and higher (Page 2), else it is restricted to ±50MHz. The uncertainty is the RSS of ConvF uncertainty at calibration frequency and the uncertainty for the indicated frequency band. Frequency validity below 300 MHz is ± 10, 25, 40, 50 and 70 MHz for ConvF assessments at 30, 64, 128, 150 and 220 MHz respectively. Above 5 GHz frequency validity can be extended to ± 110 MHz.

^F At frequency up to 6 GHz, the validity of tissue parameters (ϵ and σ) can be relaxed to ±10% if liquid compensation formula is applied to measured SAR values. The uncertainty is the RSS of the ConvF uncertainty for indicated target tissue parameters.

^G Alpha/Depth are determined during calibration. SPEAG warrants that the remaining deviation due to the boundary effect after compensation is always less than ± 1% for frequencies below 3 GHz and below ± 2% for the frequencies between 3-6 GHz at any distance larger than half the probe tip diameter from the boundary.

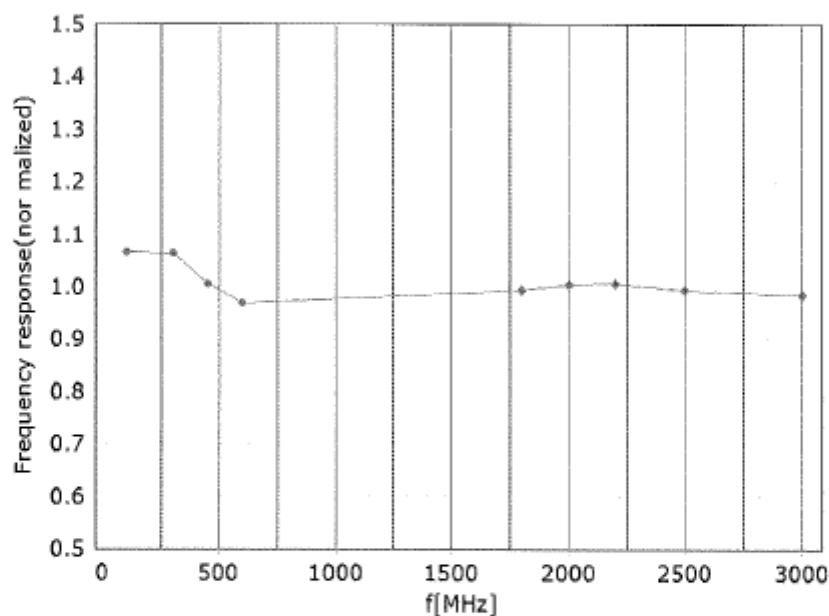


In Collaboration with
s p e a g
CALIBRATION LABORATORY

Add: No.52 HuaYuanBei Road, Haidian District, Beijing, 100191, China
Tel: +86-10-62304633-2117
E-mail: emf@caict.ac.cn <http://www.caict.ac.cn>

CAICT

Frequency Response of E-Field (TEM-Cell: ifi110 EXX, Waveguide: R22)



* TEM

* R22

Uncertainty of Frequency Response of E-field: $\pm 7.4\%$ ($k=2$)



In Collaboration with
s p e a g
 CALIBRATION LABORATORY

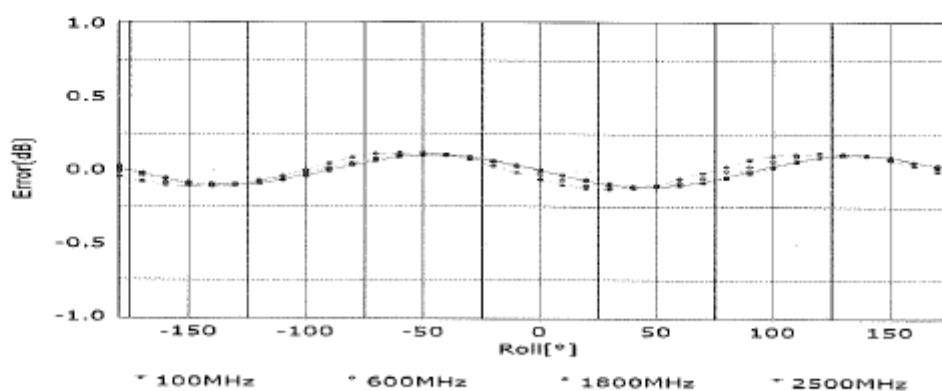
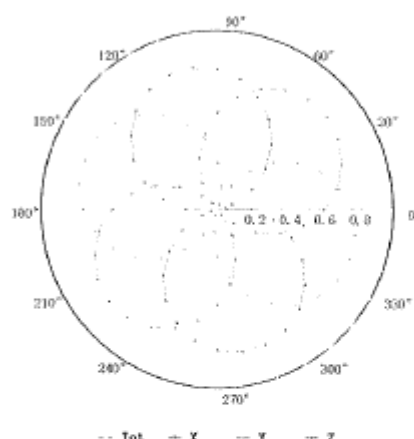
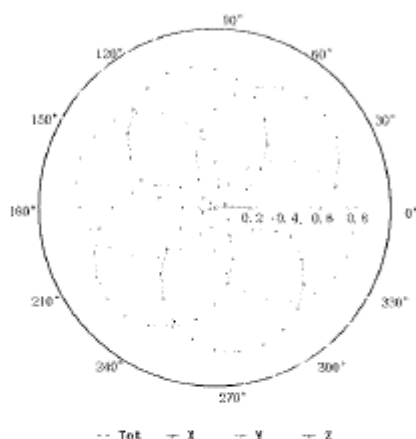
CAICT

Add: No.52 HuaYuanBei Road, Haidian District, Beijing, 100191, China
 Tel: +86-10-62304633-2117
 E-mail: emf@caict.ac.cn http://www.caict.ac.cn

Receiving Pattern (Φ), $\theta=0^\circ$

f=600 MHz, TEM

f=1800 MHz, R22



Uncertainty of Axial Isotropy Assessment: $\pm 1.2\%$ ($k=2$)

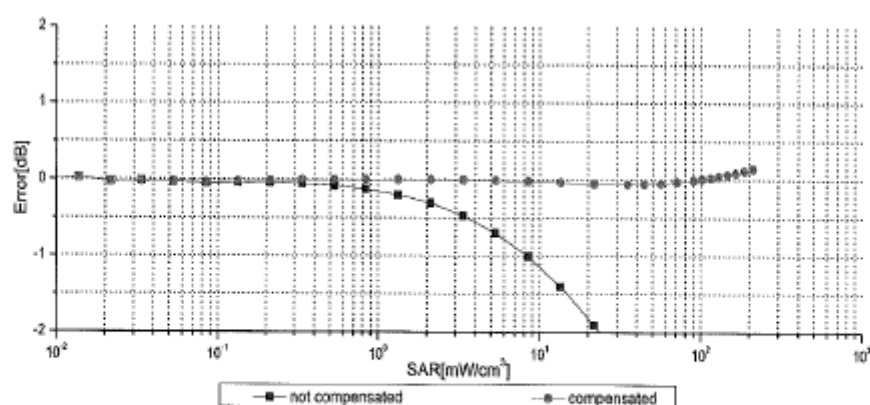
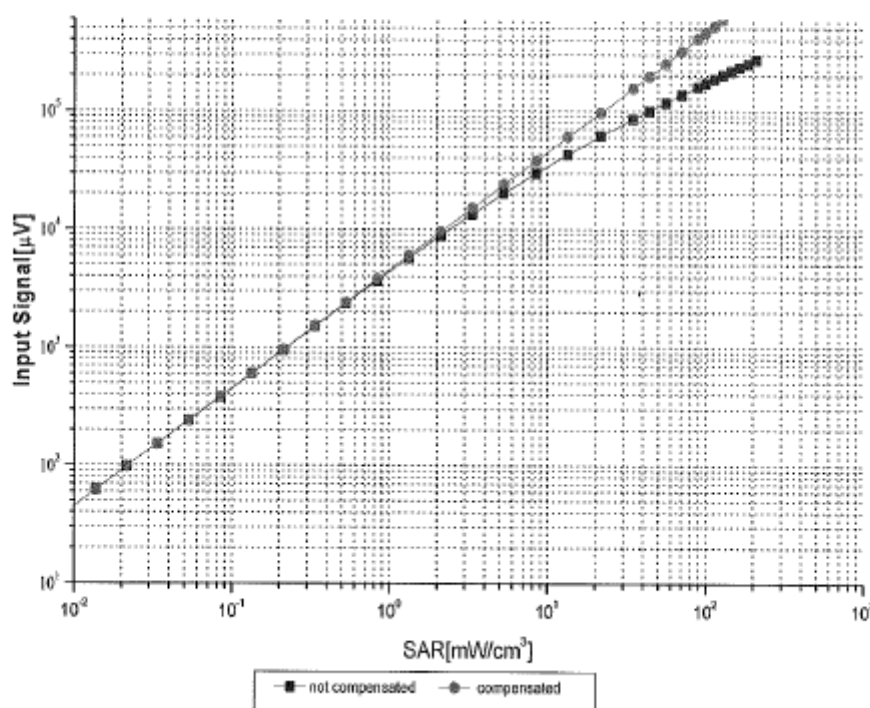


In Collaboration with
s p e a g
CALIBRATION LABORATORY



Add: No.52 HuaYuanBei Road, Haidian District, Beijing, 100191, China
Tel: +86-10-62304633-2117
E-mail: em@caict.ac.cn <http://www.caict.ac.cn>

Dynamic Range f(SAR_{head}) (TEM cell, f = 900 MHz)



Uncertainty of Linearity Assessment: $\pm 0.9\%$ ($k=2$)



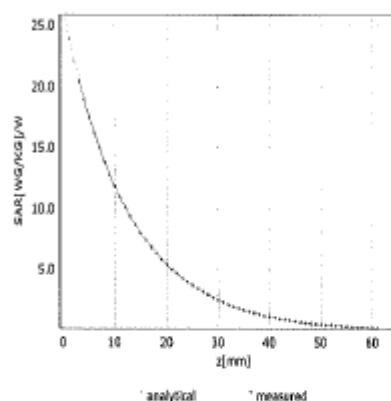
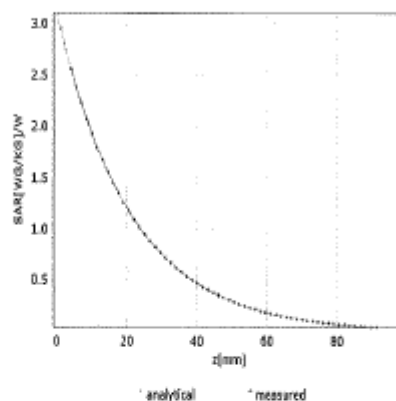
Add: No.52 HuaYuanBei Road, Haidian District, Beijing, 100191, China
 Tel: +86-10-62304633-2117
 E-mail: emf@caict.ac.cn http://www.caict.ac.cn



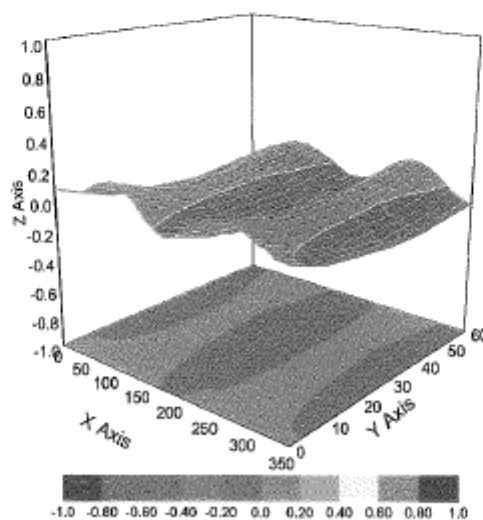
Conversion Factor Assessment

$f=750$ MHz, WGLS R9(H_convF)

$f=1750$ MHz, WGLS R22(H_convF)



Deviation from Isotropy in Liquid



Uncertainty of Spherical Isotropy Assessment: $\pm 3.2\%$ ($k=2$)



In Collaboration with
s p e a g
CALIBRATION LABORATORY



Add: No.52 HuaYuanBei Road, Haidian District, Beijing, 100191, China
Tel: +86-10-62304633-2117
E-mail: cmf@caict.ac.cn <http://www.caict.ac.cn>

DASY/EASY – Parameters of Probe: EX3DV4 – SN:3842

Other Probe Parameters

Sensor Arrangement	Triangular
Connector Angle (°)	58.3
Mechanical Surface Detection Mode	enabled
Optical Surface Detection Mode	disable
Probe Overall Length	337mm
Probe Body Diameter	10mm
Tip Length	9mm
Tip Diameter	2.5mm
Probe Tip to Sensor X Calibration Point	1mm
Probe Tip to Sensor Y Calibration Point	1mm
Probe Tip to Sensor Z Calibration Point	1mm
Recommended Measurement Distance from Surface	1.4mm



Add: No.52 HuaYuanBei Road, Haidian District, Beijing, 100191, China
Tel: +86-10-62304633-2117
E-mail: emf@caict.ac.cn <http://www.caict.ac.cn>



中国认可
国际互认
校准
CALIBRATION
CNAS L0570

Client : The Testing and Technology Center for
Industrial Products of Shenzhen customs

Certificate No: 24J02Z000554

CALIBRATION CERTIFICATE

Object DAE4 - SN: 1315

Calibration Procedure(s) FF-Z11-002-01
Calibration Procedure for the Data Acquisition Electronics
(DAEx)

Calibration date: September 19, 2024

This calibration Certificate documents the traceability to national standards, which realize the physical units of measurements(SI). The measurements and the uncertainties with confidence probability are given on the following pages and are part of the certificate.

All calibrations have been conducted in the closed laboratory facility: environment temperature(22±3)℃ and humidity<70%.

Calibration Equipment used (M&TE critical for calibration)

Primary Standards	ID #	Cal Date(Calibrated by, Certificate No.)	Scheduled Calibration
Process Calibrator 753	1971018	11-Jun-24 (CTTL, No.24J02X005147)	Jun-25

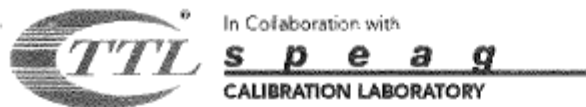
	Name	Function	Signature
Calibrated by:	Yu Zongying	SAR Test Engineer	
Reviewed by:	Lin Jun	SAR Test Engineer	
Approved by:	Qi Dianyuan	SAR Project Leader	

Issued: September 23, 2024

This calibration certificate shall not be reproduced except in full without written approval of the laboratory.

Certificate No: 24J02Z000554

Page 1 of 3



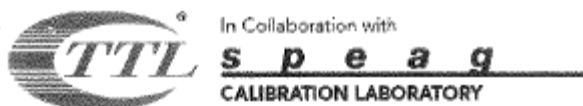
Add: No.52 HuaYuanBei Road, Haidian District, Beijing, 100191, China
Tel: +86-10-62304633-2117
E-mail: cmf@caict.ac.cn <http://www.caict.ac.cn>

Glossary:

DAE data acquisition electronics
Connector angle information used in DASY system to align probe sensor X to the robot coordinate system.

Methods Applied and Interpretation of Parameters:

- *DC Voltage Measurement:* Calibration Factor assessed for use in DASY system by comparison with a calibrated instrument traceable to national standards. The figure given corresponds to the full scale range of the voltmeter in the respective range.
- *Connector angle:* The angle of the connector is assessed measuring the angle mechanically by a tool inserted. Uncertainty is not required.
- The report provide only calibration results for DAE, it does not contain other performance test results.



Add: No.52 HuaYuanBei Road, Haidian District, Beijing, 100191, China
Tel: +86-10-62304633-2117
E-mail: emf@caict.ac.cn <http://www.caict.ac.cn>

DC Voltage Measurement

A/D - Converter Resolution nominal

High Range: 1LSB = 6.1 μ V, full range = -100...+300 mV

Low Range: 1LSB = 61nV, full range = -1.....+3mV

DASY measurement parameters: Auto Zero Time: 3 sec; Measuring time: 3 sec

Calibration Factors	X	Y	Z
High Range	405.173 \pm 0.15% (k=2)	405.003 \pm 0.15% (k=2)	404.959 \pm 0.15% (k=2)
Low Range	3.96164 \pm 0.7% (k=2)	3.97971 \pm 0.7% (k=2)	3.99939 \pm 0.7% (k=2)

Connector Angle

Connector Angle to be used in DASY system	46° \pm 1°
---	--------------



Add: No.52 HuaYuanBei Road, Haidian District, Beijing, 100191
Tel: +86-10-62304633-2117
E-mail: emf@caict.ac.cn http://www.caict.ac.cn



中国认可
国际互认
校准
CALIBRATION
CNAS L0570



Client CTA

Certificate No: J23Z60387

CALIBRATION CERTIFICATE

Object D835V2 - SN: 484

Calibration Procedure(s) FF-Z11-003-01
Calibration Procedures for dipole validation kits

Calibration date: August 25, 2023

This calibration Certificate documents the traceability to national standards, which realize the physical units of measurements (SI). The measurements and the uncertainties with confidence probability are given on the following pages and are part of the certificate.

All calibrations have been conducted in the closed laboratory facility: environment temperature (22±3)°C and humidity<70%.

Calibration Equipment used (M&TE critical for calibration)

Primary Standards	ID #	Cal Date (Calibrated by, Certificate No.)	Scheduled Calibration
Power Meter NRP2	106277	22-Sep-22 (CTTL, No.J22X09561)	Sep-23
Power sensor NRP8S	104291	22-Sep-22 (CTTL, No.J22X09561)	Sep-23
Reference Probe EX3DV4	SN 3617	31-Mar-23(CTTL-SPEAG,No.Z23-60161)	Mar-24
DAE4	SN 1556	11-Jan-23(CTTL-SPEAG,No.Z23-60034)	Jan-24
Secondary Standards	ID #	Cal Date (Calibrated by, Certificate No.)	Scheduled Calibration
Signal Generator E4438C	MY49071430	05-Jan-23 (CTTL, No. J23X00107)	Jan-24
NetworkAnalyzer E5071C	MY46110673	10-Jan-23 (CTTL, No. J23X00104)	Jan-24

	Name	Function	Signature
Calibrated by:	Zhao Jing	SAR Test Engineer	
Reviewed by:	Lin Hao	SAR Test Engineer	
Approved by:	Qi Dianyuan	SAR Project Leader	

Issued: September 1, 2023

This calibration certificate shall not be reproduced except in full without written approval of the laboratory.

Certificate No: J23Z60387

Page 1 of 6



In Collaboration with

s p e a g
CALIBRATION LABORATORY

Add: No.52 HuaYuanBei Road, Haidian District, Beijing, 100191, China
Tel: +86-10-62304633-2117
E-mail: cmf@caict.ac.cn http://www.caict.ac.cn

Glossary:

TSL	tissue simulating liquid
ConvF	sensitivity in TSL / NORM _{x,y,z}
N/A	not applicable or not measured

Calibration is Performed According to the Following Standards:

- a) IEC/IEEE 62209-1528, "Measurement Procedure for The Assessment of Specific Absorption Rate of Human Exposure to Radio Frequency Fields from Hand-held and Body-mounted Wireless Communication Devices- Part 1528: Human Models, Instrumentation and Procedures (Frequency range of 4 MHz to 10 GHz)", October 2020
- b) KDB 865664, "SAR Measurement Requirements for 100 MHz to 6 GHz"

Additional Documentation:

- c) DAS4/5 System Handbook

Methods Applied and Interpretation of Parameters:

- **Measurement Conditions:** Further details are available from the Validation Report at the end of the certificate. All figures stated in the certificate are valid at the frequency indicated.
- **Antenna Parameters with TSL:** The dipole is mounted with the spacer to position its feed point exactly below the center marking of the flat phantom section, with the arms oriented parallel to the body axis.
- **Feed Point Impedance and Return Loss:** These parameters are measured with the dipole positioned under the liquid filled phantom. The impedance stated is transformed from the measurement at the SMA connector to the feed point. The Return Loss ensures low reflected power. No uncertainty required.
- **Electrical Delay:** One-way delay between the SMA connector and the antenna feed point. No uncertainty required.
- **SAR measured:** SAR measured at the stated antenna input power.
- **SAR normalized:** SAR as measured, normalized to an input power of 1 W at the antenna connector.
- **SAR for nominal TSL parameters:** The measured TSL parameters are used to calculate the nominal SAR result.

The reported uncertainty of measurement is stated as the standard uncertainty of Measurement multiplied by the coverage factor $k=2$, which for a normal distribution Corresponds to a coverage probability of approximately 95%.



In Collaboration with
s p e a g
CALIBRATION LABORATORY



Add: No.52 HuaYuanBei Road, Haidian District, Beijing, 100191, China
Tel: +86-10-62304633-2117
E-mail: emf@caict.ac.cn http://www.caict.ac.cn

Measurement Conditions

DASY system configuration, as far as not given on page 1.

DASY Version	DASY52	V52.10.4
Extrapolation	Advanced Extrapolation	
Phantom	Triple Flat Phantom 5.1C	
Distance Dipole Center - TSL	15 mm	with Spacer
Zoom Scan Resolution	dx, dy, dz = 5 mm	
Frequency	835 MHz \pm 1 MHz	

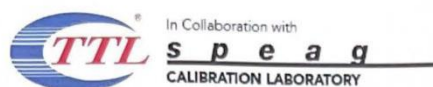
Head TSL parameters

The following parameters and calculations were applied.

	Temperature	Permittivity	Conductivity
Nominal Head TSL parameters	22.0 °C	41.5	0.90 mho/m
Measured Head TSL parameters	(22.0 \pm 0.2) °C	42.1 \pm 6 %	0.90 mho/m \pm 6 %
Head TSL temperature change during test	<1.0 °C	---	---

SAR result with Head TSL

SAR averaged over 1 cm ³ (1 g) of Head TSL	Condition	
SAR measured	250 mW input power	2.42 W/kg
SAR for nominal Head TSL parameters	normalized to 1W	9.68 W/kg \pm 18.8 % (k=2)
SAR averaged over 10 cm ³ (10 g) of Head TSL	Condition	
SAR measured	250 mW input power	1.56 W/kg
SAR for nominal Head TSL parameters	normalized to 1W	6.24 W/kg \pm 18.7 % (k=2)



Add: No.52 HuaYuanBei Road, Haidian District, Beijing, 100191, China
Tel: +86-10-62304633-2117
E-mail: emf@caict.ac.cn http://www.caict.ac.cn



Appendix (Additional assessments outside the scope of CNAS L0570)

Antenna Parameters with Head TSL

Impedance, transformed to feed point	49.8Ω- 2.74jΩ
Return Loss	- 31.2dB

General Antenna Parameters and Design

Electrical Delay (one direction)	1.299 ns
----------------------------------	----------

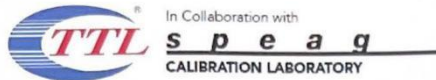
After long term use with 100W radiated power, only a slight warming of the dipole near the feed-point can be measured.

The dipole is made of standard semirigid coaxial cable. The center conductor of the feeding line is directly connected to the second arm of the dipole. The antenna is therefore short-circuited for DC-signals. On some of the dipoles, small end caps are added to the dipole arms in order to improve matching when loaded according to the position as explained in the "Measurement Conditions" paragraph. The SAR data are not affected by this change. The overall dipole length is still according to the Standard.

No excessive force must be applied to the dipole arms, because they might bend or the soldered connections near the feed-point may be damaged.

Additional EUT Data

Manufactured by	SPEAG
-----------------	-------



Add: No.52 HuaYuanBei Road, Haidian District, Beijing, 100191, China
Tel: +86-10-62304633-2117
E-mail: emf@caict.ac.cn http://www.caict.ac.cn

CAICT**DASY5 Validation Report for Head TSL**

Date: 2023-08-25

Test Laboratory: CTTL, Beijing, China

DUT: Dipole 835 MHz; Type: D835V2; Serial: D835V2 - SN: 484

Communication System: UID 0, CW; Frequency: 835 MHz

Medium parameters used: $f = 835$ MHz; $\sigma = 0.904$ S/m; $\epsilon_r = 42.11$; $\rho = 1000$ kg/m³

Phantom section: Right Section

Measurement Standard: DASY5 (IEEE/IEC/ANSI C63.19-2007)

DASY5 Configuration:

- Probe: EX3DV4 - SN3617; ConvF(10.1, 10.1, 10.1) @ 835 MHz; Calibrated: 2023-03-31
- Sensor-Surface: 1.4mm (Mechanical Surface Detection)
- Electronics: DAE4 Sn1556; Calibrated: 2023-01-11
- Phantom: MFP_V5.1C (20deg probe tilt); Type: QD 000 P51 Cx; Serial: 1062
- DASY52 52.10.4(1535); SEMCAD X 14.6.14(7501)

Dipole Calibration/Zoom Scan (7x7x7) (7x7x7)/Cube 0: Measurement grid: dx=5mm, dy=5mm, dz=5mm

Reference Value = 57.93 V/m; Power Drift = -0.01 dB

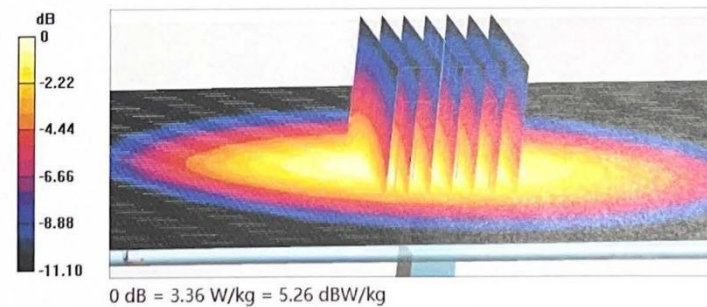
Peak SAR (extrapolated) = 3.92 W/kg

SAR(1 g) = 2.42 W/kg; SAR(10 g) = 1.56 W/kg

Smallest distance from peaks to all points 3 dB below = 16.3 mm

Ratio of SAR at M2 to SAR at M1 = 62.1%

Maximum value of SAR (measured) = 3.36 W/kg



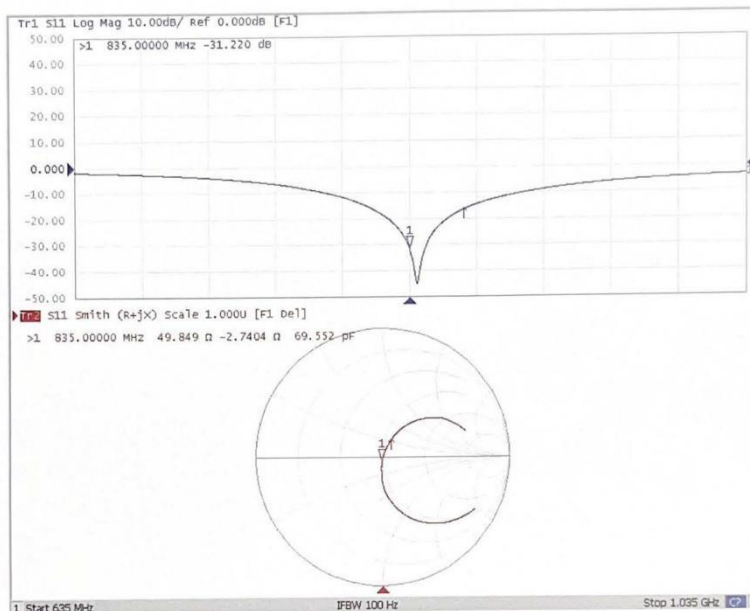


In Collaboration with
s p e a g
CALIBRATION LABORATORY



Add: No.52 HuaYuanBei Road, Haidian District, Beijing, 100191, China
Tel: +86-10-62304633-2117
E-mail: emf@caict.ac.cn <http://www.caict.ac.cn>

Impedance Measurement Plot for Head TSL





Add: No.52 HuaYuanBei Road, Haidian District, Beijing, 100191
Tel: +86-10-62304633-2117
E-mail: emf@caict.ac.cn http://www.caict.ac.cn



中国认可
国际互认
校准
CALIBRATION
CNAS L0570



Client CTA

Certificate No: J23Z60388

CALIBRATION CERTIFICATE

Object D1900V2 - SN: 5d002

Calibration Procedure(s) FF-Z11-003-01
Calibration Procedures for dipole validation kits

Calibration date: August 25, 2023

This calibration Certificate documents the traceability to national standards, which realize the physical units of measurements (SI). The measurements and the uncertainties with confidence probability are given on the following pages and are part of the certificate.

All calibrations have been conducted in the closed laboratory facility: environment temperature (22±3)°C and humidity<70%.

Calibration Equipment used (M&TE critical for calibration)

Primary Standards	ID #	Cal Date (Calibrated by, Certificate No.)	Scheduled Calibration
Power Meter NRP2	106277	22-Sep-22 (CTTL, No.J22X09561)	Sep-23
Power sensor NRP8S	104291	22-Sep-22 (CTTL, No.J22X09561)	Sep-23
Reference Probe EX3DV4	SN 3617	31-Mar-23(CTTL-SPEAG,No.Z23-60161)	Mar-24
DAE4	SN 1556	11-Jan-23(CTTL-SPEAG,No.Z23-60034)	Jan-24
Secondary Standards	ID #	Cal Date (Calibrated by, Certificate No.)	Scheduled Calibration
Signal Generator E4438C	MY49071430	05-Jan-23 (CTTL, No. J23X00107)	Jan-24
NetworkAnalyzer E5071C	MY46110673	10-Jan-23 (CTTL, No. J23X00104)	Jan-24

	Name	Function	Signature
Calibrated by:	Zhao Jing	SAR Test Engineer	
Reviewed by:	Lin Hao	SAR Test Engineer	
Approved by:	Qi Dianyuan	SAR Project Leader	

Issued: September 1, 2023

This calibration certificate shall not be reproduced except in full without written approval of the laboratory.

Certificate No: J23Z60388

Page 1 of 6



In Collaboration with
s p e a g
CALIBRATION LABORATORY



Add: No.52 HuaYuanBei Road, Haidian District, Beijing, 100191, China
Tel: +86-10-62304633-2117
E-mail: cttl@chinattl.com <http://www.caict.ac.cn>

Glossary:

TSL	tissue simulating liquid
ConvF	sensitivity in TSL / NORM _{x,y,z}
N/A	not applicable or not measured

Calibration is Performed According to the Following Standards:

- a) IEC/IEEE 62209-1528, "Measurement Procedure for The Assessment of Specific Absorption Rate of Human Exposure to Radio Frequency Fields from Hand-held and Body-mounted Wireless Communication Devices- Part 1528: Human Models, Instrumentation and Procedures (Frequency range of 4 MHz to 10 GHz)", October 2020
- b) KDB 865664, "SAR Measurement Requirements for 100 MHz to 6 GHz"

Additional Documentation:

- c) DASY4/5 System Handbook

Methods Applied and Interpretation of Parameters:

- *Measurement Conditions:* Further details are available from the Validation Report at the end of the certificate. All figures stated in the certificate are valid at the frequency indicated.
- *Antenna Parameters with TSL:* The dipole is mounted with the spacer to position its feed point exactly below the center marking of the flat phantom section, with the arms oriented parallel to the body axis.
- *Feed Point Impedance and Return Loss:* These parameters are measured with the dipole positioned under the liquid filled phantom. The impedance stated is transformed from the measurement at the SMA connector to the feed point. The Return Loss ensures low reflected power. No uncertainty required.
- *Electrical Delay:* One-way delay between the SMA connector and the antenna feed point. No uncertainty required.
- *SAR measured:* SAR measured at the stated antenna input power.
- *SAR normalized:* SAR as measured, normalized to an input power of 1 W at the antenna connector.
- *SAR for nominal TSL parameters:* The measured TSL parameters are used to calculate the nominal SAR result.

The reported uncertainty of measurement is stated as the standard uncertainty of Measurement multiplied by the coverage factor $k=2$, which for a normal distribution Corresponds to a coverage probability of approximately 95%.



In Collaboration with
s p e a g
CALIBRATION LABORATORY



Add: No.52 HuaYuanBei Road, Haidian District, Beijing, 100191, China
Tel: +86-10-62304633-2117
E-mail: cttl@chinattl.com <http://www.caict.ac.cn>

Measurement Conditions

DASY system configuration, as far as not given on page 1.

DASY Version	DASY52	52.10.4
Extrapolation	Advanced Extrapolation	
Phantom	Triple Flat Phantom 5.1C	
Distance Dipole Center - TSL	10 mm	with Spacer
Zoom Scan Resolution	dx, dy, dz = 5 mm	
Frequency	1900 MHz \pm 1 MHz	

Head TSL parameters

The following parameters and calculations were applied.

	Temperature	Permittivity	Conductivity
Nominal Head TSL parameters	22.0 °C	40.0	1.40 mho/m
Measured Head TSL parameters	(22.0 \pm 0.2) °C	39.0 \pm 6 %	1.38 mho/m \pm 6 %
Head TSL temperature change during test	<1.0 °C	—	—

SAR result with Head TSL

SAR averaged over 1 cm^3 (1 g) of Head TSL	Condition	
SAR measured	250 mW input power	10.0 W/kg
SAR for nominal Head TSL parameters	normalized to 1W	40.1 W/kg \pm 18.8 % (k=2)
SAR averaged over 10 cm^3 (10 g) of Head TSL	Condition	
SAR measured	250 mW input power	5.19 W/kg
SAR for nominal Head TSL parameters	normalized to 1W	20.8 W/kg \pm 18.7 % (k=2)



In Collaboration with
s p e a g
CALIBRATION LABORATORY



Add: No.52 HuaYuanBei Road, Haidian District, Beijing, 100191, China
Tel: +86-10-62304633-2117
E-mail: cttl@chinattl.com <http://www.caict.ac.cn>

Appendix (Additional assessments outside the scope of CNAS L0570)

Antenna Parameters with Head TSL

Impedance, transformed to feed point	50.6Ω+ 1.54jΩ
Return Loss	- 35.7dB

General Antenna Parameters and Design

Electrical Delay (one direction)	1.084 ns
----------------------------------	----------

After long term use with 100W radiated power, only a slight warming of the dipole near the feed-point can be measured.

The dipole is made of standard semirigid coaxial cable. The center conductor of the feeding line is directly connected to the second arm of the dipole. The antenna is therefore short-circuited for DC-signals. On some of the dipoles, small end caps are added to the dipole arms in order to improve matching when loaded according to the position as explained in the "Measurement Conditions" paragraph. The SAR data are not affected by this change. The overall dipole length is still according to the Standard. No excessive force must be applied to the dipole arms, because they might bend or the soldered connections near the feed-point may be damaged.

Additional EUT Data

Manufactured by	SPEAG
-----------------	-------



In Collaboration with
s p e a g
CALIBRATION LABORATORY

CAICT

Add: No.52 HuaYuanBei Road, Haidian District, Beijing, 100191, China
Tel: +86-10-62304633-2117
E-mail: cttl@chinattl.com <http://www.caict.ac.cn>

DASY5 Validation Report for Head TSL

Date: 2023-08-25

Test Laboratory: CTTL, Beijing, China

DUT: Dipole 1900 MHz; Type: D1900V2; Serial: D1900V2 - SN: 5d002

Communication System: UID 0, CW; Frequency: 1900 MHz

Medium parameters used: $f = 1900$ MHz; $\sigma = 1.378$ S/m; $\epsilon_r = 38.95$; $\rho = 1000$ kg/m³

Phantom section: Right Section

Measurement Standard: DASY5 (IEEE/IEC/ANSI C63.19-2007)

DASY5 Configuration:

- Probe: EX3DV4 - SN3617; ConvF(8.14, 8.14, 8.14) @ 1900 MHz; Calibrated: 2023-03-31
- Sensor-Surface: 1.4mm (Mechanical Surface Detection)
- Electronics: DAE4 Sn1556; Calibrated: 2023-01-11
- Phantom: MFP_V5.1C (20deg probe tilt); Type: QD 000 P51 Cx; Serial: 1062
- DASY52 52.10.4(1535); SEMCAD X 14.6.14(7501)

Dipole Calibration/Zoom Scan (7x7x7) (7x7x7)/Cube 0: Measurement grid: dx=5mm, dy=5mm, dz=5mm

Reference Value = 94.11 V/m; Power Drift = 0.06 dB

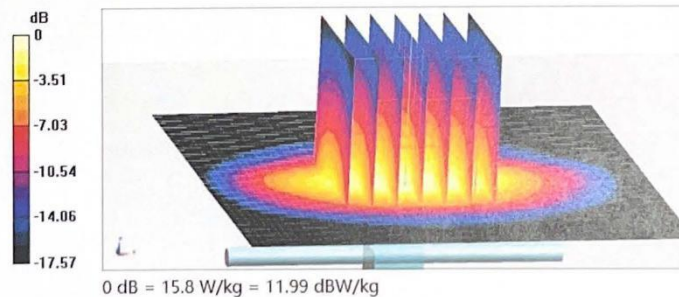
Peak SAR (extrapolated) = 19.1 W/kg

SAR(1 g) = 10 W/kg; SAR(10 g) = 5.19 W/kg

Smallest distance from peaks to all points 3 dB below = 9 mm

Ratio of SAR at M2 to SAR at M1 = 53.4%

Maximum value of SAR (measured) = 15.8 W/kg



Certificate No: J23Z60388

Page 5 of 6



In Collaboration with
s p e a g
CALIBRATION LABORATORY



Add: No.52 HuaYuanBei Road, Haidian District, Beijing, 100191, China
Tel: +86-10-62304633-2117
E-mail: cttl@chinattl.com <http://www.caict.ac.cn>

Impedance Measurement Plot for Head TSL

