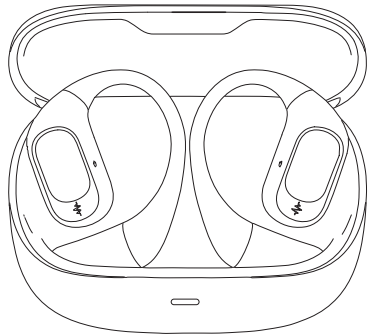


尺寸:70\*80mm 正反印刷

## 使用指南



### 1 连接方法

- 取出耳机，靠近已解锁的手机
- 等待8秒左右打开蓝牙
- 搜索蓝牙名称点击连接
- 自动回连：在手机没有删除连接过耳机配对名，取出耳机可自动回连

### 2 主要参数

蓝牙版本	V5.4	配对名	Y312
频率响应	20KHZ~20KHZ	耳机控制	触控控制
灵敏度	118dB ±3dB	产品重量	63.5g(±1g)
支持协议	a2dp\avctp\avctp\awcp\hfp\spp\smp\att\gap\gatt\rfc omm\sdpl\2cap profile		
充电盒充电	Type-C充电线	包装清单	无线耳机套装：充电线、说明书

### 3 左耳点触方式



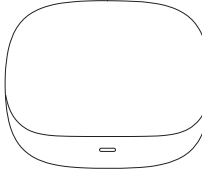
- 暂停/播放（触摸两次）
- 加音量（触摸一次）
- 上一曲（触摸三次）
- 拒接电话（长按2秒）
- 语音助手（触摸四次）

### 4 右耳点触方式

- 暂停/播放（触摸两次）
- 减音量（触摸一次）
- 下一曲（触摸三次）
- 拒接电话（长按2秒）
- 游戏模式（触摸四次）

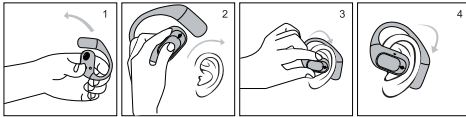


### 5 充电指示灯状态



- 给耳机充电时（冰蓝灯闪烁）
- 耳机充满电后（灯不亮）
- 充电仓低电量（橙灯快闪三下）
- 给充电仓充电（橙灯闪烁）
- 充点仓满电时（冰蓝灯常亮）

### 6 佩戴方式



拿出耳机 放置挂耳处 顺着耳廓向后旋转 耳机至合适位置 佩戴完成

### 7 使用注意事项

- 日常使用中耳机充电面会沾上灰尘等脏污的东西可以使用棉签清理耳机充电电接触面。
- 耳机需按要求正确规范的使用，注意使用环境对耳机的影响，为保证连接顺畅，建议手机和耳机之间的距离在8米范围内。
- 如耳机有连接不上或通讯不畅等其它问题，请忽私自拆卸耳机本体及其配件，否则不予保修不要使用超过额定安数伏数的充电头给耳机充电。
- 为了保证你正常使用耳机，请确保耳机的电量充足。

### 8 温馨提示

- 如果你的耳机充电中存在发烫严重或烧坏的情况可以看是不是使用大于5V2A功率的充电头，大于的话需要更换小于5V2A的充电头。

- 当左右耳机出现只有一边有声音的时候请把两只耳机重新放入充电盒，耳机自动关机，打开手机找到配对名，点击取消蓝牙配对，打开充电盒，取出耳机，靠近解锁的手机等待8秒左右打开手机蓝牙搜索蓝牙配对名点击连接。

### 3. 耳机听不到声音

- (1)确认耳机处于工作状态
- (2)确认耳机的音量大小是否合适
- (3)确认耳机是否与手机正常连接
- (4)确认耳机在正常的工作范围

- 如果听到耳机有断续的情况：有些地方信号干扰大，蓝牙耳机会出现干扰蓝牙底噪的情况会出现断续情况走到别的地方断开重新连接即可解决。

- (1)耳机离手机距离超出8米以上或中间有障碍物时，会影响信号传输
- (2)周边有大功率发射设备时，会影响信号传输
- (3)紧密空间也会影响信号传输(电子城等)

### 保修卡/合格证

请您妥善保管好保修证和购机凭证，这些将是您的保修凭证。  
产品保修单(非人为损坏保修一年)

用户姓名		联系电话	
产品编号		购机日期	
通讯地址			
故障描述			

检修记录

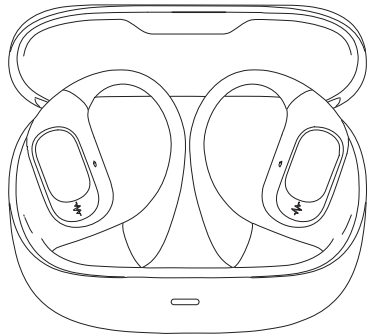
序号	日期	检修记录	修理人员
1			
2			
3			

### 合格证

生产日期：\_\_\_\_\_  
检验员：\_\_\_\_\_

## USER GUIDE

Open-Ear Noise-Canceling Wireless Headphones  
K11 Pro



### 1 Connection method

- Take out the earphones from the charging case and get close to the unlocked mobile phone
- Wait eight seconds and at the time please turn on Bluetooth device on mobile phone
- Search for Bluetooth name "Y312"and click connect
- Auto-connect: If the pairing name of the connected headset has not been deleted on the phone, take out the headset then can automatically connect back

### 2 Specification

BT version	V5.4	Pairing name	Y312
Frequency response	20KHZ~20KHZ	Operation	Touch control
Sensitivity	118dB±3	Product weight	63.5g (±1g)
Support profile	a2dp\avctp\avctp\awcp\hfp\spp\smp\att\gap\gatt\rfc omm\sdpl\2cap profile		
Product size	77.4*63.8*25.2mm		
Charging method of charging case	Type-C	Packaging list	Wireless earbuds&case, charging cable, manual, ear tips*6

### 3 Left earbuds function - operation method



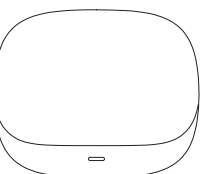
- Pause/Play (Touch twice)
- Increase volume (Touch once)
- Previous song (Touch three times)
- Reject call (Press and hold for 2 seconds)
- Voice assistant (Touch four times)

### 4 Right earbuds function - operation method



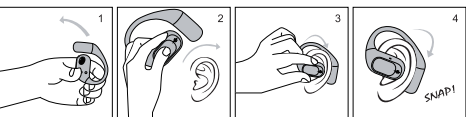
- Pause/Play (Touch twice)
- Reduce volume (Touch once)
- Next song (Touch three times)
- Reject call (Press and hold for 2 seconds)
- Game mode (Touch four times)

### 5 Charging indicator status



- When charging headphones (ice blue light flashing)
- After the earphones are fully charged (the light does not turn on)
- Low battery in charging compartment (orange light flashes three times)
- Charge the charging compartment (orange light flashing)
- When the charging compartment is fully charged (ice blue light is constantly on)

### 6 Wearing method



Pick up Rotate along ear curve Check fit You are all set

### 7 Precautions for use

In daily use, the charging surface of the earphones will be stained with dust and other dirty things. You can use a cotton swab to clean the charging electrical contact surface of the earphones.

Earphones must be used correctly and in compliance with the requirements, and pay attention to the impact of the use environment on the earphones. To ensure a smooth connection, it is recommended that the distance between the mobile phone and the earphones be within 8 meters.

If the headset fails to connect or has poor communication or other other problems, please disassemble the headset body and its accessories without permission, otherwise the warranty will be void. Do not use a charging head that exceeds the rated ampere and volts to charge the headset.

In order to ensure that you can use the headset normally, please make sure that the headsets were fully charged.

### 8 Warm prompt

- If your headphones become seriously hot or burned out during charging, check to see if you are using a charging head with a power greater than 5V2A. If so, you need to replace it with a charging head that is less than 5V2A.

- When there is sound from only one side of the left and right earphones, please put the two earphones back into the charging box. The earphones will automatically shut down. Open the phone to find the pairing name, click to cancel Bluetooth pairing, open the charging box, take out the earphones, and approach your unlocked phone. Wait about 8 seconds, turn on the Bluetooth on your phone, search for the Bluetooth pairing name, and click to connect.

### 3. Can't hear sound from headphones

- 3.1. Confirm that the headset is in working condition
- 3.2. Confirm whether the volume of the headphones is appropriate
- 3.3. Confirm whether the headset is properly connected to the mobile phone
- 3.4. Confirm that the headset is within the normal working range

- If you hear intermittent sound in the headset: In some places, the signal interference is large, and the Bluetooth headset will interfere with the Bluetooth noise floor. If there is an intermittent situation, go to another place to disconnect and reconnect.

- 4.1. When the distance between the headset and the mobile phone is more than 8 meters or there are obstacles in the middle, the signal transmission will be affected.
- 4.2. When there are high-power transmitting equipment nearby, it will affect signal transmission.
- 4.3. Close space will also affect signal transmission (electronic city, etc.)

### Warranty card/certificate of conformity

Please keep the warranty certificate and purchase voucher properly, these will be your warranty vouchers. Product warranty (one year warranty for non-man-made damage)

User's name		Contact number	
Product number		Date of purchase	
Correspond ence address			
Description of the fault			

Maintenance records

serial number	date	Maintenance records	Repair personnel
1			
2			
3			

### Certificate

Date of manufacture:\_\_\_\_\_  
Inspector:\_\_\_\_\_

尺寸:70\*80mm 正反印刷

<p>Any Changes or modifications not expressly approved by the party responsible for compliance could void the user's authority to operate the equipment.</p> <p>This device complies with part 15 of the FCC Rules. Operation is subject to the following two conditions: (1) This device may not cause harmful interference, and (2) this device must accept any interference received, including interference that may cause undesired operation.</p> <p>Note: This equipment has been tested and found to comply with the limits for a Class B digital device, pursuant to part 15 of the FCC Rules. These limits are designed to provide reasonable protection against harmful interference in a residential installation. This equipment generates, uses and can radiate radio frequency energy and, if not installed and used in accordance with the instructions, may cause harmful interference to radio communications. However, there is no guarantee that interference will not occur in a particular installation. If this equipment does cause harmful interference to radio or television reception, which can be determined by turning the equipment off and on, the user is encouraged to try to correct the interference by one or more of the following measures:</p> <ul style="list-style-type: none"><li>—Reorient or relocate the receiving antenna.</li><li>—Increase the separation between the equipment and receiver.</li><li>—Connect the equipment into an outlet on a circuit different from that to which the receiver is connected.</li><li>—Consult the dealer or an experienced radio/TV technician for help.</li></ul> <p>The device has been evaluated to meet general RF exposure requirement. The device can be used in portable exposure condition without restriction.</p>						
---	--	--	--	--	--	--