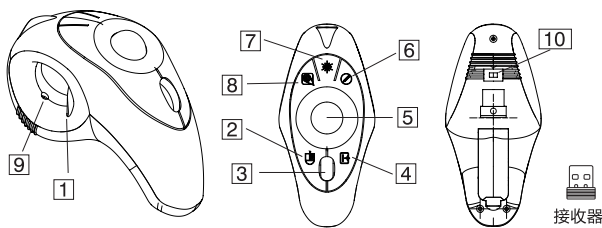



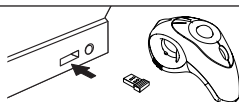
USER MANUAL



INTRODUCTION TO BUTTON NAMES AND FUNCTIONS

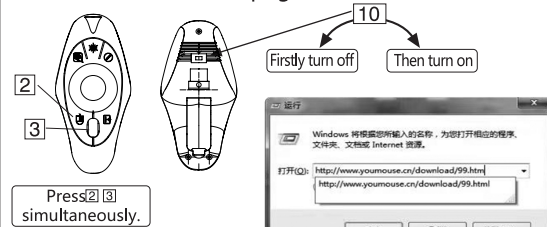
- ① **Left Button:** Used for general confirmation operations.
- ② **Right Button:** Accesses menus and other special functions.
- ③ **Scroll Wheel:** Scroll pages up or down by scrolling the wheel. Pressing the wheel as a page-turn button: pressing once changes the cursor, and simultaneously rolling the trackball can move the page up, down, left, or right.
- ④ **ESC:** Exits the current function.
- ⑤ **Trackball:** Rolls the ball to move the cursor.
- ⑥ **Red Dot & Pen Button:** Press to change the cursor into a red small square. Simultaneously pressing the ① (left button) button allows drawing red lines on the screen for annotation.
- ⑦ **Laser Button:** Press and hold on to emit a red laser beam.
- ⑧ **Magnifying Glass & Spot Light:** Press once to turn the cursor into a magnifying glass; press again to turn it into a spot light.
- ⑨ **DPI Adjustment Button:** Press once to adjust by one setting, with four settings available: 600/800/1000/1200 DPI. The default setting is 600 DPI. Green light: 800 DPI, Red light: 1000 DPI, Both green and red lights on: 1200 DPI. After becoming proficient, a higher DPI can be set.
- ⑩ **Power Switch:** Turns the device on or off.

GENERAL WIRELESS MOUSE USAGE STEPS

1. Turn on the power, enter the WINDOWS system, and connect to the internet. 
2. Insert the USB receiver. 
3. The system will automatically install the wireless mouse driver in approximately 5 to 20 seconds.
4. The mouse can now be used normally. Roll the trackball to move the cursor. Press button ② to bring up a menu, button ① for general operations, button ⑦ to emit a red laser beam, and turning the scroll wheel ③ to scroll up or down on web pages.

STEPS FOR USING MAGNIFYING GLASS, SPOT LIGHT, AND PEN FUNCTIONS

1. With the computer connected to the internet, turn off the mouse power, firstly press and hold buttons ② and ③ simultaneously, then turn on the power switch ⑩. Release buttons ② and ③ until the computer screen fully displays the software download page.



2. Run the Y-23H driver software, and the computer will automatically install the driver and display a small icon on the desktop.



3. Double-click the small icon. A status display will appear in a hidden small window at the bottom. All mouse functions are now available for use.

4. Press button ⑥ to change the cursor into a red small square. To draw a line, hold button ① and roll the trackball. To exit, press button ④.

5. Press button ⑧ once to turn the cursor into a large circle, which will magnify the content inside. Scrolling the wheel ③ will enlarge or reduce the size of the circle.

6. Press button ⑧ again to turn the circle into a bright spotlight, darkening the screen around it. Scrolling the wheel ③ will enlarge or reduce the size of the circle. To exit the function, press button ④.

7. If unable to exit or any bug occurrence, press Ctrl+Q on the computer keyboard to force quit.

FCC Warning:

This equipment has been tested and found to comply with the limits for a Class B digital device, pursuant to part 15 of the FCC Rules. These limits are designed to provide reasonable protection against harmful interference in a residential installation. This equipment generates, uses and can radiate radio frequency energy and, if not installed and used in accordance with the instructions, may cause harmful interference to radio communications. However, there is no guarantee that interference will not occur in a particular installation. If this equipment does cause harmful interference to radio or television reception, which can be determined by turning the equipment off and on, the user is encouraged to try to correct the interference by one or more of the following measures:

- Reorient or relocate the receiving antenna.
- Increase the separation between the equipment and receiver.
- Connect the equipment into an outlet on a circuit different from that to which the receiver is connected.
- Consult the dealer or an experienced radio/TV technician for help.

Caution: Any changes or modifications to this device not explicitly approved by manufacturer could void your authority to operate this equipment.

This device complies with part 15 of the FCC Rules. Operation is subject to the following two conditions:

(1) This device may not cause harmful interference, and (2) this device must accept any interference received, including interference that may cause undesired operation.

This equipment complies with FCC radiation exposure limits set forth for an uncontrolled environment. This equipment should be installed and operated with minimum distance 0cm between the radiator and your body.