

Sample acceptance  
certificate

Sample Approved Sheet

Cooperative Agreement (WIFI-003)

customer name Sanda Yinluo Technology  
Co., Ltd. customer model Z875, customer  
part number 1. 1.062.00000102/1.  
1.062.00000103 brand HT-WIFI-003 is  
produced by Hecuo

Hui tuo Judgment Review Group

|                      |                          |              |  |
|----------------------|--------------------------|--------------|--|
| work out             | examine and ve-<br>ri fy | ratify       | Acknowledgment of<br>the time of comple-<br>tion of the letter |
| Zhong Xi aom-<br>ing | Wu Shouping              | Dai Tingting | 2025.2.26  |

Sanda (customer) determines the audit team

Identify the book number\_\_ Provide the date of the acknowledgement letter

|  |                          |        |                         |
|--|--------------------------|--------|-------------------------|
| admit  | examine and ve-<br>ri fy | ratify | Date of acknowledgement |
|  |                          |        |                         |
| Review items: 3 letters of recognition specification/drawings test report<br>sample PCS safety regulations HSF |                          |        |                         |
| Evaluation result: Accept qualified acceptance refuse  |                          |        |                         |

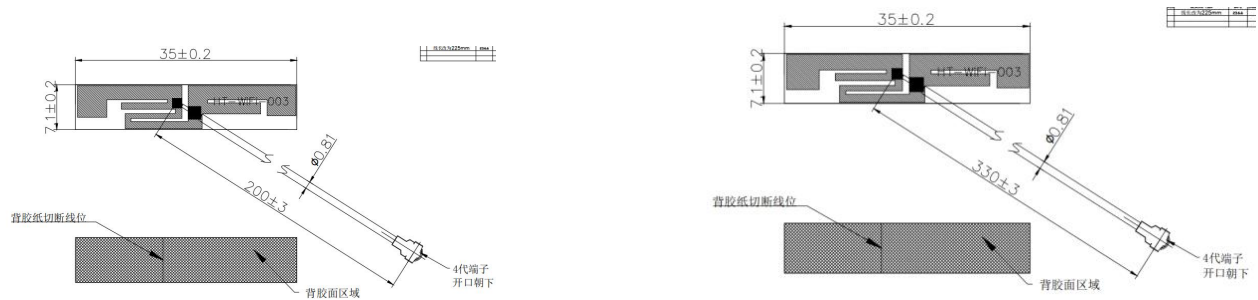
## Confidential Information

| Item | date        | order of the edition | revision note | remarks |
|------|-------------|----------------------|---------------|---------|
| 1    | 2025. 2. 26 | A0                   | initial issue |         |
| 2    |             |                      |               |         |
|      |             |                      |               |         |
|      |             |                      |               |         |
|      |             |                      |               |         |
|      |             |                      |               |         |
|      |             |                      |               |         |
|      |             |                      |               |         |
|      |             |                      |               |         |
|      |             |                      |               |         |
|      |             |                      |               |         |
|      |             |                      |               |         |
|      |             |                      |               |         |
|      |             |                      |               |         |
|      |             |                      |               |         |
|      |             |                      |               |         |
|      |             |                      |               |         |
|      |             |                      |               |         |
|      |             |                      |               |         |
|      |             |                      |               |         |

### 1. Antenna picture

The report mainly provides the test status of the electrical properties parameters of **HT-WIFI-003** .

The **HT-WIFI-003** antenna is a **WiFi** Band . The antenna Picture and assembly are shown below.



FPC Antenna picture &amp; assembly picture

## 2. Antenna Test Equipment Introduction

Test of antenna input characteristics using Agilent E5071C and Agilent 5062A vector network analyzer; The radiation pattern of the antenna are tested using the Satimo starlab 3D near field Anechoic Chamber , and the instrument is used to agilent8960 E5515 and Agilent E4438C. The test coordinates of the darkroom are as follows:

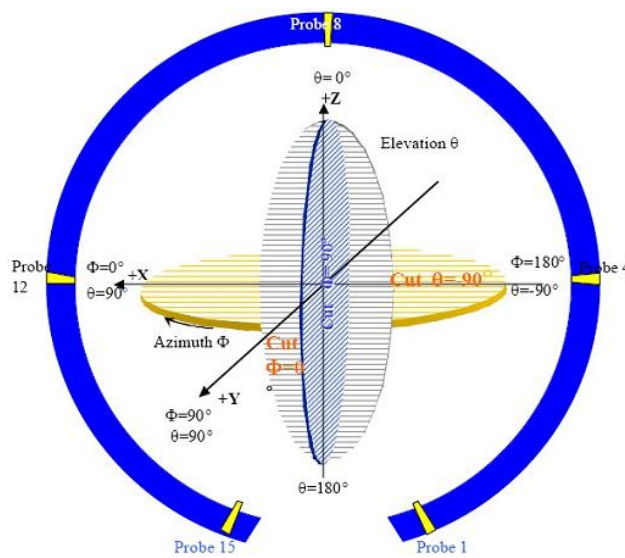


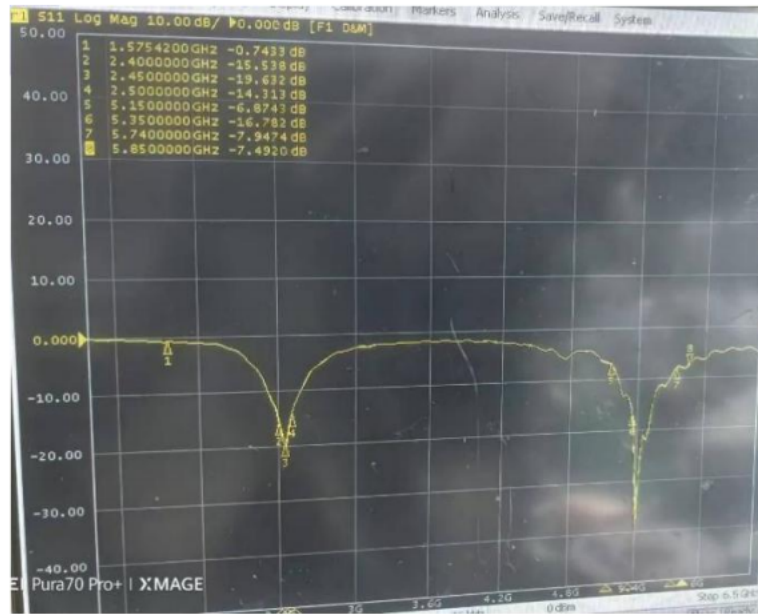
图 4 3D 微波暗室测试坐标系 (back view)

## 3. Electrical Specification

### 3-2 Passive S11 parameter

Measuring Method is a 50 Ω coaxial cable is connected to the antenna. Then this cable is connected to a network analyzer to measure the S11 parameter, Keeping this fixture away from metal at least 20cm.

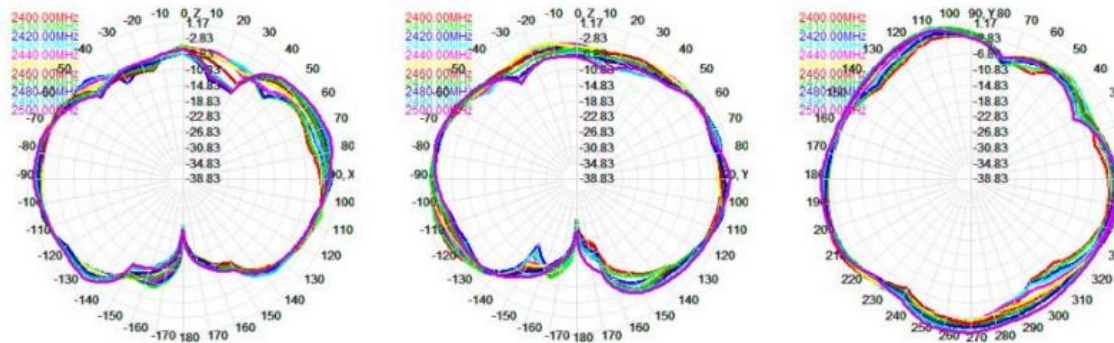
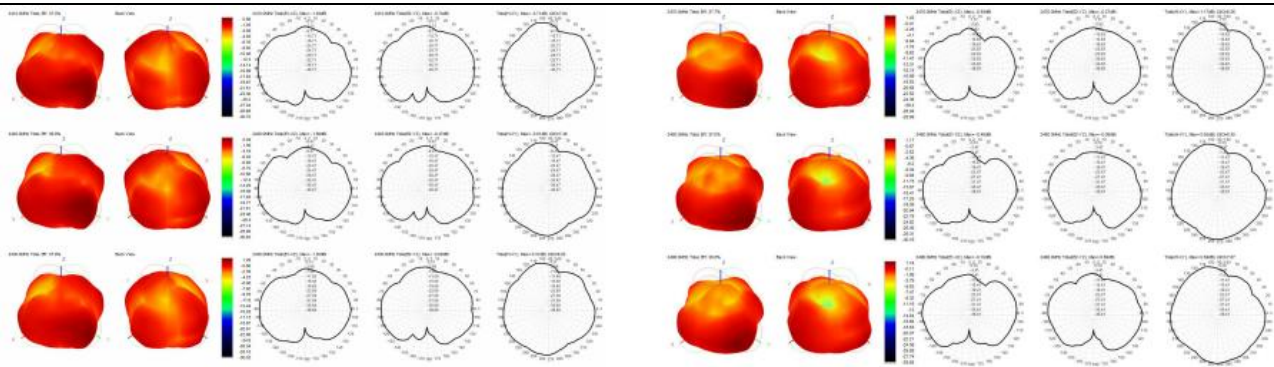
## VSWR



## 3-3 Antenna Matching Network

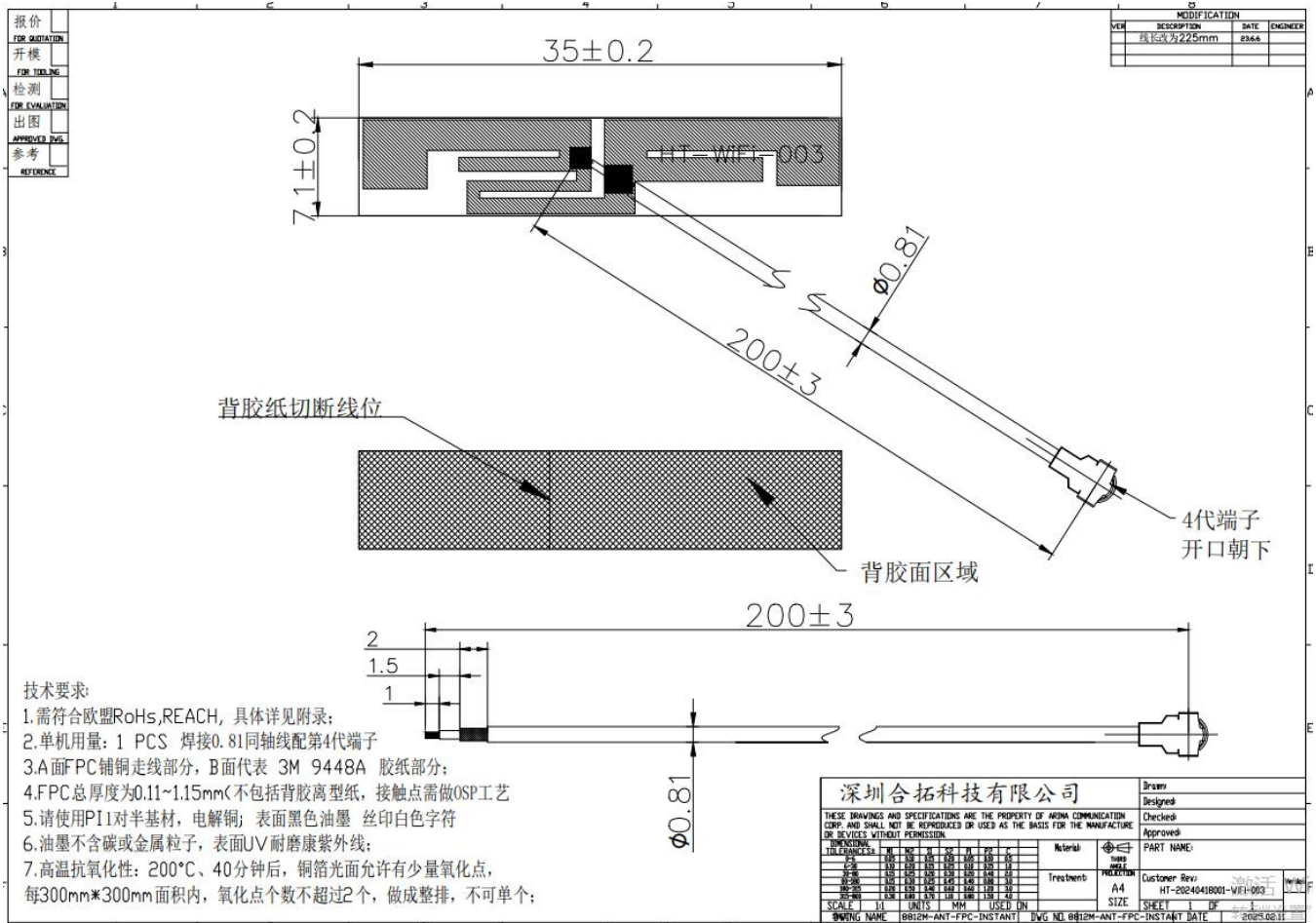
| Frequency (MHz) | Efficiency (%) | Gain (dBi) |
|-----------------|----------------|------------|
| 2400            | 27.2           | 1.3        |
| 2420            | 28.1           | 1.6        |
| 2440            | 29.2           | 1.4        |
| 2460            | 28.8           | 1.4        |
| 2480            | 28.9           | 1.6        |
| 2500            | 29.3           | 1.6        |
| 5180            | 30.1           | 1.5        |
| 5240            | 28.8           | 1.6        |
| 5745            | 28.5           | 1.6        |
| 5850            | 27.3           | 1.4        |
| 5900            | 27.7           | 1.3        |

# Confidential Information



| Test Equipment: | R&S CMW500            |         |          |          |
|-----------------|-----------------------|---------|----------|----------|
| Test Condition: | 3D chamber            |         |          |          |
| Band            | Wireless Proto<br>col | Channel | TRP(dBm) | TIS(dBm) |
| WIFI            | 802.11b<br>(11M)      | 1       | 9.3      | -77.6    |
|                 |                       | 6       | 10.7     | -78.9    |
|                 |                       | 11      | 10.5     | -77.1    |
| WIFI            | 802.11g<br>(54M)      | 1       | 8.3      | -68.8    |
|                 |                       | 6       | 8.8      | -69.2    |
|                 |                       | 11      | 8.6      | -69.7    |
| WIFI            | 802.11n<br>(CS7)      | 1       | 9.3      | -68.6    |
|                 |                       | 6       | 9.3      | -68.8    |
|                 |                       | 11      | 9.1      | -68.2    |
| WIFI            | 802.11a<br>(54M)      | 36      | 8.3      | -67.2    |
|                 |                       | 60      | 8.5      | -67.3    |
|                 |                       | 161     | 9.7      | -67.9    |

# Corresponding customer part number: 1.1.062.00000102





# Corresponding customer part number: 1.1.062.00000103

