

User Manual

Model:C1545

Ver1.0

Shenzhen Sedinitta Technology Co. , Ltd.

Contents

INTRODUCTION	错误!未定义书签。
SED SELF-SERVICE TERMINAL USAGE SPECIFICATION	4
1. INTRODUCTION OF THE WHOLE MACHINE	7
1. MODEL DESCRIPTION	7
2. FEATURES OF SELF-SERVICE TERMINALS	7
3. OPEN 7	
4. CONFIGURATION INSTRUCTIONS FOR SELF-SERVICE TERMINALS	8
5. PACKAGING	9
2. INSTALLATION INSTRUCTIONS	10
1. DIMENSION DRAWING	10
2. INTRODUCTION TO THE INSTALLATION AND FUNCTION TESTING OF THE WHOLE MACHINE	11
3. PRECAUTIONS FOR INSTALLATION AND MAINTENANCE	14
3. SELF-CHECK OF THE MACHINE	15
4. COMMON TROUBLESHOOTING METHODS	16
5. MAINTENANCE	17

Introduction

Thank you for choosing the products of Sedinitta Technology Co., Ltd. In order to enable you to use our products better, please read this manual carefully before installing and using the products, so as to have a preliminary understanding of the products and follow the necessary operating procedures.

This manual introduces the overall performance of the SED self-service terminal and lists the main parameters of the optional accessories. It explains the packing list and installation, and users can check the accessories and install the machine according to these instructions. It introduces the method of power-on inspection so that users can check whether the machine is damaged during transportation. It introduces some faults caused by improper use and their troubleshooting methods. It also gives a brief introduction to the hardware maintenance of the machine.

If you have any questions about this product, you can consult our company or agent and you will get a satisfactory answer.

Statement

The configuration of this batch of products is subject to the packing list. If this manual involves non-selected models and non-selected interfaces and components, the contents in the manual regarding the above models, components and interfaces will be invalid.

All information in this article is subject to data at the time of publication and is subject to change without prior notice. For further technical support and the latest information, please contact the nearest salesperson or customer service center.

Shenzhen Sedinitta Technology Co. ,
Ltd.

Warning

1. Static electricity may damage the host integrated circuit.
2. Improper battery replacement may result in explosion. Replace only with the same or equivalent battery recommended by the manufacturer.
3. Dispose of used batteries according to the instructions of the battery manufacturer.

Shenzhen Sedinitta Technology Co. ,
Ltd.

FCC Warning

This device complies with Part 15 of the FCC Rules. Operation is subject to the following two conditions: (1) This device may not cause harmful interference, and (2) this device must accept any interference received, including interference that may cause undesired operation.

NOTE 1: This equipment has been tested and found to comply with the limits for a Class B digital device, pursuant to part 15 of the FCC Rules. These limits are designed to provide reasonable protection against harmful interference in a residential installation. This equipment generates, uses and can radiate radio frequency energy and, if not installed and used in accordance with the instructions, may cause harmful interference to radio communications. However, there is no guarantee that interference will not occur in a particular installation. If this equipment does cause harmful interference to radio or television reception, which can be determined by turning the equipment off and on, the user is encouraged to try to correct the interference by one or more of the following measures:

- Reorient or relocate the receiving antenna.
- Increase the separation between the equipment and receiver.
- Connect the equipment into an outlet on a circuit different from that to which the receiver is connected.
- Consult the dealer or an experienced radio/TV technician for help.

NOTE 2: Any changes or modifications to this unit not expressly approved by the party responsible for compliance could void the user's authority to operate the equipment.


The device has been evaluated to meet general RF exposure requirement. The device can be used in portable exposure condition without restriction.

List of names and contents of toxic and harmful substances

Material Information	Hazardous substances					
Part Name	lead	mercury	cadmium	Hexavalent Chromium	Polybrominated biphenyls	Polybrominated diphenyl ethers
	(mg/kg)	(mg/kg)	(mg/kg)	(mg/kg)	(mg/kg)	(mg/kg)
Power adapter	×	○	○	○	○	○
Hard disk and data cable	×	○	○	○	○	○
Memory	○	○	○	○	○	○
fan	○	○	○	○	○	○
Main board and control board	×	○	○	○	○	○
Wire and Cable	○	○	○	○	○	○
Housing, hardware and screw	○	○	○	○	○	○
Plastic parts, labels, Floor mats	○	○	○	○	○	○

○ : Indicates that the content of the toxic and hazardous substance in all homogeneous materials of the component is below the limit requirements specified in GB/T 26572-2011 .

× : Indicates that the content of the toxic or hazardous substance in at least one homogeneous material of this component exceeds the limit requirement specified in GB/T 26572-2011 .

 80% of the components in this product are made of non-toxic and harmless environmentally friendly materials. Components containing toxic and harmful substances or elements cannot be replaced due to the limitations of global technological development levels.

This equipment is information technology equipment, and its radio disturbance characteristics comply with the requirements of Class A information technology equipment.

Warning

This is a Class A product. In a living environment, this product may cause radio interference. In this case, the user may be required to take practical measures to address the interference.

Usage specifications

1. During installation and use, you must use a three-hole power socket and UPS power supply that meets national standards and has CCC certification. The ground wire must be well grounded and the power supply voltage must be stable. Avoid sharing lines , power sockets and UPS power supplies with other equipment that is frequently started or has frequently changed current .
2. Do not spill liquid of any kind or drop objects of any kind.
3. Do not apply heavy pressure, severe vibration, shake or hard strike to the self-service checkout terminal .
4. Do not turn the power on and off frequently, as this may cause shock to the machine.
5. the self-service checkout terminal when it is powered on .
6. Self-service checkout terminals must use qualified printing paper and printing ribbons.
7. Do not extend the cable or replace its parts at will. If necessary, please contact our company or agent.
8. The machine should be operated in a dry, ventilated, clean environment away from sunlight. The ambient temperature should be kept between 5-35 °C and the relative humidity should be kept between 20%-80% .
9. The heat dissipation vents of the machine cannot be blocked and must have an upward and outward air outlet with an opening area of no less than 0.01 m² .
- 10.using a USB flash drive, please ensure that it is virus-free.
- 11.The machine should be managed and used by a dedicated person, and training should be conducted before use. Do not allow unfamiliar people to operate the machine.
- 12.The machine needs regular maintenance, including: functional testing, external cleaning of the whole machine, cleaning of the printer and keyboard, internal cleaning, printer lubrication, cable and plug inspection, hard disk inspection and cleaning, virus scanning and removal. For specific methods, see Part 5, Maintenance Schedule :

Maintenance items \ schedule	Before use	weekly	First month	First quarter	Every quarter thereafter

Structural and functional testing	●			●	●
Cleaning the exterior of the machine, printer and keyboard	●	●			
Cleaning the inside of the host and lubricating the printer				●	●
Cable and plug inspection	●		●		●
Hard disk inspection and cleaning	●		●		●
Virus scan and removal	●	●			

● Indicates the maintenance items that need to be performed on the current date.

13. The weekly cleaning of the entire machine, printer and keyboard can be performed by the user. The method is: when the power is off, use a soft dry cloth to wipe the surface of the machine, remove the printer ribbon and printing paper, use a vacuum cleaner with an opening width of less than 7mm to remove dust in the printer head, in the gaps between keyboard keys and at the air inlet of the host, and then install the printer ribbon and printing paper. Be careful not to use chemicals such as alcohol, gasoline, thinners, etc.

14. If liquid is accidentally spilled or debris is dropped into the computer, please shut down the computer immediately and cut off the power supply, remove the battery, dry the liquid and remove the debris. For corrosive liquids that have been spilled, rinse them with clean water and then dry them. If the battery is removed, reset the CMOS after restarting the computer .

15. When the machine breaks down and the problem cannot be solved by the established procedures, please notify our company or agent to send someone to check it. Do not open the case by yourself.

16. When safety faults such as odor , abnormal noise, leakage, etc. occur, the power supply should be cut off immediately and reported to the equipment management department in a timely manner for early processing.
17. When the self-service terminal is not in use, it should be turned off, the power supply should be cut off, and the protective cover should be put on.

1 Introduction

Self-service settlement terminal developed by our company in combination with current technology and business development trends. It is characterized by customers operating the machine themselves . As a supplement and replacement for the current traditional POS self-service settlement terminal , it is easy for customers to use, has low operating costs, low maintenance and flexible layout. In addition, the machine is also compatible with currently popular new technology applications such as QR code, identity verification, and remote monitoring.

1. Model Description

C154X

Note: The "X" after the model number represents different industry application requirements.

2. Characteristics

- ◆ Ergonomic design , reasonable layout and structural design.
- ◆ Good chassis cooling system design ensures operational reliability.
- ◆ Display screens of various sizes, touch-sensitive design.
- ◆ It undergoes 48 hours of high temperature aging screening and 2 full function tests before leaving the factory.
- ◆ Easy cable connection.
- ◆ Strict electromagnetic compatibility design.
- ◆ Flexible functional and structural design to meet the usage requirements of different business formats.

3. Open architecture

- ◆ Recommended operating systems: Pre-installed Windows 10 IoT (Non-activated

version) .

- ◆ Convenient upgrade and maintenance design.
- ◆ The host components are standard components: such as motherboard, hard disk, memory, interface and cables.
- ◆ Good hardware expandability to adapt to different business applications.

4. Configuration instructions

The main performance indicators of the self-service terminal configuration are as follows:

1) Hardware configuration (standard)

Central Processing Unit (CPU) Intel J6412

Memory capacity (DDR 4) 4 GB

Storage capacity 128 GB

Number of serial ports (COM) 1 (internal)

USB port 4

Network interface (Ethernet) 1

WiFi Optional

Bluetooth optional

2) Display

type LCD capacitive screen

size 15.6 inches

Resolution 1920 x 1080

color 16.7 million true colors

Backlight led

Interface EDP /LVDS

3) Scanning platform

Type Single window omnidirectional 1D/2D barcode reader

Sound support support

Decoding types 1D and 2D (supports all barcode types)

Recognition angle 360°

Interface USB (USB-HID)

4) Printing

Print Type Thermal Transfer

Print width 79.5+/-0.5mm

Printing speed up to 250mm/S

Interface RS-232C (COM0) / USB

Power supply 12 V/2A

5) Audio

Type Built-in speakers (stereo)

Power 5w

Interface 3.5mm

6) Camera

Type 3D HD camera

Interface USB

5. Packaging

The self-service terminal adopts an overall package, which includes a standard host and auxiliary accessories.

Standard configuration packing list

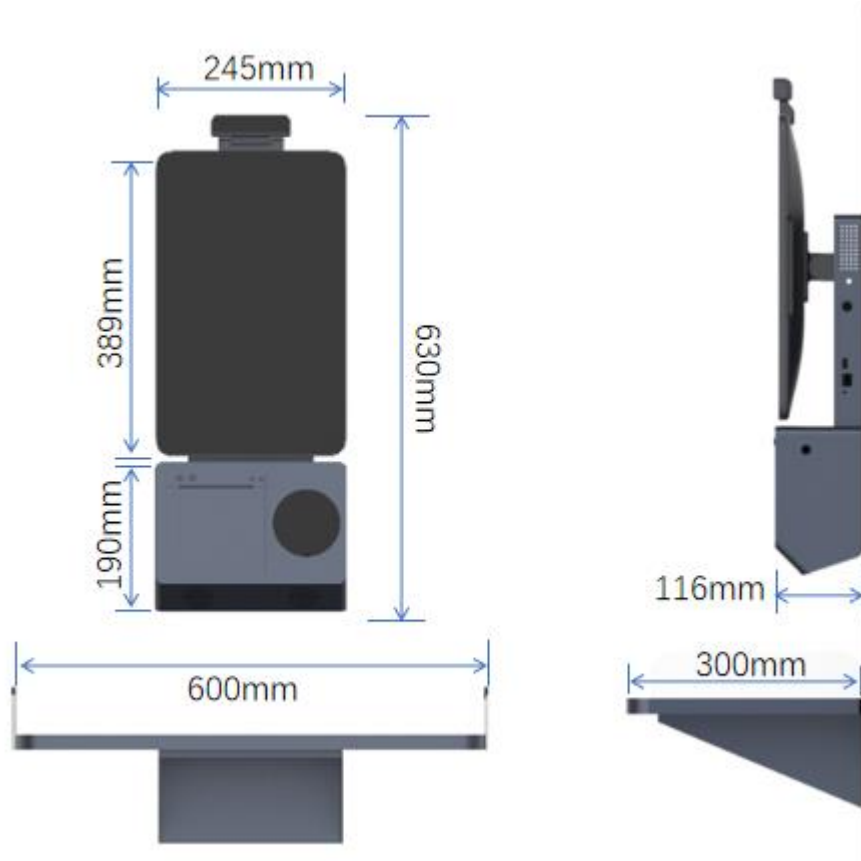
1. Self-service terminal (with touch screen) 1 unit
2. Power adapter 1
3. Product User Guide (including certificate, warranty card, packing list) 1 set

4. Thermal printing paper 1 roll

Note: For the actual list of items, please refer to the list in the sales contract.

2. Installation Instructions

1. Dimension



Dimensional drawing of wall-mounted version



Desktop version dimensions

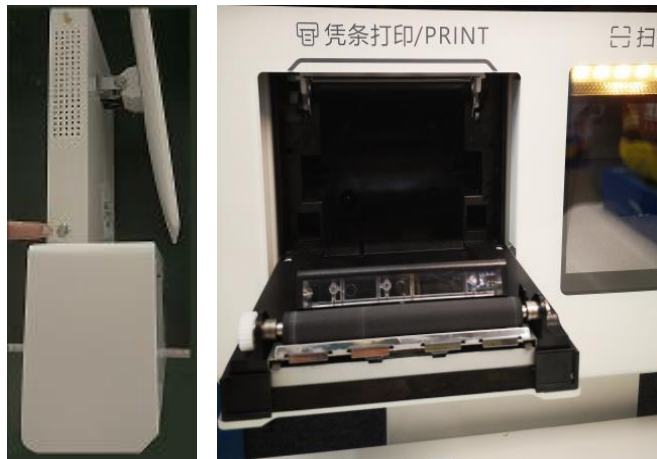
2. Introduction to the installation of complete machine components and functional testing



(* The above design and interface descriptions are for reference only . The product is subject to change without prior notice.)

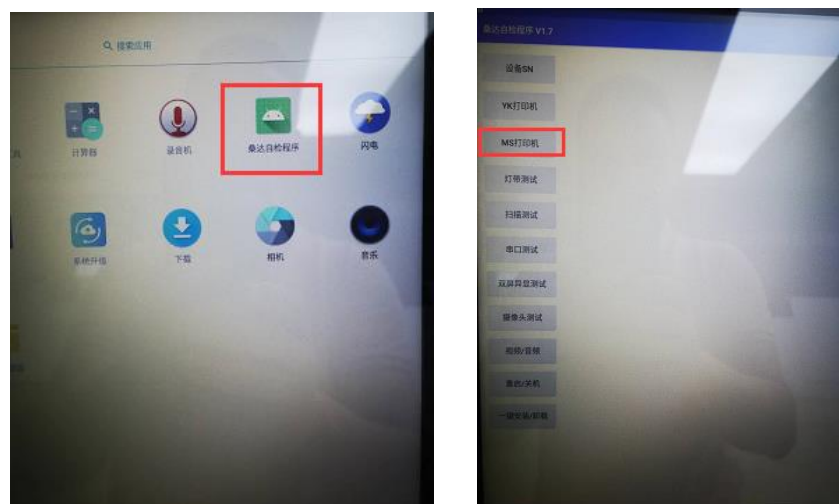
Printer test:

1. After installing the operating system, put the printing paper into the printer compartment. First, press and hold the printer switch button for 3 seconds (Figure 1), the printer's electric door will automatically pop open (Figure 2), put in the thermal printing paper, and manually close the printer door.



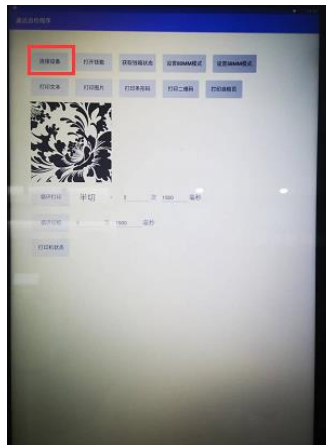
(Figure 1) (Figure 2)

2. Use the printer test tool . USB version: The printer is connected to the USB and operated using the driver or SDK . (" Sanda Self-Test Program" Figure 3) . Enter the self-test program and select "MS Printer" (Figure 4)

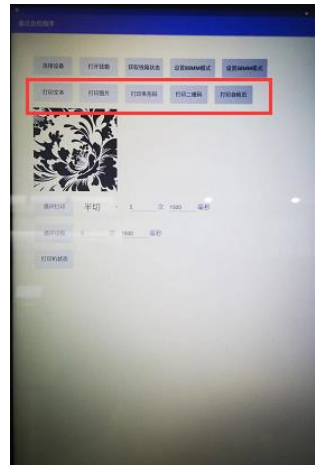


(Figure 3) (Figure 4)

3. Connect the printer (Figure 5)



4. You can test the printer's printing function (Figure 6).



Scanning platform test:

After installing the operating system, open the browser, click the address bar, and aim the one-dimensional code, two-dimensional code, and mobile payment code at the scanner to scan. After a successful scan, the scanner will make a prompt sound and the barcode information will be displayed on the screen. If the scanning is flexible and smooth and the beep is loud, the test is normal.



2. Precautions for installation and maintenance operations

- 1) Please handle the parts with care when picking them up and placing them down.
- 2) The order of installation is to connect the signal cables between components first, and then the power cables. The power cables can be connected last when all components are properly connected.
- 3) When the plug and socket are matched, make sure they are inserted into place. After checking that they are connected correctly, tighten the plug screws to ensure a firm connection.
- 4) After the installation is completed, the cables that are too long should be bundled and placed in the rear cover.
- 5) UPS power supplies with national standard sockets . The power plug should not easily get loose after being plugged in, and the ground wire should be reliably connected.
- 6) If the ground wire is not grounded, the casing will carry induced electricity and reduce the machine's anti-interference ability, which is not allowed.
- 7) The installation should be carried out without power supply, and plugging and unplugging with power supply is prohibited.
- 8) LCD screen, clean with a dry cloth.
- 9) Power-on sequence: first connect the AC power supply, then turn on the host power.

- 10) It is strictly forbidden to shut down the computer without exiting the system, as this may damage the system software or even the machine.
- 11) The print head should be cleaned by professionals or personnel who have received relevant training, otherwise the print head may be easily damaged.
- 12) Machine maintenance requires professional personnel from our company or personnel who have received training from our company to operate in order to avoid unnecessary dangers.

3. Self-check of the machine

All components of the self-service terminal have been strictly inspected before leaving the factory, and have been online inspected according to the user's configuration before shipment. If there are no accidents during transportation, after reaching the user, they should be correctly installed according to the installation instructions in the second part and should work normally after power on.

The power-on inspection process is as follows:

1. Make sure the machine is installed correctly as shown in the diagram.
2. After powering on, you can enter the user system.
3. Check whether the cooling fan is operating normally.
4. The main screen is displayed. If there is a secondary screen, you need to pay attention to whether the dual-screen display output is set.
5. Install the printer paper and use the printer test tool to test the printing function. (If available)
6. Use the card reader software to test the card reader functionality (if applicable)
7. Open the notebook and test the QR code reader (if any)
8. Use the ID card software to test the ID card module. (If available)
9. Open my camera and test the camera. (if any)
10. Open the sound recorder software and test the microphone. (If you have one)

(If the above function check is normal, it means that the whole machine functions

normally. At this time, the user can proceed to install his own application software. If the above function check is not normal, first check whether the wiring is correct. Since users usually buy machines in batches, there is no need to panic if the first machine fails the power-on test. You can put aside the first one and then test the second one. As long as one succeeds, other problems may be solved one by one after gaining experience. If the user still cannot make the machine pass the power-on test procedure, please contact our company in time to send personnel to deal with it on site. Under normal circumstances, users should not disassemble and dispose of faulty machines at will. If there is man-made damage, the customer shall be responsible for it.)

4. Common troubleshooting methods

Below, we list some common fault phenomena and their judgment and solutions for users' reference. The list does not include all fault phenomena, but users can learn the preliminary inspection and judgment methods from it, and then gradually move on from one to another.

Therefore barrier now epphant	Department reason square Law
1. No display on the monitor	Check the power connection; Check the signal line; Check whether the video output is set to dual display mode;
2. The host does not turn on	Check whether the power socket is in good contact; Check whether the power switch is turned on; If you still have questions, please contact our service personnel.
3. The printer does not	Check whether the power supply is connected and the printer power switch is turned on; whether the cable to the host is plugged in properly; and whether the printing paper is installed.

4. Network is not accessible or connected On and off	Check whether the network cable is well connected; Check the quality of the network cable and the quality of the wiring; In order to adapt to the poor 100M network environment, you can also set the network card working mode to half-duplex and 10M rate.

5. Maintenance

The self-service terminal is a computer-like electronic device. To ensure long-term stable operation of the self-service terminal, daily maintenance is essential. Please pay attention to the following aspects:

- 1. Use the self-service terminal strictly in accordance with our product usage requirements.
- 2. In order to extend the life of the self-service checkout terminal , the recommended working environment requirements are:

temperature 5 ~ 35 °C
Humidity 20 ~ 80 %RH

Maintenance method:

Serial number	project	How to operate
1	Functional testing	Follow the third part "Self-check of the machine"
2	External cleaning of the whole machine	When the power is off, use a soft dry cloth to wipe the exterior of the printer, remove the printer's ribbon and paper, use a vacuum cleaner with an opening width of less than 7mm to remove dust from the air inlet of the host, and then install the paper. Be careful not to use chemicals such as alcohol, gasoline, and thinners.
3	Printer and keyboard	Remove the printer's ribbon and printing paper, and use

	cleaning	a vacuum cleaner with an opening width of less than 7mm to remove dust from the printer head and the gaps between keyboard keys.
4	Cleaning the inside of the host	(Must be operated by professionals)
5	Printer and cash drawer lubrication	(Must be operated by professionals)
6	Cable and plug inspection	Check whether the connectors are rusted or damaged, whether they are plugged in place, whether the screws are tightened, and whether the cables are damaged or severely bent. If so, please replace them in time.
7	Hard disk inspection and cleaning	(Operated by professionals)
8	Virus scan and removal	Download the latest antivirus software virus database and scan system memory, startup objects, system restore, mail database, all hard disks, network drives, and removable media.

For the latest product information, drivers and test programs, please visit the Sunda Silver Network website or call the Sedinitta Service Hotline.

Shenzhen Sedinitta Technology Co. , Ltd.

4th Floor, Sangda Technology Building, No. 1 Keji Road, Technology Park, Nanshan District, Shenzhen, Guangdong, China

Tel: 0755-86316570 86316571

Fax: 0755-86316672

Website: [Http: //www.sed initta.com](http://www.sedinitta.com)

Service hotline: 0755-86316543

service hotline: 400- 678-8018