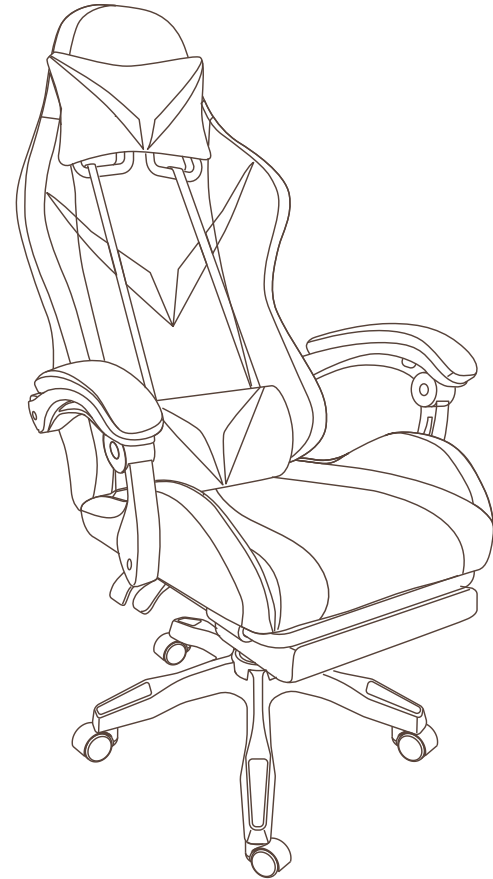


Esports Chair

User Manual



Product specification

Product Name: Esports Chair

Product Weight: 36lb

Weight Capacity: 450lb

Effective Distance: 32ft

Product Dimensions: 23.62x23.62x52.28in

The Name Of The Bluetooth : HuaBox

Working power Supply: 5V/2A

charging pad as the main power supply

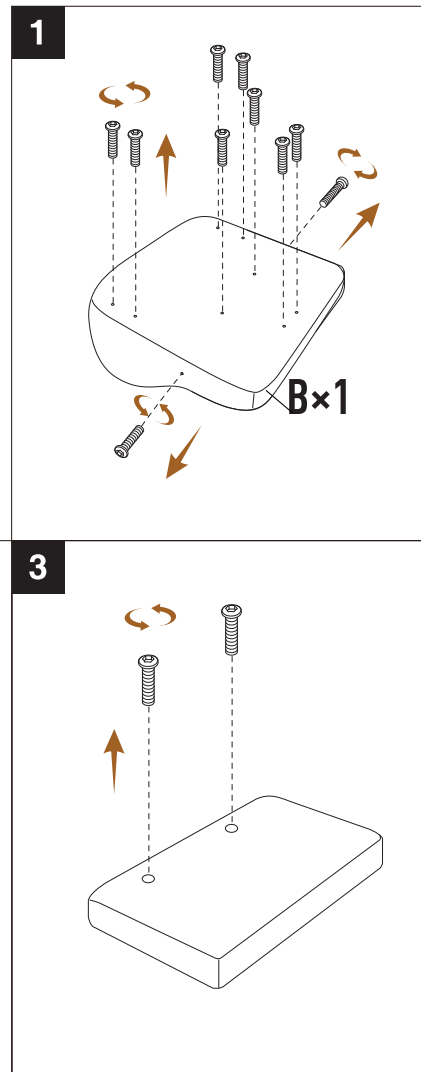
ATTENTION

Some screws are pre-installed on the chair and are NOT included in the hardware pack.



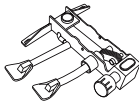
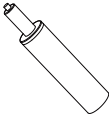
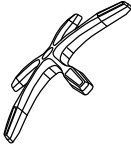
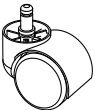
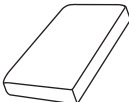
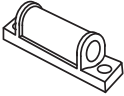
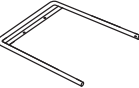



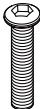




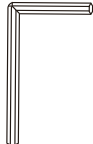

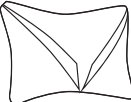


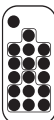

Please check the screw number according to the instruction manual and look for it on the chair!

The four screws marked as "J" in the screw pack are an additional set of special anti loosening screws that can prevent the armrest from loosening, but the screws are not easy to unscrew after installation.

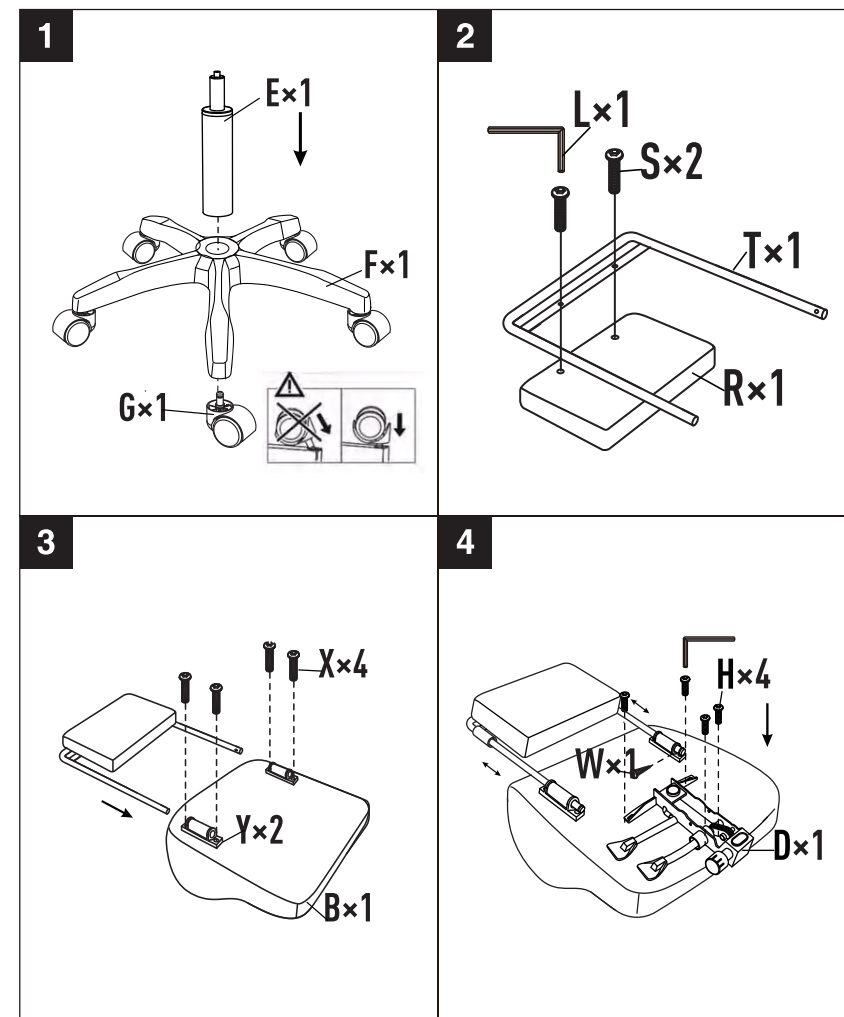
**Please remove
the pre-installed
screws before
installation**



PACKING LIST

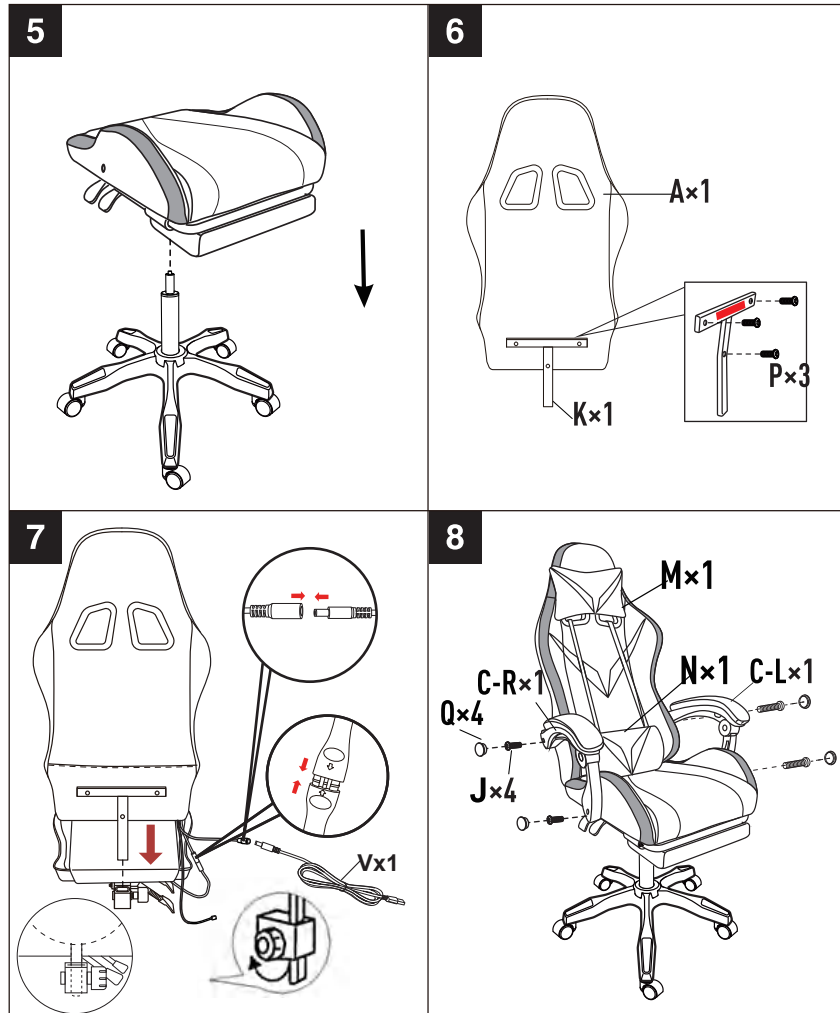
A*1 	B*1 	D*1 	E*1 	F*1 
G*5 	R*1 	Y*2 	T*1 	C-R*1 
C-L*1 	H*4  6*20mm	P*3  6*40mm	J*4  8*40mm	X*4  6*25mm
S*2  6*30mm	W*1  5x10mm	L*1 	K*1 	M*1 
N*1 	Q*4 	U*1 	V*1 	

INSTALLATION



Note: All screws have been preassembled to the accessories. Please remove them from the accessories before assembling.

INSTALLATION



Note: All screws have been preassembled to the accessories. Please remove them from the accessories before assembling.

FUNCTIONS OF EACH BUTTON

	ON&OFF	
	Speed adjustment	
	358 flker patterns to change	
	Brightness adjustment	
	LOCK Match: Press and hold "LOCK" for 5 seconds until green strip flash 3 times. Cancel the match: Press and hold "LOCK" for 5 seconds until white strip flash 3 times.	
	Auto mode Press to play automatically 358 modes. Press 5 times to enter color RGB mode Single cycle play Under AUTO mode, press "SETTING" once, then press "LOCK" once to cyclic the current pattern.	
	SETTING Adjust the LED quantity: Press and hold for 5 seconds until white strip flash to enter the setup menu. Press MODE +/- to adjust the quantity of the LED light. Press "SETTING" to finish the setting.	
	Static Monochrome Mode White, Red, Green, Purple, Yellow, Blue, Pink	
Long press the setting key to enter the setting mode MODE+/- adjust the lighting part (left/right side of backrest/entire seat cushion) SPEED+/- to adjust the number of lamp beads (cannot be adjusted when the light strips are fully on, only when part of the light strips are on, the number of lamp beads can be increased or decreased)		

USAGES

Testing	Continuously press "AUTO" 5 times to enter the RGB automatic switching mode, which can test the your LED.
Matching	Press "LOCK" for 5 seconds until LED flash in green quickly to match the remote control with the receiving controller. Press "LOCK" for 5 seconds until LED flash in white slowly to un-match.
Reorder RGB	Different kinds of LED, the RGB keys may not perfectly match to your LED, reorder them if needed. Continuously press "SETTING" 5 times until LED flash in white once and then turn into all white, press the "R" until LED is red, press "G" until LED is green, press "B" until LED is blue, finally press "SETTING" once to finish your setting.
Adjust the LED quantity	Press "SETTING" for 5 seconds until LED flash in white to enter the setup menu. Press "MODE +/-" or "SPPED +/-" to add/reduce the quantity of the LED pixels. Finally press "SETTING" once to finish the setting.

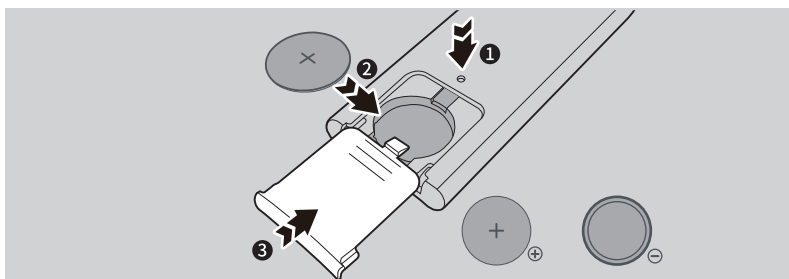
TROUBLESHOOTING

Fault conditions	Possible causes	Exclusion method
The product is shaking and unstable	<ol style="list-style-type: none"> 1. Wrong screw installation 2. The screw is broken 3. Check that the screws are not tightened in place 	<ol style="list-style-type: none"> 1. According to the instruction manual, install the correct screw in the correct position 2. To replace, use the included spare screws 3. Tighten the loose screws
The light strip is off	<ol style="list-style-type: none"> 1. Not plugged in 2. The lighting pattern is not saved correctly 	<ol style="list-style-type: none"> 1. Confirm that the product is powered on normally 2. Please read the instructions of the remote control carefully (page 6), and follow the operation
Audio doesn't work	<ol style="list-style-type: none"> 1. Bluetooth connection failed 2. Bluetooth connection error 	<ol style="list-style-type: none"> 1. Turn on your phone's bluetooth to connect 2. Turn off the phone's Bluetooth and reconnect (Bluetooth name: HuaBox)
Remote control not working	<ol style="list-style-type: none"> 1. The remote control gasket is not pulled out and cannot work 2. The battery is in poor contact or the battery is installed backwards 3. The battery is dead 	<ol style="list-style-type: none"> 1. Check whether the remote control gasket is pulled out 2. Check whether the battery is installed incorrectly and adjust 3. Replace the new battery to make the remote control work normally

Installing & Replacing Batteries



- ◆ Replace with new battery of the same type (CR2025, 3V) when necessary.
- ◆ When not using the remote control for extended period of time, take out the battery.



- 1 Press with an eject pin and then slide to remove the battery compartment cover.
- 2 Replace the battery with the same type, making sure the (+) side facing up.
- 3 Install the cover back in place.

WARNING

- **INGESTION HAZARD:** This product contains a button cell or coin battery.
- **DEATH** or serious injury can occur if ingested.
- A swallowed button cell or coin battery can cause **Internal Chemical Burns** in as little as **2 hours**.
- **KEEP** new and used batteries
- **Seek immediate medical attention** if a battery is suspected to be swallowed or inserted inside any part of the body.



Battery Safety

- Remove and immediately recycle or dispose of used batteries according to local regulations and keep away from children. DO NOT dispose of batteries in household trash or incinerate.
- Even used batteries may cause severe injury or death.
- Call a local poison control center for treatment information.
- Use or replace with new battery of the same type (CR2025, 3V).
- Non-rechargeable batteries are not to be recharged.
- DO NOT force discharge, recharge, disassemble, heat above 140°F/60°C or incinerate. Doing so may result in injury due to venting, leakage or explosion resulting in chemical burns.
- Ensure the batteries are installed correctly according to polarity (+ and -).
 - DO NOT mix old and new batteries, different brands or types of batteries, such as alkaline, carbon-zinc, or rechargeable batteries.
- Remove and immediately recycle or dispose of batteries from equipment not used for an extended period of time according to local regulations.
- Always completely secure the battery compartment. If the battery compartment does not close securely, stop using the product, remove the batteries, and keep them away from children.

FCC Statement

This device complies with Part 15 of the FCC rules. Operation is subject to the following two conditions: 1) this device may not cause harmful interference, and 2) this device must accept any interference received, including interference that may cause undesired operation.

Note: This equipment has been tested and found to comply with the limits for a Class B digital device, pursuant to part 15 of the FCC Rules. These limits are designed to provide reasonable protection against harmful interference in a residential installation.

This equipment generates uses and can radiate radio frequency energy and, if not installed and used in accordance with the instructions, may cause harmful interference to radio communications. However, there is no guarantee that interference will not occur in particular installation. If this equipment does cause harmful interference to radio or television reception, which can be determined by turning the equipment off and on, the user is encouraged to try to correct the interference by one or more of the following measures:

- Reorient or relocate the receiving antenna.
- Increase the separation between the equipment and receiver.
- Connect the equipment into an outlet on a circuit different from that to which the receiver is connected.
- Consult the dealer or an experienced radio/TV technician for help.

Changes or modifications not expressly approved by the party responsible for compliance could void the user's authority to operate the equipment.

FCC RF Radiation Exposure Statement

The device has been evaluated to meet general RF exposure requirement. The device can be used in portable exposure condition without restriction.