

Kussla



Dash Cam

- * 4K / WiFi / GPS/ 64G Card
- * Our factory strives on dashcam
- * We provide the best after-sales service



View



Replay



Download



Share



GPS



WiFi



A30G Dash Cam

64G card has been inserted in dash cam
Any using question please feel freely contact with us:
kussla_service@163.com

- Product Specification -

| | |
|-------------------|--|
| LCD Screen Size | 3" IPS Screen |
| Resolution | Front Cam - 4K Rear Cam - 1080P |
| WiFi | Built-in |
| Memory Card | 64G Card(inserted in dashcam) Max support 512G (better use U3 high-speed card ,brand like San Disk) |
| Battery | Built in 300mah |
| Photo | JPG |
| Current Frequency | 50HZ/60HZ |
| Product | A30G Dash Cam |
| GPS | Support |

- Package Contents -



Fant camera



Charger(you can use the USB cable or use the cigarette lighter charger cable)



USB Rader



Card Needle



64GB Memory Card



Car Wire Trim Tool



Lens Cleaning Cloth



8-10 Cable Hiding Clip



2 Set of rear cam install tool



User Manual



Static Sticker x2



rear camera & rear camera cable

- Dear Valued Customer -

Thank you for choosing the Kussla A30G dashcam. We appreciate your trust in our product. Should you have any questions or concerns, please do not hesitate to contact us.

We are dedicated to providing excellent after-sales service to all our customers. You can reach out to us at any time, and we aim to respond promptly.

Encountering Issues?

- 1.Problems with WiFi connection
- 2.Missing or faulty product parts
- 3.Product malfunction
- 4.Discrepancies between product and website description

Before considering a return, please get in touch with us. While we strive for perfection, we understand that no product can satisfy every customer 100%. However, we assure you of our 100% commitment to address your concerns.

How to contact us?

Method 1: Email us : kussla_service@163.com

Method 2: Visit our product page, enter our store, and click on the "Ask a question" button located in the upper right corner.

Please contact "Amazon Buyer Service" and request assistance in reaching our after- sales customer service. Because Amazon's customer service might not be equipped to answer product-specific questions, we are. We hope for your understanding in this regard.

- Table of Contents -

Mounting Structure Diagram————— 01

Important Notice Before Install————— 02

Camera Overview————— 03

How to Use the Button————— 05

Icon Instruction————— 07

Menu Setting————— 08

How to Playback the Video————— 15

How to Connect WiFi————— 18

Installation Guidance (details)————— 24

GPS Player————— 30

Questions & Answer————— 32

After-Sales Service————— 37

- Mounting Structure Diagram -



- Important Notice Before Install -

1. Any using question or not satisfied, please feel freely contact with our seller: kussla_service@163.com
2. **Before installation** : Insert the rear cam -- Charge front cam – Confirm both front and rear cam can works.
3. The 64G Card already inserted in dash cam, max support 512G
4. The mirror effect of the rear cam can be set. **Setting** - Found " **Rear Camera's Preview** " press M Button to enter. Better choose **Mirror** Setting. The rear cam default setting is the left and right inversion effect, which prevents accidents when reversing!
5. Need to always keep charging dash cam if using it.
6. If FREEZING or KEEP POWER ON & OFF issues, please use the card needle to insert the Re ttle hole (at the bottom of the dash cam).
7. When the dash cam connected to WiFi, can 't operate the dash cam, only can start/pause the recording on the mobile phone, or Playback/Delete the recorded files on the mobile phone.
8. Need to using the hardwire kit if you want to use the parking monitor or keep 24h recording.

- Camera Overview -

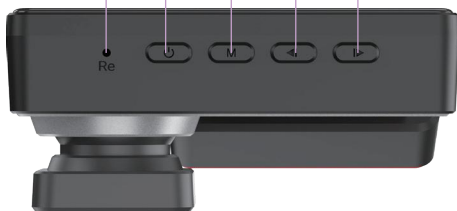
Power Button
(return button)

M Button
(confirm button)

Reset

Up Button

Down Button



Memory
Card Slot

Type-C Charger
Port

Rear Camera
Port



- How to Use the Button -

| | Power Button | M Button |
|--|--|--|
| at Recording Mode | Shot press : capture photo Long press: turn on/off the dash cam | Enter Setting Mode |
| at setting interface | Long press to turn on/off the dash cam Shot press = Return Button | Shot press = confirm Button |
| at Smart Driving Mode | Long press to turn on/off the dash cam Shot press = Return Button | Shot press = confirm Button |
| at ADAS setting of Smart Driving | Long press to turn on/off the dash cam Shot press = Return Button | Short press (long press) to switch coordinates |
| at BSD&LCA setting of Smart Driving | Long press to turn on/off the dash cam Shot press = Return Button | Short press (long press) to switch coordinates |
| at Menu Setting | Long press to turn on/off the dash cam Shot press = Return Button | Shot press = confirm Button |
| at Playback Mode | Long press to turn on/off the dash cam Shot press = Return Button | Shot press = confirm Button |

| | Up Button | Down Button |
|--|--|---|
| at Recording Mode | Short press to switch 3 display mode of screen Long press to turn on/off the WiFi quickly | Short press to one key lock the recording file Long press to one key turn on/off the radio |
| at setting interface | move left | move right |
| at Smart Driving Mode | move left | move right |
| at ADAS setting of Smart Driving | move left/ upward movement | move right/ move down |
| at BSD&LCA setting of Smart Driving | move left/ upward movement | move right/ move down |
| at Menu Setting | upward movement | move down |
| at Playback Mode | Short press: upward movement, Long press to unlocked the recording file | Short press: move down, Long press to delete the file or not |

Power Button = Return Button

M Button = OK Button = Confirm Button

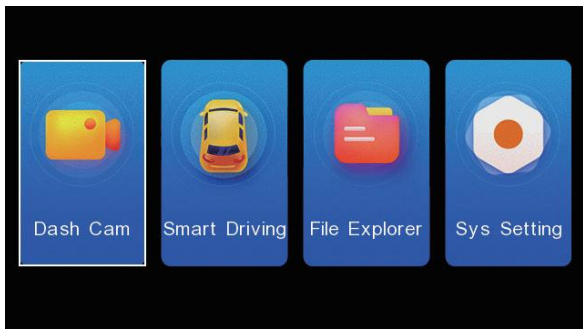
- Icon Instruction -

(when some function was turn off , the icon will not display on screen)



- Menu Setting Interface -

Press M Button to enter



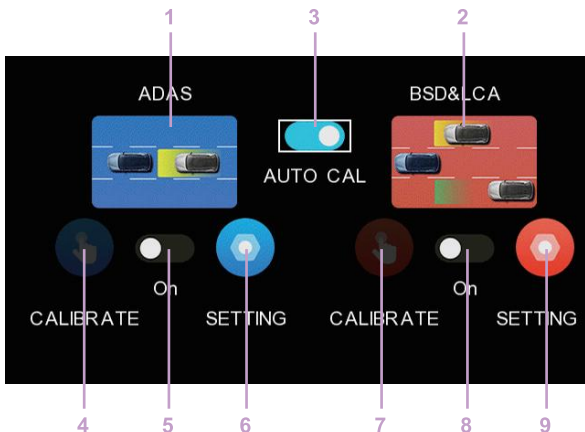
Dash Cam

Back to Recording interface

Smart Driving

Setting of Smart Driving, when ADAS is turned on, there will be a warning sound when there is an impending collision or deviation from the track.

When BSD is turned on, there will be a warning sound when a vehicle passes by the rear blind spot.



1. **ADAS:** Front blind spot
2. **BSD &LCA:** Back and side blind spot
3. **AUTO CAL** to turn on automatic calibration
4. **CALIBRATE** : Set the smart driving of front
Press CALIBRATE to enter :



Then press NEXT to enter:






Press Up/Down Button
to adjust the red line



Press Up/Down Button
to adjust the yellow line



Press Up/Down Button
to adjust the green line

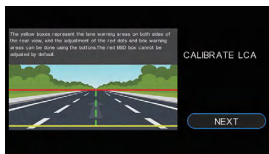
Press M Button to switch:  or  or 

5. **on**: turn on/off the smart driving of front

6. **SETTING**: detail smart driving setting of front (press M Button to enter , press M Button again to adjust)

7. **CALIBRATE**: Set the smart driving of back

Press CALIBRATE to enter :



Press CALIBRATE to enter :



Detection range setting: press M Button to choose the direction(there is red dot), press Up/Down Button to adjust it.

8. on: turn on/off the smart driving of back

9. SETTING: detail smart driving setting of front (press M Button to enter , press M Button again to adjust)

PS: when choose manual calibration, resolution will auto switch to 2k

File Explorer

This is the Playback Mode, Press M Button to enter and playback the recording file. (detail operation see page 15)



● Sys Setting- Menu Setting of Recording

Press M Button to enter system setting of dash cam:



| Menu | Choice | How to Set | Function |
|---|----------------------|---|--|
| Video Resolution | 4K/2K/1080P | press “M Button ” twice to enter and confirm choice | / |
| Loop Record | 1/2/3min | press “M Button” twice to enter and confirm choice | the recording duration |
| Collision Detection Sensitivity (G-Sensor) | Off/Low/ Middle/High | press “M Button” to enter and choose your choice | When collision, the sensitivity of dash cam: auto lock file. (better turn off or set Low when driving) |
| Sound Record | On/Off | press M Button to turn on/off | microphone/record your sounds or not |

| Menu | Choice | How to Set | Function |
|--------------------------------------|--|--|---|
| Night Vision without Light | On/Off | press M Button to set | After turn on , it can works better when it's dark at night |
| Volume Setting | 0/1/2/3 | press M Button to set | the volume of recording file audio |
| Sound on Keypress | On/Off | press M Button to set | the sound of button |
| Screen-saver | Off/1/3min | press M Button to set | the screen will shut down after 1/3min but still keep recording |
| Language | English/ Chinese/... | press "M Button" to enter and confirm choice | / |
| GPS Speed Accuracy Adjustment | -8 to 8 | press "M Button" to enter and confirm choice | / |
| Show Date /Time GPS Speed | On/Off | press "M Button" to enter and confirm choice | set the Date/Time of GPS or not |
| WiFi Information | WiFi Name and Password/ turn on/off the WiFi | press ok to turn on/off | / |

| Menu | Choice | How to Set | Function |
|--------------------------------|------------------|--|---|
| Satellite Information | / | / | green quantity reach up to 40+ will be successful positioning (see page 30) |
| Date & Time Setting | Y/M/D h/min/s | press Up/Down Button to correct, press M Button to confirm and enter next option setting | / |
| Format | Yes/No | Press M Button to confirm your choice | format all the file |
| Factory Reset | Yes/No | Press M Button to confirm your choice | reset the default setting |

- How to Playback the Video -

Way 1: Playback on Dash Cam

Playback Mode: Press M Button to enter and playback the recording file



At this interface

- ① press **Power Button** to return
- ② Press **twice M button** to playback
- ③ Press **Up button** to choose the file
- ④ Press **Down button** to choose the file



At this interface

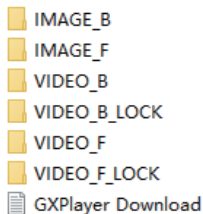
- ① Press **Power Button** to return
- ② Press **M button** to playback
- ③ Short press **Up button** to choose the file
Long press **Up Button** to lock/unlock the file
- ④ Short press **Down button** to choose the file
Long press **Down Button** to delete the file or not

Way 2: Using Memory Card to Playback on PC

- Insert the memory card into free USB Reader
- Connect the USB with your PC
- Open the memory card , choice like Pic 2

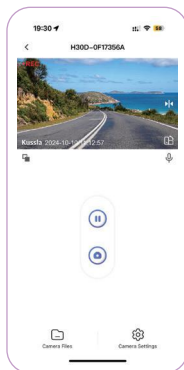


- * IMAGE_B is the photo of rear cam
- * IMAGE_F is the photo of front cam
- * VIDEO_B is the recording video file of rear cam
- * VIDEO_B_LOCK is the locked file of rear cam
- * VIDEO_F is the recording video file of front cam
- * VIDEO_F_LOCK is the locked file of front cam
- * GXplayer Download is the download address of GPS APP



Way 3 to Playback on Phone

Using your phone to playback video , detail please see Page 18



- How to Connect WiFi -

This feature allows users to connect their phones to the dashcam via a dedicated app and WiFi. Once connected, users can view the live feed from the dashcam on their phones. Please note:

The maximum distance between the dashcam and the phone for a stable connection is 3-5 meters.

The WiFi feature is intended for short-range viewing, and it's not possible to monitor the dashcam from remote locations, such as viewing from home while the dashcam is in a distant car.

Steps to Connect to WiFi for the First Time

1.Download “Viidure” APP:

- Enter “Sys Setting”
- Found “WiFi Information” settings and turn on dash cam WiFi.
- Locate the QR code for the app within the menu.
- Scan the QR code with your phone to download and install the dedicated dashcam app “Viidure”.

2.Initialize Connection:

- Enable your phone WiFi, connect to dash cam WiFi
- Turn on “Viidure” APP
- Click on “Connect Dashcam” within the app

3. Connection Tips

- Your phone will connect to Dash Cam WiFi not your home's WiFi after connect successfully
- If fail to connect, please reboot the phone and dash cam.

WiFi Connection Settings

Press **M Button** , Choose “ Sys Setting”- Press **M Button** - Choose “ WiFi Information” - Press **M Button** to enter it - Press **M Button** to turn on the WiFi - Scan the Code to Download the Free App “Viidure”



Scan the QR code with your mobile phone to download APP.

Turn on the mobile phone wifi, wait for the wifi name of the dash cam to appear on the screen, click connect and enter the wifi password.



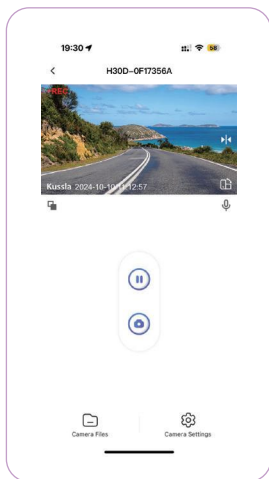
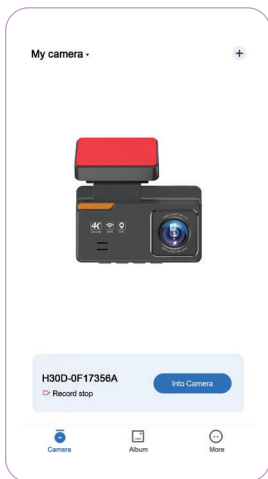
WiFi name and password for dash cam

Open your WLAN

Found the WiFi account like: H30D-0F***

WiFi password: 12345678

Open the App “viidure”



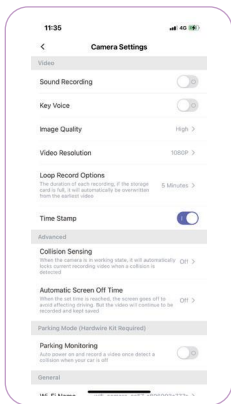
1. Through the mobile APP, you can watch the video recorded by the recorder in real time.

Click the The blue button "Access Camera" at the bottom right to start connecting the dash cam. After connecting, click to zoom in to switch between the front and rear lenses. (Ignore if there is no rear camera.)

2. View the videos and pictures saved in the Memory Card more clearly. Click on a video or photo to view the videos and pictures saved on the Memory Card.

Select the picture or video you want to save, click Download to save it to the APP album.

3. You can start recording and taking pictures through APP authorization.



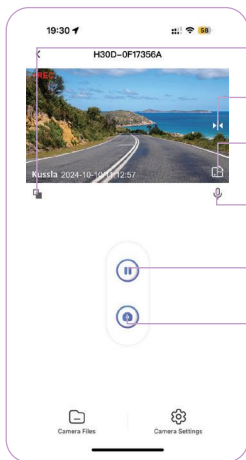
In APP settings

You can modify the Wi-Fi name and Wi-Fi password for this dashcam, and other settings on the page.

app setting, like language setting, date choice, app question feedback (no seller, if you want to contact with us, please mail with

kussla_service@163.com)

How to playback on your phone



Click it to switch Front or Rear Cam

flip the rear cam

Click it to Zoom the video screen

Click it to turn on/off the microphone quickly

Click it to pause/star recording

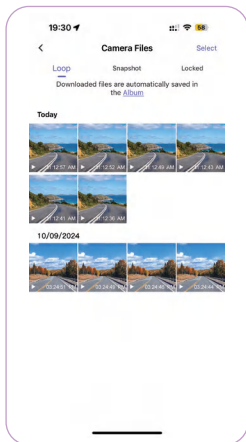
Click it to tack a photo

Camera file: 3 folder

Loop

Snapshot

Locked



Camera Setting: You can do some dash cam setting here , like Loop-Recording , Parking Montion , Format Memory Card.....



Download: you can choose to download the recording file on your phone directly .

After download the file, you can choose ONE-KEY Share it with Your Friends.

Screenshot: you can pause the recording and click screenshot , then easily save that moment in your phone.

Delete: choose and delete the recording file.

- Installation Guidance (details) -

Please test both front and rear cam before install it

Insert the rear cam cable into front dash cam - insert the front cam Type-C port into front dash cam - insert the dash cam charger on your car - Any question please mail with us : kussla_service@163.com

(If there is a problem with the dash cam before installation, you can contact with us to deal with it in time without wasting installation time. If there is a problem after installation, it can also be ruled out that it is not a machine problem but an installation problem.)

- Install Front Cam -



Step 1: Insert the Memory Card

Before installation, please check the camera's normal function, and make sure you are using a high speed Micro Memory Card (speed Class 10 or above.), and format the card in the camera menu before recording.

Gently push the memory card in until you hear a click, and allow the spring release to push the card in/out.



Step 2: Installing the Camera onto the Windshield

1.Clean the front windshield



2. Paste static sticker firstly



Stick it on the windshield



3. adjust the right angle



You can rotate the camera 180° to record to record the your preferred direction.

4. Install the suction cup on static sticker



5. There are 2 ways to Power Charge :

- ① directly use the USB cable to charge
- ② Use the cigarette lighter charger to charge
(connect the usb cable firstly)



①



②



- Install Rear Cam -

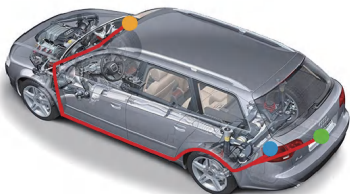
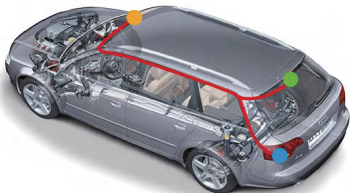


This dash cam does not have a reverse mode.

There are two ways to place the camera. (If don't have rear camera, please ignore)

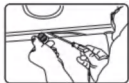
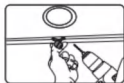
Way 1: Mount on the rear windshield. There is a 3M glue in the pack age for the rear camera . Please clean the rear windshield and find a suitable position, then paste the rear camera on the windshield.

Way 2: (Recommended!) Install it near the license plate. There are fixing screws inside the package to help you fix it



Detail on Rear Cam Installation

Select a flat and central place that near the number plate lamp at the rear of the vehicle.

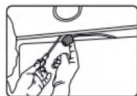
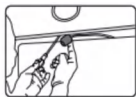


Attach tape to the bracket of the camera to hold the camera in position while installing, and drill two small holes , one for the first screw, the second to run the reverse camera.

Use a screwdriver to fix the first screw leaving the screw loose enough to adjust the camera.



Mark the place that suitable for the second screw and drill a small hole for it.

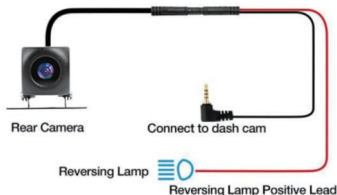


Fix the second screw and securely tighten both screws.



Need using these accessories during installing the rear cam

After the installation is completed, connect the rear plug to the rear camera interface of the recorder.



Then start the car engine to turn on the dash cam front and rear.

(if turn on front cam firstly then connect rear cam to dash cam, maybe will lead to short circuit black screen - reboot dash cam maybe can fix this problem)

- GPS Player -

Download GPS Player

- Disable the antivirus software before downloading and installing the player
- Need to use the computer to playback GPS location, player download link: <http://www.sunningsoft.com/en/pcgps.html>

Enable the GPS Player

- Turn on the player
- Choose the "Setting"
- Choose and Confirm the Map



Playback the Video on Player

- Connect the dash cam / memory card to computer
- Found the video file
- use the GPS Player to playback the recording file

Important Information about GPS

1) Enter dash cam " Sys Setting " - Found the "Satellite Information" , As long as there is a green quantity reach up to 40+ will be successful positioning. (when successfull positioning , the GPS icon displays a green icon





2) After successful positioning, connect the sd card with the computer , you can download the GPS Player on this.

3) Need to Disable the antivirus software before downloading and installing the player!

- Questions & Answer -

Q1: Camera can't turn on?

A: There are 3 reasons that can cause this problem:

- 1) The dash cam needs continuous power supply, just check if the power connection is normal.
- 2) The dash cam needs to be reset, just connect the power, use a pin to insert the RE Little Hole (as below photo 1 and restart the camera.
- 3) A defective card can cause the camera not to turn on, just remove the card or get a new card and insert it into the camera.

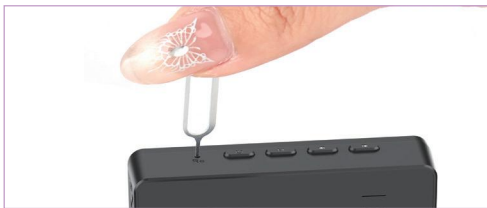


photo 1

Q2: If Rear Cam Not Display:

A: There are 4 reason that can cause the problem:

- (1) Please used our dash cam charger to charge it.

- (2) Please try to press "Up Button" to switch the recording screen
- (3) Please do not plug in rear cam's charger port (AV-IN) after the dash cam is turned on, otherwise it will cause the recorder to short-circuit and black screen. (Restart may fix the problem)
- (4) Reconnect the rear cam cable, especially the connection of the two sections of the rear cam cable part.

Q3: Camera automatically stop recording?

A: There are 2 reason that can cause the problem:

- (1) Format the memory card in setting menu. (The G-sensor might be triggered too often and locks too many video files, try lower sensitivity)
- (2) Replace a new Memory Card to test (Class10 High Speed 64-512G)

Q4: Camera auto Power off / on.

- A:(1)Please use USB Type -C Cable to test if the if the car charger is broken.
- (2) Remove the Memory Card and let the camera charging using dash cam cigarette charger included in the box. Then reset the camera again.

Q5: Keeping Saying Format Memory Card?

A:(1)Please format the Memory Card - then reset the default setting on dash cam - then use the needle pin to inset the RE little hole to reset the dash cam (item will auto turn off and turn on again after reset successfully)

(2)Please use another memory card to test

(3)Suggested set to lower G-sensor and recommended to format your Memory Card after using a time.

Q6: Dash Camera Freezing/Lagging or Crashing?

A: Use the card needle to insert the RE little hole to restart the camera (when hear the clicks sounds , it was reset successfully or when dash cam auto turn off and turn on again , then it was reset successfully)

Q7: Some of video files are missing only can see the front and after file.

A: Hitting too much can cause file corruption, but we can fix it. Please copy from the before to after files of the accident together to us: kussla_service@163.com

Q8: Camera automatically stop recording?

A: Format the memory card in setting menu. The G-sensor might be triggered too often and locks too many video files, try lower sensitivity.

Q9: Dash cam can not auto turn on/off with your car:

A: (1)Please using our dash cam charger to charge it

(2) After excluding (1), please Reset the dash cam factory setting, press ok button to stop recording firstly, then press twice the left middle button and choose the " default Setting" press ok button and confirm" ok" choice - Please take off the card and use a needle to insert the RES little hole

Q10: The recording video keep flashing / colourful ?

A: (1)Verify that Frequency option is set to 60Hz (North America) or set accordingly.

(2)Restore Factory Setting or use a needle to insert the RES little hole to reset

Q11: The dash cam display red light but black screen.

A: (1) Set the Screen Save? Press "Menu Button" - choose the "Screen Saver" - close it

(2) Use our dash cam charger to charge it - Reset it (RES) - Long press the "Power Button" to turn it on again

Q12: The camera gets HOT?

A: It is normal for your camera to run slightly hot. Due to it is recording video at high speed, the dash cam maybe hot during using. (no more than 170°F/75°C)

Q13: Can not save the Date & Time setting?

A: Please use our cigarette charger charging it for 30 minutes - Take off the card and use a needle to insert the RES little hole - Set the default setting - Set the date and time, then exit the menu and manually turn off the dash cam = save the setting. Do not cut off the power, keep charging for about 20 minutes

Q14: Any other questions or need other accessory replacement(like suction cup ?)

A: Contact the amazon seller's email, We are always here:
kussla_service@163.com

- After-Sales Service -

Warranty

- All our products are covered by 1-year warranty.
- Mail: kussla_service@163.com

Customer Support

- For questions, support, or warranty claims, contact us at AMAZON. We will reply you within 24 hours.
- If you can provide the photos or video to show your problem, we will be appreciated.
- **IMPORTANT:** Proof of original purchase (Online order receipt is also accepted) is required for any warranty service.

Kussla is firmly committed to continually improving our products, services and customer experience. As our VIP customer, if you have any thoughts on how we can do better, we would appreciate your constructive feedback and suggestions. Please contact us.



Thank you for choosing Kussla !

- FCC Warning -

This device complies with Part 15 of the FCC Rules. Operation is subject to the following two conditions:

(1) This device may not cause harmful interference, and (2) this device must accept any interference received, including interference that may cause undesired operation.

NOTE 1: This equipment has been tested and found to comply with the limits for a Class B digital device, pursuant to part 15 of the FCC Rules. These limits are designed to provide reasonable protection against harmful interference in a residential installation. This equipment generates, uses and can radiate radio frequency energy and, if not installed and used in accordance with the instructions, may cause harmful interference to radio communications. However, there is no guarantee that interference will not occur in a particular installation. If this equipment does cause harmful interference to radio or television reception, which can be determined by turning the equipment off and on, the user is encouraged to try to correct the interference by one or more of the following measures:

- Reorient or relocate the receiving antenna.
- Increase the separation between the equipment and receiver.
- Connect the equipment into an outlet on a circuit different from that to which the receiver is connected.
- Consult the dealer or an experienced radio/TV technician for help.

NOTE 2: Any changes or modifications to this unit not expressly approved by the party responsible for compliance could void the user's authority to operate the equipment.

RF Exposure Statement

To maintain compliance with FCC'S RF Exposure guidelines, This equipment should be installed and operated with minimum 20cm between the radiator and your body. This device and its antenna(s) must not be co-located or operation in conjunction with any other antenna or transmitter.