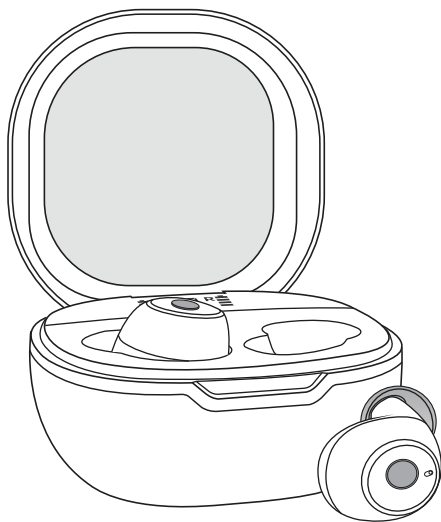


# USER MANUAL

1120



16-Channel Digital OTC Hearing Aids

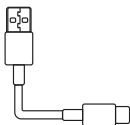
# Accessories List



1 OTC Hearing Aids\*1



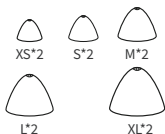
2 Charging Case\*1



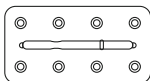
3 USB Cable\*1



4 Cleaning Brush\*1



5 Ear Tips\*10



6 Wax Guard\*8

Tips Card

7 Tips Card\*1

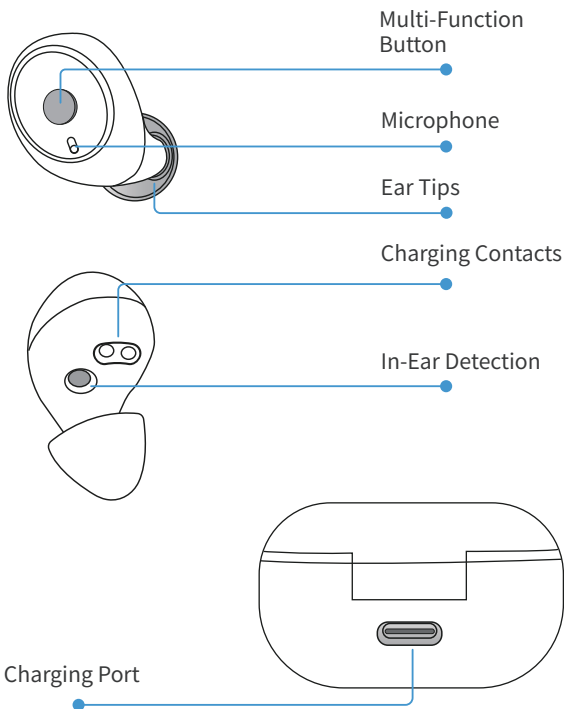
User  
Manual

8 User Manual\*1

## 💡 Tips:

The hearing aids are pre-assembled with "M" size ear tips.

# Product Overview



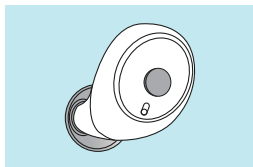
- Recycle charging  
≈ 4 times

- Fully charge time  
≈ 2 hrs

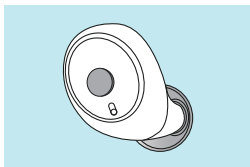
- Hearing mode working time  
single ≈ 12 hrs    comprehensive ≈ 60 hrs

- Music mode working time  
single ≈ 5 hrs    comprehensive ≈ 20 hrs

# Instructions For Use



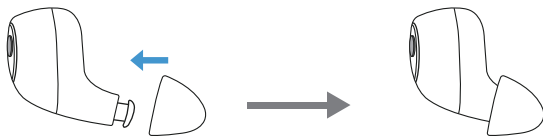
L: Left ear



R: Right ear

## Assemble the ear tips

- Assemble the ear tips as below picture.



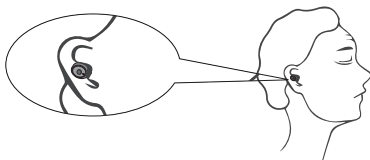
## Instruction



The hearing aids comes with 5 pairs of ear tips, choose the one that suits you best. Mismatched ear tips sizes may cause whistling.

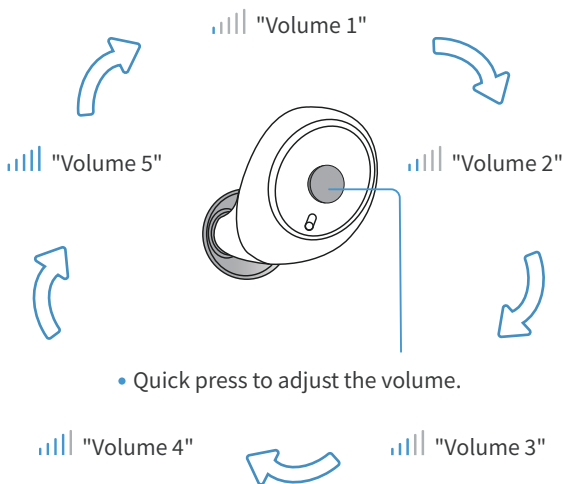


This device supports memory function. It will automatically save the mode and sound volume.



- Please choose the appropriate size ear tips according to your ear canal size, and wear it in the correct way.

# Volume Control



- Quick press to adjust the volume.

## 💡 Tips:

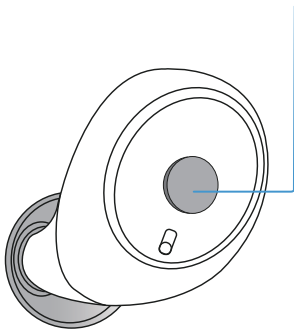
The volume control has voice prompts. The volume goes from lowest "Volume 1" to highest "Volume 5" and then back to lowest "Volume 1".

## On and Off

- The hearing aids supports in-ear detection. After putting on the hearing aids, the hearing aids will automatically turn on after hearing the "Power on-Du..Du..Ding" prompt tone. After taking the hearing aids off and putting it into the charging case the hearing aids will automatically turn off.

# Switch Hearing/Music

- Press and hold for 3 seconds to switch between "Music Mode"/"Hearing Mode"



## Hearing Mode

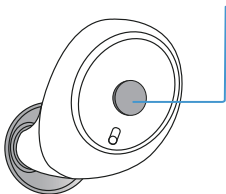
When you hear "Hearing mode", it means that the hearing aids has switched to hearing mode and is suitable for people with hearing loss.

## Music Mode

When you hear "Music Mode", it means that the hearing aids has been adjusted to the music mode. The music mode can connect to the Bluetooth of the mobile phone for listening to music and making phone calls.

# Switch Mode

- Double-click to switch hearing aids modes.



## Mode 1

When you hear "General mode", it means that the hearing aids have been adjusted to general mode. The general mode is used in daily life and can be used in most daily scenarios.

## Mode 2

When you hear "Indoor mode", it means that the hearing aids has been adjusted to the indoor mode, which is suitable for relatively quiet environment, such as home, company, restaurant and so on.

## Mode 3

When you hear "Outdoor mode", it means that the hearing aids has been adjusted to the outdoor mode, which is suitable for noisy environments, such as downtown, parks, buses and other scenes that need to travel.

## Mode 4

When you hear "Tinnitus mode", it means that the hearing aids have been adjusted to this mode. Tinnitus mode is suitable for tinnitus patients or those who want to reduce their sensitivity to surrounding sounds. This mode has no sound amplification function.

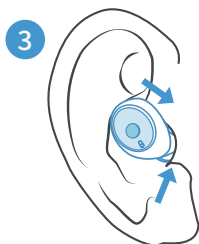
# How To Put On



- Clean the ear canal. Push the hearing aids into the canal.



- Gently turn the hearing aids left and right to adjust to a comfortable angle.



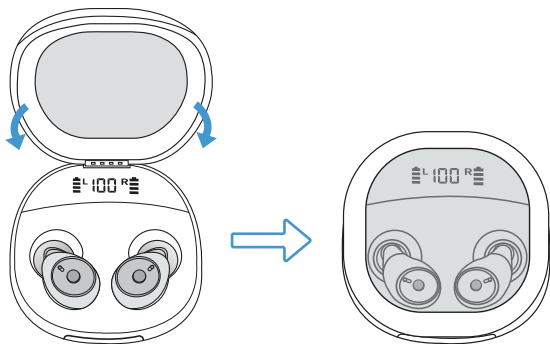
- After adjusting the angle of the hearing aids, push them into the ear canal.



- Push the hearing aids deep into the ear canal until it feels comfortable and has a complete seal.

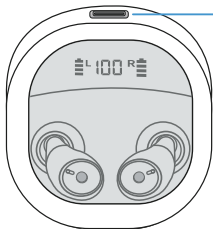


# Charging Indicator



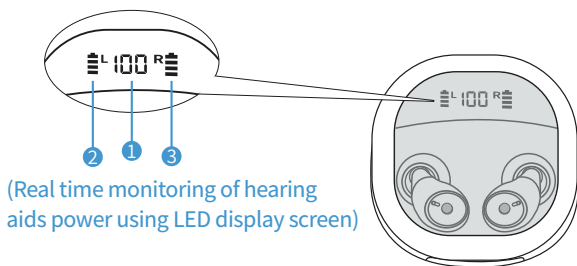
## 💡 Tips:

When charging, after placing the hearing aids into the charging case, please close the charging case to ensure it is charging.



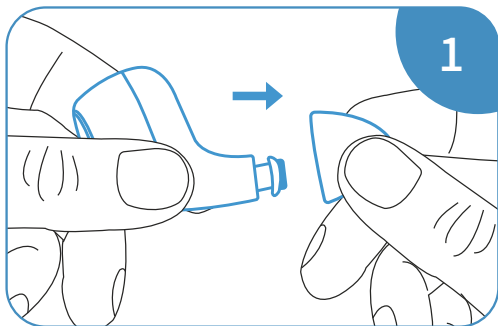
- If the charging case is out of power, please use a USB cable to connect here for charging.

# Charging Indicator

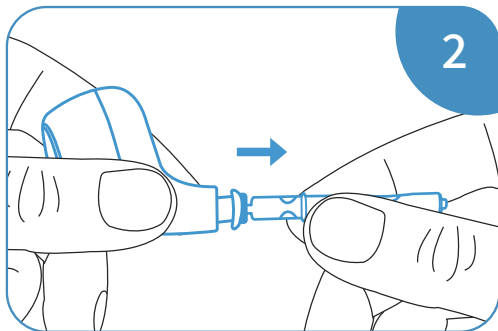


- 1 The digital display on the front of the charging case shows the real-time battery level of the charging case. The flashing value means charging is in progress, and the stable value means charging is completed.
- 2 "L" is the electricity of the left ear hearing aids, the square block is the real-time power of the hearing aids, and one grid is 25% of the electricity. A flashing square indicates charging is in progress, and a steady square indicates charging is complete.
- 3 "R" is the electricity of the right ear hearing aids, the square block is the real-time power of the hearing aids, and one grid is 25% of the electricity. A flashing square indicates charging is in progress, and a steady square indicates charging is complete.

# Replace Wax Guard

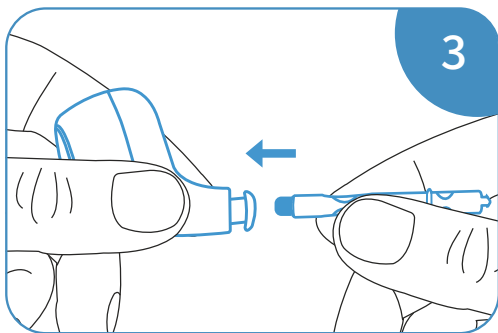


- Please remove the ear tips.

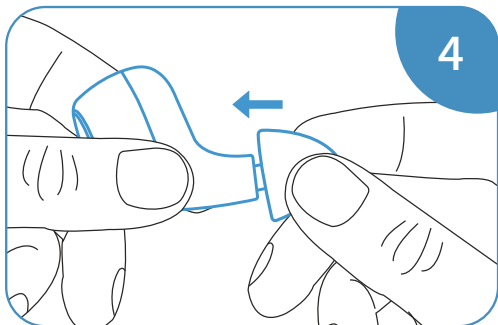


- Remove the old wax guard using the tip of the wax guard tool.

# Replace Wax Guard

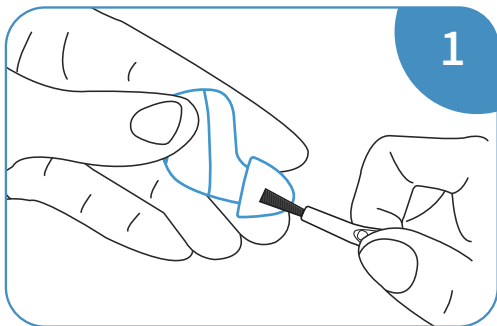


- Then use the round end of the wax guard tool to install the new wax guard.

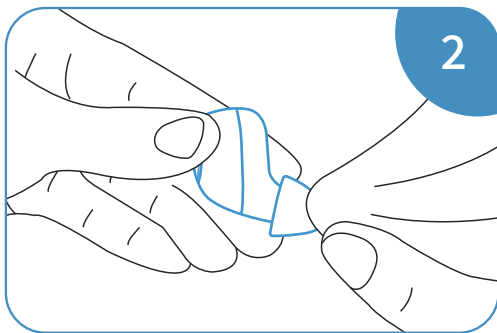


- Cover back the ear tips to complete the replacement.

# Cleaning Hearing Aids

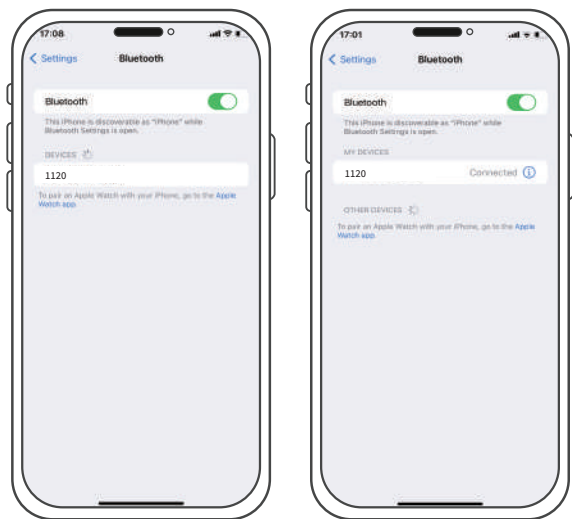


- When cleaning the ear tips, the sound outlet should face down, and use a cleaning brush to clean the dirt on the ear tips.



- Remove smudge or oil stains from the ear tips with a cleaning wipe or rag.

# Bluetooth Connection



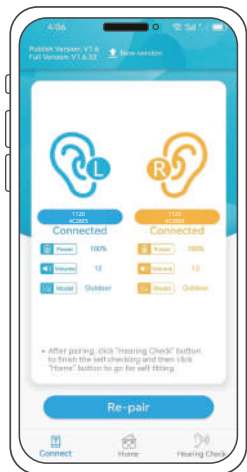
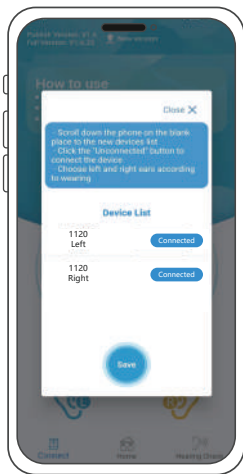
Step 1: Turn on hearing aids.

Step 2: Turn on the Bluetooth function on your phone.

Step 3: When the "1120" appears in the Bluetooth search interface on your phone, click it to connect.

Step 4: After a successful Bluetooth connection, you can switch between "music" and "hearing aids" modes via the multifunction buttons on the hearing aids.

# APP



Step 1: Scan the QR code and download the APP "ForSound".



Step 2: Open the APP, click "Pair".

Step 3: Find the device name "1120", make sure both devices are connected, and save.

Step 4: After the pairing is successful, adjustments can be made on the APP.

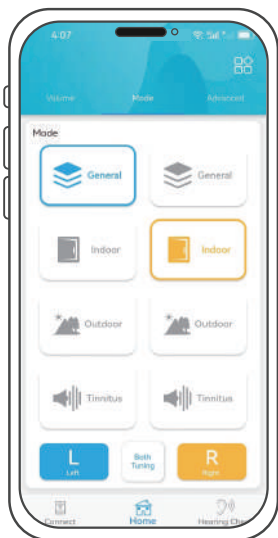
# Volume Control



- Tap "L" and adjust left ear volume individually.
- Tap "R" and adjust right ear volume individually.
- Tap "Both Tuning" to control the left and right ears to adjust the volume synchronously.



# Mode Switch



**Mode 1** "General" is suitable for most people's different environments.

**Mode 2** "Indoor" is suitable for home or office.

**Mode 3** "Outdoor" is suitable for outdoors or noisy places.

**Mode 4** "Tinnitus" is only suitable for people who are troubled by tinnitus (This mode does not have a sound amplification function)

## 💡 Tips:

The mode switch adapts to different environments, and can be switched individually, or you can click "Both Tuning" and switch together.

# Advanced Settings



- Each ear can adjust 4 levels of frequency, which are used to adjust to your hearing loss in order.
- "Noise Suppression" : Add if there is too much noise, and reduce if the amplified sound is lower for you.
- "Vocal enhancement" : If the people around you speak in a weaker voice for you, add.
- "Impact noise" : Can effectively alleviate some harsh sounds, you can adjust according to the use of the scene.
- "Wind noise" : Adjust the intensity of wind noise suppression according to the size of the wind in your environment.

# Hearing Loss Test



Step 1: Please check your environment and check the 3 conditions.

Step 2: Tap "Start hearing check".

Step 3: Ensure a relatively quiet environment and click "Start" to perform the hearing test.

# Hearing Loss Test



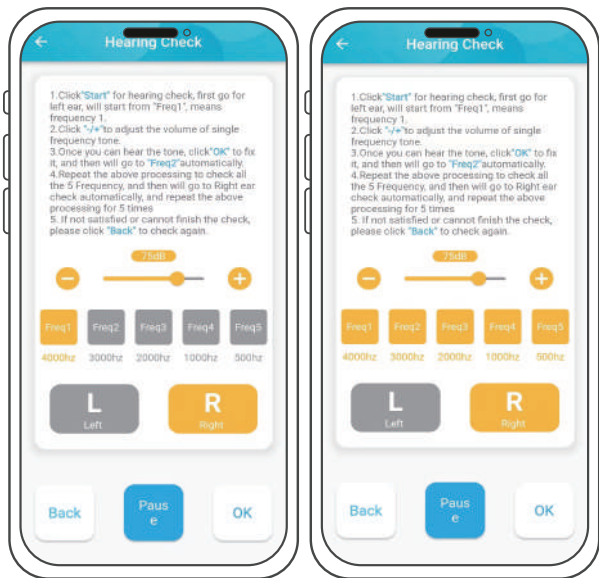
Step 1: Click on "Start" The play button starts playing the single frequency tone.

Step 2: The volume of single frequency tone can be adjusted by pressing the "+" or "-" button.

Step 3: When you can hear the minimum single frequency tone, click "OK".

Step 4: Test for five frequencies successively.

# Hearing Loss Test



Step 1: Click on "Start" The play button starts playing the single frequency tone.

Step 2: The volume of single frequency tone can be adjusted by pressing the "+" or "-" button.

Step 3: When you can hear the minimum single frequency tone, click "OK".

Step 4: Test for five frequencies successively.

# Hearing Loss Test



Step 1: After the test is completed, click "Start Self Fitting" on the pop-up page.

Step 2: Just wait for the refresh to complete.

# Technical Specifications

Maximum Output	$\leq 108+3\text{dB SPL}$
Average Output	$105\pm 4\text{dB SPL}$
Peak Gain	$35\pm 5\text{dB}$
Average Gain	$30\pm 5\text{dB}$
Frequency Range	$\leq 400\text{Hz}\sim\geq 5000\text{Hz}$
Total Harmonic Distortion(THD)	500Hz: $\leq 2\%$
	800Hz: $\leq 2\%$
	1600Hz: $\leq 2\%$
Equivalent Input Noise	$\leq 15\text{dB}$
Operating Power Supply	$\leq 2\text{mA}@3.7\text{V}$

# Troubleshooting

Problem	Possible Cause	Solution
Whistling	Device is put on incorrectly.	Re-adjust the device to make sure it is in the correct position.
	Too much earwax.	Clean ear wax, replace the ear tips.
	Wrong size of ear tips.	Choose the best fit ear tips.
No sound or Intermittent sound	Device is turned off.	Turn on the device.
	Sound hole is blocked by dirt.	Clean the device, replace the ear tips.
	Volume is set to be low.	Increase volume.
Short battery life	Device is on while not in use.	Turn off the device when not in use, and recharge it before using it again.

**NOTE:** If the problem cannot be solved by the above list of methods, please contact our customer service.



# Cautions

- For any injuries or pain after using the device, stop using it immediately and seek professional help from a hearing aids center or ENT physician.
- Do NOT take NMR OR CT scan exams with your device as it may cause damage to the device.
- In extremely noisy settings such as mining fields or explosion, turn off the device to avoid hearing damage.
- Products with high moisture level can cause damage to the device. Remove the device before using such products such as hair gel or face cream etc.
- Turn off the device when not in use. Charge it at least once every 6 months to promote optimal battery life.



**Avoid water:** Keep the device from water. Remove the device before swimming, bathing, showering or face washing.




**Avoid heat:** Do not leave the device under direct sunlight or in places with excess heat.



**Avoid shock:** Avoid dropping the device to the ground from high above. Keep it from violent shock.

# Thank You For Reading

## CERTIFICATE

Product name	Hearing aids
Manufacturer Part Number	1120
Product validity period	5 years
Inspectors	
This product conforms to national standards and industry standards, and has passed the inspection.	

Please keep the manual properly and use the operating instructions on the manual. If you have any questions, please feel free to call us, thank you!

This device complies with part 15 of the FCC Rules. Operation is subject to the following two conditions: (1) This device may not cause harmful interference, and (2) this device must accept any interference received, including interference that may cause undesired operation.

Any Changes or modifications not expressly approved by the party responsible for compliance could void the user's authority to operate the equipment.

**Note:** This equipment has been tested and found to comply with the limits for a Class B digital device, pursuant to part 15 of the FCC Rules. These limits are designed to provide reasonable protection against harmful interference in a residential installation. This equipment generates uses and can radiate radio frequency energy and, if not installed and used in accordance with the instructions, may cause harmful interference to radio communications. However, there is no guarantee that interference will not occur in a particular installation. If this equipment does cause harmful interference to radio or television reception, which can be determined by turning the equipment off and on, the user is encouraged to try to correct the interference by one or more of the following measures:

- Reorient or relocate the receiving antenna.
- Increase the separation between the equipment and receiver.
- Connect the equipment into an outlet on a circuit different from that to which the receiver is connected.
- Consult the dealer or an experienced radio/TV technician for help.

#### FCC Radiation Exposure statement

The device has been evaluatec to meel general RF exposure requirement. The device can be used in porlable exposure condition without restriction.