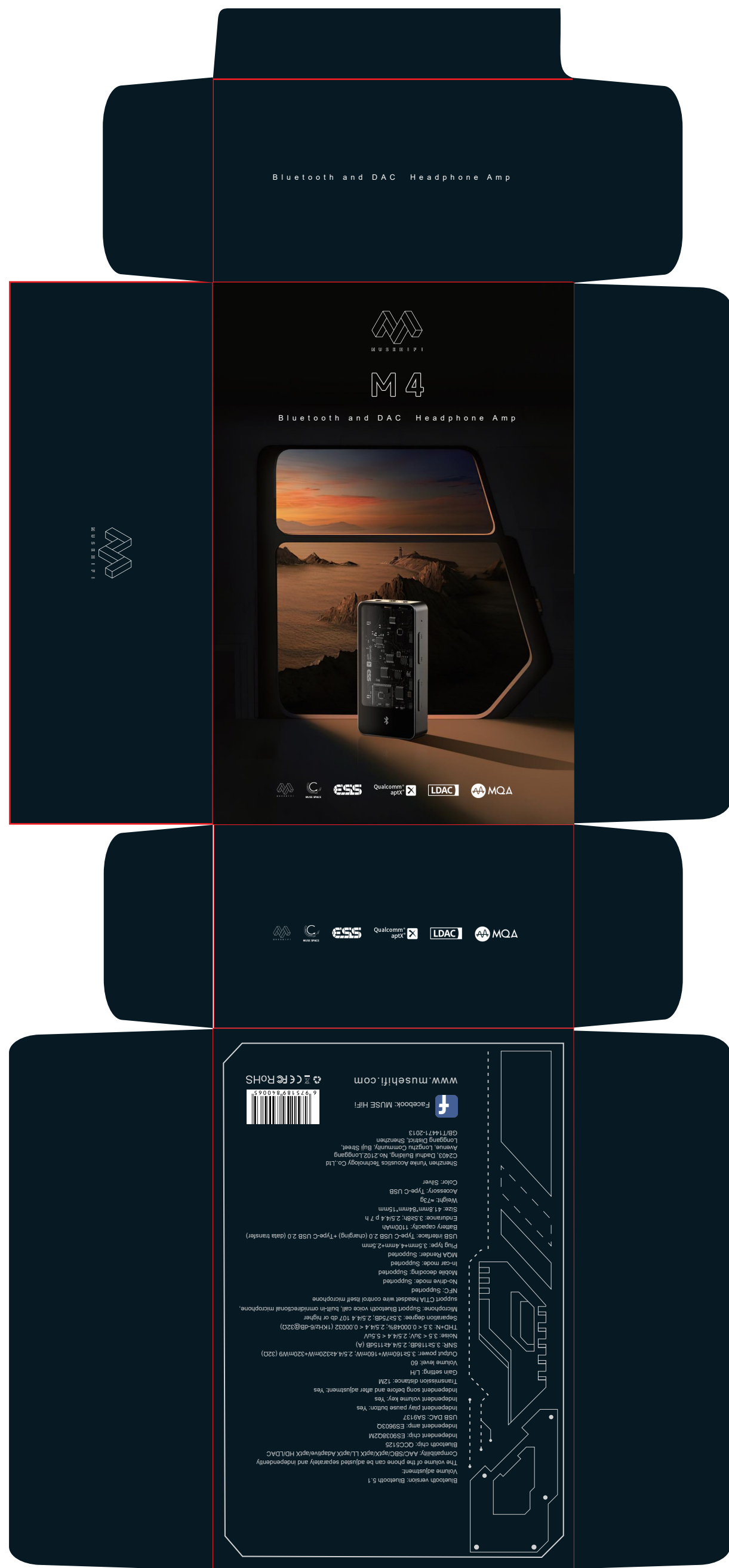


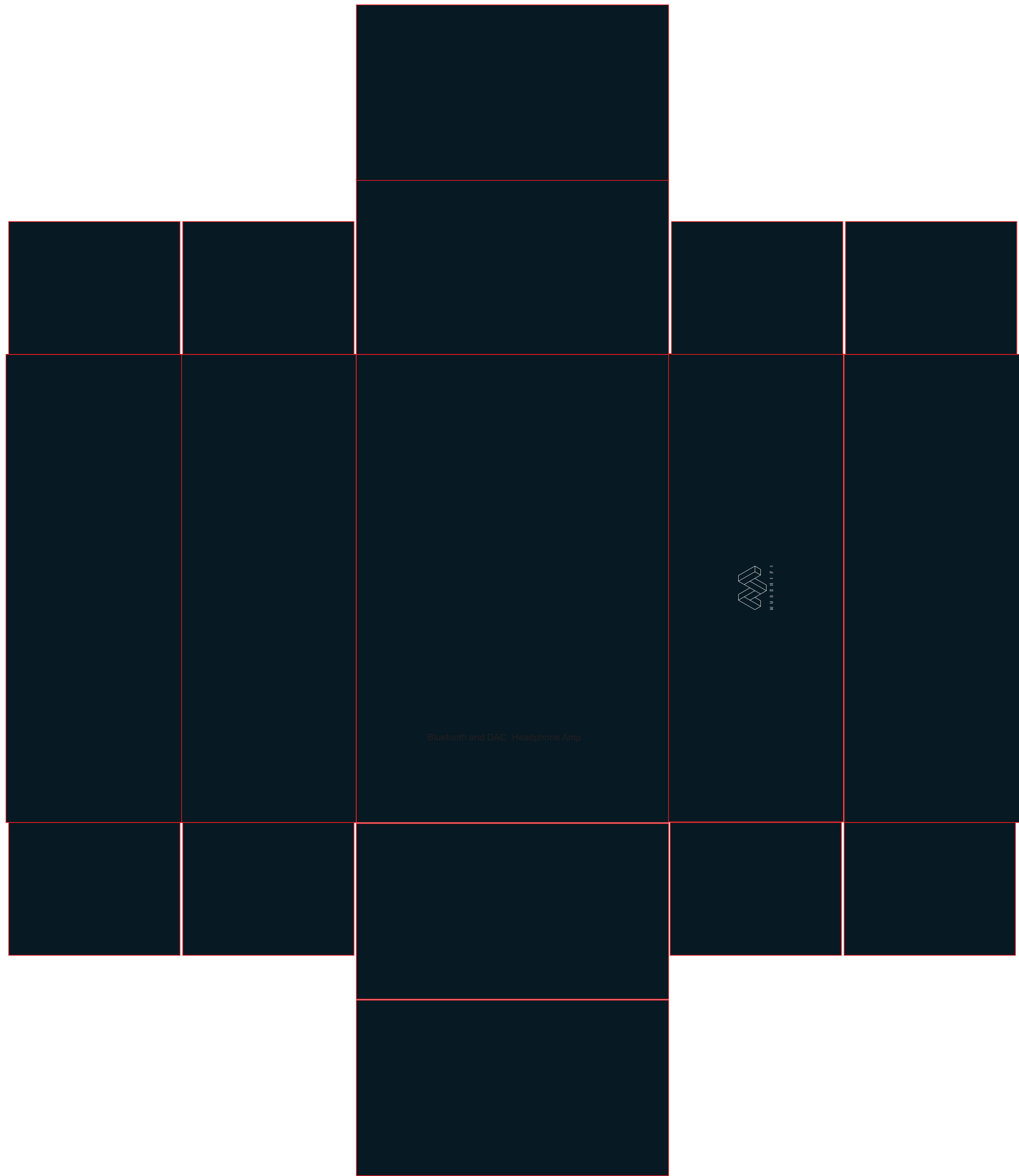
12cm X 8cm X 4.5cm



外盒整体材质：400g单粉+哑膜
工艺：盒子正面所有logo + 文字做uv处理
注：外盒抽出部位做包裹处理 刀版需调节




抽屉盒整体材质：170g单粉印刷+1100g灰板
注：抽屉盒印刷，注意观察盒型反面整体参考图
留意正反位置 保证整体效果



配件盒整体材质：400g单粉
工艺：模切半圆手指位

说明书10cm X 6.5cm

做书籍钉装

 M4 Bluetooth and DAC Headphone Amp ESS, LDAC, MQA	Product introduction Sampling rate lamp (Wired mode) Please use and power off Answer and hang up the phone Music playback High-low gain indicator / Boost volume level prompt / Filter switching level prompts Bluetooth Light	Product introduction Sampling rate lamp (Wired mode) Please use and power off Answer and hang up the phone Music playback High-low gain indicator / Boost volume level prompt / Filter switching level prompts Bluetooth Light	Product introduction Charging light Charging Data NFC ID	Operation instruction Power on: Press and hold A for about 3 seconds Shutdown: Press down A for about 5 seconds *After turning on, indicator 1 blinks to indicate the volume level, blinks once for level 1, blinks 5 times for level 5, the greater the level, the greater the sound, pay attention to adjust the sound to protect hearing Reset: Touch E with a pointed object for about 12 seconds Bluetooth pairing: Indicator 2 blinks 1. Connect the device after boot, Bluetooth name: MUSE HFI M4 2. Answer phone call (also touch the NFC area of the phone to touch the NFC area of the M4 (Apple phones do not support NFC function), Play, pause, call, hang up, cancel, press A Volume + and - : Press D+ and D- Filter adjustment: Long press D- Gain mode adjustment: B (R: high gain red, G: low gain blue) Wind mode: Connect M4 to mobile phone or computer through OTG cable, and automatically enable wind mode Wired mode sampling rate recognition (indicator 3): White: Power on but not played Blue: 44.1K-48K Green: 88.2K-96K Yellow: 176.4K-192K Cyan: 352.8K-384K Red: DSD	Filter level , indicator 1 blinks once for type 1, blinks 7 times for type 7 1. Rapid roll-off of linear phase Fast Roll-Off Linear Phase Filter Low-order smooth, neutral tone, naturally suitable for strong and fast songs 2. Slow roll-off of linear phase Slow Roll-Off Linear Phase Filter Low-order smooth, neutral tone, belongs to the most natural type 3. Linear phase fast cutting Apodizing Fast Roll-Off Linear Phase Filter Low-order smooth, neutral tone, suitable for fast-paced songs 4. Rapid roll-off of minimum phase Fast Roll-Off Minimum Phase Filter (default) High-order smooth, neutral mid-frequency, thick and warm, suitable for vocals and slow songs 5. Minimum phase slow roll-off Slow Roll-Off Minimum Phase Filter Medium-order smooth, mid-frequency, good for listening to strings 6. Minimal phase fast mixing Hybrid Fast Roll-Off Minimum Phase Filter Medium-order smooth, mid-frequency, good for listening to strings 7. Linear Phase Shift Biquad Filter Advanced reverb, warm tone, neutral tone	Product list M4*1 Charging cable*1 Upgrade package (need to be purchased separately, please contact your local dealer) 1. Type-C to Lightning 2. Type-C to Type-C 3. USB plug 4. Leather protective case	safety instructions 1. Do not pull the wire directly, so as not to deform or break the wire and cause damage to the USB port 2. When plugging and unplugging the headphone cable, it should be plugged and unplugged in parallel to avoid the phenomenon of pulling and twisting the cable 3. Please keep the product away from water, fire, strong magnetic fields and dust 4. For your personal safety, please avoid using the product in a dangerous environment 5. When not in use for a long time, please unplug the headset from the playback device 6. Please adjust the volume to an appropriate range to protect your hearing, please refer to the following recommended use 7. The product is placed in a humid or strong magnetic field for a long time, or it will be caused by immersion in water 8. Do not repair, disassemble or put the product in a place with water 9. The product cannot be used normally or have other quality problems, please log in to the service center of the official website to inquire about relevant information, or send an email to musehfi@foxmail.com for consultation 10. The time-guarantee period starts from the date of issuance of valid vouchers (such as invoice receipts, The authentication and verification (if the contents of the three-guarantee vouchers belongs to Shenzhen Yunka Audio Technology Co., Ltd.)	warranty 1. Under normal operation, if there are any functional problems caused by manufacturer's manufacturing defects, you can enjoy a free replacement for 3 months from the date of purchase and a one-year free warranty service (only in mainland China, other regions will be governed by local laws, if available, please keep the purchase receipt or invoice as a guarantee.) 2. The following situations do not belong to the scope of replacement and warranty: --- Failure caused by human factors such as shock, impact, drop, bending, twisting/pulling, etc. caused by improper use and storage --- The failure caused by the user's unauthorized dismantling or dismantling and/or using by non-company's special maintenance point --- The product is placed in a humid or strong magnetic field for a long time, or it will be caused by immersion in water --- Malfunctions caused by natural disasters --- Failure to provide a valid warranty certificate (receipt) report (the receipt from manufacturer (MUSE HFI (China)) and the judgment of the maintenance center is determined by the professional maintenance personnel of MUSE HFI, maintenance personnel of MUSE HFI) 3. The replacement and warranty services are only for the main part of the headset and other accessories and gels are not within the scope of replacement and warranty 4. For paid maintenance costs, please contact customer service+86755-84201610	After-sales process 1. If the MUSE HFI headset purchased by the user fails, please contact the original purchaser first. If the seller refuses to provide after-sales service, please contact the customer service center of the official website to inquire about relevant information, or send an email to musehfi@foxmail.com for consultation 2. During the repair period, consumers need to bear the shipping cost of returning the factory. After the repair is completed, our company will send it back to the customer with free shipping 3. It is recommended that consumers purchase products from local agents in order to obtain faster and more convenient pre-sale and after-sales services 4. Do not repair, disassemble or put the product in a place with water 5. If the product cannot be used normally or have other quality problems, please log in to the service center of the official website to inquire about relevant information, or send an email to musehfi@foxmail.com for consultation	Precautions 1. For your safety, please avoid using the headset in a dangerous environment. 2. Please adjust the volume to an appropriate range to protect your hearing. 3. Do not place the earphones in places that are wet or covered by strong magnetism for a long time. 4. When not in use for a long time, please unplug the headset from the playback device. 5. Do not disassemble the headset by yourself.
---	---	---	--	---	--	---	--	--	--	--

FCC Information and Copyright

This equipment has been tested and found to comply with the limits for a Class B digital device, pursuant to part 15 of the FCC Rules.

These limits are designed to provide reasonable protection against harmful interference in a residential installation. This equipment generates,

uses and can radiate radio frequency energy and, if not installed and used in accordance with the instructions, may cause harmful interference

to radio communications. However, there is no guarantee that interference will not occur in a particular installation. If this equipment does

cause harmful interference to radio or television reception, which can be determined by turning the equipment off and on, the user is

encouraged to try to correct the interference by one or more of the following measures:

- Reorient or relocate the receiving antenna.
- Increase the separation between the equipment and receiver.
- Connect the equipment into an outlet on a circuit different from that to which the receiver is connected.
- Consult the dealer or an experienced radio/TV technician for help.

15.19 Labelling requirements.

This device complies with part 15 of the FCC Rules. Operation is subject to the following two conditions:

- (1) This device may not cause harmful interference, and
- (2) this device must accept any interference received, including interference that may cause undesired operation.

changes or modifications not expressly approved by the party responsible for compliance could void the user's authority to operate the equipment.

FCC RF warning statement: the device has been evaluated to meet general RF exposure requirement , The device can be used in portable exposure condition without restriction.