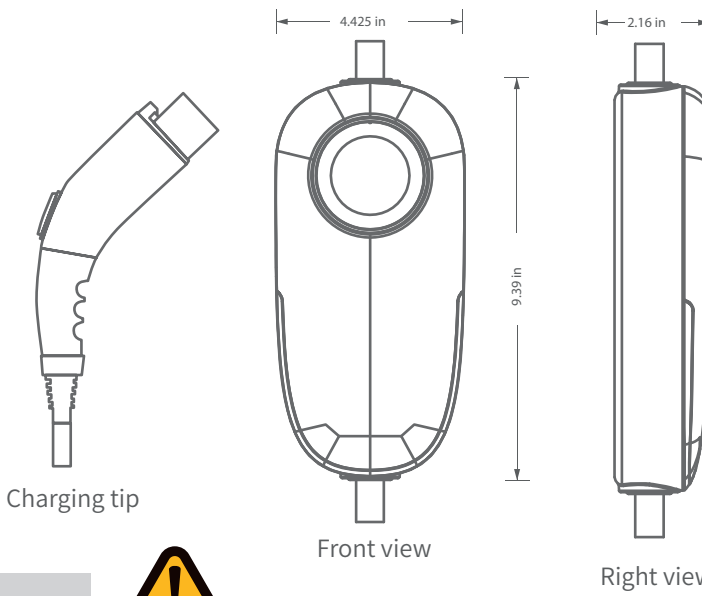


### Introduction to Charging station

Portable New Energy EV Charger Gray is a kind of charging equipment specially designed for new energy vehicles, compact and lightweight, easy to carry, compatible with a variety of car models, through the household power supply can be charged for electric vehicles, to meet the needs of emergency or daily charging, the use of multiple safety protection design, to ensure that the charging process is safe and reliable, whether it is in the home, the office or on the road, portable new energy electric vehicle AC charging station can provide charging for electric vehicles at any time. Whether at home, office or on the go, the portable new energy electric vehicle AC charging station can provide charging for electric vehicles at any time.



### Warning

- 1. This product is a 32A plug, can only be inserted into sockets with specifications greater than 32A, the socket wiring diameter must be >6mm<sup>2</sup>, the use of non-compliant or aging sockets, cables will lead to serious heating of the cable, or even burned.
- 2. It is prohibited to privately disassemble the machine and change the internal wiring of the product. If the product fails, it needs to be troubleshootted and maintained by professional personnel (or maintained under the guidance of professional personnel);
- 3. Strictly prohibit touching the charging gun plug or charging socket inside, keep the charging gun plug dry, no foreign objects;
- 4. Before charging, make sure that the vehicle is turned off and the gun is firmly connected before starting charging;
- 5. It is strictly prohibited to plug and unplug the gun head during charging, and the gun head button should be pressed and held down before unplugging the gun after stopping charging, so as to avoid irreversible damage to the charging pile and the car.
- 6. Avoid charging in thunder and rainy weather, and prohibit children from approaching the charging process to avoid danger;
- 7. In case of emergencies, such as water in the product, smoke and fire, the power supply should be cut off immediately.

### Product Parameters

Pseudolaric acid	Portable New Energy EV Charger Gray	Model:JY-ACP32
Output Current Range	0~32A	
Input Voltage	AC240V±15%	
Input Voltage Frequency	50/60Hz±1Hz	
electrical insulation resistance	≥10MΩ	
Standby power consumption	5W	
Leakage protection type	A+DC6 / B	
Working environment temperature	-30°C~+70°C	
Storage ambient temperature	-30°C~+70°C	
safety protection	Over-voltage protection, under-voltage protection, short-circuit protection, leakage protection lightning protection, electromagnetic protection, overcharge protection, overload protection	
protection class	IP66	
activation method	Plug and Charge, APP	
current regulation	4-speed adjustable	
display screen	liquid crystal screen	
Gunline length	196.85 in	
Shell material	PC/ABSFlame retardant material	

Table:New energy vehicle charging pile technical parameters

### Operating Instructions

#### Usage method

1. The product is equipped with 8A - 10A - 16A - 32A adjustable current, long press the key for 2 seconds to unlock, press the key to select the required current, confirm and long press the key for 2 seconds to lock the current current (this process do not connect to the vehicle). Press the key to select the required current, after confirming, long press the key for 2 seconds to lock the current current (do not connect the charging gun to the vehicle during this process).
2. Insert the gun into the charging port in place to start charging (plug in the gun that is charging), the indicator panel will show the corresponding indicator represents that the charging gun is connected and can be charged normally, represents the state of charging, lights up represents the connection failure, please try again. (Different versions of the display mode is different)
3. When the power battery is fully charged, the charging will end automatically, if you need to interrupt the charging, please use the vehicle control to "end charging".



display screen

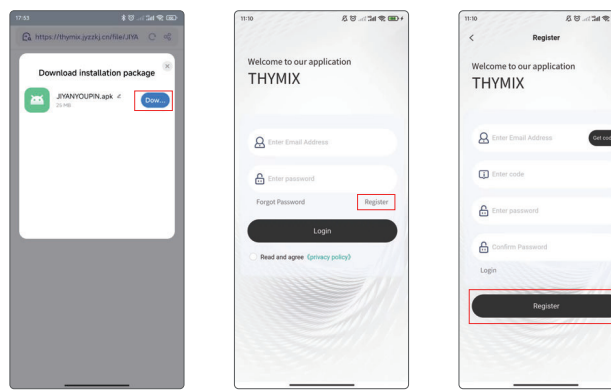
#### APP Operating Instructions

After the device is powered on, enter the Charging Pile Home Edition APP, and you can bind the device in the following way, see the following operation for details

- 1.Android version: Use your cell phone browser to scan the following QR code to pop up the download interface, click on the "general download", after downloading, you can install the APP after installation, use your email to register and log in, and enter the home page.



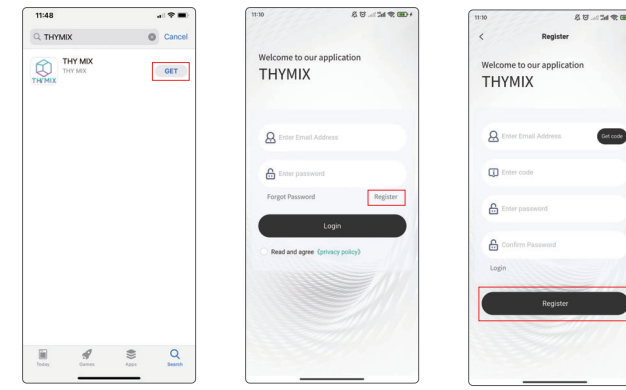
Android Version  
Scan code to  
download APP



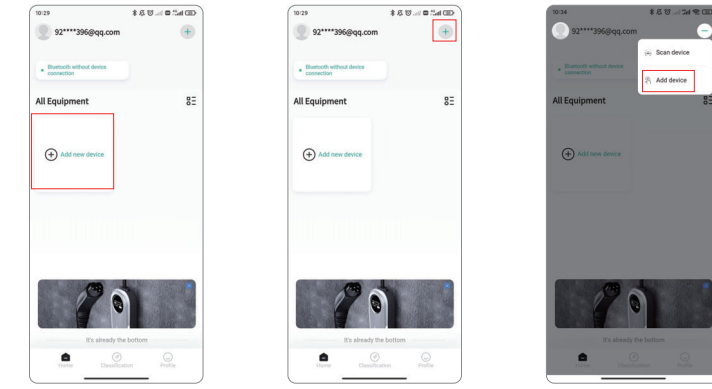
- 2.iOS version: Scan the code to download or enter the Apple Store, search for "THYMIX", find the corresponding APP, install it, and then use your email to register and log in to enter the homepage.



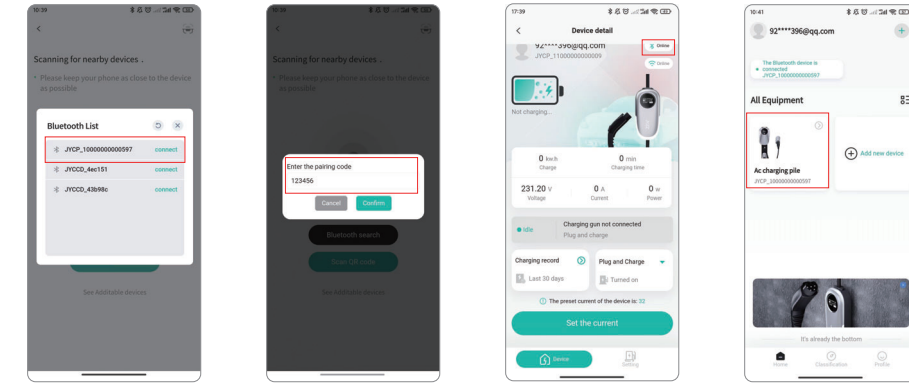
iOS Version  
Scan code to  
download APP



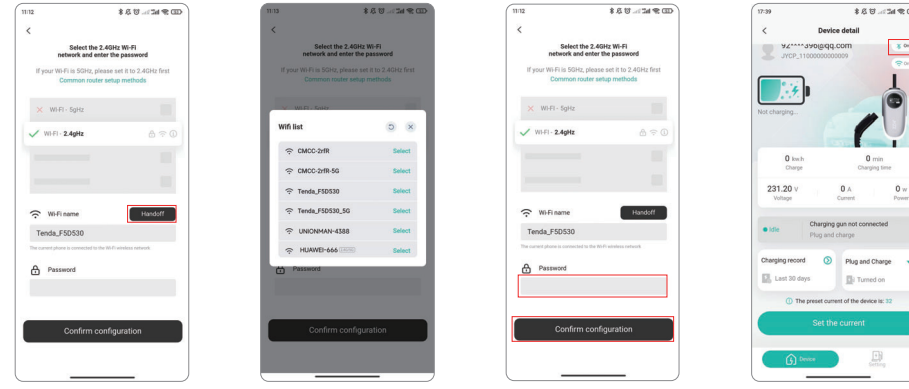
Search for devices to add Bluetooth by clicking "Add new device" or click "+" in the upper right corner and select "Add device" to search for Bluetooth.



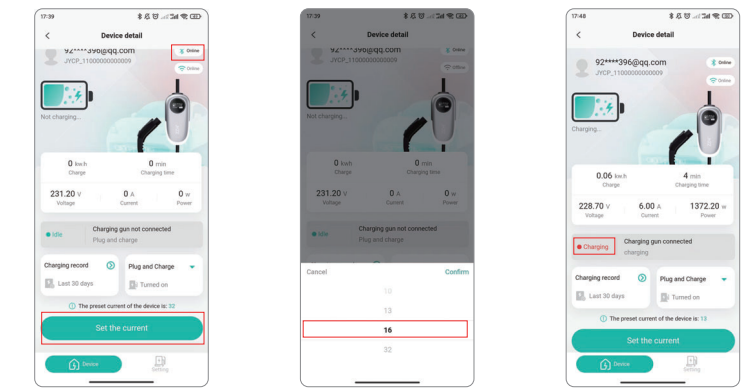
In the Bluetooth list, select the corresponding device's Bluetooth to start connecting, enter the pairing code and click confirm (factory default 123456), Bluetooth online represents the device binding success, return to the home page to see the bound device.



Connecting WIFI: Connecting WIFI requires connecting Bluetooth, after connecting Bluetooth, click on the signal icon, enter the configuration page and click on the switch, then select the WIFI you need to connect to (only connect to 2.4G network), then enter the password to confirm the configuration (there will be a prompt that the WIFI configuration has been successful), when you see the signal icon lights up to show the online indication that the WIFI connection is successful.



Current Adjustment (you can't adjust the current during charging): Click Set Current on the charging page to enter the current setting page, select the desired current level, click Confirm to confirm the setting, and then insert the charging gun into the charging port to start charging.



### WARRANTY& CUSTOMER SUPPORT

If you need help with product issues, after-sales service or other related issues, please contact us via the order number.

\*Note: Products purchased directly from us will enjoy our after-sales service. If purchased from other sales teams, we recommend that you contact them to resolve warranty issues.

Jiyanzhizao (Dongguan) Technology Co., LTD  
Factory: Building 1, No.4 Riverside Road, Tangxia Town, Dongguan City, Guangdong Province, China



便携式新能源汽车交流充电桩用说明书尺寸：147x210mm 材质：157g双铜 装钉方式：骑马钉（2颗钉子）

**FCC Warning:**

This equipment has been tested and found to comply with the limits for a Class B digital device, pursuant to part 15 of the FCC Rules. These limits are designed to provide reasonable protection against harmful interference in a residential installation. This equipment generates, uses and can radiate radio frequency energy and, if not installed and used in accordance with the instructions, may cause harmful interference to radio communications. However, there is no guarantee that interference will not occur in a particular installation. If this equipment does cause harmful interference to radio or television reception, which can be determined by turning the equipment off and on, the user is encouraged to try to correct the interference by one or more of the following measures:

- Reorient or relocate the receiving antenna.
- Increase the separation between the equipment and receiver.
- Connect the equipment into an outlet on a circuit different from that to which the receiver is connected.
- Consult the dealer or an experienced radio/TV technician for help.

**Caution:** Any changes or modifications to this device not explicitly approved by manufacturer could void your authority to operate this equipment.

This device complies with part 15 of the FCC Rules. Operation is subject to the following two conditions:

(1) This device may not cause harmful interference, and (2) this device must accept any interference received, including interference that may cause undesired operation.

This equipment complies with FCC radiation exposure limits set forth for an uncontrolled environment. This equipment should be installed and operated with minimum distance 20cm between the radiator and your body.