

klarta

Evaporative Air Humidifier

MODEL: HUMEA WiFi



User Manual

klarta

Technical Specifications

Model	Klarta HUMEA
Adaptor input	100-240V~, 50/60Hz, 0.5A
Adaptor output	12V DC, 1.0A
The humidifier input	12V DC, 0.6A
Operating range	5-40°C and 20-80% humidity
Humidistat, adjustable	40-75%
Humidification efficiency	100-300 ml/hour±20%(30%RH, 21°C)
Water tank capacity	3 liters
Airflow power	4 modes (low, medium, high, turbo)
Noise level	(24-52)±3 dB
Room size	Max. 134 ft²
Dimensions	9.02in x 9.02in x 14.29in
Weight	5.07 lb

TO REDUCE THE RISK OF FIRE AND ELECTRIC SHOCK OR PERSONAL INJURY WHEN USING ELECTRICAL APPLIANCES, YOU SHOULD ALWAYS FOLLOW BASIC MEASURES PRECAUTIONS, INCLUDING THE FOLLOWING:

General safety guidelines:

- Before using the device, please read this entire user manual carefully. Please keep this manual in a safe place in case you need to refer to its content in the future.
- This air humidifier is intended for home use; do not use it for commercial or industrial purposes.

- After removing the packaging, check the device for damage or evidence that may indicate a defect/failure. If in doubt, refrain from using the device and contact the supplier to proceed with inspection/repair.
- Keep the package away from small children, as it may be a danger to them!
- The humidifier should always be placed in a vertical position on a solid, flat, stable, and horizontal surface (i.e. never on a bed, sofa, thick carpet, etc.). Do not leave the device on a wooden floor for a long time; moisture can penetrate the wood and cause distortion! For the same reason, you shouldn't direct the outlets of the moisture management system toward the furniture or items that should be handled with care.
- Access to the power source and, for best results, keep a distance of at least 10 cm from walls, large furniture, etc. Make sure the air inlet is not directly facing a wall or other large object. Do not place the humidifier near heat sources such as (gas) boilers, radiators, microwave ovens, hot plates, open fires, etc.
- Only use original supplied power adaptor.
- Please ensure prior to start-up operation that the voltage information corresponds to the local mains voltage.
- The power plug must be connected in such a way as to avoid risks if the humidifier is tipped over or liquid is spilled.
- Do not operate the device if the power plug or power cord is defective.
- Do not use the humidifier near heaters, fireplaces, or gas-powered devices.
- The electric cable has a safe length. If necessary, you can use an extension cord with a power rating at least equal to that of the humidifier. Make sure that the electric cable is not exposed to high temperatures; keep it away from boilers, radiators, etc., and do not run it under carpets, etc., or in passageways. This could cause tripping and unintentional repositioning of the position of the humidifier. Prevent the cable from twisting and keep it out of the reach of children, animals, etc.

- Before connecting the humidifier, check that the data on the nameplate corresponds to the mains power supply and the technical data of the socket to which the humidifier is to be connected. Use only approved sockets with a 30 mA ground fault circuit interrupter.
- If the electrical socket used to power the humidifier is not properly connected, the plug of the appliance will get hot. Make sure that the humidifier is powered from a properly connected socket.
- The plug of the power cable must be connected in such a way as to avoid danger if the humidifier is knocked over or spills.
- Do not add water through the air outlets on the top side of humidifier.
- Bacteria and mould can form on the wick filter if the humidifier is not used for a longer time. Inspect the wick filter before using humidifier again. The wick filter should be changed if it has stains.
- Clean the water basin and wick filter every week to ensure optimum hygiene.
- Fill the water basin only with water.
- Do not stand on the device.
- NEVER tilt, move, or attempt to empty unit while it is operating.
- The device should be used in accordance with its intended purpose (i.e. for air humidification) and in accordance with the guidelines in the manual. You should never experiment with alternative uses of the air humidifier – regardless of its effectiveness – and make any changes to it. Any changes made to the humidifier and/or non-standard use of the humidifier will make the warranty null and void and release the manufacturer or importer from any liability.
- Please keep the humidifier clean and make sure that the inlet and outlet openings of the device (inner, side, and top) are not blocked. Never cover the humidifier with anything! Do not place any objects on the humidifier. Do not sit or stand on the device.

- Please make sure the device is under close supervision if used in the presence of children, disabled people, or pets. The device can be used by children over the age of 8 and people with limited physical, sensory, and intellectual abilities, or lacking the necessary experience and knowledge – if they are supervised, or given instructions on the safe use of the device and the associated dangers. Cleaning and maintenance of the device must not be carried out by unsupervised children. Children should not play with the device.
- Shut off and unplug before removing the upper housing and moving the unit. DO NOT attempt to repair or adjust any electrical or mechanical functions on this unit.
- Doing so will void your warranty. The inside of the unit contains no user serviceable parts.
- All servicing should be performed by qualified personnel only.
- You should turn off the humidifier and unplug it from the socket before:
 - Removing the water tank from the device, in order to refill it
 - Removing the top of the device
 - Cleaning and maintenance
 - Moving the device (be sure to empty the water tank first)
- Never pour water through the vents/outlet air (upper part of the housing); Otherwise, the device may be damaged!
- Fill the water tank with water only. Please make sure that the water in the tank is clean and clear, and its temperature does not exceed 40°C. Use only cold water (tap water, distilled water, mineral water, or other types of drinking water). DO NOT add any substances (soap, fragrances, cleaning products, medical products, or other substances) to the water in the tank; they may damage the device!
- Do not drink the water in the tank or use it to water animals or plants. Water from the tank should be poured down the drain.
- NEVER use detergents, gasoline, glass cleaner, furniture polish, and paint thinner, or other household solvents to clean any part of the humidifier.

- Never place housing under water flow or immerse in liquids.
- If the temperature in the room where the humidifier is located drops below 0°C, completely dry the device to avoid freezing.
- Use only the original humidifier filter supplied by the manufacturer, which is specifically tailored for this humidifier.
- If the humidifier is not used for a long time, filter bacteria and mold may begin to grow in the humidifier. In this case, the filter should be checked before re-use humidifier. If spots appear on the filter, it should be replaced.
- To ensure optimal hygiene levels, clean the water tank and humidifier filter weekly.
- Do not expose the device to direct sunlight or hot air.
- Never move a working humidifier. When the device is in use, do not tip it over, move it or empty it.
- Please make sure there is no risk of any falling objects inside the device. This could cause electric shock, fire, burns, or damage device itself.
- Do not spray flammable materials near the device, e.g. pesticides or perfumes.
- Do not use the humidifier after using aerosols for protection against insects in places where oil residues, chemical fumes or burning incense are present.
- When inserting the plug into the socket, make sure that your hands are dry; Wet hands may cause electric shock. Never immerse the plug, cable, or any other part of the humidifier in water!
- Do not use strong cleaning agents or abrasive cleaners, benzene, glass cleaners, furniture polishes, thinners, or any other cleaning agents for household use to clean any part of the humidifier. This may damage them!

- To turn off the humidifier, use the switch located on the device, and then remove the plug from the socket. This should not be done by pulling the cable; always remove the plug from the socket by grabbing it with your hand. Never leave the humidifier unused while plugged in.
- Always check that conditions are safe before using the device.
- Do not operate the humidifier if the cable is damaged, if the device is not working properly, or if the humidifier has been knocked over and suffered any damage. In case of problems with functioning, breakdown, or malfunction, immediately turn off the device, unplug it from the socket, and consult your supplier or an authorized service point for repairs or control. If repairs are necessary, request the use of only original parts.
- Never open the humidifier yourself, or undertake to repair the device or make any changes to its design (this also includes the cable and plug). This will void the warranty, and the manufacturer, importer, and supplier will not bear any responsibility if the user modifies the device! The device does not contain any internal parts that require maintenance by the user (except the replacement filter); any servicing should be left to qualified staff!

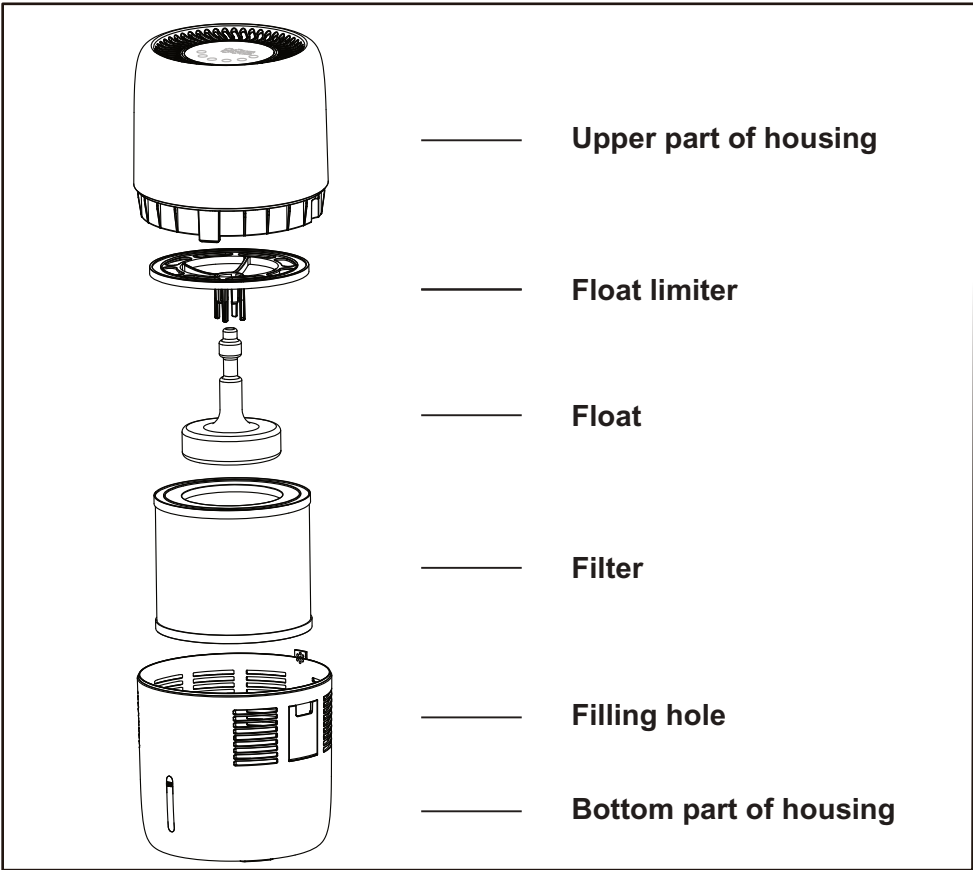
Attention:

The area in which the device effectively moisturizes to a preset level depends on humidity, temperature, and the amount of air exchange (ventilation), type of heating, and weather conditions outdoors, and may be smaller than the recommended use area.

Attention:

If water vapor condenses on the windows, walls, etc., turn off the humidifier. The humidity level in the room is then sufficient, and continuing to moisturize could lead to damage!

Attention! Never block the air inlet or outlet!



Installation and connection:

All packaging materials must be removed.

Check the device for damage. If there is any doubt, do not use the device!

Make sure the power cord plug is plugged into the socket.

The humidifier should be placed vertically on a solid, flat, waterproof, and horizontal surface, at least 10 cm from the wall. Never place the device on a bed or sofa. We recommend not placing the device on valuable furniture.

To ensure optimal performance of your device, make sure that air inlets and outlets are not covered.

Be sure to remove the upper casing from the lower casing.

All packaging materials must be removed.

Carefully fill the water tank with a maximum of 3 liters of water through the filling hole. Check the level indicator and never fill the tank above the "maximum" mark on the gauge. If too much water is poured into the tank, it will flow out through the holes, which may cause damage. After filling the tank with water, close the filling hole.



Attention! It is forbidden to add water through the holes inlet/outlet of the upper part of the housing.

Then place the upper case back on the lower case and make sure it is inserted correctly and place the plug in the socket. The device is ready for use.

Description of the control panel

A. ON/OFF button

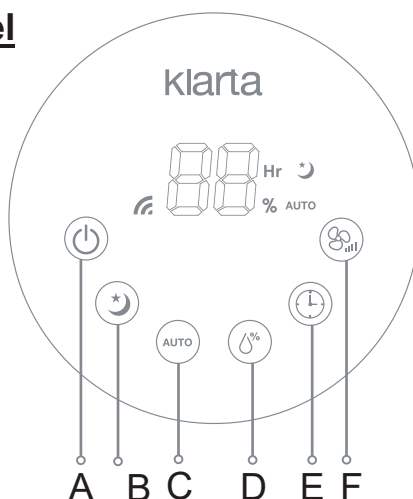
B. Light/Sleep Mode button

C. Auto button (hold to connect with Wi-Fi/App)

D. Humidity level setting button

E. Sleep timer button

F. Airflow power button



ON/OFF button

Pressing the ON/OFF button turns the device on or off. When the device is turned on, the display will show the current percentage of humidity, the airflow will be set to "medium" and the device will humidify continuously (that is, without setting the target humidity percentage).

Light/Sleep Mode button

Using this button you can adjust the brightness of the control panel, and the device can enable or disable sleep mode.

Each subsequent press of the button gives access to the following functions:

Position 1 - Dim light

Position 2 - Normal light

Position 3 - Strong light

Position 4 - Starting sleep mode. The corresponding symbol lights up. In sleep mode, the airflow power is automatically set to 1 (low), and the control panel light is turned off. In the sleep mode, the button that allows you to set the humidity level cannot be used.

All other buttons can be used. If the AUTO button is pressed, sleep mode will be disabled.

Position 5 - Turn off sleep mode. The corresponding symbol will turn off. The device will return to the default settings: airflow 2 and humidification continuously (i.e. – without setting the percentage of target humidity).

AUTO button

If the AUTO button is pressed, the device will keep humidity at an ideal level of 50%. (That is, the device if the humidity in the room will exceeds 50% will switch to very slow rotation).

Humidity level button settings/Hygrostat

This button is used to set the desired humidity level. The display shows the set humidity level for a few seconds, and then – the currently measured humidity level. Level humidity can be set between 40% and 75%.

As soon as the desired humidity level is reached, the device will switch to a very slow speed. When the humidity drops below the set value, the device will return to normal speed again.

After selecting "CO" (continuously), the device will work in a constant mode, i.e. without interruption.

Sleep timer button

Press the Sleep Timer button to set the desired operating time. Press the button several times to set the desired value number of hours (1-12 hours). The display shows the remaining time.

Airflow power button

This button is used to set the desired airflow power:

1 – Low, 2 – Medium, 3 – High, 4 – Turbo

Low water level

The display shows two flashing lines when the water level in the tank is too low. The fan will continue to rotate for a few more hours to dry the device and then automatically stop.

In normal operation mode, the fan will still run in position 2 for 7 hours (2 flashing lines) to dry the device. In sleep mode, the fan will run in position 1 for 10 more hours (2 lines constantly lit) to dry the device. The display will continue showing flashing lines while the fan is drying the device.

Filter service life

Depending on the hardness of the water used and the intensity of use, the filter life is from 3 to 6 months. When the filters are used up, on the display the letters FR will appear and the device will stop working. After replacing the filter, you should reset the counter.

To reset the built-in hour counter, press and hold the ON/OFF button for 3 seconds until the beep is heard.

Condensation on the windows and walls means that the humidity level in the room is already sufficient. In this case, you should turn off the device and remove the plug from the socket.

To control the humidifier using your phone (applies to the WiFi version) follow these steps:

1. Download the SMART LIFE - SMART LIVING application
2. Register in the application: enter your phone number or e-mail address, accept the privacy policy, and enter the registration code received back
3. Set a password for the application
4. Connect the app and your phone to your WiFi network
5. Start the humidifier in pairing mode with your phone: turn on the humidifier, then hold down the AUTO button on the humidifier until the WiFi icon starts flashing quickly
6. Click Add device to application and then select AUTO SCAN

7. The process of pairing the application with the device begins
8. After successful pairing, the device is ready for control using the application

Preservation and storage

To prevent breakdowns, keep the device clean. Lack of care for hygiene may lead to the multiplication of microorganisms in the water.

Daily maintenance of the humidifier and filter

Maintenance Guidelines

Before servicing the device, make sure the device is turned off, and the plug is removed from the socket or extension cord. Remove the top of the humidifier housing and remove the filter and float.

1. Change the water in the humidifier every day, use tap water without any additives.
2. Every 1-2 days, wash the water tank with warm water (water temp up to 30°C) and a soft cloth/sponge.
3. Clean the humidifier filter every day by rinsing it in running water.
4. If you will not be using the device for more than 2 days, make sure that there is no water left in the water tank and the filter is dry. Leaving a filter soaked in water with the device switched off may result in the growth of bacteria and mold.
5. If you plan not to use the device for a long time, clean it and dry all humidifier components, and store it in a dry place.

Periodic advanced maintenance of the humidifier and the filter

1. Wash the water tank once a week using warm water and mild detergent (water temperature up to 30°C) and a soft cloth/sponge, after cleaning rinse the container with plenty of water.
2. If scale or other deposits are present, to remove them from the tank and filter, use the solution of water (water temperature should not exceed 60°C) and vinegar in a ratio of 1:1 and a soft cloth/sponge for cleaning.

3. Depending on the amount of scale, soak the filter for 8 up to 20 minutes in the solution, then rinse under running water.

NOTE: slight fading of the filter color may occur.

4. Dry the water tank and filter.

Maintenance warnings

- Make sure the upper housing is never submerged in water.
- Do not use solvents or strong cleaning products for cleaning.
- The internal elements should be cleaned with a soft cloth; harder materials may damage the device!
- Never leave water in the water tank or housing for more than a few days. It needs to be replaced/removed; rinse the tank and allow the humidifier to dry if do not plan to use the device in the near future.
- The device is not intended for aromatherapy and do not add essential oils or fragrance oils, this may cause the humidifier to break down.

Transport

WARNING!

Always turn off the device before transport. Always unplug the device from the power socket. The device should only be transported when empty.

Storing the humidifier

Please clean the humidifier according to the instructions above. You should leave it to dry completely.

We recommend cleaning the humidifier thoroughly before storing the device for a longer period of time. Please make sure all parts are clean and dry before storing the device for a long time. DO NOT leave water in the lower part of the housing. Water left in the humidifier can cause mineral deposits and encourage the multiplication of unwanted microorganisms.

The device should be stored in its original packaging, if available.

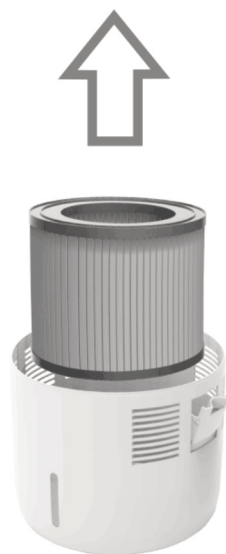
It should be stored in a cool, dry place.

Avoid exposing it to high temperatures!

Filter replacement

Only use the original filter

1. Turn off the device and remove the plug from the socket.
2. Remove the upper (main) part of the humidifier from the bottom part (water tank).
3. Remove the old filter and then insert a new one.
4. Replace the upper (main) element on the lower part (water tank). Make sure that both parts of the housing are properly fitted.
5. To reset the built-in hour counter, press and hold the ON/OFF button by 3 seconds until the beep is heard.



Problem solving

If the humidifier is not working properly, it should be checked for the following:

Problem	Possible cause:	Solution:
Device doesn't work.	Control button in OFF position.	Turn on the device.
	No power supply.	Plug in to contact.
	Is the water tank filled sufficiently and has the top piece of the housing been properly aligned with its bottom piece?	Fill the water tank and correctly place the main body on the lower part of the case. Are there any problems with the power supply?
From the device comes out unpleasant smell.	Water is dirty or has been in the unit too long.	The water should be replaced and the tank should be cleaned.
Humidity level changes little or nothing at all.	The filter level has been installed incorrectly.	Install the filter correctly.
	The filter is dirty.	Clean or replace the filter.
	The room is too large for the device.	Check that the dimensions of the room correspond to the recommended dimensions.

If the problem was not solved using the above advice, please consult your supplier or an authorized service point.

You should never attempt to carry out repairs on your own! This will void the warranty, and the supplier, manufacturer, or importer will not be held liable in any way.

Recycling

INSTRUCTIONS FOR HANDLING USED ELECTRICAL AND ELECTRONIC EQUIPMENT



This symbol placed on the product indicates the need to selectively collect waste electrical and electronic equipment. This means that, under penalty of a fine, such products and waste arising from them cannot be thrown away in regular garbage (e.g. from the household) together with other waste.

According to the WEEE Directive (WEEE Directive 2012/19/EU), waste arising from waste electrical and electronic equipment requires a special form of waste processing, in particular recovery, recycling, or disposal. Such products should be returned to a point of collection of used electronic equipment or to a point of purchase.

Caution: The user is cautioned that changes or modifications not expressly approved by the party responsible for compliance could void the user's authority to operate the equipment.

This device complies with Part 15 of the FCC Rules. Operation is subject to the following two conditions: (1) this device may not cause harmful interference, and (2) this device must accept any interference received, including interference that may cause undesired operation.

NOTE: This equipment has been tested and found to comply with the limits for a Class B digital device, pursuant to Part 15 of the FCC Rules. These limits are designed to provide reasonable protection against harmful interference in a residential installation. This equipment generates, uses and can radiate radio frequency energy and, if not installed and used in

accordance with the instructions, may cause harmful interference to radio communications. However, there is no guarantee that interference will not occur in a particular installation.

If this equipment does cause harmful interference to radio or television reception, which can be determined by turning the equipment off and on, the user is encouraged to try to correct the interference by one or more of the following measures:

- Reorient or relocate the receiving antenna.
- Increase the separation between the equipment and receiver.
- Connect the equipment into an outlet on a circuit different from that to which the receiver is connected.
- Consult the dealer or an experienced radio/TV technician for help.

FCC Radiation Exposure Statement

This equipment complies with FCC radiation exposure limits set forth for an uncontrolled environment. This equipment should be installed and operated with a minimum distance of 20cm between the radiator and your body.

This transmitter must not be co-located or operating in conjunction with any other antenna or transmitter.

Importer

Klarta Poland company with limited liability limited partnership
ul. Mickiewicza 37/58
01-625 Warsaw

support@klarta.com

