

3D Moravian Star Led Light Manual

Contents

3D Moravian Star Led Light Manual.....	1
Attentions	3
Introduction.....	4
Part I: How to Install the Light.....	5
1. Upfold the Moravian Star.....	5
2. Fold the Star and Fasten Firmly.....	6

3. A Star Tree Topper or a Hanging Star	7
4. Assemble the Tripod	8
5. Mount the Tripod on a Christmas Tree	9
6. Fasten the Tripod by Reusable Zip Ties	10
7. Mount the Star on the Tripod.....	11
 Part II: How to Control the Light	 12
How to Use the Remote Control	12
How to Use the APP.....	18
 FCC Warnings	 37
 Customer Service	 39

Attentions

This is an electronic decoration that follows the rules of general electronics use. To avoid risks of fire and electric shocks and guarantee the best user experience, please:

- Turn off the power before installation.
- Ensure that the wires are reasonably placed before energizing.
- Do not mount or support strings in a manner that can cut or damage wire insulation.
- Do not store this product near heat or open flames.
- Turn off when not in use.
- Do not use the power cable to suspend other heavy loads.
- Do not use it in extreme weather.

- Prepare 2 AAA batteries if you want to use the remote control

Introduction

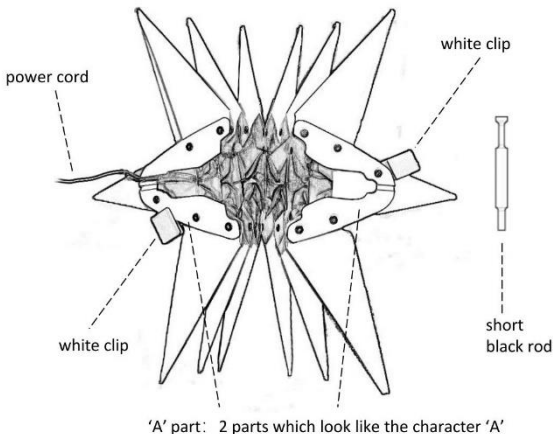
The Moravian Star has been a traditional decoration during Advent and Christmas for centuries. It symbolizes the star that led the Wise Men from the Far East to Bethlehem, where they presented gifts to the baby Jesus.

This fold-able star can be stretched out into a 3D Moravian star, which has many colorful shining modes. It can be used as a holiday decoration for Christmas trees, doors, living rooms, courtyards, porches, etc.

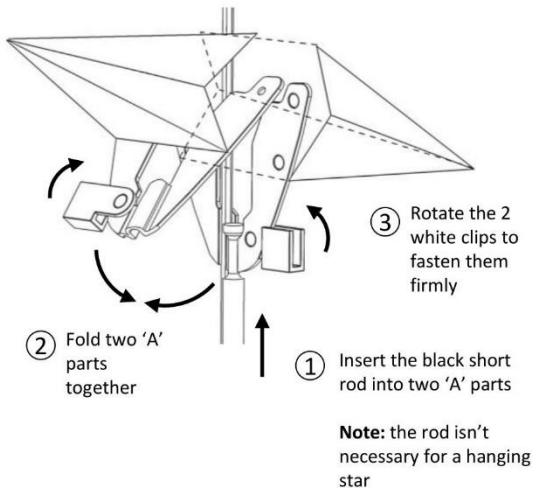
The shining lights of the star can be controlled by the remote control or the APP provided by us.

Part I: How to Install the Light

1. Upfold the Moravian Star

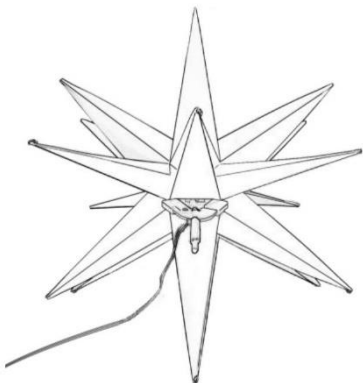


2. Fold the Star and Fasten Firmly



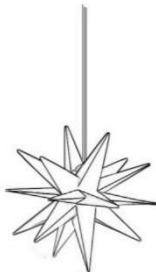
3. A Star Tree Topper or a Hanging Star

Here is a complete Moravian star.

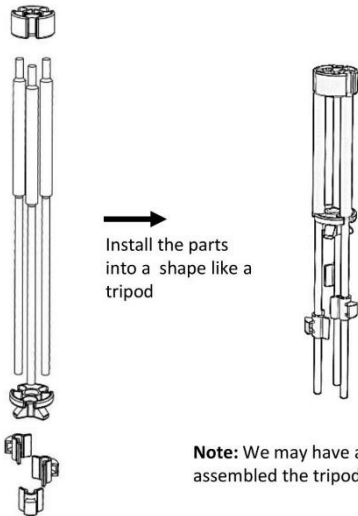


Note: the rod isn't necessary for a hanging star.

- ① To use it as a star tree topper, please continue with the steps on the following pages;
- ② To hang the star under the roof or somewhere, just use the power cord as a hanging rope.



4. Assemble the Tripod



5. Mount the Tripod on a Christmas Tree

①

Find the trunk of the tree.

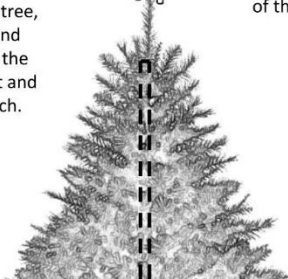
Note: for an artificial Christmas tree, there is usually a metal trunk inside; for a natural tree, you should find the trunk, or the most straight and reliable branch.



②



Mount the tripod on the trunk. The trunk is embraced by 3 legs of the tripod.



6. Fasten the Tripod by Reusable Zip Ties

①

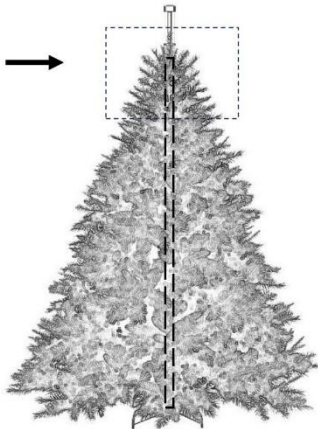
Thread the 3
reusable zip ties
through the holes
in the tripod

3 x

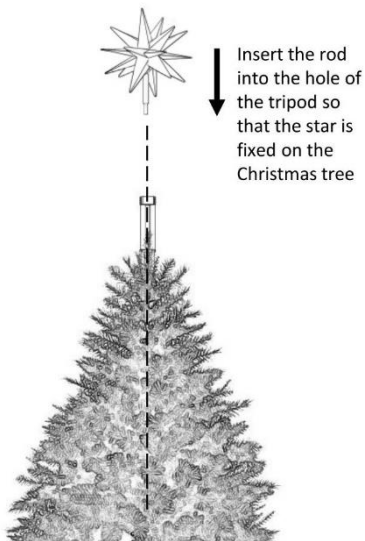


②

Use the zip ties to fasten the tripod legs
and the trunk together



7. Mount the Star on the Tripod



Finish it! Let's light it up!

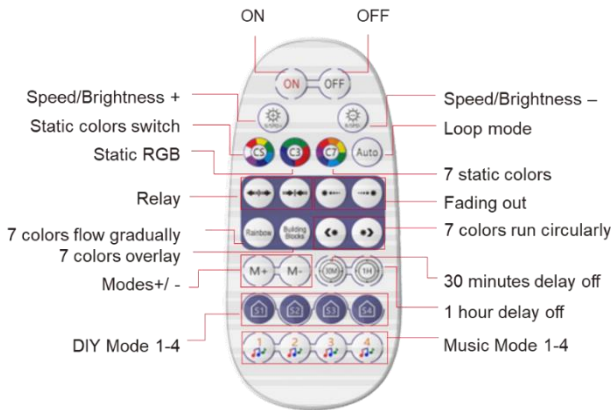
Part II: How to Control the Light

How to Use the Remote Control

① Introduction






The smart remote control with 28 buttons provides abundant options to control the shining lights of the star. It provides a convenient method to control the star besides the APP.

② Functions of Buttons



③ Detailed Explanation of the Buttons

	<p>Static colors switch</p>	<p>7 static colors switch: Red, yellow, green, light blue, dark blue, purple, white</p>
	<p>Static RGB</p>	<p>3 static colors switch: Red, Green, Blue</p>
	<p>7 static colors</p>	<p>7 static colors switch: Red, yellow, green, light blue, dark blue, purple, orange</p>
	<p>Relay</p>	<p>From the middle to both side / from both side to the middle</p>
	<p>Fading out</p>	<p>From left to right / from right to left</p>

	7 colors run circularly	From right to left / from left to right
	Loop mode	Built-in mode switch
	Modes+/-	Built-in mode+/- Built-in mode -
	DIY Mode 1-4	Hold down for two seconds to record the current mode, and short press to trigger the recorded mode next time.
	Musical Mode 1-4	4 different lighting effect which changes with the rhythm of external music: jumping/ breathing/ Strobing/ running Water

④ Remote Control Code Matching

Remote Control Model Number	ZRRE1-28
Domination Principle	RF 2.4G
APP	Magic Home Pro
Operation Platform	Android 4.4 or IOS 9.0 or higher
Input Voltage	3V (2*AAA Batteries)
Power Consumption	standby<2.3mA; transmitting: <5.4mA; working: <4.7mA
Language	English, Japanese, German
Working Temperature	-20- +45°C
Dimension (L* B* H)	105mm * 47mm * 13mm

Net Weight	26.7g
Control Distance	Visible distance 40m

- 1) Code matching: power on the device, hold down the "ON" key for 5 seconds, and the device flashes slowly to indicate successful code matching.
- 2) Remote code clearing: power on the device, hold down "OFF" key for 5 seconds, the device flashes quickly to indicate successful clearing.
- 3) Scene mode can only record one custom color.

⑤ Product Parameter

How to Use the APP

① Download and Install the APP

Download "Surplife" APP from Apple store and Google play store, or scan the QR code.



Surplife APP



The following pictures show how to download after scanning. Please open with a browser.

Android



SurLife

Google Play store

[Download APK](#)



Click on the top right corner
Open with a browser



SurLife

Google Play store

[Download APK](#)

ios



SurLife
Lifestyle

5 RATINGS

5.0
★★★★★

AGE

4+

CATEGORY

Lifestyle

DEVICE

iPhone

What's New

Version 1.2.2

Version History

2w ago

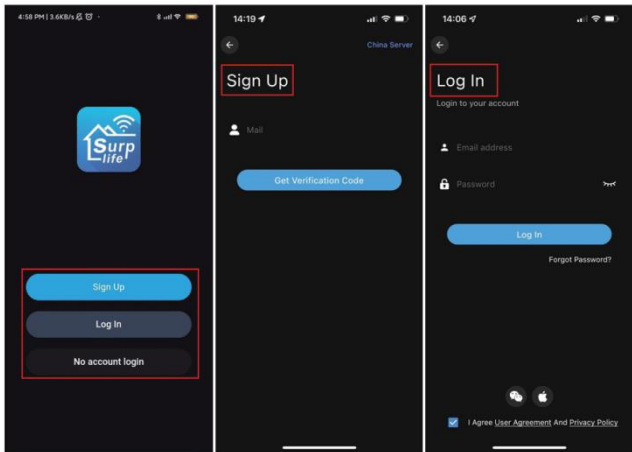
1. Compatible with new device type: CCT+RGB color-changing ceiling light.
2. Intelligent "custom plan", adding specific: [more](#)

Preview

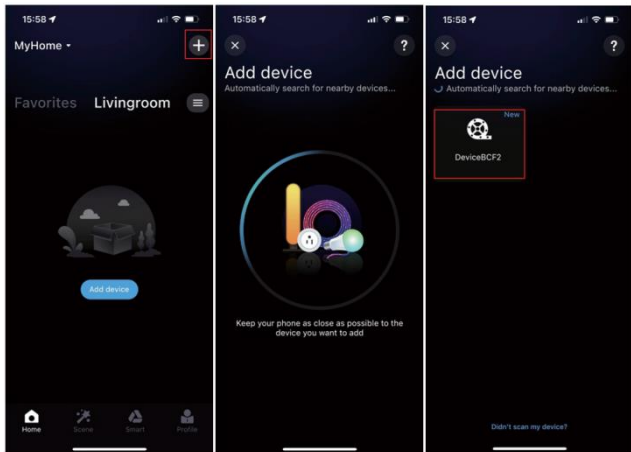


② Connect the Device

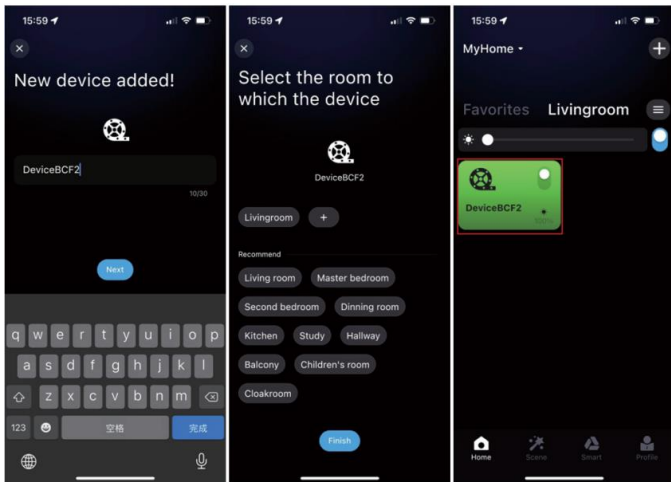
1) Register/Login your Surlife account. It can be used without login.



- 2) Turn on the device and enable your phone's Bluetooth.
- 3) Enter "Surplife" app, tap "add device" or click "+" to add the device.

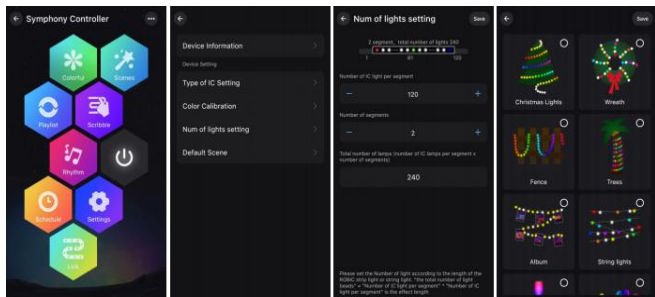


4) Rename the device and select a room for it.



In the setting interface, you can set the IC model, color correction, number of points (Total number of points cannot exceed 300 in each segment and total LED chips quantity cannot exceed 2048).

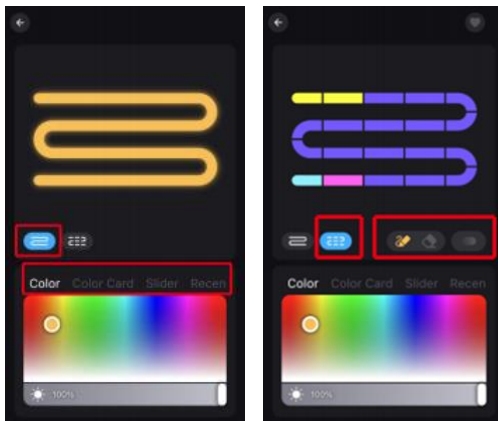
The setting of IC number is applied to the smearing function.



③ Colorful Mode

The color of the light can be adjusted by the whole and each segment. App provides different columns for color selection or editing, and the brightness can also be adjusted. In the segmentation interface, users can freely smear or erase

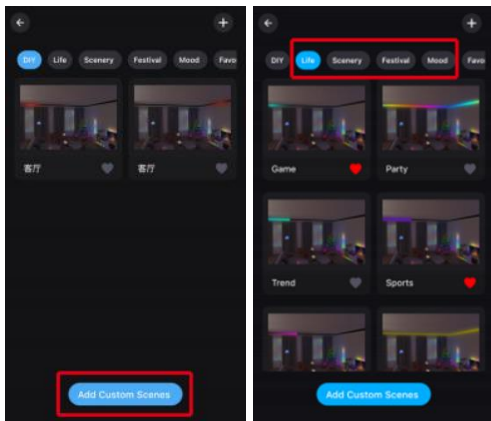
the color of each segment, and also set the gradient effect.



④ Scenes Mode

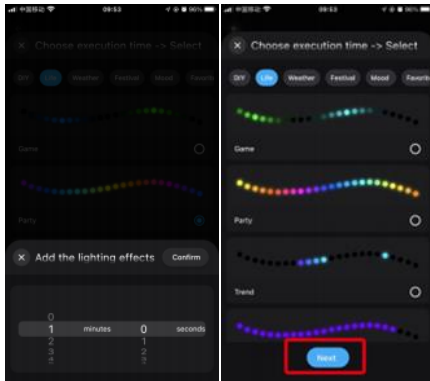
There are 4 built-in scenes: "Life", "Scenery", "Festivals", "Mood". And

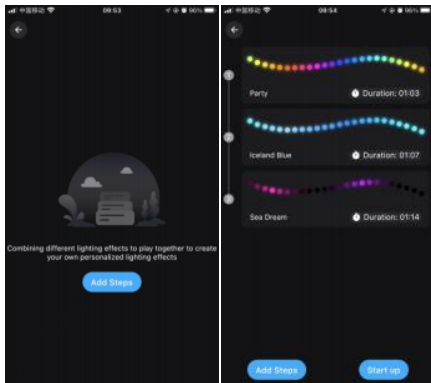
you can click “DIY” or “Collection” to create your favorite light effects.



⑤ Playlist Mode

Multiple built-in light dynamic modes are included, and you can set the time of lighting effects and enter cycle mode. Select different scene modes, then set the duration of each scene respectively, and play it by combining the sequence of different lighting effects.





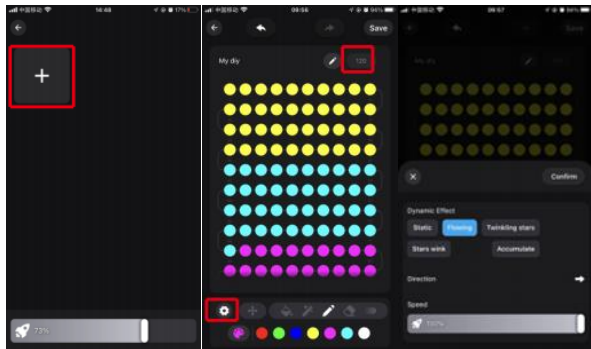
⑥ Scribble Mode

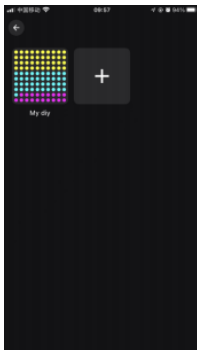
Click "+" to DIY the lighting color and dynamic effects then save it.

Before DIY, please set the number of IC in "Settings" to ensure that the number of lights is consistent with the device, Otherwise, the lighting

effect is incorrect.

Before customize, please ensure that the IC number in app setting is the same as the light device, otherwise, the lighting effect will be incorrect.



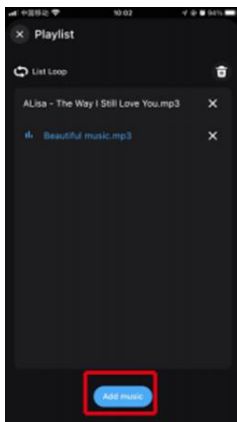


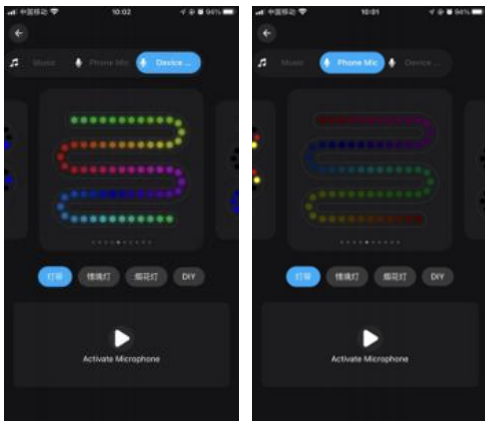
⑦ Rhythm Mode

The light can synchronize the lighting with the music rhythm. There are two ways to input the audio signal on the controller: built-in APP microphone and external microphone (for sound control version). Click "Add Music" > Import a music file or import it from the built-in

music library.

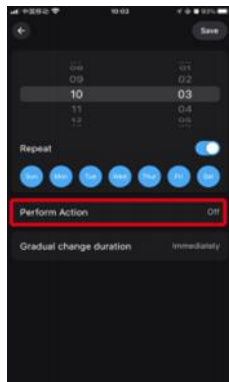
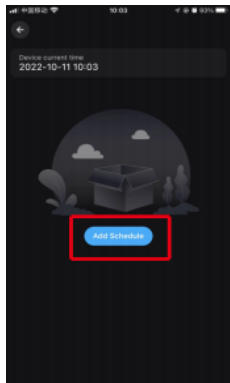
The lights color will change with the sound rhythm when your phone microphone catches the sound. The microphone sensitivity can be adjusted by the slider.

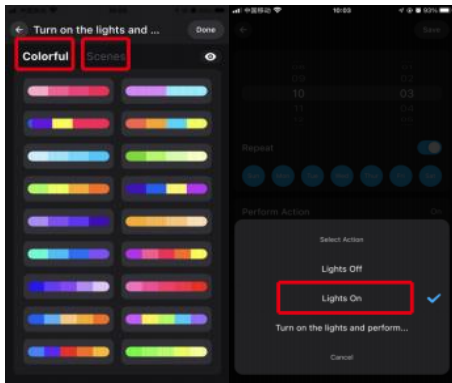




⑧ Schedule Mode

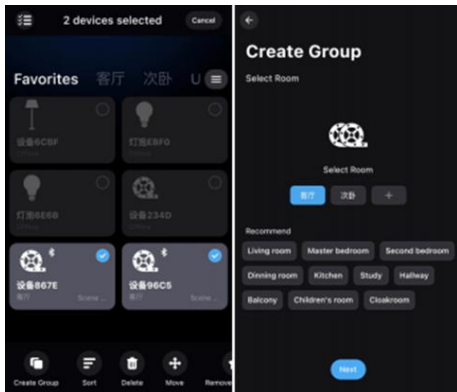
Smart lights automatically come on and off at given times through the timer function, choose your favorite effect and color then save it.

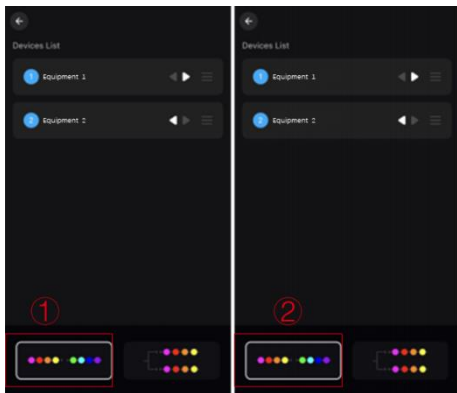




⑨ Link Mode

This mode allows you to create different groups to control more than one controller at the same time.





Setting a group for the strip lights, enjoy the linkage lighting effect. Hold and drag the device on the list to change the order and the direction.

- ① The grouped light strips synchronized Linkage.
- ② The grouped light strips change sequentially.

FCC Warnings

This device complies with part 15 of the FCC Rules. Operation is subject to the following two conditions: (1) this device may not cause harmful interference, and (2) this device must accept any interference received, including interference that may cause undesired operation. Any changes or modifications not expressly approved by the party responsible for compliance could void the user's authority to operate the equipment.

NOTE: This equipment has been tested and found to comply with the limits for a Class B digital device, pursuant to Part 15 of the FCC Rules. These limits are designed to provide reasonable protection against harmful interference in a residential installation. This equipment generates, uses and can radiate radio frequency energy and, if not

installed and used in accordance with the instructions, may cause harmful interference to radio communications.

However, there is no guarantee that interference will not occur in a particular installation. If this equipment does cause harmful interference to radio or television reception,

which can be determined by turning the equipment off and on, the user is encouraged to try to correct the interference by one or more of the following measures:

- Reorient or relocate the receiving antenna.
- Increase the separation between the equipment and receiver.
- Connect the equipment into an outlet on a circuit different from that to which the receiver is connected.
- Consult the dealer or an experienced radio/TV technician for help.

To maintain compliance with FCC's RF Exposure guidelines, This equipment should be installed and operated with minimum 20cm

distance between the radiator and your body: Use only the supplied antenna.

Customer Service

If you have any questions, please do not hesitate to contact us.

Contact us through the web page:

<https://angeltreetopper.com/contact-us/>



Brand	Cyraft
Contact Us	https://angeltreetopper.com/contact-us/
Update Date	2024/08/15