

43 mm

43 mm

43 mm

主动式电容笔 Active Stylus

产品概述 Product Overview



使用说明 Operation Instruction

1. 开机
双击尾帽触摸按键，指示灯亮蓝灯开始使用
1. Power on
Double click the tail cap touch button, used when blue LED indicator lights up.
2. 关机
双击尾帽触摸按键，立即关机
2. Power off
Double click the tail cap touch button to immediately shut down



3. 充电 连接USB type-C充电线充电

3. Charging
Connect the USB type-C cable to charge the stylus



4. 蓝牙连接 打开设备端蓝牙，搜索配对名为OCM Pen OPI27的电容笔，点连接

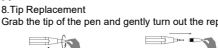
4. Bluetooth Connection
Click Bluetooth on the device side, search for the stylus named OCM Pen OPI27 and click 'connect'
5. 辅助功能(连接蓝牙条件下)
5. Accessibility features (Under Bluetooth connection conditions)
①Home键：任何使用状态下，长按尾帽触摸按键3S回到屏幕主页面；
①Home Key: In any state of use, long press the tail cap touch button for 3 seconds to return to the main interface
②橡皮擦功能：在绘画状态下，单击笔身按钮切换橡皮擦模式
②Eraser function: In painting mode, click the pen body button to switch the eraser erase mode



6. Findmy
长按笔身按钮5秒激活Findmy绑定操作，打开查找APP添加物品“支持其他物品”搜索“OCM PEN”连接进行绑定操作
6. Findmy function
Press and hold the pen button for 5 seconds to activate the Findmy binding operation. Open the search app and add the item "supports other items". Search for the "OCM PEN" link to perform the binding operation

7. 唤醒功能
开机状态下，静置5分钟自动休眠，拿起唤醒立即进入工作模式
7. ACC function
When turned on, it will automatically sleep after being left idle for 5 minutes. Pick up and wake up immediately to enter

8. 笔尖更换
握住笔尖并轻轻转动，将笔尖取下后，用同样的方式装入新的笔尖
8. Tip Replacement
Grab the tip of the pen and gently turn to the replace tip.



9. 磁吸 9. Magnetic Adsorption



iPad pro 11"/12.9"

产品参数

产品名称	主动式电容笔
型 号	OPI27
输 入	5V=1A
电池容量	125mAh
额定电压	3.7V
工作温度	0℃~40℃
充电时间	0.5小时
工作时间	>=10小时
适用型号	iPad Air 10.5寸（第三代） iPad mini 7.9寸（第五代） iPad 9.7寸（第6代） iPad 10.2寸（第7代） iPad Pro 11"/12.9寸（第3代） 备注：兼容2018款或2019以上iPad版本 &系统更新到12.2版本以上或最新才可以使用
包装清单	电容笔x1 充电线x1 替换笔尖x1 说明书x1

以上参数均来源于公司实验室，实际参数会因产品或者其他因素而有差异；图片仅供参考，请以实物为准

指示灯说明

使用状态	指示灯显示
连接蓝牙状态工作中	蓝色灯
未连接蓝牙状态工作中	绿色灯
电量<10%	红灯闪烁
充电中	红色灯
充满电	绿色灯

Product Parameter

Product Name	Active Stylus
Model Number	OPI27
Input	5V=1A
Battery Capacity	125mAh
Nominal Voltage	3.7V
Working Temperature	0℃~40℃
Charging Time	0.5H
Working Time	>=10Hours
Compatible With	iPad Air 10.5 inch (Gen 3) iPad mini 7.9 inch (Gen 5) iPad 9.7 inch (Gen 6) iPad 10.2 inch (Gen 7) iPad Pro 11"/12.9 inch (Gen 3) Notes: Compatible with iPad Launched in 2018 & 2019 or latest, together with iOS updated to higher than Rev 12.2
Packing List	Stylus x 1pcs Charging Cable x 1pcs Replacement Tip x 1pcs User Manual x 1pcs

All the above data and information comes from lab. They might vary with environment or other factors. Photos only for reference.

About Indicator

Working State	LED indicator
Bluetooth connection status is working	Blue light
Working without Bluetooth connection status	Green light
Battery Capacity<10%	Red light Blinking
Charging	Red light
Charging Completion	Green light

185 mm

注意事项

1. 切勿在屏幕以外的其他表面使用笔, 以免笔尖过度磨损导致损坏屏幕。
2. 使用时请保持笔尖干净, 因为灰尘或微粒可能会影响触控效果。
3. 使用过程中笔尖会逐渐磨损, 请及时更换替换笔尖以免损坏屏幕。
4. 请将笔放置在儿童或宠物接触不到的地方, 避免儿童或宠物误吞或导致其他伤害。
5. 笔内包含敏感电子元件 (含电池), 使用时请小心, 若不慎跌落、焚烧、弯曲、破坏性挤压或接触到液体, 可能会对其造成损坏或导致人身伤害。切勿使用已损坏的笔。
6. 请勿使用任何溶剂或者液体清洁产品, 以免清洁时溶剂或液体流入产品内部导致产品受潮或损坏内部元件。
7. 部分屏幕贴膜可能会影响书写体验。

电池警告

1. 请勿尝试自行更换电池, 因您可能会损坏电池, 或者由于不当的操作导致过热或造成人身伤害。
2. 充电时, 请勿用身体任何部位压住笔, 或者将笔放在枕头/被子下, 避免皮肤与笔长时间接触, 以免由于笔过热引起身体不适或受伤。
3. 禁止拆解、撞击、挤压或投入火中。如果出现严重膨胀, 请勿继续使用。请勿置于高温环境中。
4. 如果电池更换不当会有爆炸风险, 只能用同样类型或等效类型的电池更换。
5. 电池 (电池包或组合电池) 不得暴露在诸如日照、火烤或类似过热环境中。
6. 本产品内含锂电池, 请与家庭垃圾分类处理。

产品中有害物质的名称及含量

为满足中国电子产品有害物质限制相关的法律法规和其他要求, 对本产品中有毒物质, 按部分分类, 声明如下。

部件名称	有害 物质					
	铅 (Pb)	汞 (Hg)	镉 (Cd)	六价铬 (Cr(VI))	多溴联苯 (PBB)	多溴二苯醚 (PBDE)
金属件	○	○	○	○	○	○
其他	○	○	○	○	○	○

本表格依据SJ/T 11364的规定编制, 某些型号的产品可能不包含表中的部分部件。

0 表示该有害物质在该部件所有均质材料中的含量均在GB/T 26572规定的限量要求以下。

X 表示该有害物质至少在该部件的某一均质材料中的含量超出GB/T 26572规定的限量要求。标记“X”的部件, 皆因全球技术发展水平限制而无法实现有害物质的替代。

在中华人民共和国境内销售的信息电子产品必须标识此标志。圈面内的数字表示正常使用状态下产品的环保使用周期。

FCC Warning

This device complies with part 15 of the FCC Rules. Operation is subject to the following two conditions. (1) This device may not cause harmful interference, and (2) this device must accept any interference received, including interference that may cause undesired operation. Any changes or modifications not expressly approved by the party responsible for compliance could void the user's authority to operate the equipment.

Note: This equipment has been tested and found to comply with the limits for a Class B digital device pursuant to part 15 of the FCC Rules. These limits are designed to provide reasonable protection against harmful interference in a residential installation. This equipment generates uses and can radiate radio frequency energy and, if not installed and used in accordance with the instructions, may cause harmful interference to radio communications. However, there is no guarantee that interference will not occur in a particular installation. If this equipment does cause harmful interference to radio or television reception, which can be determined by turning the equipment off and on, the user is encouraged to try to correct the interference by one or more of the following measures:

- Reorient or relocate the receiving antenna.
 - Increase the separation between the equipment and receiver.
 - Connect the equipment into an outlet on a circuit different from that to which the receiver is connected.
 - Consult the dealer or an experienced radio/TV technician for help.
- The device has been evaluated to meet general RF exposure requirement. The device can be used in portable exposure condition without restriction.

Attention

1. Never use pen for writing on the other surface than tablet touch screen, to protect the tip, which might potentially damage touch screen
2. Keep stylus tip clean when you use it, because dust can affect the touch effect.
3. The pen tip will wear away in the process of use. Please change the pen tip in time to avoid damaging the screen.
4. Place the pen in a place where children or pets could not reach it.
5. The pen contains sensitive electronic elements (including batteries). Please be careful when using them. If you accidentally drop, overheat, be squeezed or touched with liquid, you may cause damage to the body. Do not use damaged pen.
6. Do not let the solvent or liquid flow into the product, which might cause product damage.
7. Touch screen protective film may affect the writing experience.

Battery warning

1. Do not try to replace the battery by yourself, because you may damage the battery due to improper operation resulting in overheating or causing injury to the cellar.
2. When charging, do not press stylus with any part of the body, or place the pen under the pillow / quilt, which may cause injury or product damage due to overheating of the pen.
3. It is forbidden to fold, squeeze or put the pen into the fire. Please do not put the pen in high temperature.
4. If the battery is not properly replaced, it will risk the explosion. It can only be replaced by the same type or equivalent type.
5. Batteries (battery packs or combination batteries) should not be exposed to sunlight or fire.
6. This product contains battery. Please separate it from the garbage.

Declaration of hazardous substances in products

In order to meet regulation & law requirements in China for hazardous substances control, we declare the substances as shown in the table:

Parts	Hazardous Substances					
	铅 (Pb)	汞 (Hg)	镉 (Cd)	六价铬 (Cr(VI))	多溴联苯 (PBB)	多溴二苯醚 (PBDE)
Metal	○	○	○	○	○	○
Others	○	○	○	○	○	○

This table is filled according to the regulations of SJ/T 11364 in China. Some model may not contain the parts in the table.

0 indicates that the substance meets the requirement of GB/T 26572.

X means the substance exceeds the requirement of GB/T 26572, because this hazardous substances can't be replaced due to limited global technology.

All the electronic products sold in China must identify the sign. The number in the circle indicates the duration of the product is environmentally friendly for usage.

执行标准:

Executive standard
GB 4943.1-2011 ; GB 31241-2014



保修卡 Warranty card

客户姓名: _____
Customer name

联系电话: _____
Contact telephone

产品名称: _____
Product name

购买日期: _____
purchase date

地址: _____
Address

备注: _____
Remarks

深圳市智诚立创技术有限公司
Shenzhen OCM Technology Ltd., Co

制造商: 深圳市智诚立创技术有限公司
Manufacturer: Shenzhen OCM Technology Ltd., Co

地址: 深圳市宝安区宝华路卓越时代广场A座1703
Address: Room 1703, Tower A, Times Square, Baohua Road, Baoan, Shenzhen, China

Web : <http://www.ocm-tech.com/>

Email : service@ocm-tech.com

深圳市智诚立创技术有限公司版权所有并保留一切权利
All Copyright owned by Shenzhen OCM Technology Co., Ltd.

中国制造

Made in China