

off and on the user is encouraged to try to correct the interference by one or more of the following measures:

- Reorient or relocate the receiving antenna.
- Increase the separation between the equipment and receiver.
- Connect the equipment to an outlet on a circuit different from that to which the receiver is connected.
- Consult the dealer or an experienced radio/TV technician for help.

Certification Information

FCC Regulations

This device complies with Part 15 of the FCC Rules. Operation is subject to the following two conditions:

- (1)This device may not cause harmful interference, and;
(2)This device must accept any interference received, including interference that may cause undesired operation.



RF Exposure Information(SAR):

The FCC's SAR limit is 1.6 W/kg. The maximum SAR value when tested for body use is 0.99 W/kg. Testing was conducted at 0 mm distance, and the device meets RF exposure requirements.

German TUV Rheinland Low Blue Light and Flicker-Free Double Certification

Utilizes low blue light filtering technology to effectively reduce harmful blue light in the 415nm-455nm wavelength range, minimizing visual fatigue. Equipped with DC dimming technology to ensure a flicker-free experience, avoiding both visible and invisible screen flickering at low brightness levels.

Eye Care Tips: Take a 10-minute break after using the device for 30 minutes. During the break, look into the distance to avoid eye fatigue.Develop the habit of doing regular eye exercises to prevent myopia.

Setting Method: Adjust in the eye care app

Disclaimer and Limitation of Liability

Think Academy and its suppliers shall not be responsible for any damage or loss resulting from the use of this handbook, except as required by applicable law. Think Academy and its suppliers disclaim any liability for any loss or claims by third parties that may arise from the use of this software. In no event shall Think Academy and its suppliers be liable for any indirect, special, incidental, or consequential damages arising out of or in connection with the use or performance of the product, even if they have been advised of the possibility of such damages. Please ensure to back up important data on other media to prevent data loss.

Guangdong Hengqin Xingtong Technology Co., Ltd.
Room 1306, No. 8 Yanghuan Road, Hengqin New District, Zhuhai City, Guangdong Province
Email: service@thethinkacademy.com

Quick Reference Guide



Thinkpal Tablet T100

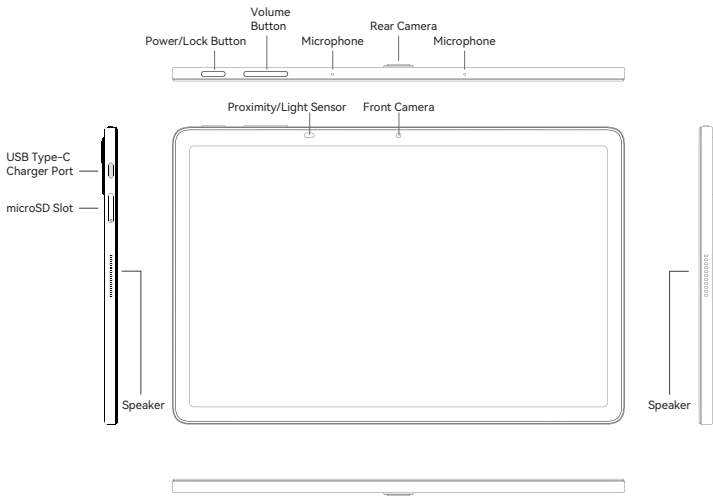
Introduction:

Thank you for purchasing the Thinkpal Tablet T100 with Android 14. Featuring a responsive octa-core processor, this tablet is perfect for daily learning, streaming music and movies, taking photos, checking emails, and engaging with social media. It offers Bluetooth connectivity and comes with 6GB of RAM and 128GB of ROM, as well as a memory card slot that supports up to 1TB of additional storage.

What You Should Know to Ensure Best Performance:

- Fully charge the battery before first use.
- Tablet performance may be affected when downloading updates in the background until the process is complete.
- Close unused apps, as open apps running in the background can affect overall performance.
- Battery consumption: Playback time for a fully charged battery will vary based on display settings, open apps, and internet usage (e.g., streaming video content).
- It is recommended to use a tablet case to protect the device.

About Your Tablet



In the Box

11" Tablet , Tablet Case, 18W USB Travel Charger, USB Type-C Cable,Memory Card Ejection Pin, Quick Reference Guide.

Note

Devices and software are constantly evolving-the screen images and icons you see here are for reference only.

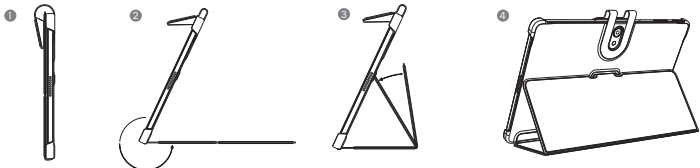
Safety Instructions

Refer to the safety information on the tablet before installing or operating the device.

- Do not install near any heat sources such as radiators, heat regulators, stoves, or other equipment that generate heat.
- The tablet is not moisture-proof or waterproof. Avoid using the tablet around water sources.
- Avoid using the tablet in extremely hot, cold, dusty, or humid environments.
- Disposing of the battery in a fire or hot oven, or mechanically crushing or cutting the battery, may result in an explosion.
- Leaving the battery in extremely hot surroundings, such as sunlight, fire, or hot surfaces, may result in an explosion or leakage of flammable liquid or gas.
- Avoid dropping or forcibly placing the tablet on a hard surface. This may damage the screen or internal electronics and void the warranty.
- The power plug should be kept in a state where it can be disconnected at any time to avoid emergencies.
- Use the device at an ambient temperature between 0° and +40°C (32° to 104°F). Store or transport the device at ambient temperatures between -10° and 45°C (14° to 113°F). Low or high temperature conditions may cause the device to change its behavior to regulate its temperature.
- Use only accessories specified or provided by the manufacturer (e.g., dedicated charger, batteries, etc.). Replacing with an incorrect battery type may compromise safety measures.
- Do not use the tablet while walking or driving.
- To prevent possible hearing damage, do not listen at high volumes for long periods of time.
- Do not suddenly disconnect the tablet when formatting, uploading, or downloading data. This can lead to program errors (e.g., system or screen "freezing").
- Electrostatic discharge is normal and can occur in electronic devices. Although it is not life-threatening, it can damage files or affect memory and its contents.
- This tablet is a unibody device, with a non-removable back cover and battery. Disassembling the tablet will void your warranty and can cause bodily injury if the battery is punctured.
- Do not open, dismantle, or attempt to repair your tablet yourself. Doing so will void the manufacturer's warranty.
- Tablet functionality, hardware, software, and warranty information may be improved or modified by the manufacturer or their respective owners and are subject to change without notice.

Tablet Case

Please refer to the steps in the figure below to use the tablet case for the support function. The support angle is approximately 65°±2°. The upper cover of the tablet case has a magnetic function that interacts with the screen. It supports automatic screen activation when opening the cover and screen deactivation when closing the cover.



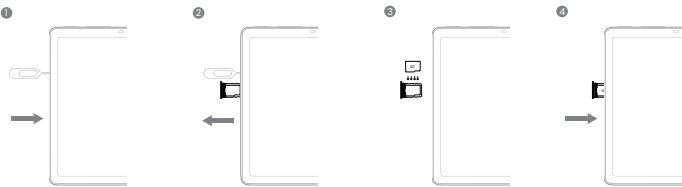
Travel Charger

Input:100-240V ~ 50/60Hz 0.5A
Output:5.0V---3.0A OR 9.0V---2.0A OR 12.0V---1.5A 18.0W MAX

Setting Up Your Tablet

Insert the microSD Card

- Step 1: Locate the ejector tool inside the tablet package and insert it into the small opening next to the microSD card holder.
- Step 2: Remove the microSD card tray.
- Step 3: Position the microSD card correctly in the tray, aligning the cutout tab, and gently snap it into place. Ensure the edges are properly aligned.
- Step 4: Slowly slide the tray back into the microSD card slot. It only fits in one direction. Do not force it into place. Keep the ejector tool in a safe place for future use.



NOTE: The microSD card is sold separately. This tablet will support microSD cards up to 1T capacity.

Charge Your Tablet

Charge your tablet fully before turning it on and starting the set up process.



WARNING: Only use the charger and cable supplied with the tablet. Using incompatible chargers or tampering with the charging port may damage your tablet and void the warranty.

Using Your Tablet

Turning Your Tablet On/Off

- To turn on your tablet, press and hold the Power/Lock button.
- To turn off your tablet, press and hold the Power/Lock button , and tap Power off on the screen when it appears.

NOTE: The first time you turn on your tablet, you may need to activate it. Follow the on-screen instructions to set up your device.

Locking/Unlocking the Screen

- To turn on your screen, press the Power/Lock button.
- To turn off your screen and prevent accidental key presses, press the Power/Lock button.

Touch Screen Tips

Use touch gestures to navigate around the screen, open menus, select items, zoom in and out of web pages, and more. Several touch gestures are recognized:

- Tap: Tap the screen with your finger to select items or press buttons.
- Touch and Hold: Touch and hold an item on the screen (such as a link in a web page) to open available options.
- Swipe: Quickly slide your finger in any direction to swipe.
- Drag: Touch and hold an item, then move it to a new position to drag it.
- Double Tap: Double tap to zoom in/out on a picture.
- Multi-touch: Pinch or spread your thumb and index finger to zoom in or out.

Battery

Observe the following precautions:

- Do not attempt to open the back cover.
- Do not attempt to eject, replace, or open the battery.
- Do not puncture the back cover of your tablet.
- Do not burn or dispose of your tablet in household rubbish. As a unibody device, the tablet and battery must be disposed of in accordance with locally applicable environmental regulations.

This symbol on your tablet, the battery, and the accessories means that these products must be taken to collection points at the end of their life:
· Municipal waste disposal centers with specific bins for these types of equipment.
· Collection bins at points of sale.
They will then be recycled, preventing harmful substances from being disposed of in the environment, and allowing their components to be reused.



Regulatory Information

FCC Compliance Statement:

Note: The following statement applies to all FCC-approved products.Applicable products have the FCC logo on the product label and/ or an FCC ID in the format FCC ID: 2BLKHT100.This equipment has been tested and found to comply with the limits for a Class B digital device,pursuant to part 15 of the FCC Rules. These limits are designed to provide reasonable protection against harmful interference in a residential installation. This equipment generates,uses and can radiate radio frequency energy and,if not installed and used in accordance with the instructions,may cause harmful interference to radio communications. cause harmful interference to radio or television reception,which can be determined by turning the equipment. However,there is no guarantee that interference will not occur in a particular installation. If this equipment does