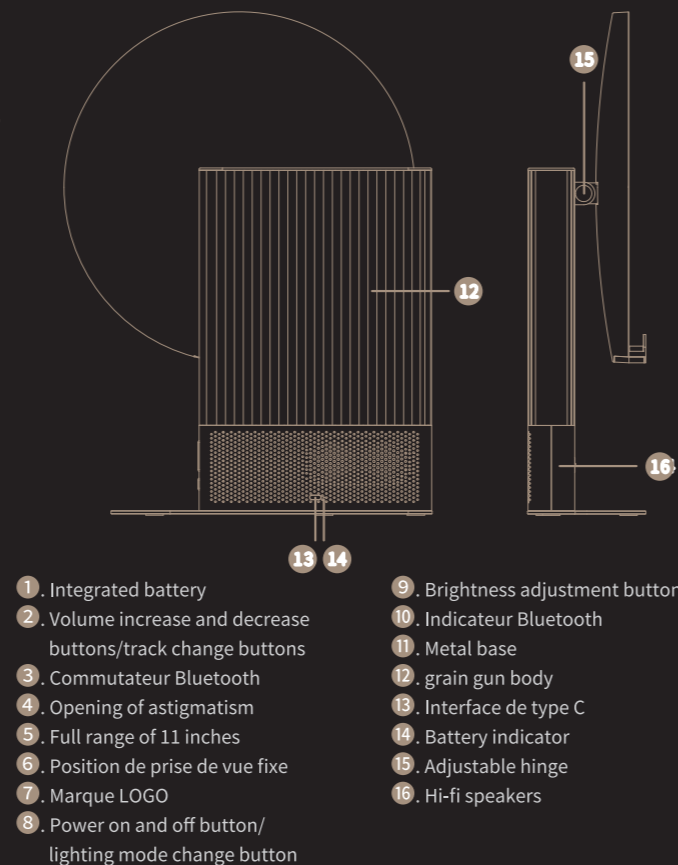


PRODUCT PRESENTATION

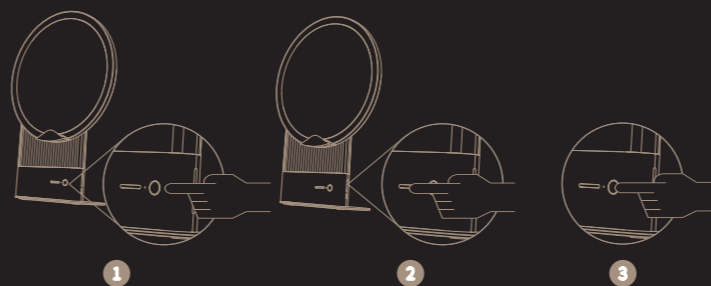
Welcome to the Joy Realm AI Smart Skin



1. Integrated battery
2. Volume increase and decrease buttons/track change buttons
3. Commutateur Bluetooth
4. Opening of astigmatism
5. Full range of 11 inches
6. Position de prise de vue fixe
7. Marque LOGO
8. Power on and off button/lighting mode change button
9. Brightness adjustment button
10. Indicateur Bluetooth
11. Metal base
12. grain gun body
13. Interface de type C
14. Battery indicator
15. Adjustable hinge
16. Hi-fi speakers

PRODUCT INSTRUCTIONS

01 Basic characteristics



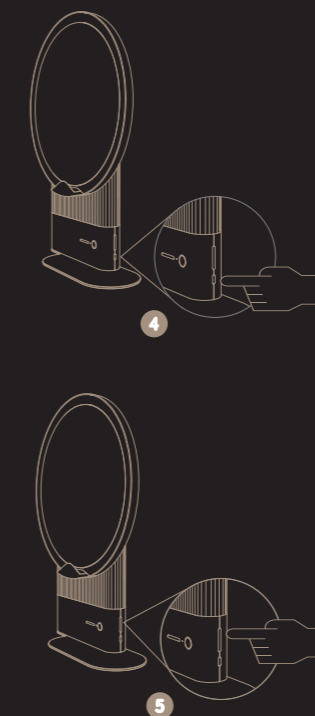
A Activate and deactivate the parameters

- 1 Turn on and off: Press the power button and hold it down for 3 seconds to turn on Turn off in 3 seconds.

B Lighting parameters

- 2 Setting the brightness
 1. Brightness reduction button
 2. Button to increase the brightness of the light
- 3 Change of lighting mode
 - Press briefly to activate the light switching mode, Cold / warm / hot color / turn off lights Turn on the lights and turn them on in turn

C Bluetooth speaker settings



- 4 Bouton de commutation Bluetooth:
Press and hold for 2 seconds to connect to Bluetooth

- 5
 1. Volume up button above, Press and hold to increase the volume, Press briefly on the previous song.
 2. Volume down button under, Press and hold to turn down the volume, Briefly press on a song.

02 A NEW GENERATION OF FOUR LIGHTS IN STAGE MODE

LIGHT IN STAGE MODE: COLD LIGHT MODE IN OFFICE SCENARIOS
Delicate care before makeup, skin texture, More intimate Temperature: 6000K

LIGHT IN STAGE MODE: HOT LIGHT MODE FOR BANQUET SCENES
Create a warm atmosphere inside, More intimate Temperature: 3200K

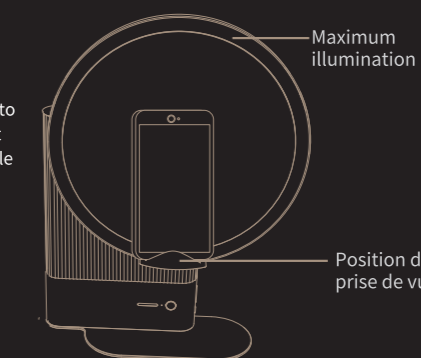
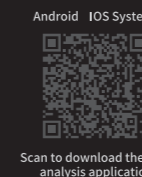
LIGHT IN STAGE MODE: NATURAL LIGHT MODE FOR OUTDOOR SCENES
Restore color to natural light, makes makeup more natural Temperature: 5500K

LIGHT IN STAGE MODE: INDOOR STAGE ENTERTAINMENT SUPPLEMENTARY LIGHTING MODE
Selfie filling light, Watching movies is more enjoyable Temperature: 4500K

03 INSTRUCTIONS FOR USING THE SCENE

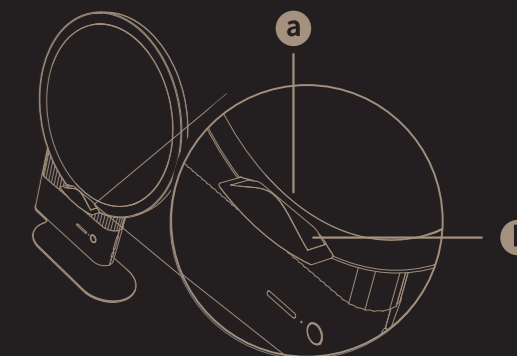
A Skin Analysis Scenario AI

Fixed position of the camera to take pictures and fill the light
The skin analysis of the mobile application is more accurate



GRAVITY BUTTON

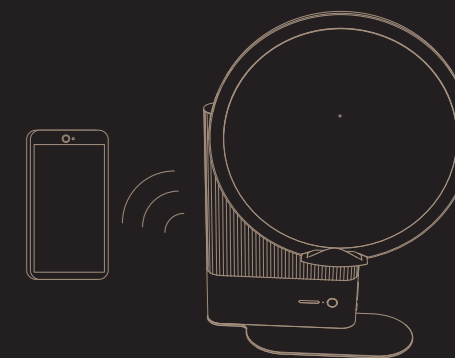
Instructions for the gravity switch:
Turn off the gravity B by the weight pressure A of the cell phone. When triggered, the light reaches its brightest value, i.e. the best condition of the booster light.



- a Position de prise de vue fixe
- b Gravity (Band appearance), After starting up, the light reaches its brightest value

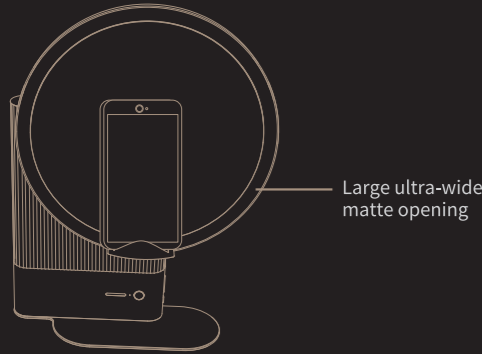
B Musical scene

Stereo Bluetooth speaker
Listen to music with immersive makeup



C Beautification scenes

Fixed position of the auxiliary light, large soft opening,
Live streaming/photo taking A valuable help for shooting videos



D Free scene

Watching dramas, studying and office scenes



THE MAIN PRODUCT
PARAMETERS

Nom du produit: AI Smart Skin Mirror Youth Edition
AI Smart Skin Mirror Edition Jeunesse

Product category:XM1

Product dimensions:315x432x101.5mm

Product weight:2000g

Battery capacity:1000mAh

Nominal inputs:5V == 2A

PRECAUTIONS

Please use the original Type-C charging cable for charging, do not twist too much or bend the charging cable to avoid damaging the charging cable or affecting the normal load.

Do not place the product in an area easily accessible to children or pets to prevent the lens from breaking and causing scratches and other hazards.

It is strictly forbidden to place this product near or in the fire source with the integrated lithium battery, to avoid any risk of fire or explosion.

03

TERMS OF AFTER-SALES SERVICE

This warranty service policy is formulated by Zhiyan Future, if you encounter after-sales problems when using this product, please contact the seller on time, and the seller will solve your after-sales problems according to this warranty service policy. From the date you receive the item, you have 7 days to choose to return, exchange or repair it, within 15 days you can choose to exchange or repair it, and within 18 months you can choose to repair it.

Other situations that do not fall within the scope of the free return and the free warranty: more than the validity period of the three warranties; Damage caused by failure to use, maintain and store the product in accordance with the requirements of the instructions for use; Damage is caused by the repairer who is not responsible for the three warranties; There is no valid triple warranty certificate and no valid invoice (except for those who can prove that the product is within the validity period of the triple warranty); Unauthorized modification of the three warranty certificate; The model or product number on the triple warranty certificate does not match the actual product; There is no production date or product certificate; Damage caused by force majeure.

There are urgent questions that must be answered quickly
Please call our hotline:400-6996-333

05

VOUCHER FOR THREE PACKS

| | | | |
|-------------------|---|---------------|--|
| User name | | Product name | |
| | | Purchase date | |
| User address | | | |
| Cell phone number | | | |
| Adresse courriel | | | |
| Fabricants | Zhiyan Future (Shenzhen) Information Technology Co., Ltd. | | |

1. This certificate applies only to SIMETRA products regularly sold in Chinese Mainland.
2. When benefiting from the three-guarante service, you must provide this card and a valid invoice or order number.
3. The three-guarantee certificate may obtain a one-year free warranty from the date of purchase."

06

AUCUNE GARANTIE

- 1The validity period of the three guarantees has been exceeded
2. Damage caused by unauthorized repair, misuse, collision, negligence, abuse, liquid penetration, accident, modification, disassembly
3. Damage caused by non-use, maintenance and storage of the product according to the requirements of the instructions for use
4. Damage caused by force majeure
5. Tear or modify labels, machine serial numbers or safety markings
6. Outdoor packaging, accessories, gifts and product instructions are incomplete and the invoice is missing or modified
- 7 The ""Three Warranties"" certificate model is inconsistent with the product model repaired or modified



SIMETRA

Nom du produit: AI Smart Beauty Mirror · Youth Edition
Product category: XM1
Nominal inputs: 5V == 2A
Apply the standard: GB4943.1-2022,GB7000.1-2015,GB7000.204-2008 .
Brand side: Zhiyan Weilai (Shenzhen) Information Technology Co.
fabricant: Zhiyan Weilai (Shenzhen) Information Technology Co., Ltd.
Production address: A1107, Building 2, Bay Science and Technology Ecological Park, No. 1809, Shahe West Road, High Technology Zone, Yuehai Street, Nanshan District,
Official website: www.simetra.cn
Hotline: 400-6996-333



04

FCC Warning:

This equipment has been tested and found to comply with the limits for a Class B digital device, pursuant to part 15 of the FCC Rules. These limits are designed to provide reasonable protection against harmful interference in a residential installation. This equipment generates, uses and can radiate radio frequency energy and, if not installed and used in accordance with the instructions, may cause harmful interference to radio communications. However, there is no guarantee that interference will not occur in a particular installation. If this equipment does cause harmful interference to radio or television reception, which can be determined by turning the equipment off and on, the user is encouraged to try to correct the interference by one or more of the following measures:

- Reorient or relocate the receiving antenna.
- Increase the separation between the equipment and receiver.
- Connect the equipment into an outlet on a circuit different from that to which the receiver is connected.
- Consult the dealer or an experienced radio/TV technician for help.

Caution: Any changes or modifications to this device not explicitly approved by manufacturer could void your authority to operate this equipment.

This device complies with part 15 of the FCC Rules. Operation is subject to the following two conditions:

(1) This device may not cause harmful interference, and (2) this device must accept any interference received, including interference that may cause undesired operation.

This equipment complies with FCC radiation exposure limits set forth for an uncontrolled environment. This equipment should be installed and operated with minimum distance 0cm between the radiator and your body.