

# BuVortex V5

ROBOTIC  
POOL CLEANER



## **Thank you for choosing BUBLUE BuVortex V5 Robotic Pool Cleaner.**

We appreciate your trust in us to keep your pool clean and ready for your enjoyment. This manual is your comprehensive guide to operating, maintaining, and maximizing the performance of your BUBLUE BuVortex V5 Robotic Pool Cleaner. Before you begin using your new Robotic Pool Cleaner, we strongly recommend taking a few moments to review this manual thoroughly, to ensure a smooth and trouble-free experience. If you have any questions or need further assistance while using this product, please don't hesitate to contact us at [support@bubluerobot.com](mailto:support@bubluerobot.com) for prompt support.

## FCC Statement

This equipment has been tested and found to comply with the limits for a Class B digital device, pursuant to part 15 of the FCC Rules. These limits are designed to provide reasonable protection against harmful interference in a residential installation. This equipment generates, uses and can radiate radio frequency energy and, if not installed and used in accordance with the instructions, may cause harmful interference to radio communications. However, there is no guarantee that interference will not occur in a particular installation. If this equipment does cause harmful interference to radio or television reception, which can be determined by turning the equipment off and on, the user is encouraged to try to correct the interference by one or more of the following measures:

- Reorient or relocate the receiving antenna.
- Increase the separation between the equipment and receiver.
- Connect the equipment into an outlet on a circuit different from that to which the receiver is connected.
- Consult the dealer or an experienced radio/TV technician for help.

Caution: Any changes or modifications to this device not explicitly approved by manufacturer could void your authority to operate this equipment. This device complies with part 15 of the FCC Rules, Operation is subject to the following two conditions: (1) This device may not cause harmful interference, and (2) this device must accept any interference received, including interference that may cause undesired operation.

## RF Exposure Information

This equipment complies with FCC radiation exposure limits set forth for an uncontrolled environment. This equipment should be installed and operated with a minimum distance of 20 cm between the radiator and your body.

## Contents

---

INTRODUCTION .....	02
PACKING LIST .....	02
SAFETY GUIDELINES .....	03
PRODUCT SPECIFICATIONS .....	04
OPERATING INSTRUCTIONS .....	05
APP USER GUIDE .....	11
TROUBLESHOOTING .....	16
WARRANTY .....	17

---



## IMPORTANT SAFETY INSTRUCTIONS

**Please read and follow the instructions below:**

- 
1. Do not use BuVortex V5 Robotic Pool Cleaner (hereafter referred to as the "cleaner") under conditions that exceed its operating limits. Before use, please carefully read this manual and strictly follow the instructions. BUBLUE will not be liable for any losses or injuries caused by improper use.
  2. Use only genuine or recommended accessories.
  3. This cleaner is not intended for children or individuals with mental impairments. If necessary, it should be used under the supervision of a guardian. Do not allow children to sit on or play with the product as a toy.
  4. To prevent accidents, the cleaner must be removed from the pool during charging. Both the cleaner and the charger should be placed indoors or under a rainproof structure for charging. Ensure that the cleaner and charger are dry before charging.
  5. Please only use the original charger to charge the cleaner.
  6. After taking the cleaner out of the water, please let the area around the charging port dry before connecting it to the power supply. Also, please make sure the cleaner is turned off (the indicator light is completely off) when charging; otherwise, it will not charge properly.
  7. The charger must be plugged into a socket with leakage protection, and the socket's ground wire must be properly and reliably grounded.
  8. It is strictly forbidden to use any other power source to charge the cleaner or use the cleaner's charger to charge other battery-powered devices, as this may damage the cleaner or the charger.
  9. When the cleaner is charging, do not repeatedly plug and unplug the charger, as this may damage the machine.
  10. Do not allow anyone to enter the water while the cleaner is operating to avoid potential hazards.
  11. Do not turn the cleaner on when it's placed on land/not in the water, as this may affect its normal operation.
  12. Clean the filter basket after each use to prevent excess debris from affecting the cleaner's performance.
  13. Store the cleaner in a cool, ventilated indoor area when not in use, avoiding direct sunlight.
  14. Only trained professionals should disassemble the cleaner's sealed box assembly to avoid danger or damage to the unit.
  15. Charge the cleaner before its battery is completely depleted. When the cleaner's power starts to decline, stop the unit and begin charging.
  16. The motor oil seal contains lubricant. In the event of a lubricant leak, it may cause light water contamination.
  17. Do not puncture the cleaner's shell with nails or sharp objects, and avoid hammering, striking, or throwing the unit.
  18. Do not charge the cleaner near open flames or under extreme heat, and do not use or store the cleaner near heat sources.
-

## 1. INTRODUCTION

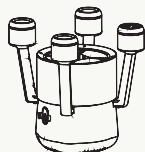
BuVortex V5 Robotic Pool Cleaner is an innovative and highly efficient device designed to keep your pool's surface sparkling clean. It effortlessly cleans the pool surface by capturing floating debris and sediment with its innovative suction mechanism and advanced filtration system.

This cleaner has two cleaning modes: Auto Mode – the cleaner moves through the pool for regular surface cleaning; Corner Boost Mode – the cleaner parks at pool edges and draws in debris from the surrounding pool surface for enhanced cleaning of pool edges and corners.

This unit is powered by a lithium-ion battery pack, and thus has a high level of safety.

Before using this product, please take a moment to read through this manual to ensure optimal performance.

## 2. PACKING LIST



Robotic Pool Cleaner ×1



Charger ×1



User Manual ×1



Hook ×1



Filtration Cotton Pad ×2



Overflow-prevention Net ×8



### 3. SAFETY GUIDELINES

1. Requirements for the cleaner's charging position: Refer to "Important Safety Instructions" Item 4.
  2. Do not operate the cleaner for pool cleaning while it's charging.
  3. Operate the cleaner in an environment with temperatures between 50°F and 95°F (10°C to 35°C).
  4. Charge the cleaner before its battery is completely depleted. When the cleaner's power starts to decline, stop the unit and begin charging.
  5. Do not charge the cleaner when its battery is already sufficiently charged. Overcharging can reduce the battery's lifespan.
  6. Charge the cleaner in an environment with a temperature between 41°F and 95°F (5°C to 35°C). If the battery is overheated, allow it to cool down before charging.
  7. Charge the cleaner every three months when storing it for an extended period. Please use the original charger to charge the cleaner, and ensure the unit's battery remains between 40% and 60%. If the cleaner is left uncharged for a long time, its battery may self-discharge to a level below the over-discharge protection voltage, which, if prolonged, can cause irreversible damage to the battery. Please pay close attention to this.
-





4. PRODUCT SPECIFICATIONS

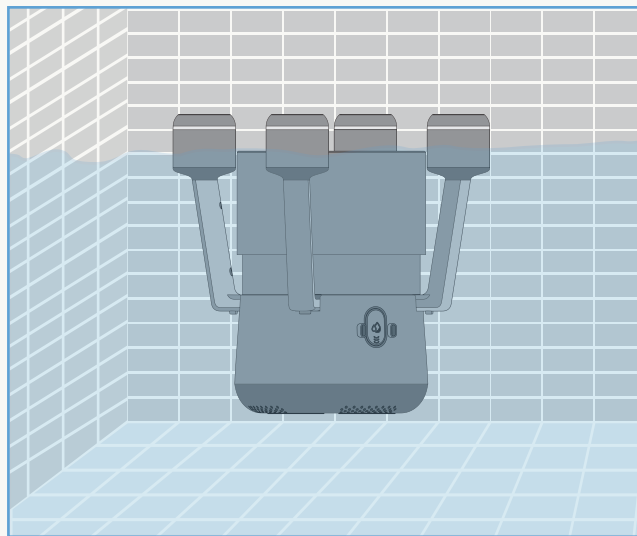
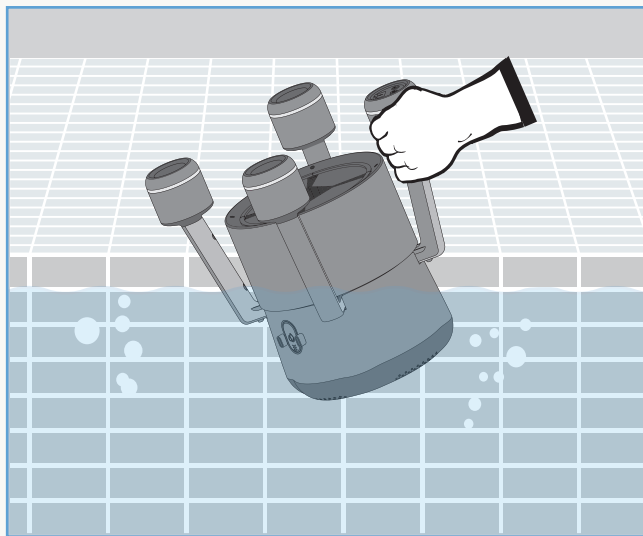
Product Model	F10		
Charger's Input Voltage	100Vac - 240Vac; 50/60 Hz	Filtration Density	Max. 35 PPI
Charger's Rated Output Current	3.8A	Filter Basket Capacity	5 L
Charger's Rated Output Voltage	12.6V	Moving Speed	Max. 33 ft/min (13 m/min)
Cleaning Mode	Auto/Corner Boost	Waterproof Rating	IPX8
Cleaning Cycle	Max. 180 min	Weight	11.5 lbs (5.2 kg)
Coverage Area	Max. 538 ft² (50 m²)	Cleaner Dimensions	15.7 inch*13 inch*13 inch (400 mm*331 mm*331 mm)
Cleaning Depth	Min. 1.6 ft (0.5 m)	Storage Temperature	41°F to 95°F (5°C to 35°C)
Charging Time	4 h	Operating Temperature	50°F to 95°F (10°C to 35°C)

## 5. OPERATING INSTRUCTIONS

### 5.1 Cleaner Setup


**Place the cleaner into the pool to begin operation:** When placing the cleaner into the pool, ensure that its bottom faces downward toward the pool floor. Hold the float modules and gently lower the cleaner into the water. The cleaner will slowly release its internal air. Once the air is fully expelled, press the cleaner's power button to turn it on (press the button once to enter Auto Mode; press twice to enter Corner Boost Mode) – it will begin operating after 5 seconds.


(Please ensure all the cleaner's internal air is completely released, as remaining air may affect the cleaner's proper functioning.)





### 5.1.1 Button Guide

Button Image	Button Function
	Power Button

Button Image	Button Function
	Bluetooth

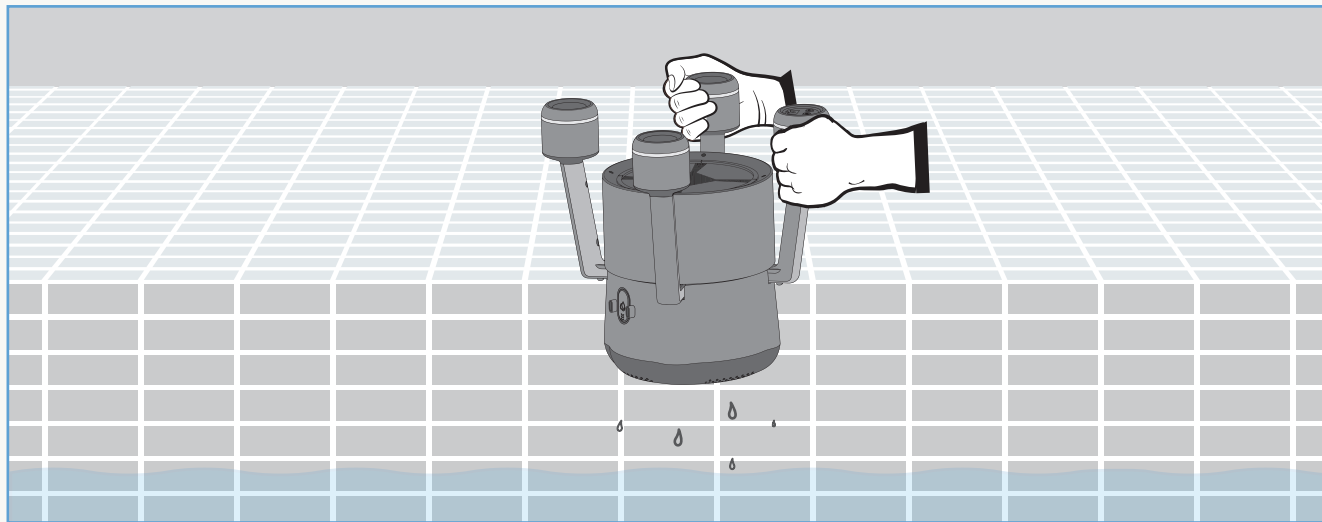
### 5.1.2 Indicator Light Guide

Operating Status	Indicator Light Display
Normal Operation under Auto Mode: Battery Level 20%-100%	Blue light constant
Normal Operation under Corner Boost Mode: Battery Level 20%-100%	Orange light constant
Low Power: Battery Level < 20%	Yellow light constant
Self-Parking near the wall	
Operation Stopped (Motor stops operating) / Cleaning Cycle Completed	Yellow light flashing
Charging	Green light constant
Fault	
Please check whether the cleaner's water inlet is blocked. After powering off and restarting the cleaner, try operating it from a different location. Also, please check if the cleaner is fully submerged in water. For any other hardware issues, please contact our customer support for help.	Red light constant

## 5.2 Charging

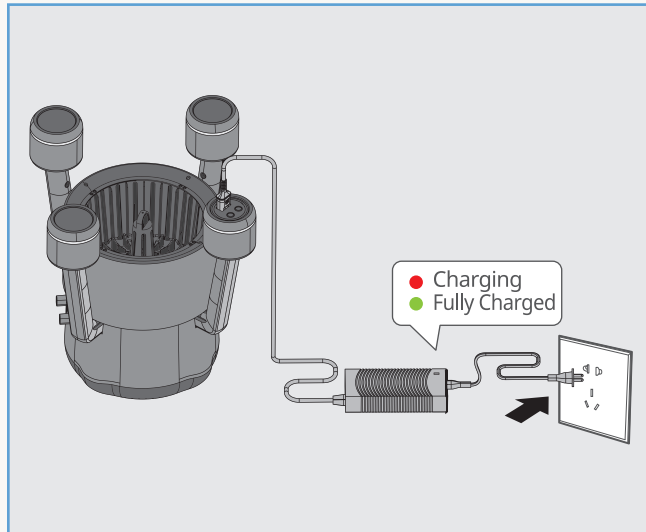
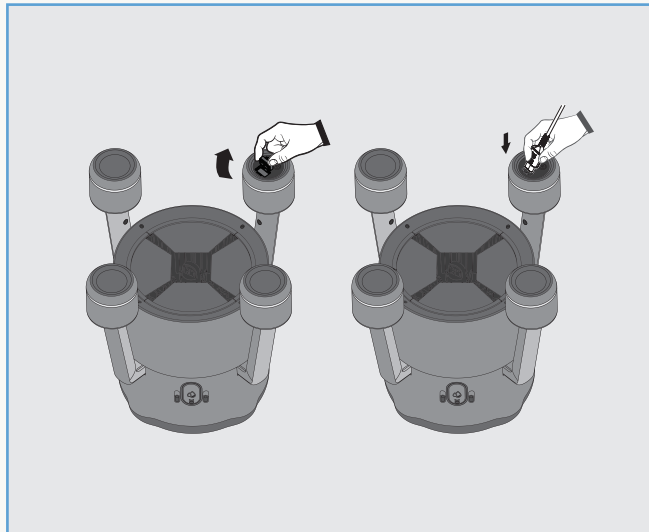
### Charging Instructions

- 1 After the cleaner completes its cleaning cycle, it will automatically move to the poolside (or you can press “Return to Waterline” button in the App to have the cleaner instantly park itself near the wall, when its cleaning task is nearly completed). Retrieve the cleaner by gently pulling it out of the water.



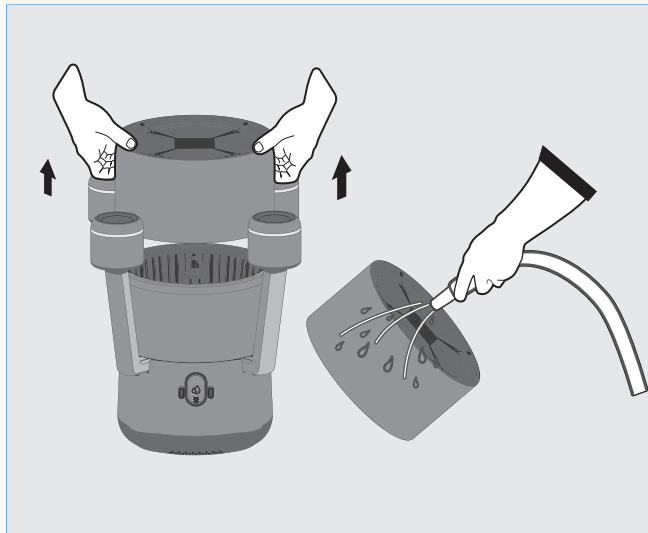
## Charging Instructions

- ② Before charging, ensure the cleaner is powered off (the indicator light is completely off). When charging, please place the cleaner and the charger indoors or in a sheltered area with rain protection. The charger's indicator light will be red while charging, and turn green when charging is completed.

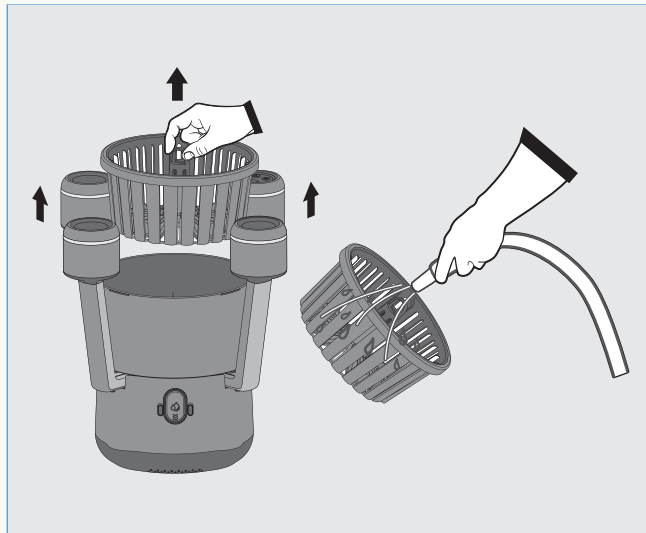


### 5.3 Filter Basket Cleaning & Installation

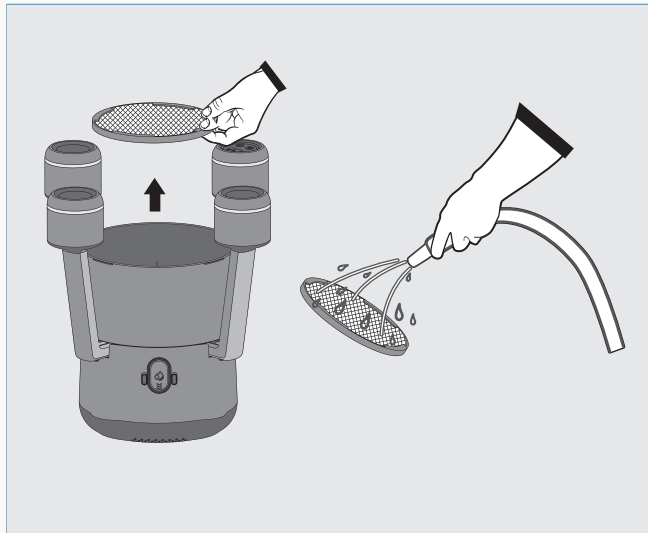
- 1 Overflow-prevention Net Cleaning:** Place the cleaner at the poolside. Take out the overflow-prevention net as illustrated, and rinse the net to clean it.



- 2 Filter Basket Cleaning:** After the overflow-prevention net is removed, the filter basket will be revealed as illustrated. Take out the filter basket, take the collected trash out of it, and wash it with clean water.



- 3 Filtration Cotton Pad Cleaning:** After the filter basket is removed, the filtration cotton pad will be revealed. Take out the filtration cotton pad as illustrated, and rinse off the debris on the pad thoroughly with clean water.



- 4 Filter Basket Installation:** Reinstall the filtration cotton pad, filter basket, and overflow-prevention net onto the cleaner in order. Make sure each component is properly and securely installed to ensure the cleaner's proper functioning.



## 6 APP USER GUIDE

### 6.1 Download & Installation

01: Search for the “Bublu” App on the Apple Store or Google Play. Download and install it on your phone.

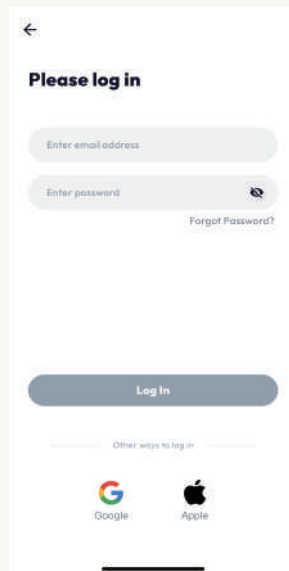


### 6.2 Registration & Connection

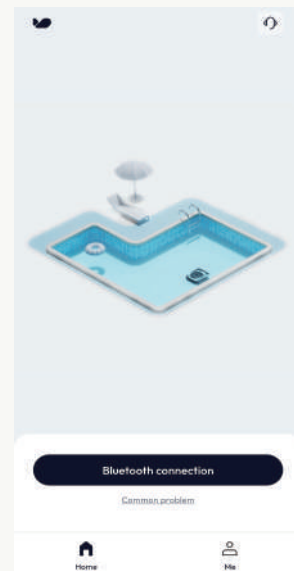
01: Open the App & Create an account.



02: Log in to the account.



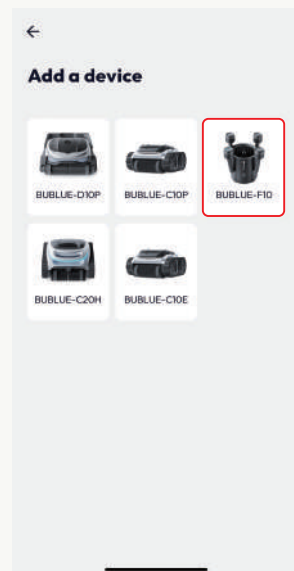
03: Click “Bluetooth connection”.



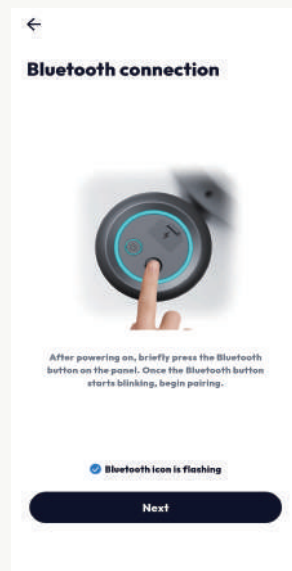


## 6.2 Registration & Connection

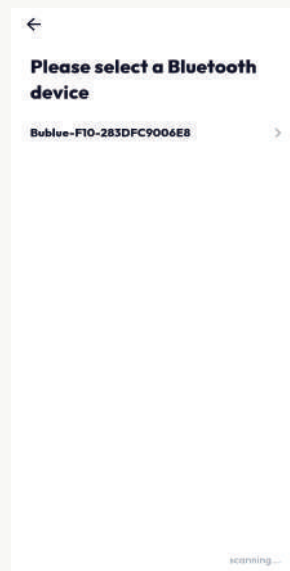
04: Choose BUBBLUE-F10 to add.



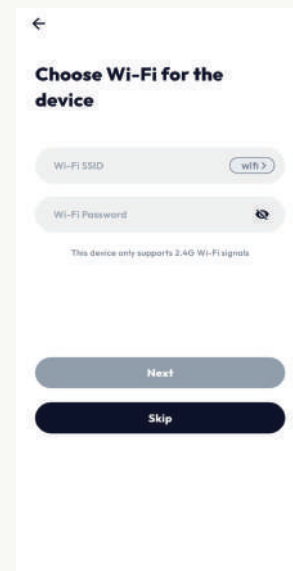
05: Turn on the cleaner's Bluetooth (Press the Bluetooth button on the cleaner, and make sure the button is flashing).



06: Select the cleaner to connect.

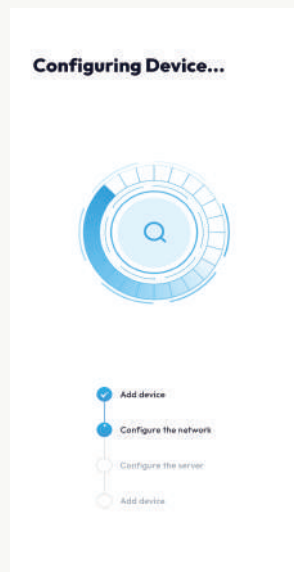


07: After Bluetooth is successfully connected, click "Select WIFI" to connect the cleaner to a WIFI network.

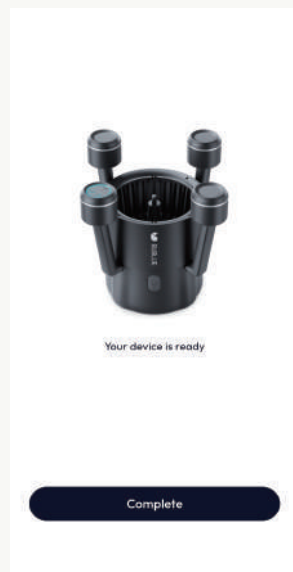


## 6.2 Registration & Connection

08: Please wait for the cleaner's registration, initialization, and WIFI connection to finish.

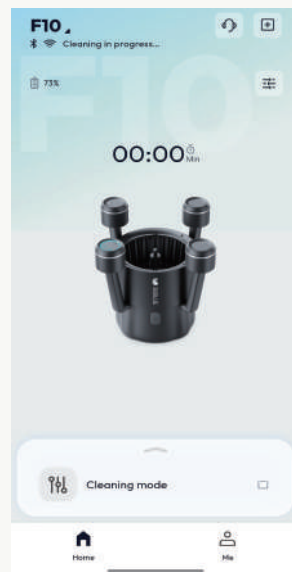


09: Cleaner registration and initialization are completed. Cleaner is connected to WIFI and ready to work.

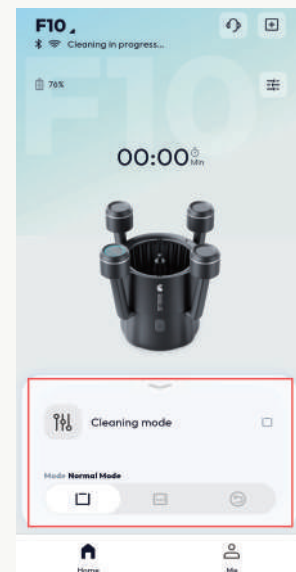


## 6.3 Cleaner Operation: Start a cleaning task

01: Make sure the cleaner is powered on, connected to Bluetooth and WIFI, and ready to work.

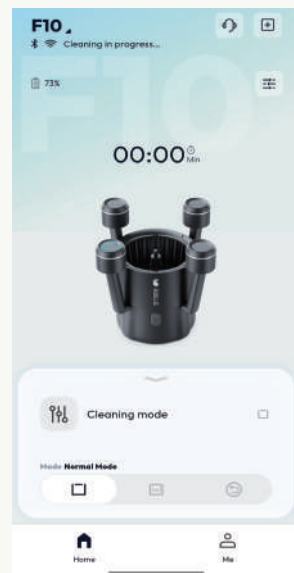


02: Swipe up to open the adjustment module. Select the cleaner's cleaning mode.



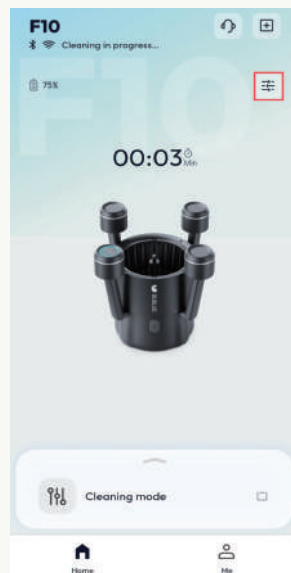
### 6.3 Cleaner Operation: Start a cleaning task

03: Place the cleaner into the pool. The cleaner will start operating after 5 seconds.

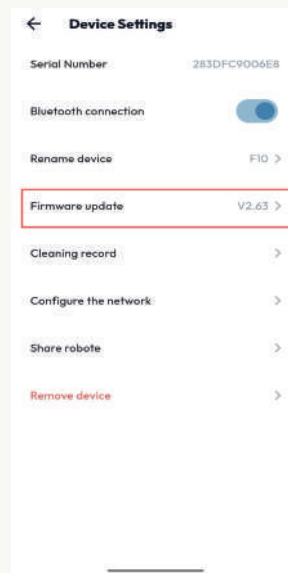


### 6.4 OTA Update

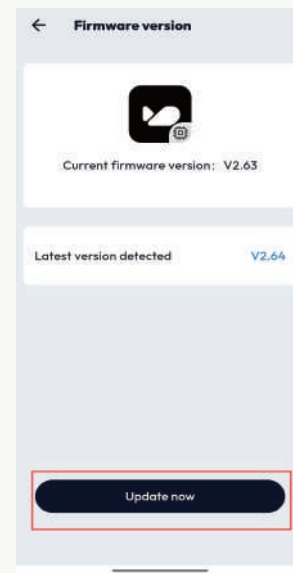
01: Press the "Settings" icon to open the Settings page.



02: Press "Firmware update".

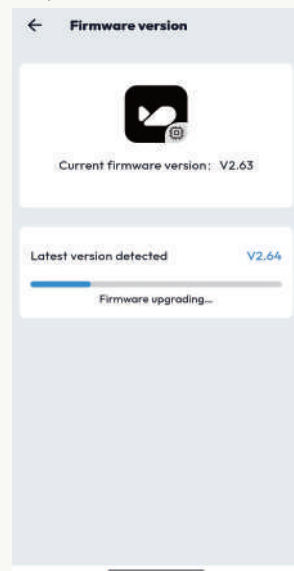


03: Press "Update now" to initiate the update process.

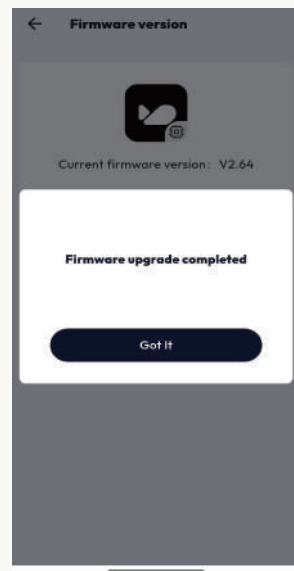


## 6.4 OTA Update

04: The update will be downloaded and installed automatically. DO NOT turn off the cleaner during this process.



05: Once the update is completed, you will receive a confirmation message.





## 7. TROUBLESHOOTING

Issue	Possible Cause	Possible Cause
Red light flashing	Cleaner is lifted out of the water without being powered off	Press the cleaner's power button to try restarting the cleaner.
	Debris stuck in the impeller	Power off the cleaner, then remove the debris.
Yellow light flashing	Battery depleted	Charge the cleaner.
Cleaner cannot be charged	Power outlet has no voltage	Check if the power outlet has voltage, or try a different power outlet.
	Power cord is not properly connected to the power outlet	Ensure the power cord is properly and securely connected to the power source/outlet.
	Loose connection between the power source and the cleaner	Check if the power cord is connected properly between the cleaner and the charger, as well as between the charger and the power outlet.
	Charger is malfunctioning	Check if the charger displays green light when being disconnected from the cleaner's charging port. If the light is off, the charger needs to be replaced.
	Water in the cleaner's charging port	Dry the charging port and try charging again.
Cleaner moves slowly or cleans inefficiently	Filter clogged	Clean the filtration cotton pad and remove debris from the filter basket.

**If these suggested solutions do not solve your problem, please contact our customer support team.**



## 7. WARRANTY

1.This product is covered by BUBLUE warranty for 12 months (only for the driving kit and battery) from the date of purchase.

Consumable parts, including the filter tray, brush, wheels, and nozzles, are beyond warranty.

2.This warranty is voided if the product has been altered, misused, or has been repaired by unauthorized personnel.

3.The warranty extends only to manufacturing defects and does not cover any damage resulting from the mishandling of the product by the owner.

4.The order number or record must be presented for any claim or repair during the warranty period.





# BUBLUE

## **BUBLUE TECHNOLOGY INC**

30 N Gould St, Ste R, Sheridan, WY 82801  
[www.bublu.com](http://www.bublu.com)  
[support@bubluerobot.com](mailto:support@bubluerobot.com)  
+1 888-418-6228



BUBLUE FACEBOOK



BUBLUE INSTAGRAM