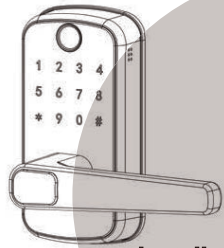




OLUMAT
Smart
Lock



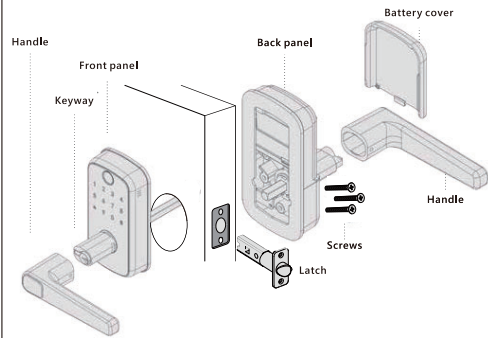
Installation Guide

Installation Video

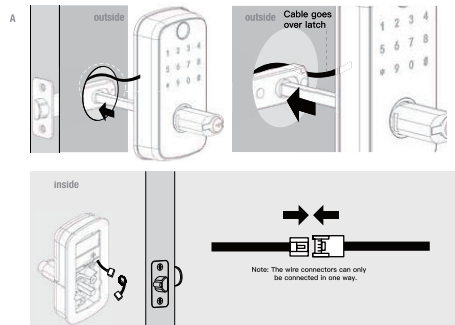


go to <https://www.olumatsafe.com/pages/b23-smart-lock-guide>
to watch installation video.

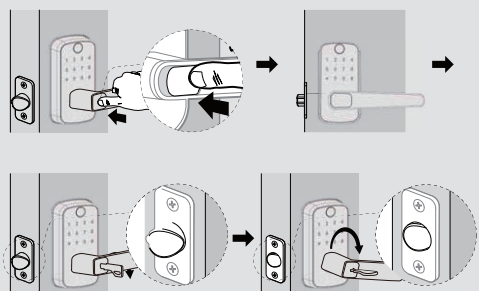
EXPLOSIVE VIEW



4 Install front panel and interior mounting plate



8 Insert the key and test the installation



WHAT'S INCLUDED

Latch and strike	Exterior Assembly	Interior Assembly	Screws
			Step 3
			Step 5
			Backup screws

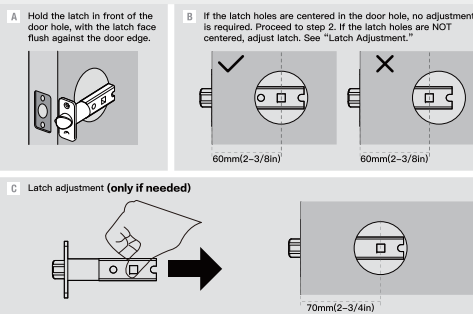


Phillips headscrews driver
Note: No drill needed

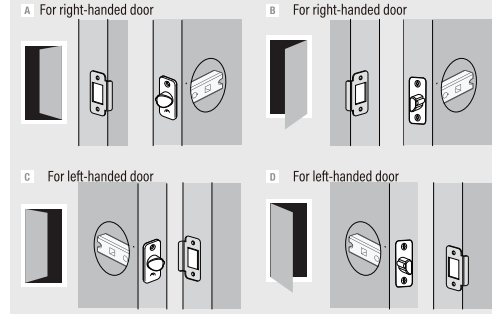
PRODUCT OVERVIEW

FRONT PANEL	BACK PANEL

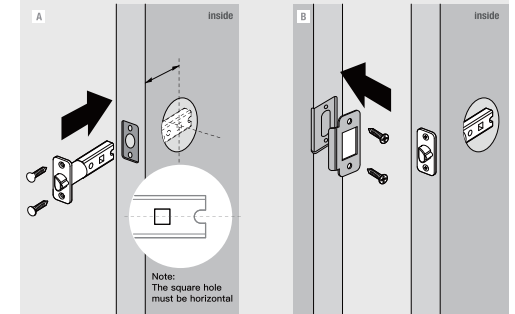
1 Adjust the backset of latch (if needed)



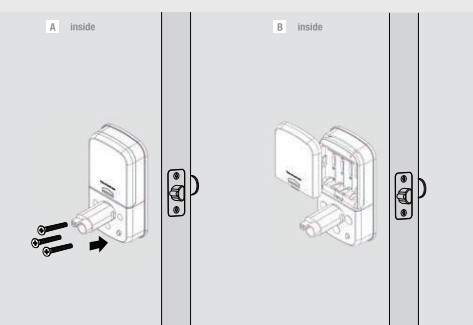
2 Determine the direction before installing latch (standing outside the door)



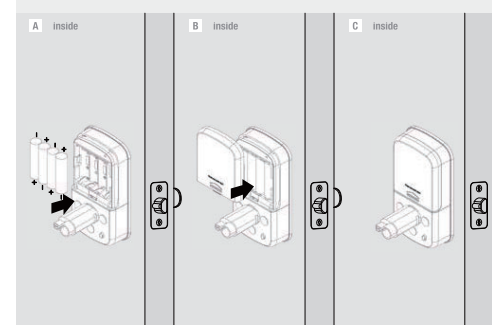
3 Install latch



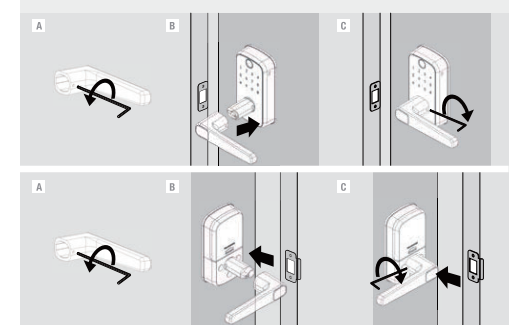
5 Connect wire connector and install back panel



6 Install 4 AA batteries and battery cover



7 Install the door handles



FCC WARNING

This device complies with part 15 of the FCC Rules. Operation is subject to the following two conditions: (1) this device may not cause harmful interference, and (2) this device must accept any interference received, including interference that may cause undesired operation.

Any changes or modifications not expressly approved by the party responsible for compliance could void the user's authority to operate the equipment.

NOTE: This equipment has been tested and found to comply with the limits for a Class B digital device, pursuant to Part 15 of the FCC Rules. These limits are designed to provide reasonable protection against harmful interference in a residential installation. This equipment generates, uses and can radiate radio frequency energy and, if not installed and used in accordance with the instructions, may cause harmful interference to radio communications.

However, there is no guarantee that interference will not occur in a particular installation. If this equipment does cause harmful interference to radio or television reception, which can be determined by turning the equipment off and on, the user is encouraged to try to correct the interference by one or more of the following measures:

- Reorient or relocate the receiving antenna.
- Increase the separation between the equipment and receiver.
- Connect the equipment into an outlet on a circuit different from that to which the receiver is connected.
- Consult the dealer or an experienced radio/TV technician for help.

To maintain compliance with FCC's RF Exposure guidelines, This equipment should be installed and operated with minimum 20cm distance between the radiator and your body. Use only the supplied antenna.

Email us first! We are here to help.

For any technical questions or support,
please email us at olumatsafe@gmail.com
or visit our website olumatsafe.com to chat with us.

Support is available:
MON-SUN-9 AM to 5 PM PST
www.olumatsafe.com