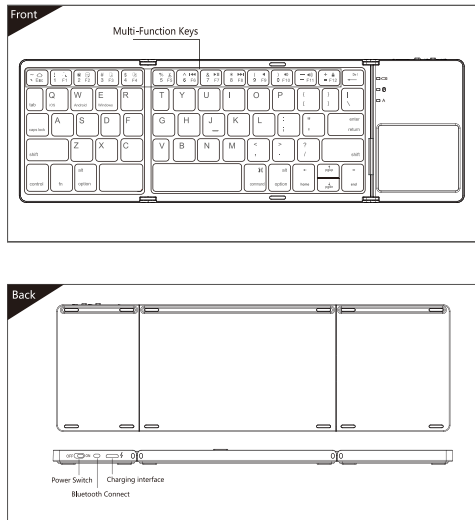


Three Layer Folding Touchpad Keyboard

User's Manual

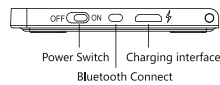


Compatible System

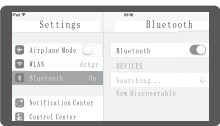
Win /iOS /Android

Note: Please read the user manual carefully before you start using this product

• iOS Connection Instructions:



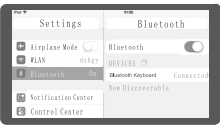
1.Please turn on the power at the side of the keyboard, blue lights up,press the Bluetooth connection button, blue light will twinkle and into the match mode quickly.



2.Open the tablet PC setting "Bluetooth" into searching and pairing status .

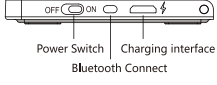


3.You will find the "Bluetooth Keyboard" and then click to next step .



4.There is a tip for connecting successfully , you can use your keyboard comfortably .

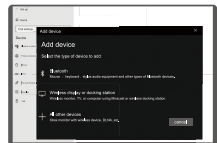
• Win10 Connection Instructions:



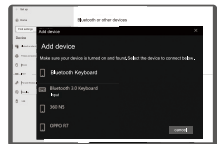
1.Please turn on the power at the side of the keyboard, blue lights up,press the Bluetooth connection button, blue light will twinkle and into the match mode quickly.



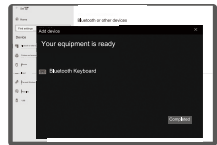
2. Open settings, turn on Bluetooth, click Add Bluetooth or other devices.



3.Select "Bluetooth" in the Add Device to search.

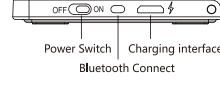


4. You will find the "Bluetooth keyboard " and then click the pairing name to connect.

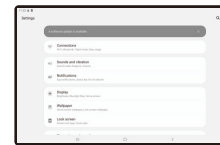


5.There is a tip for connecting successfully , you can use your keyboard comfortably .

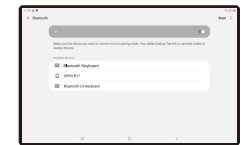
• Android Connection Instructions:



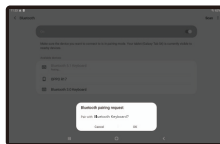
1.Please turn on the power at the side of the keyboard, blue lights up,press the Bluetooth connection button, blue light will twinkle and into the match mode quickly.



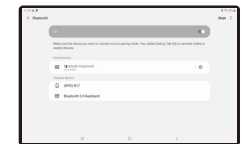
2. Open "Settings" and then click "Connect"



3. Turn on Bluetooth to search for the pair name.



4. Click the pair name "Bluetooth Keyboard". pair request is displayed, click OK.



5.There is a tip for connecting successfully , you can use your keyboard comfortably .

Remarks : After connecting successfully the next time you don't need match code, just open the Bluetooth keyboard power switch and the tablet PC "Bluetooth." The BT keyboard will search the device and automatic connects.

Product features

IOS/Android		Windows	
Fn+	Corresponding function	Fn+Shift+	Corresponding function
~ Esc 1 F1	Return to Desk	~ Esc 1 F1	Home
! Q 2 F2	Search	! Q 2 F2	Search
@ W 3 F3	Select	@ W 3 F3	Select
# E 4 F4	Copy	# E 4 F4	Copy
\$ R 5 F5	Stick	\$ R 5 F5	Stick
% Y 6 F6	Cut	% Y 6 F6	Cut
^ I 7 F7	Pre-Track	^ I 7 F7	Pre-Track
& O 8 F8	Play/Pause	& O 8 F8	Play/Pause
* P 9 F9	Next	* P 9 F9	Next
(M 0 F10	Mute	(M 0 F10	Mute
) B 1 F11	Volume-) B 1 F11	Volume-
_ V 2 F12	Volume+	_ V 2 F12	Volume+
+ Lock = F12	Lock	+ Lock = F12	Lock

Three system switching languages

iOS : control+Space key

Windows : Alt+Shift

Android : Shift+Space key / control+Space key

Three system input method switch

iOS: control+ Space key

Windows : control+ Shift

Android : control+ Shift

Technical Specifications

Keyboard size: 304,5 x 97,95 x 8 mm (open)

Touchpad size: 54,8 x 44,8 mm

Touchpad working current: <8.63 mA

Weight: 197.3g

Key working current: < 3 mA

Standby current: < 1.5 mA

Working distance: 10 m

Sleep current: < 60 µA

Lithium battery capacity: 140 mAh

Sleep time: Ten minutes

Working voltage: 3.7 V

Awaken way : Press key

Touchpad function description (Windows10), must be switched to Windows system



Tap —
The left of mouse button



Two-finger tap —
The right of mouse button



Two-finger slides vertically /
horizontally —
Mouse wheel



Two-finger separation /
collapse —
Zoom in / out



Three-finger tap —
Search



Three-finger slide to the
left continuously —
Switch the active window



Three-finger slides up —
Open the browser window



Three-finger slide to the
right continuously —
Active window switch



Three-finger slides down —
Go Home



Four-finger tap —
Open the (Actioncenter)

Touch pad function description (Android), must be switched to Android system



Tap — The left of mouse button



Two-finger tap-
Return



Two-finger slides
vertically —
Mouse wheel



Drag —
Mouse cursor

Touch pad function description (iOS 13.4.1 and above), must be switched to iOS system



Tap—Tap
(user-defined)



Drag —
Mouse cursor



Single finger
double tap and
then drag —
Drag



Two-finger tap —
Open the menu
(user-defined)



Two-finger slides
vertically —
Mouse wheel



Two-finger slides
horizontally —
Slide the desktop
left and right



Two-finger separation /
collapse —
Zoom in / out



Three-finger tap —
Desktop
(user-defined)



Three-finger slides
up — Open/hide
the bottom of the
application bar



Three-finger slides
down — Open all the
active windows



Three-finger slides
left — Active windows



Three-finger slides
right — Active windows



Four-finger tap —
Regional screenshots

User-defined:
Settings - Auxiliary Functions - Touch - Auxiliary Touches - Device -Click the keyboard's pairing name, and then customize the function of 'single finger, Two-finger,Three-finger'.

Status Display LED

- Connect : Open the power switch, blue lights up, press the connect button, blue light twinkles.
- Charging : Indicator light will be on red, after fully charging, the light crush out.
- Low Voltage Indication : When the voltage is below 3.3 V, red light twinkles.
- Caps lock light: blue light

Remarks: In order to prolong the life span of the battery, when you do not use the keyboard for a long time, please switch off the power.

Troubleshooting

Please contact the after-sales service.

Copyright

It is forbidden to reproduce any part of this manual without the permission of seller.

Safety instructions

Do not open or repair this device, Do not use the device in a damp environment. Clean the device with a dry cloth.

Warranty

The device is provided with one-year limited hardware warranty from the purchase day.

Keyboard Maintenance

- 1.Please keep the keyboard away from liquid or humid environment, saunas, swimming pool, steam room and don't let the keyboard get wet in the rain.
- 2.Please don't expose the keyboard at too high or too low temperature condition.
- 3.Please don't put keyboard under sun for a long time.
- 4.Please don't put keyboard close to the flame, such as cooking stoves, candles or fireplace.
5. Avoid sharp objects scratching products, timely to recharge products to ensure the normal use.

FAQ

1.The tablet PC can't connect the BT keyboard?

- 1) At first check the BT keyboard is into match code state, then open the table PC Bluetooth searching.
- 2) Checking the BT keyboard Battery is enough, the battery low is also lead to can't connect, you need charge.

2.The keyboard indication light always flashing when use?

Keyboard indication always flashing when use, is means the keyboard will be no power ,please charge the power as soon as possible.

3.The table PC display BT keyboard is disconnect?

The Bluetooth keyboard is not used for a period of time, the device will automatically enter the sleep state in order to save power. Press any key on the keyboard to wake up, and the Bluetooth connection will be automatically restored.

Warranty Card

User information

Company or personage full name

Contact address

TEL Zip

The purchased product name and model NO.

Purchased date

This reason due to the product broken and damage is not include on the warranty,
(1) accidents, misuse, improper operation, or any unauthorized maintenance, alteration, or disassembly;
(2) Improper operation or maintenance, violation of product instructions or improper connection of power during use;
(3) Or use consumables (such as spare batteries) that are not provided by the company but applicable laws Except where such restrictions are prohibited.



FCC Warning

This device complies with part 15 of the FCC Rules. Operation is subject to the following two conditions: (1) This device may not cause harmful interference, and (2) this device must accept any interference received, including interference that may cause undesired operation.

Any Changes or modifications not expressly approved by the party responsible for compliance could void the user's authority to operate the equipment.

Note: This equipment has been tested and found to comply with the limits for a Class B digital device, pursuant to part 15 of the FCC Rules. These limits are designed to provide reasonable protection against harmful interference in a residential installation. This equipment generates uses and can radiate radio frequency energy and, if not installed and used in accordance with the instructions, may cause harmful interference to radio communications. However, there is no guarantee that interference will not occur in a particular installation. If this equipment does cause harmful interference to radio or television reception, which can be determined by turning the equipment off and on, the user is encouraged to try to correct the interference by one or more of the following measures:

- Reorient or relocate the receiving antenna.
- Increase the separation between the equipment and receiver.
- Connect the equipment into an outlet on a circuit different from that to which the receiver is connected.
- Consult the dealer or an experienced radio/TV technician for help.

The device has been evaluated to meet general RF exposure requirement. The device can be used in portable exposure condition without restriction.