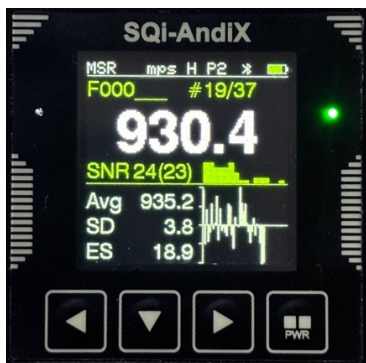


# AndiScan

Model A3

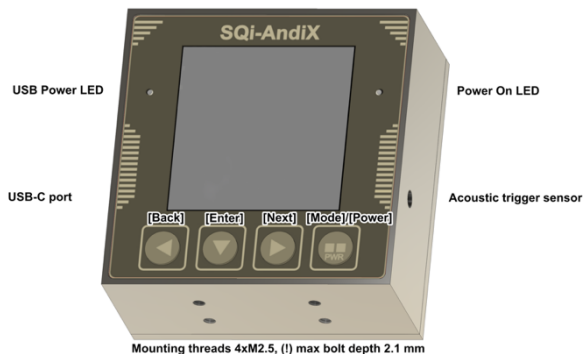
## Quick Start Guide



**SQi-AndiX**

*Quick Start Guide version A3.1.0 (7.7.2024)*

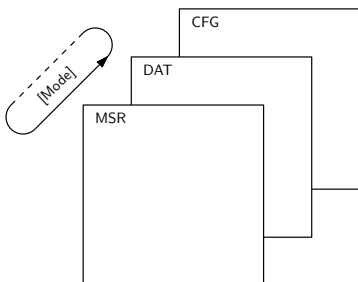
# Device



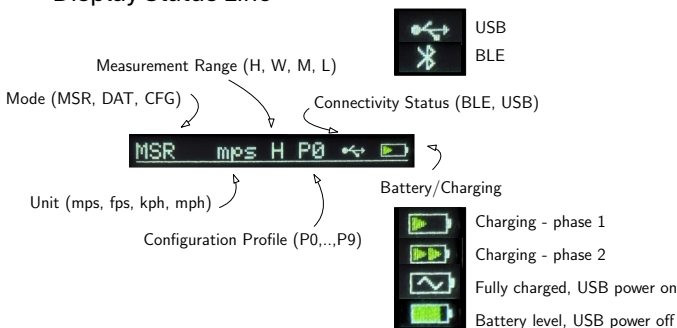
- Universal adapter (attached to the device)
  - Arca, 1/4" tripod thread, 20 mm custom rail
- Keys
  - [Back], [Enter], [Next], [Mode]
  - Long press (1 second)  
[Back-Long], [Enter-Long], [Next-Long]
  - Power on  
press and hold [Power] key for 2 seconds
  - Power off  
press and hold [Power] key for 3 seconds  
until Powering Off screen appears

# Modes of Operation

- [MSR] Measurement Mode
- [DAT] Data Mode
- [CFG] Configuration Mode



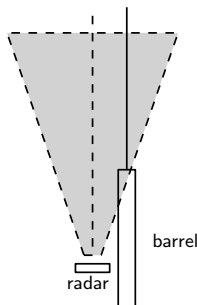
- Display Status Line



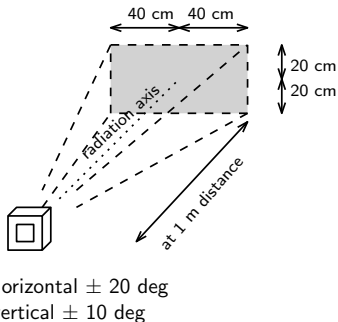
# Measurement Setup

- Mount the device on tripod or on the gun (additional adapter might be needed)
- Position the device
  - Antenna radiation pattern must intercept the bullet trajectory when it leaves the barrel
  - **Optimal side position**  
**5 - 10 cm from barrel axis**
  - **Optimal forward position**  
**30 - 70 cm back from the muzzle**
  - Avoid blocking the signal by obstacles (bipod, plasma gasses from muzzle brake)

correct positioning

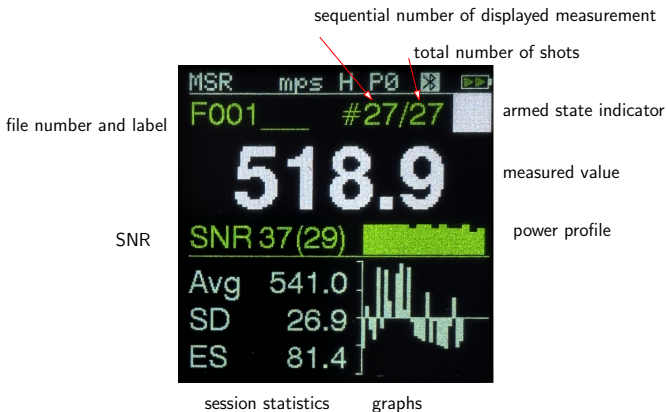


antenna radiation pattern



# Measurement Mode (MSR)

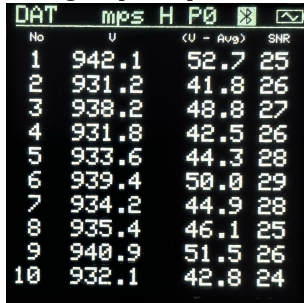
- Configuration Profile
  - Make sure that the configuration profile is suitable for your task - particularly, the **measurement velocity range** settings
- Measurement Screen



- Press [Enter] to **Arm** and **Disarm** the device
- **View data** for individual shots in the session
  - Press [Back]/[Next] to go backward/forward
- **Delete** currently shown shot
  - Press [Back-Long] to delete the shot
- **Save** the active session into the file
  - Press [Next-Long] to save the file
  - A new session will be automatically started

# Data Mode (DAT)

- Moving backward/forward in the list of files
  - Press [Back] or [Next]
- View file contents
  - Press [Enter] to view file data contents
  - 1st page - session statistics
  - Press again [Enter] - individual



No	U	(U - Avg)	SNR
1	942.1	52.7	25
2	931.2	41.8	26
3	938.2	48.8	27
4	931.8	42.5	26
5	933.6	44.3	28
6	939.4	50.0	29
7	934.2	44.9	28
8	935.4	46.1	25
9	940.9	51.5	26
10	932.1	42.8	24

- Press again [Enter] - subsequent data pages
- File operations menu
  - Press [Enter-Long] in the file list screen
    - Reopen file
    - Erase file
    - Label file

# Configuration Mode (CFG)

## CFG0 Configuration Profile (P0 .. P9)

- Profiles are pre-initialized by factory-default settings for various measurement scenarios

## CFG1 Triggering Mode/Gain

- SIG (Signal Detection), ACST (Acoustic Detection), EXT (External)

## CFG2 Detection Threshold

- Minimum SNR for valid measurement

## CFG3 Measurement Range

- H (High), W (Wide), M (Mid), L (Low)

## CFG4 Measurement Unit

- mps, fps, kph, mph

## CFG5 Carrier Frequency Channel

- auto, manual (24150, ..., 24220 MHz)

## CFG6 V0/Vx Side-Offset Compensation

- (see User Guide for details)

## CFG7 Display Settings

- Graph - Plot, Histogram, None, List
- Scheme - Display color scheme
- Light - Display backlight intensity
- Rotate - Display rotation

## CFG8 System Maintenance

- PSM erase - configuration, live session data
- SSD erase - data files and FW update files

## CFG9 System Information

- DeviceID, SW US/TxR Version, HW Version, Date/Time

# Remote Shell App

- Remote control, live measurement view, file management
- BLE (Bluetooth) and USB (Serial) connectivity
- Remote Shell App
  - <https://www.sqi-andix.com/RemShApp/A3RemSh.html>
- Remote Shell User Guide
  - <https://www.sqi-andix.com/a3-remshapp-guide/>

## More Information

- Support page (User Guides, FW update, Tutorials)
  - <https://www.sqi-andix.com/support/>
- General information
  - [www.SQi-AndiX.com](http://www.SQi-AndiX.com)
  - [info@SQi-AndiX.com](mailto:info@SQi-AndiX.com) (for general info)
  - [support@SQi-AndiX.com](mailto:support@SQi-AndiX.com) (for technical support)



#### FCC Caution.

This device complies with part 15 of the FCC Rules. Operation is subject to the following two conditions:

- (1) This device may not cause harmful interference, and
- (2) this device must accept any interference received, including interference that may cause undesired operation.

Any Changes or modifications not expressly approved by the party responsible for compliance could void the user's authority to operate the equipment.

Note: This equipment has been tested and found to comply with the limits for a Class B digital device, pursuant to part 15 of the FCC Rules. These limits are designed to provide reasonable protection against harmful interference in a residential installation. This equipment generates uses and can radiate radio frequency energy and, if not installed and used in accordance with the instructions, may cause harmful interference to radio communications. However, there is no guarantee that interference will not occur in a particular installation. If this equipment does cause harmful interference to radio or television reception, which can be determined by turning the equipment off and on, the user is encouraged to try to correct the interference by one or more of the following measures:

- Reorient or relocate the receiving antenna.
- Increase the separation between the equipment and receiver.
- Connect the equipment into an outlet on a circuit different from that to which the receiver is connected.
- Consult the dealer or an experienced radio/TV technician for help.

This equipment complies with FCC radiation exposure limits set forth for an uncontrolled environment. This equipment should be installed and operated with minimum distance 20cm between the radiator & your body.