

# 成品105x148mm 展开尺寸525x148mm

## Szspfq Grow Light Manual



Thank you for purchasing our products, we will regularly collect your opinions to make the products more perfect. Please read the instruction manual carefully. We provide 1 year after-sales service. If you have any questions, please contact us through Amazon or after-sales email.

### Packing list

Tripod x1  
Grow Light x1  
User Manual x1  
5V Power Adapter x1



### Controller Button Instructions

Warning: Do not look directly at lamp beads when lighting, so as not to stimulate the eyes

1. Main switch button: on/off
2. Timing function: Set to turn off the grow light after 3h/6/12 hours. Click in turn to display 3h/6h/12h. If the light does not light up, it means the timer has been cancelled. Do not set the timer at the same time in the app
3. Lighting modes button  
(1) Red Blue White Light: Red lights on/Red Blue White on/Off  
(2) Yellow Light: 1 lights on/3 lights on/5 lights on/Off
4. Brightness adjustment: 10-level brightness adjustment

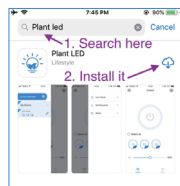
### The "Plant LED" APP Manual

1. You can download the "Plant LED" APP on the browser by scanning the manual or the QR code on the controller. For after-sales problems, please contact us through Amazon or shszspfq@163.com

2. The APP supports iPhone and Android systems and other smartphones. Please keep Bluetooth turned on when using it.

3. Downloading and using the APP takes iPhone as an example

3.1. Search the "Plant LED" in the "App Store" for iPhone; (In the "Play Store" for the Android phones).



3.2. Open the APP and select OK/Allow to turn on the Bluetooth of the Phone if the Bluetooth is in disabled status.



4. Connecting to the Lights

4.1. Connect the power supply and the controller will light up  
4.2. Click the top left icon, then push "My Device" to find the available lights.



4.3. Select the light you want to control in the list. blue ✓ stands for selected. You can change the name in Group Manage. The symbol on the right shows whether the connection is successful. L1 L2 L3 will be displayed if the connection is successful.



5. How to turn on Grow Light and L1, L2, L3 explanation

5.1. Choose the lights to be turned on, click the switch button to turn on/off the lights  
5.2. L1, L2, and L3 of different grow lights correspond to different light colors or lamp tubes



Warning: Do not look directly at lamp beads when lighting, so as not to stimulate the eyes

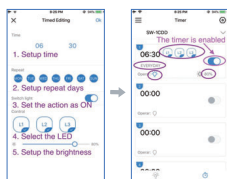
(1) Red Blue White Light: L1 Blue+White light, L2 Red light, L1+L2 full spectrum light, L3 not work

(2) Yellow Light: L1 the first and second lamp tubes, L2 the third and fourth lamp tubes, L3 the last lamp tube.

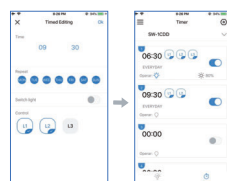
6. Click timing to set the timer to switch the light ON/OFF. The timing function does not have one-click reset. All timing related operations should be performed on the Timing Editing page. There are total 40 timers can be used to configure different actions for the grow light.

For example the below steps are used to let the L1, L2 and L3 ON at 6:30 every day; Then, L1 & L2 will be OFF at 9:30; Finally, the L3 will be OFF at 10:30.

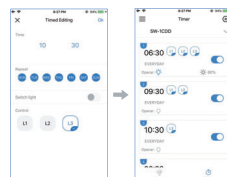
6.1. Set L1, L2, L3 ON at 6:30am every day, with 80% brightness



6.2. Set L1 & L2 OFF at 9:30am every day

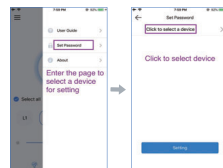


6.3. Set L3 OFF at 10:30am every day

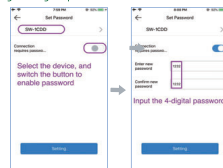


7. Security settings on the paired light devices. The light device can be probed by the "Plant LED" APP, the paired password can be configured to prevent the misuse connection.

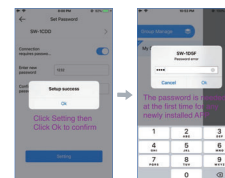
7.1. Click the top right icon, enter into the page and select the target device



7.2. Setting a 4-digital password



7.3. Finish setting and the password is needed at the first connection for a new APP



### FCC WARNING

This device complies with part 15 of the FCC Rules. Operation is subject to the following two conditions:

- (1) this device may not cause harmful interference, and
- (2) this device must accept any interference received, including interference that may cause undesired operation.

Any changes or modifications not expressly approved by the party responsible for compliance could void the user's authority to operate the equipment.

NOTE: This equipment has been tested and found to comply with the limits for a Class B digital device, pursuant to Part 15 of the FCC Rules. These limits are designed to provide reasonable protection against harmful interference in a residential installation. This equipment generates, uses and can radiate radio frequency energy and, if not installed and used in accordance with the instructions, may cause harmful interference to radio communications.

However, there is no guarantee that interference will not occur in a particular installation. If this equipment does cause harmful interference to radio or television reception, which can be determined by turning the equipment off and on, the user is encouraged to try to correct the interference by one or more of the following measures:

-- Reorient or relocate the receiving antenna.

-- Increase the separation between the equipment and receiver.

-- Connect the equipment into an outlet on a circuit different from that to which the receiver is connected.  
-- Consult the dealer or an experienced radio/TV technician for help.

To maintain compliance with FCC's RF Exposure guidelines, this equipment should be installed and operated with minimum 20cm distance between the radiator and your body. Use only the supplied antenna.

