



SPECIFICATIONS FOR APPROVAL

official version

The specification data is the sample antenna data. Due to factors such as the product not being glued to the shell, there may be differences between the trial production machine and the specification data. However, after correction with the trial production machine, the data can remain consistent with the specification data

Customer Name: JXX

Product Name: WIFI 2.4G+5G_ANT

Product Model: MH5

Part Number: LJF02-230726002-R0A

Write By : Pengsiheng

Issued Date: 2023/7/26

CUSTOMER

ENGINEER R&D DEPT	BUSSINESS DEPT	APPROVED BY	DATE	Edition/Part number

LEJIN

R&D DEPT	ENGINEER R&D DEPT	APPROVAL	DATE	Edition/Part number

ECN/ECR			



Index

- 1、 Cover
- 2、 Index
- 3、 Product Specification
- 4、 Test Equipment & Conditions
- 5、 Test Report
- 6、 Antenna Picture
- 7、 Transmission line Specification
- 8、 Product Drawing

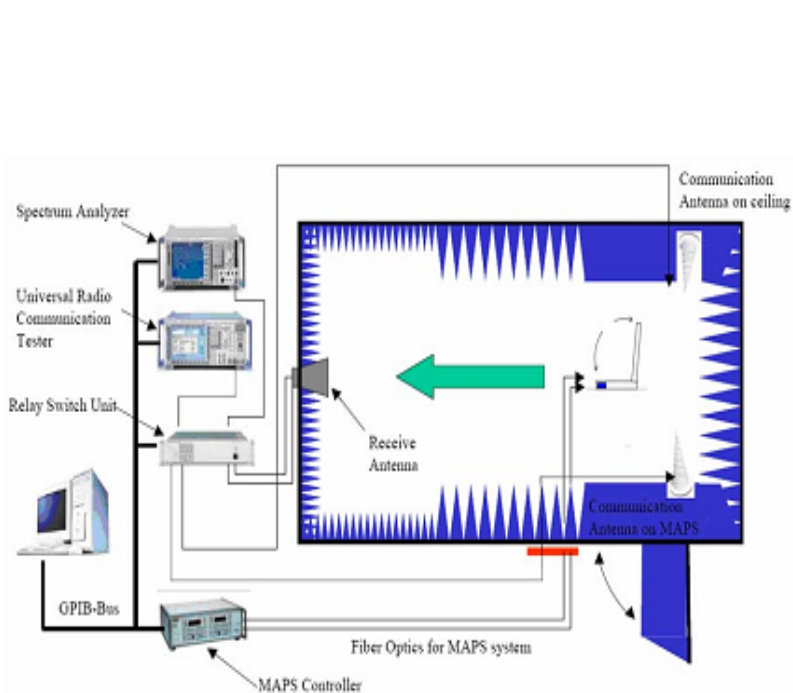
Electrical Characteristics

Frequency	VSWR	Efficiency	Impedance	Polarization	Gain
2400 MHz ~2500 MHz	<1.8	>30%	50 Ohm	Linear	$\geq 2\text{DB}$
5100MHz--5900 MHz	<2.5	>40%	50 Ohm	Linear	$\geq 3\text{DB}$

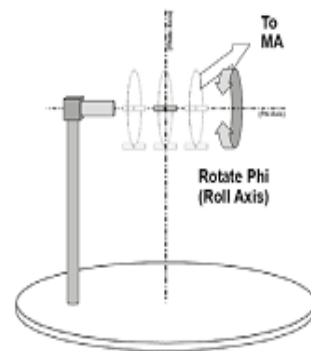
Material & Mechanical Characteristics				Environmental	
Material of Radiator	Cable Type	Connector Type	Dimension	Operation Temperature	Storage Temperature
BLACK	1.13	IPX1		- 20 °C ~ + 50 °C	- 30 °C ~ + 80 °C

4,Test Equipment & Conditions

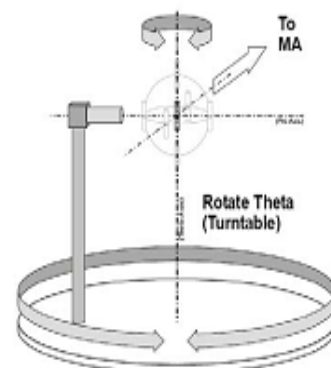
1. Network Analyzers :Agilent 8753SE 5071C
2. Communications Test Set:Agilent E5515C/CMW500
3. 3D Chamber Test System(ETS743)



(Testing by 3D anechoic chamber)

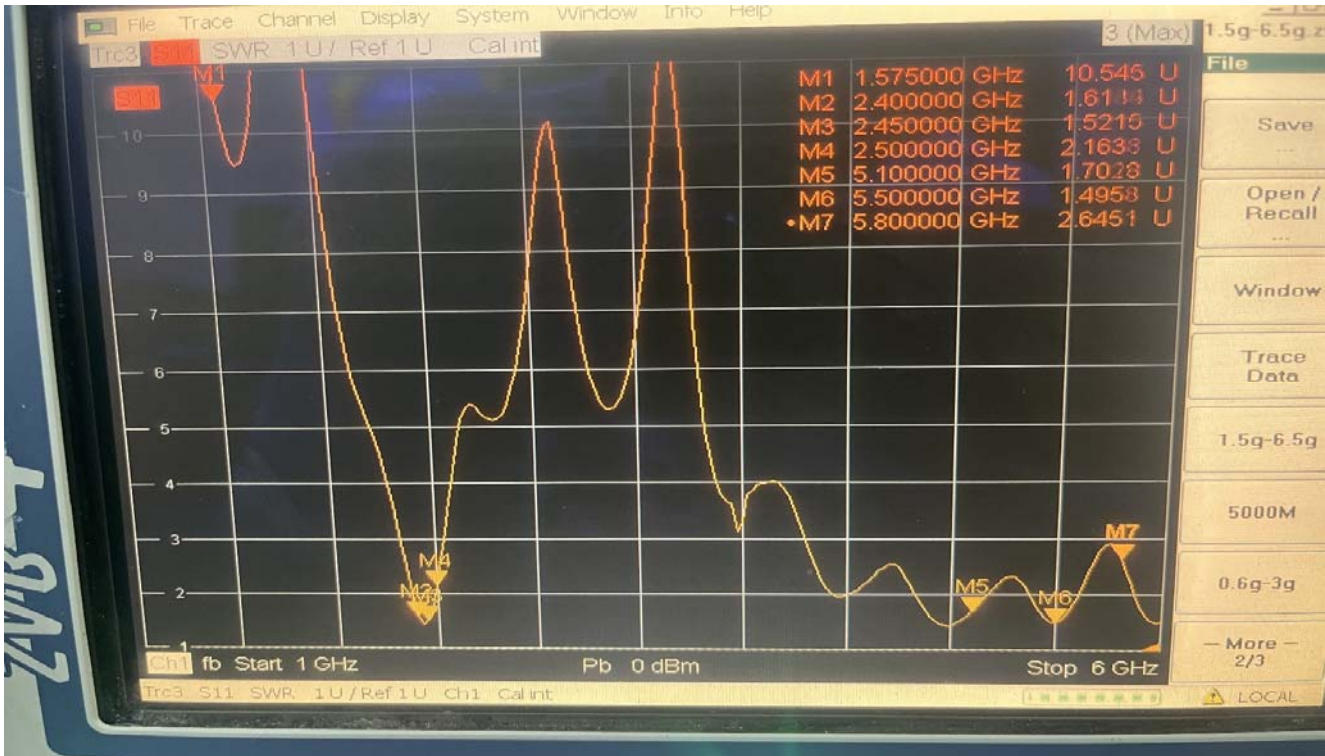


Phi axis test



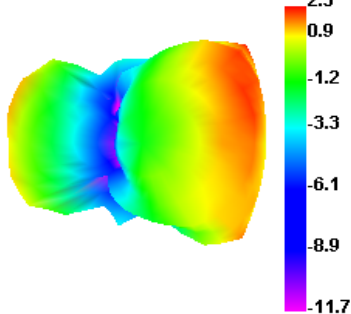
Theta axis test

5,Test Report : WIFI ANT M:

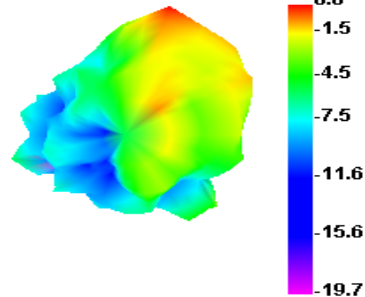


2.4G (WIFI/BT)	Freq (MHz)	2400	2410	2420	2430	2450	2460	2470	2480	2490	2500	
	Effi (%)	30.2	32.4	32.8	34.2	33.7	34.4	34.1	34.5	33.9	34.8	
	Gain (dBi)	1.6	2.2	2.1	1.99	2.2	1.2	1.7	1.9	2.8	2.7	
5G WIFI	Freq (MHz)	5150	5250	5350	5450	5550	5650	5750	5850	5950	6000	
	Effi (%)	41.2	40.2	42	43.5	42.5	44.1	44.6	42.2	41.6		
	Gain (dBi)	2.05	2.89	2.22	1.78	2.4	1.5	2.1	1.22	2.1		

2450.000MHz



5150.000MHz

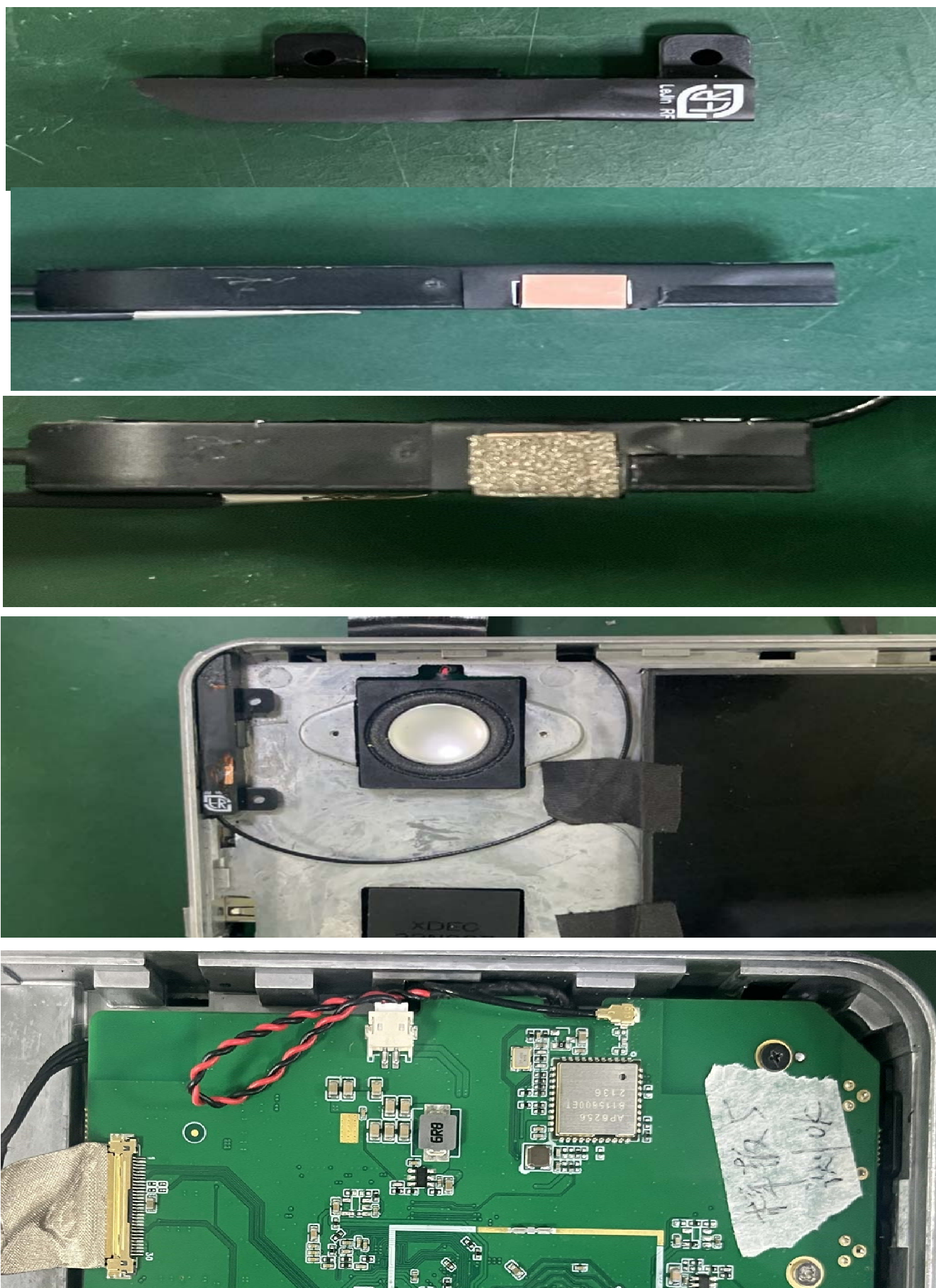


OTD_DATA:(The following OTD_DATA was tested by assembling the antenna according to the requirements of this specification. If the antenna is replaced or the installation method of the antenna is changed, the following OTD_DATA will become invalid. During the test, the BT needs to be turned off and the system should set the module to a non sleep state.)

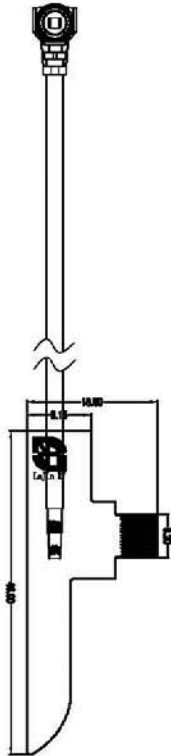
WIFI 2G	802.11B 11MB	
	TRP(dBm)	TIS(dBm)
CH1	9.5	-80.6
CH6	10.24	-81.9
CH11	10.82	-81.3

WIFI 5G	802.11A 54MB	
	TRP(dBm)	TIS(dBm)
CH36	13.22	-70.6
CH149	12.67	-67.5
CH161	13.32	-69

6, Antenna Picture



7&8, Transmission line Specification & Product Drawing



2, 2, 1

113Black
IPX1
180mm

		SHEN ZHEN LEJIN RADIO FREQUENCY CO., LTD	
	Third Angle	Project	JXX MHS
0~10	±0.05	Part Name	WIFI_ANT
10~18	±0.10	Part No.	
18~30	±0.12	Material	
30~40	±0.15	Treatment	LJF02-230726002-R0A
40~	±0.20	Unit	mm
Location	Angle	Approved by	Scale
	±0.5°		FIT
			Rev
			A
Date		2023-07-26	
Designed by			
Checked by			
MD			
RF			
Description		Rev	
1		A	