

## On/Off:

- Slide the switch to the right to turn on
- Switch<sup>2</sup> has a 15 minute auto shut-off feature. Press any button to wake from sleep mode
- The 3 LEDs on the back of the device indicate battery level. Pulsing lights indicate less than 10% remaining

## APP Connection - iOS:

- Download the Lablink Browser from [www.lablinkbrowser.com](http://www.lablinkbrowser.com)
- Make sure to allow any permission pop-ups during this process
- Copy the following link and paste it into the LabLink browser to access the web app: <https://drdabber.app/>
- Switch<sup>2</sup> must be powered on and nearby. Press "Launch" then select your device from the list. Perform any necessary firmware updates

## APP Connection - Android:

- Download the Dr.Dabber Sync app from the Google Play Store
- Make sure to allow any permission pop-ups during this process
- Switch<sup>2</sup> must be powered on and nearby. Press "Launch" then select your device from the list. Perform any necessary firmware updates

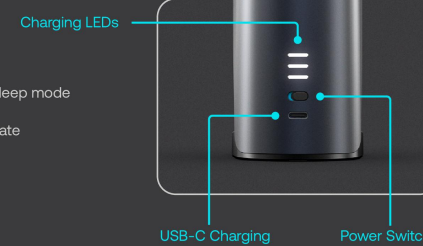
## Change Temperature Setting:

- Press the **+** button to increase temperature, and the **-** button to decrease temperature. The LEDs will change colors to indicate the selected temperature setting



## Activate Heating Cycle:

- Press the **⏻** button once to activate. The LEDs will pulse Red to indicate heating and Green when the Switch<sup>2</sup> reaches desired temperature
- Heating cycle can be cancelled at any time by pressing the button again
- 3 white flashes from the LED band indicate a low battery



Setting	Default Temperature (°F)	LED
Setting 1	400	Purple
Setting 2	440	Blue
⚡ Setting 3	480	Cyan
Setting 4	500	Orange
Setting 5	540	White

⚡ = The Default and Our Recommended Setting



## Charging:

- To charge, plug the charging cable into the device. The device can be used while charging. LEDs will pulse White while charging and turn solid when fully charged

## Getting Started

- Use the supplied charger to fully charge your Switch<sup>2</sup>
- Rest both hands on top of the crown and gently push upwards from the bottom of the glass attachment with your thumbs to remove. **Never pull up from the mouthpiece to remove the glass attachment as it can break and cause injury**
- Once the glass attachment is removed from the device, fill the attachment up to the top of the percolator puck with water. Filling lower than this point will affect vapor quality
- Gently push the glass attachment back down into place, ensuring that the markings on the attachment and the device are lined up. This will align the glass with the vapor pathway
- Lift off the magnetic carb cap and load your concentrate into the insert with the supplied Drop loading tool. It is very important to avoid putting the tip of the loading tool directly in the insert. Hover the loading tool above the insert and click the button to heat the concentrate on the tip and drop it into the insert. Do not scrape the tool on the edge of the insert as the electronics in Switch<sup>2</sup> can be damaged if the battery powered Drop comes in contact with the induction field
- Place the carb cap back on the insert to seal the induction well
- Your device is now ready to use! You can either use the +/- buttons on Switch<sup>2</sup> or the app to choose your temperature, then just hit the button to begin the heating cycle

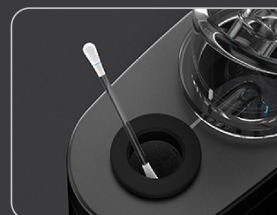
Push From Bottom



Alignment Lines

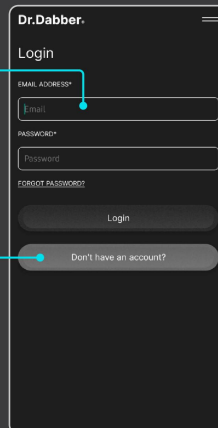
## Cleaning Tips

- We recommend swabbing your insert with Iso-Snaps or cotton swabs after every use for optimal flavor and longevity
- If you need to remove the insert for deeper cleaning, remove the glass attachment and set it down on a stable surface, then gently pry off the aluminum crown to reveal the induction well. Always use the supplied tweezers to remove the insert and be very careful when removing, as both the quartz and the sapphire inserts are very fragile and can break easily
- **Removing the insert is not required for regular maintenance and is only recommended when absolutely necessary. NEVER remove the insert when it is hot. Wait for the device to cool down after use before removing to avoid burns**
- We recommend using 99% isopropyl alcohol to clean the glass attachment. Ensure your attachment is thoroughly rinsed with clean water and refilled before using again
- Do **NOT** use isopropyl alcohol on the outer shell of Switch<sup>2</sup> as it will damage the Blue Onyx finish. If necessary, use a damp paper towel with a small amount of dish soap to wipe down the body, making sure to avoid water entering the charging port



Enter the same account details you use on drdabber.com

If you do not already have an account on drdabber.com, create an account to link your Switch<sup>2</sup>



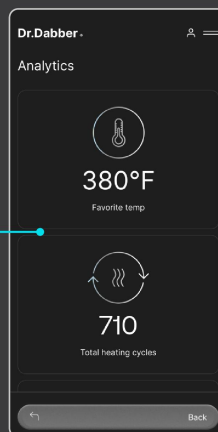
Tap here to access device settings

Tap here to access your analytics

Press to start a remote heating cycle

Use the plus and minus buttons to change temperature

This page will show all information about how you use your Switch<sup>2</sup>



Tap here to access your temperature presets

Tap here to choose Dynamic Heating mode

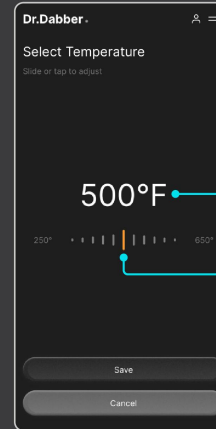
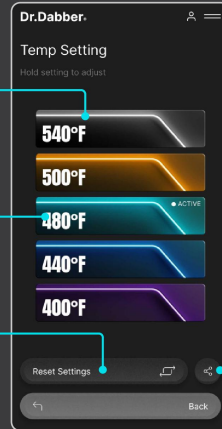


Tap to select heating profile

Press and hold to customize heating profile

Tap to reset your customized settings to default

Tap to generate a code to share your heating profile with friends or to enter a code you have received

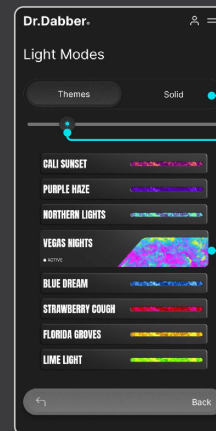
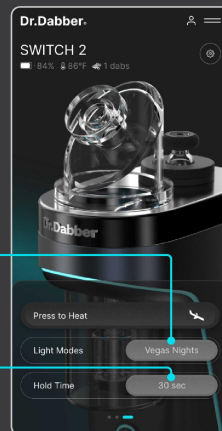


You can manually enter a temperature by tapping here

To customize a temperature preset, swipe left or right to adjust temperature, then click save

Tap here to choose your ambient light mode

Tap here to adjust the hold time of your Switch<sup>2</sup>



Tap here to access Solid colors

Slide left or right to change brightness. Slide all the way to the left to activate stealth mode

Tap any theme to change the lights on your Switch<sup>2</sup>





For more information go to: <https://drdabber.helpscoutdocs.com/article/126-switch2-knowledge-base>

