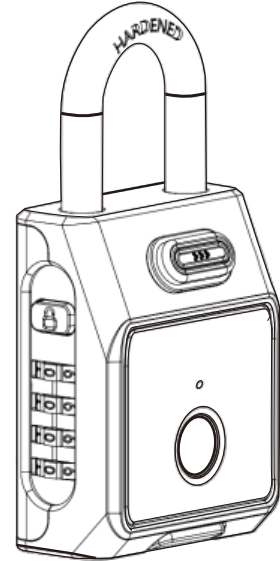


DYF-11蓝牙挂锁 (初稿) 使用说明书



感谢您购买本产品，使用前请仔细阅读说明书，并严格按照说明书操作使用，阅读后请妥善保管，以备日后查看。

温馨提示必读

- 未录指纹前任意指纹均可开锁，工作亮红灯；录指纹后仅录入的指纹可开锁，工作亮绿灯。
- 录指纹时同一手指可变换不同角度轻微小面积移动方向。
- 若开锁后红灯闪烁6秒，表示电量低，请及时充电，以免影响开锁。
- 请用配送的充电线充电，充电过程红灯常亮，充满后常亮绿灯。
- 若出现电量不足而无法开锁，可用外接移动电源充电30秒，便可开锁。
- 以下情况开锁请注意：1.洗手后要擦干；2.游泳后手指起皱，或因天气干燥指纹模糊，均需搓动手指以恢复指纹，方可开锁。

PS: 不建议录入模糊指纹或残缺指纹，以免录入失败或开锁失败。

产品参数及清单

序号	项 目	参 数	产 品 清 单	数 量
1	产品型号	DYF11	产 品 说 明 书	1
2	充 电	5V/200mA	Type-C 充 电 线	1
3	电池规格	3.7V~240mAh	U-key 解锁	1
4	静态电流	≤10uA		
5	驱动电压/电流	3.3V/100mA		
6	指纹采集时间	≤0.5秒		
7	低电量警告	电量<20%时LED灯闪烁发出响声		
8	工作温度	-20~55℃		
9	工作湿度	40~90%RH		
10	耐 震 击	≤5%		
11	认 错 率	<0.001%		
12	指纹识别	50组		
13	指 示 灯	有 (红、绿)		
14	声音提示	有		
15	锁体尺寸	长107.5*宽52*高29.5mm		
16	净 重	398g		

1

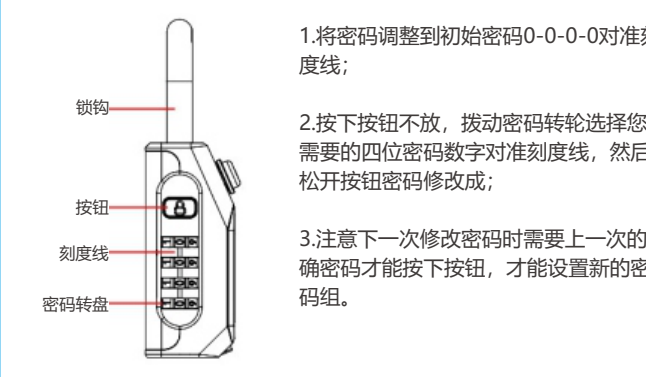
机械密码

A. 开锁方式



1. 拨动密码转盘，使正确的密码数字对应刻度线。
2. 按下按钮，锁钩自动弹出，即可完成开锁。

B. 修改密码



2

指纹密码

• 蓝牙开锁



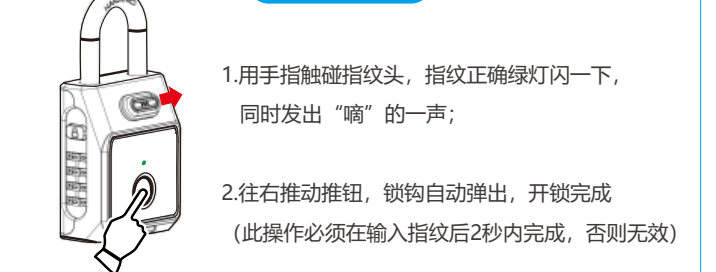
1. 打开手机蓝牙；
2. 在应用商店下载好涂鸦 APP，打开APP 登录账号；
3. 在首页点击“添加设备”
4. 点击“添加”，进入加载状态；
5. 加载结束后点击“完成”；
6. 进入主界面，向右滑动解锁键即可。

• 添加/删除指纹



3

• 手动开锁



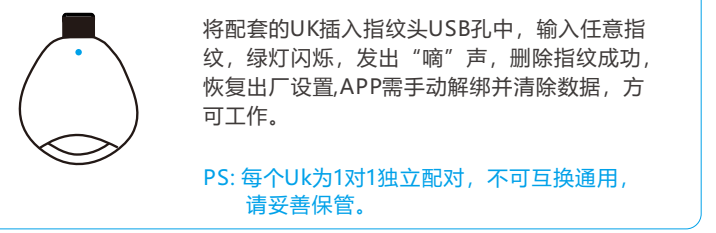
恢复出厂设置

方法一：手机APP清除数据



1. 点击主界面右上角的铅笔图标；
2. 点击“移除设备”
3. 点击解除并清除数据，即可恢复到初始状态。

方法二：U-key 解锁

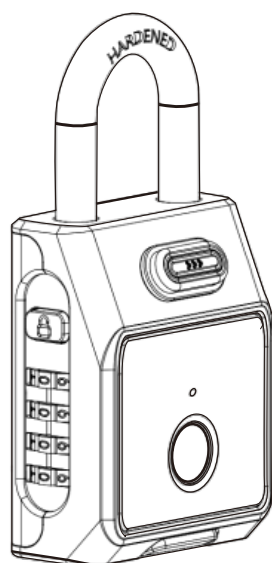


4



扫一扫
查看视频教程

Smart Padlock (Model No.: DYF11) MANUAL



Thanks for choosing our smart fingerprint lock. Please check the manual carefully before using, and following the operation of manual. Always keeping the manual.

Important Notice before use

- This product has no account status by default. It is ok to unlock by any finger before setting and the indicator will be red. It only can be unlocked using the recorded finger and the indicator light will be green.

- When recording the finger, please record it from different direction to ensure that all sensors are recorded.

- If the red indicator light flash for 6s after unlocking, it means that the battery is low and it should be charged.

- Please use the factory USB cable for charging, the indicator light will be red when charging and will turn green once full charged.

- If you cannot unlock it because of low voltage, please use the USB cable for emergency unlock.

- Unable to unlock:
1. Dry your finger when it is too wet.
2. Blow on your finger or rub it gently when it is too dry.
3. Keep your finger and fingerprint sensor are clean when unlock the padlock.

Note: Please don't use a fuzzy or incomplete finger as it may result in failure.

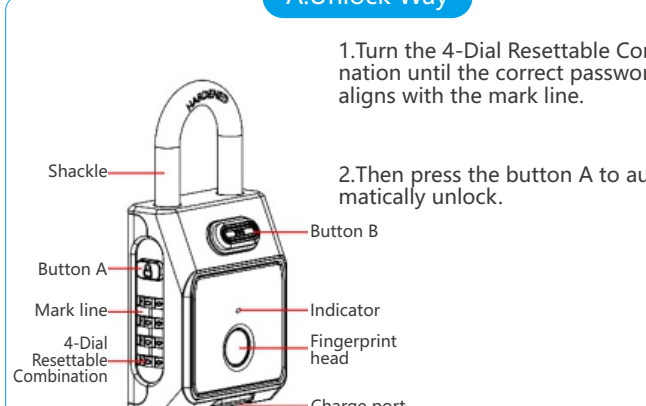
Product Parameter & List

No.	Item	Parameters	Produce List	Qty
1	Model No.	DYF11	Smart Padlock	1
2	Voltage/Current	5V/200mA	Manual	1
3	Battery	3.7V~240mAh	Type-C charge cable	1
4	Static Current	≤10uA	U-key delete	1
5	Drive voltage/current	3.3V/100mA		
6	Finger recording time	≤0.5s		
7	Low voltage alarm	Battery<20%, the red indicator light will flash for 6s with a "D" sound after unlock		
8	Working temperature	-20~55℃		
9	Working humidity	40~90%RH		
10	False rejection rate	≤5%		
11	False acceptance rate	<0.001%		
12	Fingerprint Capacity	50 sets		
13	Indicator light	Yes (Red, Green)		
14	Sound remind	Yes		
15	Lock body size	L107.5*W52*H29.5mm		
16	Net weight	398g		

1

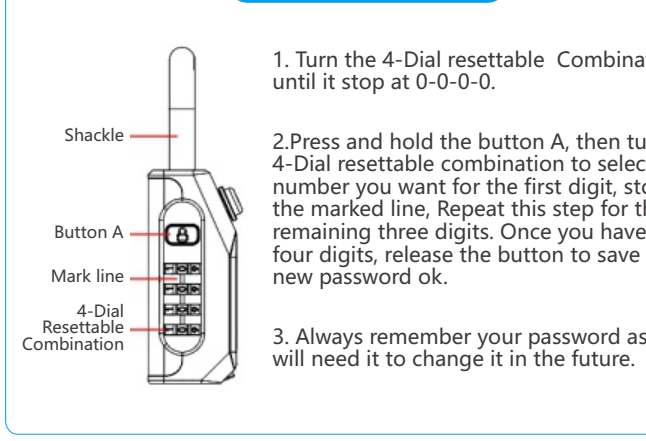
Password

A. Unlock Way



1. Turn the 4-Dial Resettable Combination until the correct password aligns with the mark line.
2. Then press the button A to automatically unlock.

B. Change password

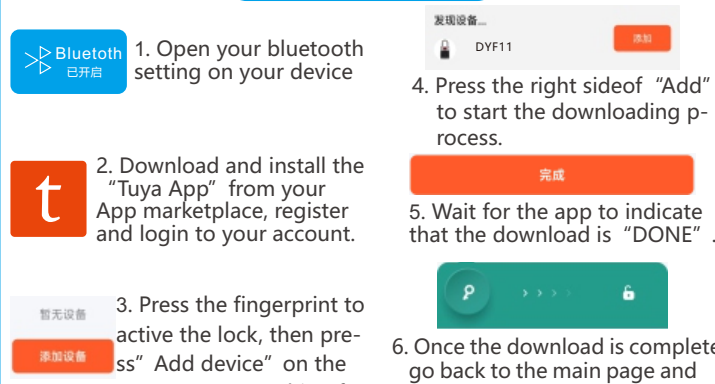


1. Turn the 4-Dial resettable Combination until it stop at 0-0-0-0.
2. Press and hold the button A, then turn the 4-Dial resettable combination to select the number you want for the first digit, stop at the marked line. Repeat this step for the remaining three digits. Once you have set all four digits, release the button to save the new password ok.
3. Always remember your password as you will need it to change it in the future.

2

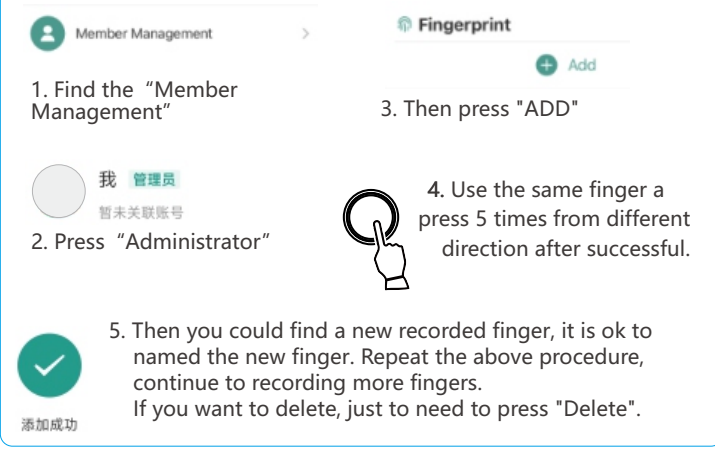
Fingerprint Unlock

• Bluetooth unlock



1. Open your bluetooth setting on your device
2. Download and install the "Tuya App" from your App marketplace, register and login to your account.
3. Press the fingerprint to activate the lock, then press "Add device" on the app to start searching for the device.
4. Press the right side of "Add" to start the downloading process.
5. Wait for the app to indicate that the download is "DONE".
6. Once the download is complete, go back to the main page and swipe your finger to unlock the device.

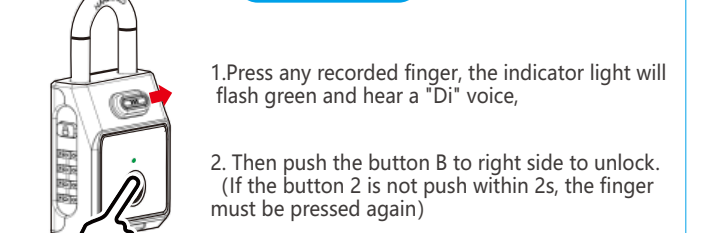
• Add/Delete fingerprint



1. Find the "Member Management"
2. Press "Administrator"
3. Then press "ADD"
4. Use the same finger a press 5 times from different direction after successful.
5. Then you could find a new recorded finger, it is ok to named the new finger. Repeat the above procedure, continue to recording more fingers. If you want to delete, just to need to press "Delete".

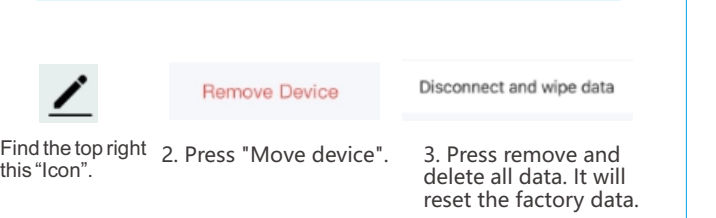
3

• Unlock



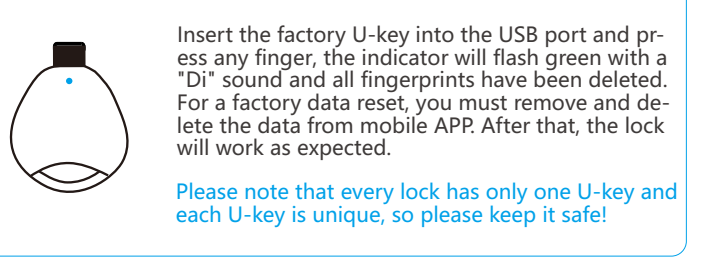
Factory Data Reset

1: Delete all the information from mobile APP



1. Find the top right this "Icon".
2. Press "Move device".
3. Press remove and delete all data. It will reset the factory data.

2: U-key delete



4

FCC Warning Statement

Changes or modifications not expressly approved by the party responsible for compliance could void the user's authority to operate the equipment. This equipment has been tested and found to comply with the limits for a Class B digital device, pursuant to Part 15 of the FCC Rules. These limits are designed to provide reasonable protection against harmful interference in a residential installation. This equipment generates uses and can radiate radio frequency energy and, if not installed and used in accordance with the instructions, may cause harmful interference to radio communications. However, there is no guarantee that interference will not occur in a particular installation. If this equipment does cause harmful interference to radio or television reception, which can be determined by turning the equipment off and on, the user is encouraged to try to correct the interference by one or more of the following measures:
-- Reorient or relocate the receiving antenna.
-- Increase the separation between the equipment and receiver.
-- Connect the equipment into an outlet on a circuit different from that to which the receiver is connected.
-- Consult the dealer or an experienced radio/TV technician for help.

FCC Radiation Exposure Statement
The device has been evaluated to meet general RF exposure requirement. The device can be used in portable exposure condition without restriction.

This device complies with Part 15 of the FCC Rules. Operation is subject to the following two conditions:
(1) This device may not cause harmful interference.
(2) This device must accept any interference received, including interference that may cause undesired operation.



Scan the code For checking the operate video, manual, and so on.

5