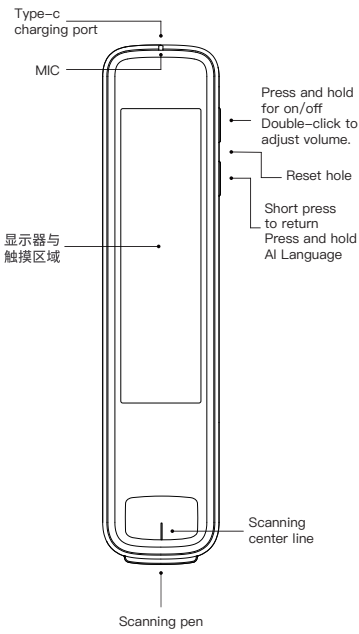


## Scan And Translate Dictionary Pen

### User guide manual



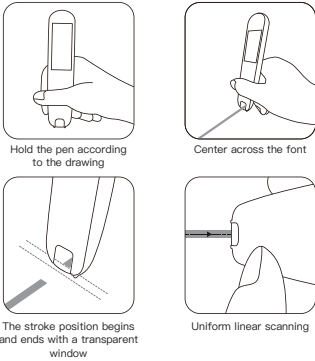
04.SMS.235

### Brief description

The scanning dictionary pen is a translation and learning product which integrates the functions of scanning translation, speech translation, electronic dictionary, oral evaluation, new words list, digital recording and collection of each module. Intelligent products based on dictionary, translation, voice, recording, fusion scanning, OCR text recognition, text translation and voice playback technology. Products support offline and online mode, just a simple sweep of words, you can easily realize pronunciation, English words, Chinese characters, word interpretation, translation, pronunciation, pen order and Tang poem inquiry and interpretation.

### Scanning operation

(1) During scanning operation, the device should be tilted 70-90 degrees from the plane, and the center line should be aligned with the text center line;  
(2) Press the pen, when the light starts to light, drag the scanning to the right at a constant speed, and keep the pen light steady on during the scanning process;  
(3) The center line is aligned with the blank space before the first text to start scanning, and then raise the pen after the center line has swept the last text;  
(4) View the results and click the screen to operate accordingly



### Offline use

This product supports offline use, can not be connected to the normal use of scanning dictionary and other functions. It is recommended to use the Internet first, and the effect is better.

### Scanning translation

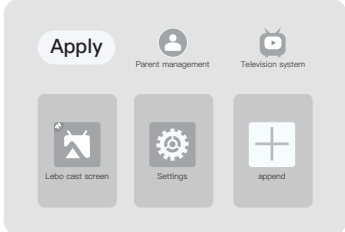
Chinese and English word scanning is supported. The device has a large number of words. If you need to scan multiple lines continuously, turn on the multi-line switch. (1) After scanning, the screen will automatically display the result. Click the word/text to view the details, click to join the vocabulary library for future review; 2) Clicking on the text has functions such as strokes, structure, interpretation, words, sentence making, and antonyms; (3) Click on English words with interpretation, example sentences, phrases, synonyms, antonyms, tenses, oral evaluation.

### Speech translation (Internet use)

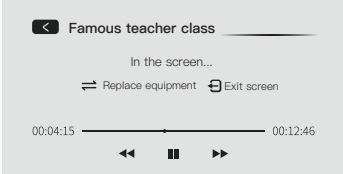
Support English and Chinese online voice translation. In the voice translation field, hit the translation point, and press the voice icon to speak Chinese and translate it into English automatically. Click English-Chinese translation and press the voice icon to say English industry. Automatic translation into Chinese. The screen automatically displays the results and announces them

### Screen projection function

Step 1: Set up the TV, find the Lebo projection screen in the application, and install. ((Download and install the screen projection function in the menu or app according to the difference of each TV, and the TV must support this function)



Step 2: The pen and the TV are connected to the same LAN WIFI.  
Step 3: The TV enters the Lebo projection application, waiting for the scanning pen to connect,  
Step 4: Scan the pen to enter the synchronous class application, play a video at will in the synchronous class, click the "TV" icon in the upper right corner to search for devices, and then click the device found to cast the screen. (Only support online playback, offline download video is not supported)



### Dictionary

English-chinese, Chinese-English, Chinese character, idiom dictionary. There are more than 1.5 million English and Chinese entries, which are collected and sorted according to the frequency of words appearing in all textbooks from primary school to university, and the meaning of words is listed according to the exam syllabus. More than 60,000 commonly used idioms are included, with detailed descriptions of allusions, which are suitable for intensive learning of primary and secondary school students and cover rich multi-attribute content. Each word is pronounced in English and American by a genuine foreign professional teacher. All words real pronunciation, common phrases collocation, a word multi-dimensional linkage, including the same/antonyms, tenses and other multi-dimensional entries.

### New words notebook

It is used to collect and keep records of new words and difficult words in Chinese and English, which is convenient for users to check and review.  
(1) In the scanning translation interface, click the five-pointed star icon to save the Chinese and English words that have been scanned.  
(2) Click the Favorites icon to enter the interface.  
(3) Select English/Language to view the vocabulary that has been collected.

### Scanning translation

Chinese and English word scanning is supported. The device has a large number of words. If you need to scan multiple lines continuously, turn on the multi-line switch. (1) After scanning, the screen will automatically display the result. Click the word/text to view the details, click to join the vocabulary library for future review; 2) Clicking on the text has functions such as strokes, structure, interpretation, words, sentence making, and antonyms; (3) Click on English words with interpretation, example sentences, phrases, synonyms, antonyms, tenses, oral evaluation.

### Rear camera

Rear camera, photo and album integration. Post photo search function, answer more easily.

### Scanning precautions

Hold the pen in the left/right hand, scan the window across the word, the front font of the word is facing the center line of the scanning window, gently press the tip of the scanning pen, paste the paper surface, and move the pen evenly from left to right along the horizontal direction of the word line after the scanning light is on. Note: This product supports left/right pen holding direction can be switched in the Settings. The top of the device screen displays some status information about the device, such as WIFI connection status, power, charging status, etc. Main Functions: On the home screen, if you press the pen tip to scan, the dictionary scanning function is automatically used by default.

### Packing list

The name of a product or commodity	quantity
Dictionary pen	A piece of
Data cable	A strip of
specification	A portion

### FCC warning

This device complies with part 15 of the FCC Rules. Operation is subject to the following two conditions:  
(1) this device may not cause harmful interference, and  
(2) this device must accept any interference received, including interference that may cause undesired operation.

Any changes or modifications not expressly approved by the party responsible for compliance could void the user's authority to operate the equipment. NOTE: This equipment has been tested and found to comply with the limits for a Class B digital device, pursuant to Part 15 of the FCC Rules. These limits are designed to provide reasonable protection against harmful interference in a residential installation. This equipment generates, uses and can radiate radio frequency energy and, if not installed and used in accordance with the instructions, may cause harmful interference to radio communications. However, there is no guarantee that interference will not occur in a particular installation.

If this equipment does cause harmful interference to radio or television reception, which can be determined by turning the equipment off and on, the user is encouraged to try to correct the interference by one or more of the following measures: Reorient or relocate the receiving antenna. Increase the separation between the equipment and receiver.

Connect the equipment into an outlet on a circuit different from that to which the receiver is connected. Consult the dealer or an experienced radio/TV technician for help. The device has been evaluated to meet general RF exposure requirement. The device can be used in portable exposure condition without restriction

### Harmful substances in products

Part name	(Pb)	(Hg)	(Cd)
megaphone	○	○	○
antenna	○	○	○
Display screen	○	○	○
Battery module	×	○	○
Shell assembly	○	○	○
Board assembly	×	○	○

Part name	(Cr(VI))	(PBB)	(PBDE)
megaphone	○	○	○
antenna	○	○	○
Display screen	○	○	○
Battery module	○	○	○
Shell assembly	○	○	○
Board assembly	○	○	○

This form is prepared in accordance with the provisions of SJ/T11364. Note: The parts marked "X" in the table cannot be fully lead-free due to the current technical development level of the industry.  
X : indicates that the content of the toxic and harmful substances in all homogeneous materials of the part is below the limit requirements specified in GB/T26572.  
○ : indicates that the content of the toxic and hazardous substance in at least one homogeneous material of the part exceeds the limit requirements specified in GB/T26572, and there is no mature alternative in the industry to meet the environmental requirements of the EU ROHS Directive.

### System setting

1. WLAN: configure the WIFI network of the device, the device please give priority to network use, the effect will be better; (Note: This device only supports 2.4GHz band WIFI)  
2. Bluetooth: Connect Bluetooth headphones, Bluetooth speakers and other audio devices)  
3. brightness adjustment: screen brightness intensity adjustment;  
4. System update: Detect whether there is an updated software version and update it.  
5. About the machine: view the current device model, SN number, software version and other information.  
6. holding the pen direction: you can choose left/right hand holding the pen according to the habit.

### Matters needing attention

1, when the device is upgraded, do not perform any operation during the process of program download and automatic program installation and restart.  
2. When translating speech, the distance between the mouth and the MIC of the device is within 30CM.  
3, please speak coherently at a normal speed, do not pause many times in the speech process, the above situation is easy to cause inaccurate translation.  
4, please try to pronounce standard, do not use catchphrases or slang.  
5, through the screen display text to verify the recognition results, such as errors can be manually input editing.  
6, if you say the word recognition is correct, but the translation is not accurate, please change the expression.

### Matters needing attention

Forced shutdown: When the device fails to shut down or crashes, poke the reset hole with a needle.

### Warn

1, do not use this equipment in gas stations, fuel depots and other places where electronic equipment is prohibited, otherwise it may cause explosion or fire.  
2, please do not use unauthorized or incompatible power supplies, chargers, may cause fire, explosion or other dangers.  
3, when charging is complete or not charging, please disconnect the charger from the device and unplug the charger from the power socket.  
4. It is strictly prohibited to place the equipment in an environment where the temperature is too high or too low to avoid fire, explosion or product failure. Do not put the device near the heat source such as oven, heater, etc., and do not put it into the fire. Lithium batteries must not be exposed to conditions such as sunlight, fire, or similar overheating.  
5, do not let children or pets swallow the equipment or its accessories, so as not to cause harm to it.

### Disclaimer clause

1. Please read the product manual carefully before use and operate in strict accordance with the contents of the manual.  
2. This product is not responsible for the translation results.  
3, this product is not waterproof, because the water problem caused by the machine damage  
The user assumes responsibility.

3, During the warranty period, the following circumstances do not belong to the free warranty scope:  
(1) Cannot provide warranty certificate and valid purchase certificate.  
(2) Unauthorized maintenance, misuse, collision, negligence, abuse, accident, incorrect use of this product, etc  
(3) Because of long-term exposure to strong light, fire or similar overheating environment.  
(4) Machine damage or performance failure caused by human factors such as water.  
(5) The loss caused by the use of unqualified power supplies exceeding 5V=2A or more.  
(6) The Company shall not be liable for any special, incidental or indirect loss and damage.

### Warranty certificate

Product name: \_\_\_\_\_  
Product model: \_\_\_\_\_  
Factory number: \_\_\_\_\_  
Factory date: \_\_\_\_New\_\_\_\_ month\_\_\_\_ Day (subject to debugging and acceptance)  
Customer name: \_\_\_\_\_  
Contact number: \_\_\_\_\_  
Customer address: \_\_\_\_\_  
Warranty content: \_\_\_\_\_, After sale: \_\_\_\_\_  
customer signature: \_\_\_\_\_ ☐ satisfaction ☐ dissatisfy

### Please read carefully before operation

★ Before using this product, please read this manual carefully and operate and use this product correctly according to the manual;  
★ Please keep this manual safe for future reference.



### Scan test file



### Please scan the text below, appendix for testing the scanning text:

More than just a pen

超越您想象的一支笔

ماتق درجہ ہم رشتہ

มากกว่าธรรมดา

lebih daripada sebarang pen

超越您想象的一支筆

lebin dari sekedar pena

### English sentence

Love and a cough cannot be hid.

In love folly is always sweet.

Life is a festival only to the wise.

Love makes the world go round.

You had me at Hello.

Stop worrying so much.

外贸版 折页说明书  
52x130mm 105克铜版纸  
黑白印刷