

# uFR Zero Online Tester User Manual

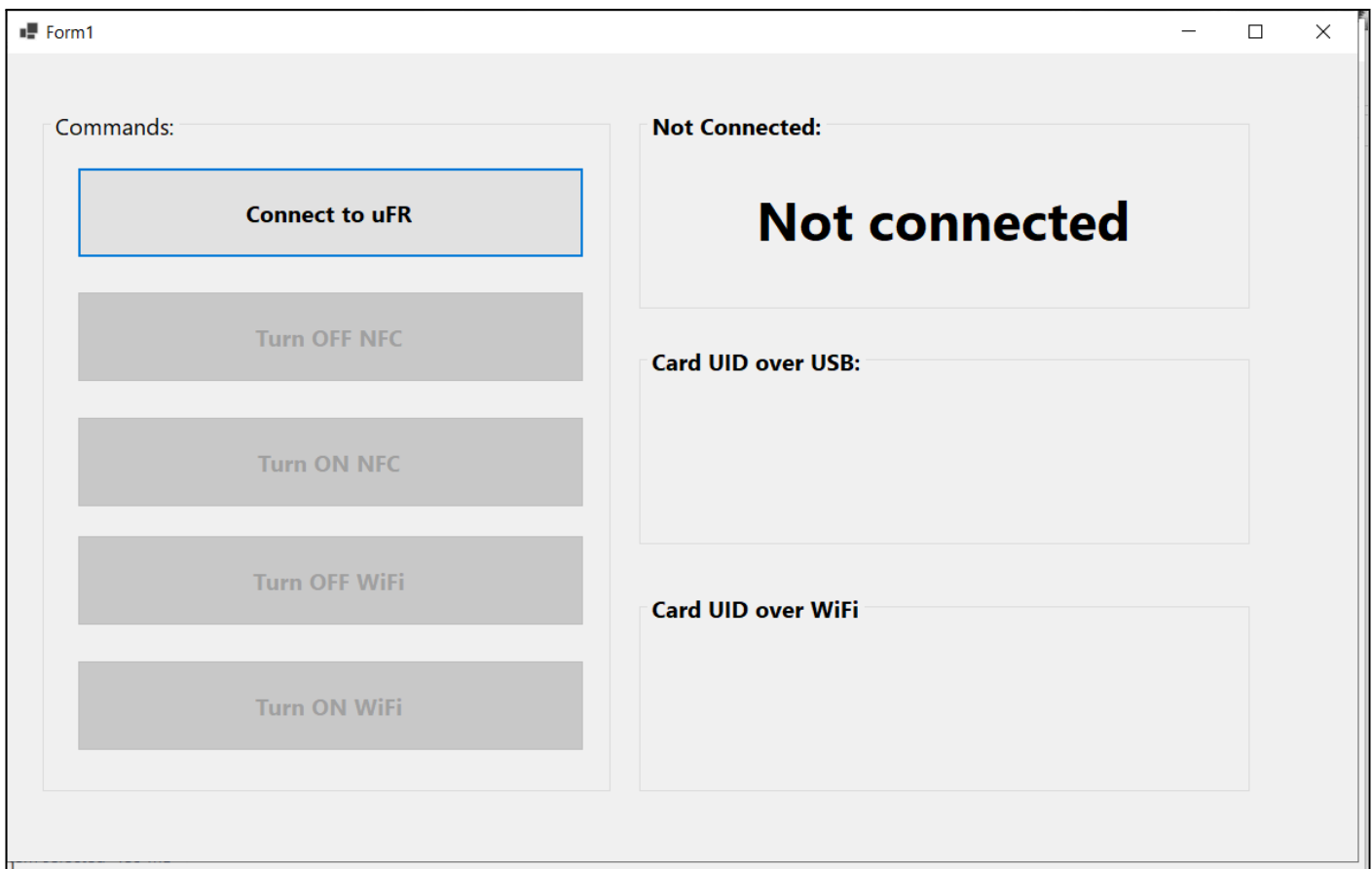
## v1.0

# Table of contents

<b>Introduction</b>	<b>3</b>
<b>Connecting the Device</b>	<b>4</b>
<b>Testing NFC and WiFi Capabilities</b>	<b>5</b>
<b>Turning Off WiFi or NFC</b>	<b>6</b>
<b>Turning On WiFi or NFC</b>	<b>7</b>
<b>Troubleshooting</b>	<b>8</b>
<b>Revision history</b>	<b>9</b>

## Introduction

The uFR Zero Online Tester software is designed to evaluate the WiFi and NFC functionalities of the uFR Zero Online device. It provides options to enable or disable WiFi and the NFC field, as well as to check the NFC card's UID through polling over USB and WiFi.



Form1

Commands:

Connect to uFR

Turn OFF NFC

Turn ON NFC

Turn OFF WiFi

Turn ON WiFi

Not Connected:

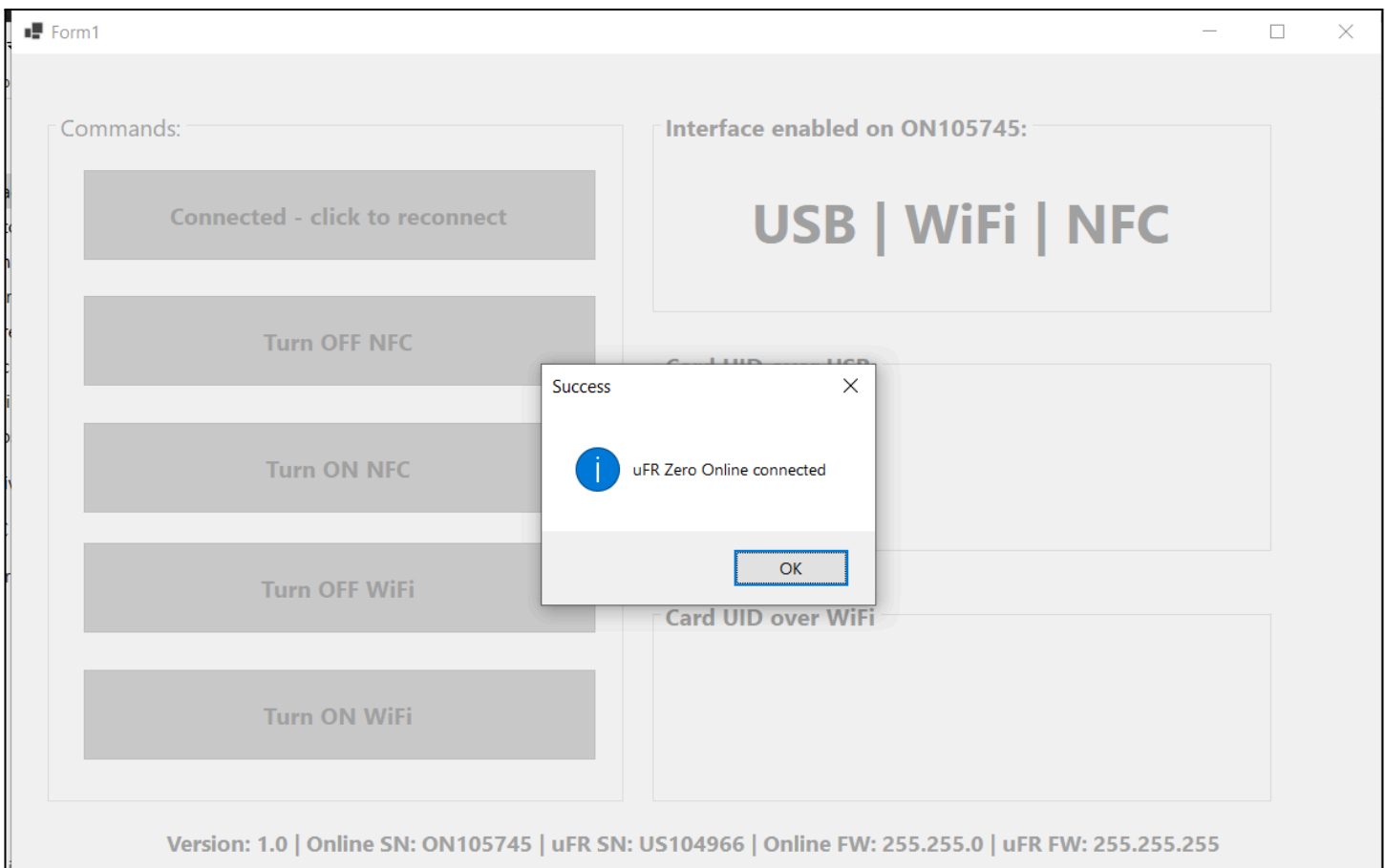
**Not connected**

Card UID over USB:

Card UID over WiFi:

## Connecting the Device

To begin using the uFR Zero Online Tester, first connect the uFR Zero Online device to your computer via USB. Once the connection is established, click the "Connect to uFR" button in the software interface. This will initiate the communication between the software and the device, allowing you to proceed with testing its WiFi and NFC capabilities.



If the device successfully connects, a confirmation message will appear, as shown in the image above. If you encounter any errors during the connection process, please refer to the [Troubleshoot](#) section for guidance on resolving common issues.

## Testing NFC and WiFi Capabilities

To test the NFC and WiFi functions, place an NFC card on the reader. The card's UID should be displayed in both the "Card UID over USB" and "Card UID over WiFi" sections of the software. This confirms that the device is correctly reading the NFC card through both communication methods.

The screenshot shows a software window titled "Form1" with a light gray background. On the left, under the heading "Commands:", there are five buttons: "Connected - click to reconnect" (highlighted with a blue border), "Turn OFF NFC" (in red text), "Turn ON NFC" (in gray text), "Turn OFF WiFi" (in red text), and "Turn ON WiFi" (in gray text). On the right, under the heading "Interface enabled on ON105745:", there are two sections. The first, "Card UID over USB:", displays the UID "04:B7:05:02:E5:3F:84" in large green text, followed by a vertical green bar. The second, "Card UID over WiFi:", also displays the same UID "04:B7:05:02:E5:3F:84" in large green text, followed by a vertical green bar. At the bottom of the window, a status bar shows: "Version: 1.0 | Online SN: ON105745 | uFR SN: US104966 | Online FW: 255.255.0 | uFR FW: 255.255.255".

Form1

Commands:

Connected - click to reconnect

Turn OFF NFC

Turn ON NFC

Turn OFF WiFi

Turn ON WiFi

Interface enabled on ON105745:

**USB | WiFi | NFC**

Card UID over USB:

**04:B7:05:02:E5:3F:84**

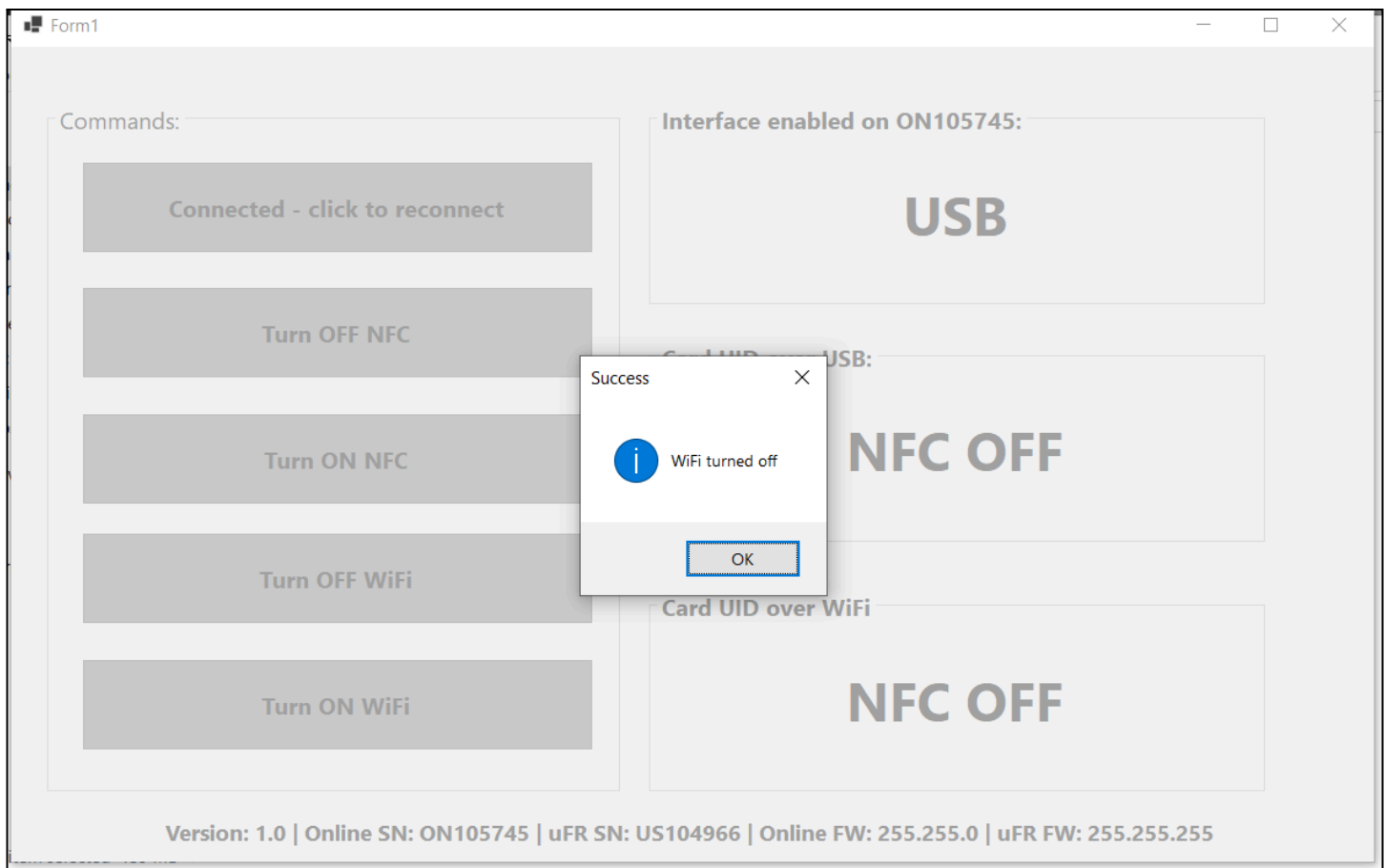
Card UID over WiFi:

**04:B7:05:02:E5:3F:84**

Version: 1.0 | Online SN: ON105745 | uFR SN: US104966 | Online FW: 255.255.0 | uFR FW: 255.255.255

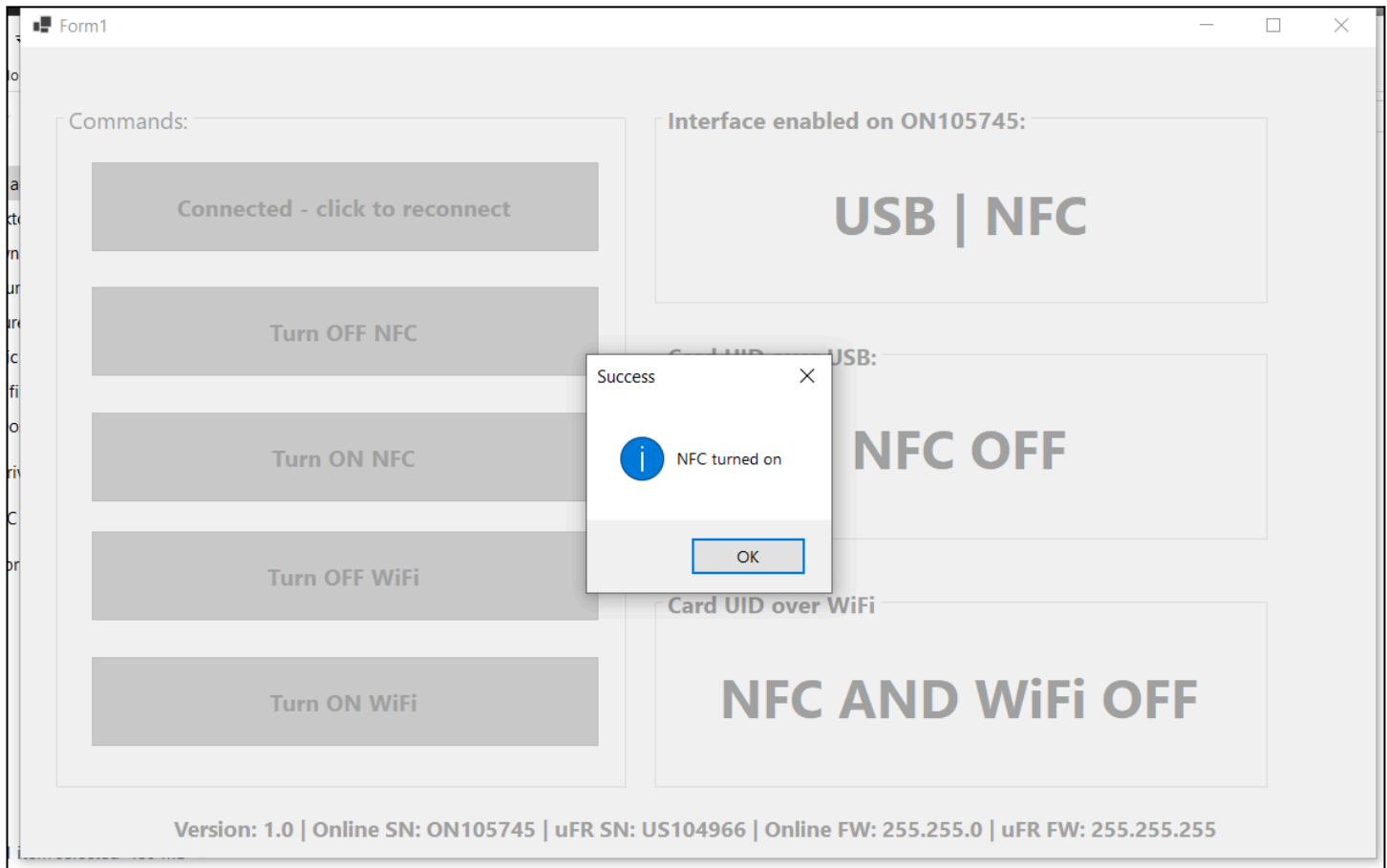
## Turning Off WiFi or NFC

If you need to turn off WiFi or NFC, simply click the "Turn OFF WiFi" or "Turn OFF NFC" button in the software. A confirmation message will appear, indicating that the WiFi or NFC has been successfully disabled.



## Turning On WiFi or NFC

If you need to turn on WiFi or NFC, simply click the "Turn ON WiFi" or "Turn ON NFC" button in the software. A confirmation message will appear, indicating that the WiFi or NFC has been successfully enabled.

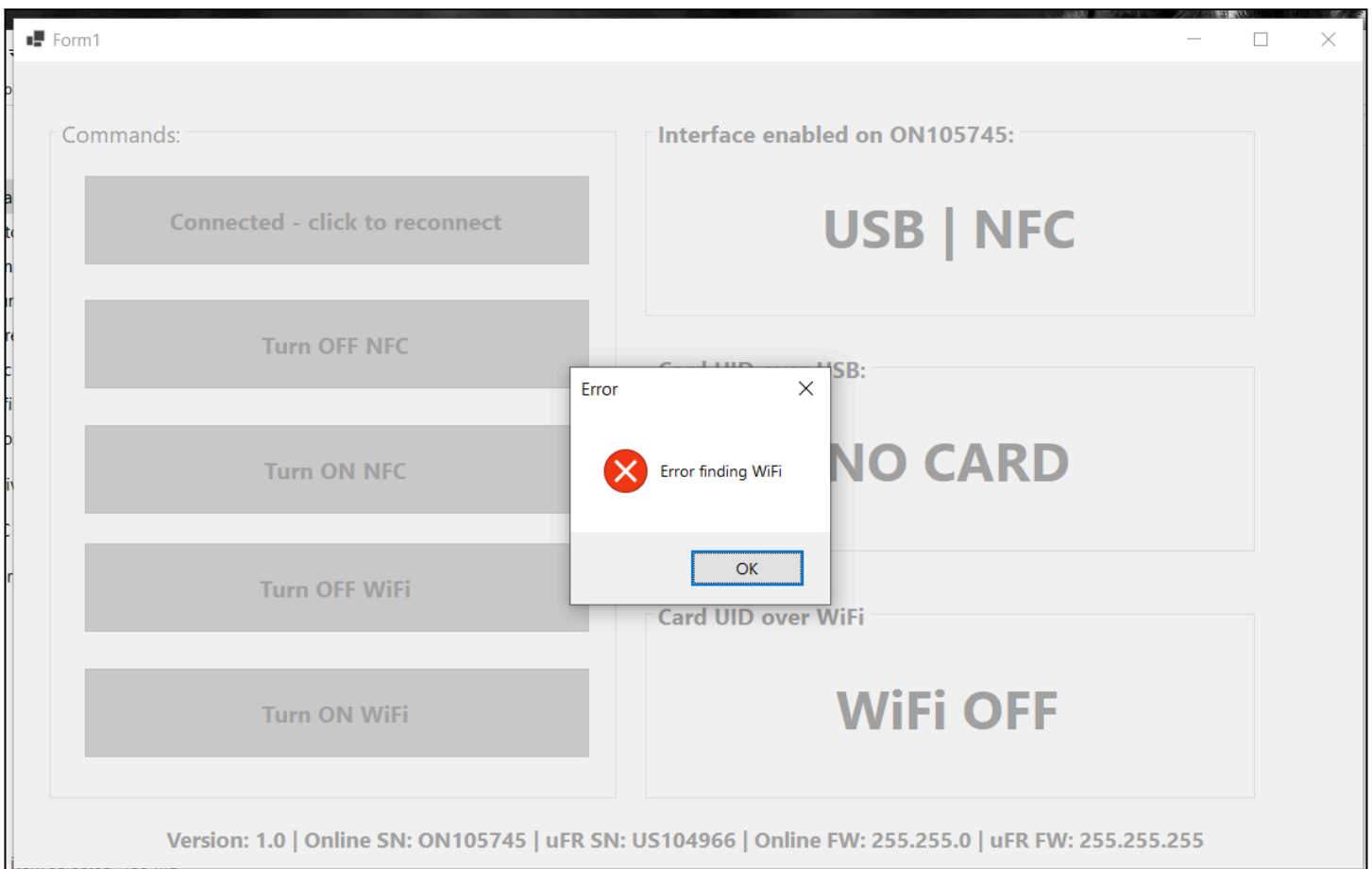


## Troubleshooting

If you encounter a WiFi error during device connection, as shown in the image below, try the following steps:

1. Open the WiFi options in Windows and search for a device named "ONxxxxxx."
2. Attempt to connect to this device. It should appear as a WiFi network.

This process will help establish a proper connection to the uFR Zero Online device via WiFi.





## Revision history

Date	Version	Comment
2024-07-29	1.0	Base document

## FCC Warning

Caution: Any changes or modifications not expressly approved by the party responsible for compliance could void the user's authority to operate this device.

This device complies with Part 15 of the FCC Rules. Operation is subject to the following two conditions:

- (1) This device may not cause harmful interference, and
- (2) this device must accept any interference received, including interference that may cause undesired operation.

Note: This device has been tested and found to comply with the limits for a Class B digital device, according to part 15 of the FCC Rules. These limits are designed to provide reasonable protection against harmful interference in a residential installation. This device generates, uses, and can radiate radio frequency energy and, if not installed and used following the instructions, may cause harmful interference to radio communications. However, there is no guarantee that interference will not occur in a particular installation.

If this device does cause harmful interference to radio or television reception, which can be determined by turning the device off and on, the user is encouraged to try to correct the interference by one or more of the following measures:

- Reorient or relocate the receiving antenna.
- Increase the separation between the device and receiver.
- Connect the device to an outlet on a circuit different from that to which the receiver is connected.
- Consult the dealer or an experienced radio/TV technician for help.

### Radiation Exposure Statement

This device complies with FCC radiation exposure limits set forth for an uncontrolled environment. This device should be installed and operated with a minimum distance of 20cm between the radiator and your body.