

感谢您购买本产品,在使用之前请仔细阅读本说明书。

温馨提示

- 1. 请在使用前确保产品电量是充足的。
- 2. 建议您使用温水和抗菌肥皂清洗,切不可使用含有酒精,汽油或丙酮类的化工品清洗本品。
- 3. 建议使用水性润滑液,切不可使用按摩油、手霜和其他形式的润滑剂。

规格

名称:APP遥控充电震动乳夹
功能:刺激和按摩
主体材质:硅胶、ABS
尺寸:71×63×24mm
震动模式:9种震动模式, 蓝牙音乐震动模式
噪音指数:≤45dB
防水性能:IPX-4
电池类型:内置锂电池
充电时间:3小时
充电周期:500次
待机时间:3个月
输入电压:5V 500mA
执行标准:Q/LY003-2015

使用说明书

操控玩具

- 1. 登录APP后,进入“首页”界面。
- 2. 允许“Love Spouse”开启手机蓝牙功能,打开您的玩具。
- 3. 点击“+”号选择玩具种类,如:蛋或棒,或扫描设备二维码。



- 4. 根据您的玩具种类,点击桌面图标,会出现正在搜索设备,然后进入玩具操控界面。

经典模式

单独震动的玩具,请在“经典模式”下操控玩具,该模式提供9种不同的频率。任意点击一个震动频率的图标,则玩具以该频率震动。再次点击相同图标,玩具关闭震动进入待机状态。点击不同图标,则玩具切换不同频率。点击“独立震动模式”则无法操控玩具。

独立震动模式

双头震动的玩具,请“独立震动模式”都可操控玩具。“独立震动模式”下提供了18种频率,上面9个模式控制一组震动设备,下面9个模式控制另外一组震动设备,操控方式与“经典模式”相同。

注意:如果玩具带有加热功能,点击右上角的加热图标,玩具会开启加热功能,同时图标颜色会变成红色。再次点击加热图标,玩具会停止加热功能,同时图标颜色会变回白色。(仅限带有“加热”功能的玩具)

音乐模式

选择音乐模式,进入音乐模式界面(注:IOS手机界面与Android手机界面不一样)。

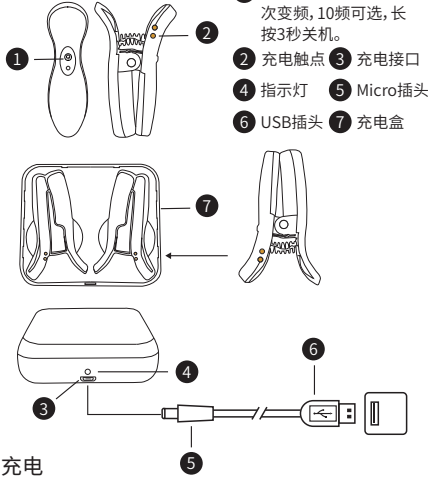
A: IOS系统界面,点击播放键,玩具会随音乐节奏而震动。点击暂停键音乐停止,震动也停止。退出音乐模式,玩具停止震动。(注意:由于苹果手机的后台机制,返回桌面和自动黑屏,玩具都会自动停止震动,另外苹果手机除了三首自带音乐,添加新音乐需要下载到iTunes里面,则会在列表中自动显示。)

B: Android系统界面,选择要打开的音乐播放器(手机自带的或其他的音乐播放器),播放喜欢的音乐后玩具会随音乐节奏而震动。点击波形图,玩具停止震动;再次点击玩具恢复震动。退出音乐模式,玩具停止震动。(注意:只要不退出音乐模式,手机可以正常操作,玩具会随音乐频率震动。)

摇一摇

- 1. 选择摇一摇模式,进入摇一摇界面。
- 2. 摇一摇手机,玩具震动。

使用说明



充电

在使用前,请先充满电,将Micro插头⑤接上充电接口③,充电时指示灯闪烁,充电完成指示灯停止闪烁。将夹子放在充电盒⑦自动充电,充电时指示灯闪烁,充电完成指示灯熄灭。请使用5V/500mA的USB充电器或者直接连到电脑USB接口充电。(注意:充电期间按摩器不能使用)

APP连接使用

互动模式

- 1. 点击“互动”后,进入“联系人”界面。
- 2. 如何加好友,点击“+好友”,进入添加好友界面,输入你想加好友的ID号/昵称/手机号/邮箱后,点击“查找”按钮,找到好友后点击添加。
- 3. 对方收到您的加好友请求后,点击“消息”按钮进入消息列表,展开消息同意添加您为好友,则交友成功。
- 4. 在“联系人”点好友头像,出现互动邀请对话框后,点击确定;对方同意后进入“互动界面”后,点击右上角 图标连接玩具。玩具连接成功后,对方可以操控我方的玩具,我方无法操控自己的玩具。
- 5 点击“邀请对方视频”进入房间后,对方收到邀请,点击的“确认开启视频”,双方开始视频。
- 6. 点击“互动界面”的左上角“关闭”按键,则退出“互动模式”,返回到“联系人”界面。



长按开关按键两秒,可以开机或关机;按压+键或者-键,可以切换震动频率

下载和安装APP

Ios系统 (苹果系列手机)

- 1. 在App Store里面搜索“Love Spouse”,下载安装。(英文版本需手机系统语言为英文,在App Store里面搜索“Love Spouse”,下载安装)。
- 2. 用手机扫描下面的二维码,按提示下载安装“Love Spouse”APP。
- 3. 下载网址: <http://app.lealso.com/>



清洁和护理

- 1. 使用后应及时清洗,以避免细菌滋生。
- 2. 用温水和除菌类清洗主要部位。
- 3. 用棉、麻类的干净布或毛巾将表面水渍吸干,并将其保存在袋内,置于无尘环境中。
- 4. 请勿将产品置于高温环境下,避免阳光暴晒。

安全的建议

- 1. 请不要持续充电超过24小时。
- 2. 本产品属于个人卫生用品,不可能多人混用,以免感染。
- 3. 为了避免受伤,推荐配合水性润滑液或安全套进行体验。
- 4. 请选择自己最合适的震动模式。
- 5. 它是多速的,适合不同的人,如果你感觉不舒服或过敏,请立即停止使用。
- 6. 请将产品远离在孩子和宠物能触及的区域。

警告:本品仅供成年人使用,18岁以下人士请勿购买。

售后服务

- 1. 所有产品配有精美包装,充电线,说明书。
- 2. 所有产品有一年保修期,人为原因损坏不在担保范围内。

售后服务

由于成人用品的特殊性,一旦使用就无法退换,所以在使用之前请务必检查好产品外观和功能。感谢您的支持。



User Manual

We thank you for purchasing our products. Please read this manual carefully before use.

Cautions

1. Please ensure your massager is fully charged before use.
2. Please ensure you wash/disinfect your massager with antibacterial soap and warm water.
3. Please ensure that you use water based lubricant. Massage oils, hand cream and other forms of lubricant should never be used.

Specifications

Name: APP remote control charging vibrating breast clip

Function: Stimulator and Massager

Material: Silicone and ABS

Size: 71×63×24mm

Vibration mode: 9 vibration pattern, Bluetooth music vibration

Noise figure: ≤45dB

Waterproof grade: IPX-4

Battery type: Lithium battery

Charging time: 3 hours

Charging cycles: 500 times

Standby: 3 months

Input voltage: 5V ~ 500mA

Executive standard: Q/LY003-2015

How to play

1. After logging in the app, enter the "Homepage" interface.
2. Allowing "Love Spouse" App to turn on function of mobile phone and turn on your toys.
3. Click "+" to select toys type, e.g.: vibrator or vibrating egg, or scan device QR code.



4. According to your toys type, click the desktop icon and show "Connecting devices" to enter toys control interface.

Classic

Vibrates singly toys (one motor), please control the toys in "Classic" mode, which provides 9 different frequencies. Click any icon of vibration frequency, the toys will vibrate at that frequency. Click the same icon again, the toys will turn off vibration and enter standby mode. Click on different icons, the toy will switch to different frequencies. "Solitary" mode can't control single motor product.

Solitary

Dual-vibrates toys (two motors), please control the toys in "Solitary" mode. There are 18 frequencies. The above 9 modes control one group of vibration devices, and the following 9 modes control another group of vibration devices, and the control way is the same as "Classic" mode.

(only for toys with "independent vibration mode" function)

Note: If the toy is with heating function, click the heating icon in the upper right corner, the toy will turn on the heating function, and the icon color will turn red. Click the heating icon again, the product will stop heating function, and the icon color will change back to white. (only for toys with "heating" function)

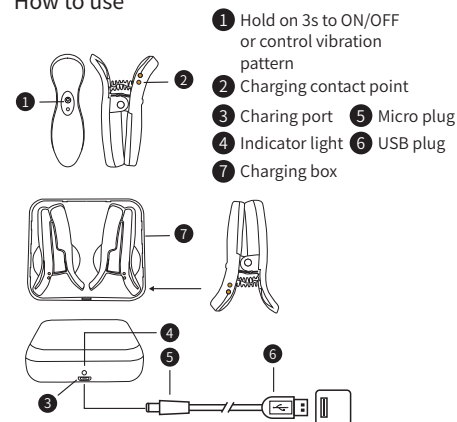
Music

Click "Music" tab to enter the music mode interface. (Note: IOS mobile interface is different from Android mobile interface)

A: IOS system interface, click the play button, the toy will vibrate with the music rhythm. Click the pause button to stop the music and the vibration. Exit the music mode, and the toy stops vibrating. (Note: due to the background mechanism of Apple mobile phone, the toys will automatically stop vibrating when return to the desktop or automatic black screen. In addition, Apple mobile phone comes with 3 songs, more music which needs to be downloaded to iTunes, then the new musics will automatically display in the list)

B: Android system interface, select the music player and turn on favorite music (Music player of mobile phone or downloaded Music player), the toy will vibrate with the music rhythm. Click the oscillogram, the toy stops vibrating; click the oscillogram again to restore the toy shaking. Exit the music mode, and the toy stops shaking. (Note: as long as you do not exit the music mode, you can operate other APPS normally, and the toy will vibrate with the music frequency.)

How to use



Charging

Before use, fully charge your massager, insert Micro plug ⑤ into the charging port ④, the indicator light flashes when charging, the indicator light stops flashing after finished charging. Put the clip on charging box ⑦ for automatic charging. When charging, the indicator flashes and the indicator goes out after finished charging, please use the 5V/500mA USB power adapter or connect the computer USB port to charge.

(Note: DO NOT USE the massager during charging)

connection and use

Shake

Click "Shake" tab enter shake mode interface.

Shake your cell phone, toy vibrating.

Interactive

1. Click "Interactive" tab to enter "Contacts" interface.
2. How to add a friend? click the "+ Friend" to enter the "Add buddy" interface, enter the ID number/nickname/mobile number/mailbox you want to add a friend, click the "find" button, and then click add after finding a friend.
3. After receiving your friend addition request, click "News" to enter the message center. expand message list agree to your friend addition request, you make friends successfully.
4. in "Contacts" tab, Click your friend icon and show Interactive invitation dialog, click "Determine"; after your friend agree to enter to "Interactive control" interface. click "Bluetooth" icon in the upper right corner to connect your toy, after the toy are connected successfully, you friend can control your toy, you can't control your own toy. of cause, your friend click icon connect their toy, you can control your friend toy and you friend can't control their own toy.
5. Click "Invite video" to enter the video room. After your friend receives the invitation, click "Confirm video" to agree, then both parties start video chat.
6. Click "Close" in the upper left corner to exit the "interactive control" mode and return to "Contacts" interface.



Long press the on/off button for two seconds to turn it on or off; press the + or - button to switch the vibration frequency

APP Download and Install

1. For IOS System (Apple series Mobilephone) Search "Love Spouse" in the APP store or scan the QR code below, install as system prompts.
2. For Android System (Android series Mobilephone) Scan the QR code below, download and install "Love Spouse" App as system prompts.
3. Download url: <http://app.lealso.com/>



Cleaning and care

1. After use, the massager should be cleaned to avoid bacteria breeding.
2. Warm water and antibacterial soap can be used to clean the massager.
3. Please ensure you dry the massager with a soft clean towel and store it within the pouch provided keep in a dust free environment.
4. Don't store the massager in hot environment and avoid direct sunlight.

Safe recommendations

1. Please note that don't re-charge exceed 24 hours.
2. Avoid sharing your massager with others.
3. Choose the most suitable vibrating mode for yourself.
4. To avoid causing injury please ensure you use a water based lubricant.
5. Stop using the massager if you find it in anyway uncomfortable.
6. Ensure that you store your massager out of reach of children and pets

Warning: Not to be sold to under 18's.

Warranty

1. All products are present in exquisite packaging and where necessary include a USB charger cable and instruction for use and product care.

Notice: Because of the special nature of adult products, products once used can not be returned. Please check carefully before use. Thank you for your support.

FCC Warning Statement:

This device complies with Part 15 of the FCC Rules. Operation is subject to the following two conditions: (1) this device may not cause harmful interference, and (2) this device must accept any interference received, including interference that may cause undesired operation. Changes or modifications not expressly approved by the party responsible for compliance could void the user's authority to operate the equipment.

NOTE: This equipment has been tested and found to comply with the limits for a Class B digital device, pursuant to Part 15 of the FCC Rules. These limits are designed to provide reasonable protection against harmful interference in a residential installation. This equipment generates, uses and can radiate radio frequency energy and, if not installed and used in accordance with the instructions, may cause harmful interference to radio communications.

However, there is no guarantee that interference will not occur in a particular installation. If this equipment does cause harmful interference to radio or television reception which can be determined by turning the equipment off and on, the user is encouraged to try to correct the interference by one or more of the following measures:

- Reorient or relocate the receiving antenna.
- Increase the separation between the equipment and receiver

--Connect the equipment into an outlet on a circuit different from that to which the receiver is connected.

--Consult the dealer or an experienced radio/TV technician for help

NOTE: This device and its antenna(s) must not be co-located or operation in conjunction with any other antenna or transmitter.

The device has been evaluated to meet general RF exposure requirement. The device can be used in portable exposure condition without restriction.