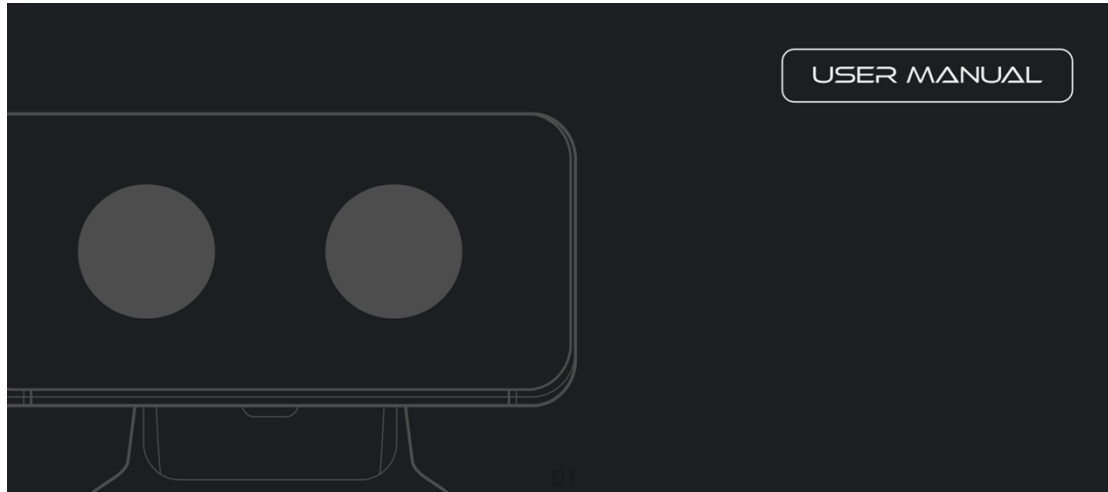


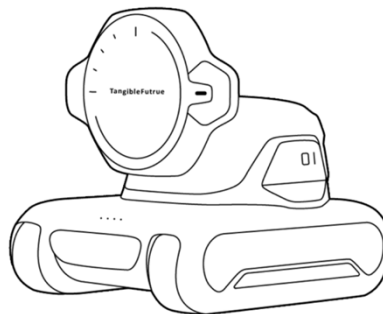
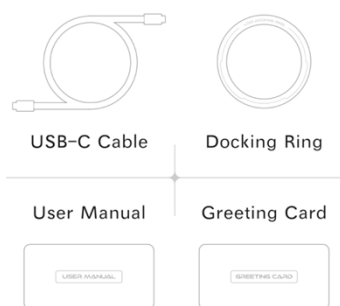
LOOI Robot RLIB01/User manual

Cover



P1 Include In The Box

Include In The Box



01

- Front Touch Sensor
- RGB LED Bar
- LED Head Lights
- ToF & Obstacle Sensors
- Wireless Magnetic Charging
- Side Touch Sensor

- Cliff Sensors

P2 Specification

Product Name	LOOI Robot
Product Model	01
Dimensions	110*98*110mm
Weight	0.85lbs (385g)
Charging Input	5V==2A/9V==2A
Wireless Output	15W Max
Battery Type	Lithium Polymer Battery
Battery Capacity	5000mAh
Compatible OS	iOS/Android
Endurance	5 hours continuous use (30 days standby time)

1. Green Light: Green Light Flashing Rapidly- Charging
2. Red Light: Red Light Flashing Rapidly- Low power
3. Yellow Light: Yellow Light Flashing Rapidly- Pairing
4. White Light: White Light Flashing Rapidly- Awake
5. Cyan Light: Cyan Light Steady On - Working mode

P3-P4 Quick Start Guide

① Scan the QR code with your mobile phone to download the LOOI app

(Or visit www.looirobot.com/pages/app-download to download.)

② Activate the LOOI Robot: For first-time use, please connect LOOI to a power source to activate it. (Please use a 5V==2A/9V==2A USB-C charging adapter, which is not included with this product.)

③ After successfully registering and logging into your account in the LOOI app, proceed to the beginner's tutorial section.

④ Press and hold the front touchpad for 2 seconds until the yellow light flashes

rapidly. Once successfully paired, start your fun journey with LOOI!

P5 Fun to play with LOOI

"Hey ! LOOI"

LOOI is powered by cutting-edge AI with a natural language model. This smart and sassy little buddy can understand what you say and responds with its own unique flair.

Eyes Wide Open

With the LOOI APP, LOOI uses your phone's camera to explore and make sense of this amazing world, and most importantly, to recognize and remember you.

Your Adorable Bionic Pet

LOOI's rich array of expressions and actions will keep you guessing about its next move. Dive into the quirky ideas brewing in LOOI's little head!

Your Desktop Buddy

15W wireless charging

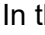
Standby clock

Fun mini-games for health and fitness

There's a whole world of fun waiting for you to explore with LOOI !

P6-P8 CAUTION

Before setting up or using the LOOI Robot, please read the following safety warnings. If this product will be used by minors, guardians should read and explain these instructions to them. Failure to do so may result in injury.

In these instructions, you'll see symbols like  followed by "Warning" or "Caution." These terms indicate different levels of risk as described below. Please read and understand these terms and the information that follows them before using the LOOI Robot.

 **Warning:** Indicates that improper use of the LOOI Robot may lead to

serious personal injury.

⚠⚠ Caution: Indicates that improper use of the LOOI Robot may cause personal injury or damage to the device, components, or your phone.

⚠⚠ Warning - Safe Usage

Not suitable for children under 3 years old.

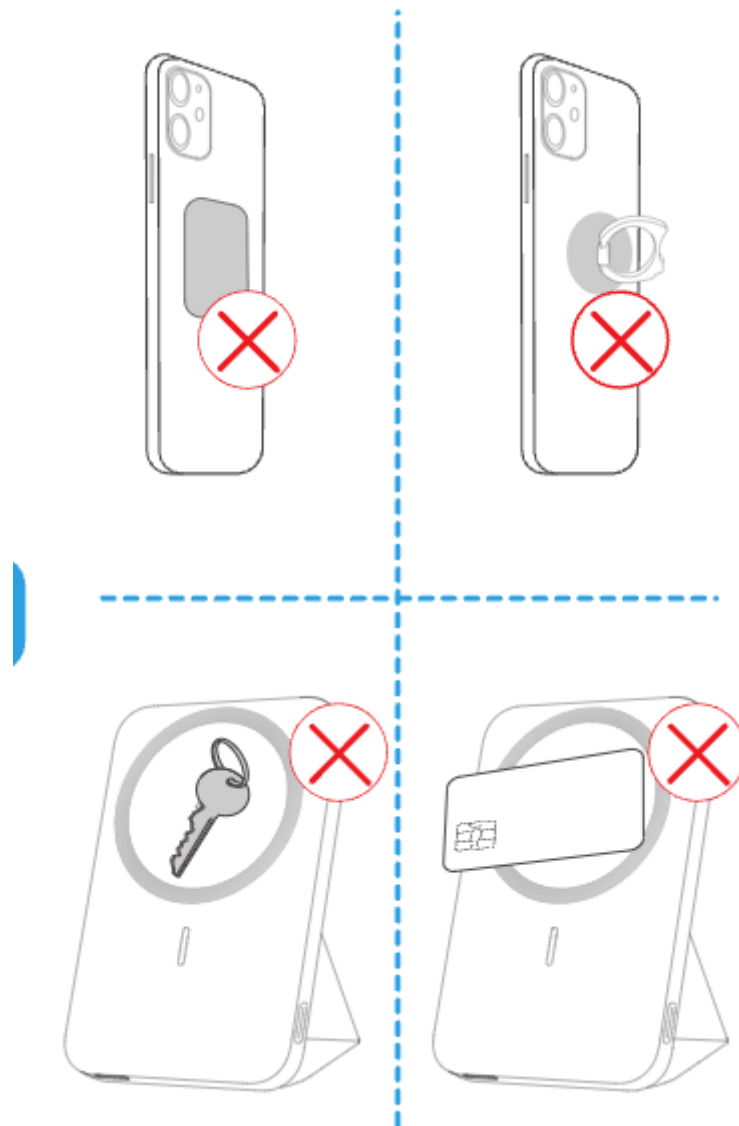
1. The LOOI Robot is an ELECTRICALLY OPERATED PRODUCT and is not recommended for children under 8 years old. As with all ELECTRICALLY OPERATED PRODUCTS, precautions should be taken during operation and use to prevent electric shock.
2. LOOI Robot may contain small parts that could pose a choking hazard to young children. Keep these parts out of reach of young children.
3. Batteries should only be charged by adults.
4. Long cable. Strangulation hazard!
5. Do not insert fingers into gaps such as tracks or the neck to avoid pinching injuries.

⚠⚠ Warning - Battery and Wireless Charging Safety

1. The LOOI Robot contains a rechargeable lithium-ion battery. Leakage of battery contents, or combustion products of the contents, can cause personal injury and system damage.
2. If battery leakage occurs, avoid contact with skin. If contact occurs, wash thoroughly with soap and water. If battery fluid contacts your eyes, rinse immediately with water and seek medical attention.
3. To avoid battery leakage:
 - a. Do not subject the battery to excessive physical shock, vibration, or liquid immersion.
 - b. Do not disassemble, attempt to repair, or deform the battery.
 - c. Do not dispose of the LOOI Robot in fire.
4. Please use an adapter with an output of 5V/2A (10W) or higher to charge the LOOI Robot.
5. Wireless chargers make charging more convenient than wired chargers, but confined by current wireless technology, their charging speed is slower than that of wired chargers.
6. High temperatures will reduce charging speed and restrict power, which is

something that happens to all wireless chargers. It is recommended that you charge your device in environments with temperatures below 25°C / 77°F.

7. Both the protective phone case and the position of your device on the wireless charger will affect the charging speed. The farther it is placed from the center of the wireless charger, the slower the charging speed will be.
8. When charging a device, the product may feel warm. This is a normal operating condition and should not be a cause of concern.
9. In normal conditions, the battery performance will decline over several years.



Warning - Radio Frequency Interference

1. The LOOI Robot may emit radio waves that affect the operation of nearby

electronic devices, including pacemakers.

2. Do not operate the LOOI Robot within 22 centimeters of a pacemaker.
3. If you have a pacemaker or other implanted medical device, do not use the LOOI Robot without first consulting your doctor or the device manufacturer.

⚠️ Caution - LOOI Robot Care and Maintenance

1. Do not disassemble or attempt to repair the LOOI Robot or its components, as this may cause damage. For service or repairs, contact qualified personnel. Incorrect reassembly may result in fire or injury risk.
2. Do not store the LOOI Robot in damp places, on the floor, or anywhere that might expose it to moisture, dirt, dust, lint, or other debris.
3. Avoid exposing the LOOI Robot to extreme heat or cold, and do not leave it in direct sunlight for extended periods.
4. Do not use harsh chemicals or cleaners to clean this product.
5. Do not drop, strike, or otherwise abuse the LOOI Robot or its components. Doing so may damage its delicate parts.
6. The LOOI Robot cannot recognize transparent, black, or dark tables. Avoid using it on such surfaces to prevent falls and damage to the robot or any phone attached to it.
7. Ensure that the magnetic strength of the MagSafe phone case or non-official magnetic ring is sufficient to securely hold the phone, preventing potential drops and damage.
8. Make sure the back of your phone or phone case is clean and free of obstructions, and that the thickness of the phone case complies with the manufacturer's requirements for wireless charging.
9. Carefully make all electrical connections for the LOOI Robot and insert them only in the correct locations.
10. Do not spill liquids on the LOOI Robot. If liquids get inside, do not charge the robot. Contact customer service for further instructions.

P9 Disclaimer

By using this **LOOI Robot** product, you acknowledge that you have carefully read, understood, and accepted all the terms and contents of this disclaimer and safety guidelines. You also agree to the terms and policies outlined at www.looirobot.com/pages/privacy-policy. You commit to using this product correctly, in appropriate environments, and for legitimate purposes only, and you accept full responsibility for your use of the product and any consequences that may arise. You agree to comply with these terms, including health and safety notices and related terms, policies, and guidelines. **TangibleFuture** assumes no responsibility for any financial loss or personal injury resulting from improper use of the product or failure

to follow the safety guidelines.

TangibleFuture is not responsible for your use of third-party content or any content or functionality within third-party content accessed through **LOOI Robot**. You are required to adhere to all recommendations and guidelines associated with such third-party software. Your rights and obligations related to the use and access of third-party content are exclusively governed by your agreements with those providers.

When using the LOOI Robot, you must also comply with any warnings and guidelines provided by your phone manufacturer regarding phone usage.

P10 Warranty Policy

Warranty Information

- This product is manufactured under strict quality control.
- Under normal use, we offer a comprehensive one-year warranty from the date of purchase. During the warranty period, non-human-induced quality issues can be repaired free of charge.
- The warranty covers any repairs for non-human-induced issues and provides customer service and expert guidance and assistance during the warranty period.
- The warranty period will comply with the consumer laws of the country where the product was purchased.
- Please keep this warranty card safe and avoid any alterations or tampering.
- For any inquiries, please contact us at: service@looirobot.com

Exclusions from Warranty

- Beyond the warranty period.
- Unauthorized disassembly of the LOOI Robot product.
- Damage caused by unavoidable events such as fire, flood, or lightning strikes.
- Reselling your LOOI Robot product.
- Damage caused by human actions, such as physical damage or liquid intrusion.
- Non-compliant use of the product in violation of any laws or agreements with us.
- Other failures and damages not related to the product itself, manufacturing, or quality issues.

User Name :	Product S/N :
Phone Number :	Date of Purchase :
E-mail :	Purchase Platform :
Address :	

To learn more visit looirobot.com

TangibleFuture CO.,LTD.

FCC Statement

This device complies with Part 15 of the FCC rules. Operation is subject to the following two conditions: 1) this device may not cause harmful interference, and 2) this device must accept any interference received, including interference that may cause undesired operation.

Note: This equipment has been tested and found to comply with the limits for a Class B digital device, pursuant to part 15 of the FCC Rules. These limits are designed to provide reasonable protection against harmful interference in a residential installation.

This equipment generates uses and can radiate radio frequency energy and, if not installed and used in accordance with the instructions, may cause harmful interference to radio communications. However, there is no guarantee that interference will not occur in particular installation. If this equipment does cause harmful interference to radio or television reception, which can be determined by turning the equipment off and on, the user is encouraged to try to correct the interference by one or more of the following measures:

- Reorient or relocate the receiving antenna.
- Increase the separation between the equipment and receiver.
- Connect the equipment into an outlet on a circuit different from that to which the receiver is connected.
- Consult the dealer or an experienced radio/TV technician for help.

Changes or modifications not expressly approved by the party responsible for compliance could void the user's authority to operate the equipment.

FCC Radiation Exposure Statement

This device complies with FCC RF radiation exposure limits set forth for an uncontrolled environment. This device must operate with a minimum distance of 20 cm between the radiator and user body.

ISED Statement:

This device contains licence-exempt transmitter(s)/receiver(s) that comply with Innovation, Science and Economic Development Canada's licence-exempt RSS(s). Operation is subject to the following two conditions::

- (1) This device may not cause interference; and
- (2) This device must accept any interference, including interference that may cause undesired operation of the device.

Cet appareil contient des émetteurs/récepteurs sans licence conformes aux normes CNR d'Innovation, Sciences et Développement économique Canada. Son fonctionnement est assujéti aux deux conditions suivantes :

- (1) Cet appareil ne doit pas causer d'interférence ; et
- (2) Cet appareil doit tolérer toute interférence, y compris celles qui pourraient entraîner un fonctionnement indésirable.

Radiation Exposure statement

This equipment complies with ISED radiation exposure limits set forth for an uncontrolled environment. This equipment should be installed and operated with minimum distance 10 cm between the radiator and your body.

Cet équipement est conforme aux limites d'exposition aux radiations ISED établies pour un environnement non contrôlé. Cet équipement doit être installé et utilisé avec une distance minimale de 10 cm entre le radiateur et votre corps.