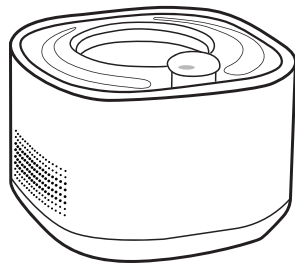


Wala Smarty Interactive Storyteller

—
User Manual

Wala Smarty



CATALOG

1. About Wala Smarty Interactive Storyteller.....	01
2. Warnings and safety instructions.....	02
3. Package contents.....	05
4. Set up your Wala Smarty and start listening.....	06
5. Operations & Lighting effects.....	20
6. Question & Answer.....	23
7. Technical data.....	24
8. Warranty.....	25

About Wala Smarty Interactive Storyteller

Thank you for choosing the Wala Smarty Interactive Storyteller.

This product needs to be used with Wala Smarty Audio Character.

Random interactive points will appear during the story playback, when the user is required to communicate with the partner in the story through the form of dialog. We hope it can bring you an interesting and novel experience.

Please read these instructions carefully before use.

Let's start your own story journey together!

Warnings and safety instructions

CAUTION-ELECTRIC TOY: Not recommended for children under 6 years of age. As with all electric products, precautions should be observed during handling and use to prevent electric shock.

Please keep this user manual in a safe place as it contains important information about the product and its use.

Please read all safety instructions before using the Starter Set.

Wala Smarty and its suppliers assume no responsibility for any damage or loss resulting from the use of this guide.

WARNING:

CHOKING HAZARD-Small parts.
Not for children under 6 yrs.

WARNING:

All packing materials, such as tape, plastic sheets, removeable tags and desiccant are not part of this toy and should be discarded for your child's safety.

WARNING:

All Wala Smarty items contain inaccessible, strong magnets. Please keep them away from medical components such as defibrillators, shunts or pacemakers as well as from magnetic sensitive products such as magnetic data carriers, credit cards or computers.

Safety instructions

Charging Safety:

Be sure to connect to a power outlet that meets national standards when using this equipment.

Please select a 5V power adapter to avoid damage to the device.

Usage environment:

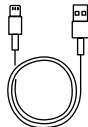
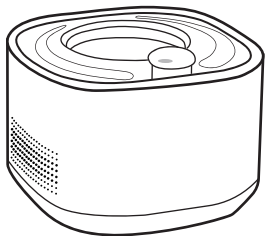
The Wala Smarty is designed for home use and is not splash- or drip-proof. Do not drop the unit on hard surfaces and do not expose the unit to excess moisture or immerse it in water.

Keep the unit out of direct sunlight and away from any direct heat sources.

Avoid use in extreme temperatures
(below 0°C or above 40°C).

Make sure the Wala Smarty is placed on a firm surface, away from edges, to prevent dropping.

Package contents

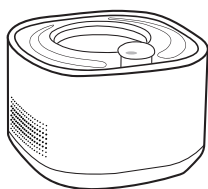


- Wala Smarty Interactive Storyteller
- Wala Smarty Audio Character (Only in KIT)
- User manual
- Type-C charging cable

Set up your Wala Smarty and start listening

Before you can use your new Wala Smarty Interactive Storyteller, you must first set it up. You'll need a smartphone, tablet or computer to get started.

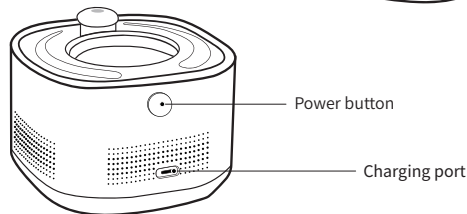
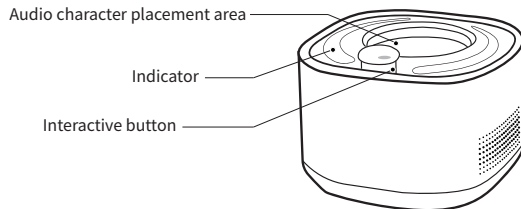
Download the free 'Wala Smarty' app and follow the step-by-step guide to set up your Wala Smarty Interactive Storyteller.



Note: Each character can match up to 3 storytellers. If you want to play the story on more storytellers, please purchase new character through official channels.

Note: Only work with 2.4G WIFI

1.Overview



Note: Please choose the official channels to buy the Audio character. Otherwise it will not work properly.

2.Set up

1.Connecting the power supply

Plug the Type-C power cable into the charging hole, the USB-A into the 5V power adapter, and the adapter into a power outlet.

2.Turning on

Press and hold the power bottom.

3.Connecting WIFI

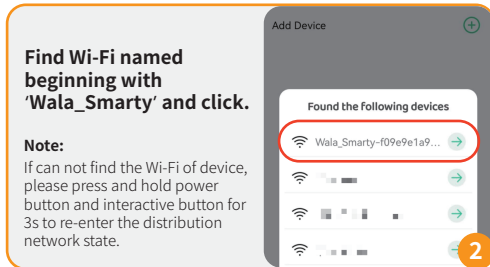
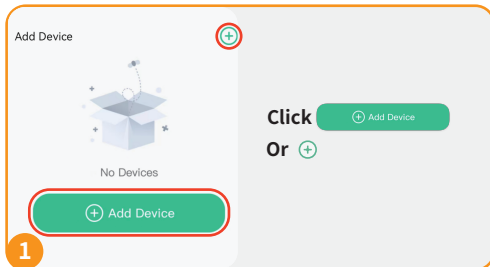
1.Scan the QR code below or search for 'Wala Smarty' app in the app store to download and install the app.



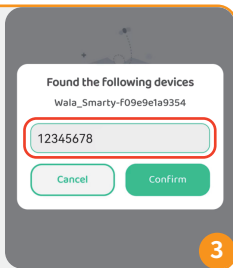
2.Press and hold the interactive button and the power button together until the indicator blinks with an audible alert.

3.Follow the app guidelines and enter the correct Wi-Fi information to link the Wala Smarty Interactive Storyteller.

Android



**Enter device
password: 12345678**



Found the following devices
Wala_Smarty-f09e9e1a9354

12345678

Cancel Confirm

3

Click  to connect device.

Note:

1. If fail, please check the password.
2. Individual models may pop up a system device connection prompt, please click to confirm.

12345678

Cancel

Confirm

Device to use with Wala Smarty

Wala_Smarty-f09e9e1a9354
Encrypted

CONNECT

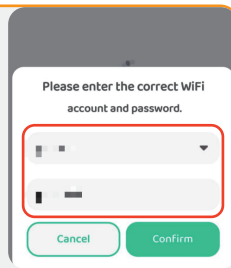
CANCEL

4

**Enter the name and
password of the Wi-Fi
you want to connect.**

Note:

1. Please make sure the Wi-Fi is 2.4G.
2. Please make sure the name and password are right.



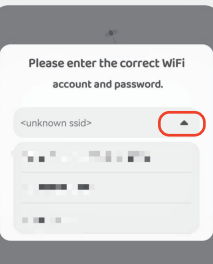
Please enter the correct WiFi
account and password.

Cancel Confirm

OR

**Please enter the correct WiFi
account and password.**

<unknown ssid>



Cancel Confirm

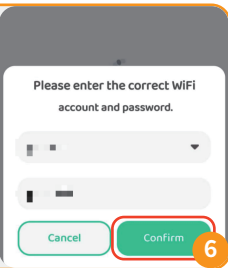
**You can also choose
the Wi-Fi in the
drop-down menu.
And enter the password.**

5

Click **Confirm** to connect the Wi-Fi. The connection will be alright with blue light on the device.

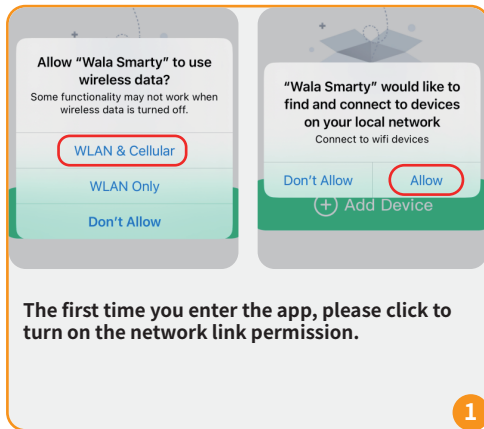
Note:

If no blue light for more than 1min, please repeat the above steps. Check the name and password and if the Wi-Fi is 2.4G.



IOS

Note: Unenabled permissions will prevent the network from being configured properly. If you have been denied permissions, enable them in **Settings - Wala Smarty**.



The first time you enter the app, please click to turn on the network link permission.

Add Device



No Devices

+ Add Device

Click
Or +

+ Add Device

2

Click **Go** to jump to the settings page.

Please connect to device Wifi

Cancel

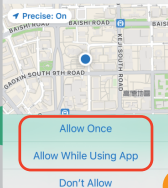
Go

+ Add Device

4

For the first time, please turn on the mobile application location privileges to enable the nearby network search function.

Allow "Wala Smarty" to use your location?
need wifi info to connect device

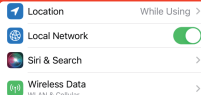


3

Wala Smarty
< Settings

Wala Smarty

ALLOW WALA SMARTY TO ACCESS



5


Check the Location and Local Network are On. Click Settings.

Note:

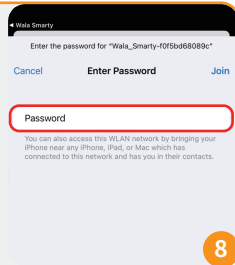
Please make sure all permissions are turned on in the app permissions page.

Click  **WLAN** to go to the Wi-Fi link page.




Enter the password:
12345678
Click 

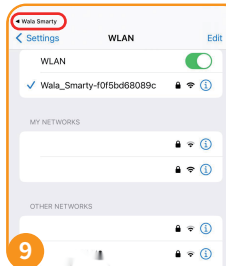
Note:
The device password is unique and fixed value, if this step shows link failure, please make sure the password is entered correctly.



Find the Wi-Fi name beginning with 'Wala_Smarty'. Click to connect device.



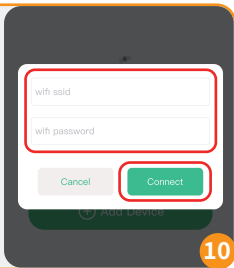
Click  **Wala_Smarty** to go back to the APP.



Enter the name and password of the Wi-Fi you want to connect. And click .

Note:

If no blue light on the device for more than 1min, please repeat the above steps. Check the name and password and if the Wi-Fi is 2.4G.



4.Start listening and interacting

Note: Before doing this, make sure that the storyteller is successfully connected to the network.

- 1.Select the Wala Smarty Audio Character you want to play.
- 2.Put the Audio Character into the Audio character placement area.
- 3.Successful pairing, play an audible alert.

Note: Each character can match up to 3 storytellers. If you want to play the story on more storytellers, please purchase new character through official channels.

Operations & Lighting effects

The Wala Smarty Interactive Storyteller has different LED indicators with different functions. Here's a brief overview for operations and lighting effects:

1. Operations

No.	Operations	Buttons	Operating method
1	Turn on	Power button	Press and hold
2	Turn off	Power button	Press and hold
3	Connect Wi-Fi	Power button & Interactive button	Press and hold both for 3s
4	Play story	Audio character	Put the character into the Audio character placement area
5	Replay story	Interactive button	Press for 3 times Note: When this is not done, playback continues by default from the point where the last playback ended

6	Pause	Interactive button	Press twice when playing
7	Resume	Interactive button	Press twice when pausing
8	Interact	Interactive button	When the Indicator Light is on, press and hold to start talking. And release the button when finish talking. Note: Interaction waiting lasts only 10s. If no voicedialog is made with in 10s, the story will randomly select the default response to continue playing.
9	Skip interaction	Interactive button	When the interaction Indicator Light is on, press briefly
10	Turn up the volume	Interactive button	Turn clockwise
11	Turn down the Volume	Interactive button	Turn counter-clockwise

2.Lighting effects

No.	State	Lighting effect	Status
1	Normal	Green light	Playing story
2		Breathing green	Playing story with charging
3		Flashing green	Audio character check success
4		Blue light	Standby with networking
5		Breathing blue	Charging with networking and no playing
6		Flashing orange	Interaction point tip
7		Breathing orange	Interacting
8		Cycling pink	Connecting web
9	Abnormal	Breathing pink	Charging without web connection
10		Pink light	No web
11		Cycling red	Audio character check failure
12		Flashing red	Low battery and turn off in 30s

Question & Answer

Unable to connect to the network:

- 1.Please make sure that the mobile app has enabled Wi-Fi, network link and other permissions.
- 2.Please make sure the Wi-Fi is configured for 2.4G.
- 3.Please make sure the configured Wi-Fi is available.
- 4.Please make sure the Wi-Fi password is entered correctly during the configuration process.

Audio character no recognized / no playing properly

- 1.Please make sure that the Audio Character you are using is a genuine product purchased through official channels.
- 2.Please make sure that the Audio Character base has been placed in the story machine equipment doll placement area, and the center is not blocked.
- 3.Please make sure the storyteller has been successfully connected to the network.
- 4.Each character can match up to 3 storytellers. If you want to play the story on more storytellers, please purchase new character through official channels.

Technical data

External Voltage: 5V DC

Battery: 3.7V 750mAh rechargeable lithium-ion battery

NF: 3W&4Ω loudspeaker

Wi-Fi: 2.4GHz

Frequency band: 2400-2483.5MHz

Transmit Power: 20dBm

NFC: 13.56MHz

Warranty

1-Year Warranty

The original purchaser for this unit is provided with a 1-YEAR Warranty. The warranty begins on the date of purchase. For the first year, coverage is provided for both parts and labor on warranty repair services. All shipping fees incurred, the cost of accessories after the first year, and labor fees associated with out of warranty repair work are the customers responsibility.

Not Covered Under Warranty

We DO NOT offer warranty for products that have been bought secondhand or were resold. Issues of replacement and refunds on units purchased less than 30 days from an authorized dealer must be addressed to the dealer directly. If the products purchased from an authorized dealer are after 30 days from the date of purchase, please send the units to us for service and repair.

We DO NOT cover the cost of repairs and replacements due to misuse by the owner , improper maintenance, and/or lost units. The warranty is void if the unit has been altered or an unauthorized person has damaged the unit while attempting repair work.

Procedure for Repair Work

If the unit is malfunctioning, please refer to the 'Q&A' in the manual before sending it back for service. A copy of the sales receipt showing the purchase date may be required before warranty work is initiated. Please include a brief explanation outlining the problem, and include your name, address, city/state/zip code, daytime phone number, evening phone number, and email address.

Compliance FCC - USA

This device complies with part 15 of the FCC rules. Operation is subject to the following two conditions:

1. This device may not cause harmful interference.
2. This device must accept any interference received, including interference that may cause undesired operation.

CAUTION: Modification or changes to this equipment not expressly approved by the manufacturer may void the user's authority to operate the equipment.

Note: This equipment has been tested and found to comply with the limits for a Class B digital device, pursuant to part 15 of the FCC Rules. These limits are designed to provide reasonable protection against harmful interference in a residential installation. This equipment generates uses and can radiate radio frequency energy, if not installed and used in accordance with the instructions, may cause harmful interference to radio communications. However, there is no guarantee that interference will not occur in a particular installation. If this equipment does cause harmful interference to radio or television reception, which can be determined by turning the equipment off and on, the user is encouraged to

try to correct the interference by one or more of the following measures:

1. Reorient or relocate the receiving antenna.
2. Increase the separation between the equipment and receiver.
3. Connect the equipment into an outlet on a circuit different from that to which the receiver is connected.
4. Consult the dealer or an experienced radio/TV technician for help.

This equipment complies with FCC radiation exposure limits set forth for an uncontrolled environment.

Product Name:Wala Smarty Interactive Storyteller

Product Model:SS01

Applicable age:6 Yrs+

Manufacturer:WalaWala (Shenzhen) Technology Co., LTD

Manufacturer Address:

Room 411-413, Jinhongfeng Building, Area 71, Xingdong Community, Xin'an Street, Bao'an District, Shenzhen

Main Materials:ABS、PVC

Repair:Wipe with a soft cloth

E-mail: service@walatech.com

Web Address:Walatech.com



Wala Smarty APP

FC CPC SRRC
MADE IN CHINA