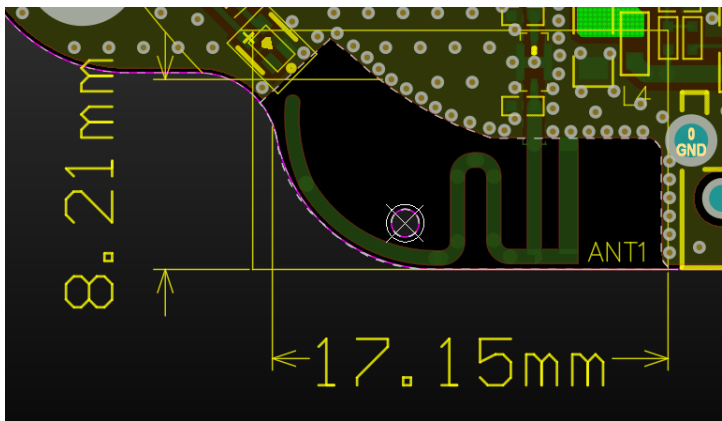


# Onboard Bluetooth WIFI antenna specification

1. Antenna overview

The onboard antenna is directly printed by PCB, the antenna is copper bobbing and tin-spraying process, the copper foil thickness is 10Z, and the plate is FR-4 thickness 1.2mm material.

2. Antenna configuration



3. Antenna parameter

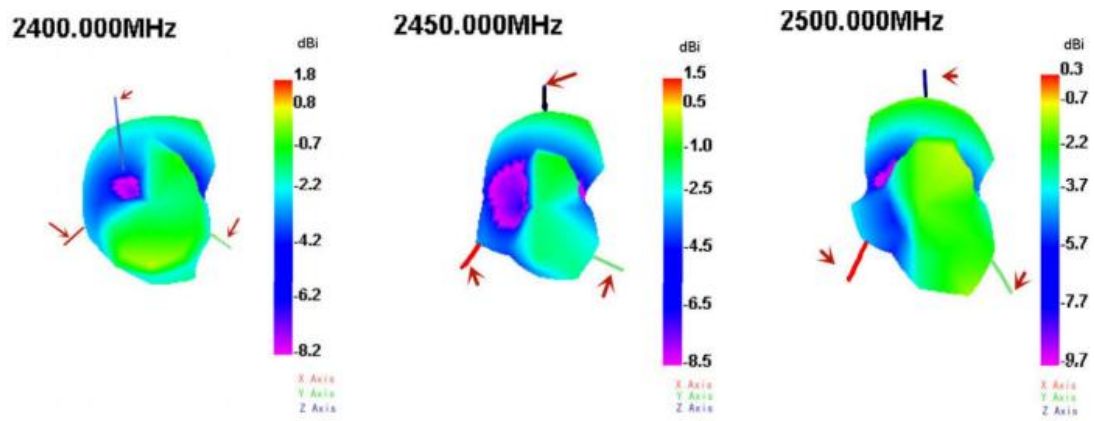
|                | Antenna          |
|----------------|------------------|
| Frequency(GHz) | 2412-2472Mhz     |
| VSWR           | VSWR ≤ 1.92      |
| Impedance      | 50 Ohm Nominal   |
| Return Loss    | -8.5 dB Max      |
| Radiation      | Omni-directional |
| Gain (Peak)    | 0dB              |
| Polarization   | Linear, Vertical |
| Admitted Power | 2W               |
| Connector      | Tin              |

4. Antenna gain

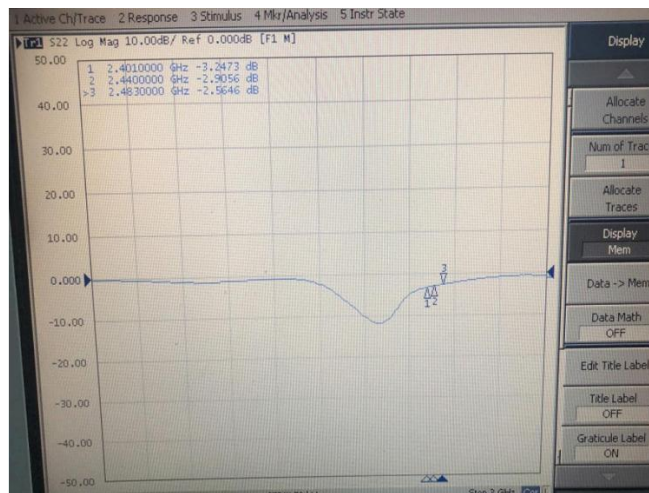
| Frequency VNA (MHz) | Max Gain(dB) |
|---------------------|--------------|
| 2400                | 1.45         |
| 2430                | 1.19         |
| 2450                | 1.39         |
| 2470                | 1.18         |
| 2490                | 1.28         |



## 5. Directional diagram



## 6. 驻波



manufacturer:

Meizhou Youjie Technology CO., LTD

Dongsheng Gongyeyuan Floor 1, Meizhou, GUANGDONG 514768 China