



Appendix - Internal Photographs of EUT Constructional Details

Model: GP55M

Photo 1



Photo 2

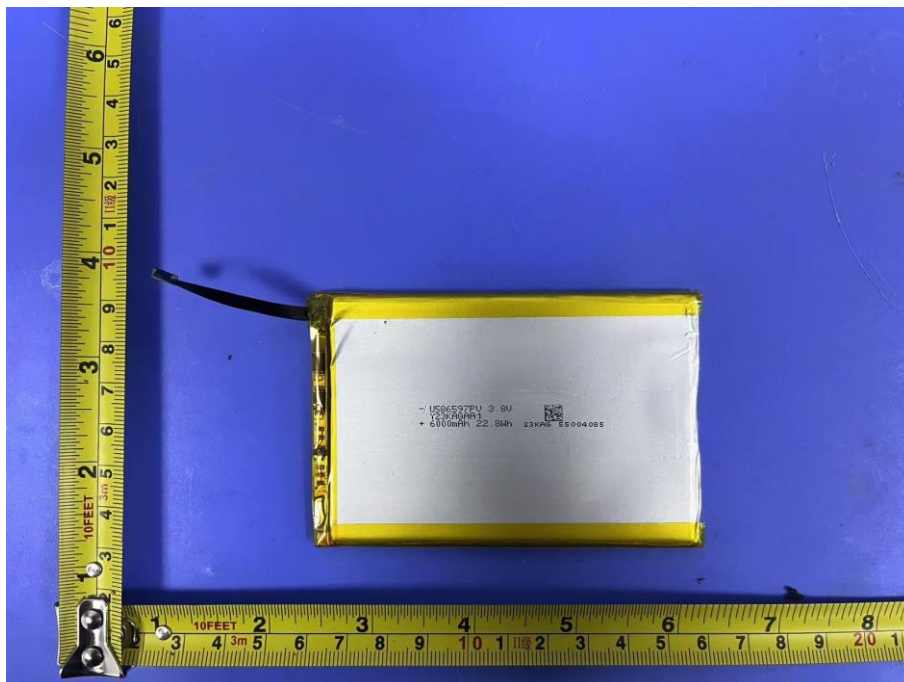




Photo 3



Photo 4

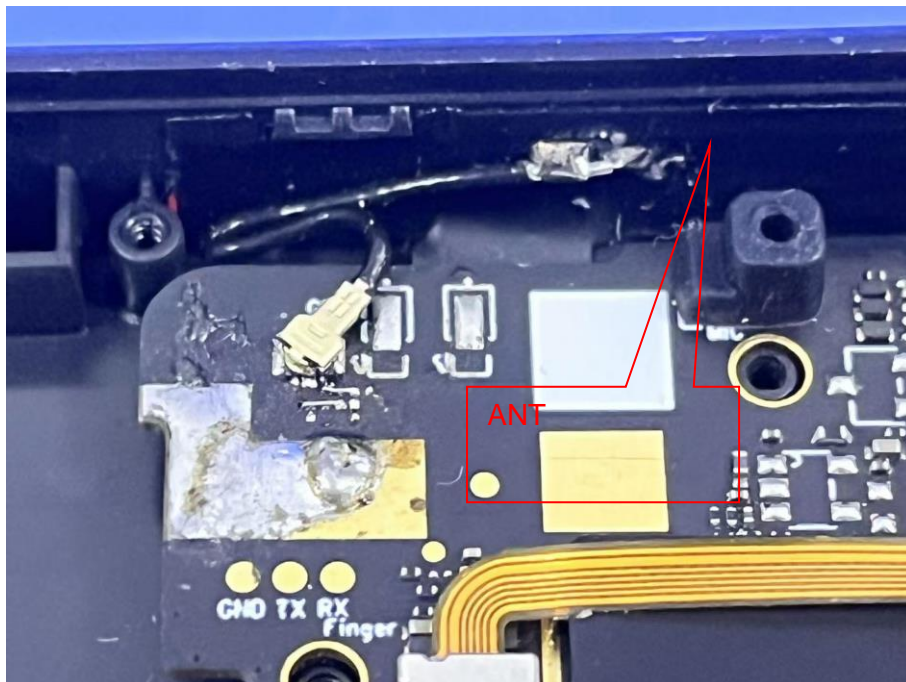




Photo 5

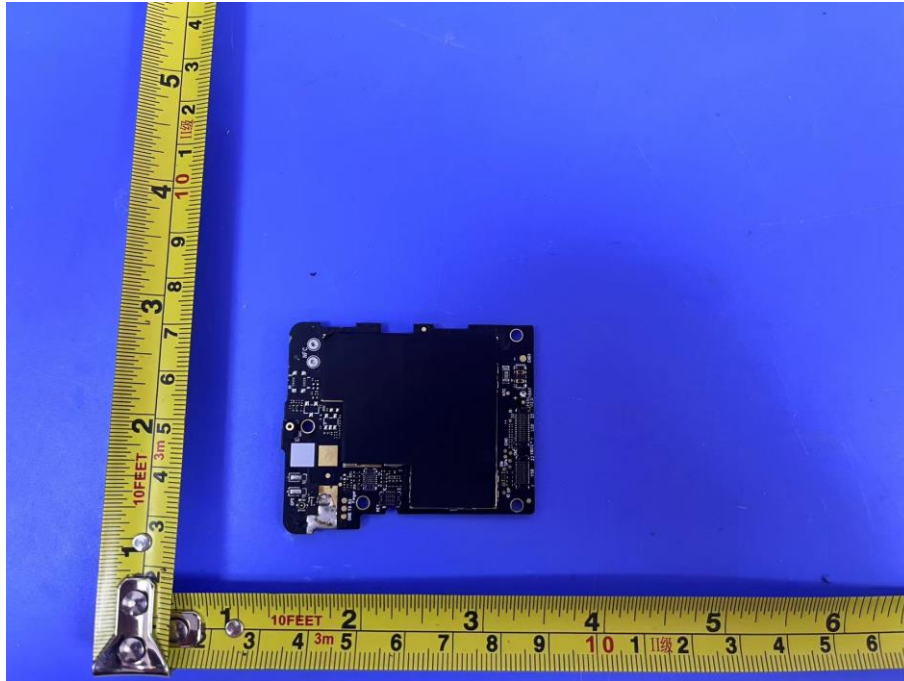


Photo 6

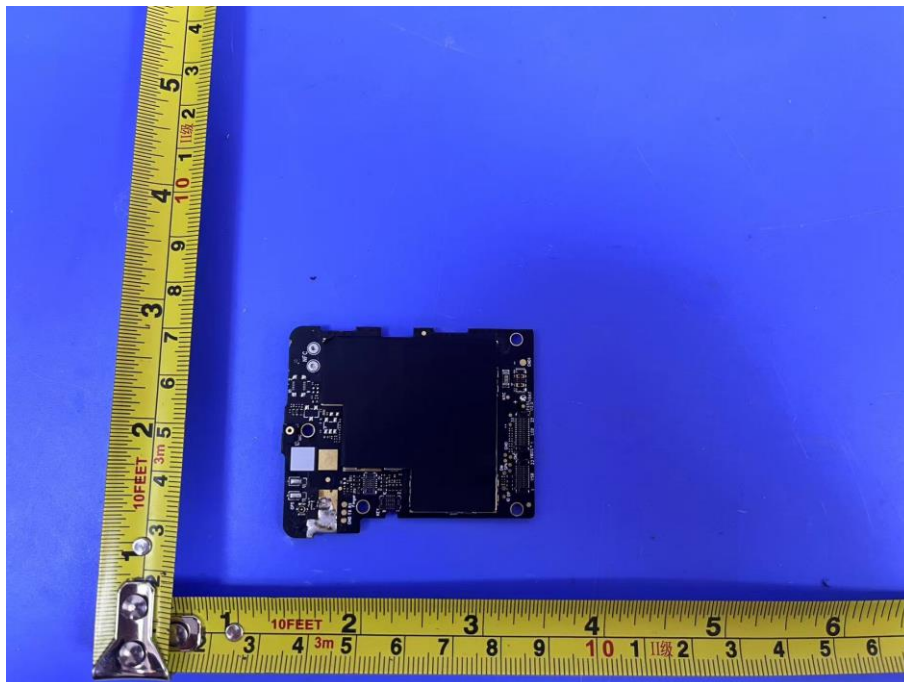




Photo 7

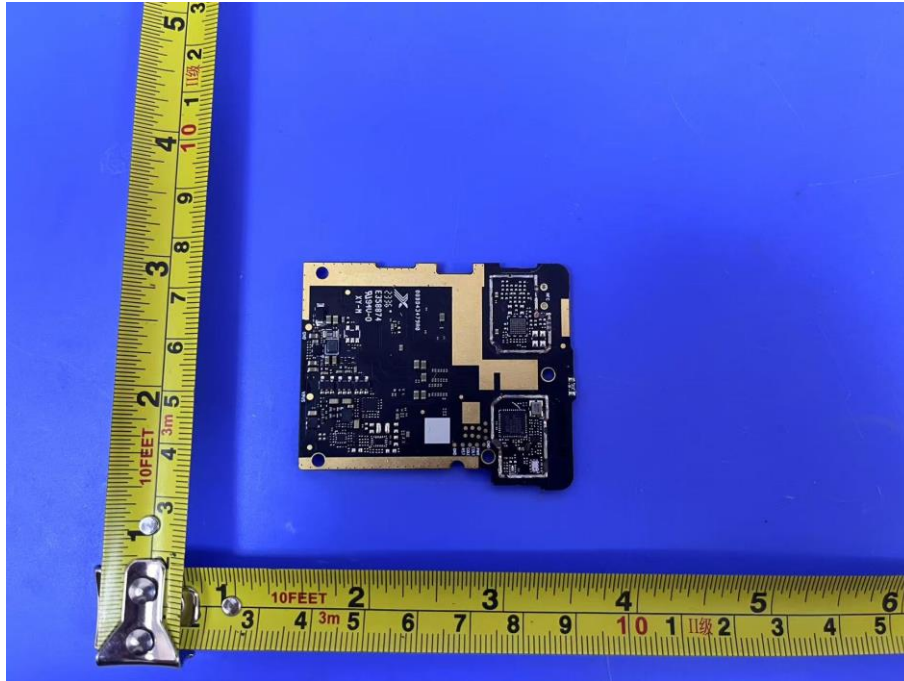
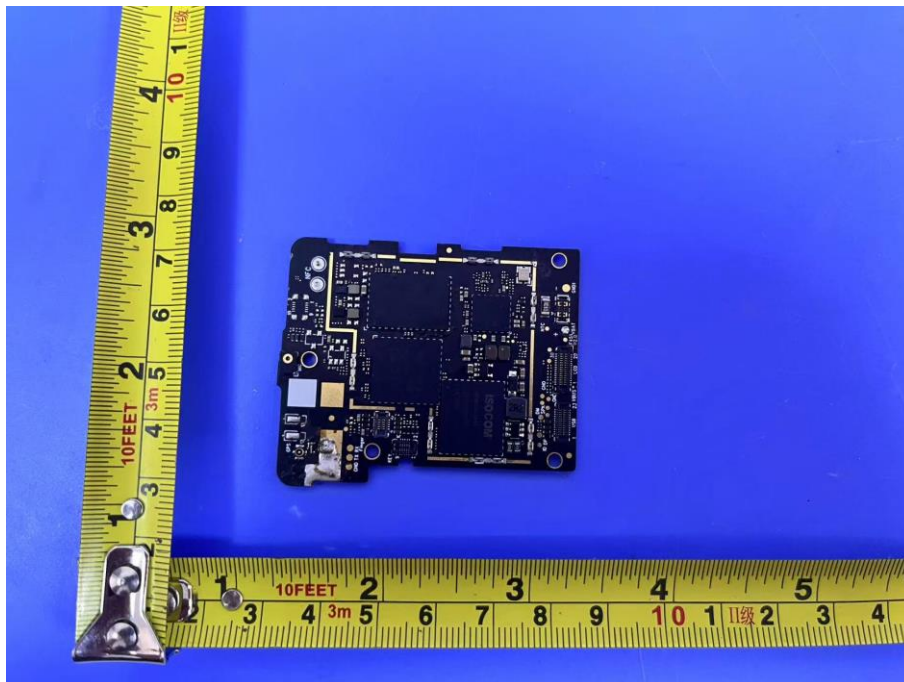


Photo 8



This image shows a detailed view of a mobile phone's internal circuit board. The board is populated with several key components:

- A large black square chip at the top left, labeled "FORESEE FLXC4D04G-26". Below it, smaller text reads "Q2112.19261521-3" and "CGA".
- A black rectangular chip below the Foresee one, labeled "MEDIATEK MT8168V ARM". Further down on this chip are the markings "2330-ZB7BSH" and "CXW5102J-B".
- To the right of the Mediatek chip is another black square chip labeled "MEDIATEK MT6957ASW". Below it, more text includes "2313-A0P4" and "DCAL6PS2".
- In the bottom center, there is a black rectangular component labeled "ISOCOM". Above this label, the text "MEMIDN0840" and "U23080519022" is visible.
- Various other components are scattered across the board, including small surface-mount capacitors (some labeled "4.7µF", "2R2"), resistors, and connectors. A gold-colored flex cable connector is visible on the left side.

The overall appearance is that of a standard printed circuit board (PCB) used in consumer electronics.



Photo 11



Photo 12

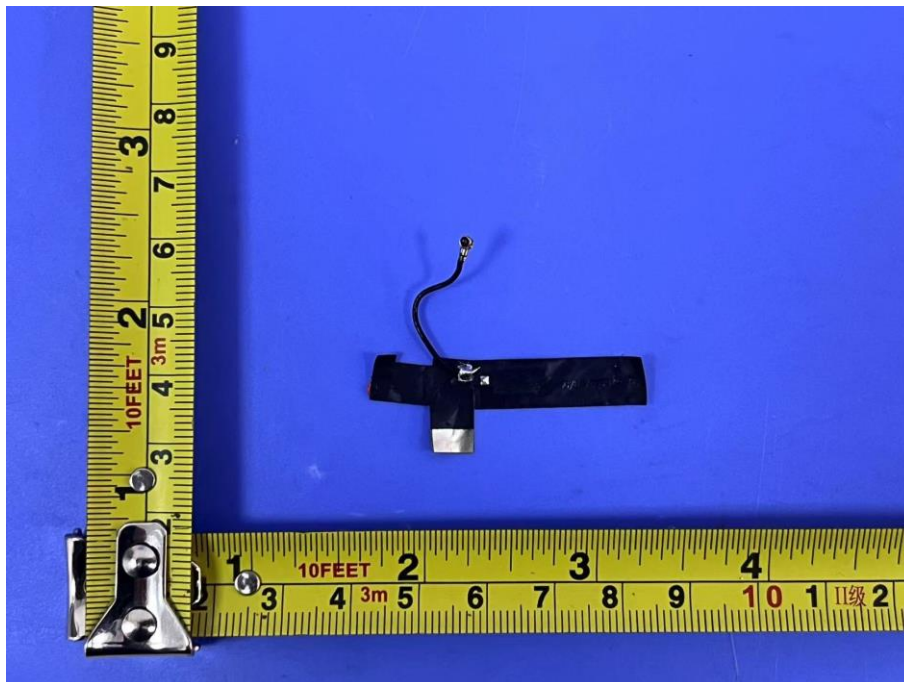




Photo 13



Photo 14

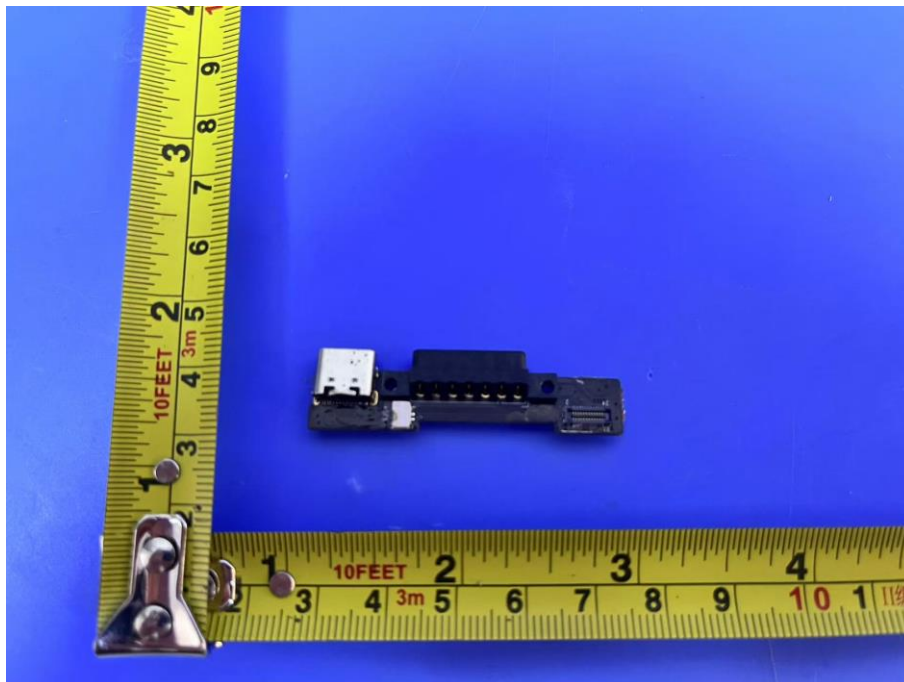




Photo 15

