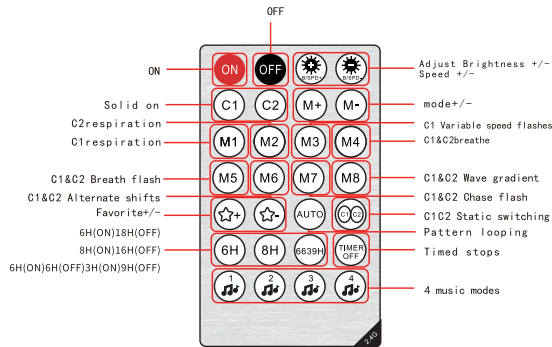


210 mm



- 1 -

1. Download the APP

Download the "Surplife" app from the App Store and Google Play Store, or scan the QR code.

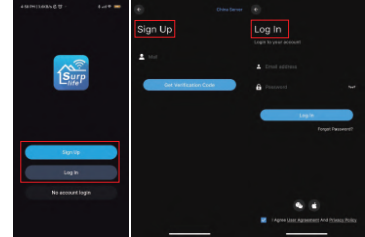


Surplife APP



2. How do I connect to Surplife App?

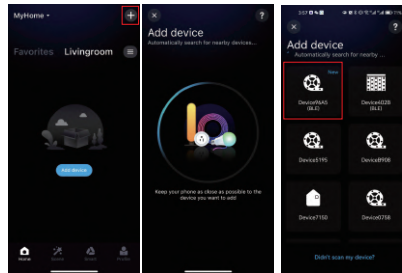
- 1) Register/login to your Surplife account.
- 2) You can log in as a visitor.



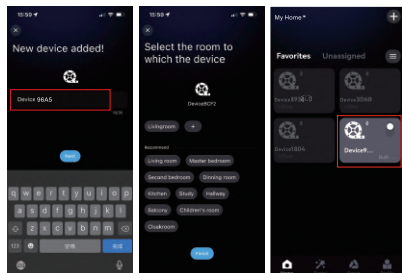
- 3) Turn on the device and enable the Bluetooth function of the phone.

- 2 -

- 4) Enter the "surplife" app and click "Add Device" or "+" to add device.



- 5) Rename the device and select a room for it.

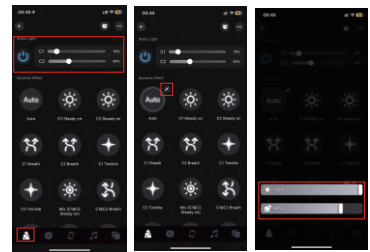


- 3 -

3. Detailed introduction of APP functions:

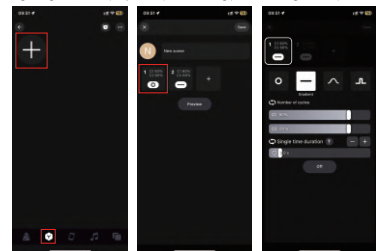
1) Lighting effect

The brightness of static light can be freely adjusted, and the brightness and speed can be adjusted at the same time by selecting different dynamic effects of light.



2) Scenario mode

Click "+" to create a new scene, select the lighting effect of different categories of scene mode, set the lighting effect duration and the brightness of the light. Combine different lighting effects to play in sequence, long press to drag the sequence.

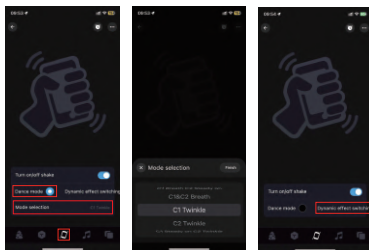


- 4 -

160 mm

3) Shake the function

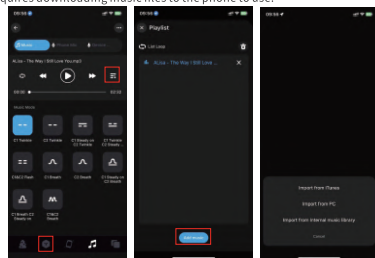
Open the shake function, you can choose the dancing mode or the dynamic effect switch mode, with the shaking of the phone, the light will show a different effect.

**4). Music**

① Music mode: The lighting changes with the rhythm of the music, and you can choose different music modes.

Click "Add Music" to import the music file or import from the built-in music library.

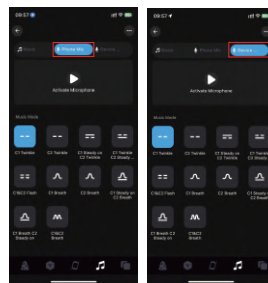
Note: IOS requires downloading music files to iTunes or importing music from PC according to the instructions, or selecting music from the built-in mode. Android requires downloading music files to the phone to use.



— 5 —

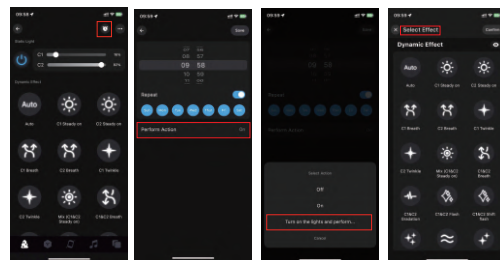
② microphone

The lights are converted to different rhythmic lighting effects according to the signal received by the microphone, and the music mode can be selected.

**5).Timing function**

1). Set the timing switch on the lights it controls based on the time you set.

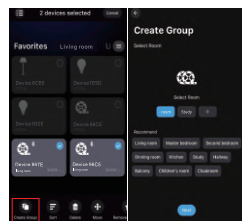
2). When the lights are turned on, you can freely choose different lighting effect Settings.



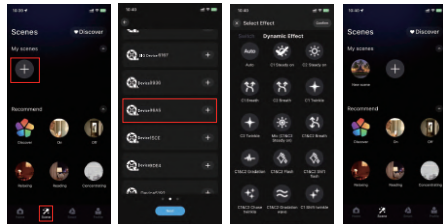
— 6 —

6).Group control

Multiple controllers can be classified into the same group, and the devices in the group can be controlled by one-click dimming, switching and other functions.

**7) Scene function**

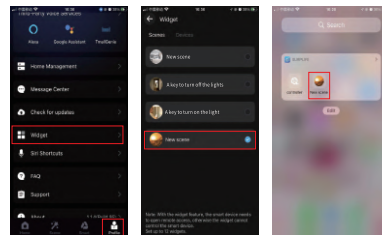
In the scene interface, create different scene lighting colors or dynamic effects according to individual needs.



— 7 —

8) Widget addition steps (Set the scene function in advance)

Go to the page "My" > Click "Widget" > Add scene to widget.

**Notice**

- 1) Please use the product in a dry environment;
- 2) Input voltage please use 12-36V DC voltage, do not directly use 220V AC;
- 3) This product is anode connection mode, do not connect wrong, easy to lead to product failure.

— 8 —

210 mm

160 mm

FCC Warning Statement:

This equipment has been tested and found to comply with the limits for a Class B digital device, pursuant to part 15 of the FCC Rules. These limits are designed to provide reasonable protection against harmful interference in a residential installation. This equipment generates, uses and can radiate radio frequency energy and, if not installed and used in accordance with the instructions, may cause harmful interference to radio communications.

However, there is no guarantee that interference will not occur in a particular installation. If this equipment does cause harmful interference to radio or television reception, which can be determined by turning the equipment off and on, the user is encouraged to try to correct the interference by one or more of the following measures:

- Reorient or relocate the receiving antenna.
- Increase the separation between the equipment and receiver.
- Connect the equipment into an outlet on a circuit different from that to which the receiver is connected.
- Consult the dealer or an experienced radio/TV technician for help.

Caution: Any changes or modifications to this device not explicitly approved by manufacturer could void your authority to operate this equipment.

This device complies with part 15 of the FCC Rules. Operation is subject to the following two conditions: (1) This device may not cause harmful interference, and (2) this device must accept any interference received, including interference that may cause undesired operation.

The device has been evaluated to meet general RF exposure requirement.