

User Manual(Smart Switch)

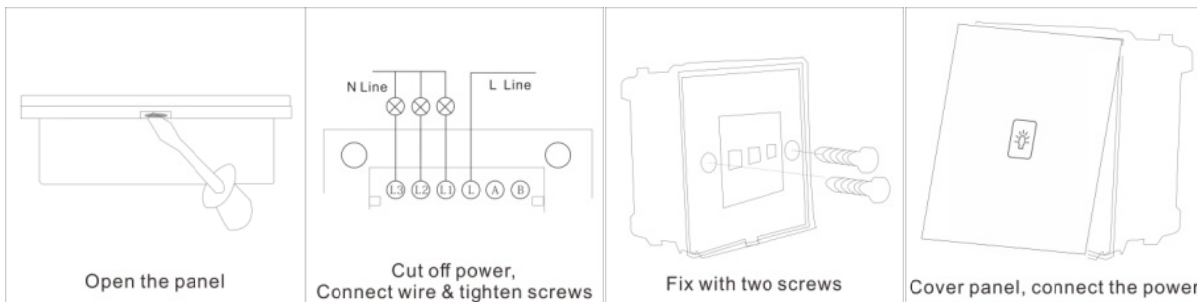


Please read the instructions carefully before installation. The manufacturers will not be responsible for any failure operations not follow the instructions.

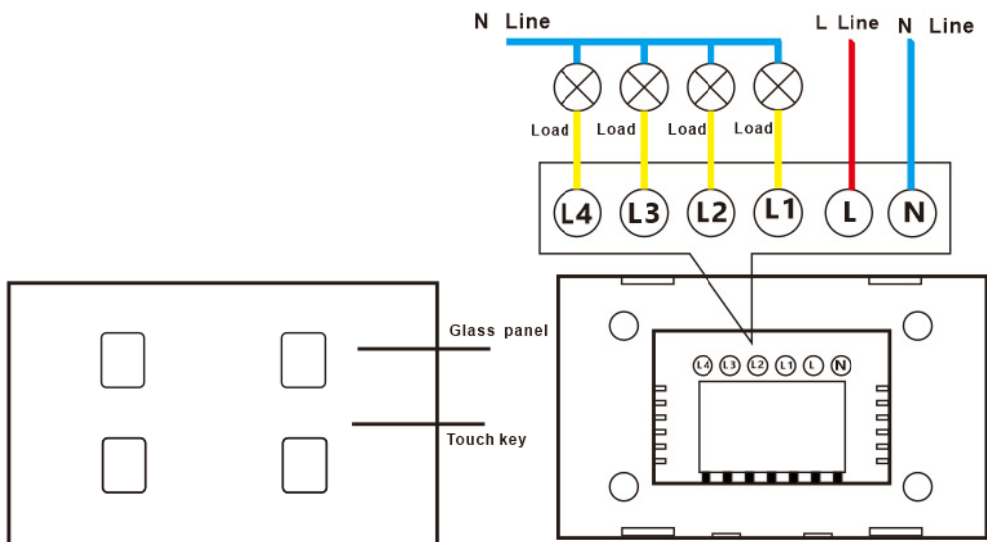
Special attentions:

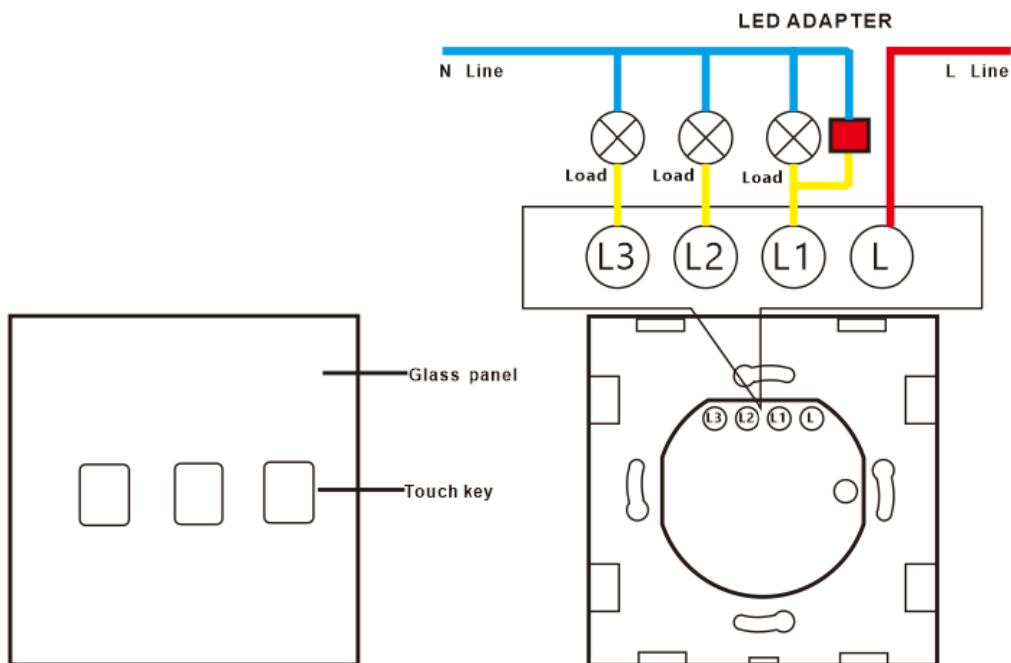
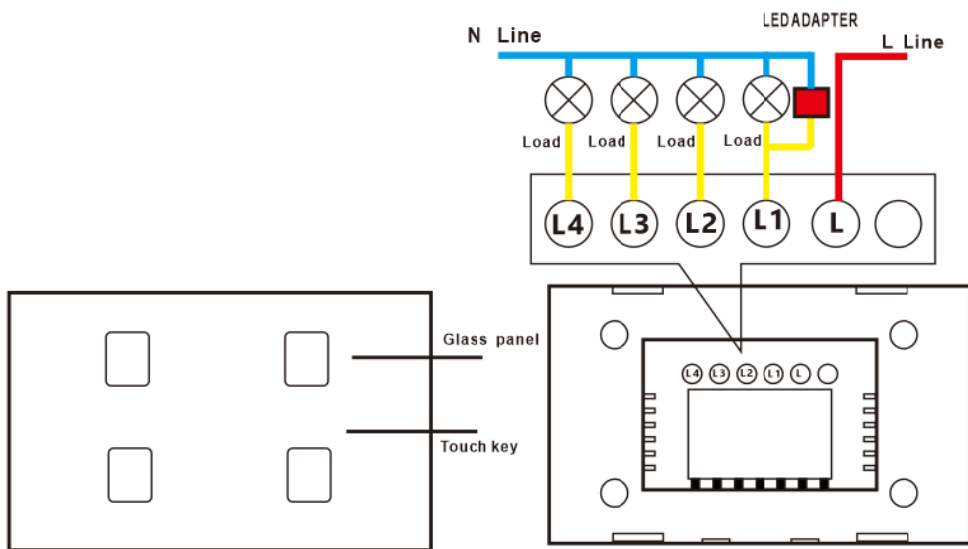
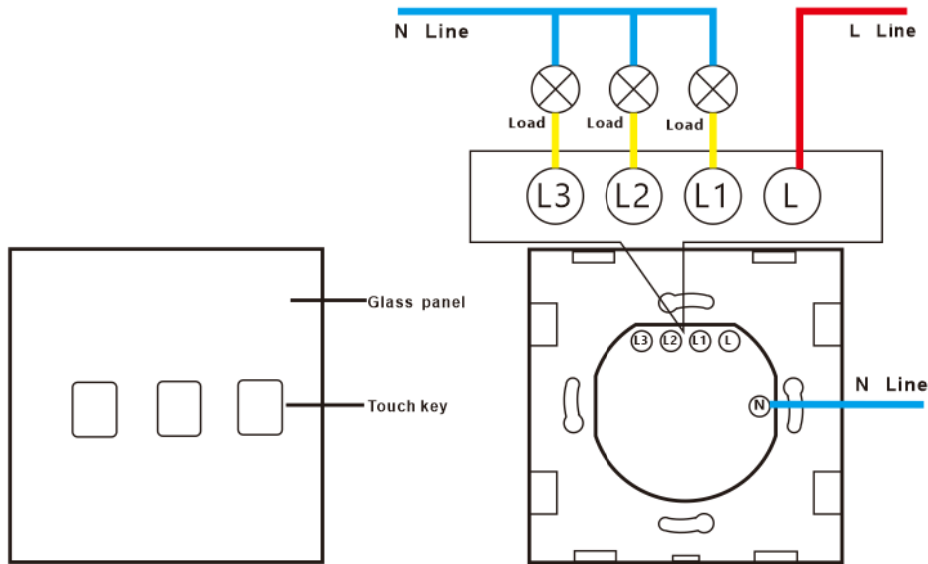
- 1- Don't install with power.
- 2- Strictly in accordance with the product wiring diagram.
- 3- Don't work over load.

1. Installation Steps:



2. Wiring Diagram:





3. Program APP to control

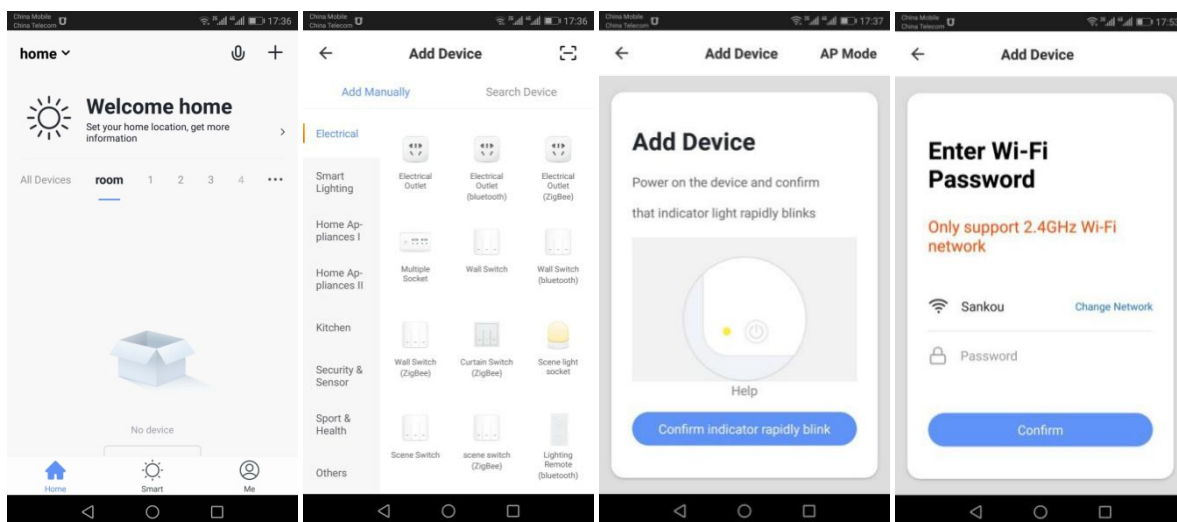
- 1- Scan the QR code, download the APP.



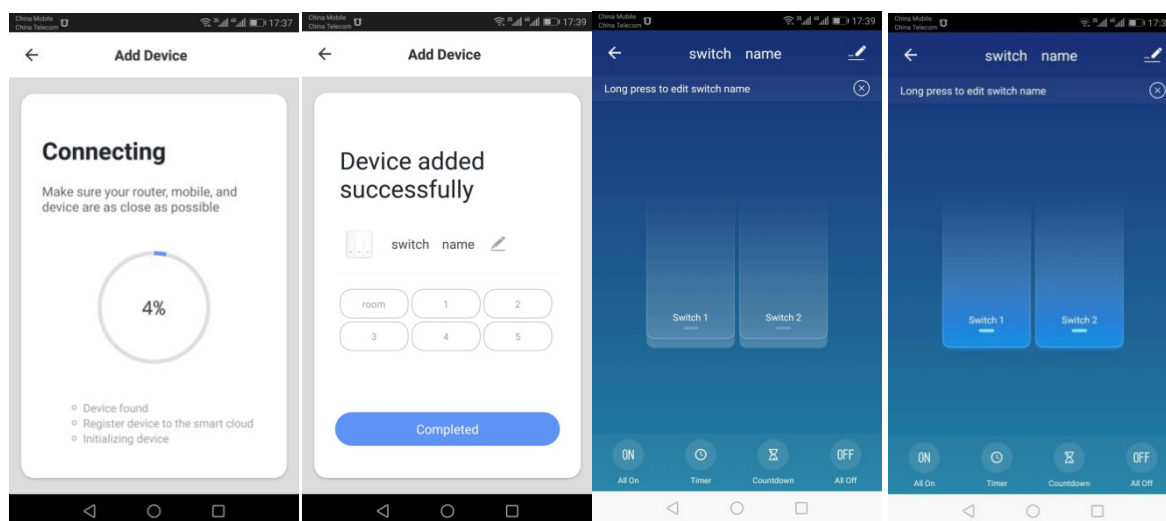
4.Add WiFi Switch On App

- 1- Pairing:

- (1) Press the touch button and hold for about 3 seconds until the WiFi LED blinks fast.
- (2) Click the '+' button on APP. Click next step, then 'Wi-Fi network' then enter the router password;



2- State show and setting scheduled

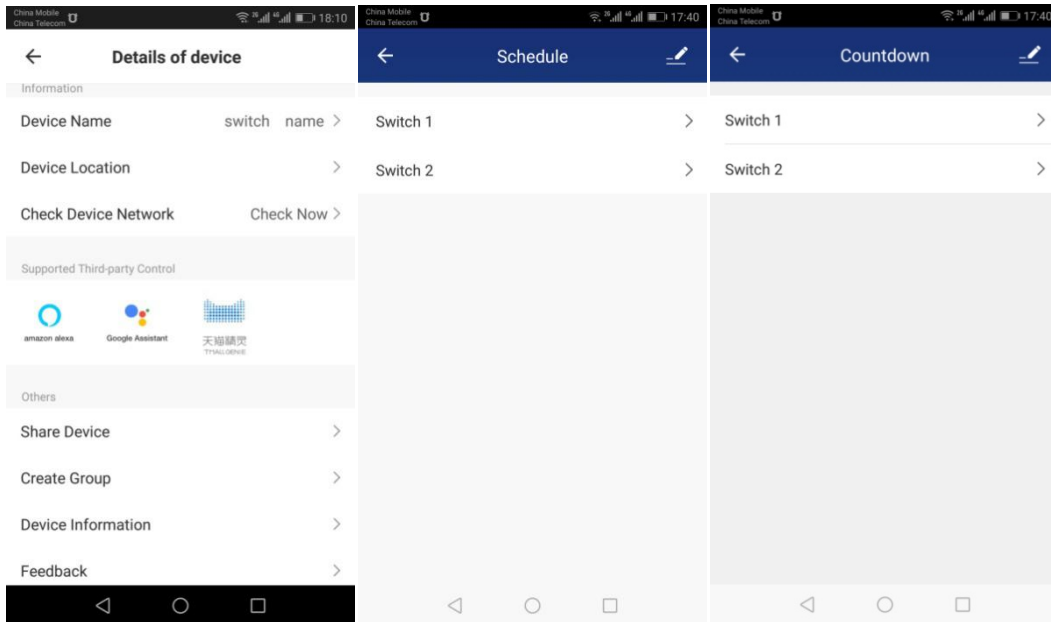


Connect successful

State: show one switch on

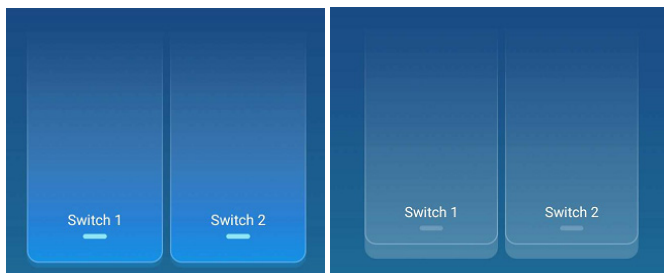
switch settings

- 3- Equipment management: Click the '+' button on APP, equipment delete or setting.



4- APP Display Description:

- (1) Blue back light: The device is ON.
- (2) Gray back light: The device is OFF.



Working state

Off state

5- Questions: My device on the app stays “Off line”?

Answer: The new added device needs 1min to connect to WiFi and the Internet. If it stays off line for a long time, please judge the problem by the WiFi LED status:

WiFi LED quickly blinks one time every second, device failed to connect to your WiFi:

- (1) Maybe you have entered wrong WiFi password.
- (2) Device is too far away from your WiFi. Please take it closer.
- (3) Device can not be added to the 5G-wifi-router, only the 2.4G-wifi is ok.
- (4) Make sure your router is MAC-open.

If still failed, try to open a mobile hot spot and add again.

WiFi LED quickly blinks twice every second: Device has connected to WiFi but failed to connect to server. Please check your network connectivity.

5. How to pair the remote of the on/off only 1way remote switch

- 1- Press the touch button and hold until you hear one ‘Beep’
- 2- Press the remote key that you want to pair and you will hear another ‘beep’
- 3- Press the touch button three times, each time will lead to a ‘Beep’.

Note: For multi gang switches, each button on the switch needs to be paired by repeating the above steps.

6.How to clear the setting.

- 1- Press the touch button and hold, until you hear continuous four ‘Beep’, done!

Note: Please note that for multi gang switches only needs once clearing.

7. Specification:

- 1- Rated Voltage: AC90V-AC260V
- 2- Rated Frequency: 50HZ/60HZ
- 3- Self Power Consuming: $\leq 0.4\text{mA}$
- 4- Rated Power:
 - Neutral & Live Line series: 16A/20A/32A
 - Neutral & Live Line series: 600W/gang, 1000W/gang
 - Single Live Line low power series: 5-600W/gang; 5-1000W/gang;
- 5- UK series Dimension: 86mm*86mm*33mm.
 - US series Dimension: 118mm*72mm*34mm.
 - EU series Dimension: 86mm*86mm*35mm. 80mm*80mm*35mm.

8. FCC Warning Statement

Changes or modifications not expressly approved by the party responsible for compliance could void the user's authority to operate the equipment. This equipment has been tested and found to comply with the limits for a Class B digital device, pursuant to Part 15 of the FCC Rules. These limits are designed to provide reasonable protection against harmful interference in a residential installation. This equipment generates uses and can radiate radio frequency energy and, if not installed and used in accordance with the instructions, may cause harmful interference to radio communications. However, there is no guarantee that interference will not occur in a particular installation. If this equipment does cause harmful interference to radio or television reception, which can be determined by turning the equipment off and on, the user is encouraged to try to correct the interference by one or more of the following measures:

- Reorient or relocate the receiving antenna.
- Increase the separation between the equipment and receiver.
- Connect the equipment into an outlet on a circuit different from that to which the receiver is connected.
- Consult the dealer or an experienced radio/TV technician for help.

This device complies with part 15 of the FCC Rules. Operation is subject to the following two conditions: (1) This device may not cause harmful interference, and

- (2) this device must accept any interference received, including interference that may cause undesired operation.**

RF Exposure Statement

To maintain compliance with FCC's RF Exposure guidelines, This equipment should be installed and operated with minimum distance of 20cm the radiator your body. This device and its antenna(s) must not be co-located or operation in conjunction with any other antenna or transmitter.