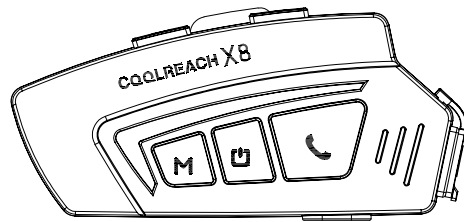
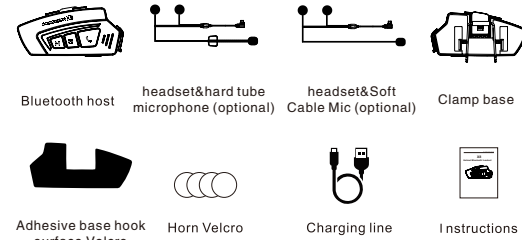


X8

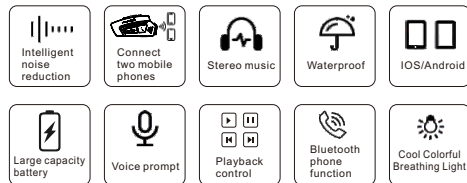
Helmet Bluetooth Headset



1. Packing list



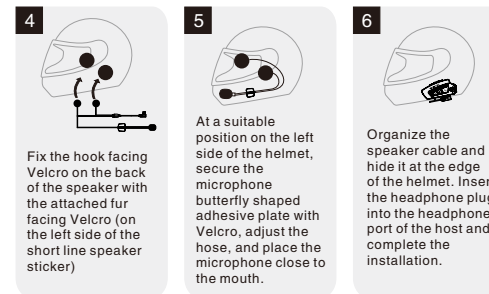
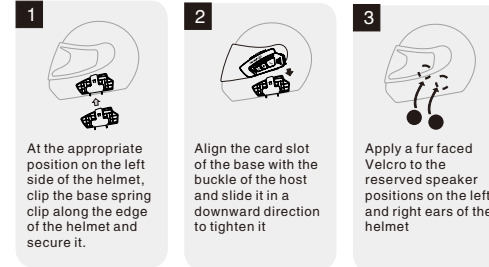
2.Function introduction



1

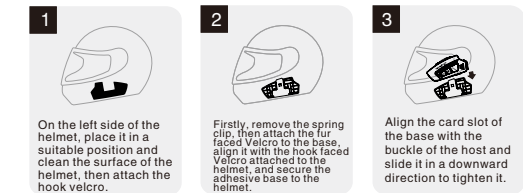
3.Installation steps

3.1 Clamping installation



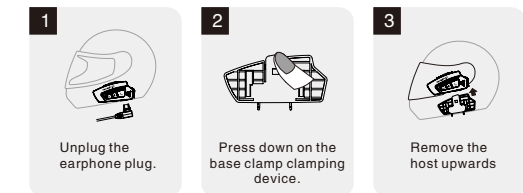
2

3.2 Adhesive installation



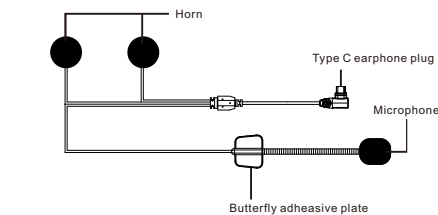
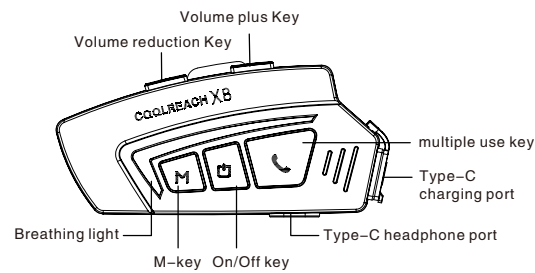
For the installation steps of speakers and microphones, refer to 3.1

4.Disassembly steps ofmain engine



3

5. Product introduction



4

6.Functionoperationdescription

6.1 On/Off key

- Power on: Press and hold for 3 seconds, hear the voice prompt "Power on", and the on/off button will flash alternately with red and blue lights.
- Powe off: Press and hold for 3 seconds, and hear the voice prompt "Turn off". The blue light on the power button will flash twice and turn off
- Pairing: After turning on the power button, the red and blue lights flash alternately. Open the Bluetooth search on the phone, find the name "X8", click on the connection, and hear a voice prompt "Connection successful". The blue light on the power button flashes slowly, and pairing is completed.
- Chinese and English voice switching: Double click and hear a prompt sound before turning on the unpaired phone.

6.2 M key

- Breathing light: Short press the M key to turn on the breathing light, and cycle short press to switch the light effect mode and turn off the breathing light (random color breathing – random jump color change – random color change running horse – random color mixing running horse – turn off the breathing light)
- Voice Assistant: After successful pairing, double–click the M key to wake up the phone's voice assistant

6.3 multiple use key

- Answer a call: When the call is in progress, briefly press once to

5

answer the call. (There is no need to operate buttons in automatic answering mode)

- Terminate call: In call mode, briefly press once to end the call.
- Redial Call: Double click to redial the last call in the successfully connected state.
- Reject call: In the incoming call state, press and hold for 2 seconds to reject the call.
- Music playback: Short press in music mode.
- Music pause: Short press in music mode.

6.4 Volume plus key

- Volume up: In music/call mode, press and hold until you hear the "thump" sound to end the adjustment.
- Previous song: Short press once while playing music
- Automatic/manual answer switching: After successful connection, double–click and hear a "dong" sound to indicate successful switching.

6.5 Volume reduction key

- Volume reduction: In music/call mode, press and hold until no sound is heard, and then adjust.
- Next track: Short press once while playing music

6.6 Charge indicator

- When charging, the multi–functional button lights up in red, and when fully charged, the red light goes out.

6

7. Parameter specification

- Bluetooth version: 5.3
- Bluetooth distance: ≥ 10 meters
- Horn unit: $\Phi 40\text{mm } 32\Omega$
- Working time: 40 hours
- Standby time:300 hours
- Rechargeable battery: 3.7V/800mA lithium battery
- Charging time: 2 hours
- Charging interface: type C
- Charging voltage: USB 5V=1A

8. Matters needing attention

- Do not touch the product with sharp objects to avoid scratching or damage.
- Do not expose the product to open fire to avoid explosion hazard.
- Do not try to disassemble the product to avoid product damage
- If the product is not used for a long time, please store it in a dry place and charge it regularly (once a month) to ensure that the product can work normally

7

FCC Warning:

This equipment has been tested and found to comply with the limits for a Class B digital device, pursuant to part 15 of the FCC Rules. These limits are designed to provide reasonable protection against harmful interference in a residential installation. This equipment generates, uses and can radiate radio frequency energy and, if not installed and used in accordance with the instructions, may cause harmful interference to radio communications. However, there is no guarantee that interference will not occur in a particular installation. If this equipment does cause harmful interference to radio or television reception, which can be determined by turning the equipment off and on, the user is encouraged to try to correct the interference by one or more of the following measures:

- Reorient or relocate the receiving antenna.
- Increase the separation between the equipment and receiver.
- Connect the equipment into an outlet on a circuit different from that to which the receiver is connected.
- Consult the dealer or an experienced radio/TV technician for help.

Caution: Any changes or modifications to this device not explicitly approved by manufacturer could void your authority to operate this equipment.

This device complies with part 15 of the FCC Rules. Operation is subject to the following two conditions:

(1) This device may not cause harmful interference, and (2) this device must accept any interference received, including interference that may cause undesired operation.

This equipment complies with FCC radiation exposure limits set forth for an uncontrolled environment. This equipment should be installed and operated with minimum distance 0cm between the radiator and your body.